



## Under-Counter Beverage Cooler Instruction Manual



Series Model No:

GSP0H-840; GSP1H-840; GSP2H-840; GSP2S-840; GSP3H-840;  
GSP3S-840; GSP0H-865; GSP1H-865; GSP2H-865; GSP2S-865;  
GSP3H-865; GSP3S-865; GSP0H-900; GSP1H-900; GSP2H-900;  
GSP2S-900; GSP3H-900; GSP3S-900;

Please read this booklet carefully and keep it in a safe place for  
your future reference.

Thank you for selecting a Rhino product. This appliance has been designed using the latest techniques and incorporates the best components. We hope that you enjoy its use and benefit from its performance. Please read this manual carefully and keep it in a safe place for future reference

## **IMPORTANT**

In the event of a breakdown, please consult the re-seller from whom you purchased this merchandiser

Always insist upon the use of Rhino genuine parts.

For further information please contact:

## **Rhino Equipment**

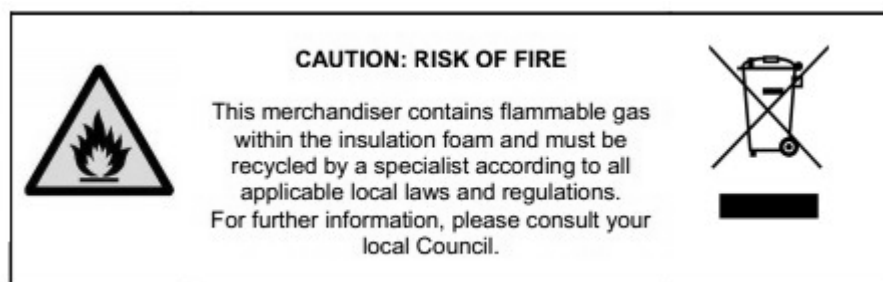
9 Hunters Walk, Canal Street,  
Chester, CH1 4EB, United Kingdom

Telephone: (+44) 01244 321320

Fax: (+44) 01244 322345

Email: [sales@staycold.co.uk](mailto:sales@staycold.co.uk)

[www.rhinoequipment.eu](http://www.rhinoequipment.eu)



## TABLE OF CONTENTS

1. Installation.....	4
2. Product description.....	7
3. Pack contents.....	7
4. Operation.....	8
5. Cleaning, care and maintenance.....	10
6. Troubleshooting.....	11
7. Technical specifications.....	12
8. Wiring diagram.....	16
9. Disposal.....	19
10. Compliance.....	19
11. Spare Parts.....	20

The information within this booklet was correct at the time of printing.

Specifications and information may alter without notice

## 1. INSTALLATION

### 1.1 Safety information

All electrical work must be carried out by suitably qualified persons

When using any electrical appliance, safety precautions should always be observed.

- Do NOT use this appliance for other than its intended use. This product is intended for use as a beverage cooler. It is not suitable for the storage of foodstuffs.
- When used by, or near, young children or infirm persons, close supervision is necessary. Young children should be supervised at all times to ensure that they do not play with this appliance.
- Do NOT cover the front grille or block the rear air entry by placing object up against the cabinet.
- Ensure adequate ventilation.
- Do NOT probe any openings.
- Be careful not to touch any moving parts or hot surfaces.
- Regulations require that all electrical work be carried out by authorized persons. For your own safety and that of others please ensure this is done.
- Do NOT overload the power supply. Always ensure that the power supply is adequate for the electrical requirements specified on the rating label. The rating label is located inside the merchandiser on the right hand side wall. If in doubt, please consult a qualified electrician. Caution: Never use extension leads or multiple adaptors.
- If the mains supply cord is damaged, it must be replaced by the manufacturer, its service agent or similarly qualified and skilled persons in order to avoid hazard. A skilled person is a person having the appropriate technical training and experience necessary to be aware of hazards to which he or she is exposed in performing a task and of measures necessary to minimize the danger to his or herself or other persons.
- Disconnect the mains power supply before attempting any cleaning, removal of any covers, or maintenance work.
- Do NOT store explosive substances, such as aerosol cans with flammable propellant, in this merchandiser.
- **WARNING:** Do not use mechanical devices or other means to accelerate the defrosting process. Defrosting is performed automatically.



- **WARNING:** Do not damage the refrigeration circuit.
- **WARNING:** Do not use electrical appliances inside the storage compartment of this appliance.


## 1.2 Assembly

- Remove the appliance from the packaging and peel off any protective film from all surfaces.
- Fit the shelf support clips onto the shelf support strips, making sure that the clips for each shelf are of the same height and that they are securely engaged on the support strip.
- Unwrap each shelf carefully, to prevent damaging their protective coating or surface finish.
- Position the shelves onto the clips.
- Please note the following maximum shelf loading weights: 20Kg.



**Please dispose of all waste packaging appropriately and in accordance with all local recycling laws.**

## 1.3 Positioning the chiller


	<p><b>WARNING</b> Do <b>NOT</b> overload the power supply. Always ensure that the power supply is adequate for the electrical requirements specified on the rating label and never use extension leads or multiple adaptors.</p>
---	--


- Please position the cabinet carefully being careful not to bump it.
- The power supply flex exits the chiller at the bottom right hand side (as viewed from the front). For ease of access, the flex should be retrieved prior to positioning the chiller in its final location.
- The maximum recommended ambient temperature for this chiller is 42°C.
- Avoid positioning the appliance in direct sunlight or damp areas.
- Allow adequate space for the door(s) to fully open.
- Ensure that this chiller is positioned on a level surface, so as to allow the door(s) to shut and seal correctly, as well as to allow proper drainage from the evaporator tray, to prevent any overflow. If necessary, adjust the screw feet of the appliance to make it level.
- Do **NOT** overload the power supply. Always ensure that the power supply is adequate for the electrical requirements specified on the rating label. The rating label is located inside the chiller, on the right hand side wall. If in doubt, please consult a qualified electrician. Caution: Never use extension leads or multiple adaptors.

Note: If the unit has not been stored or moved in an upright position, let it stand upright for approximately 12 hours before operation. If in doubt allow to stand.

### Ventilation

- All models: All models must have clear and unobstructed ventilation from the entire surface area of the front grille.
- The 2 and 3 door models may be built into an enclosure without the need for ventilation other than at the front.
- The single door coolers **MUST** have a minimum ventilation space of 20mm at sides and rear.

• **WARNING:**  Failure to provide the minimum ventilation space will harm the performance of your chiller, could cause fire and will invalidate the warranty.

• **WARNING:**  Keep clear of obstruction all ventilation openings in the appliance enclosure or in the structure for building in.

## 2. Product description

Series Model No	Door's quality	Door's type	Lighting
GSP0H-840	Single door	Hinged door	1x2Watt(Max.) LED light
GSP1H-840	Single door	Hinged door	1x2Watt(Max.) LED light
GSP2H-840	Double door	Hinged door	2x2Watt(Max.) LED light
GSP2S-840	Double door	Sliding door	2x2Watt(Max.) LED light
GSP3H-840	Triple door	Hinged door	3x2Watt(Max.) LED light
GSP3S-840	Triple door	Sliding door	3x2Watt(Max.) LED light
GSP0H-865	Single door	Hinged door	1x2Watt(Max.) LED light
GSP1H-865	Single door	Hinged door	1x2Watt(Max.) LED light
GSP2H-865	Double door	Hinged door	2x2Watt(Max.) LED light
GSP2S-865	Double door	Sliding door	2x2Watt(Max.) LED light
GSP3H-865	Triple door	Hinged door	3x2Watt(Max.) LED light
GSP3S-865	Triple door	Sliding door	3x2Watt(Max.) LED light
GSP0H-900	Single door	Hinged door	1x2Watt(Max.) LED light
GSP1H-900	Single door	Hinged door	1x2Watt(Max.) LED light
GSP2H-900	Double door	Hinged door	2x2Watt(Max.) LED light
GSP2S-900	Double door	Sliding door	2x2Watt(Max.) LED light
GSP3H-900	Triple door	Hinged door	3x2Watt(Max.) LED light
GSP3S-900	Triple door	Sliding door	3x2Watt(Max.) LED light

## 3. Pack contents

The following is included:

All models

- RHINO Back Bar Chiller
- Instruction manual
- 2 keys for glass door

Plus...

Single Door model

- 2 adjustable shelves
- 8 shelf support clips

Double Door model

- 4 adjustable shelves
- 16 shelf support clips

Triple Door model

- 6 adjustable shelves
- 24 shelf support clips

RHINO prides itself on quality and service, ensuring that at the time of packaging the contents are supplied fully functional and free of damage.

Should you find any damage as a result of transit, please contact your RHINO dealer immediately.

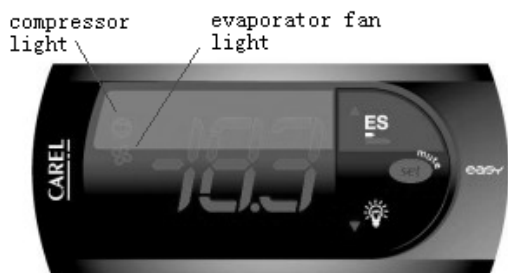
## 4. Operation

This chiller is designed to operate at a recommended ambient temperature of 42 °C and as such, is categorized as a Climate Class 5 product. This information is recorded on the rating label, which can be found on the inside right hand wall of the cabinet.

Climate class	Temperature(°C)	Humidity(%RH)
5	40	40

### Control Panel

The control panel is located below the door(s) on the front of the appliance.



### Switching on

- Close the door of the appliance.
- Connect the appliance to an appropriate mains power supply.

### Working mode

There are two different modes for the electronic thermostat, which are referred to as Standard Mode and Saving Mode.

- Standard Mode: the chiller is optimised for maximum performance and will maintain 0-4C.
- Saving Mode: the chiller is optimised for energy saving. In Saving Mode the interior temperature is allowed to rise to as high as 10C, the air circulating fans are managed for energy saving and the interior lights are switched off.

### Switching Between Modes

When the appliance is powered up for the first time, the default mode is Standard Mode. To enter Saving Mode, simply press and hold the UP/ES keypad button for at least 3 seconds. The mode which is about to be entered is displayed as a preview. EnS is displayed for Saving Mode and NOR is displayed for Standard Mode. Upon disconnection and subsequent re-connection to the mains power, the previously selected mode will be remembered and restored.

### Switching the Interior Lights ON and OFF

As mentioned above, the lights are automatically turned off in "Saving Mode". To switch the interior lights on or off at any time in either Mode, simply press



and hold the DOWN / LIGHT keypad button for at least 0.5 seconds. The light will be either powered on or off accordingly.

### If the compressor light is flashing on the electronic display

The compressor is designed to have a minimum resting period of 6 minutes. If the electronics command the compressor to start, but it is in resting mode, then the compressor light will flash. This is normal and nothing to be concerned about.

### Adjusting the temperature of Standard Mode

The appliance is set up to run without interference from the user. It is not recommended for the user to interfere with the complex electronic set up. However if the user wishes to change the temperature of the Standard Mode then it can be done by altering the ST parameter. ST is the lowest temperature that the user wishes the appliance to run at. The appliance will run at ST plus 2 degrees. For example if you wish to have an average temperature of 6 degrees inside the cabinet then you would select ST at a value of 4:

1. Press the SET keypad button for at least 3 seconds until “ 0 “ is displayed.
2. Press the UP / ES keypad button 22 times until “ 22 “ is displayed .
3. Press the SET keypad button and the display will change to “PS”
4. Press the UP / ES keypad button 7 times until “ ST “ is displayed.
5. “ 0 “ will appear on the display
6. Using the “Down/Light” or “Up / ES” button, select the ST minimum temperature value you prefer.
7. Press the “SET” keypad button once again will lock in the parameter change.

## 5. Cleaning, care and maintenance

- Switch off and disconnect from the power supply before cleaning
- Clean the interior of the appliance using an appropriate sanitising solution in accordance with local hygiene laws and regulations.
- Do not use abrasive cleaning agents which may scratch and harm the delicate interior finishes of your appliance.
- Always wipe dry after cleaning.
- A RHINO agent or qualified technician must carry out repairs if required.

### Clean the filter of single door back bar chiller

- The filter must be kept clean and free of dust at all times. It is recommended that the cleaning routine be conducted at intervals appropriate to the speed of accretion of dust on the filter and in any event at least every month. Failure to keep the filter clean will damage the refrigeration system and invalidate the warranty.
- Pull the filter upwards to remove it from its locating place under the glass door.
- Use a vacuum cleaner, preferably with a brush attachment, to remove built up dust.
- Refit the filter to its original location to ensure continual efficient operation is maintained.

### Clean the condenser

The condenser must be kept clean and free of dust at all times. It is recommended that the cleaning routine be conducted at intervals appropriate to the speed of accretion of dust on the condenser. Failure to keep the condenser clean will damage the refrigeration system and invalidate the warranty.

**Warning:** The condenser is a delicate component and is easily damaged. Never use a stiff brush or sharp objects to clean it. Never use water.

**For full visual details on how to clean your filter and condenser, please visit : [www.cleanme.eu](http://www.cleanme.eu)**

## 6. Troubleshooting

If your appliance develops a fault, please check the following table before making a call to the Helpline.

<b>Fault</b>	<b>Probable Cause</b>	<b>Action</b>
The appliance is not working	The unit is not plugged in correctly	Check the unit is plugged in correctly
	Plug or lead is damaged	Call RHINO agent or qualified technician
	Power supply	Check power supply
	Internal wiring fault	Call RHINO agent or qualified technician
The appliance turns on, but the temperature is too high/low	Filter or condenser blocked with dust	Clean filter or condenser
	Doors are not shut properly	Check doors are shut and seals are not damaged
	Appliance is located near a heat source or air flow to the condenser is being interrupted	Move the appliance to a more suitable location
	Ambient temperature is too high	Increase ventilation or move appliance to a cooler position
	Insufficient airflow to the fans	Remove any blockages to the fans
	Appliance is overloaded	Reduce the amount stored in the appliance
	Factory default parameters adjusted	Call RHINO agent or qualified technician
The appliance is unusually loud	The appliance is touching a neighbouring object	Check installation position and change if necessary
	The appliance has not been installed in a level or stable position	Check installation position and change if necessary

## 7. Technical specifications

<b>Body Construction</b>	
Exterior	Stainless steel / Colour coated galvanized steel
Interior	Stainless steel / Aluminium
Insulation	40mm thick, injected, polyurethane foam
Foaming agent	Cyclopentane

<b>Refrigeration System</b>	
Type	Integral split system
Airflow	Induced airflow condenser and evaporator coils
Refrigerant	R600a

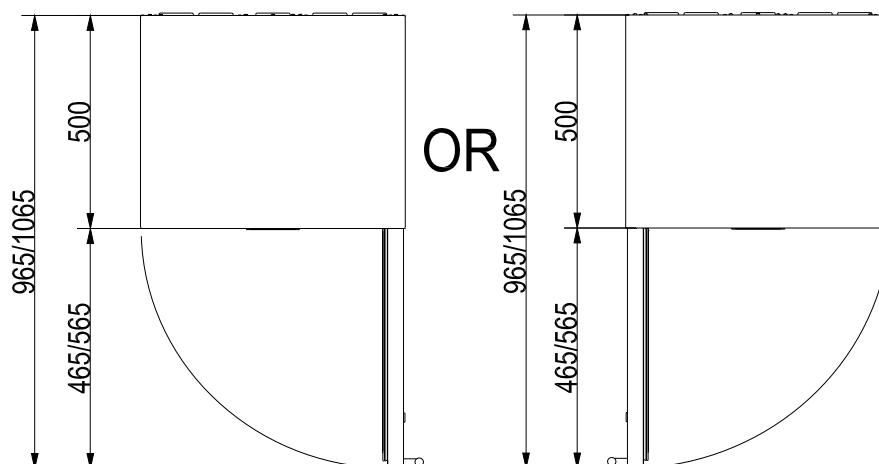
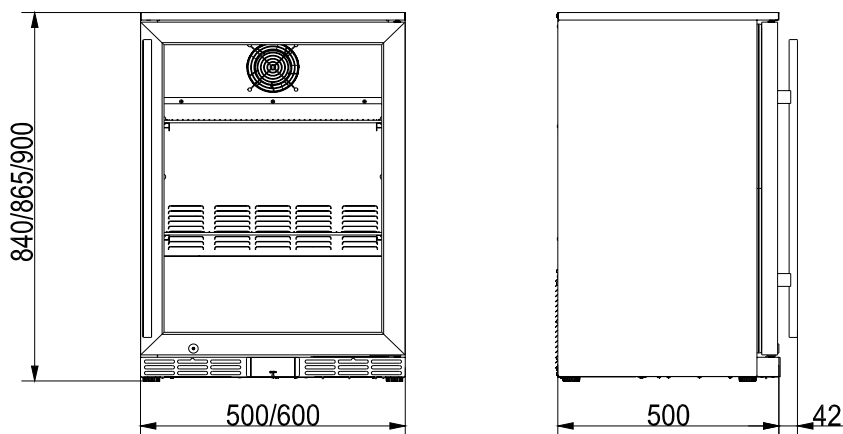
<b>Electrical</b>	
Supply	220~240 Volt a.c.(50Hz.) Single phase

Series Model No	Power	Current	Temperature range of standard mode	Temperature range of Saving mode	Refrigerant
GSP0H-840 GSP1H-840 GSP0H-865 GSP1H-865 GSP0H-900 GSP1H-900	135W	0.60A	0~4°C	4~10°C	R600a 60g
GSP2H-840 GSP2S-840 GSP2H-865 GSP2S-865 GSP2H-900 GSP2S-900	140W	0.65A	0~4°C	4~10°C	R600a 48g
GSP3H-840 GSP3S-840 GSP3H-865 GSP3S-865 GSP3H-900 GSP3S-900	220W	1.2A	0~4°C	4~10°C	R600a 85g

**7.1. GSP0H-840/GSP1H-840/GSP0H-865/GSP1H-865/**

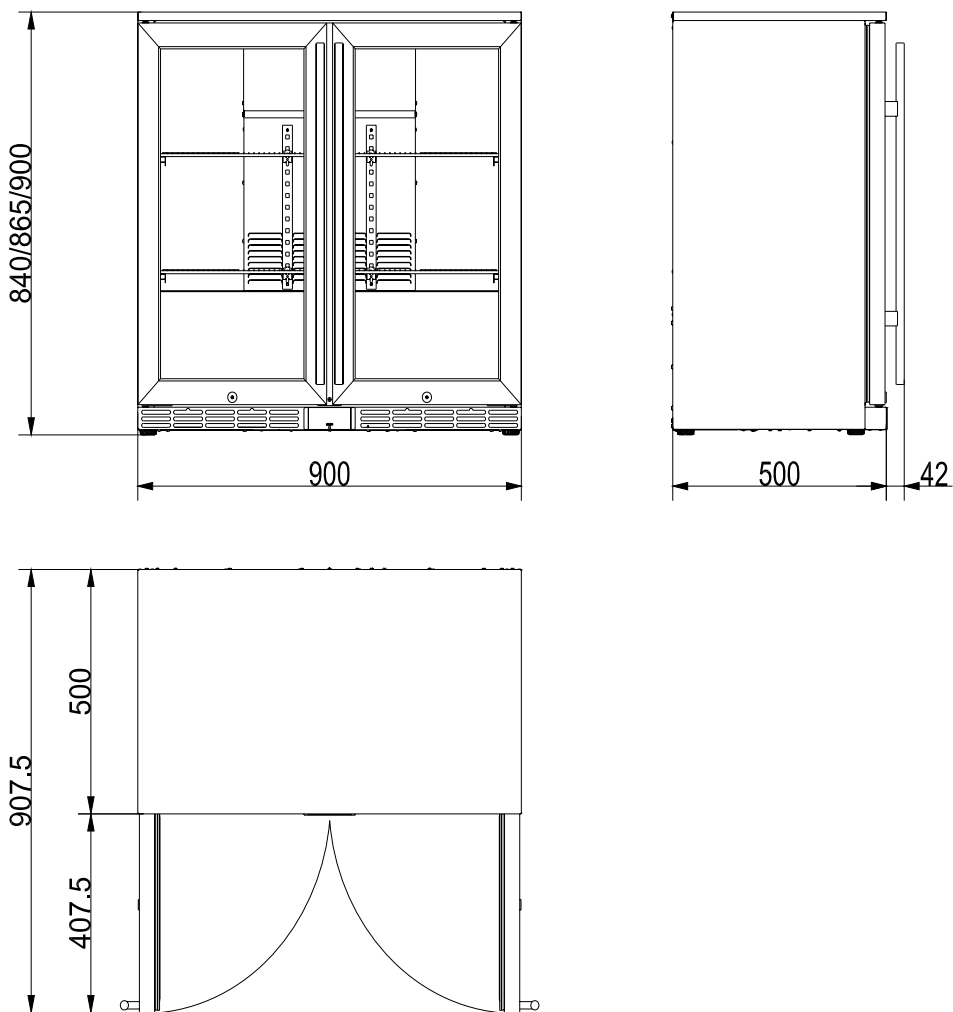
**GSP0H-900/GSP1H-900**

Series Model No	Width	Height	Depth	Gross Weight	Net Weight	Gross Volume	Net Volume
GSP0H-840	500mm	840mm	542mm	64Kg	43Kg	104L	93L
GSP1H-840	600mm	840mm	542mm	71Kg	48Kg	129L	115L
GSP0H-865	500mm	865mm	542mm	67Kg	46Kg	109L	96L
GSP1H-865	600mm	865mm	542mm	74Kg	51Kg	135L	120L
GSP0H-900	500mm	900mm	542mm	70Kg	49Kg	113L	100L
GSP1H-900	600mm	900mm	542mm	77Kg	54Kg	140L	124L



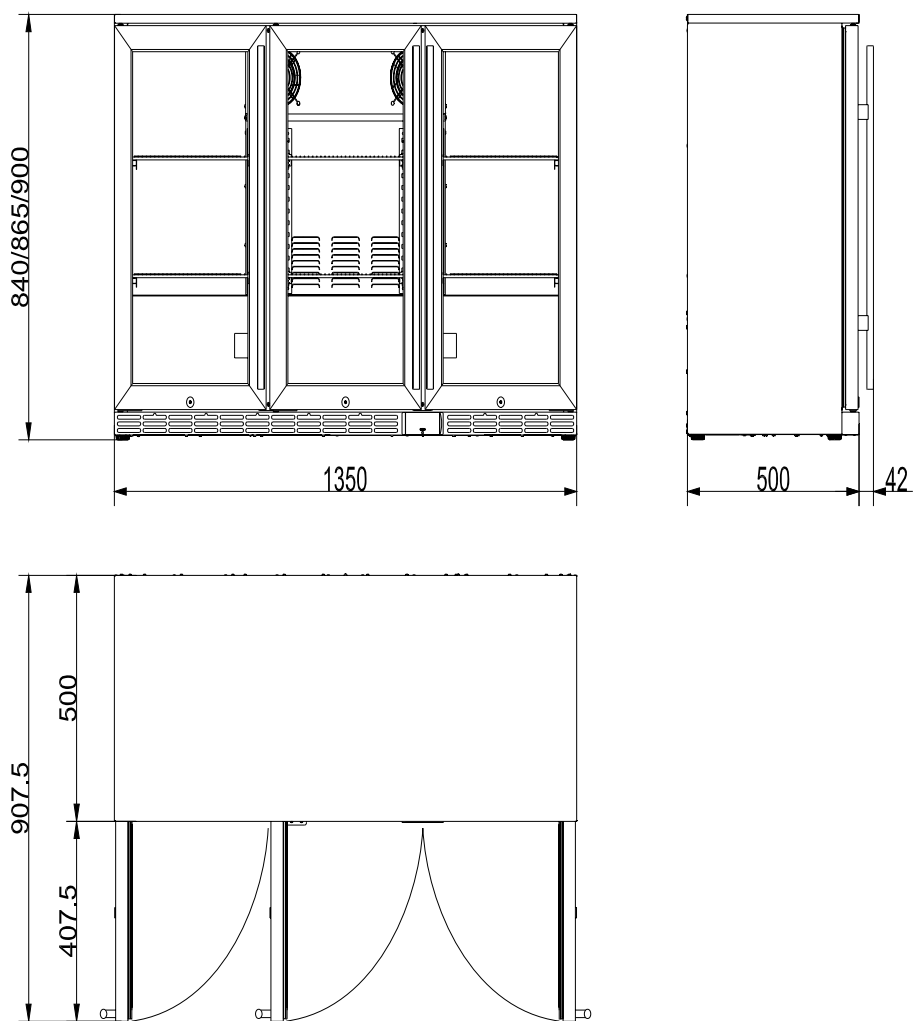
## 7.2. GSP2H-840 /GSP2H-865/GSP2H-900

Series Model No	Width	Height	Depth	Gross Weight	Net Weight	Gross Volume	Net Volume
GSP2H-840	900mm	840mm	542mm	94Kg	65Kg	201L	192L
GSP2H-865	900mm	865mm	542mm	98Kg	69Kg	210L	200L
GSP2H-900	900mm	900mm	542mm	102Kg	73Kg	218L	207L



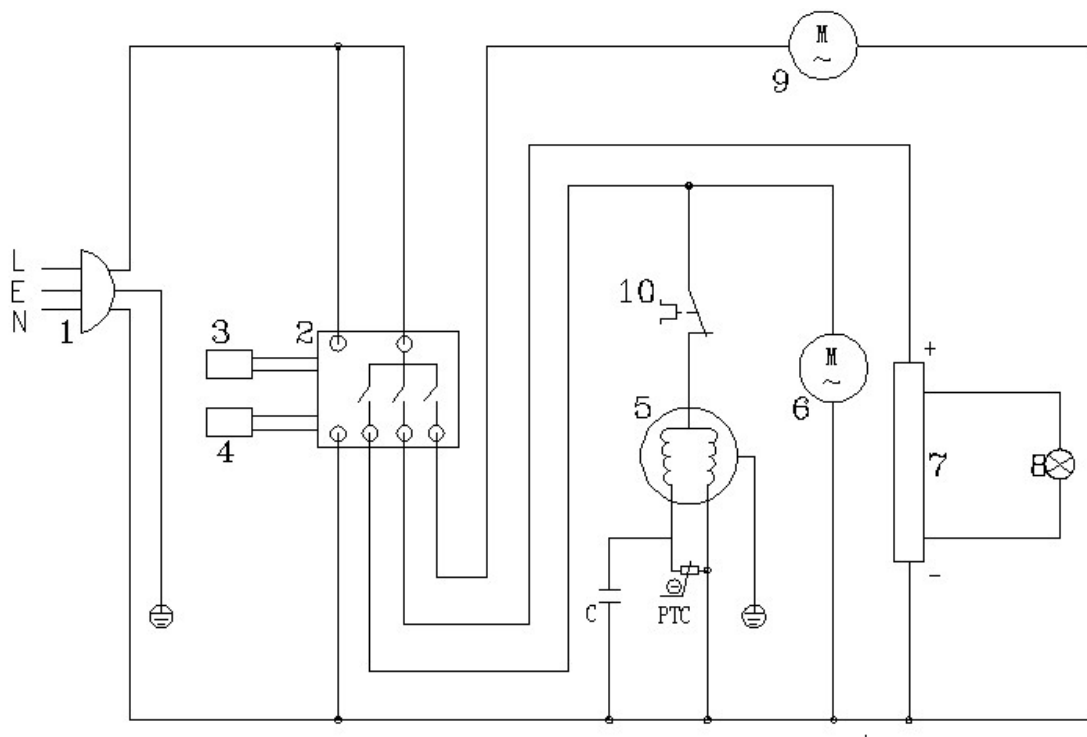
### 7.3. GSP3H-840 /GSP3H-865/GSP3H-900

Series Model No	Width	Height	Depth	Gross Weight	Net Weight	Gross Volume	Net Volume
GSP3H-840	1350mm	840mm	542mm	125Kg	90Kg	312L	304L
GSP3H-865	1350mm	865mm	542mm	130Kg	95Kg	325L	310L
GSP3H-900	1350mm	900mm	542mm	135Kg	100Kg	338L	316L



### 8. Wiring diagram

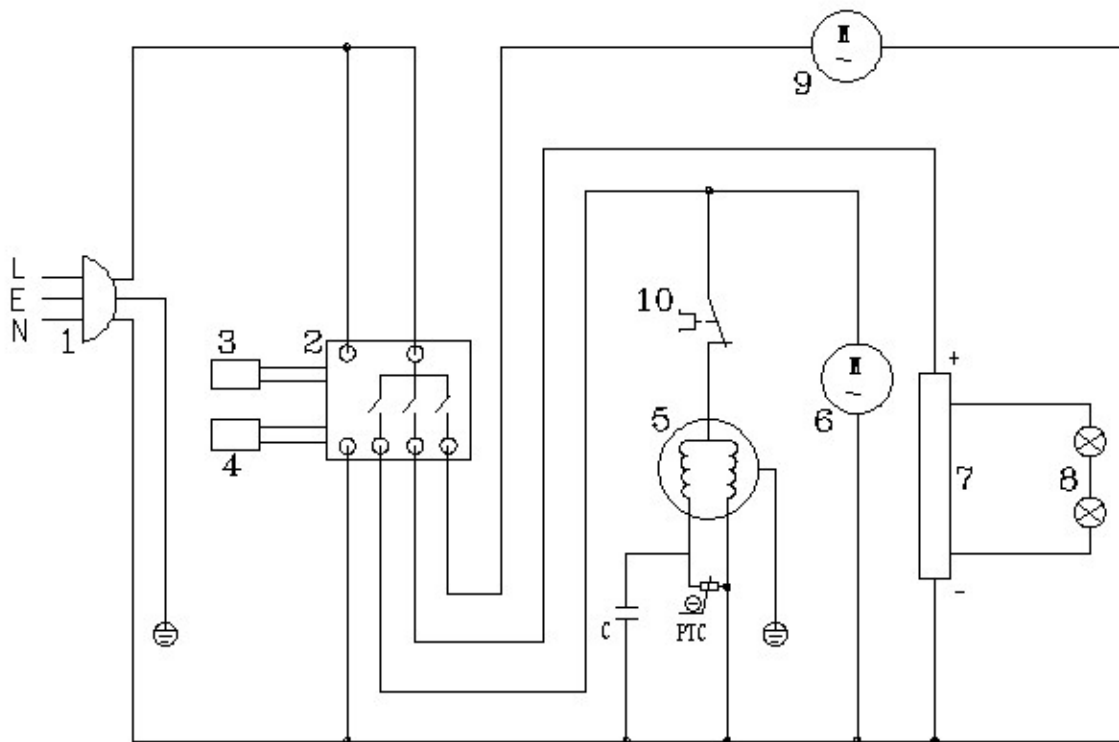
**.GSP0H-840/GSP1H-840/GSP0H-865/GSP1H-865/  
GSP0H-900/GSP1H-900**



- |                        |                          |
|------------------------|--------------------------|
| 1. Power Plug          | 2. Electronic Thermostat |
| 3. Sensor              | 4. Sensor                |
| 5. Compressor          | 6. Condenser Fan         |
| 7. Switch Power Supply | 8. LED light             |
| 9. Evaporator Fan      | 10. Motor Protector      |

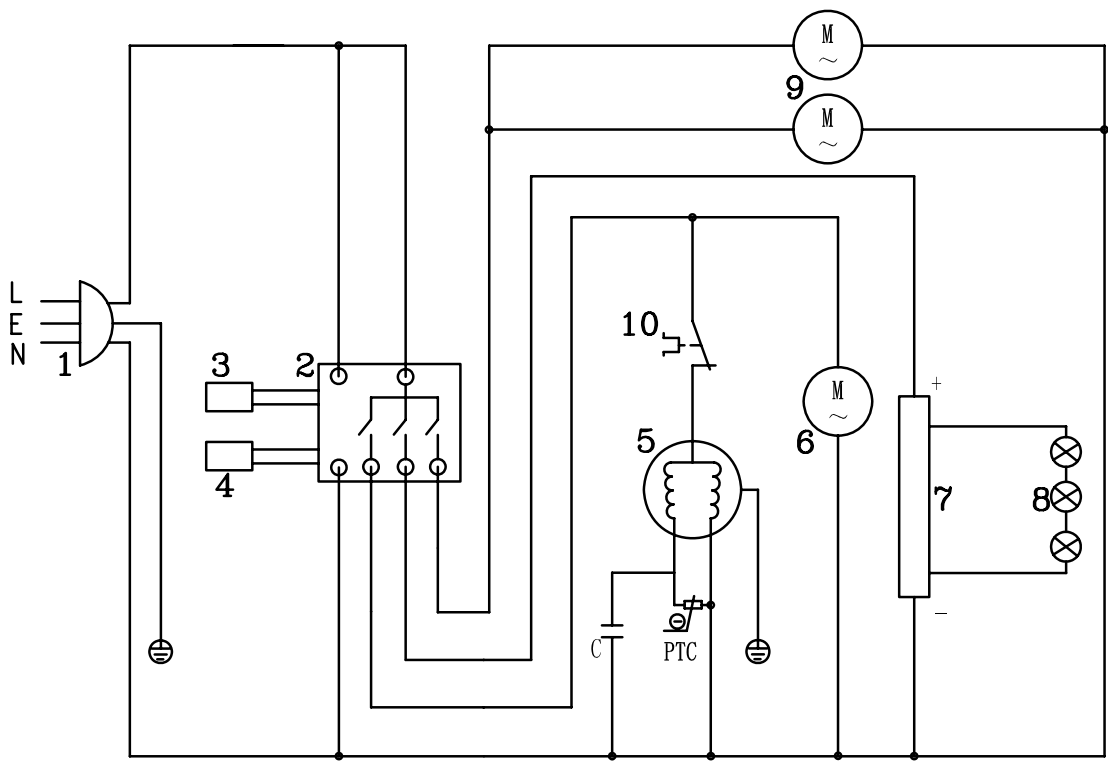


**.GSP2H-840 /GSP2H-865/GSP2H-900 /GSP2S-840/  
GSP2S-865/GSP2S-900**



- |                        |                          |
|------------------------|--------------------------|
| 1. Power Plug          | 2. Electronic Thermostat |
| 3. Sensor              | 4. Sensor                |
| 5. Compressor          | 6. Condenser Fan         |
| 7. Switch Power Supply | 8. LED light             |
| 9. Evaporator Fan      | 10. Motor Protector      |

**.GSP3H-840 /GSP3H-865/GSP3H-900/ GSP3S-840/  
GSP3S-865/GSP3S-900**



- |                        |                          |
|------------------------|--------------------------|
| 1. Power Plug          | 2. Electronic Thermostat |
| 3. Sensor              | 4. Sensor                |
| 5. Compressor          | 6. Condenser Fan         |
| 7. Switch Power Supply | 8. LED light             |
| 9. Evaporator Fan      | 10. Motor Protector      |

## 9. Disposal

This appliance contains flammable and explosive gas within its sealed system and its insulation foam. This product must **ONLY** be disposed of and recycled by a professional waste handling organisation that is qualified and registered to recycle refrigeration appliances.

If in any doubt, please consult your Local Authority, contact Rhino or contact the reseller from whom you purchased the appliance.



## 10. Compliance

RHINO components have undergone strict product testing in order to comply with regulatory standards and specifications set by international, independent, and federal authorities.

RHINO products have been approved to carry the following symbol:



This appliance contains a flammable refrigerant gas called R600a. Please ensure that the refrigeration engineer is qualified in the safe handling of flammable refrigerants.

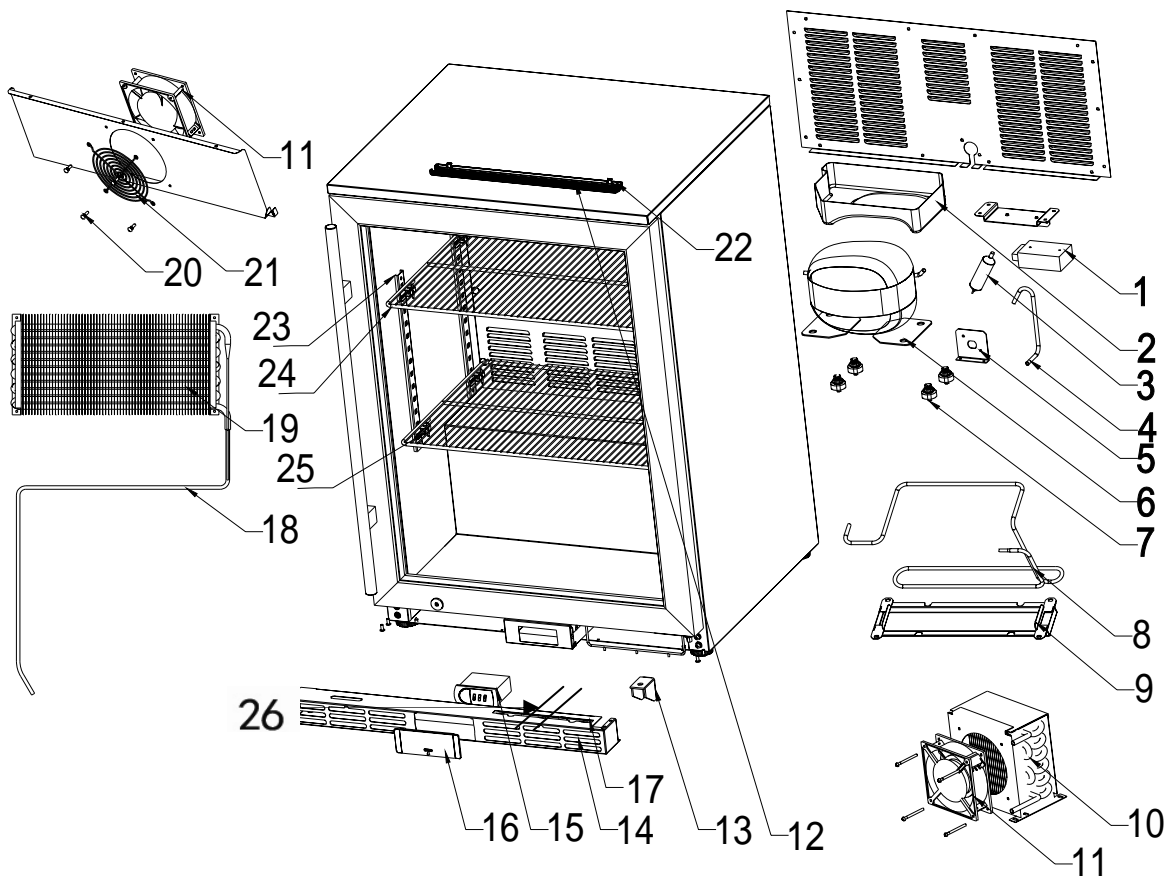
R600a gas is a very efficient refrigerant that is zero ODP (Ozone Depleting) and has negligible GWP (Global Warming Potential).



**All rights reserved. No part of these instructions may be produced or transmitted in any form or by any means, electronic, mechanical, photocopying, recording or otherwise, without the prior written permission of RHINO. Every effort is made to ensure all details are correct at the time of going to press, however, RHINO reserve the right to change specifications without notice.**

## 11. Spare Parts

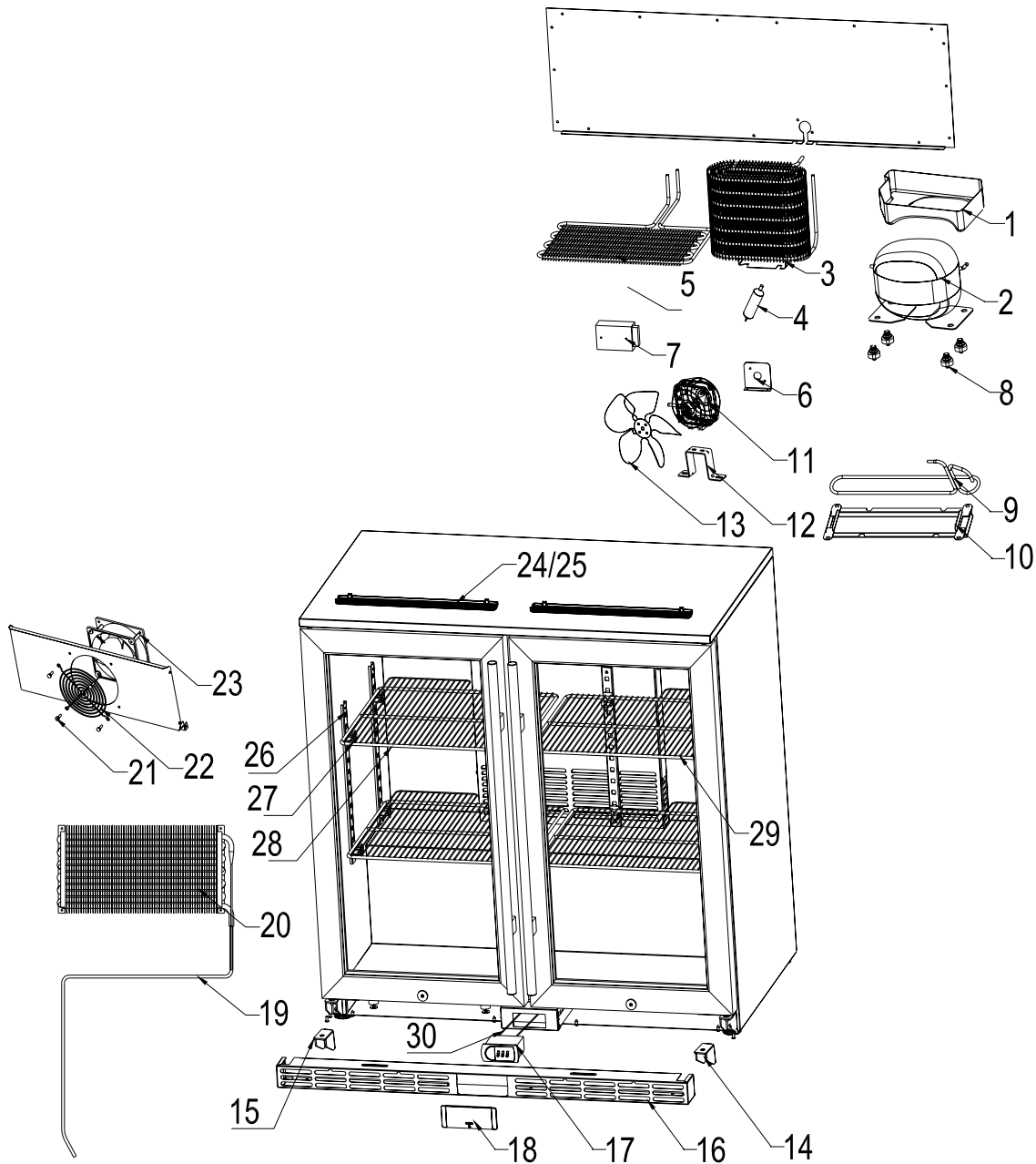
### 11.1. GSP0H-840/GSP1H-840/GSP0H-865/GSP1H-865/ GSP0H-900/GSP1H-900 Cabinet Assembly



## 11.1. GSP0H-840/GSP1H-840/GSP0H-865/GSP1H-865/ GSP0H-900/GSP1H-900 Cabinet Assembly

Item	Part Number	Description
1	E00002800	24V switch power
2	P000036B0	plastic drain tray
3	R00001400	drier
4	R31900400	drier tube
5	M31404000	main lead support
6	R00004700	compressor
7	R00004800	compressor accessory
8	R31900300	exhaust tube
9	M31900800	stainless steel drain tray
10	R31900100	condenser
11	E00008600	EC axial fan
12	P41000400	plastic LED lamp cover
13	M31402800	bottom hinge support
14	M31901900	kick panel
15	E00009000	electronic ECO controller
16	P31402100	plastic controller cover
17	M31902300	filter
18	R31900200	suction assembly
19	R31400100	evaporator
20	P000037B0	nylon rivet
21	M000020S0	evaporator fan cover
22	E31000600	LED light
23	M31403400	shelf support
24	M31403500	shelf clip
25	M31902400	shelf
26	E00008900	sensor

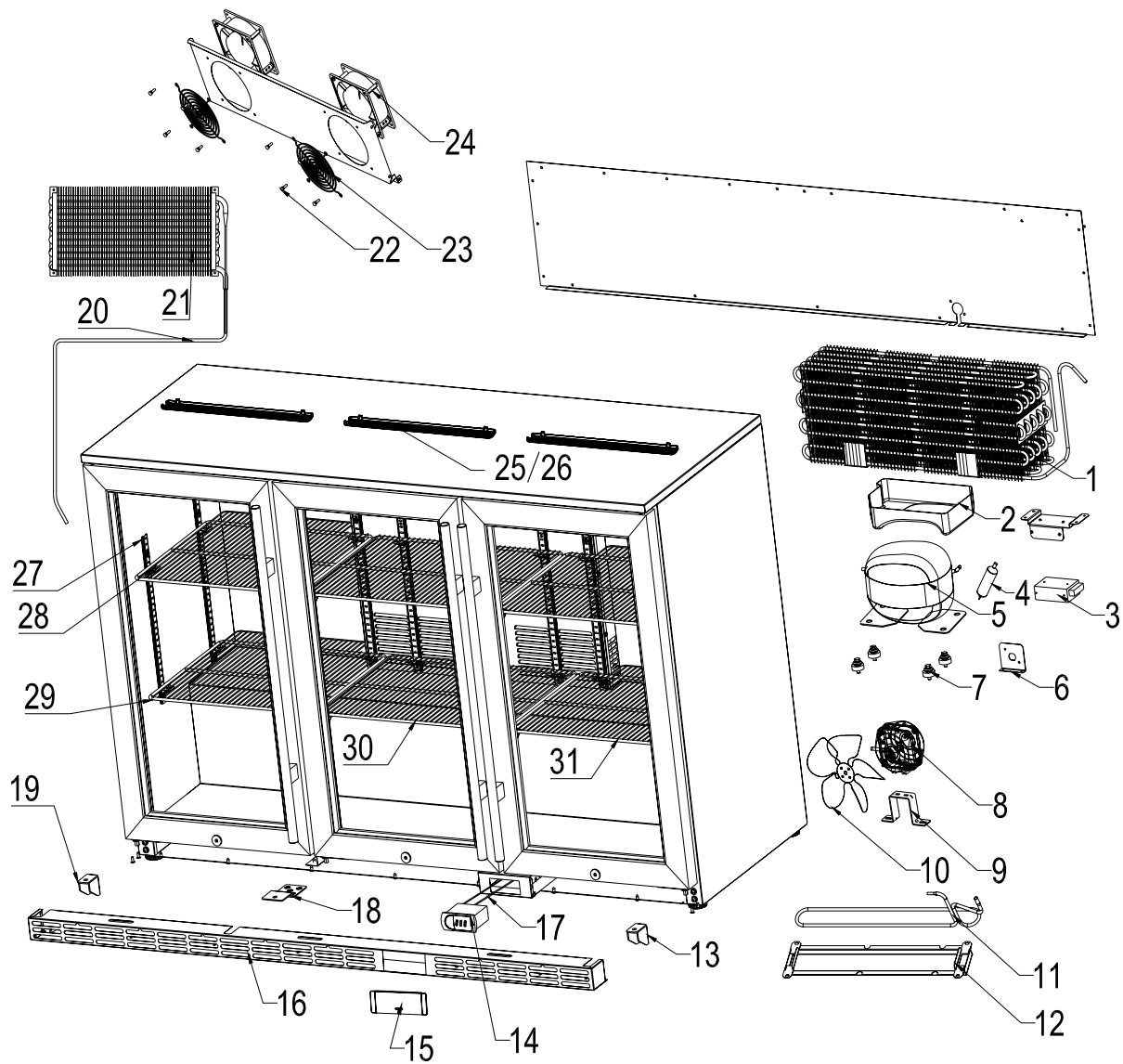
### 11.2. GSP2H-840/GSP2S-840/GSP2H-865/GSP2S-865/ GSP2H-900/GSP2S-900 Cabinet Assembly



## 11.2. GSP2H-840/GSP2S-840/GSP2H-865/GSP2S-865/ GSP2H-900/GSP2S-900 Cabinet Assembly

Item	Part Number	Description
1	P000036B0	plastic drain tray
2	R00004700	compressor
3	R31400400	condenser
4	R00001400	drier
5	M31400300	bottom condenser
6	M31404000	main lead support
7	E00002800	24V switch power
8	R00004800	compressor accessory
9	R31400500	exhaust tube
10	M31403900	stainless steel drain tray
11	E00009200	EBM IQ motor
12	M40102000	motor bracket
13	M00002400	200mm28°fan blade
14	M3140280R	right bottom hinge support
15	M3140280L	left bottom hinge support
16	M31402500	kick panel
17	E00009000	electronic ECO controller
18	P31402100	plastic controller cover
19	R31400200	suction assembly
20	R31400100	evaporator
21	P000037B0	nylon rivet
22	M000020S0	evaporator fan cover
23	E00008600	EC axial fan
24	E31000600	LED light
25	P41000400	plastic LED lamp cover
26	M31403400	shelf support
27	M31403500	shelf clip
28	M3140370L	left shelf
29	M3140370R	right shelf
30	E00008900	sensor

### 11.3. GSP3H-840/GSP3S-840/GSP3H-865/GSP3S-865/ GSP3H-900/GSP3S-900 Cabinet Assembly



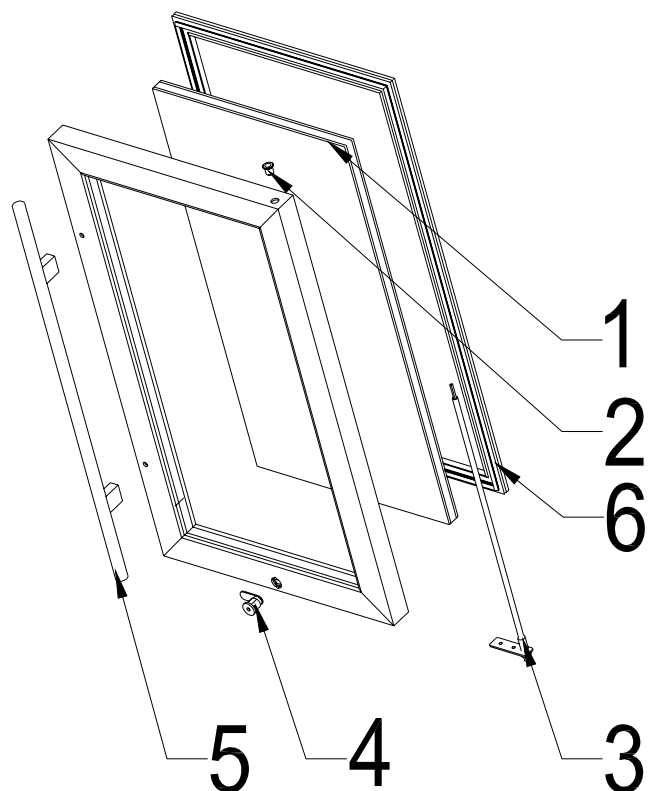


### 11.3. GSP3H-840/GSP3S-840/GSP3H-865/GSP3S-865/ GSP3H-900/GSP3S-900 Cabinet Assembly

Item	Part Number	Description
1	R32600300	condenser
2	P000036B0	plastic drain tray
3	E00002800	24V switch power
4	R00001400	drier
5	R00002500	compressor
6	M31404000	main lead support
7	R00002600	compressor accessory
8	E00009200	EBM IQ motor
9	M40102000	motor bracket
10	M00002400	200mm28°fan blade
11	R32600400	exhaust tube
12	M32601800	stainless steel drain tray
13	M3140280R	right bottom hinge support
14	E00009000	electronic ECO controller
15	P31402100	plastic controller cover
16	M32601300	kick panel
17	E00008900	sensor
18	M32602200	middle bottom hinge support
19	M3140280L	left bottom hinge support
20	R32600200	suction assembly
21	R32600100	evaporator
22	P000037B0	nylon rivet
23	M000020S0	evaporator fan cover
24	E00008600	EC axial fan
25	E31000600	LED light
26	P41000400	plastic LED lamp cover
27	M31403400	shelf support
28	M31403500	shelf clip
29	M3260240L	left shelf
30	M32602300	middle shelf
31	M3260240R	right shelf

### 11.4. Hinged door models Glass Door Assembly

(GSP0H-840/GSP1H-840/GSP0H-865/GSP1H-865/GSP0H-900/  
GSP1H-900/GSP2H-840 /GSP2H-865/GSP2H-900/ GSP3H-840/  
GSP3H-865/GSP3H-900)



## 11.4. Hinged door models Glass Door Assembly

### (GSP1H-865/GSP2H-865 /GSP3H-865)

GSP1H-865 A3190050L(left door)/A3190050R(right door)		
Item	Part Number	Description
1	A31900700	glass assembly
2	P314010B0	pivot bush
3	A31401000	torsion bar assembly
4	A00000100	door lock
5	M31404600	door handle
6	P319006B0	door gasket

GSP2H-865 A3140090L(left door)/A3140090R(right door)		
Item	Part Number	Description
1	A31401100	glass assembly
2	P314010B0	pivot bush
3	A31401000	torsion bar assembly
4	A00000100	door lock
5	M31404600	door handle
6	P314020B0	door gasket

GSP3H-865 A3140090L(left door)/A3140090R(right door)		
Item	Part Number	Description
1	A31401100	glass assembly
2	P314010B0	pivot bush
3	A31401000	torsion bar assembly
4	A00000100	door lock
5	M31404600	door handle
6	P314020B0	door gasket

GSP3H-865 A3260040C (centre door)		
<b>Item</b>	<b>Part Number</b>	<b>Description</b>
1	A31401100	glass assembly
2	P314010B0	pivot bush
3	A31401000	torsion bar assembly
4	A00000100	door lock
5	M31404600	door handle
6	P326004B0	door gasket

**·NOTES·**

## QUICK REFERENCE

Series Model Number :.....

Item Number :.....

Serial number:.....

Date of installation:.....

Address of first place of installation:.....

.....

Date of re-installation\* :.....

Address of second place of installation\* :.....

.....

\* If resold or relocated to other premises



[www.rhinoequipment.eu](http://www.rhinoequipment.eu)

**Rhino Equipment,  
9 Hunters Walk, Canal Street,  
Chester, CH1 4EB, United Kingdom  
Telephone: (+44) 01244 321320  
Fax: (+44) 01244 322345  
Email: [sales@staycold.co.uk](mailto:sales@staycold.co.uk)**

**[www.rhinoequipment.eu](http://www.rhinoequipment.eu)**

**Made in China**