



Top Load Washer 5.5kg

USER MANUAL

MTW55



CONTENTS

Safety information	2
Identifying parts of the Washer	3
Installation	4-6
Control Features and Functions	7-9
Wash Programs	10
Wash Guide	11-12
Cleaning & Maintenance	13
Troubleshooting Guide	14
Repairs, Service & Warranty	15
Specifications	16

SAFETY INFORMATION

Congratulations on your new Midea washer. This manual contains important information on the installation, use and care of your appliance. Please read this manual carefully before use. Follow instructions and keep the manual for future reference.



WARNING symbol

The WARNING symbol indicates information that concerns your personal safety



CAUTION symbol

The CAUTION symbol indicates information on avoiding damage to the appliance

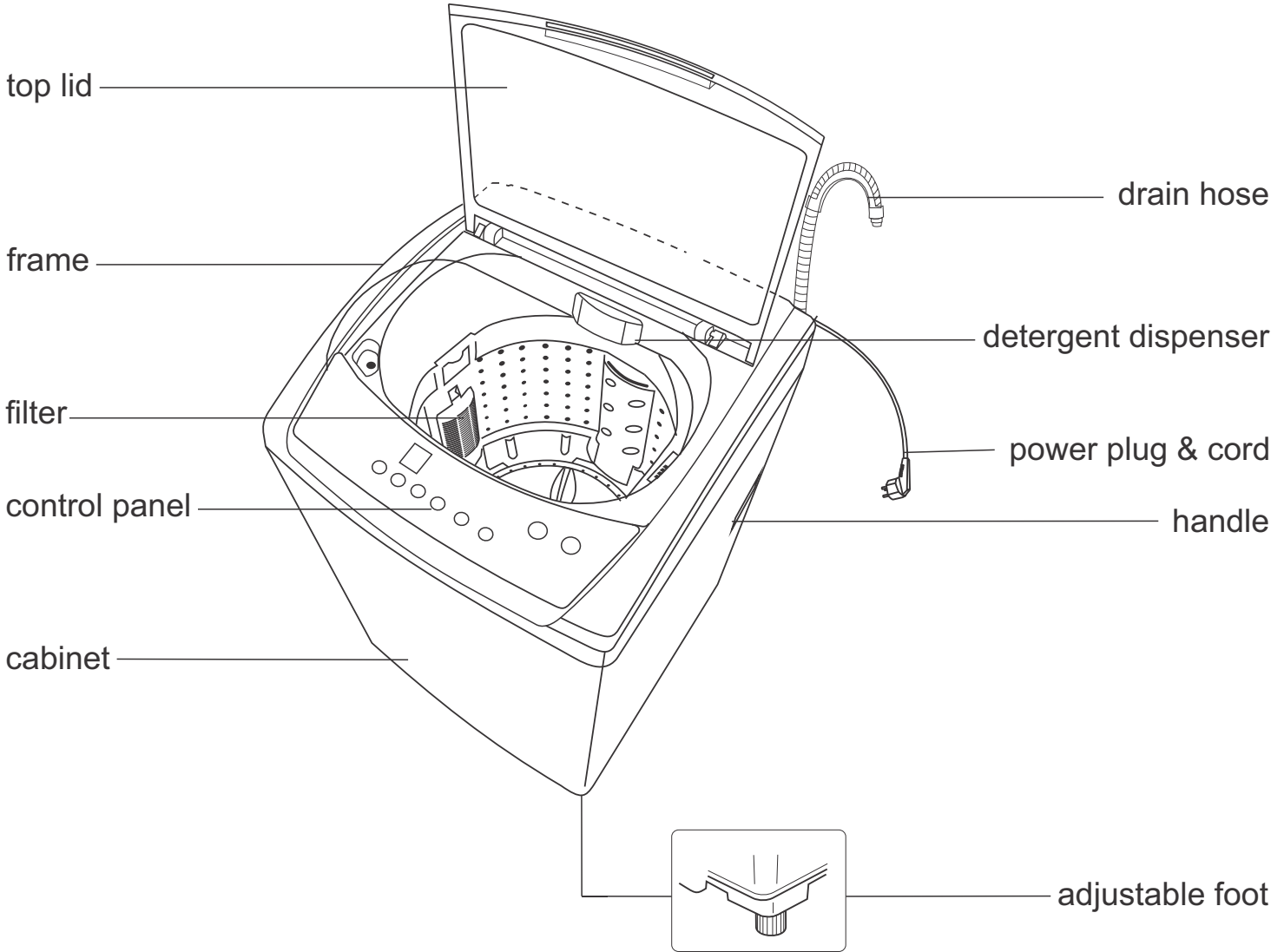
Safety precautions

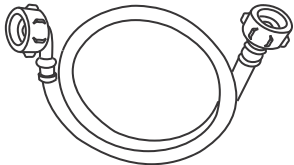
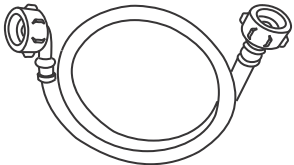

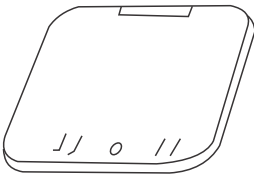
- This appliance is not intended for use by persons (including children) with reduced physical, sensory or mental capabilities, or lack of experience and knowledge, unless they have been given supervision or instruction concerning use of the appliance by a person responsible for their safety.
- Young children should be supervised to ensure that they do not play with the appliance.
- Keep ventilation openings in the appliance enclosure or in the built in structure clear of obstruction.
- Choose a location that is indoors, completely dry and away from damp environments.
- The washer is designed to operate on a single phase power supply within a voltage range of 240V/50Hz.
- Please keep the appliance away from substances which could cause ignition.
- Do not store inflammable materials such as ether, benzene, LP gas and glue etc near the appliance.
- Do not splash water on the rear of the appliance, for it may cause malfunction or electric shock.
- Before cleaning the appliance, always switch off and unplug it.
- Do not disassemble any part of the clothes washer.
- Do not insert your hand and remove items from the washer until it has come to a complete stop.
- Do not splash, wet or hose down the appliance. It is recommended to use a damp cloth when cleaning the cabinet.
- Do not attempt to wash fabrics that contain latex or rubber material.
- Do not place items that have come in contact with any flammable materials such as petrol/gasoline, kerosene, cleaning solvents, vegetable oil, cooking oil or any explosive substances.
- Do not place heat sources (candle, heater, etc.) on top of or near the washer.
- Do not sit children or heavy object on top of the washer.
- Do not pull the power cord out of the power socket by the cord. Always unplug the washer holding the plug.
- If the supply cord is damaged, it must be replaced by the manufacturer, its service agent or similarly qualified persons in order to avoid hazard.
- When disposing of the appliance, do so only at an authorised waste disposal centre.

Safety of children

Packaging (e.g. wraps, polystyrene, etc.) can be dangerous for children. There is a risk of suffocation. Keep packaging materials away from children. Remember to dispose of old appliances in accordance with local laws. Pull out the mains plug, cut off the mains cable, break or remove spring or bolt catches if fixed and ensure that children cannot lock themselves in the appliance when playing (there is risk of suffocation) or involve themselves in other dangers. Children cannot recognise the hazard present in household appliances themselves, therefore it is very important for parents to make adequate supervision and never let children play with appliances.

IDENTIFYING PARTS OF THE WASHER

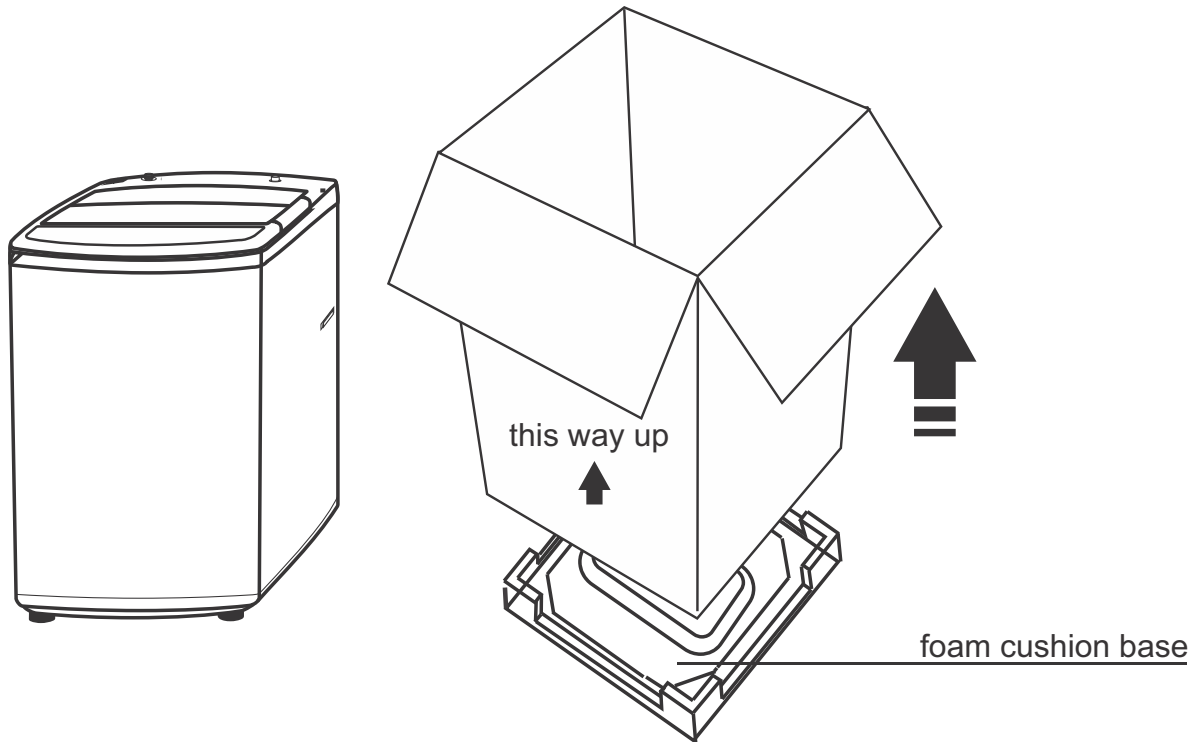


Accessories		
		 self-tapping screw
cold water inlet hose assembly	hot water inlet hose assembly	 base cover

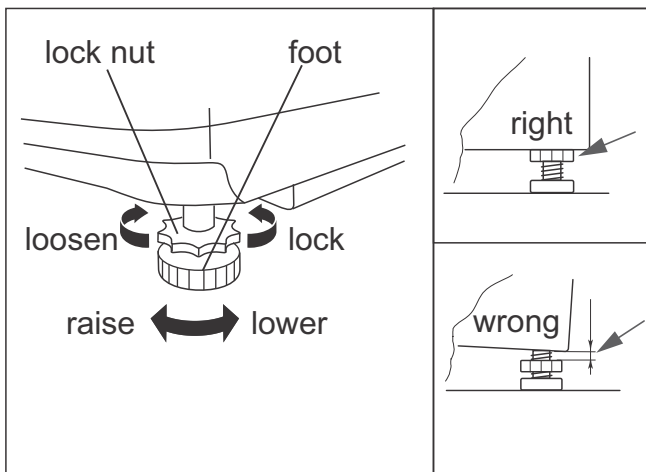
INSTALLATION

Unpack the clothes washer

1. Remove the washer from the carton by lifting the carton away from the foam cushion base.
2. Take out the base cover of the cabinet on the foam cover.
3. Lift the washer lid and remove the accessories from inside the washer.
4. Ensure the foam cushion base is removed before installing the washer in place.



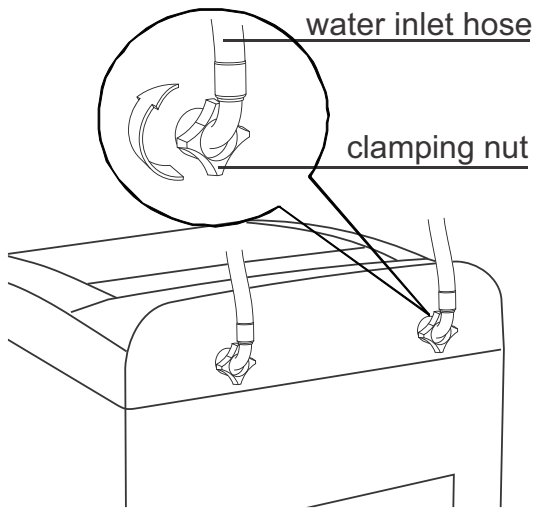
Level the clothes washer



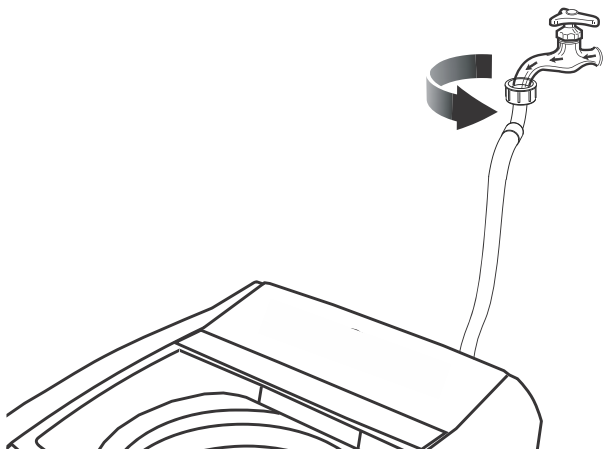
The clothes washer can be levelled by adjusting the front foot. Adjust the foot by turning clockwise to extend or anti clockwise to shorten. Slightly tilt the clothes washer back to access the adjustable foot. Ensure all four corners are flat and level to the surface it is placed on. Ensure the clothes washer is level and stable prior to starting each wash. An unstable clothes washer can cause the drum to shake during a wash and knock against the cabinet.

INSTALLATION

Install the water inlet hose



1. Fasten one end of the inlet hose to the tap. Ensure there is a rubber washer inside the hose before fastening. The washer prevents water leakage.
2. Securely tighten the other end of the inlet hose to the clothes washer inlet valve. Ensure the rubber washer is inside the hose before tightening.
3. When tightening the clamping nut, apply even pressure. Do not apply too much force or twist the valve as this may damage or break the valve joint.

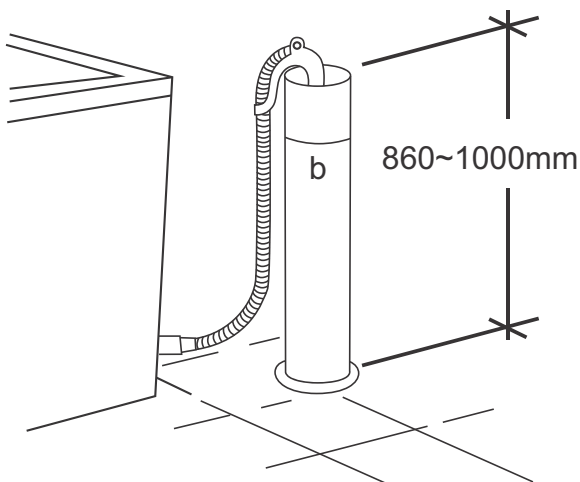


CAUTION

PLEASE NOTE

Be sure to install the correct HOT and COLD water inlet hoses. Incorrect installation can reduce performance or damage the clothes washer.

Position the drain hose



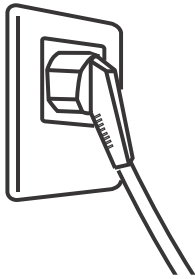
Ensure the drain hose is correctly mounted between 860 to 1000mm above the ground.

The drain water may overflow if the drain hose is below 860mm or decrease flow if placed above 1000mm.

Diameter of "b" should be not less than 30mm, and flow capacity not less than 40L/min.

INSTALLATION

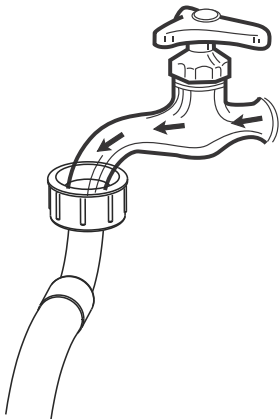
Connect to a power source



NOTE: Ensure your hands are completely dry before touching the mains outlet, any electrical plugs or cables.

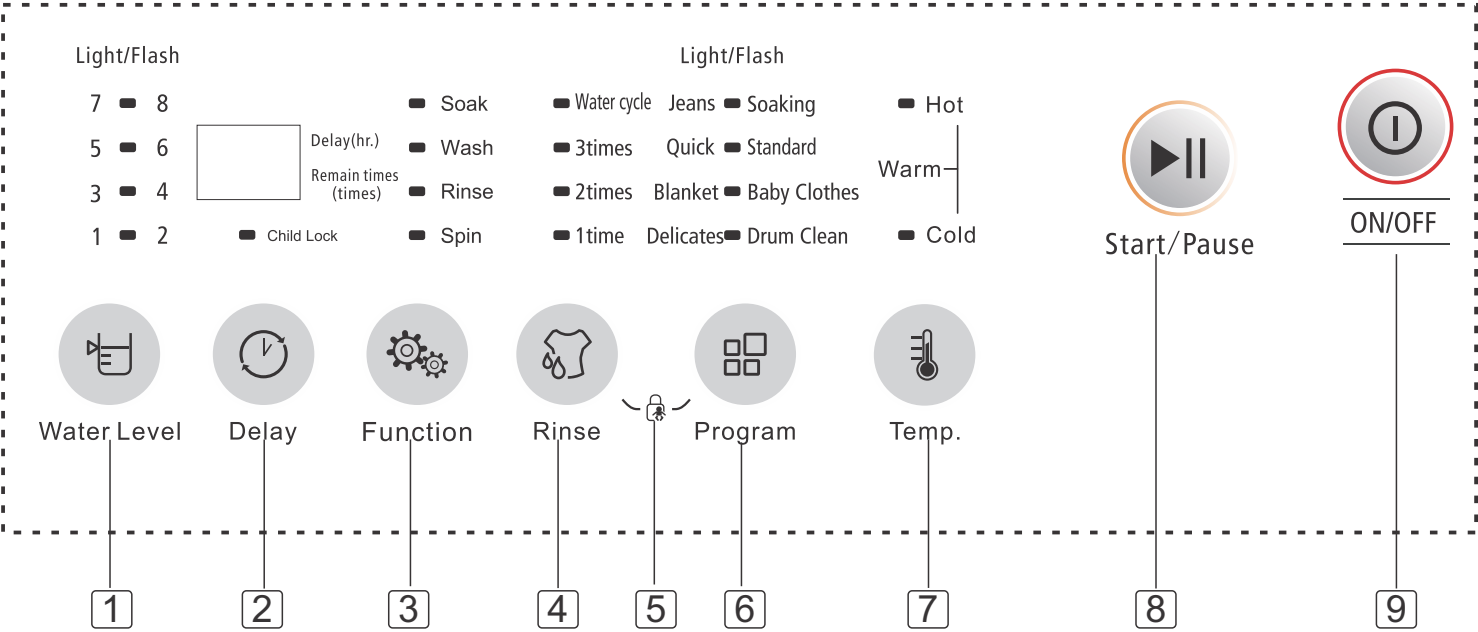
Ensure the clothes washer is securely plugged into the mains power supply and it is switched to the ON position.

Open the main water supply



Ensure the water mains are in the open position and a steady water supply is available to the clothes washer.

CONTROL FEATURES AND FUNCTIONS



1	Water Level	<p>Press this button to select from the lowest (1) to the highest (8) water level. Each press will increase the selected water level by 1.</p> <p>Levels 1 - 3 - 5 - 7 will be selected when the corresponding light is solid</p> <p>Levels 2 - 4 - 6 - 8 will be selected when the corresponding light is flashing</p>
2	Delay	<p>Press this button to enable the delay start feature. A delay start can be selected between 1 to 24 hours. Each press will increase the delay time by 1 hour. Or long press the Delay button, every 0.5s delay time will increase by 1 hour.</p> <p>When the delay function is activated (do not press Child Lock button), press the Delay button to check the preset program and functions, and release the button to return to the delay state.</p> <p>To disable, press the Delay button until the display shows "0H".</p> <p>NOTE:</p> <ul style="list-style-type: none">It should be pressed before the program starts. If the selected program is already started, press the ON/OFF button to reset the program.When Delay starts, if the lid is open, there will be a "delay alarm" that will be released when the lid is closed.In Soaking, Jeans and Baby Clothes programs, after the delay starts, the washing machine will undergo fuzzy weighting and then start the delay time. The water level can be selected within 1 minute after the fuzzy weighting is completed. After that, the machine will enter the normal delay state, with the exception of Delay, Child Lock and ON/OFF button, all buttons do not work.
3	Function	<p>The customer can freely set up a single process or a combination of soaking, washing, rinsing and spinning as required.</p> <p>Press this button to adjust the combination of SOAK, WASH, RINSE, and SPIN cycles for the selected program. The cycle selection will change with each press of the button.</p> <p>After the program is started, one of the lights in the soak, wash, rinse and spin cycles will flash, depending on the actual process.</p>

CONTROL FEATURES AND FUNCTIONS

4	Rinse	<p>Before starting, press this button to adjust the RINSE times from 1 time to 3 times and select Water Cycle function to your selected wash program.</p> <p>NOTE: When the Water Cycle function is selected, there will be no drainage and spinning after the last rinse, and the water will remain in the tub. If drainage or spinning are required, customer should re-select a Drain or Spin program.</p>
5	Child Lock	<p>Once a wash program has started, press both Rinse and Program for 3 seconds to lock all buttons on the control panel except ON/OFF. Repeat the process to unlock the control panel.</p> <p>NOTE: When the Child Lock starts, an alarm will occur if the lid is opened during operation. In 20 seconds, there will be an "E3" alarm. If the lid is closed within 20 seconds, the alarm will be cancelled and the machine will continue to run the previous program. After 20 seconds, the display will show "CL" alarm, called "normal fault alarm". The drain pump will start working for 90 seconds and drain the water from the washing machine. This alarm is displayed every 15 minutes and is released only when the machine is powered off or unplugged.</p>
6	Program	<p>Press this button to select from the 8 wash programs.</p> <p>Jeans - Quick - Blanket - Delicates will be selected when the corresponding light is solid</p> <p>Soaking - Standard - Baby Clothes - Drum Clean will be selected when the corresponding light is flashing</p>
7	Temp.	<p>Press this button to select the water temperature used during a wash. Choose between hot, cold and warm (both hot and cold lights will be displayed to indicate warm).</p>
8	Start/Pause	<p>Press this button once a wash program has been selected to start the program. Once a wash has begun, press this button to pause the program. Press Start/Pause again to resume.</p>
9	ON/OFF	<p>Press this button to switch the washer on and off.</p> <p>Press once to switch on. When finished a wash program, press to switch off.</p>

Note:

The clothes washer will automatically stop if the lid is left open once the SPIN cycle begins. If this occurs, there will be a warning buzzer and error code displayed. The clothes washer will not start a wash cycle if the selected water level can not be reached. Please refer to Page 14 for troubleshooting instructions.

CONTROL FEATURES AND FUNCTIONS

Fuzzy Weighting Function

1. Press the ON/OFF button.
2. Put in the washing load & detergent and then close the lid.
3. Select a washing program (only Soaking, Jeans and Baby Clothes have this feature).
4. Press the Start/Pause button.

The washing machine will start fuzzy weighting function, the water level will be automatically selected according to the load weight.

NOTE:

- This feature is not available when there is water in the tub.
- The fuzzy weighting function does not appear if the water level is selected before pressing the Start/Pause button.
- After pressing the Start/Pause button, the washing machine will run the fuzzy weighting function. Consumer can also choose the water level to set the water level.

Self Power off Function

The washing machine will power off automatically in following status:

1. After a wash cycle is complete.
2. When a wash program is not started within 10 minutes.
3. One hour later when the machine is paused during running process.

Auto Unbalance Adjustment

During the spin process, if the laundry is not evenly placed, the washing machine will feel it is unbalanced and attempt to correct itself. The washing machine attempts to correct imbalance by adding water to a set level, adjusting the distribution of clothes, and draining water. It will try to correct itself three times. If unsuccessful, an alarm will be issued and the clothes will need to be manually distributed around the bowl. The rinse LED flashes during the unbalance adjustment.

Power Failure Memory Function

If the power supply becomes off suddenly during operation, the machine remembers the current operation state. When power is on, the machine returns to former operation state automatically.

WASH PROGRAMS

Program	Description	Default rinse time	Default water level	Water temp	Estimated total time(min)
Jeans	Suitable for heavy stained/wearable clothes.	2	8	Hot Warm Cold(default)	48
Quick	A quick wash for lightly soiled small loads.	1	2	Hot Warm Cold(default)	10
Blanket	Suitable for washing large size loads such as curtain/bed sheet etc. There are 15 minutes of additional movement soaking time during the washing process (Movement soaking can make the effect of soaking better).	3	7	Hot Warm Cold(default)	74
Delicates	Recommended for delicate or lightly soiled fabric.	2	4	Hot Warm Cold(default)	38
Soaking	Suitable for washing more dirty clothes. There is an additional soaking time of 30 minutes during the washing process.	2	7	Hot Warm Cold(default)	78
Standard	Standard fabric washing program, suitable for washing ramie cotton fabric. Wash once, rinse once, the spin time is a bit long.	1	7	Hot Warm(default) Cold	62
Baby Clothes	Increase rinse time to reduce detergent residue on clothing. Suitable for washing children's clothes.	3	8	Hot Warm Cold(default)	56
Drum Clean	By intermittent spinning, cleaning dirt of inner & outer tub and impeller.	1	8	Cold(default)	28

Please note: the table above is intended as a reference guide only, individual results may vary. Total time includes filling and draining of water. The times mentioned are based on averages and can be effected by water pressure and drainage speed.

WASH GUIDE

Before you wash

Sorting

To get the best wash results it pays to sort your laundry before washing.

Read care labels as they will tell you how the fabric of each garments should be washed.

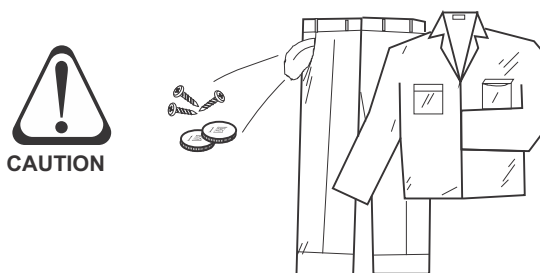
Sort clothes according to the type of and amount of soil. For example oily soils will require a higher temperature to lift the stain, whereas mud and blood stains are better washed in cold as heat can set the stain further into the fabric. Pretreating stains will also improve upon wash results.

Always sort whites from coloured fabrics, and be sure to wash lint givers (such as towels) separate to lint collectors (such as synthetics, socks and corduroy like fabric).

Loading

Before each wash be sure to check pockets and remove loose items that may cause damage to both your washer and your clothes. Close all zippers, hooks and eyes to prevent them catching on other garments.

Evenly distribute laundry around the bowl, and do not overload the clothes washer as this will affect its performance.



Detergent

We recommend the use of a domestic top loader powder or liquid. The amount of detergent to use will vary depending on the size of the load, the amount of soiling and the type of laundry to be washed. For example, jeans and heavily soiled work clothes will require more detergent, whereas towels will usually require less.

Follow the instructions on the back of the detergent to determine the correct dose for the laundry to be washed. Too much detergent does not contribute to better wash results as the rinse will not be as clean and efficient. This will unnecessarily add to environmental pollution and a build up on the inside of your washer. Too little detergent may also cause dirt and lint to settle back onto your clothes.

WASH GUIDE

Adding detergent

Add measured detergent to the detergent dispenser drawer. Detergent is flushed from the dispenser drawer at the beginning of the wash phase.

Fabric softener may be added to the softener dispenser and will automatically be added during the last rinse cycle. Do not add more than the recommended one time dose per cycle and be sure to reduce the amount used for smaller wash loads.



It is not recommended that liquid detergents or fabric softeners are used when selecting a long wash delay as they can congeal in the dispenser draws.

Do not add detergent, bleach or starch into the Softener Dispenser.

Washing

To select a wash program:

- a. Press the ON/OFF button
- b. Select a wash program
- c. Adjust the water level or temperature if required
- d. Press the Start/Pause button

End of wash cycle

When the wash cycle is complete, the buzzer will sound 6 times and then the power will automatically switch off.

For safety, it is recommended that at this point you turn off the water supply to the washer, turn off the power and remove the power plug from the main power source.

CLEANING & MAINTENANCE



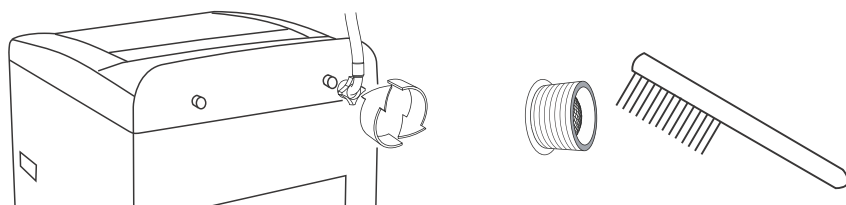
- Always disconnect the clothes washer from the mains power source before performing any maintenance or cleaning of the appliance.
- For optimal performance, regular maintenance and cleaning is highly recommended.
- Regular maintenance and cleaning will extend the service life of the clothes washer.

Cleaning the outer surface of the washer

To clean the cabinet and control panel, use a damp cloth and wipe dry.

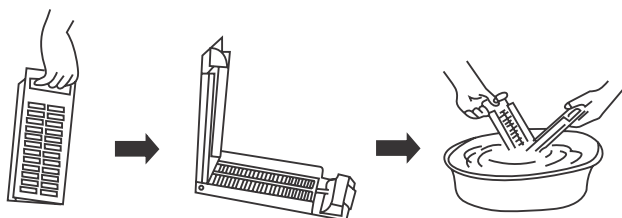
Note: Cleansers such as soap powder, abrasive cleaning power, alkali cleansers, chemical cloth, thinners, alcohol, acid petroleum products and hot water should not be used to clean the washer as they may damage the painted cover and plastics.

Cleaning the water inlet hose



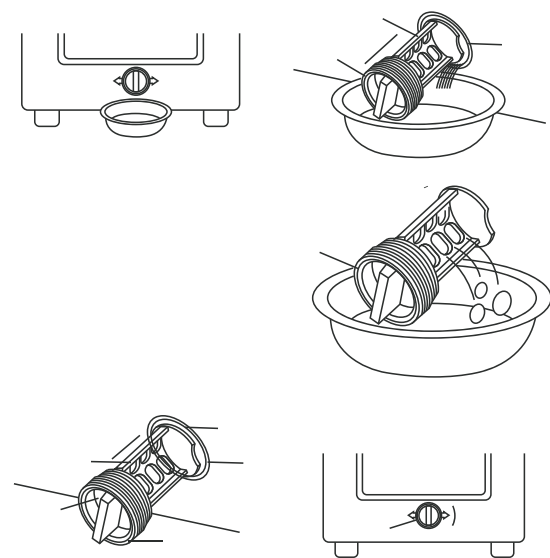
Clean the water inlet hose joint by unscrewing and removing the joint from the washer. Clean the screen filter gently by using a brush.

Cleaning the lint filter



Be sure to clean the lint filter often to keep the washer clean. Open the washer lid and remove the lint filter from inside the drum. Open the filter and clean using water. Restore and fix it.

Cleaning the drain pump lint filter



1. Drain the water from the drain pump. Have a container in place to catch the drained water. Open by turning cover anti-clockwise.
2. Remove the lint filter and gently clean with water.
3. Let filter dry before replacing. Align convex with pump hole.
4. Replace the pump cover by tightening in a clockwise direction.

Note: If the drain filter is not cleaned at proper time (every 10 times of use), drain problem could be caused.

Please check the points below after maintenance:

- Is there any damage to the power lead?
- Can the power plug be inserted into the power socket correctly?
- Do the filters need cleaning?

TROUBLESHOOTING GUIDE

If the clothes washer does not perform as expected, malfunctions or an alarm is sounding, please check the following list of possible solutions.

If a solution can not be found or the problem persists, please contact Midea service (refer to page 15).

Do not, under any circumstance, dismantle the appliance yourself.

FAULT	POSSIBLE SOLUTION
No water is flowing in	<ul style="list-style-type: none"> • Check the power source is ON • Check if the circuit breaker has been triggered or fuse is not burnt out • Check the water supply is in the open position and the water pressure reaches the minimum required by the washer • Check the inlet hose has been installed correctly • Check the filter of the inlet valve is not blocked or obstructed • Check if the Start/Pause button has been pressed
Not washing	<ul style="list-style-type: none"> • Check the power is on and the circuit breaker has not been tripped or the fuse burnt out • If the minimum water level is not reached • Check if delay start has been set
Not draining	<ul style="list-style-type: none"> • Check the drain hose is not too high • Check the drain hose is not obstructed • Check the drain pump is not obstructed
Abnormal or not spinning	<ul style="list-style-type: none"> • Check the lid is completely closed • Check that the laundry inside the drum has not accumulated to one side • Check the laundry is evenly distributed • Check that the laundry does not exceed the rated capacity • Check the clothes washer is level

The following table is a list of the fault indicators and corresponding alarms.

DISPLAY	CAUSE	SOLUTION	
E1	Alarm for abnormal water intake.	Check the water tap is opened or not.	Note: To stop the alarm, open the lid. Close the lid once the issue has been remedied and resume the wash program. If problems persist, contact Midea customer care when convenient.
E2	Alarm for water drain has not finished.	Check the water level sensor and drain pump.	
E3	Alarm for lid not closed before wash and spin.	Close the lid.	
E4	Alarm for washing stay at one side.	Manually balance clothes in the barrel by hands.	

REPAIRS, SERVICE & WARRANTY

It is hazardous for anyone installing, removing, repairing servicing or testing this appliance. Only an Authorised Service Person can carry out servicing or repairs to this appliance.

If service is required

If you have a problem which persists after you have made the checks listed in the Troubleshooting Guide, please contact:

Midea Customer Care on 1300 132 371

Please refer to the enclosed warranty card or visit www.mideaappliances.com.au for warranty information. Ensure you have the appliance model number and proof of purchase handy before calling Midea Customer Care to enquire about a warranty claim.

Complete and retain the following information for your records:

Model No.	
Serial No.	
Date of purchase	
Retailer	

Please retain proof of purchase for warranty claims.

SPECIFICATIONS

Model		MTW55
Rated Motor Input Power		360W
Rated Capacity of Wash and Spinning		5.5Kg
Voltage		240V
Frequency		50Hz
Washing Type		Pulsator
Water Pressure		0.1MPa - 0.6MPa
Max. Spin Speed		700RPM
Dimensions	Height	930mm
	Width	515mm
	Depth	525mm
Net Weight		31Kg
IP Rating		IPX4

NOTE: This product is subject to continuous improvement, specifications are subject to change without prior notice.

This product was tested in accordance with AS/NZS 2040.2 and AS/NZS 6400 using program: Standard, Water Level 7, which is the program recommended for a normally soiled cotton load at rated capacity.

