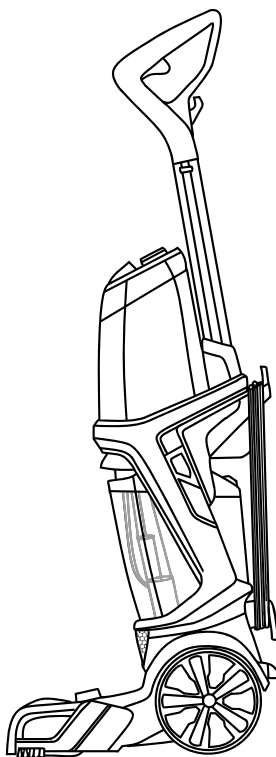
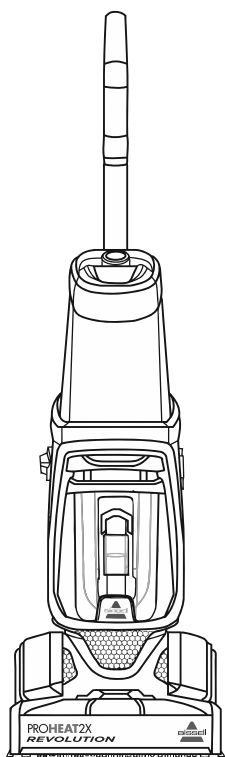


PROHEAT 2X[®] REVOLUTION[™] Deep Cleaner

USER GUIDE
1858 SERIES



IMPORTANT SAFETY INSTRUCTIONS

READ ALL INSTRUCTIONS BEFORE USING YOUR DEEP CLEANER.

When using an electrical appliance, basic precautions should be observed, including the following:

WARNING

To reduce the risk of fire, electric shock, or injury:

- » Unplug from electrical socket when not in use and before cleaning, maintaining or servicing the appliance.
- » This appliance can be used by children aged from 8 years and above and persons with reduced physical, sensory or mental capabilities or lack of experience and knowledge if they have been given supervision or instruction concerning use of the appliance in a safe way and understand the hazards involved. Cleaning and user maintenance shall not be made by children without supervision.
- » Children should be supervised to ensure that they do not play with the appliance.
- » If the supply cord is damaged, it must be replaced by the manufacturer, its service agent or similarly qualified persons in order to avoid a hazard.
- » Do not run appliance over cord.
- » Keep hair, loose clothing, fingers, and all parts of body away from openings and moving parts of the appliance and its accessories.
- » Use only the type and amount of liquids specified under the Operations section of this guide.
 - » Do not leave appliance when plugged in.
 - » Always connect to a properly earthed electrical socket. Do not modify earthed plug.
 - » Use indoors only.
 - » Do not allow to be used as a toy.
 - » Use only as described in the user guide.
 - » Use only manufacturer's recommended attachments.
- » Do not use with damaged cord or plug.
- » Do not immerse in water or liquid.
- » If appliance is not working as it should, has been dropped, damaged, left outdoors, or dropped into water; do not attempt to operate it and have it repaired at an authorised service center.
- » Liquid or steam must not be directed towards equipment containing electrical components.
- » Do not pull or carry by cord, use cord as a handle, close door on cord, or pull cord around sharp edges or corners.
- » Keep cord away from heated surfaces.
- » Do not unplug by pulling on cord.
- » To unplug, grasp the plug, not the cord.
- » Do not handle plug or appliance with wet hands.
- » Do not put any object into openings.
- » Do not use with any opening blocked; keep free of dust, lint, hair, and anything that may reduce air flow.
- » Turn off all controls before unplugging.
- » Use extra care when cleaning on stairs.
- » Do not use to pick up flammable or combustible liquids, such as petrol, or use in areas where they may be present.
- » Do not pick up toxic material (chlorine bleach, ammonia, drain cleaner, etc).
- » Do not use appliance in an enclosed space filled with vapors given off by oil base paint, some mothproofing substances, flammable dust, or other explosive or toxic vapors.
- » Do not pick up hard or sharp objects such as glass, nails, screws, coins, etc.
- » Keep appliance on a level surface.
- » Do not carry appliance while in use.
- » Unplug before attaching the TurboBrush™ tool.
- » Do not pick up anything that is burning or smoking, such as cigarettes, matches, or hot ashes.

WARNING

TO REDUCE THE RISK OF FIRE AND ELECTRIC SHOCK, USE INDOORS ONLY. DO NOT IMMERSE. USE ONLY ON SURFACES MOISTENED BY THE CLEANING PROCESS. USE ONLY BISSELL CLEANING PRODUCTS INTENDED FOR USE WITH THIS MACHINE.

TO REDUCE THE RISK OF FIRE AND ELECTRIC SHOCK, ALWAYS INSTALL FLOAT BEFORE ANY WET PICK-UP OPERATION.

SAVE THESE INSTRUCTIONS

FOR OPERATION ON A 220-240 VOLT A.C. 50-60 HZ POWER SUPPLY ONLY.

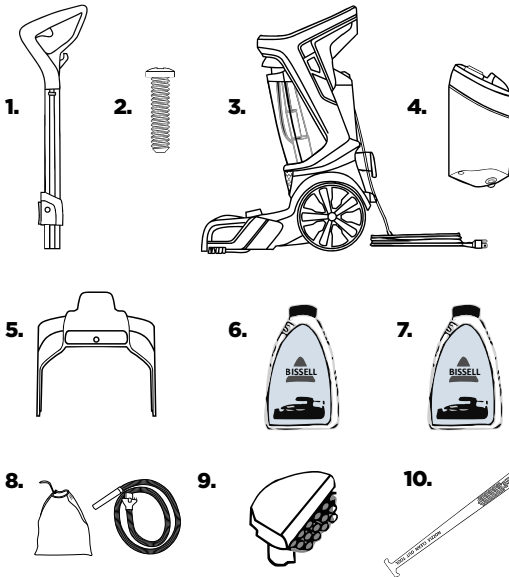
This model is for household use only.

Thanks for buying a BISSELL deep cleaner!

We love to clean and we're excited to share one of our innovative products with you. We want to make sure your deep cleaner works as well in two years as it does today, so this guide has tips on using (pages 7-13), maintaining (pages 14-17), and if there is a problem, troubleshooting (page 18).

In just a few simple assembly steps, you'll be ready to deep clean. Flip to page 5 and let's get started!

What's In The Box?



1. Upper Handle
2. 1 Screw attached to Upper Handle
3. Base with Dirty Water Tank
4. Clean Water Tank
5. Carry Handle
6. BISSELL 2X Professional Formula
7. BISSELL Oxy Boost
8. Accessory bag & hose
9. Attachments/accessories (vary by model)
10. Nozzle Clean Out Tool

NOTE: Not all accessories come with every model.

Safety Instructions 2

Product View 4

Assembly 5

Cleaning Formulas 6

Operations 7-13

Maintenance & Care 14-17

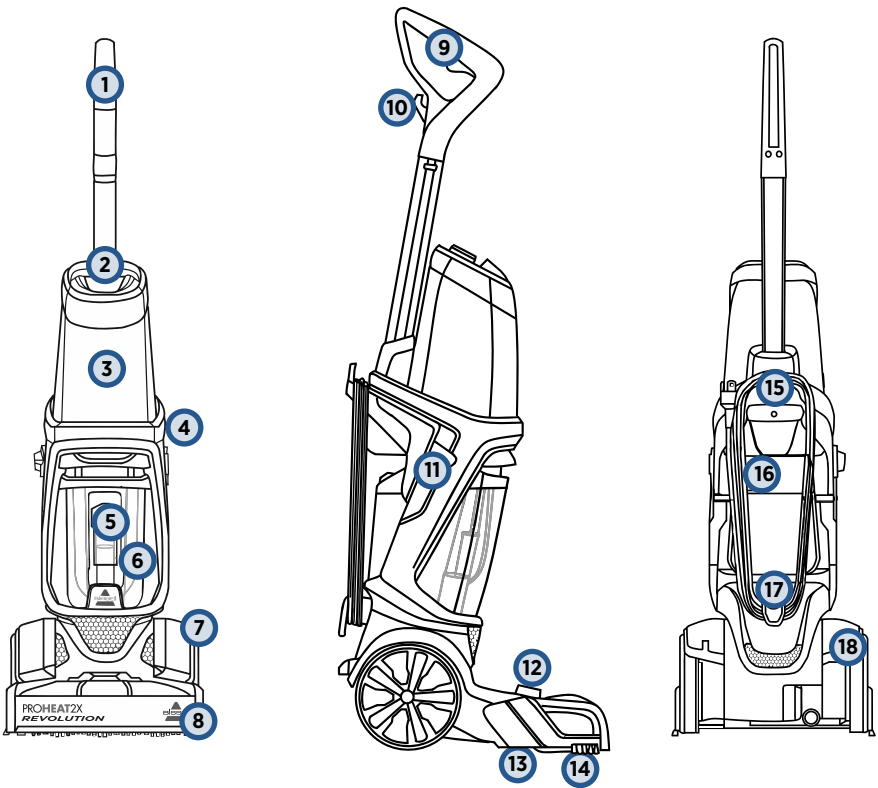
Troubleshooting 18

Guarantee 19

Service 19

Parts & Supplies 20

Getting to Know Your Deep Cleaner



- | | | | |
|----|------------------------------------------|----|-----------------------------------|
| 1 | Upper Handle | 11 | Cleaning Mode Switch |
| 2 | Formula Cap | 12 | Accessory Hose Door |
| 3 | Clean Water Tank
(3.7 Litre Capacity) | 13 | Belt/Brush Access Plate |
| 4 | Power Button | 14 | EdgeSweep™ Brushes |
| 5 | Float Stack | 15 | Carry Handle |
| 6 | Dirty Water Tank | 16 | Rubber Tab |
| 7 | Belt Access Door | 17 | Quick Release for
Wrapped Cord |
| 8 | Foot | 18 | Recline Pedal |
| 9 | Spray Trigger | | |
| 10 | In-Use Cord Clip | | |

Assembly

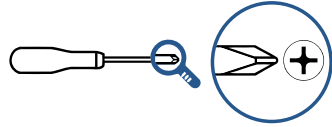
WARNING

Do not plug in your deep cleaner until you are familiar with all instructions and operating procedures.

Your deep cleaner comes in four easy-to-assemble components and an accessory bag.

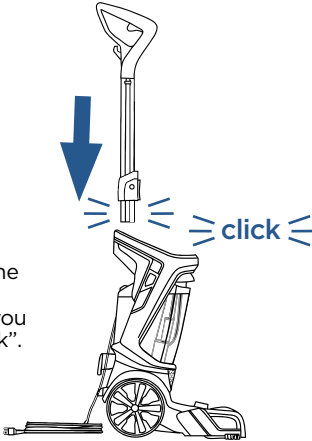
- Base
- Upper Handle
- Clean Water Tank
- Carry Handle

In step 3, you will need to use a Phillips screwdriver.



1

First, insert the upper handle at the top of the base until you hear a “click”.



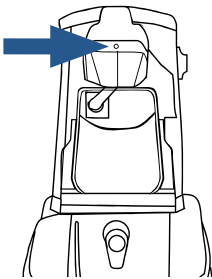
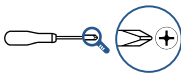
2

Side View

Next, align the carry handle with the slots on either side of the base (behind the power switch and cleaning mode switch). The carry handle will “click” into place.

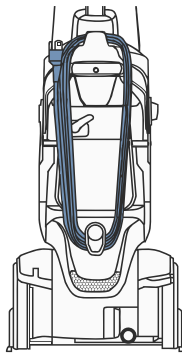
Important: Do NOT put the clean tank on the machine until step 4.

3



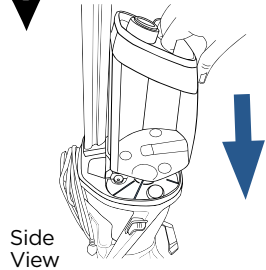
Using a Phillips screwdriver, secure the carry handle with the screw that’s taped to the upper handle.

4



Wrap the cord around the carry handle and quick release hook.

5



At the bottom of the upper handle, align the clean water tank with the grooves and slide the tank into place.

Cleaning Formulas







WARNING

To reduce the risk of fire and electric shock due to internal component damage, use only BISSELL cleaning fluids intended for use with the deep cleaner.

Keep plenty of genuine BISSELL formula on hand so you can clean whenever it fits your schedule.

Always use genuine BISSELL deep cleaning formulas. Non-BISSELL cleaning formulas may harm the machine and may void the guarantee.

PRETREAT PRETREAT SPOTS AND STAINS TO IMPROVE CARPET CLEANING PERFORMANCE		BOOST CARPET CLEANING FORMULA ENHANCER
		
Stain PreTreat	Pet Stain PreTreat	Oxy Boost
Pretreat to penetrate and loosen tough stains	Pretreat to help remove tough pet stains and odours	Removes old, set-in stains permanently

2X* CONCENTRATED CLEANING FORMULAS					
WASH & PROTECT			WASH & REMOVE	WASH & REFRESH	
					
Professional Stain & Odour	Pet Stain & Odour	Stain & Odour	Allergen Removal	Ambipur™ Blossom & Breeze	Natural Orange
Professional strength to remove extra tough stains and odours <i>Includes Scotchgard™ Protector</i>	Removes tough pet stains and contains odour removal technology <i>Includes Scotchgard™ Protector</i>	Removes tough stains and odours <i>Includes Scotchgard™ Protector</i>	Helps remove allergens like pet, pollen and dust mite waste	Powerful cleaning with a refreshing spring scent	Powerful cleaning with a refreshing natural orange scent

ONLY BISSELL Wash & Protect formulas protect from future stains with Scotchgard™ Protector. Scotchgard™ is a trademark of 3M®.

*60 mL of 2X concentrated formula is equivalent to 120 mL of non-concentrated formula.

Tips Before Carpet Cleaning

- If cleaning an entire room, consider moving your furniture to another area.
- Use a dry vacuum cleaner over area before using your deep cleaner.
- Pre-treat stains with BISSELL PreTreat to improve performance on tough stains and ground-in dirt.

Customize Your Clean & Maximize Your Results

Pretreat Pesky Stains



Pretreat stains for improved deep cleaning performance.

Stains may include but are not limited to:

- » coffee
- » dirt
- » oil
- » cosmetic makeup
- » pet messes

Choose Your Formula



Prepare your deep cleaner using the dosing instructions or fill lines.

Always use genuine BISSELL deep cleaning formulas.

Non-BISSELL cleaning solutions may harm the machine and may void the warranty.

ONLY BISSELL protects from future stains with Scotchgard™ Protector.

Scotchgard™ is a trademark of 3M®

60 mL is equivalent to 120 mL of non-concentrated formula.

BOOST Your Deep Clean



DESIGNED TO MAXIMIZE THE PERFORMANCE OF DEEP CLEANING MACHINES

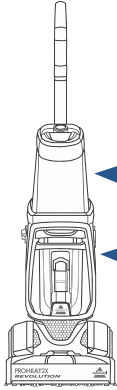
BISSELL Boost OXY
Life makes messes, especially on carpet. OXY boost removes those stains from your life - permanently. Tough stains are no match for this oxygen formula.

Always use genuine BISSELL deep cleaning formulas. Non-BISSELL cleaning solutions may harm the machine and may void the warranty.

Filling Your Clean Water Tank:

2X Concentrated Formula

1

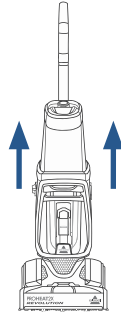


Clean Water Tank
(3.7 Litre)

Dirty Water Tank

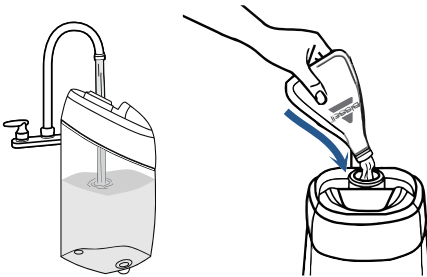
The clean water tank is at the top of the machine.

2



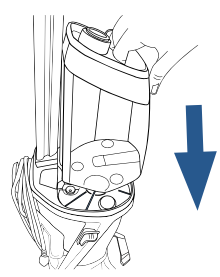
Lift the clean water tank straight up to remove from the machine.

3



Unscrew the cap from the clean water tank. Add hand hot tap water to the water fill line. Next, reference the chart below for formula amounts to add to the tank. Twist cap back into place.

4



At the bottom of the upper handle, align the clean water tank with the grooves and slide the tank into place.

Filling Your Clean Water Tank: cont.

2X Concentrated Formula

FORMULA FILLING INSTRUCTIONS	DEEP CLEAN MODE	EXPRESS CLEAN MODE
BISSELL 2X Concentrated Formulas	Fill water to the Water Fill Line, then add 74 mL or one cap full of formula.	Fill water to the Water Fill Line, then add 37 mL or one half cap full of formula.

NOTE: Fill with hand hot (140°F/60°C MAX) tap water and add the appropriate BISSELL solution. **DO NOT USE BOILING WATER. DO NOT HEAT WATER OR TANK IN MICROWAVE.** Do not substitute BISSELL 2X Formula cleaning solution with other household cleaning products.



Pour in more power with BISSELL Oxy Boost

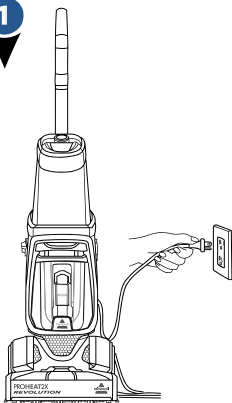
- Fill tank with water and 2X formula (Step 3 above).
- Add 60 mL of BISSELL Oxy Boost per 3.7 L of water.
- The ProHeat 2X Revolution has a 3.7 L clean water tank.

ATTENTION

Do not over wet carpet. Be careful not to run over loose objects or edges of area rugs. Stalling the brush may result in premature belt failure.

Cleaning Your Carpet

1



Plug into a properly earthed outlet.

2

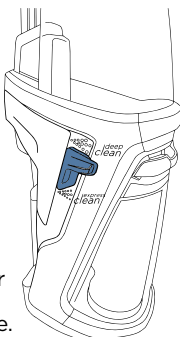
Select cleaning mode:

Deep Clean

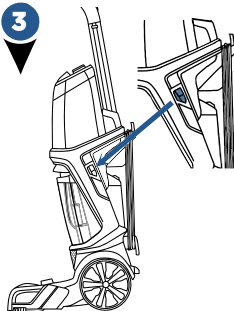
Delivers a deep clean to your carpet.

Express Clean

Provides a lighter clean with about 1 hour of dry time.

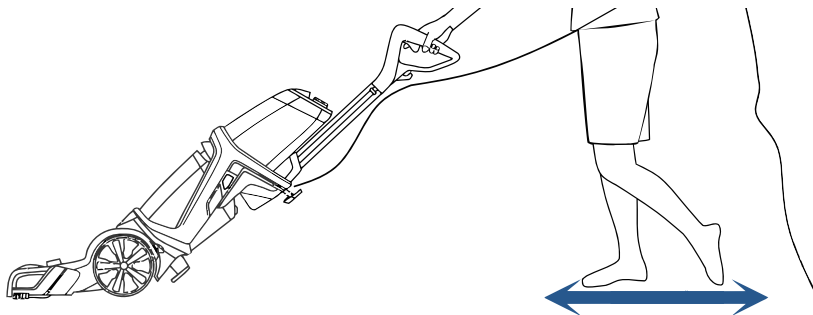


3



Press the power button to turn the machine on. To recline your machine for use, press the recline pedal with your foot.

4



Deep Clean Mode:

1. Press the spray trigger to apply solution while making **2 slow wet passes** - 1 forward and 1 back.
2. Release the trigger.
3. Make **2 slow dry passes** - 1 forward and 1 back, to suck up the dirty solution. **(Do not hold down the trigger for this step.)**

NOTE: For best cleaning performance, clean with your machine in Deep Clean Mode.

Express Clean Mode:

1. Press the spray trigger to apply solution while making **2 wet passes** - 1 forward and 1 back.
2. Release the trigger.
3. Make **2 dry passes** - 1 forward, 1 back to suck up the dirty solution. **(Do not hold down the trigger for this step.)**

NOTE: In Express Clean Mode, the dirty tank will not get as full as when cleaning with Deep Clean Mode.

ATTENTION: To prevent damage to Berber carpets, avoid repeated strokes in the same area.

Cleaning Area Rugs

Important! Please check manufacturer's tag before cleaning area rugs for any specialised cleaning instructions. Not for use on silk or delicate area rugs.

1 Select Express Clean Mode.

2 Test in a small inconspicuous area first for colorfastness.

3 Important: Keep the foot of the deep cleaner perpendicular to the rug's edge with each cleaning pass to prevent damage.

Helpful Cleaning Tips

- » Regularly clean your high-traffic area rugs in Express Clean mode to remove the forgotten dirt.
- » Clean on a day with low humidity to help carpets dry faster.

While Cleaning

- » Turn on any available ceiling fans and make sure the room is well ventilated to help the airstream in your home.
- » Additional dry strokes will aid in faster drying of carpet. The exception is when using Express Clean Mode. With this exception, the directions need to be followed exactly.

After Cleaning

- » Use a portable fan directed towards the surface of the carpet and/or a dehumidifier to aid in drying carpet.
- » Adjust your heat up a few degrees in the winter and use your air conditioning for dryer air in the summer.
- » On warm dry days, simply opening the windows can be an eco-friendly option to assist in drying carpet.
- » When the carpet feels dry to the touch, return furniture that was removed. To be sure to avoid staining, place wax paper or aluminum foil under the legs. Wait at least another three hours before removing wax paper or foil.

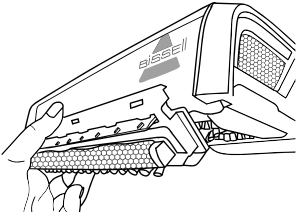


For more helpful tips and videos, check out BISSELL.com

Cleaning with the Bare Floor Tool

(select models only)

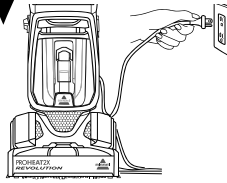
1



Turn off and unplug your machine. Attach the bare floor tool to the foot's bottom by lining the tool to the edge of the nozzle. Rotate down until it clicks into place.

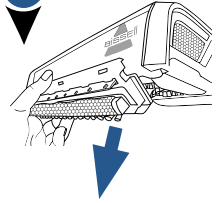
Follow filling instructions on page 8 using the Wash & Shine Hard Floor Cleaner formula and switch cleaning mode to Express Clean.

2



Plug into a properly earthed outlet and turn the machine on. Clean by pressing the spray trigger for 1 wet pass forward, 1 wet pass back, and then release the spray trigger and make 1 dry pass forward, 1 dry pass back.

3



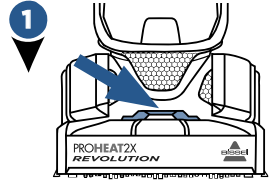
When finished, unplug the machine and remove the bare floor tool by rotating the tool up to unhook from the nozzle. Rinse and let dry before storing.

WARNING

WARNING: To reduce the risk of fire and electric shock when cleaning a hard floor, the BISSELL Bare Floor Tool must be used, and is only to be used with BISSELL Wash & Shine Hard Floor Cleaner formula intended for use with this appliance.

Cleaning with Hose and Tool

- Keep hair, loose clothing, fingers, and all parts of body away from openings and moving parts. Brushroll continues to rotate when in the upright position.
- Brushroll continues to turn while product is turned on and handle is in upright position. To avoid damage to carpet, rugs, furniture and flooring, avoid tipping cleaner or setting it on furniture, fringed area rugs, or carpeted stairs during tool use.
- With brushroll on, do not allow cleaner to sit in one location for an extended period of time, as damage to floor can result.

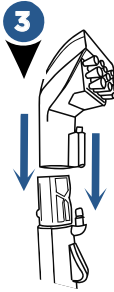


1 Turn the machine off and unplug from the earthed outlet. Lift accessory hose door on top of foot on the front of the machine. The door flips toward the machine to open.

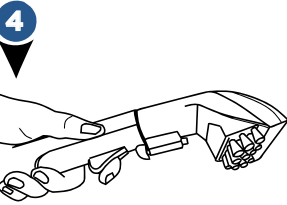


2 Insert the hose and snap into place. Be sure the coloured hose release clip is facing out, away from machine.

Important: Prime the hose by holding at ground level and pressing the spray trigger until solution starts to dispense out of the spray tip. Then, release the spray trigger and proceed to step 3.



3 Attach the tool to the end of the hose (tools may vary by model). Plug into a properly earthed outlet and press the power button to turn machine on.



4 Press the spray trigger button to spray the soiled area, then slowly move tool back and forth over the area.

Release the spray trigger to suck up the dirty solution. Work in small sections until the area is clean.

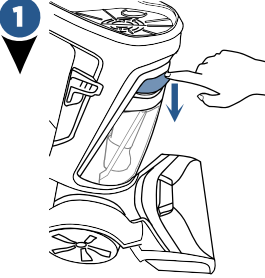
When finished cleaning, suction up warm clean water from a tap or bowl to rinse the inside of the hose and tool. Detach the hose and tool and close the accessory hose door. Let the hose and tool air dry before storing.

NOTE: If using a **Deep Reach Tool** (select models only), be sure the needles of the tool are pressed down into the carpet so the spray gets into the carpet fibres.

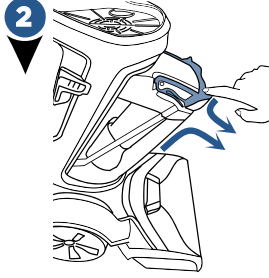
Empty Dirty Water Tank

WARNING

To reduce the risk of fire, electric shock or injury, turn power OFF and disconnect plug from electrical outlet before performing maintenance or troubleshooting.



To remove dirty water tank, press down on the coloured tank handle.



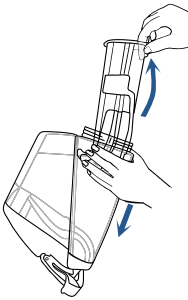
Tilt the tank slightly toward you. Grab the handle and tank with both hands.



Pull dirty water tank up and away to remove (continue to step 4).



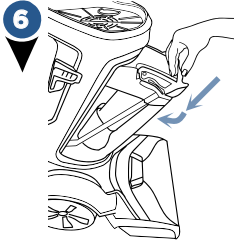
Quick Empty: Pull the rubber tab (located at the corner of the top of the tank) and tilt to pour. When closing the rubber tab, make sure all edges are sealed tight.



Final Rinse & Clean: Unscrew ring at bottom of tank by turning counterclockwise. Gently remove the float stack, rinse and clean. Once clean, return float stack into the tank by lining up the arrows to point at each other. With the arrows aligned, the float stack will lock into place. Return the ring and twist clockwise to lock. Water may leak if the ring is not fully tightened.



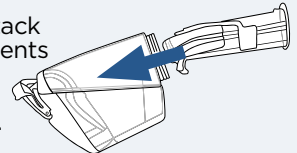
Clean the red filter below the dirty tank by wiping off any remaining dirt or debris.



Return Dirty Tank: Angle the tank and insert bottom first. Then tilt the tank toward the machine and push the top in until it clicks into place.

Did You Know?

The Float Stack is what prevents your dirty tank from overflowing.



Maintenance: Cleaning Machine After Use

WARNING

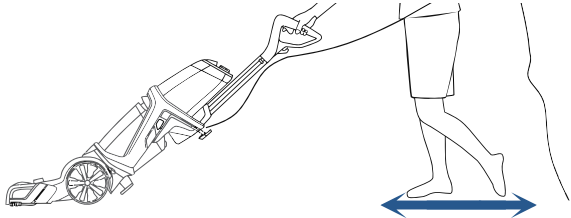
To reduce the risk of electric shock, turn power switch off and disconnect plug from electrical outlet before performing maintenance or troubleshooting checks.

1



First, fill the clean water tank with warm tap water and then empty it all to rinse. Then fill again with warm tap water and return the tank to the machine.

Twist cap back on tightly.



To flush and rinse machine:

Turn the machine on and press the spray trigger for 15 seconds while making back and forth passes on a section of carpet. Release the spray trigger and suck up the water.

See page 13 to clean the water that was just sucked up from the dirty tank.

Empty the clean water tank and let dry before storing.

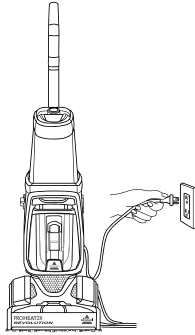
Wipe your machine's exterior with a soft cloth.

Maintenance: Cleaning the Nozzle

1

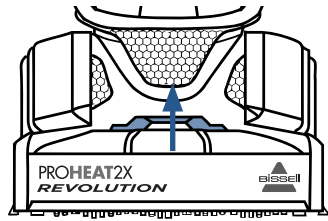
If pet hair or debris become clogged in the nozzle, it can be cleaned out of the nozzle with the nozzle clean out tool.

Turn off and unplug the machine from the earthed outlet.



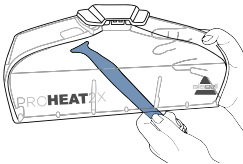
2

Remove the nozzle from the foot by flipping the accessory hose door open, then lifting the accessory hose door and nozzle up and away from the foot.



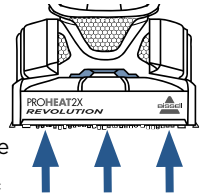
3

Hold the nozzle and insert the nozzle clean out tool into the thin slot on the bottom of the nozzle that touches the floor. Move the nozzle clean out tool up and down, back and forth to clean.



4

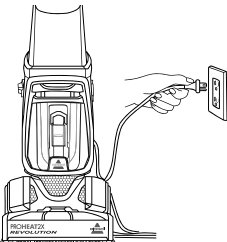
Return the nozzle back onto the foot of the machine by lining up the three hooks on the nozzle to the bottom of the foot (see arrows for location). Rotate the nozzle up and click into place. Close the accessory hose door.



Maintenance: Cleaning the Brush Rolls

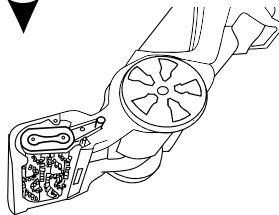
1

Turn off and unplug the machine from the earthed outlet.



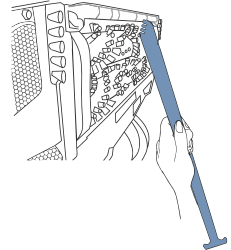
2

Lay the machine down on its back or side.



3

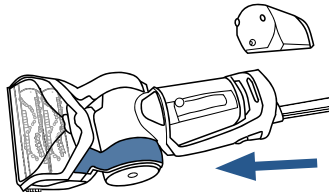
Use the comb to brush out the debris or hair from the brush rolls.



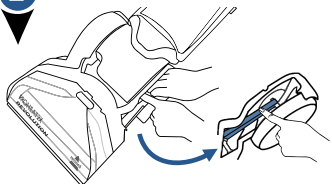
Maintenance: Replacing Small Belt, Large Belt, or Brush Rolls

What you will need: 1 Phillips screwdriver & 1 flathead screwdriver

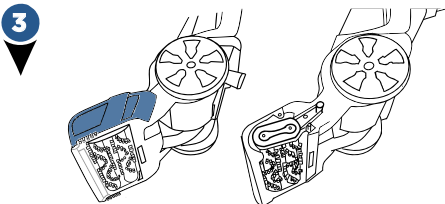
- 1** Unplug the machine. Remove both tanks from the machine. Press the recline pedal and lay the machine on its back. Use a flathead screwdriver to help lift and remove the Belt Access Door.



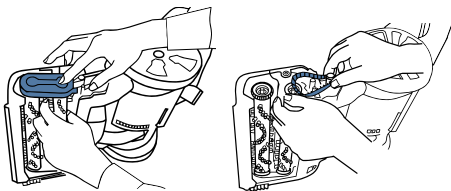
- 2** Here you should see one (1) belt. This is the Flat Pump Belt. If the Flat Pump Belt is broken, gently remove it from the machine. We will replace this belt in Step 5.



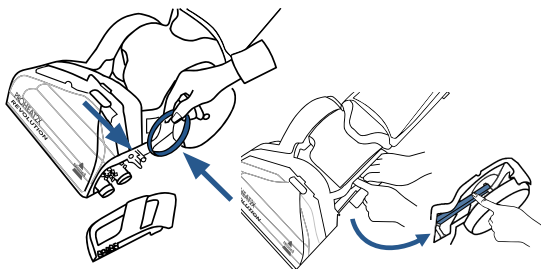
- 3** Turn the machine on its side. The Power Button should be facing up. Remove the 3 screws on the Belt/Brush Access Plate using a Phillips screwdriver. Remove the Access Plate to expose the Brush Cover and Cogged Large Pump Belt.



- 4** Remove the Brush Cover by lifting straight up. Remove the Cogged Large Pump Belt. The brush rolls can be replaced or cleaned at this time, if needed.

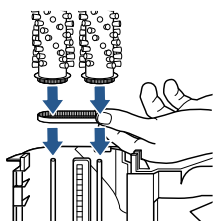


- 5** Now, if the Flat Pump Belt was broken, place a new Flat Pump Belt around the red area of the large pulley. Then use your thumb to stretch it toward the back of the machine and transfer it onto the metal axle.



Maintenance: Replacing Small Belt, Large Belt, or Brush Rolls (continued)

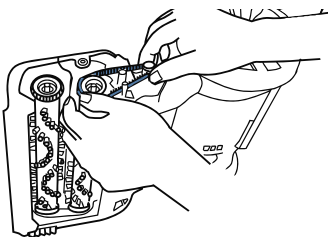
- 6** Spin either brush. If they both spin, continue to Step 7.



If only one spins, the opposite belt is broken and you must remove both brushes and replace the Small Cogged Brush Belt.

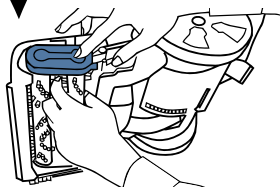
Place the new belt around both brush gears and slide them onto the thin metal axles.

7



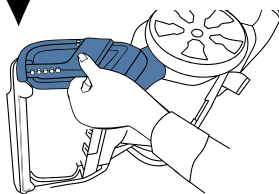
To replace the Cogged Large Pump Belt, make sure your Revolution is completely reclined. Begin by wrapping the Cogged Large Pump Belt around the small metal-toothed pulley. While wrapped around the pulley, stretch and wrap around the nearest brush gear.

8



Return the Brush Cover. Make sure that the brushes are aligned and the cover is secure.

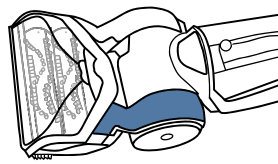
9



Return the Belt/Brush Access Plate to the end of the brush rolls by securing with the 3 screws.

10

Turn the machine to lay on its back.



Lastly, slide the Belt Access Door back into place. You should hear it "click" into place.

Troubleshooting

WARNING

To reduce the risk of electric shock, turn power switch off and disconnect plug from electrical outlet before performing maintenance or troubleshooting checks.

Problem	Possible causes	Remedies
Reduced spray OR no spray	Clean water tank may be empty	Refill tank
	Clean water tank may not be seated completely	Turn power OFF. Remove and reseal tank
	Pump may have lost prime in hose cleaning mode	Hold end of hose below water level in tank to prime
Loss of suction power	Tanks may not be seated properly	Pick up both tanks and reseal them so they fit properly on the unit
	Dirty tank has picked up maximum amount of dirty water and has reached full line	Empty dirty tank
	Clean water tank is empty	Check fluid levels in the clean water tank. Refill the tank if it is empty
	Rubber tab on dirty water tank is not sealed tight	Check the rubber tab on the dirty water tank and press firmly on all edges to secure it tightly (see step 4 on page 13 for detail)
	Accessory hose door may not be closed tightly in place	Check the accessory hose door and make sure it is closed tightly by pushing down to lock into place.
	Nozzle may be clogged from pet hair or debris	Use the nozzle clean out tool and follow steps on page 13 for "Cleaning Nozzle"

Consumer Guarantee

This Guarantee only applies outside of the USA and Canada. It is provided by BISSELL International Trading Company BV ("BISSELL").

This Guarantee is provided by BISSELL. It gives you specific rights. It is offered as an additional benefit to your rights under law. You also have other rights under law which may vary from country to country. You can find out about your legal rights and remedies by contacting your local consumer advice service. Nothing in this Guarantee will replace or lessen any of your legal rights or remedies. If you need additional instruction regarding this Guarantee or have questions regarding what it may cover, please contact BISSELL Consumer Care or contact your local distributor.

This Guarantee is given to the original purchaser of the product from new and is not transferable. You must be able to evidence the date of purchase in order to claim under this Guarantee.

Limited Two-Year Guarantee

Subject to the *EXCEPTIONS AND EXCLUSIONS identified below, BISSELL will for two years from the date of purchase by the original purchaser repair or replace (with new or remanufactured components or products), at BISSELL's option, free of charge, any defective or malfunctioning part or product. BISSELL recommends that the original packaging and evidence of the date of purchase be kept for the duration of the Guarantee period in case the need arises within the period to claim on the Guarantee. Keeping the original packaging will assist with any necessary re-packaging and transportation but is not a condition of the Guarantee.

If for your product is replaced by BISSELL under this Guarantee, the new item will benefit from the remainder of the term of this Guarantee (calculated from the date of the original purchase). The period of this Guarantee shall not be extended whether or not your product is repaired or replaced.

*EXCEPTIONS AND EXCLUSIONS FROM THE TERMS OF THE GUARANTEE

This Guarantee applies to products used for personal domestic use and not commercial or hire purposes. Consumable components such as filters, belts and mop pads, which must be replaced or serviced by the user from time to time, are not covered by this Guarantee.

This Guarantee does not apply to any defect arising from fair wear and tear. Damage or malfunction caused by the user or any third party whether as a result of accident, negligence, abuse, neglect, or any other use not in accordance with the User Guide is not covered by this Guarantee.

An unauthorised repair (or attempted repair) will void this Guarantee whether or not damage has been caused by that repair/attempt.

Removing or tampering with the Product Rating Label on the product or rendering it illegible will void this Guarantee.

SAVE AS SET OUT BELOW BISSELL AND ITS DISTRIBUTORS ARE NOT LIABLE FOR ANY LOSS OR DAMAGE THAT IS NOT FORESEEABLE OR FOR INCIDENTAL OR CONSEQUENTIAL DAMAGES OF ANY NATURE ASSOCIATED WITH THE USE OF THIS PRODUCT INCLUDING WITHOUT LIMITATION LOSS OF PROFIT, LOSS OF BUSINESS, BUSINESS INTERRUPTION, LOSS OF OPPORTUNITY, DISTRESS,

INCONVENIENCE OR DISAPPOINTMENT. SAVE AS SET OUT BELOW BISSELL'S LIABILITY WILL NOT EXCEED THE PURCHASE PRICE OF THE PRODUCT.

BISSELL DOES NOT EXCLUDE OR LIMIT IN ANY WAY ITS LIABILITY FOR (A) DEATH OR PERSONAL INJURY CAUSED BY OUR NEGLIGENCE OR THE NEGLIGENCE OF OUR EMPLOYEES, AGENTS OR SUBCONTRACTORS; (B) FRAUD OR FRAUDULENT MISREPRESENTATION; (C) OR FOR ANY OTHER MATTER WHICH CANNOT BE EXCLUDED OR LIMITED UNDER LAW.

FOR AUSTRALIAN CONSUMERS ONLY:

OUR GOODS COME WITH GUARANTEES THAT CANNOT BE EXCLUDED UNDER THE AUSTRALIAN CONSUMER LAW. YOU ARE ENTITLED TO A REPLACEMENT OR REFUND FOR A MAJOR FAILURE AND FOR COMPENSATION FOR ANY OTHER REASONABLY FORESEEABLE LOSS OR DAMAGE. YOU ARE ALSO ENTITLED TO HAVE THE GOODS REPAIRED OR REPLACED IF THE GOODS FAIL TO BE OF ACCEPTABLE QUALITY AND THE FAILURE DOES NOT AMOUNT TO A MAJOR FAILURE.

THIS GUARANTEE IS IN ADDITION TO OTHER RIGHTS OR REMEDIES UNDER LAW. NOTHING IN THIS GUARANTEE EXCLUDES, LIMITS OR MODIFIES ANY LIABILITY OF BISSELL WHICH IS IMPOSED BY LAW, OR LIMITS OR MODIFIES ANY REMEDY AVAILABLE TO THE CONSUMER WHICH IS GRANTED BY LAW. TO MAKE A CLAIM UNDER THIS GUARANTEE CONTACT BISSELL AUSTRALIA PTY LTD (DETAILS ABOVE). CONTACT BISSELL PRIOR TO RETURNING ANY GOODS. WHERE AGREED, BISSELL WILL REIMBURSE REASONABLE POSTAGE / HANDLING COSTS (IF ANY) FOR RETURNING GOODS TO BISSELL.

Consumer Care

If your BISSELL product should require service or to claim under our Limited Two-Year Guarantee, please contact us as follows:

Website:

www.BISSELL.com

Email:

Australia: consumeraus@bissell.com

New Zealand: consumernz@bissell.com

Write:

BISSELL AUSTRALIA PTY LIMITED
42 Rocco Dr.
Scoresby 3179
Victoria, Australia

Telephone:

Australia: 1300-247-735

New Zealand: 0800-247-735

Replacement parts and accessories are available for purchase. To purchase visit www.BISSELL.com

Visit the BISSELL website: www.BISSELL.com

When contacting BISSELL, have model number of cleaner available.

Please record your Model Number: _____ Please record your Purchase Date: _____

NOTE: Please keep your original sales receipt. It provides proof of the date of purchase in the event of a Guarantee claim. See Guarantee for details.



©2016 BISSELL Homecare, Inc.
Grand Rapids, Michigan
All rights reserved. Printed in China
Part Number 160-8312 Rev 03/16 RevC
Visit our website at: www.BISSELL.com
Scotchgard™ is a trademark of 3M

Febzebre & Ambipur are trademarks of The Procter & Gamble Company, Cincinnati, Ohio used under license by BISSELL Homecare Inc.