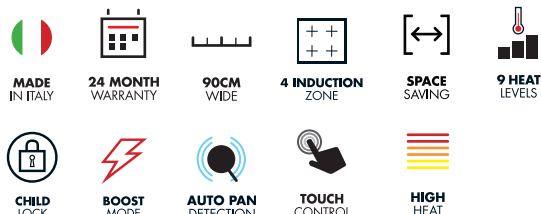


90CM INDUCTION COOKTOP WITH INTEGRATED DOWNDRAFT HOOD

INDD94



Using decades of experience in manufacturing range hoods meets our innovative induction cooktop technology.

Functionality

Designed with a closing flap, that, when in operation allows for optimum efficiency and when closed, stops anything accidentally falling inside and also prevents odours from escaping.

High-quality materials

The flap's outer surface is made from the same glass as the hob, creating a seamless look. All internal ducting components are made from stainless steel.

Easy cleaning

The grease filter and the steel drip pan designed to catch grease and liquids can be lifted out even with the flap in place. The glass flap can also be removed completely to make it easier to clean inside.

Safety

All liquids, including condensation, are collected in an internal tray complete with drain valve. An electronic sensor warns when the tray is full and, for safety reasons, stops motor operation until it has been emptied.

Thoughtful motor location

The motor is located in the plinth, away from the user, making it quieter and easier for the induction top to be serviced without having to remove the hob from the bench top.

Adaptability and design freedom

The product can be installed in any base unit measuring at least 90cm wide and 60cm deep. It is telescopic in both height and depth and, for deeper base units, the motor can easily be rotated and located at the back.

Induction hob installation

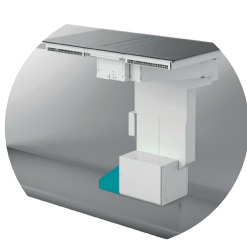
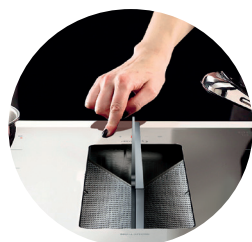
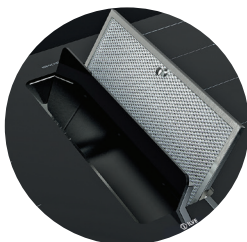
The induction cooktop can be installed in a non-flush or flush position.

Bridge zones

With this function you can to manage two larger areas of equal size. The two zones are activated at the same time and controlled simultaneously.

Residual heat indicator

The appliance is equipped with the residual heat indicator. The cooking zone does not heat up directly, but through the return heat transmitted by the pan. After switching off the zone, the display shows a 'H' illuminated and, as long as it is active, you can use it to heat up or defrost food.



Standard Option - Cooktop Colour



Black Glass

90CM INDUCTION COOKTOP WITH INTEGRATED DOWNDRAFT HOOD

INDD94



Pause function and recall

By touching a key both the heating and the timer are locked, by touching the same key the initial conditions are restored.

Pots detector

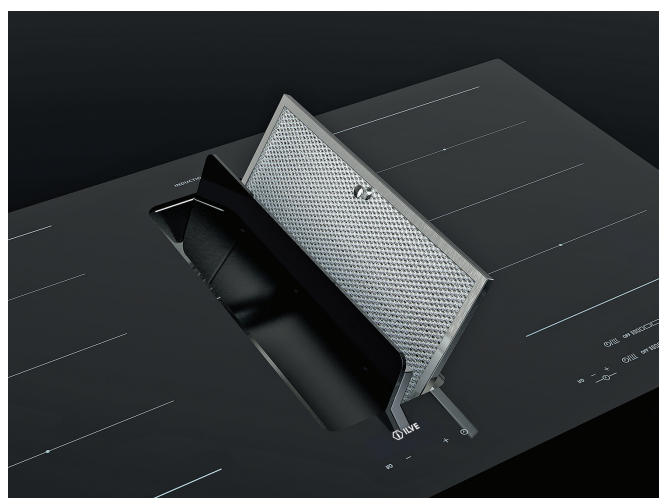
If there are no pots on the cooking zone, when the appliance is switched on heat will not be activated. If, in 10 minutes time, you place the pan on the cooking zone, the zone will detect it and switches on to the set level. When you remove the pan from the cooking area, the power supply stops. If you place a pot with a smaller diameter on the cooking zone, the zone will use only the energy needed to heat it.

Boost Mode

Using this mode will speed up the heating process for fast cooking. Thanks to the additional power, even large quantities of food can be heated quickly. After activation, the additional power is active for 10 minutes, then it automatically switches to cooking level 9.

Fast automatic heating

This function preheats the zone at maximum temperature in order to quickly bring it to the desired temperature. After a defined time, the cooking level will return to the previously set level.



90CM INDUCTION COOKTOP WITH INTEGRATED DOWNDRAFT HOOD

INDD94

INDD94 90CM INDUCTION COOKTOP & HOOD

FINISH

- Black ceramic glass

FEATURES

- Touch control operation
- 9 power levels
- Pause & Recall mode
- Keep warm option
- Automatic pot detection
- Fast automatic heating will reach cooking temperature quicker
- Minute minder: facilitates a timer to alert cooking time and over cooking
- Open & Close hood flap made from black glass
- Easy removable catchment tray
- Creative motor design allows for multiple installation types without the compromise of kitchen space

SAFETY

- Child safety lock
- Overheat safety switch off & Operating time limiter
- Automatic pan detection
- Residual heat indicator (H)

CLEANING & ACCESSORIES

- Easy clean surface

ZONES

- 4 cooking zones
- Boost mode
- Zone bridging option
- 2 x large rectangle zones
- Power: 1500W - 200W

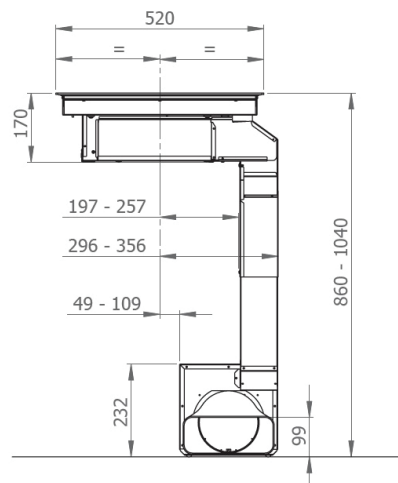
HOOD ASPIRATION SYSTEM

- Maximum airflow (IEC 61591) 684 m3/h
- Pressure (Pa): 560
- Motor Power (W): 275
- Noise level at maximum speed db(A): 68
- Touch controls
- Delayed switch off timer
- Filter replacement alarm
- Filter cleaning reminder
- Optional Plasma filter model is available*
- Charcoal Filter kit is available from ILVE. Code: E005KMP010301

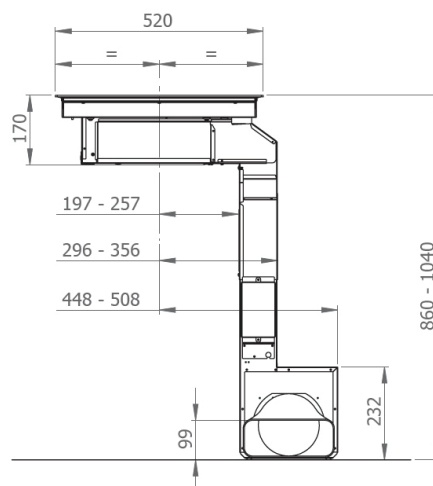
POWER CONSUMPTION

- Power requirement: Hard Wired
- Total electrical load: 7.2kW

Front motor



Rear motor



NB: drawings are not to scale — they are to be used as a guide only



Cooktop

EAN code: INDD94

Product Size: 860W x 520D x 8460-1040H

Cutout Size: (benchtop): 840W X 500D

FOLLOW US:



/ilve_appliances/



/ILVEappliances



/ILVE_appliances



/ILVEappliances

Australia National Telephone Number 1300 MYILVE (694 583) New Zealand Telephone Number 0508 458 369
ILVE showrooms are open daily from 9am-5pm and Saturdays 10am-4pm

Page 3/4
03082021

ilve.com.au

NSW & ACT (Head Office)

48-50 Moore Street
Leichhardt
F 02 8569 4699

QLD

1/42 Cavendish Road
Coorparoo
F 07 3397 0850

WA & NT

Unit 10/55 Howe Street
Osborne Park
F 08 9201 9188

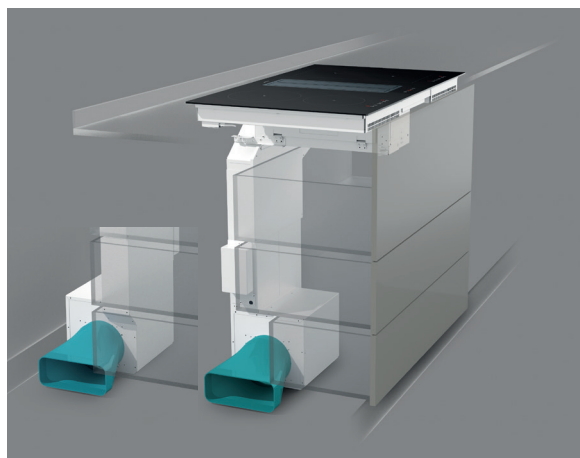
New Zealand

PO Box 11.160
Sockburn Christchurch
F 03 344 5906

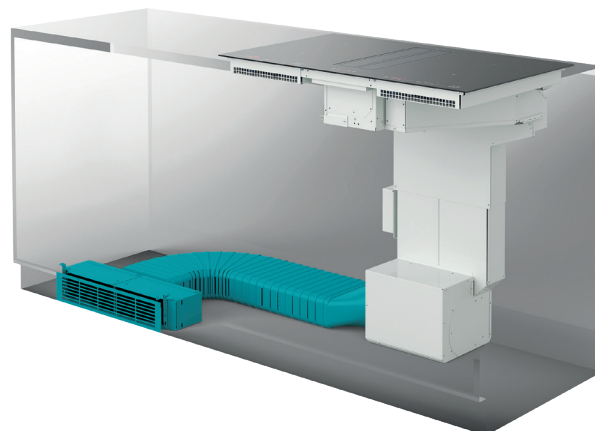
DISCLAIMER
Eurolinx PTY LTD, trading as ILVE Appliances, is continually seeking ways to improve the design specifications, aesthetics and production techniques of its products. As a result alterations to our products and designs take place continually. Whilst every effort is made to produce information and literature that is up to date, this brochure should not be regarded as an infallible guide to the current specifications, nor does it constitute an offer for the sale of any particular product. Product dimensions indicated in our literature is indicative only. Actual product only should be used to define dimension cutouts. Distributors, and retailers are not agents of ILVE Appliances and are not authorized to bind ILVE Appliances by any express or implied undertaking or representation.

90CM INDUCTION COOKTOP WITH INTEGRATED DOWNDRAFT HOOD

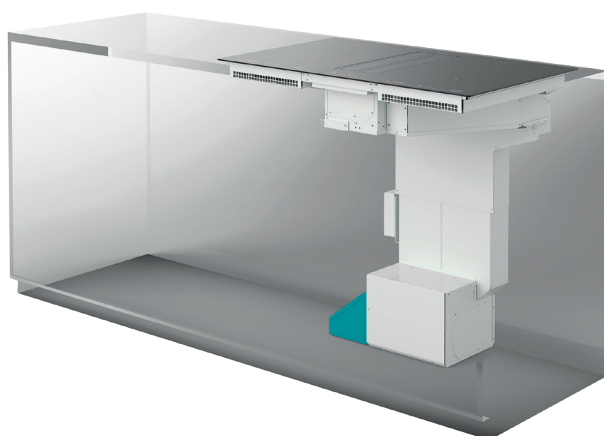
INDD94



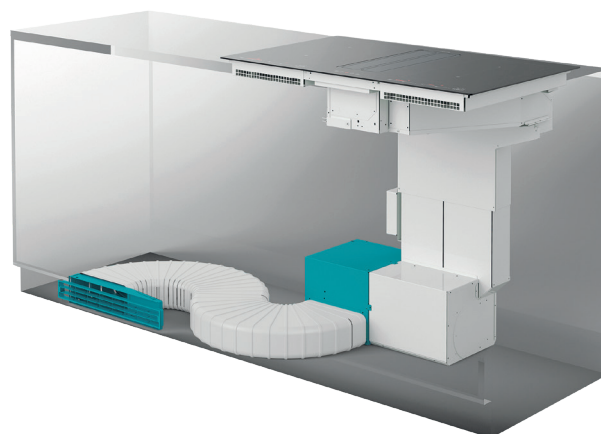
Pictured: with front & rear location motor



Pictured: ducted version



Pictured: in-recirculated mode



Pictured: ducted with plasma filter



For installation specifications, please consult with ILVE. For optimum installation, we recommend using the actual product as the best guide.

Filtering mode

Turning into filtering mode is very easy and affordable. A regenerable active charcoal filter kit is available and can be inserted into the base

FOLLOW US:



/ilve_appliances/



/ILVEappliances



/ILVE_appliances



/ILVEappliances

Page 4/4
03082021

Australia National Telephone Number 1300 MYILVE (694 583) New Zealand Telephone Number 0508 458 369
ILVE showrooms are open daily from 9am-5pm and Saturdays 10am-4pm

ilve.com.au

NSW & ACT (Head Office)

48-50 Moore Street
Leichhardt
F 02 8569 4699

QLD

1/42 Cavendish Road
Coorparoo
F 07 3397 0850

WA & NT

Unit 10/55 Howe Street
Osborne Park
F 08 9201 9188

New Zealand

PO Box 11.160
Sockburn Christchurch
F 03 344 5906

DISCLAIMER

Eurolinx PTY LTD, trading as ILVE Appliances, is continually seeking ways to improve the design specifications, aesthetics and production techniques of its products. As a result alterations to our products and designs take place continually. Whilst every effort is made to produce information and literature that is up to date, this brochure should not be regarded as an infallible guide to the current specifications, nor does it constitute an offer for the sale of any particular product. Product dimensions indicated in our literature is indicative only. Actual product only should be used to define dimension cutouts. Distributors, and retailers are not agents of ILVE Appliances and are not authorized to bind ILVE Appliances by any express or implied undertaking or representation.