



Key Features

- 1 Slim Fit design for standard Australian kitchens.²
- 2 Twin Cooling Plus™ independent cooling.
- 3 Fresh Zone Crisper helps keep fruit & vegetables fresh.
- 4 Anti-Fingerprint Finish helps keep things clean.
- 5 Compact and stylish front LED display.
- 6 Power Cool / Power Freeze for quick drinks & ice.
- 7 Convenient Movable Twist Ice Maker.

Fits in and stands out.

Sized for Australian Kitchens²

- 1 Slim Fit design for a standard 1800mm high / 900mm wide cavity, common in many Australian kitchens.²

Lock in freshness. Kick out odours.

Twin Cooling Plus™

- 2 Our Twin Cooling Plus™ technology cools your refrigerator and freezer separately, to help maintain temperature and optimal humidity and help minimise the mixing of odours.¹

Lock in the CRUNCH!

Fresh Zone Crisper

- 3 The tight sealing structure of the Fresh Zone drawer helps to maintain optimal humidity, to preserve the freshness, flavour and CRUNCH! of fruit and vegetables.

Helping hand to keep things clean.

Anti-Fingerprint Finish

- 4 Helps discourage fingerprints on the external surfaces of the fridge, to keep things in tip top shape.

Designed to impress

Flat Door and Front LED Display

- 5 Easy access to every function with simple to use controls to monitor the status of the refrigerator with clear performance information. And, being flush with the surface of the strikingly beautiful flat doors, it gives the exterior design a seamlessly elegant and modern, high-tech look.

Fast, cold, blast.**Power Cool / Power Freeze**

6

Power Cool blows intensely cold air into the fridge, so foods and drinks are chilled quickly. And Power Freeze delivers a fast blast of cold air into the freezer. It's great for freezing or firming up frozen food, like ice cream, and making more ice.

Ice cubes in a flick**Movable Twist Ice Maker**

7

Always have plenty of ice to stay cool when the weather is warm. With the Movable Ice Maker a simple twist is all it takes to dispense a large quantity of ice cubes. Then when the seasons change and there's not much need for ice, you can easily detach and remove it, for when it's time to stock up on winter essentials.

See it all**LED Lighting**

8

Find ingredients easily, while saving space with high-efficiency, long-lasting LED lighting.

Frost freedom**No Frost**

9

No Frost technology uses multiple vents to enhance the air flow. It helps prevent the formation of water droplets and frost inside the compartments and stops the buildup of ice on the freezer walls and evaporator. It is also designed to maintain a constant optimal temperature in every corner by enhancing the air circulation.

The quiet achiever**Digital Inverter Technology**

10

Enjoy energy efficiency and long-lasting performance. The Digital Inverter Compressor intelligently adjusts operating speed in response to cooling demand and is backed by a 10 year limited parts warranty* to give you peace of mind.¹¹

¹ Based on testing comparing Samsung Twin Cooling Plus with Samsung All Around / Mono Cooling Systems.² Fits a standard 1800mm high / 900mm wide cavity. Please review full fridge dimensions to determine suitability.¹¹ See Warranty card or visit www.samsung.com.au/support for full details

488L FDR 4 Door, Stainless Steel

Short Code			SRF5500S
Representative Model Code			RF48A4000M9/SA
EAN/Barcode			FDR
Cooling Feature	No Frost		No Frost
	Cooling system		Twin Cooling Plus™
	Number of evaporators		2
Physical Specification	Gross (AU Gross)	Total	488L
		Refrigerator	329L
		Freezer	159L
	Dimension	Net Width	833mm
		Net Case Height with Hinge	1793mm
		Net Case Height without Hinge	1775mm
		Net Depth with Door Handle (Bar)	N/A - Recessed Handle
		Net Depth w/out Door Handle (Recess)	740mm
		Net Depth without Door	650mm
	Packing Dimension	Packing Width	890mm
		Packing Height	1875mm
		Packing Depth	795mm
	Weight	Net	99kg
		With Package	109kg
Exterior Feature	Water	Water Dispenser	NA
		Dispenser Location	NA
		Dispenser Type	NA
		Auto-Fill Jug	No
	Display&Control		Yes - External
	Handle		Recess
	Handle Deco		-
	Handle Hygiene (Anti Bacterial)		NA
	Door Color		Stainless Steel
	Anti-Fingerprint		Yes
Refrigerator	Drawer	Humidity Control	No
		Number of Fridge Box	2
		Box Color	Transparent
	Number of Shelves	Number of Shelves	3
		Shelf Material	Tempered Glass
		Foldable Shelf	No
		Slide In Shelf	No
		Wine Rack	No
	Door Guard	Guard Color	Transparent
		Number of Guards	6
		Egg Container	Yes
	Metal Cooling Plate		No
	Fridge Precise Temp Control		No
	Power Cool		Yes
	LED Lighting	Top	Yes
		Side	No
		Back Side	No
Freezer	Ice	Ice Maker Type	Movable Twist Ice Maker
		Ice Maker Water Source	Manual Refill
		Ice Location	Freezer
		Ice Type	Cubed
	Freezer Storage	Number of Shelves	4
		Shelf Material	Tempered Glass
		Number of Drawers	2
		Power Freeze Function	Yes
Other Features	Compressor		Digital Inverter Compressor
	Door Alarm		Yes
	Vacation Mode		Yes
	Deodoriser		Yes
	Energy Rating		3 Star
Accessories	Filter	Model Number	N/A
Warranty	Manufacturers Warranty Period		24 months
	Compressor Warranty		10 years

Customer Service

We're
here
to
help



Online Chat, Email or Phone support;

[Chat Support](#)

[Service Email](#)

Call 1300 362 603

8am-8pm / 7 days a week

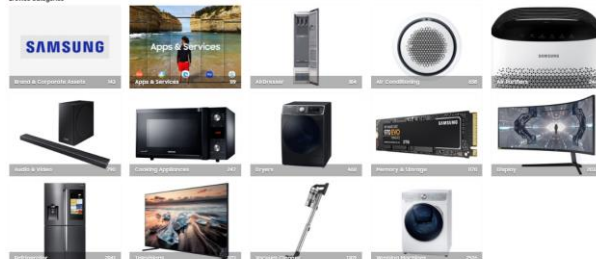
Resource Centre

Welcome to the Samsung Resource Centre

If you are a partner or OEM customer and require access

[Brand Outlines](#) [Upload Files](#) [My Lightbox](#) [Request Access](#) [Support](#)

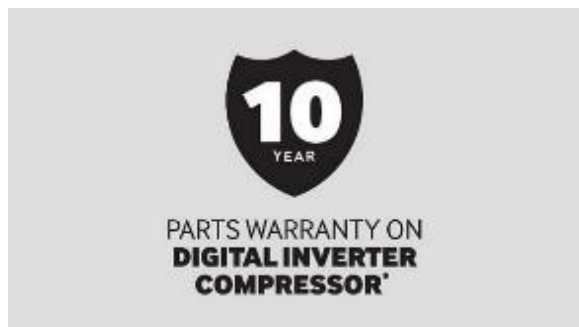
Browse Categories



Product Imagery and Assets Available from
Samsung Resource Centre

samsung-resources.com.au/asset-bank/action/viewHome

Peace of Mind



We offer a 10 year parts warranty on the digital inverter compressor* that powers this refrigerator.

* See Warranty card or visit

samsung.com/au/support/warranty/

for full details.

Your Benefits



From home support on demand, 24/7 chat support and extended home repair hours, Samsung Care helps you and your refrigerator stay cool.

STANDARD BENEFITS



Home Support On Demand*

Within 24 hours, or on a day that suits you (Mon-Sat)

*24/7 support. Selected products only. [Go to Samsung.com](#)



Instant Response

24/7 Call Centre and Live Chat support



Extended Home Repair Hours*

Mon-Fri 7am-8pm
Sat 9am-5pm

*24/7 support. Selected products only. [Go to Samsung.com](#)