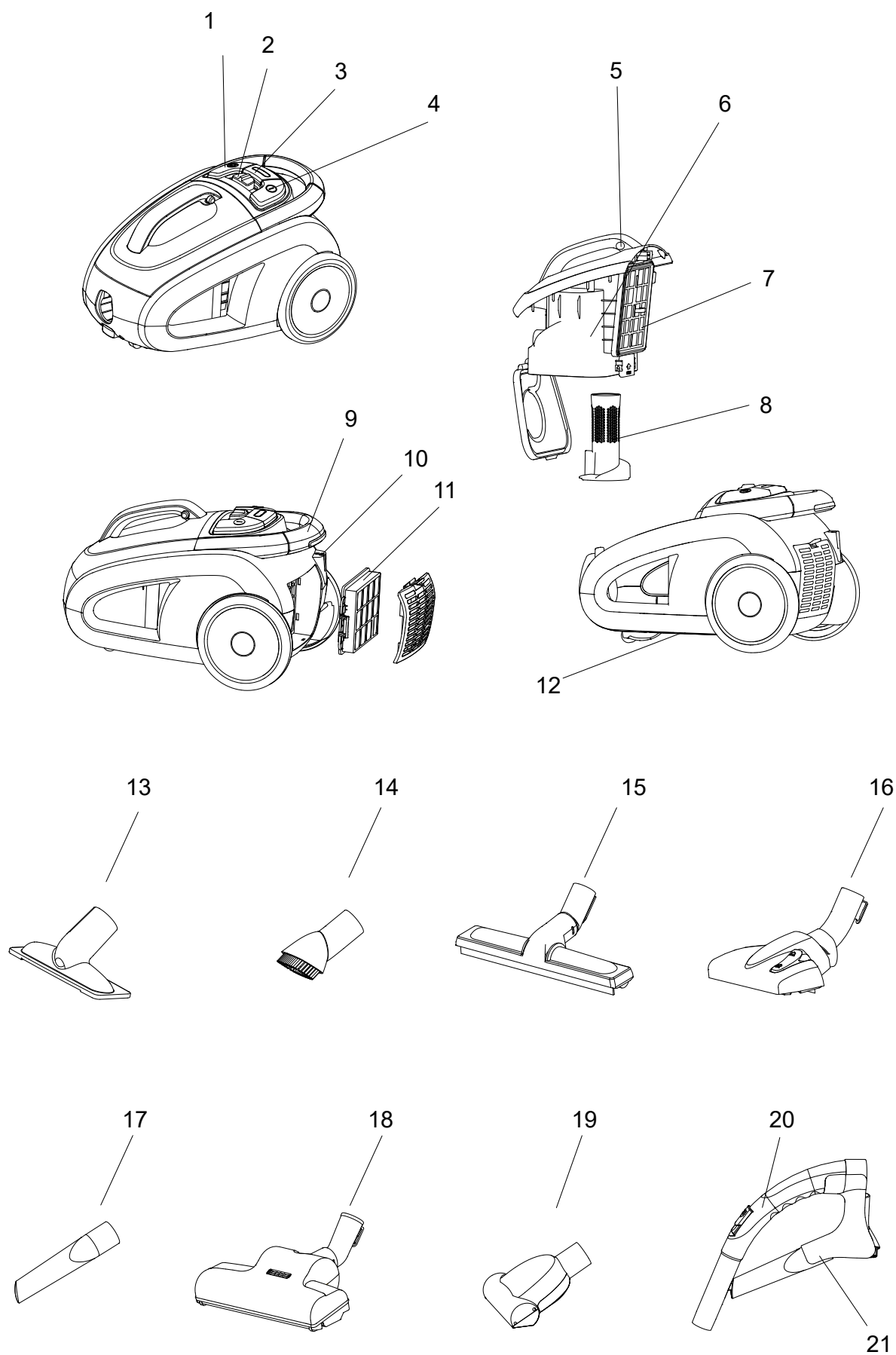


Meteor

Instructions for use



Meteor



The different models of the vacuum cleaners can include different nozzles

Dear Nilfisk customer

Congratulations on the purchase of your new Nilfisk Meteor vacuum cleaner.

Prior to using the appliance for the first time, be sure to read the document through and keep it ready to hand.

Index

1. Overview	1
2. Safety instructions	1
3. Instruction for use.....	1
4. Cleaning tips.....	4
5. Trouble-shooting.....	5
6. Service and maintenance.....	5
7. Guarantee and service	5
8. WHEELIE symbol information	6

1. Overview (ref. page 2)

- 1 Cable rewinder
- 2 Power level
- 3 Dust bag indicator
- 4 On/off switch
- 5 Open/close button, dust container
- 6 Dust container
- 7 EPA filter
- 8 Cyclone filter
- 9 Handle
- 10 Parking groove for tube and nozzle
- 11 Exhaust filter
- 12 Rating plate
- 13 Upholstery nozzle
- 14 Round brush
- 15 Hard floor nozzle (not standard)
- 16 Combination nozzle
- 17 Crevice nozzle
- 18 Turbo nozzle (not standard)
- 19 Mini turbo nozzle (not standard)
- 20 Bent end
- 21 Accessory storage

2. Safety instructions



- Do not use the machine without filters properly fitted.
- This machine is not intended for the suction of hazardous materials or gas, doing so may expose people to serious health risks.
- The machine must not be used for the suction of water or other liquids.
- Do not pick up sharp objects such as needles

or pieces of glass.

- Do not pick up anything that is burning or smoking such as cigarettes, matches or hot ashes.
- Use and store this machine indoors and in a dry environment, 0 °C to 60 °C.
- Do not use the machine outdoors.
- Do not handle the machine with wet hands.
- Turn off the machine before unplugging.
- To unplug, grasp the plug, not by pulling on the cable. Do not carry or pull the machine by the cable.
- The machine must not be used if the cable shows any sign of damage. Regularly inspect the cable for damage, in particular if it has been crushed, shut in a door or run over.
- Do not use the machine if it appears faulty. Have the machine inspected by an authorized service center if the machine has been dropped, damaged, left outdoors or has been exposed to water.
- No changes or modifications to the mechanical or electrical safety devices should be made.
- All repairs must be carried out by an authorized service center.
- Use only original filters and original accessories from your local dealer. Use of unauthorized filters will void the warranty.
- Turn off the machine and unplug before starting dust container emptying or filter change, grasp the plug, do not pull at the cable.
- Do not use the machine as a toy. Do not leave children with the machine without supervision.
- This appliance is not to be used by children or persons with reduced physical, sensory or mental capabilities, or lack of experience and knowledge, unless they have been given supervision or instruction. Children must be supervised to make sure they do not play with the appliance.
- If the supply cable is damaged, it must be replaced by the manufacturer or its service agent or similar qualified person in order to avoid a hazard.

3. Instructions for Use

Before using the machine make sure that the voltage shown on the rating plate underneath the machine corresponds with the mains voltage.

3.1 Start and Stop

3.1.1 Start

Pull out the electric cable and plug the machine to a wall socket.

Press on/off button and adjust power level.

3.1.2 Stop

Turn off the machine and unplug. Unplug by

Meteor

grasping the plug, not by pulling at the cable.
Activate the cable rewinder.

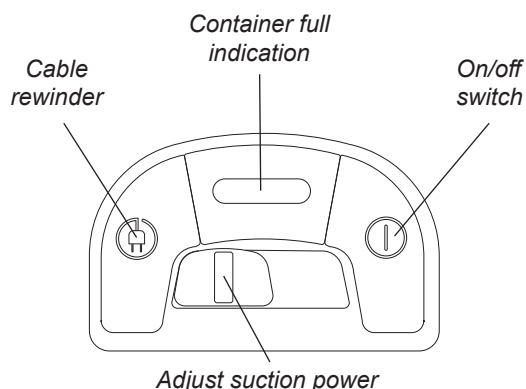
3.2 Connecting hose, tube and nozzles

1. Insert the hose connector into the suction inlet.
2. Connect the bent tube to the tube.
3. Connect the tube to the nozzle.
4. The tube is telescopic and can be adjusted to your height. Push the adjusting button to extend the tube and pull back to shorten to desired length.

Container full indication

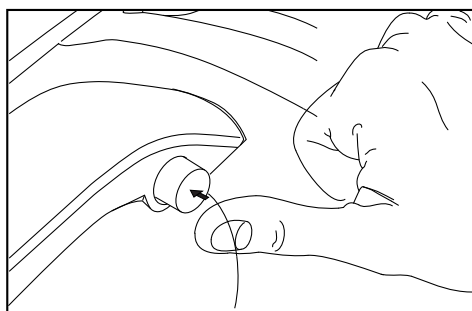
On the control panel a lamp is placed, where you will receive notification, when the container is full or the suction is degraded otherwise.

The dust container must be emptied if the lamp is constantly on when the machine is operating at maximum power and the nozzle is raised from the floor.



3.3 Releasing and emptying of dust container

The dust container can be separated from the machine for emptying. Simply release the dust container from the machine by pressing the buttons on the dust container handle (see illustration below) and pull the dust container upwards. The dust container can now be emptied in a dustbin, by pressing the lever marked **"Push"**.



3.4 Cleaning the cyclone filter

The cyclone filter should be cleaned regularly

to maintain suction. You will have access to the cyclone filter when you have released the dust container. If necessary, use lukewarm water. Make sure to let the filter dry before putting it back into the vacuum cleaner.

3.5 Changing the exhaust filter

Open the cover for the exhaust filter, as seen in the overview image (page 2), replace the filter with a new one and close the cover again.

3.6 Washing/exchanging the EPA filter

You will have access to the EPA filter when you have released the dust container.

Rinse the inside of the filter using lukewarm tap water. Do not use any cleaning agents and avoid touching the filter surface. Tap the filter to remove the excess water. Make sure to let the filter dry before putting it back into the vacuum cleaner.

If necessary, exchange the filter.

Please note that the machine will not function without a EPA filter.

3.7 Parking the tube and nozzle

There are two grooves for parking. One located on the underside to use when machine stands on the back, and the other on the back to use when the machine is standing on the wheels.

3.8 Thermal fuse

The machine is fitted with a thermal fuse, which prevents the machine from overheating. If the thermal fuse blows, the machine automatically switches off the motor and must cool before it can be started again.

Restart

1. Turn off the machine and unplug from the wall socket.
2. Make sure that nothing blocks the air flow through the bent tube, hose, tube, nozzle or filters.
3. Let the machine cool.
4. Plug in the machine again and push the start button. The machine will not start until cool enough. If the machine does not start turn it off and unplug. Try again in a while.

4. Cleaning tips

Adjust the suction power by means of the power regulation or the sliding valve on the bent tube.

Upholstery nozzle (13)

Use the upholstery nozzle for upholstered furniture.

Brush nozzle (14)

Use the brush nozzle for curtains and window sills.

Hard floor nozzle (15)

Use the nozzle for hard floors.

Combination nozzle (16)

Adjust the combination nozzle depending on type of floor.

Crevice nozzle (17)

Use the crevice nozzle for narrow spaces.

Turbo nozzle (18)

Use the turbo nozzle for efficient carpet cleaning.

Mini turbo nozzle (19)

Use the mini turbo nozzle to remove pet hairs and similar from upholstery and furniture

The models can include different nozzles.

5. Trouble-shooting

Repair or service of electrical components such as cable or motor, must only be carried out by an authorized service center.

If the machine does not start	Check that the plug is correctly fitted to the wall socket.
	A fuse in the building may have blown and needs to be changed.
	The cable or plug may be damaged and must be repaired by an authorized service center.
Reduced suction power	The dust container may be full and needs to be emptied, see instructions.
	The EPA filter may be blocked and has to be washed/exchanged, see instructions.
	The bent tube, hose, tube or nozzle may be blocked and needs to be cleaned.
If the machine stops	The thermal fuse may have blown, see instructions.

6. Service and Maintenance

- Store the machine indoors and in a dry environment.
- Clean the machine surface with a dry cloth or a damp cloth with a little cleaning agent.
- Order original accessories from a local dealer.
- Service – contact your local dealer.

7. Guarantee and Service

Our goods come with guarantees that cannot be excluded under the Australian Consumer Law. You are entitled to a replacement or refund for a major failure and for compensation for any other reasonably foreseeable loss or damage. You are also entitled to have the goods repaired or replaced if the goods fail to be of acceptable quality and the failure does not amount to a major failure.

Nilfisk vacuum cleaners for domestic use are warranted for 2 years from the date of purchase by:

Nilfisk Pty Ltd
1/13 Bessemer Street
Blacktown NSW 2148
tel: 1300 556 710
info.au@nilfisk.com

The warranty covers the motor, cable rewinder, switch and casing. The nozzles, filters, hoses, tubes and other accessories are covered twelve months due to manufacturing fault only and the guarantee excludes wear and tear.

The guarantee includes spare parts and labour costs, and covers manufacturing and material defects that may occur during normal domestic use.

Service under the guarantee will only be performed if it can be proven that the defect occurred within the product's guarantee period (a correctly completed guarantee certificate or printed/stamped cash register receipt with date and product type) and on the condition that the vacuum cleaner was bought as a new product in Australia/New Zealand and distributed by Nilfisk. Equipment defects covered by this warranty will be repaired or replaced by one of the service centres of the Nilfisk organisation. Find your local service agent here: <http://www.nilfisk.com.au>.

Packing and postage/carriage is not covered by the warranty. Upon completion of any repairs necessary, the vacuum cleaner will be returned to the customer at the risk and expense of Nilfisk.

Meteor

The benefits under this warranty are in addition to your national law of sale.

The guarantee does not cover:

- Normal wear and tear of accessories and filters.
- Defects or damage occurring as a direct or indirect result of incorrect use - such as the vacuuming of rubble, hot ashes or carpet deodorant powder.
- Abuse, loss or lack of maintenance as described in Instructions for use.
- If the machine has been used for home renovations.
- If the machine has been used for suction of water, plaster dust or sawdust.

Nor will it cover incorrect or poor configuration, i.e. setting up or connection, nor fire-damage, fire, lightning strike or unusual voltage fluctuations or any other electrical disturbances such as defective fuses or defective electrical installations on the supply grid, and defects or damage in general that Nilfisk consider to be the result of causes other than manufacturing and material defects.

The guarantee becomes void:

- If a defect is caused by the use of non-original Nilfisk filters.
- If the identity number is removed from the vacuum cleaner.
- If the vacuum cleaner has been repaired by a non-Nilfisk authorized dealer.
- If the machine is used in a commercial environment, i.e. building contractors, cleaning contractors, professional trades or any other non-domestic usage.

The guarantee is valid in:

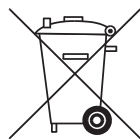
Australia Customer Care helpline:
Telephone: 1300 733 171

New Zealand
FreePhone: 0800 40 80 80

Responsibility

Nilfisk disclaim all responsibility for all damage caused by incorrect use or modification of the machine.

8. WHEELIE Symbol Information



This symbol on the product or on its packing indicates that this product may not be treated as household waste. Instead it shall be handed over to the applicable collection point for the recycling of electrical and electronic equipment. By ensuring this product is disposed of correctly, you will help prevent potential negative consequences for the environment and human health, which could otherwise be caused by inappropriate waste handling of this product. For more detailed information about recycling of this product, please contact your local city office, your household waste disposal service or the shop where you purchased the product.

Nilfisk A/S
Kornmarksvej 1
DK - 2605 Broendby
tel.: (+45) 4323 8100

 **Nilfisk**[®]
www.nilfisk.com