

Installation instructions

DishDrawer®

DD60ST models

Fisher & Paykel
innovative living

NZ AU GB IE

Important!

SAVE THESE INSTRUCTIONS

The models shown in this document may not be available in all markets and are subject to change at any time. For current details about model and specification availability in your country, please visit our local website listed at the end of this document or contact your local Fisher & Paykel dealer.

① SAFETY AND WARNINGS

⚠ WARNING!

Electrical shock hazard

Before installing the DishDrawer®, remove the house fuse or open the circuit breaker.

This appliance must be earthed. In the event of a malfunction or breakdown, earthing will reduce the risk of electric shock by providing a path of least resistance for electric current. This appliance is equipped with a cord having an equipment-earth conductor and an earthing plug. The plug must be plugged into an appropriate outlet that is installed and earthed in accordance with all local codes and ordinances. **WARNING-** Improper connection of the equipment-earth conductor can result in a risk of electric shock. Check with a qualified electrician or service representative if you are in doubt as to whether the appliance is properly earthed.

Do not modify the power supply plug provided with the appliance - if it will not fit the outlet, have a proper outlet installed by a qualified electrician. Do not use an extension cord, adapter plug or multiple outlet box.

Failure to follow this advice may result in electrical shock or death.



⚠ WARNING!

Cut hazard

Take care - panel edges are sharp.

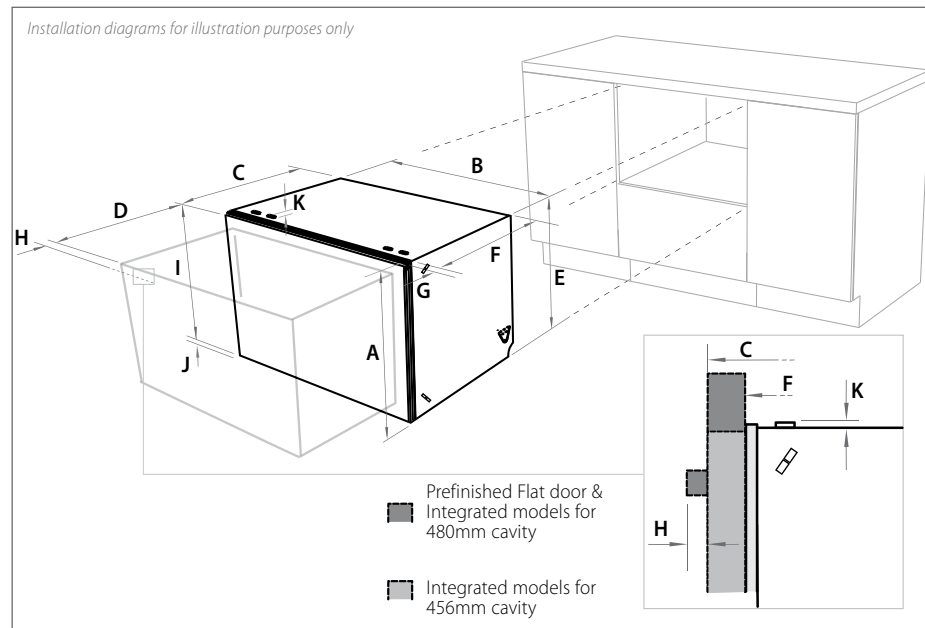
Failure to use caution could result in injury or cuts.



Important safety instructions!

- Installation of this DishDrawer® requires basic mechanical and electrical skills.
- Be sure to leave these Instructions with the Customer.
- Installation must comply with your local building and electricity regulations.
- At the completion of the DishDrawer® installation, the Installer must perform the Final Checklist.
- Remove all packaging materials supplied with the DishDrawer®.
- This DishDrawer® is manufactured for indoor use only.
- Ensure all water connections are turned OFF. It is the responsibility of the plumber and electrician to ensure that each installation complies with all Codes and Regulations.
- The DishDrawer® **MUST** be installed to allow for future removal from the enclosure if service is required.
- The switched power outlet must be outside the DishDrawer® cavity, so that it is accessible after installation.
- Care should be taken when the appliance is installed or removed to reduce the likelihood of damage to the power supply cord.
- If the DishDrawer® is to be relocated from one installation to another it must be kept upright to avoid damage from water spillage.
- Make sure only new hoses are used for connection (supplied with DishDrawer®). Old hoses should not be reused.
- Failure to install the DishDrawer® correctly could invalidate any warranty or liability claims.
- If the product is installed in a motor vehicle, boat or similar mobile facility, you must bring the vehicle, boat or mobile facility containing the product to the service shop at your expense or pay the service technician's travel to the location of the product.

② PRODUCT DIMENSIONS



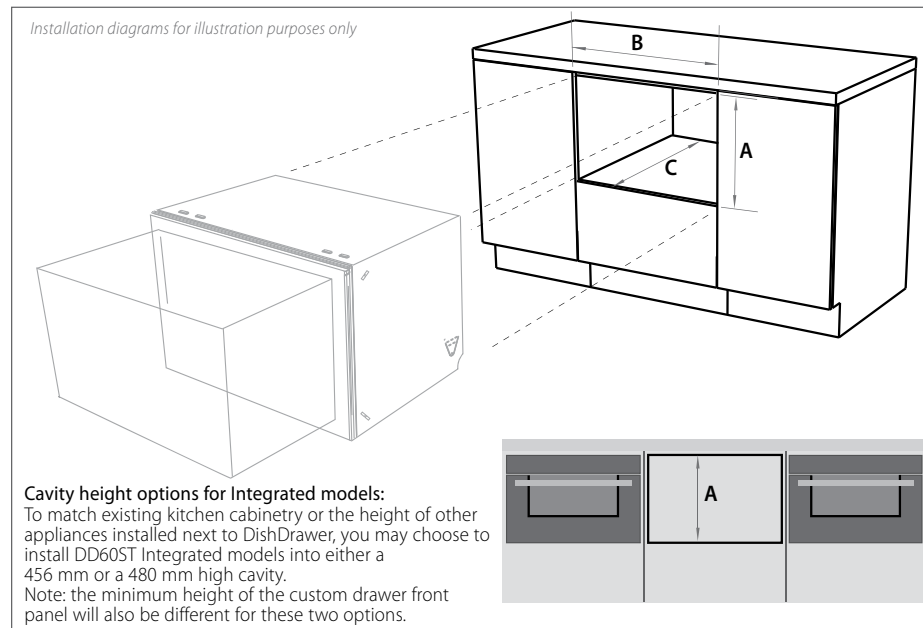
Product dimensions (mm)

	Prefinished Flat door DD60ST	Integrated 456 mm cavity ² DD60ST	Integrated 480 mm cavity DD60ST	
A	overall height ¹ of product (incl. drawer front height)	477 ³	453	477 ³
B	overall width of product	599	599	599
C	overall depth of product (excl. curvature/handle)	570	570 ⁴	570 ⁴
D	depth of drawer (open) (excl. curvature/handle)	538	538	538
E	height ¹ of chassis	453	453	453
F	depth of chassis (incl. trimseal)	552	552	552
G	depth of drawer front panel (excl. curvature/handle)	18	18	18
H	depth of curvature or handle	41	n/a	n/a
I	height of drawer front	470	442 min	470 min
J	height of venting area at base of product	9	9	9
K	height of installation bracket slots (on top of chassis)	2	2	2

¹Chassis heights include bracket slots ²In this instance, you would skip step ⑥ ³Includes cavity bracket ⁴Panel thickness - 18 mm

Note: for Prefinished Flat door models, the height from the top of handle to the top of door - 64 mm

③ CABINETY DIMENSIONS



Cavity height options for Integrated models:

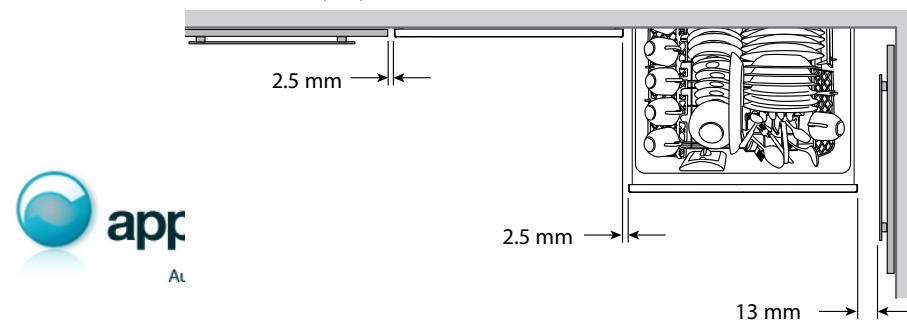
To match existing kitchen cabinetry or the height of other appliances installed next to DishDrawer, you may choose to install DD60ST Integrated models into either a 456 mm or a 480 mm high cavity.

Note: the minimum height of the custom drawer front panel will also be different for these two options.


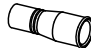


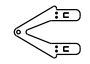






Cabinetry dimensions (mm)

Cabinetry dimensions (mm)		Prefinished Flat door DD60ST	Integrated 456 mm cavity DD60ST	Integrated 480 mm cavity DD60ST
A	inside height of cavity	480	456	480
B	inside width of cavity	600	600	600
C	inside depth of cavity (inside)	580	580	580

Minimum clearances (mm)



4 PARTS SUPPLIED

										
Drain hose support (1)	Drain hose joiner (1)	Wire clip (1)	Side mounting bracket kit (A and B) (2) OPTIONAL	Top mounting brackets (2) OPTIONAL	Clamp (1)	Phillips 16 mm screws (7)	38 mm bottom fixing screws & metal washers (2)	Rubber washer for inlet hose (1)	Cavity bracket kit (1)	Moisture protection tape (1) (to prevent moisture damage)

If the Drain hose supplied is not long enough to reach your services, you **must** use a Drain Hose Extension Kit P/N 525798 which will extend the drain hose by 3.6m. The kit is available from the nearest Fisher & Paykel Authorised Service Centre or our local website listed at the end of this document.

5 CAVITY PREPARATION

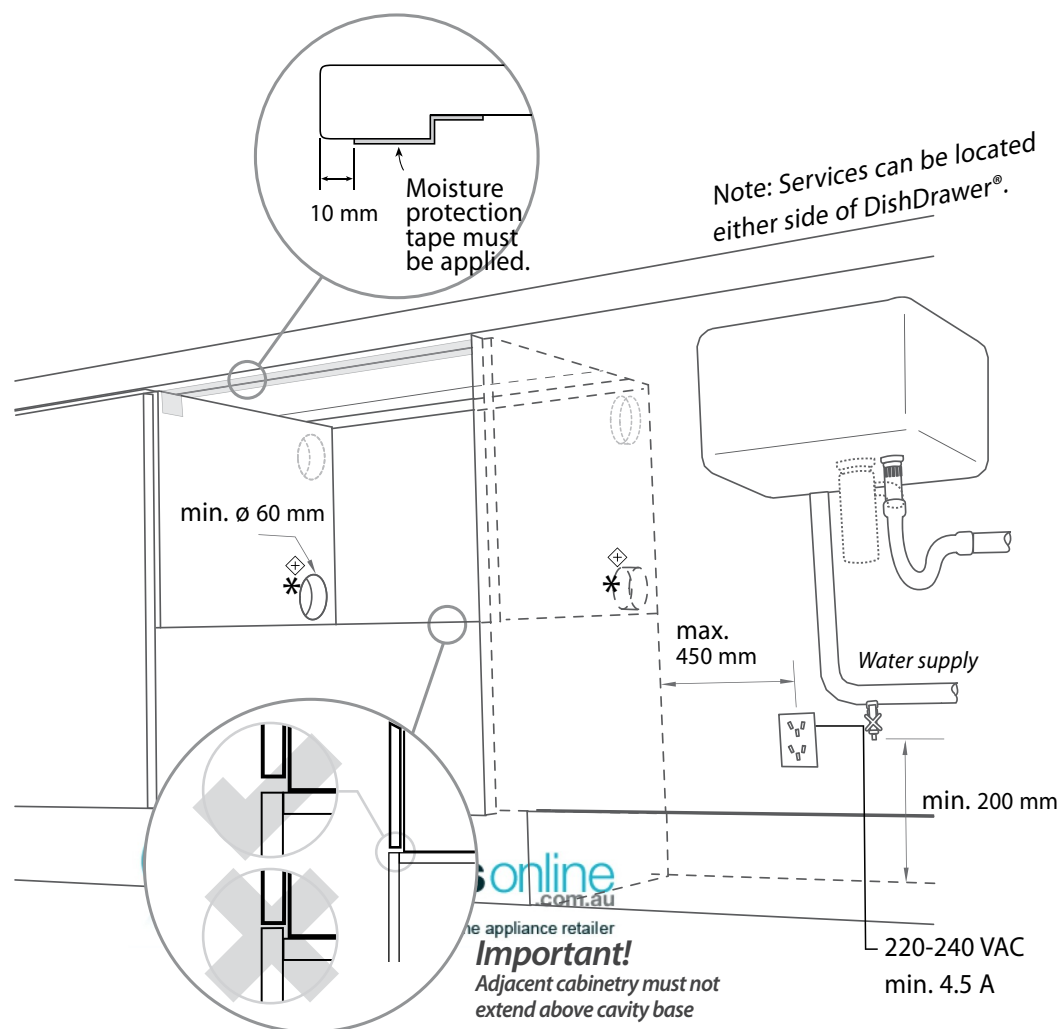
◆ These marks indicate formed bracket screw locations.

* Preferred position. If adequate clearance, services hole can be higher. If hole is higher, ensure drain hose is routed straight into the waste connection.

- **Water Connection**
Recommended **COLD** (Maximum 60°C).
¾" BSP (GB20) to suit flat washer.

- | | | |
|-------------------------|-----------------|--------------------|
| ■ Water Pressure | Max | Min |
| Water softener models | 1 MPa (145 psi) | 0.1 MPa (14.5 psi) |
| Other models | 1 MPa (145 psi) | 0.03 MPa (4.3 psi) |

- Drains will need to be separated to satisfy kosher requirements. We suggest you confirm acceptability with your local rabbi in respect to kosher installations.



Max. distance of hoses and cord from chassis edge	Left hand side	Right hand side
<i>Drain hose</i>	2000 mm	1800 mm
<i>Inlet hose</i>	1650 mm	1250 mm
<i>Power cord (excl. plug)</i>	1650 mm	1650 mm

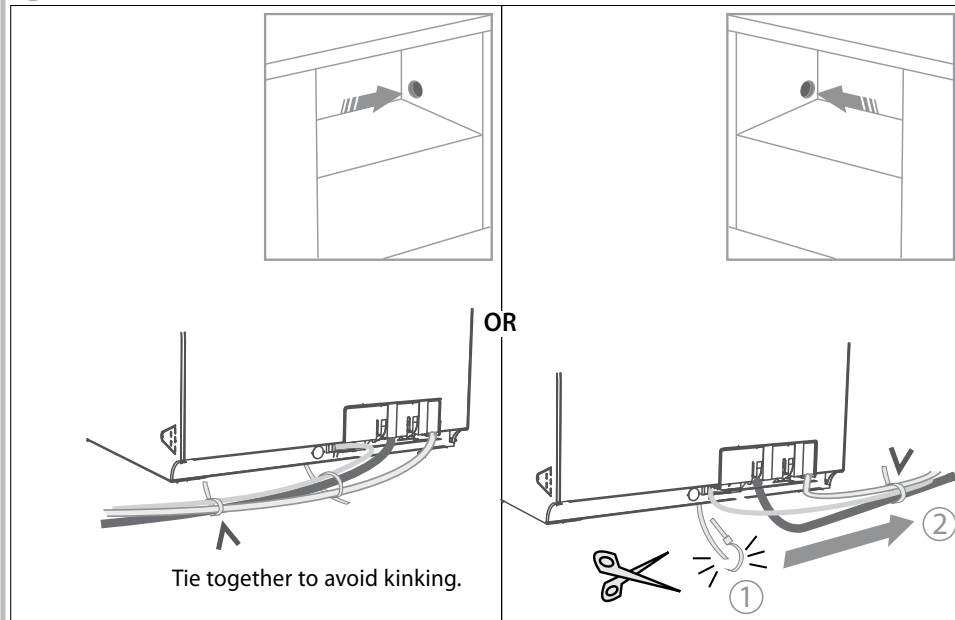


⑥ PREFINISHED FLAT DOOR & INTEGRATED MODELS FOR 480 mm CAVITY ONLY - ATTACH CAVITY BRACKET

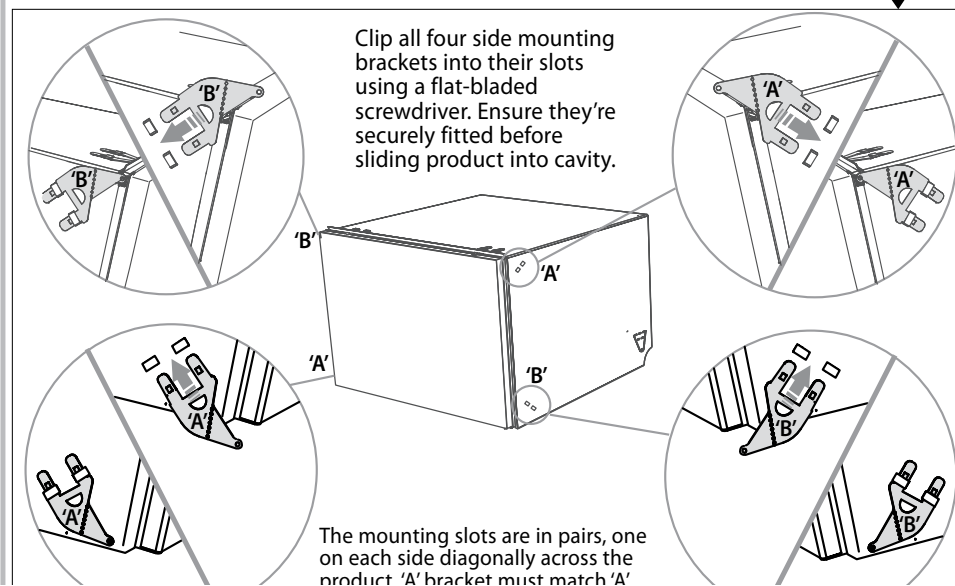
(SEE SEPARATE INSTRUCTION SHEET SUPPLIED WITH BRACKET)

RECOMMENDED METHOD - SECURE WITHOUT DRAWER REMOVAL (FRAMELESS CABINETRY ONLY)

⑦ ROUTE THE HOSES

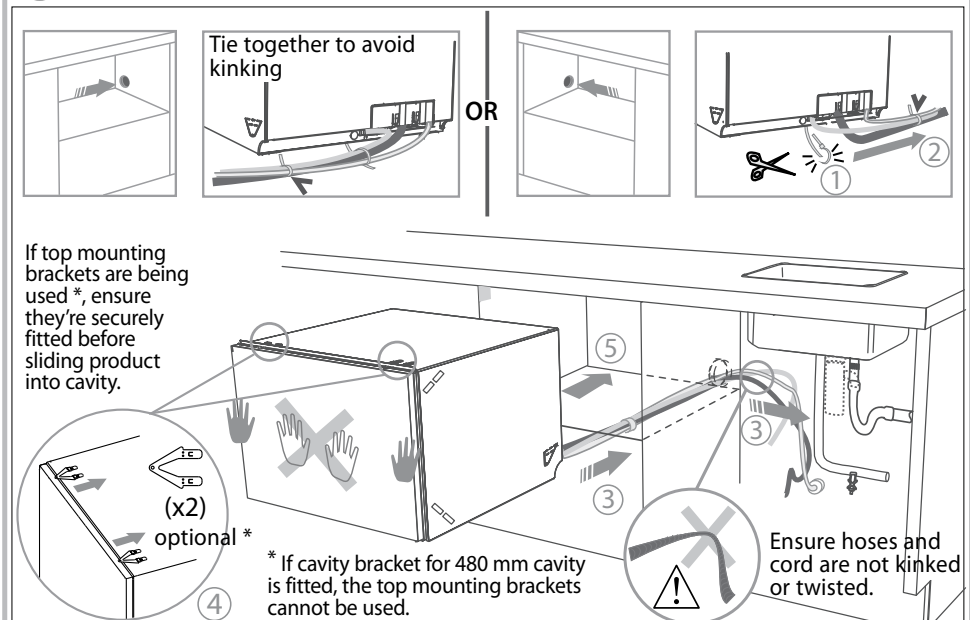


⑧ ATTACH SIDE MOUNTING BRACKETS

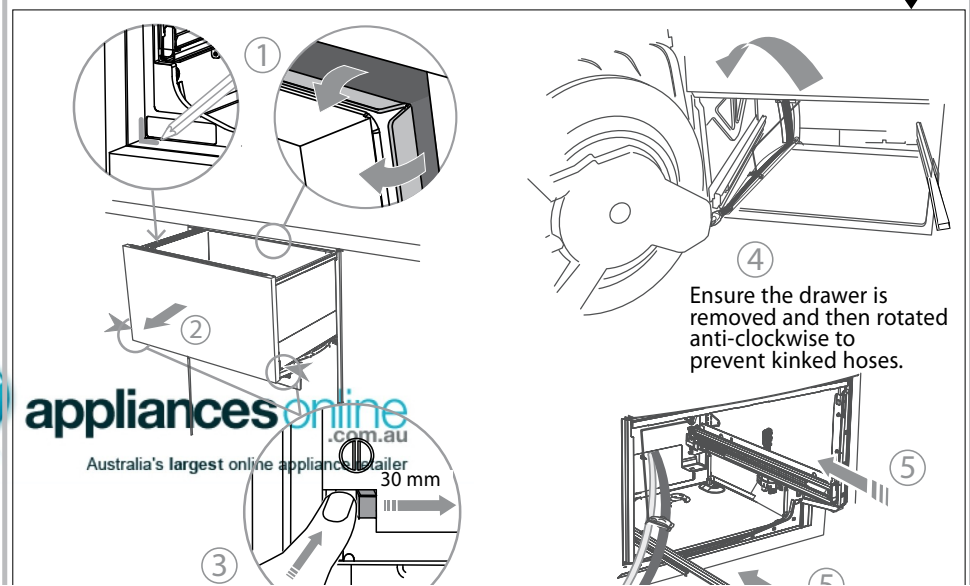


ALTERNATIVE METHOD - SECURE BY DRAWER REMOVAL

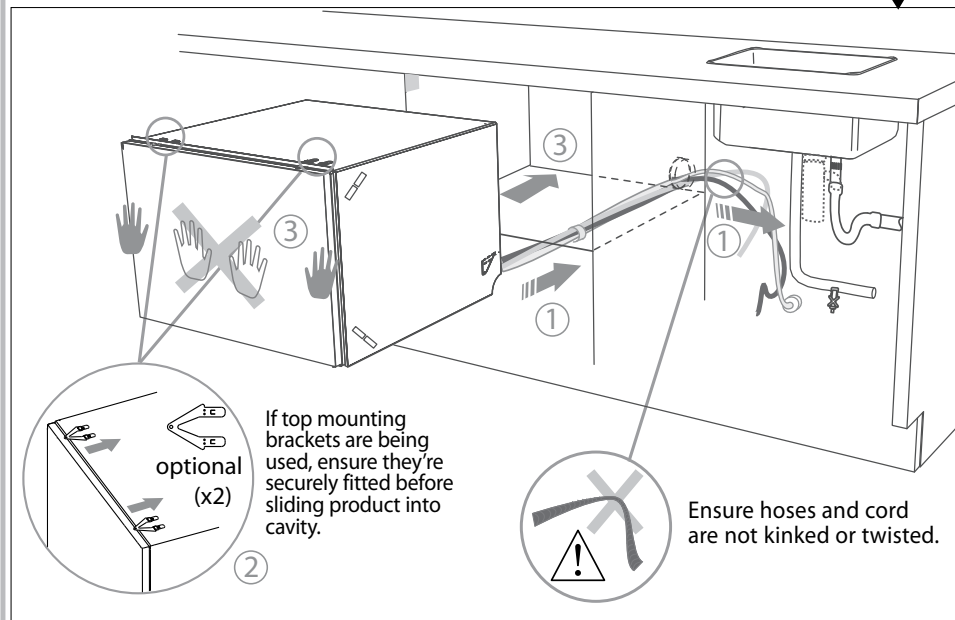
⑦ ROUTE THE HOSES AND MOVE INTO CAVITY



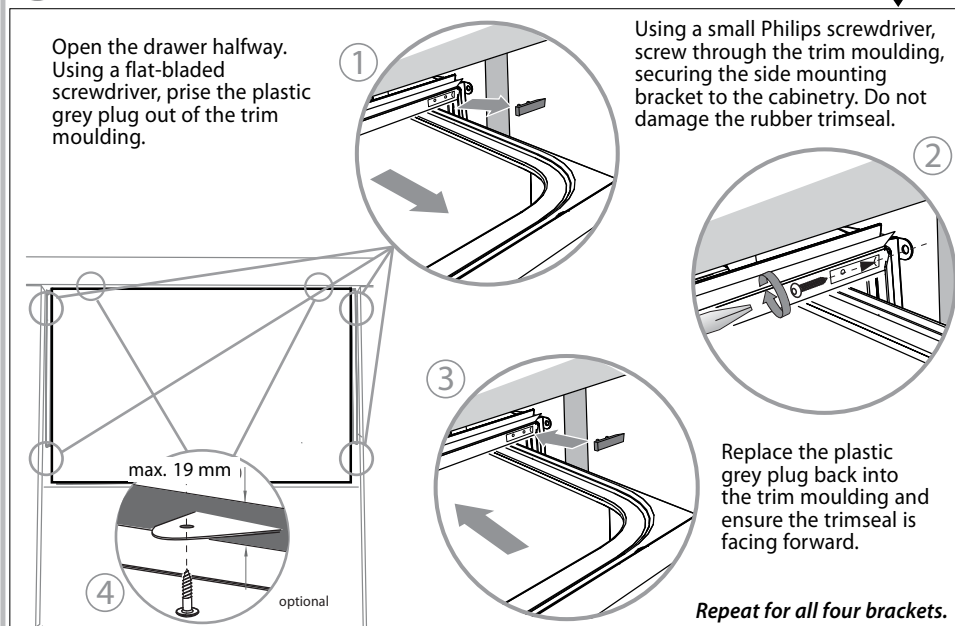
⑧ REMOVE DRAWER



9 MOVE INTO THE CAVITY

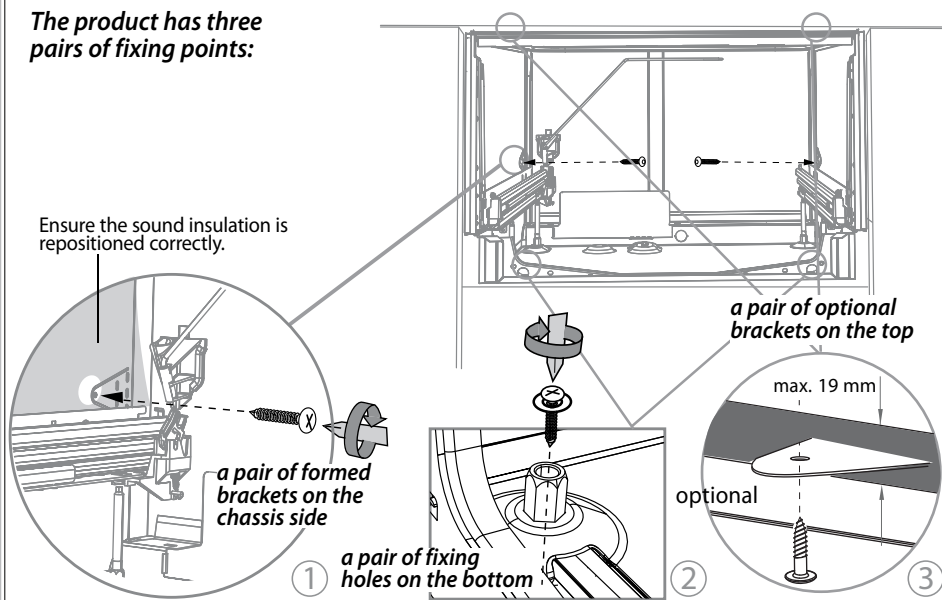


10 SECURE THE DRAWER

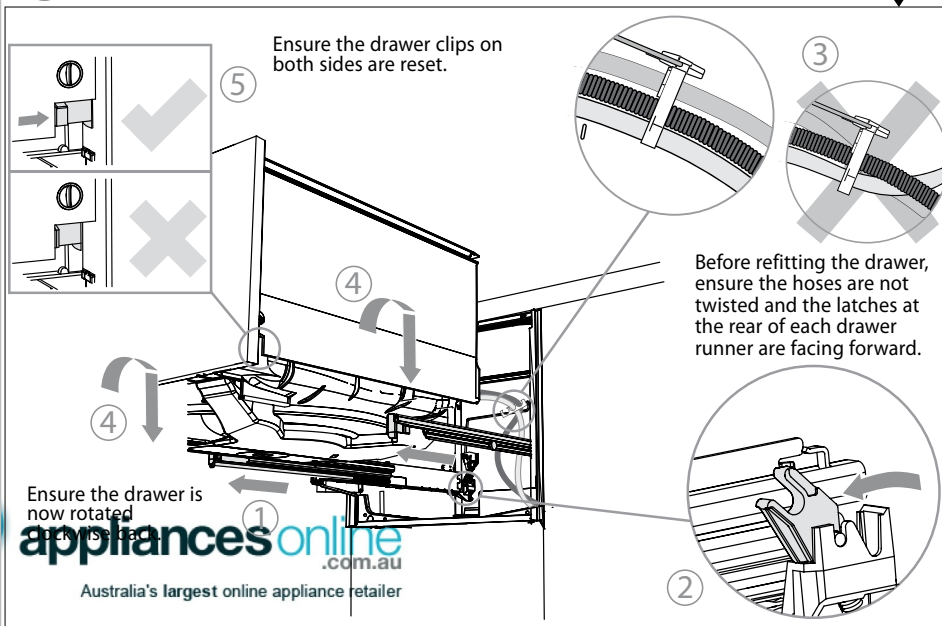


9 SECURE THE DRAWER

The product has three pairs of fixing points:



10 REFIT THE DRAWER



A DishDrawer® and Standpipe Ø 38 mm

Technical drawing of the U-shaped cable. The drawing shows a U-shaped cable with a maximum length of 120 mm and a diameter of 38 mm. The cable is shown in two states: a solid state and a retracted state. The retracted state is indicated by a dashed line and an arrow pointing upwards. The dimensions are given as 750-882.5 mm for the overall length and 120 mm for the maximum length of the U-shape.

Waste Disposal
(optional)
***Do not connect to
DishDrawer®***

min. R 200 mm

Fit the supplied rubber washer.

 180°

⑤

B DishDrawer® using sink trap with drain hose joiner

Waste Disposal (optional)
Do not connect to
DishDrawer®

HIGHLOOP
min. 150 mm

min.
R 200 mm

Supplied drain hose joiner
19 mm waste tee

Ensure hoses are routed straight to joiner.
Remove excess hose material if necessary.

Fit the supplied rubber washer.

13

6

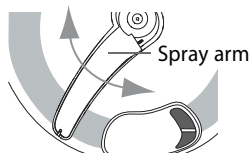


Australia's largest online appliance retailer

12 FINAL CHECKLIST



- ☐ Check all parts are installed.
- ☐ Ensure product is level, securely fastened to the cabinetry and opens and closes freely. The DishDrawer® must be free to fully close with no resistance from the cabinetry.
- ☐ Ensure inlet hose to water supply has supplied rubber washer fitted, and that it is tightened a further half turn after seal contact.
- ☐ Ensure any knockouts or plugs in drain connection have been drilled out and drain connection has been made.
- ☐ The drain hose joiner must not support the weight of excess hoses. Keep hoses as fully extended as possible to prevent sagging. Any excess length of hose should be kept on the DishDrawer® side of the highloop.
- ☐ If using Plumbing and Drainage OPTION B, ensure the Highloop is a minimum 150 mm higher than the drain hose joiner.
- ☐ Turn on the power and water supply. Then press the Power (⏻) button to turn the DishDrawer® on. The DishDrawer® should beep and Wash Programme lights light up.
- ☐ Check the spray arm is in place and free to rotate.



- ☐ Add three cups of water into the DishDrawer®. On the Wash Programme Selector Panel press Rinse and close the drawer. Start the programme by pressing the Start/Pause (⏮) button.
- ☐ After the Rinse programme has finished, ensure machine has run and drained correctly.
- ☐ Check water supply and drainage connection for leakage.

13 TROUBLESHOOTING

- **Excessive water remaining above the filter plate, after the rinse cycle**
Check for kinked drain hoses or blocked waste connection, highloop not properly installed or drain hoses not routed correctly.
- **No water supply**
Check water is connected, turned on and the spray arm is correctly fitted and free to rotate.
- **No lights come on when the drawer is opened**
Ensure power is connected and is switched on. Check if Auto power option is on.
- **Water around water supply and drainage connections**
Check connections, existing plumbing and hoses for leaks. Check rubber washer and hose clamp are correctly fitted.
- **If product is tipping**
Ensure the product is secured to the cabinetry.
- **If front panels are misaligned**
Check and relevel product. Check the cabinetry is square.
- **Drawer doesn't close properly**
Ensure nothing is obstructing the drawer from closing properly eg sound insulation, hoses or drawer latches.
- If a problem occurs, consult the Troubleshooting section of the User guide.
- If after checking these points you still need assistance, please refer to the Service & Warranty book for warranty details and your nearest Authorised Service Centre, or contact us through our website, listed below.