



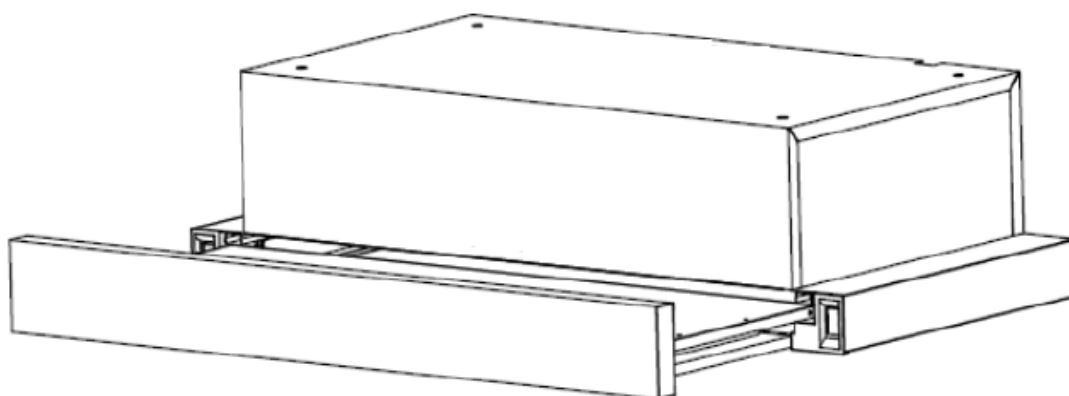
USER MANUAL FOR

SAH461SS

SAH462SS

SAH491SS

SAH492SS



CONTENT

1.....	GENERAL
--------	---------

2.....	SAFETY PRECAUTION
3.....	WARNING!!
4.....	INSTALLATION INSTRUCTIONS
5.....	ATTENTION
6.....	OPERATION
7.....	USE AND MAINTENANCE
8.....	WARRANTY

1. GENERAL

A) Carefully read the following important information regarding installation safety and maintenance before using the hood. Keep this information booklet accessible for further reference.

2. SAFETY PRECAUTION

- A) Make sure the room is properly ventilated when using the hood with gas appliances or open fires burning
- B) The hood will not function correctly in negative air flow
- C) Provide adequate ventilation in the environment for a safe operation for the cooker hood.
- D) Follow the local laws and regulation applicable for external air evacuation
- E) The extracted air **must not** be routed into a duct used to discharge fumes of gas operated appliances
- F) Appliance shall only be used with rated voltage and frequency as shown on rating label.
- G) There is a fire risk if cleaning is not carried out in accordance with the instruction on a regular basis.

3. WARNING!!

In certain circumstances electrical appliances may be a danger hazard.

- A) Do not change the filters while the cooker hood is operating.
- B) Do not touch the light bulbs or underside of hood after use .It will be hot
- C) Do not disconnect the appliance with wet hands or with excessive force on the supply cord.
- D) Do not cook in a way that could result in flames being sucked into the hood and causing a fire.
- E) Constantly check frying food to ensure that hot oil will not become a fire hazard.
- F) Switch off at power point and disconnect the electrical plug prior to any maintenance or cleaning
- G) This appliance must not be used by children without adult supervision. Disabled people may require assistance.

THE MANUFACTURER CANNOT BE HELD RESPONSIBLE IF THE INSTRUCTIONS ARE NOT FOLLOWED

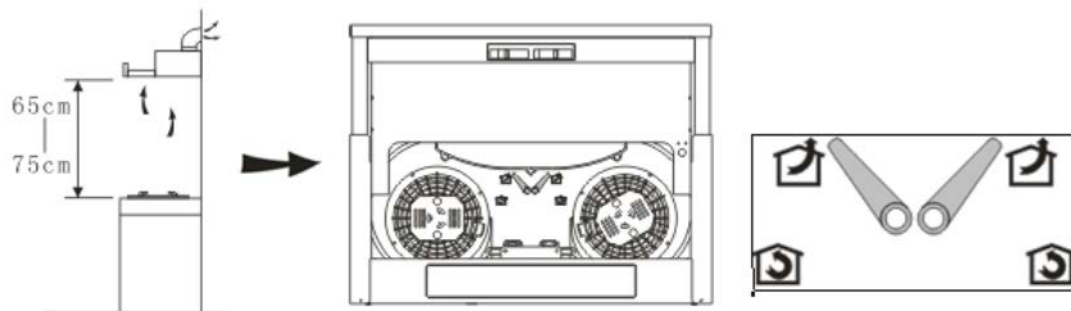
The appliance has been designed to work as a DUCTING hood (evacuation of the air) or

RECYCLING hood (recycling of the filtered air)

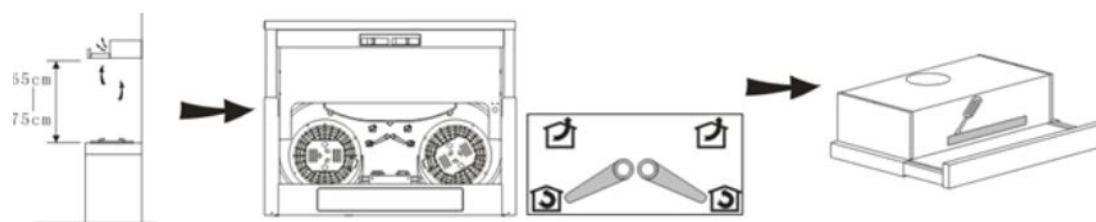
The **MINIMUM** distance between the cooker and the lower part of the hood must be 650mm. This is as per regulation. If installed at a height greater than 750mm the hood may not perform as it is designed.

OPERATION

Choose the ducting mode or the recirculation mode as needed.



DUCTING MODE



RECIRCULATION MODE

4. INSTALLATION INSTRUCTIONS

Method one:

4.1 The cooker hoods should be placed at a distance of 65-75cm from the cooking surface..



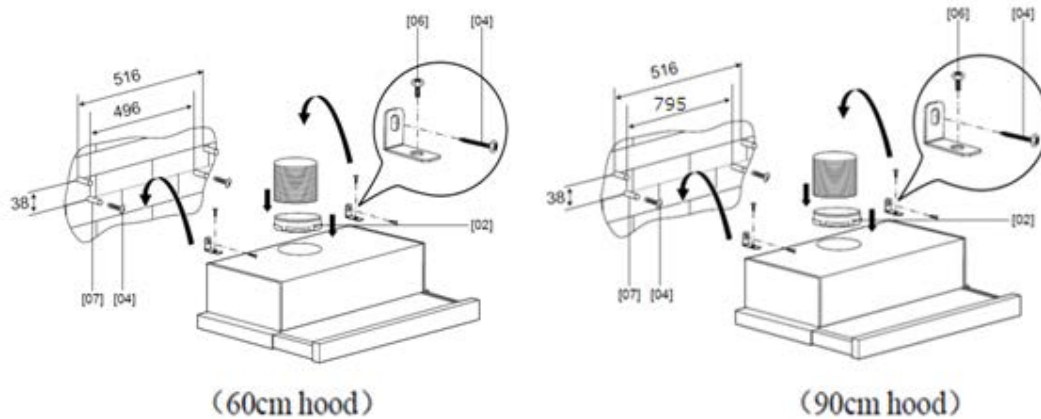
4.2 To install onto the wall drill 4 holes of Ø8mm on a suitable place according with the Centre distance of hole in the back of the cooker hood.

4.3 Insert the wall plugs the holes.

4.4 Insert the screws into the wall plugs and screws

4.5 Put up the cooker hood onto the screws and tighten

4.6 Put the one way valve onto the cooker hood.

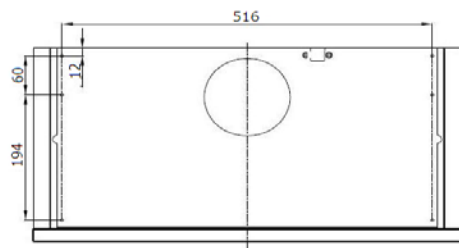


Method two:

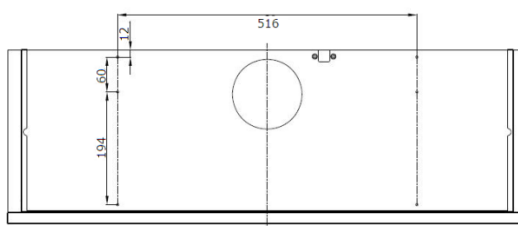
4.1 Drill 6 holes of 4mm diameter at the bottom of the hanging cupboard

4.2 Put the one way valve on the cooker hood if ducted and cut hole or if internal venting no hole required. Install the cooker hood onto the bottom of the cupboard and tighten the hood in place using the enclosed 6 screws.

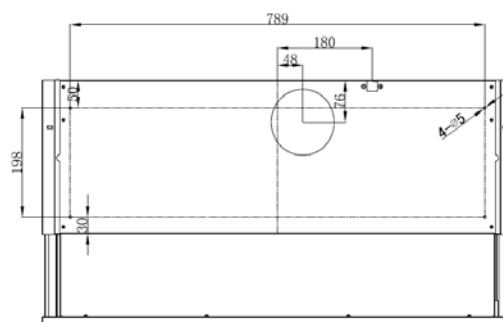
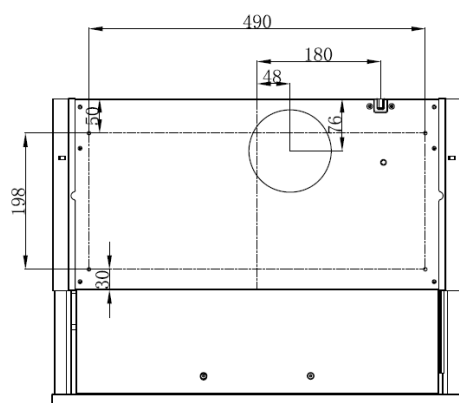
4.3 Install the adjusting flap on the bottom of the hood in order to hide the gap between hood back and cupboard.



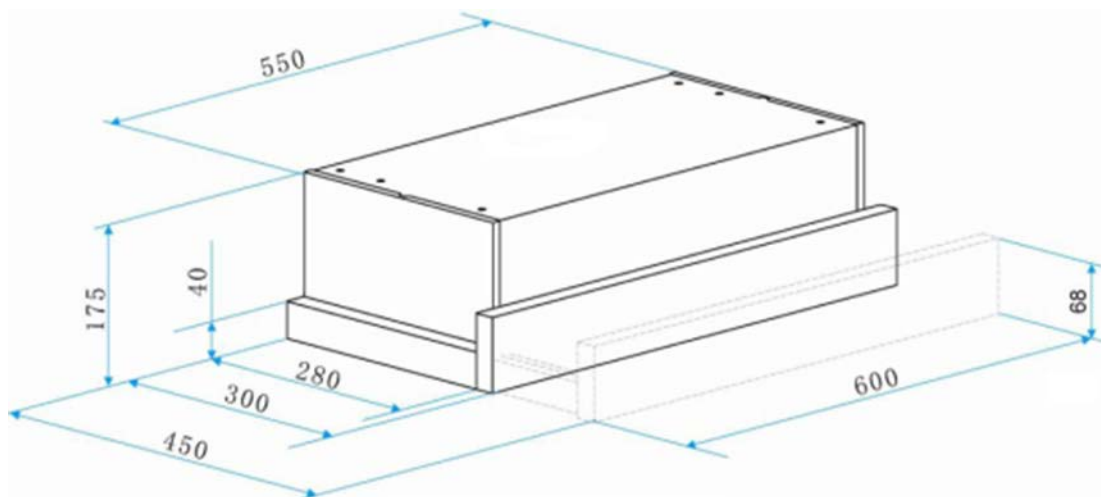
SAH461SS



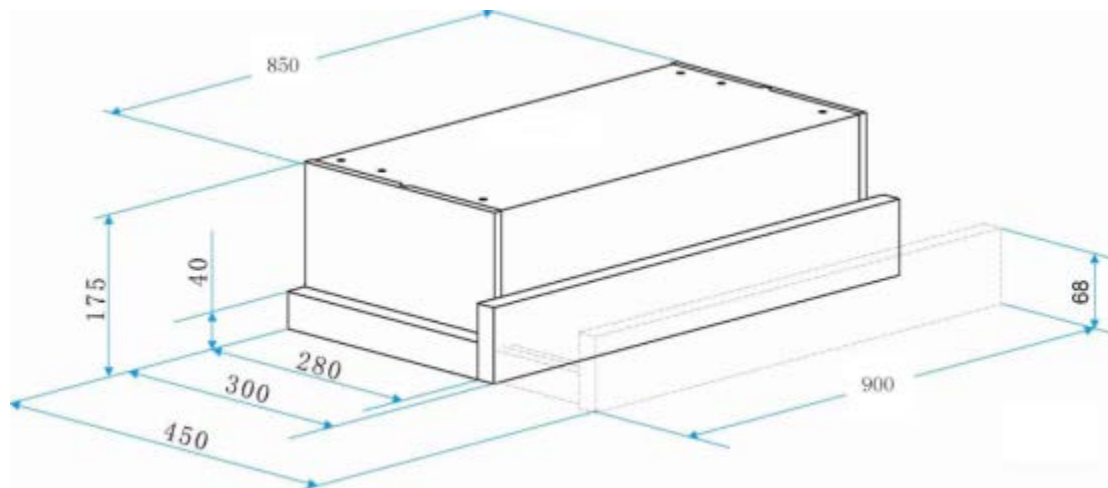
SAH491SS:



DIMENSIONAL DRAWING 60CM



DIMENSIONAL DRAWING 90CM

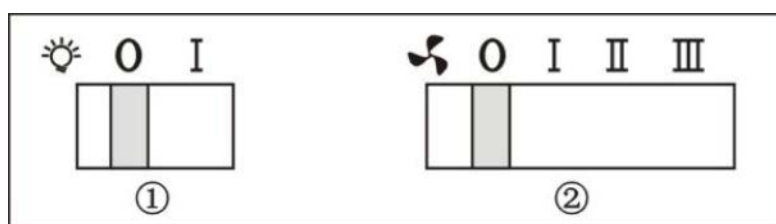


6. OPERATION

6.1 Connect the plug into the power.

6.3 Push the switch ① into “I”, the lamp is on; push into “0”, the lamp is off.

6.4 Push the switch ② into “I、II、III”, the motor will be on “low、mid、high”(three speeds) push into “0”, the motor will be off.



5. ATTENTION: should the lamps not work, ensure they are clicked into the socket CORRECTLY

7. USE AND MAINTENANCE

It is recommended to operate the appliance prior to cooking.

It is recommended to leave the appliance in operation for 15 minutes after cooking is finished in order to further remove cooking vapor and odors.

If the appliance is not in use, please turn off.

Do not use the range hood if it is damaged..

If the supply cord is damaged, it must be replaced by the manufacturer, its service agent or similarly qualified persons in order to avoid a hazard.

Don't immerse the appliance in liquid.

The proper function of the cooker hood depends on the regularity of the maintenance operations, in particular, the active carbon filter (in recirculation mode)

The anti-grease filters capture the grease particles suspended in the air, and are therefore subject to clogging according to the frequency of the use of the appliance.

In order to prevent fire hazard, it is recommendable to clean the filters at least every 2 months by carrying out the following:

- Remove the filters from the cooker hood and wash them in a solution of water and neutral liquid detergent, leaving to soak.

- Rinse thoroughly with warm water and leave to dry.

- The filters may also be washed in the dishwasher.

The aluminum panels may alter in color after several washes. This is not cause for customer complaint or replacement of panels.

Clean the outside of the fan and other surfaces of the cooker hood regularly using a cloth moistened with a mild non-abrasive liquid detergent.

Before any repair on the cooker hood, turn off at the power point and unplug the cord

Replace filters approximately every 12 months.

Warranty

THIS WARRANTY IS VALID IN AUSTRALIA ONLY

Note:

Please complete the following details when you have unpacked the product and **retain** this card with the purchase invoice or sales docket.

Warranty:

This product is covered by a Warranty in addition to all rights available to you by statute.

Our goods come with guarantees that cannot be excluded under the Australian Consumer Law. You are entitled to a replacement or refund for a major failure and for compensation for any other reasonably foreseeable loss or damage. You are also entitled to have the goods repaired or replaced if the goods fail to be of acceptable quality and the failure does not amount to a major failure.

The Warranty is for a period of two years (24 months) from the date of purchase for Parts and Labour, however, Dishwashers will have a 10 Year Parts and Labour Warranty on the Electric Wash Motor.

The Warranty period for Front load washers and dryers will carry a full 5 year warranty and a 10 year parts and labour warranty on the Electric Wash Motor Only.

Refrigeration appliances will have an additional three years (36 months) Warranty, after the initial 24 months, for Parts only on the Sealed System eg; compressor, condenser, evaporator, filter dryer and pipe work, subject to the following conditions;

The conditions mentioned above are;

1. that the purchaser carefully follows all instructions packed with the product;
2. that the purchaser carefully follows the installation instructions provided and complies with the electrical wiring regulations, gas and/or plumbing codes;
3. that the purchaser carefully follows the instructions provided in the owner's handbook relating to the proper use and care of the product and does not use the product for any purpose other than the Domestic, indoor use, for which it has been designed.
4. that the product was purchased and installed in Australia;
5. that this Warranty does not extend to;
 - a) Optional glass lids for hobs apart from claims which relate to mechanical or physical damage thereof at the date of purchase;
 - b) Light globes (with the exception of microwave oven globes);
 - c) Damage to ceramic glass caused by liquid or solid spillovers, lack of maintenance or impact. Please read the booklet explaining about liquids containing **sugar**;
 - d) Damage to the surface coatings caused by cleaning or maintenance using products not recommended by the owners handbook;
 - e) Defects caused by normal wear and tear, accident, negligence, alteration or misuse.
 - f) A product dismantled, repaired or serviced by any serviceperson other than an authorised employee or agent of Smeg Australia Pty Ltd;
 - g) The servicing of Freestanding Microwaves under this Warranty does not cover in home service and is limited to the appliance being taken to the nearest Service Agent.
 - h) The provision of service under this Warranty is limited by the boundary of the nearest agent's area. Travelling cost incurred for service outside this area is not covered by this Warranty and will incur commercial cost to be paid by the customer regulated by the number of kilometres travelled beyond the service area.

For service, please contact your local Smeg Australia Pty Ltd office or dealer/retailer from whom you purchased the product. If you are unable to establish the date of purchase, or if the fault is not covered by this Warranty, or if the product is found to be in working order, you will be required to bear all service call charges.

CONTACTS:

SYDNEY – HEAD OFFICE.....Ph. (02) 86674888 Fax (02) 86674800
QUEENSLAND.....Ph. (07) 32660444 Fax (07) 32667511
NEWCASTLE.....Ph. (02) 49609266 Fax (02) 49609277
CANBERRA (Contact Wagga Wagga).....Ph. (02) 69228600 Fax (02) 69228611
WAGGA WAGGA.....Ph. (02) 69228600 Fax (02) 69228611
VICTORIA.....Ph. (03) 90941999 Fax (03) 90941990
TASMANIA.....Ph. (03) 63348166 Fax (03) 63348177
SOUTH AUSTRALIA.....Ph. (08) 83461888 Fax (08) 83401034
WESTERN AUSTRALIA.....Ph. (08) 93898000 Fax (08) 93898088

DETAILS:

Model No.....
Serial No:
Date of Purchase:
Retailer:
Invoice/Docket No:
Customer Name:
Customer Telephone:
Customer Address:
.....

Smeg Australia Pty Ltd, 2 – 8 Baker Street, Banksmeadow. N.S.W. 2019 (www.smeg.com.au)

ABN No.33 146 901 082. ACN No.146 901 082

