

# monster<sup>®</sup>

ULTRA DRY  
S T E A M

# Steamer



## MONSTER STEAM CLEANER (SC4X2)

INSTRUCTION MANUAL

CUSTOMER SERVICE:  
1800 663 866 (AUS) 0800 666 783 (NZ)

Model #: SC4X2 AUS, NZ

# IMPORTANT SAFE T

## SAVE THESE INSTRUCTIONS

**When using an electrical appliance, basic safety precautions should always be observed, including the following:**

***Read all instructions before using this appliance.***

### **WARNING:**

To reduce the risk of fire, electrical shock, or injury:

1. This appliance is authorized for household/domestic use only. Commercial use will void the warranty.
2. Do not immerse the Steam Cleaner in water or other liquids. Always turn off and unplug appliance when filling with water.
3. Do not allow to be used as a toy. Close attention is necessary when used by or near children, pets or plants. Do not leave Steam Cleaner unattended. Always unplug unit when not in use. Keep out of reach of children.
4. Use only as described in this manual. Use only manufacturer's approved and supplied parts and accessories. Use of other accessories is not recommended and will void the warranty.
5. Do not use if the steam hose, accessories, power cord or plug has been damaged, or if any part of appliance has been dropped, damaged, left outdoors, or dropped in water. Do not attempt to disassemble or repair appliance. Return it to the manufacturer or an authorized service center for examination or repair.
6. Do not wrap cord too tightly around appliance. Never carry by the cord, or yank to disconnect from an outlet. To unplug, always grasp plug to remove from outlet – do not pull on cord.
7. Do not handle cord or appliance with wet hands or without shoes on.
8. Keep cord away from heated surfaces (e.g., cooking surfaces), and sharp edges and corners.
9. Follow all labels and marking instructions on Steam Cleaner.
10. Do not put any objects into openings. Do not use with any opening blocked.
11. Keep hair, loose clothing, fingers, and all parts of body away from openings and moving parts. The steam released from the appliance is extremely hot at the point that it exits the steam hose or accessory. Avoid direct contact with steam jet.
12. Before emptying the appliance of water during the cleaning process to descale the Boiler, always turn appliance off, unplug appliance and allow it to cool completely. Always turn the Water Release Cap slowly to open the Boiler – this will allow any remaining steam to escape gradually.
13. Use caution while emptying the appliance during the cleaning process to descale the Boiler. Contact with hot metal parts, hot water or steam may cause burns.
14. Be sure Water Tank Cap is (and remains) closed during use.
15. Never use cleaning solutions, perfumes, oils or other chemical substances other than tap or distilled/demineralized water in the Water Tank. Use of chemicals may damage appliance and will void your warranty.
16. When in use, never turn the appliance on its side. Do not direct steam at

# E TY INSTRUCTIONS

SAVE THESE INSTRUCTIONS


people, animals or other electrical equipment (i.e. inside an oven). The appliance should be used while the unit is resting on the ground.

17. Do not operate around flammable or combustible liquids such as gasoline, or in areas where fumes may be present. Do not operate outdoors if wet.
18. To reduce the likelihood of circuit overload, do not operate another high wattage appliance on the same circuit. Plug in to a standard earthed (220-240V, 50-60Hz) electrical outlet.

**ATTENTION: This appliance is equipped with a 3-prong grounded power cord. Insert only into a 3-prong grounded electrical outlet. Do not try to remove the contacts of the grounded connection.**

19. Do not use extension cords or outlets with inadequate voltage. Use a 10-ampere extension cord. Lower amperage cords may overheat.
20. Store appliance indoors in a cool, dry place, and out of reach of children when not in use.
21. If appliance is damaged, it must be repaired by manufacturer or its service agent, in order to avoid safety issues to the operator.
22. This appliance is not intended for use by persons (including children) with reduced physical, sensory or mental capabilities, or lack of experience and knowledge, unless they have been given supervision or instruction concerning use of appliance by a person responsible for their safety.
23. Read and follow all important notices in this guide.

## CAUTIONS

- *Always drain condensed water from Hose before use or if appliance has been left idle for a period of time. To drain, direct Nozzle into a sink and slide the trigger on the Steam Gun forward. Once Hose is empty, resume normal use. Never direct nozzle toward people, animals or plants.*
- *Extreme care should be taken when opening the Water Release Cap during the cleaning process to descale the Boiler. The appliance may still be hot from use and escaping steam can cause scalding.* 

## \*IMPORTANT\*

*Please read all of the instructions for use and Important Safety Instructions carefully. Remove and discard all packaging materials and keep them out of the reach of children.*

**Please contact the Customer Support Line should you require further information or instructions not contained in this manual.**

*Monster Appliances discharges itself of any responsibility for damage or injury to persons or property, in the event that the appliance is damaged as a result of improper use, unauthorised repair, unauthorised maintenance work or use of the appliance that is not consistent with the instructions contained in this instruction manual.*



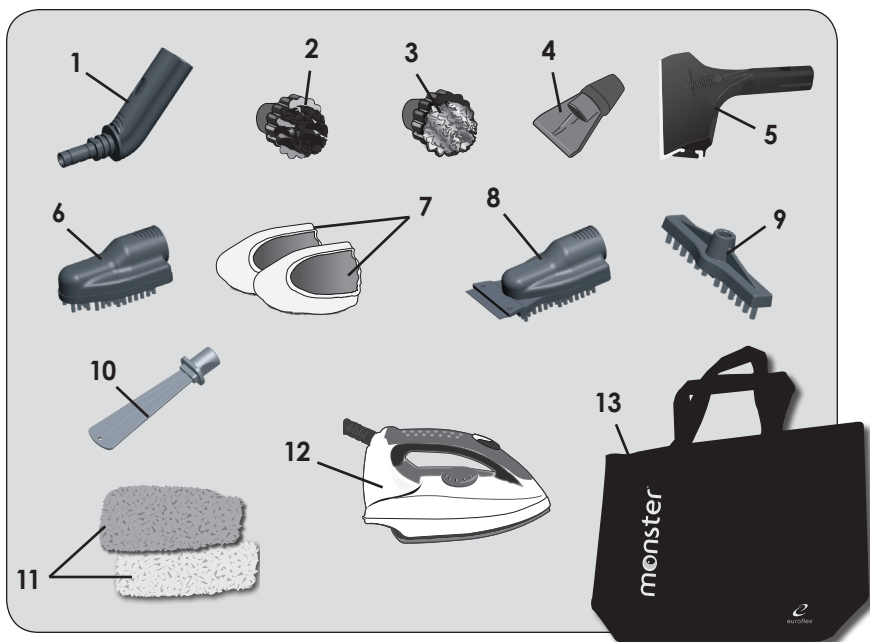
## Technical Data

**Adapter Input:** 220-240V~, 50-60Hz  
**Power:** 1250 watts

**Boiler:** Stainless Steel

**Water Tank Capacity:** 1.35 liter/2 pints

**Boiler Steam Temp.:** 130°C/266°F (max)



#### **SMALL ACCESSORIES**

1 - Brush Adapter (3)

2 - Nylon Detail Brush

3 - Brass Detail Brush

4 - Scraper

5 - Window Tool

6 - Small Brush (nylon bristles)

7 - Small Brush Microfibre Pad (2)

8 - BBQ Brush (stainless bristles)

9 - Grout Brush

10 - Blind Cleaner

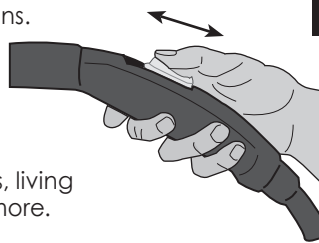
11 - Blind Cleaner Microfibre Pad (2)

12 - Iron attachment

13 - Accessory Bag

## **1** The Monster Steam Cleaner Features

1. No need for detergents or chemicals. Just add water.
2. Automatic refilling system.
3. Ergonomic, lightweight Steam Gun.
4. 2-in-1 steam cleaning and ironing functions.
5. Versatile, quick-change accessories.
6. On/Off steam control.
7. Stainless Steel Boiler – non-corroding, reduces calcium buildup.
8. Multiple uses – clean bathrooms, kitchens, living areas, pet areas, appliances and much more.



*Continued on next page*

## 2 Accessories - Attachment & Descriptions

### BRUSH ADAPTER, FLOOR BRUSH, SMALL BRUSH & BBQ BRUSH

**WARNING:** Always ensure steam trigger is off and not steaming when attaching an accessory to the unit.

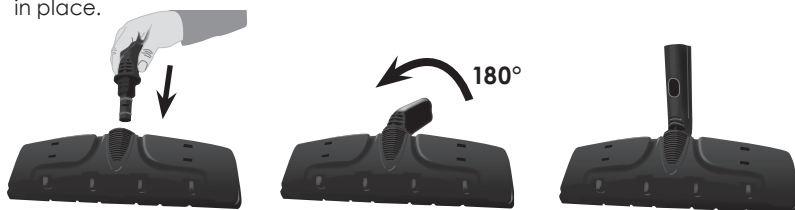
The Brush Adapter is used to connect the Floor Brush, Small Brush and BBQ Brush to the Steam Cleaner.



#### A. Attach Brush Adapter to Floor Brush

The Floor Brush attaches to your Steam Cleaner using the Brush Adapter.

**To use:** Insert the Brush Adapter in the Floor Brush and turn it 180° to lock it in place.



#### B. Attach Brush Adapter to Small Brush

The Small Brush is used for smaller areas that the Floor Brush cannot easily reach, such as corners of floors and on stairs.



#### C. Attach Brush Adapter to BBQ Brush

Use the BBQ Brush to scrape and clean grill surfaces.

**To use:** Insert the Brush Adapter in the Small Brush or BBQ Brush and turn it 180° to lock it in place.

### EXTENSION TUBE(s)

The Monster Steam Cleaner comes with two Extension Tubes that are used for floor cleaning and to extend the reach of the Steam Cleaner.



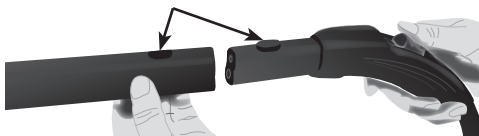
**WARNING:** Always ensure steam trigger is off and not steaming when attaching an accessory to the unit.

## ATTACH EXTENSION TUBE TO STEAM GUN

**To use:** Hold down the locking button on the Steam Gun while sliding it in an Extension Tube. Be sure the locking button lines up with the hole on the Extension Tube and button locks in place.

**To attach Extension Tubes together:** Press down the locking button while sliding Tubes together. Be sure button and hole line up and button locks in place.

**To disconnect Extension Tubes:** Press the locking button and pull the two sections apart.



## ATTACH EXTENSION TUBE TO BRUSH ADAPTER

Once the desired Brush is attached to the Brush Adapter, press the locking button on the Extension Tube while sliding the Tube in the Brush Adapter. Ensure the locking button and the hole on the Brush Adapter line up.

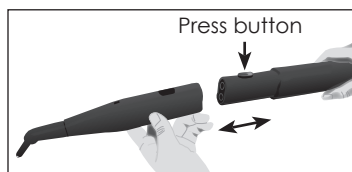


## DETAIL NOZZLE AND Window Tool

### A. Attach Extension Tube or Steam Gun to Detail Nozzle

The Detail Nozzle is very useful for cleaning hard to reach areas. It is ideal for radiators, door and window tracks, shutters and sanitary fixtures.

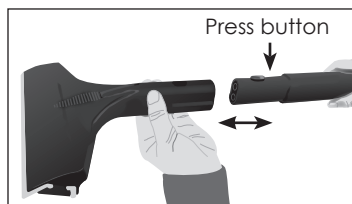
**To use:** Slide and lock Detail Nozzle on the Steam Gun or Extension Tube.



### B. Attach Extension Tube or Steam Gun to Window Tool

The Window Tool is very useful for cleaning large windows and glass.

**To use:** Connect Window Tool to Steam Gun or Extension Tube for hard to reach surfaces. Apply steam liberally, rub with soft spongy edge, then remove excess water and dirt with Tool edge. Wipe dirt from Tool blade.



**CAUTION:** When cleaning windows, always avoid any sudden changes in temperature to prevent glass breakage or cracks.

**WARNING:** Always ensure steam trigger is off and not steaming when attaching an accessory to the unit.

## DETAIL NOZZLE & ACCESSORIES

### A. Attach Nylon or Brass Detail Brush to Detail Nozzle

The Nylon Detail Brush is best for cleaning tile, ceramic and marble. Brass Detail Brush is best for metal.

**To use:** Push the Nylon/Brass Detail Brush on the end of the Detail Nozzle. (Detail Nozzle should be connected to the Steam Gun or Extension Tubes.)



### B. Attach Scraper to Detail Nozzle

The Scraper is best for removing small amounts of wallpaper and also anything that can be scraped from a flat surface, e.g., grease deposits in an oven. It is also useful when defrosting freezers.

**To use:** Push the Scraper on the end of the Detail Nozzle. (Detail Nozzle should be connected to the Steam Gun or Extension Tubes.)



### C. Attach Grout Brush to Detail Nozzle

The Grout Brush is designed to clean the grout in between tile. Use on floors, backslashes, counters and in shower.

**To use:** Push the Grout Brush on the end of the Detail Nozzle. (Detail Nozzle should be connected to the Steam Gun or Extension Tubes.)



The Blind Cleaner will need to be attached to the Detail Nozzle **WITHOUT** it's tip.

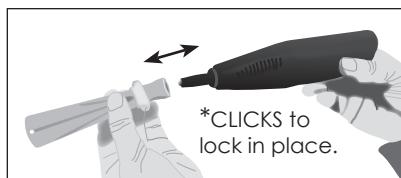
**Remove Tip** by pulling it off the body.



### D. Attach Blind Cleaner to Detail Nozzle

The Blind Cleaner must be used with a Microfiber Pad (See next page for Pad placement instructions). It is perfect for cleaning between slats of wood, vinyl and metal blinds.

**To use:** Push the Blind Cleaner on the end of the Detail Nozzle. (Detail Nozzle should be connected to the Steam Gun or Extension Tubes.)

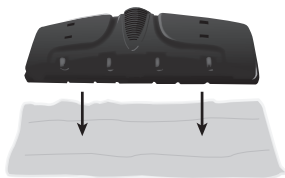




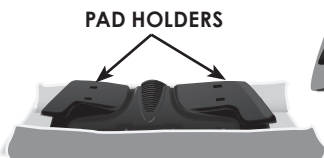
## ATTACH MICROFIBRE PAD TO BRUSHES AND BLIND CLEANER

**FLOOR BRUSH** – A Microfibre Pad can be fitted on the Floor Brush to absorb dirt and protect delicate surfaces. It can also be used on vertical washable surfaces following the same procedure as for the floor.

1. Place Floor Brush on Microfibre Pad.



2. Fold long sides up, then fold ends under Pad Holders.



3. This is how the Floor Brush should look with Microfiber Pad in place.

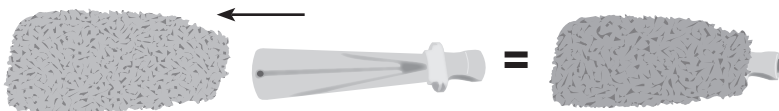


**SMALL BRUSH** – A fitted Microfibre Pad should be placed over the bristles of the Small Brush to clean smooth surfaces such as kitchen cupboards, splash backs, countertops, etc. Fit the Small Microfibre Pad over the bristles and top of Small Brush as shown below.



**WARNING:** The Microfibre Pad around the Floor Brush or the Small Brush can become hot enough to scald or cause burns. Make sure you let the Pad cool before touching it.

**BLIND CLEANER** – A fitted Microfibre Pad should be placed over the Blind Cleaner to clean between slats of blinds. Slide the Blind Cleaner inside the Microfibre Pad as shown below.



### To Order Replacement Pads and Parts

**Call:** 1800 663 866 (Australia) or 0800 666 783 (NZ), or  
**Visit:** [www.monsterappliances.com.au](http://www.monsterappliances.com.au)

**WARNING:** Always ensure steam trigger is off and not steaming when attaching an accessory to the unit.

## CARPET GLIDE and CARPET PAD

The Carpet Glide clips over the base of the Floor Brush allowing the Floor Brush to glide over carpets, making steaming much smoother and easier. Before attaching the Carpet Glide to the Floor Brush a Carpet Pad should be attached to the Carpet Glide.

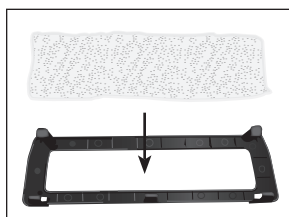
### A. Attach Carpet Pad to Carpet Glide

The Carpet Pad absorbs excess moisture produced by the Steamer, preventing carpet from getting overly damp.

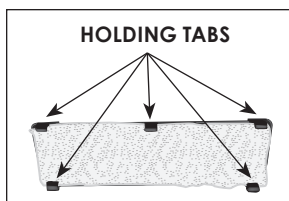
1. Position Carpet Glide with Tabs facing up.



2. Place Carpet Pad in the Carpet Glide.



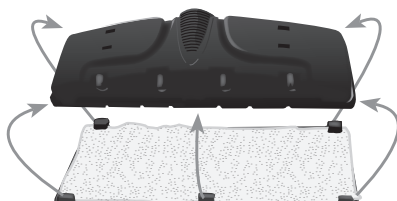
3. Be sure Carpet Pad is seated under the Holding Tabs.



## ATTACH CARPET GLIDE TO FLOOR BRUSH

1. Attach Floor Brush to the Carpet Glide (with Carpet Pad facing up). Use Holding Tabs on Carpet Glide to lock the Floor Brush in place.

2. This is how the Floor Brush should look with Carpet Glide attached.



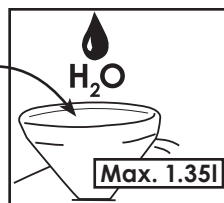
### 3 Filling Steam Cleaner with Water

#### WARNINGS

- Carefully read all instructions before filling the Water Tank.
- Be sure the appliance is switched off at the Power Switch on the Steam Cleaner. The orange light on the Power Switch should be turned off.

#### REMINDERS

- **Use tap water.**
- If tap water is too hard, distilled or demineralized water should be used to avoid the risk of sediment and mineral build-up in the Boiler.
- Do not add detergents, perfumes, oils or other chemical substances to the Water Tank. This will cause damage to the Steam Cleaner and void the warranty.
- Open the Water Tank Cap and insert the Filler Funnel in the Water Tank opening.
- Using the Measuring Cup, pour in a maximum of 1.35 litres of water.
- Do not overfill the Water Tank to avoid water spilling on to the floor.
- Remove the Filler Funnel and tightly close the Water Tank Cap.



#### Automatic Refilling System

This Monster Steam Cleaner model features an Automatic Refilling System. Water from the Water Tank will automatically fill the internal Boiler based on the precise amount of water the Boiler needs to produce steam.

**NOTE: A buzzing sound will be heard each time that the Boiler fills with water from the Water Tank.**

### 4 Turning Steam Cleaner On

- Turn on the Steam Cleaner by switching on the Power Switch. The Power Switch will light up orange.
- The Steam Cleaner will heat up, produce steam and the internal Boiler will become pressurised.
- When the green Steam Ready Light turns on, the Steam Cleaner is ready to use.

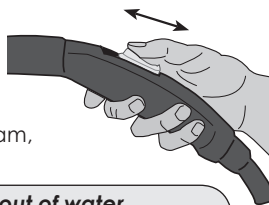
**NOTE: the green Steam Ready Light will turn on and off during use, this is normal and not a fault. There is no need to stop cleaning when the green Steam Ready Light is fluctuating on and off during use.**

Allow approximately 4 minutes for the green Steam Ready Light to turn on.

**NOTE: Do not turn on the Steam Cleaner if Water Tank is empty.**

## 5 Release Steam

To release steam from the Steam Cleaner, slide the trigger found on the Steam Gun forward. Steam will continue to be released while the trigger is in the forward position. To stop the steam, slide the trigger backward.



**IMPORTANT:** When the Steam Cleaner has run out of water, steam output will cease and the Water Fill Light will illuminate red. Follow refill instructions to use your Steam Cleaner again.

### CAUTION

**Always drain condensed water from Hose before use or if appliance has been left idle for a period of time. To drain, direct Nozzle into a sink and slide the trigger on the Steam Gun forward. Once Hose is empty, resume normal use. Never direct nozzle toward people, animals or plants.**

## 6 Auto Shutoff

The Auto Shutoff feature is for safety and to reduce power usage. The Power Switch will begin blinking and an alarm will buzz for one minute when the system detects that the appliance has been on and not in use after 11 minutes. If the appliance is not used, the system will shut off. To turn on the appliance, simply push the Power Switch button.

## 7 Refilling the Water Tank During Use

Use Method A. or B. to refill the Water Tank During Use.

### REMINDERS

- **Use tap water.** If tap water is too hard, distilled or demineralized water should be used to avoid the risk of sediment and mineral build-up in the Boiler.
- Do not add detergents, perfumes, oils or other chemical substances to the Water Tank. This will cause damage to the Steam Cleaner and void the warranty.

### A. Continuous Water Refilling

This model allows for water to be refilled into the Water Tank at anytime while the Steam Cleaner is in use. As the water level in the Water Tank starts to decrease simply add more water while the Steam Cleaner is in use to avoid running out of water.

- Open the Water Tank Cap and insert the Filler Funnel into the Water Tank opening. Using the Measuring Cup pour additional water into the Water Tank to top off. Do not overfill the Water Tank to avoid water spilling on to the floor. Remove the Filler Funnel and close the Water Tank Cap.
- Continue normal cleaning.

**NOTE:** there is no need to turn the Steam Cleaner off while refilling using this method.

## B. Refilling when Water Tank is completely empty

When water in the Water Tank runs out, the Power Switch will begin to flash, the Water Fill Light will illuminate and an alarm will buzz on and off every 2 seconds.

- Switch off the Steam Cleaner by pressing the Power Switch. The orange light on the Power Switch should be turned off.
- Open the Water Tank Cap and insert the Filler Funnel into the Water Tank opening. Using the Measuring Cup pour in a maximum of 1.35 litres of water. Do not over fill the Water Tank to avoid water spilling on to the floor. Remove the Filler Funnel and close the Water Tank Cap.
- Turn on the Steam Cleaner by switching on the Power Switch. The Power Switch will light up orange.
- The Steam Cleaner will heat up, produce steam and the internal Boiler will become pressurised.
- When the green Steam Ready Light turns on, the Steam Cleaner is ready to use.
- Allow approximately 4 minutes for the green Steam Ready Light to turn on.

## 8 Turning Steam Cleaner Off

- To turn Steam Cleaner off, press the Power Switch and unplug the electrical cord from the power outlet.
- Remove the Flexible Hose from the Steam Socket opening on the front of the unit.
- Any remaining water can be left in the unit.

### To Order Replacement Pads and Parts

**Call:** 1800 663 866 (Australia) or 0800 666 783 (NZ), or  
**Visit:** [www.monsterappliances.com.au](http://www.monsterappliances.com.au)

## 9 Using the Iron Attachment

The Iron Attachment can only be used with the Monster Steam Cleaner (model SC4x2). It cannot be used as a stand alone iron. Please remove the plastic film underneath the Iron Attachment and all packaging before using.

**IMPORTANT: MAKE SURE THE STEAM CLEANER IS TURNED OFF BEFORE ATTACHING THE IRON!**

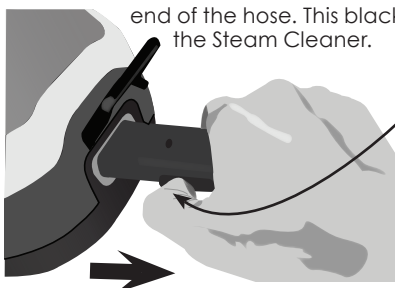


### Professional Sole Plate

A feature of the Ironing Attachment is that it has a professional sole plate similar to commercial style ironing systems. The concentrated steam holes found at the top of the sole plate ensure that the steam penetrates and releases creases faster using the dampness of the steam to moisten the fabric. The large heated area is used to glide over the fabric to dry it out and to set the fabric flat.

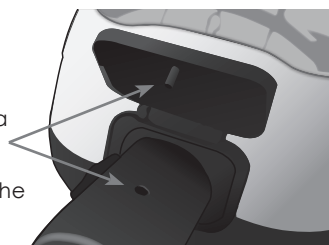
### Connecting the Iron Attachment to the Steam Cleaner

If the Flexible Hose used for steam cleaning is attached to the Steam Cleaner, remove the Flexible Hose. The Iron Attachment has a black plug at the end of the hose. This black plug needs to be inserted into the base of the Steam Cleaner.



Lift up the steam socket lid on the front of the Steam Cleaner. Push the button on the side of the plug back (toward you), and insert the plug into the unit.

Once the plug is firmly inserted in the Steam Cleaner, make sure to lock it in place. There is a small plastic pin on the underside of the steam socket lid that should be inserted into the small hole on the top of the plug. Once the pin is in the hole, the plug is securely in place.



### Heating up the Iron Attachment

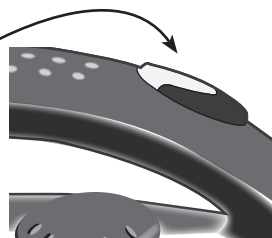
The Iron Attachment operates only when the Steam Cleaner is in operation. To operate the Steam Cleaner follow the "Filling with Water" and "Turning On" instructions in this manual.

The Iron Attachment needs to heat up once the Steam Cleaner is operational. An orange light on the Iron Attachment will turn on. Wait for this light to turn off and then the Iron Attachment is ready to use.

**NOTE: The green Steam Ready Light on the Steam Cleaner and the orange light on the Iron Attachment will turn on and off during use. This is normal and is not considered a fault. There is no need to stop ironing, the lights will fluctuate on and off as necessary.**

## Steam Release

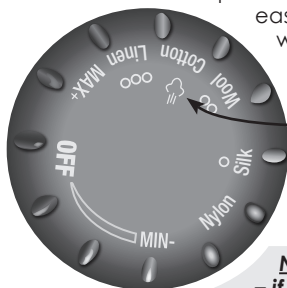
To release steam press and hold the button on the top of the Iron Attachment. The steam can be locked for continuous steam output by sliding the button backward. To unlock slide the button forward to stop the continuous steam output.



**TIP:** to achieve the best ironing results, use steam to moisten the fabric to release the wrinkles and creases, then release the steam button to stop the flow of steam and use the large heated area of the sole plate to dry the fabric and to set the fabric flat.

## Ironing Settings

The benefit of using pressurised steam to iron is that the steam quickly penetrates fabrics to remove wrinkles and creases faster and easier than a normal iron. Ironing with pressurised steam will reduce ironing time and achieve better ironing results.



When ironing with pressurised steam, the dial on the Iron Attachment should be set to the steam setting, – just above the cotton setting on the Iron's dial.

The steam setting on the dial does not need to be changed when ironing with pressurised steam, no matter what fabric type is being ironed.

**NOTE: Ironing without pressurised steam (dry ironing)**

**– if choosing to iron without steam (dry ironing), then the dial on the Iron Attachment will need to be changed depending on the fabric type being ironed. The dial is used to lower the temperature of the sole plate. When dry ironing, a cooler sole plate is needed for delicate garments to avoid scorching the fabric.**

**NOTE:** when dry ironing, steam should not be used because the cooler sole plate may cause the steam to cool down rapidly and recondense into water droplets, causing water spots on clothes.

## Maintenance of the Iron Attachment

The sole plate of the iron should be wiped down with a non-abrasive cloth.

## Customer Support Line

If you have any questions, please call the Monster Customer Support Line.

**Call:** 1800 663 866 (Australia) or 0800 666 783 (NZ), or  
**Visit:** [www.monsterappliances.com.au](http://www.monsterappliances.com.au)

### REMINDERS

- Use tap water.
- If tap water is too hard, distilled or demineralized water should be used to avoid the risk of sediment and mineral build-up in the Boiler.
- Do not add detergents, perfumes, oils or other chemical substances to the Water Tank. This will cause damage to the Steam Cleaner and void the warranty.

## 10 Decal System - Cleaning the Steam Cleaner

The Decal System alerts the user that the Boiler needs to be cleaned/ decalcified. When your steamer has been used for 11.5 hours, the "Decal System" button light will flash. Let the unit cool, remove the Water Release Cap (found underneath the Steam Cleaner) to empty the water, and clean the Boiler.

- Fill the Boiler with HOT water, shake several times and empty out the water in a sink. Repeat several times to ensure that the Boiler is flushed of any calcium or mineral deposits. Wipe the Steam Cleaner with a damp cloth and dry.
- In areas with very hard water, use a Hard Water Mineral Remover (found in most hardware or small appliance stores), and follow the manufacturer's instructions.
- Once cleaning is complete, replace Water Release Cap.
- To reset the timer and switch off the Decal System lamp, push the reset button and hold for 5 seconds.

***The Water Release Cap should NEVER be opened while the Steam Cleaner is in use, while there is steam and pressure in the Boiler or while the Steam Cleaner is still hot. The Water Release Cap should only be opened when the Steam Cleaner is completely cool.***

**NEVER HOLD THE STEAM CLEANER UNDER THE TAP TO FILL. Use the Filler Funnel provided to fill the Water Tank.**

**The cleaning of the Boiler and Steamer is the sole responsibility of the appliance owner. Calcium, mineral deposits and other sediments left to build up in the Steam Cleaner causing it to fail and/or the steam pathways in the Steam Cleaner to block, is not covered by the product warranty. Users must follow the cleaning instructions above.**

If the Steam Cleaner and Boiler is not cleaned according to the instructions above and the product fails and/or the steam pathways are blocked, the appliance owner should send the product for servicing by contacting the Customer Support Line.

**The Steam Cleaner is intended for domestic household use only. It is not intended for commercial use. Any use other than for domestic household purposes will void the product warranty.**

## 11 Replacement of Brushes, Microfibre Pads and Accessories

The Nylon and Brass Detail Brushes and the Microfibre Pad for the Small Brush and Floor Brush provided with the Steam Cleaner are to get you started using your Monster Steam Cleaner. As these brushes and microfibre pads become dirty or wear out, replacement brushes and microfibre pads can be purchased from the retailer from which you purchased your Steam Cleaner and/or from most other electrical appliance retail outlets or visit [www.monsterappliances.com.au](http://www.monsterappliances.com.au).

It is normal to have replacements of the brushes and microfibre pads close at hand when doing cleaning as the brushes wear out or the microfibre pads become dirty.

Any of the other accessory tools are replaceable by contacting the Monster Customer Support Line. (See phone numbers on the back cover of this manual.)



## 12 Steam Cleaner Tips & Reminders

This steam cleaning appliance has many practical uses that have not been mentioned in this manual. Please refer to the Cleaning Reference Guild included with this manual for tips and suggestions of where and how to use the Steam Cleaner. Alternatively visit the website at [www.monsterappliances.com.au](http://www.monsterappliances.com.au) for additional information or contact our Customer Support Line for assistance.

Steam cleaning allows the user to clean chemical-free by using the power of steam, in place of harsh chemical-based detergents. The heat from the steam softens and loosens dirt on surfaces, while the steam pressure lifts the dirt away. All that is left to do is to wipe the surface to remove the dirt and moisture using a microfibre cloth or a cleaning cloth if the surface is soiled or greasy.

***TIP: to get the best cleaning results use a microfibre cloth to wipe the dirt and moisture from the surface being cleaned. Microfibre is designed to pick up and hold dirt, a great aid in lifting and removing the dirt that the steam cleaner has softened and loosened. Also, Microfibre requires moisture to glide over surfaces, the steam cleaner provides moisture that the Microfibre needs to glide. Microfibre and Steam, a great cleaning combination!***

### Making Contact with Surfaces

The steam is at its hottest just as it leaves the nozzle/accessory. This is the area of the steam output that should be used to clean to achieve maximum performance. All accessories should make direct contact with the surfaces being cleaned to transfer the heat from the Steam Cleaner to the surface in order to soften and loosen dirt. If the accessory being used does not make contact with the surface, the desired results may not be achieved. If assistance is required contact our Customer Support Line.

***TIP: steam will clean hard, sealed, non-porous surfaces in place of harsh chemical-based cleaners and detergents. For soft furnishings such as carpets, rugs, lounges, children's toys etc, steam will refresh and deodorise the fibres. Steam is not used to clean carpets, other than to spot clean. To clean carpets proper carpet cleaning equipment should be used.***

### Water

Use ordinary tap water for all cleaning. In hard water areas, we recommend distilled or demineralised water to reduce the formation of calcium and other mineral deposits in the Steam Cleaner. Use distilled or demineralised water when steaming light coloured fabrics to eliminate the possibility of hard water stains.

***IMPORTANT: Do not add cleaning solutions, perfumes, oils or any other chemicals to the water used in the Water Tank. This will damage the Steam Cleaner and void the warranty.***

### Temperature

The temperature in the internal stainless steel Boiler reaches about 130°C. The steam temperature just outside the tip of the nozzle/accessory is between 105°C and 115°C. The temperature of the steam falls to 38°C at a distance of 25cm from nozzle. This Steam Cleaner produces a drier steam which cools very rapidly to avoid burns and injuries. Steam must make direct contact with surfaces for it to clean effectively.

***TIP: the hot steam can be used to kill dust mites in soft furnishings and mattresses. Steam cleaning is ideal for asthma sufferers, persons with skin sensitivities and anyone with chemical sensitivities.***

This image shows a single sheet of white paper with horizontal ruling lines. The lines are evenly spaced and run across the width of the page. There are no margins, text, or other markings on the paper.

[illegible]

### **Customer Support**

Customers needing assistance with their Monster Steam Cleaner can call the Customer Support Line on the phone numbers listed below. Customers should also call the Customer Support Line if they require product warranty repair or post-warranty product servicing. Our friendly Customer Service Team can assist you to get the best cleaning results from your Steam Cleaner, they are full of helpful steam cleaning tips, too.

### **Monster Customer Support Line**

**AUSTRALIA** 1800 663 866

**NEW ZEALAND** 0800 666 783

#### **Monster Appliances (Australia)**

8 Success Way  
WANGARA WA 6065  
AUSTRALIA

TEL: 08 9302 2526

Email: [admin@monsterappliances.com.au](mailto:admin@monsterappliances.com.au)

Website: [www.monsterappliances.com.au](http://www.monsterappliances.com.au)

#### **Euroflex New Zealand Ltd**

PO BOX 305 650  
Triton Plaza  
North Shore 0757  
NEW ZEALAND

TEL: 0800 666 783

Email: [admin@monsterappliances.com.au](mailto:admin@monsterappliances.com.au)

Website: [www.monsterappliances.com.au](http://www.monsterappliances.com.au)

#### **Euroflex SRL**

Via dei Colli, 153  
31058 Susegana (TV)  
ITALY

Tel: +39 0438 661711

Email: [euroflex@euroflex.tv](mailto:euroflex@euroflex.tv)

Website: [www.euroflex.tv](http://www.euroflex.tv)

