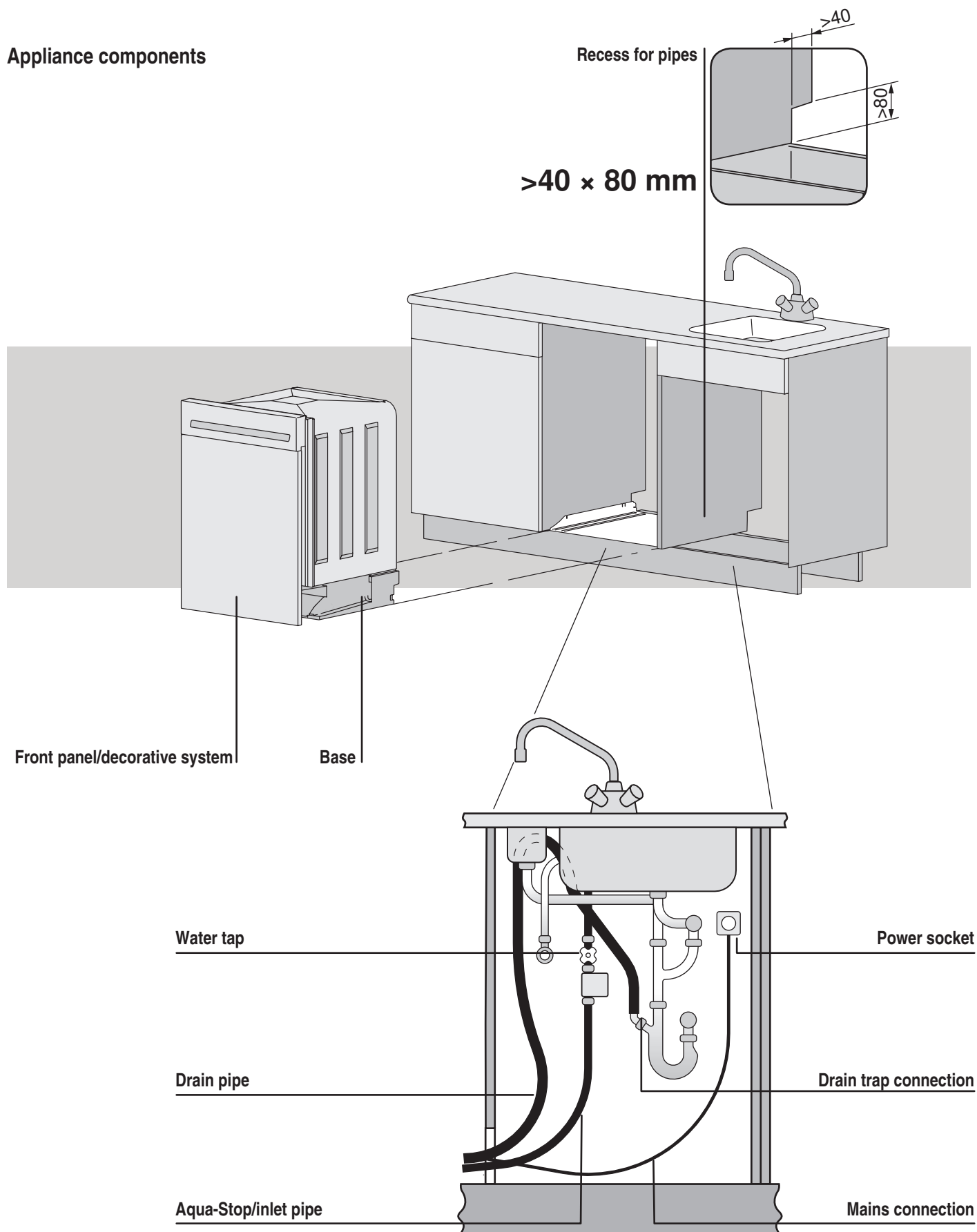




Before installation, please read the safety precautions on the reverse side!

Appliance components



**EN Safety precautions**

Only move unpacked appliances using gloves. Do not lift appliance when on the plinth.



Do not press on the sides or top of the appliance.



Do not tip appliance over.



Any old water supply and drain pipes must always be replaced with new ones.



Always observe the local water supply authority's regulations.



Extending the water supply and drain pipes and mains cable is not permitted. Consult customer services if you want to make alterations like this. Ventilation outlets in the base must be kept free and not be obstructed (e.g. by carpet).



Electrical connections must be made by trained electricians in accordance with the guidelines and standards for low voltage installations and the specifications of the local electricity supply companies. A plug-in appliance may only be connected to a socket outlet with earthing contact, installed according to specifications. An all-pole mains isolating device with 3 mm contact opening should be provided in the house wiring system. Switches, plug and socket devices, circuit breakers and fusible cut-outs which are accessible after installation and which have all-poles switching are permissible as isolating devices. Effective earthing and separately installed neutral and earth conductors ensure safe and fault-free operation. After installation, live parts and cables with basic insulation must not be accessible. Old installations should always be checked. Refer to the identification plate for specifications for the required mains voltage, current type and fuses. Application height of the appliance: up to max. 2000 m above sea level.





Water/electrical connection

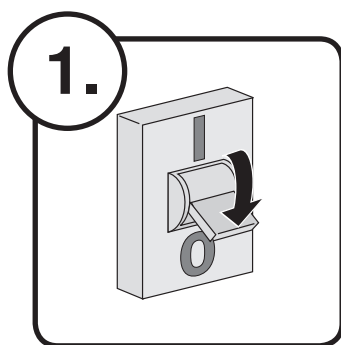
Water inlet **<60 °C**

Working pressure **1–10 bar**
0,1–1 MPa

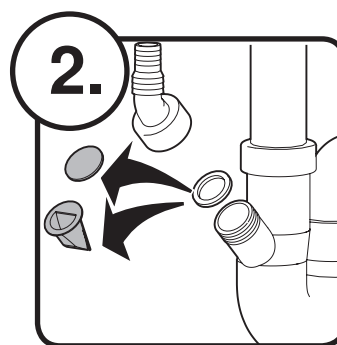
Inlet pipe, Aqua-Stop **1,5 m**
G³/₄"

Water outlet pipe **1,6 m**
Ø 22 mm

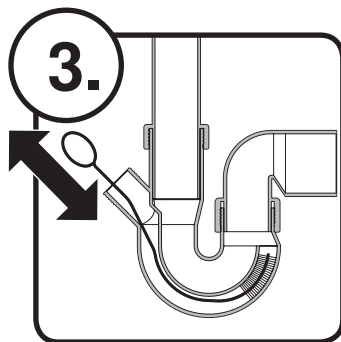
Minimum ambient temperature **+5 °C**



Disconnect feeder

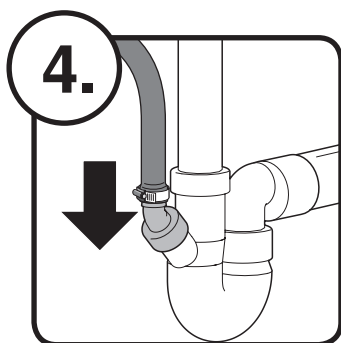


If available:
Remove Dummy and the non-return valve

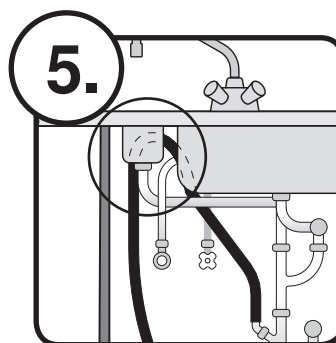


Clean drain trap. E.g. with flexible brush

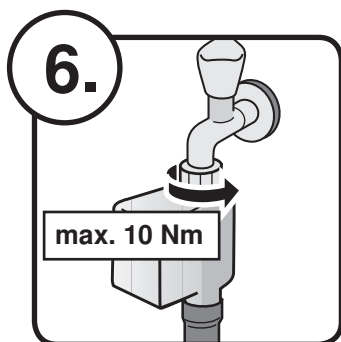




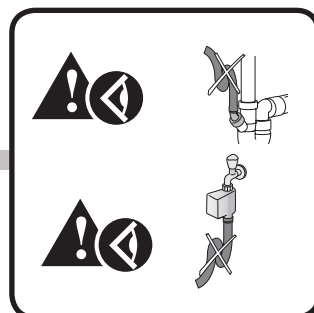
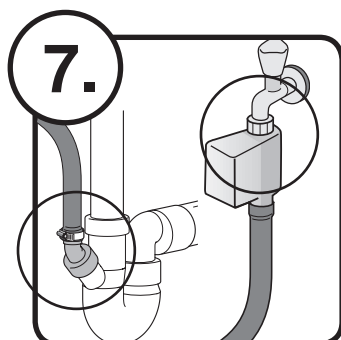
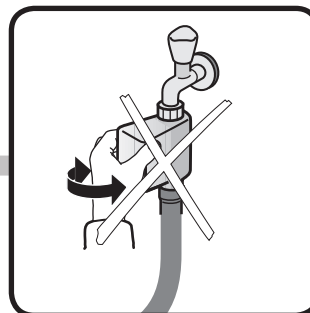
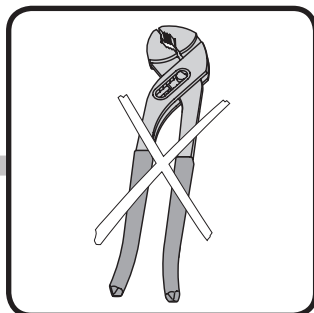
Connect drain hose with drain trap
Fix drain hose with clamp



Fix drain hose at the top with assembly set

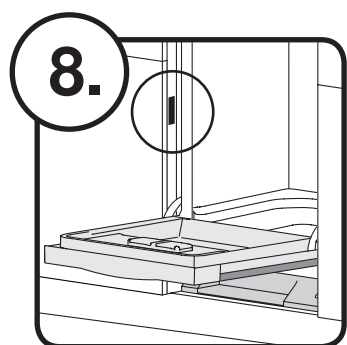


Connect Aqua-Stop onto the tap
Internal diameter of connection lead min. 18 mm
For water pressure at <1 bar: Set to «low water pressure» according to service documents

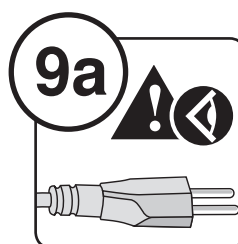


Check the connection for leaks. Do not bend drain hose and the inlet hose

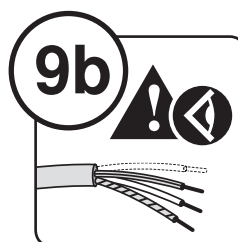




Check connection values.
The building connection must match the information on the identification plate.



Plug in



Connect up to building supply

Connection values:

L1 brown

L2 black

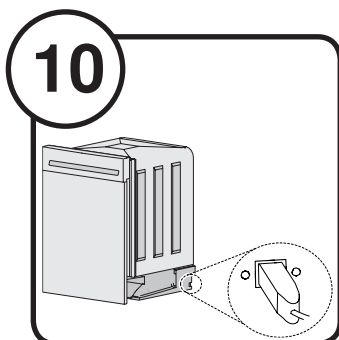
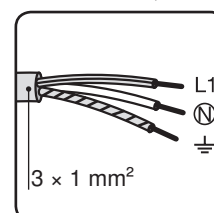
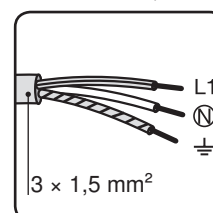
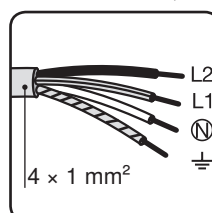
400 V 2N~ 50 Hz, 10 A

230 V~ 50 Hz, 16 A

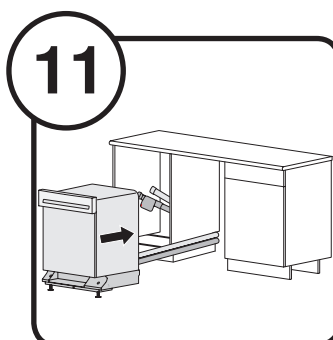
230 V~ 50 Hz, 10 A

N blue

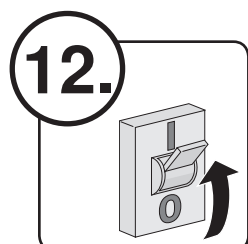
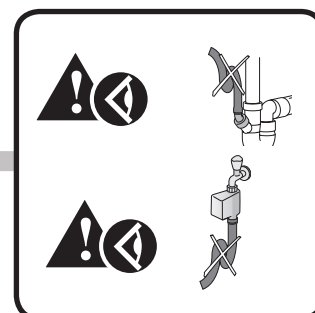
PE yellow/green



If available: Connect V-ZUG-Home



Tighten hoses and cables
Do not bend drain hose and the inlet hose



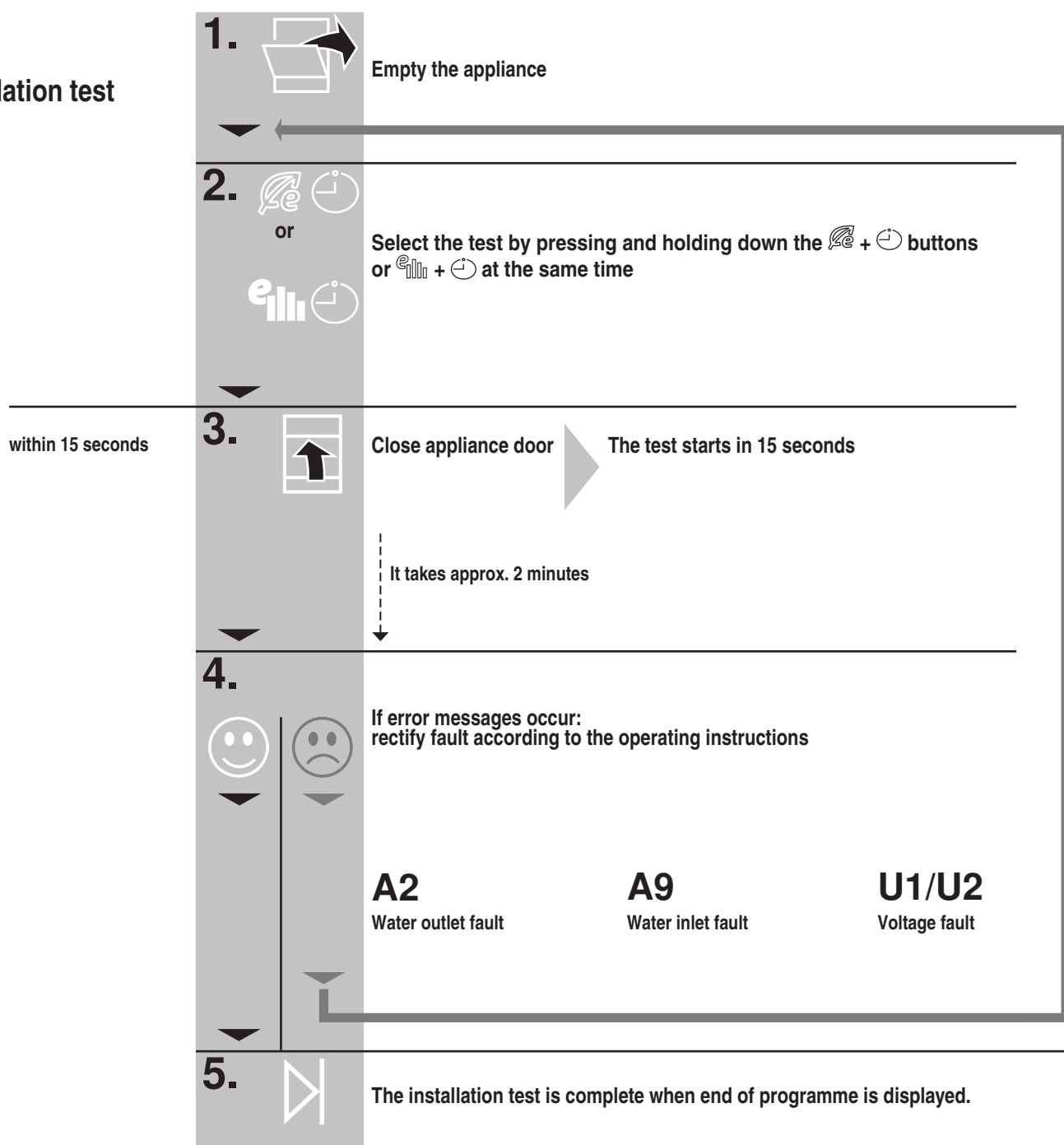
Connect feeder again

13. Installation test





Installation test



1. Initial set-up

- 1.** Set the water hardness according to the «Using for the first time» section (see operating instructions)
- 2.** Carry out the remaining work steps for the initial set-up

OK!

Appliance is ready for operation

