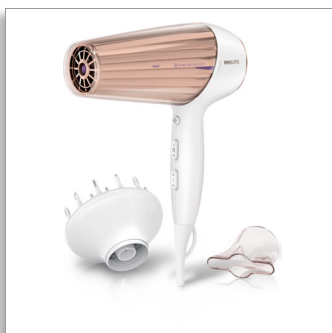




Philips MoistureProtect
Hairdryer

MoistureProtect Sensor
2300W
Ionic conditioning
Cool shot



HP8280/00

Lock your moisture in for shiny happy hair

Ultimate moisture retention, best shine & softness

The unique SenselQ™ hairdryers have built-in intelligent sensors that protect the hair from the inside out. The MoistureProtect infrared sensor continuously measures and adjusts the hair's temperature for up to 85% moisture preservation.*

MoistureProtect technology

- MoistureProtect Sensor
- Perfect moisture protection with exclusive sensor

Caring technology

- Protection from overheating

Beautifully styled hair

- Ionic conditioning prevents static for frizz free shiny hair

Ease of use

- Six speed and heat settings for perfect control
- Cool Shot to set your style

PHILIPS

Highlights

MoistureProtect Sensor



The truly innovative Infrared MoistureProtect technology continuously monitors and adapts the drying temperature to match your hair's drying needs. The intelligent sensor measures your hair's surface temperature 4000 times in one drying session, and adjusts the heat to prevent moisture loss and cuticle damage. With ultimate moisture retention, your hair gets our best shine and softness. You can switch on/off the sensor upon your needs.

MoistureProtect technology



Uses infrared technology to diagnose your hair and adapts the temperature to preserve its natural hydration.

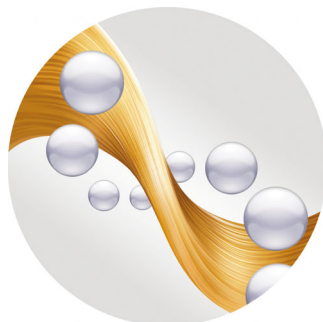
ThermoProtect temperature



The ThermoProtect temperature provides the optimal drying temperature and gives additional protection from overheating the hair. With the same

powerful airflow, you can get the best results in a caring way.

Ionic conditioning



Charged negative ions eliminate static, condition the hair and smooth down the hair cuticles to intensify the hair's shine and glossiness. The result is hair that is smooth, shiny and frizz-free.

Six speed and heat settings



Easily set and control the heat and speed settings to create the perfect style. Choose from 3 heat and 2 speed settings for full control and precise drying and styling.

Cool Shot



The Cool Shot button provides an intense burst of cool air. It is used after styling to finish and set the style.

Specifications

Technical specifications

- Voltage: 220-240 V
- Wattage: 2100-2300 W
- Cord length: 2.5 m
- Motor: DC
- Dual Voltage: No

Caring technologies

- MoistureProtect technology
- Ionic Care

Service

- 2-year worldwide guarantee

Features

- Cool Shot
- 6 temperature settings

Accessories

- Nozzle: Diffuser

