



U4020

SIERRA BAGLESS

Instruction Manual



U4020



IMPORTANT SAFETY INSTRUCTIONS

IMPORTANT SAFETY INSTRUCTIONS READ ALL INSTRUCTIONS BEFORE USING (THIS APPLIANCE)

When using an electrical appliance basic precautions should always be followed, including the following. Before connecting the cleaner to an electrical supply outlet, ensure that the voltage marked on the rating plate (on the underside of the cleaner) is correct for your electrical supply. If it does not comply, do not use the cleaner prior to contacting the manufacturer.

WARNING – To reduce the risk of fire, electric shock, or injury:

1. Do not leave vacuum cleaner when plugged in. Unplug from outlet when not in use and before servicing.
2. To reduce the risk of electric shock, do not use outdoors or on wet surfaces.
3. This appliance is not intended for use by persons (including children) with reduced physical, sensory or mental capabilities, or lack of experience and knowledge, unless they have been given supervision or instruction concerning use of the appliance by a person responsible for their safety. Children should be supervised to ensure that they do not play with the appliance.
4. Use only as described in this manual. Use only manufactures recommended attachments.
5. Do not use with damaged cord or plug. If vacuum cleaner is not working as it should, has been dropped, damaged, left outdoors, or dropped in water, take it to a service centre before using.
6. Do not pull or carry on cord or use as a handle. Do not close door on cord, or pull around sharp edges or corners. Do not run vacuum cleaner over cord. Keep cord away from heated surfaces.
7. Do not unplug by pulling on the cord. To unplug, grasp the plug, not the cord.
8. Do not handle the plug or vacuum cleaner with wet hands.
9. Keep hair, loose clothing, fingers and all parts of body away from openings and moving parts.
10. Turn all controls off before unplugging.
11. Do not use to pick up flammable or combustible liquids, such as gasoline, or use in areas where they may be present.
12. Do not pick up anything that is burning or smoking, such as cigarettes, matches, or hot ashes.
13. Do not use without dust bag and/or filter in place.
14. Do not use extension cords or outlets with inadequate current carrying capacity.
15. We recommend you do not use your vacuum on carpet cleaning foams, sharp or heavy building materials or plaster dust. They could damage or clog the dustbag and cause failures to other key parts in your vacuum cleaner and render your warranty invalid.
16. Store your cleaner indoors in a cool, dry area.
17. Unplug electrical appliances before vacuuming them.
18. Please remove the plug from the socket outlet before cleaning or maintaining this appliance.
19. If the power cord is damaged, it must be replaced by the manufacturer, its service agent or similarly qualified person in order to avoid a hazard.

SERVICE & REPAIR

It is dangerous to alter the specifications or modify the product in any way. Under no circumstances should you attempt to repair the cleaner yourself.

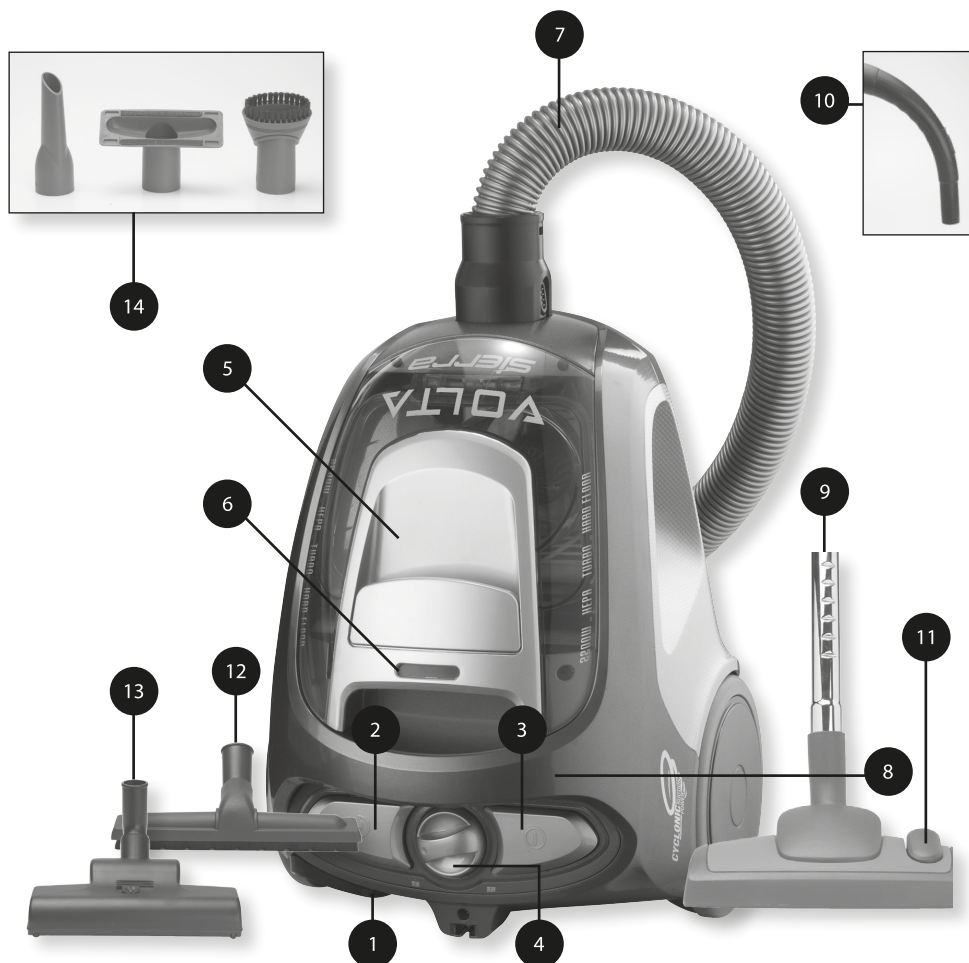
NB! To avoid injury and prevent damage to the vacuum cleaner a defective cord must only be replaced by an authorised service provider approved by the manufacturer to avoid a hazard. The vacuum cleaner should be serviced by an authorised service provider and only genuine Volta spare parts should be used.

Double Insulation

Your vacuum cleaner is double insulated. This means that all external parts are electrically insulated from the mains. This is done by placing insulation barriers between the electrical and mechanical components, making it unnecessary for the cleaner to be earthed.

WARNING: On collection of proprietary carpet conditioning powder, it is recommended that the dust container is emptied and the cartridge filter is cleaned after each use. Some of the preparations contain substances which if left in the vacuum cleaner for extended periods, could cause damage. Many air fresheners, household deodorants, sprays and polishes contain highly inflammable gas propellants, because of this it is particularly important that these products are used strictly in accordance with the relevant manufacturers instructions, it is essential that none of the above products are sprayed directly into the vacuum cleaner or any of the filters, hose assembly or dust chamber.

PARTS IDENTIFICATION



- | | |
|-----------------------------|--|
| 1. Power cable | 9. Telescopic tube |
| 2. Cable rewind button | 10. Hose handle with slide valve |
| 3. On/off button | 11. Combination carpet/
hard floor nozzle |
| 4. Variable Suction control | 12. Hard floor nozzle |
| 5. Dust container | 13. Turbo pet hair nozzle |
| 6. Filter indicator | 14. Upholstery nozzle, Crevice nozzle
and Dusting brush |
| 7. Hose assembly | |
| 8. Carry handle | |

ASSEMBLING THE VACUUM CLEANER

GETTING STARTED, ASSEMBLING YOUR VOLTA

1. Check the dust container is in place.



2. To connect the hose into the suction inlet push it until it clicks.

To disconnect the hose from the suction inlet, push the button at the end of the hose and pull away from the cleaner.



3. Attach the telescopic tube to the hose handle and floor nozzle by pushing and twisting together. Twist and pull apart to dismantle.



4. Extend the cable and connect to mains power. The cleaner is fitted with a cord, always rewind and ensure the cord is not twisted before use. (Press foot pedal to rewind. Note: Please hold the plug to prevent it striking you or the machine).



Filter indicator: before commencing cleaning, plug the cleaner in and turn it on (without the hose attached to the cleaner).

If the indicator is red, clean the filter.

If the indicator is clear, attach the hose and all other necessary attachments and commence cleaning.

5. Press the On/Off button to activate the cleaner.



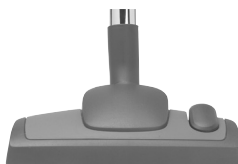
6. By moving the variable power control, the suction power can be adjusted. Suction can also be regulated on the hose handle by opening/closing the slide valve.



GETTING THE BEST CLEANING RESULTS

Your Volta is equipped with a number of different nozzles and accessories. Read below to learn more.

Combination floor nozzle



Ideal for cleaning carpets and all hard floor types. For cleaning carpets, the brush strip should be in the retracted position. To retract the brush strip, press the pedal on the top of the nozzle.

For cleaning hard floors, release the pedal to lower the brush strip for soft cleaning.

Hard floor nozzle



Use the hard floor nozzle for larger hard floor areas to ensure gentle, scratch free cleaning.

INSTRUCTIONS FOR USE / MAINTENANCE

Turbo Nozzle



The turbo nozzle features an air-driven brush roll, which makes it ideal for efficient carpet cleaning, particularly for removing pet hair.

Small accessories:



Crevice nozzle

Best used for cleaning in corners, between furniture and tight spaces.

Upholstery nozzle

Ideal for loose fabrics, curtains and upholstery, this nozzle is ideal for cleaning fabrics.

Dusting brush

For cleaning of hard surfaces such as table tops, benches and shelves.

Important maintenance tips

Your Volta is designed to provide efficient cleaning performance. Be sure to follow the below simple steps to ensure you get the best performance possible for years to come.

EMPTYING THE DUST CONTAINER

Always operate the cleaner with the dust container properly installed.

1. Lift the dust container from the cleaner body.



2. Open the dust container by pressing on the button marked 'push' and lifting the lid away from the container.



3. Empty the content of the dust container into a dust bin. Note that some councils require this content to be emptied into a plastic bag that is sealed when collected.



4. Hook the hinges on the front of the lid in place and lower the lid down upon the dust container until it clicks into place.



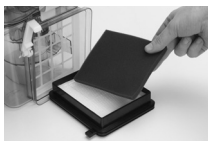
5. Replace the dust container by dropping back into the cleaner body until it clicks into place. Note that the dust container will not fit if the HEPA filter is not fitted correctly.

MAINTENANCE

REPLACING & CLEANING THE MAIN HEPA FILTER

The HEPA filter should be inspected every two months, and cleaned when visibly dirty, or replaced if damaged. This will help ensure the best possible performance from your Volta.

1. Remove the dust container from the vacuum cleaner and pull on the tab to remove the filter. Note there is a sponge protection filter in front of the HEPA filter, pull this filter away from the HEPA filter frame.



2. Cover the HEPA filter with a sheet of paper with the frame facing up and tap it against a hard surface. This will help to dislodge excessive dust and dirt from the filter.
3. If necessary, the HEPA filter can be rinsed under a tap using lukewarm water. Always rinse the filter with the frame facing down and never use cleaning chemicals. Never scrub or brush the filter. Rinse the sponge protection filter under tap water.



4. Air-dry both the HEPA and sponge protection filters for 24 hours, away from direct sunlight before reusing it. If the filter appears damaged it is recommended to replace with a new filter. To purchase new filters contact Electrolux customer service on 1300 365 305 (AUS) or 0508 730 730 (NZ).



REPLACING & CLEANING THE MICRO-EXHAUST FILTER

The micro-exhaust filter should be inspected twice a year, and cleaned when visibly dirty, or replaced if damaged.

1. To remove the micro-exhaust filter, remove the exhaust grill, and lift the filter frame out of the cleaner.



2. Like the HEPA filter, the micro-exhaust filter can be rinsed under tap water. Be sure to let it dry completely before use. If the filter is damaged discard it and replace with a new one.

MAINTENANCE / TROUBLE SHOOTING

WARNING: On collection of proprietary carpet conditioning powders, plaster/concrete dust, it is recommended that the dust container is emptied and the cartridge filter is cleaned after every use. Some of the preparations contain substances which while left in the vacuum cleaner for extended periods could create damage.

Many air fresheners, household deodorants, sprays and polishes contain highly inflammable gas propellants. Because of this it is particularly important that these products are used strictly in accordance with the relevant manufacturers instructions. It is essential that none of the above products are sprayed directly into the vacuum cleaner or any of the filters, hose assembly or dust chamber.

TROUBLE SHOOTING AND CUSTOMER INFORMATION

You can perform your own troubleshooting at home based on the checklist given below. However, if the problem persists, please contact Electrolux on 1300 365 305 (AUS) or 0508 730 730 (NZ)

PROBLEM	POSSIBLE CAUSES	CORRECTIONS
Vacuum cleaner does not start.	Plug is not properly connected to the socket.	Check the plug connection or try another socket.
	Thermal protector activated due to high temperature.	Press the On/Off button and wait 20-30 minutes for the motor to cool down.
Filter indicator light stays on.	Dust container is full.	Empty the dust container.
	Filters are clogged.	Clean or replace filters.
Reduction of suction capacity.	Suction hose is blocked.	Clean the hose.
	Nozzle is blocked.	Clean the nozzle.
	Dust container is full.	Empty the dust container.
	Filters are clogged.	Clean or replace filters.
	Hose is damaged or broken.	Change the hose.
Over-heating.	Dust container is full.	Empty the dust container.
	Filters are clogged.	Clean or replace filters.



KEEP THIS FOR YOUR RECORDS

To be completed by the Purchaser

Model

Serial No

Date of Purchase

Retailers Name

Retailers Address

.....

City State

Attach Your Purchase Receipt Here

Electrolux Small Appliances

Electrolux Pty Ltd ACN 000 015 136

57 - 63 Fairchild Street, Heatherton, VIC 3202, Australia

Ph: (03) 8581 7300 Customer Service - Ph: 1300 365 305

www.electrolux.com.au

Electrolux Small Appliances

A division of Electrolux (NZ) Limited

3 - 5 Niall Burgess Road, Mt. Wellington, Auckland, New Zealand

Ph: (09) 9573 2220 Customer Service - Ph: 0508 730 730

www.electrolux.co.nz

*Some models may be limited in availability or be available from certain stores only. Not all models and specifications are available at time of printing and not all models are available in NZ.

See your local Volta retailer or call the above phone numbers for further information if required.

*Due to the Electrolux policy of continual product development; specifications, colours and details of our products and those mentioned in this manual are subject to change without notice.

 *From the Electrolux Group.*

Publication 07/2012

