



HOSHIZAKI

DCM-120KE-P

Ice & Water Dispenser

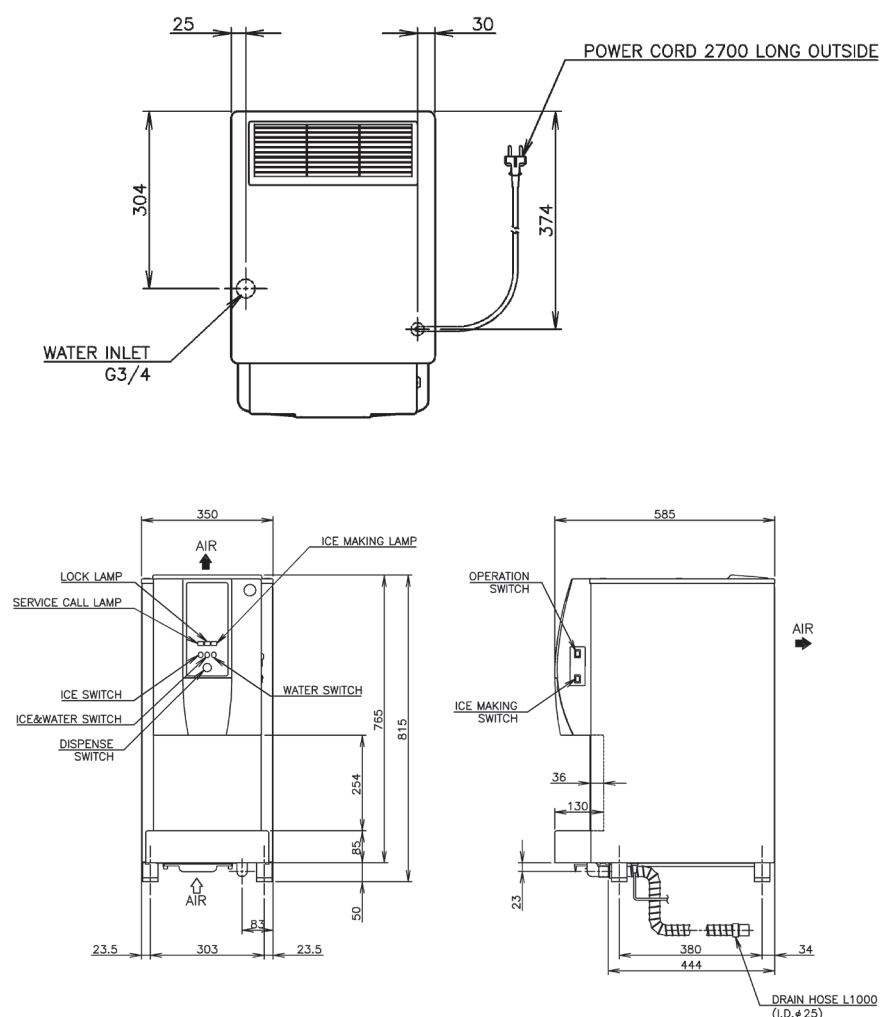
PRODUCT FEATURES

- Premium Cubelet ice
- Smooth ice dispense
- No ice bridging
- Robust and reliable
- Sanitary self-service application
- Easy operation - Push button; dispense ice directly in to container greatly reducing risk of contamination
- Dispenses ice only, water only or ice and water
- Adjustable portion controlled dispensing
- Due to Auger system water consumption is equal to ice production.
- 2 year parts & labour on entire unit, 5 year (parts only) on compressor & air cooled condenser coil

SHAPE OF ICE:



TECHNICAL DRAWING



DCM-120KE-P

PRODUCT SPECIFICATION

| | |
|---------------------------------|---|
| Production Capacity per 24hours | Approx. 125kg @10°C Air temp; 10°C Water Approx. 105kg @ 21°C Air temp; 15°C water Approx. 85kg @ 32°C Air temp; 21°C water |
| Max Storage Capacity | Approx. 4kg |
| Dimensions | 350mm (W) x 585mm (D) x 815(~830)mm (H) |
| Cooling | Air |
| Weight Net/Gross (kg) | 57 / 66 |
| AC Supply Voltage | 1 PHASE 220 - 240 / 220 - 230V 50 / 60Hz |
| Amperage | Rated:2.8 / 2.7 A Starting: 12.6 A |
| Refrigerant Charge | R134a |
| Operating Conditions | Ambient Temp.: 5-40°C Water Supply Temp.: 5-35°C Water Supply Pressure: 0.07-0.8MPa Voltage Range: Rated Voltage ±6% |