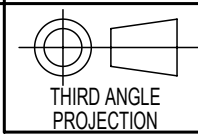


| Table - Zip BOM (Assembly) | | | | | | |
|----------------------------|-----------|-----|---|---------|------------------------|-----|
| Item | Part | Rev | Description | Config | Status | Qty |
| 1 | 800544-CS | 00 | Tap Assy Commercial - Chilled Sparkling HydroTap G4 | Default | Design | 1 |
| 11 | 802084 | A04 | "Y" Connector JG 1/4" | Default | Pending Pre-Production | 1 |
| 12 | 800221 | C | Air Inlet Grill CFF | Default | Production | 1 |
| 13 | 800349 | A | 1.2kg CO2 Cylinder Assy | Default | Production | 1 |
| 17 | 83393 | A13 | Ventilation Grille Hafele | Default | Pending Pre-Production | 1 |
| 18 | 0056AU | 00 | HydroTap G4 Residential CS Base Module Upgraded 2016 w/ IEC | Default | Design | 1 |
| 19 | A2672 | 01 | IEC Female Plug | Default | Pending Pre-Production | 1 |



THIRD ANGLE
PROJECTION

Dimensions in
millimetres

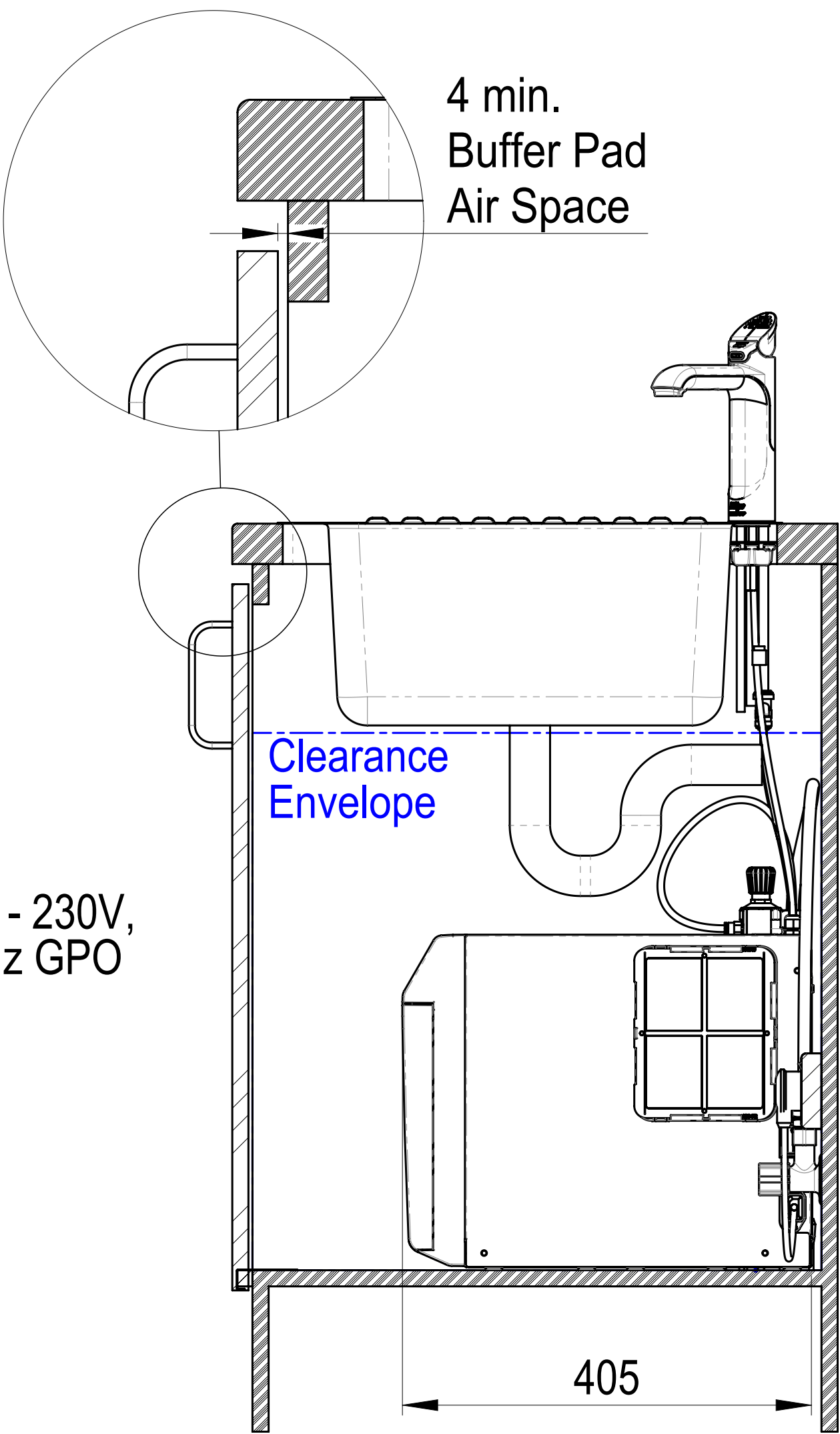
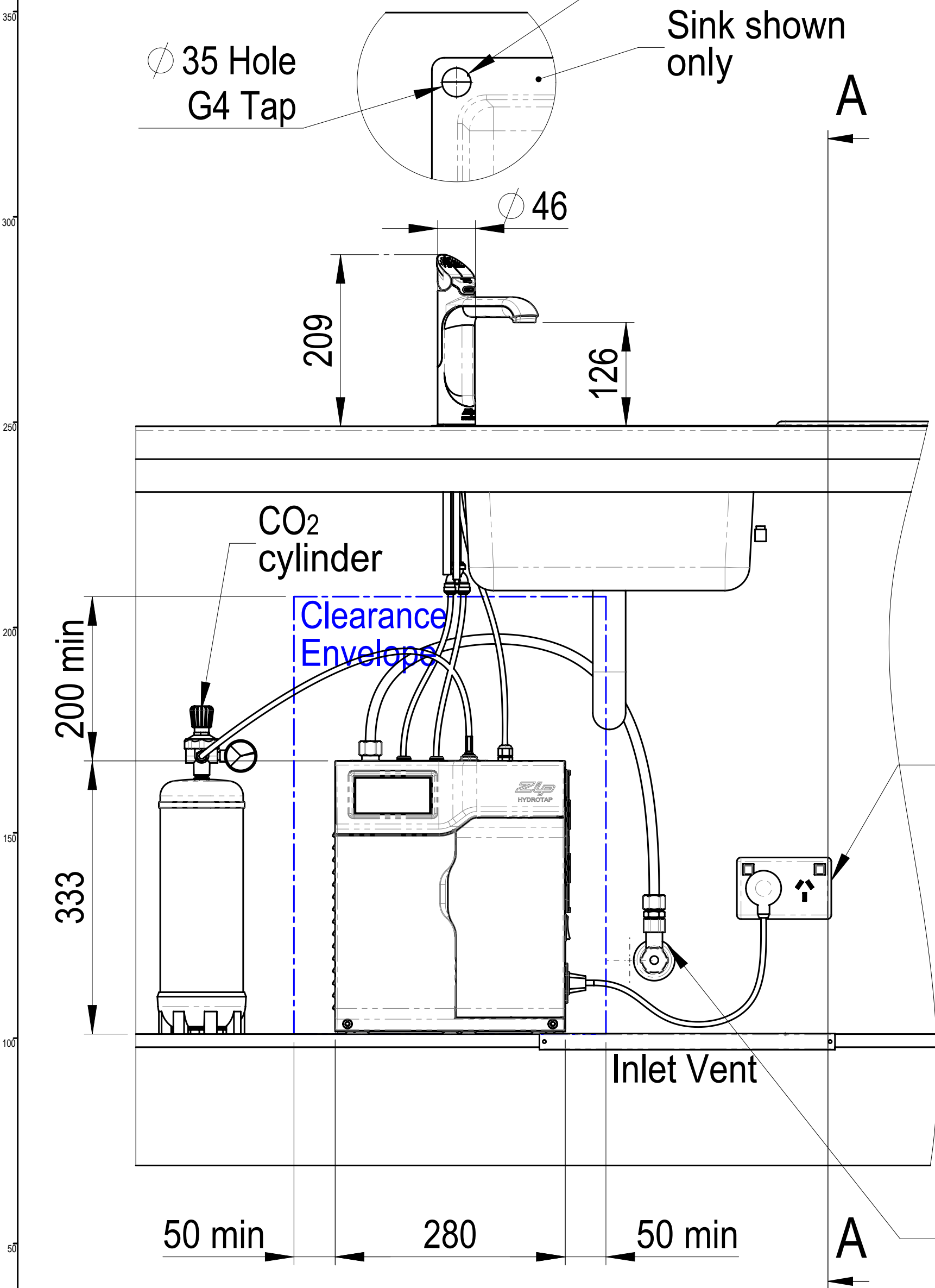
Drawing to
BS8888:2004

Screw threads to
BS 8498:2008

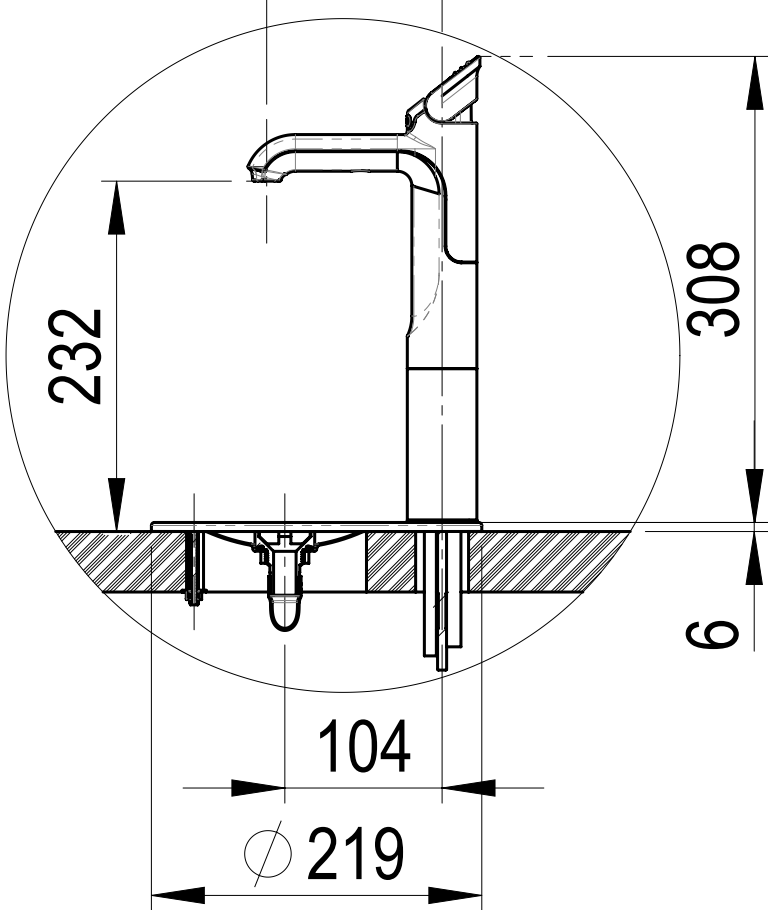
Zip Industries Pty Ltd
67 Allingham Street
Condell Park
Sydney
NSW 2200
Australia

Web : www.zipindustries.com
Email : sales@zipindustries.com

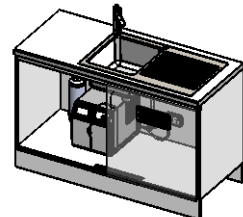
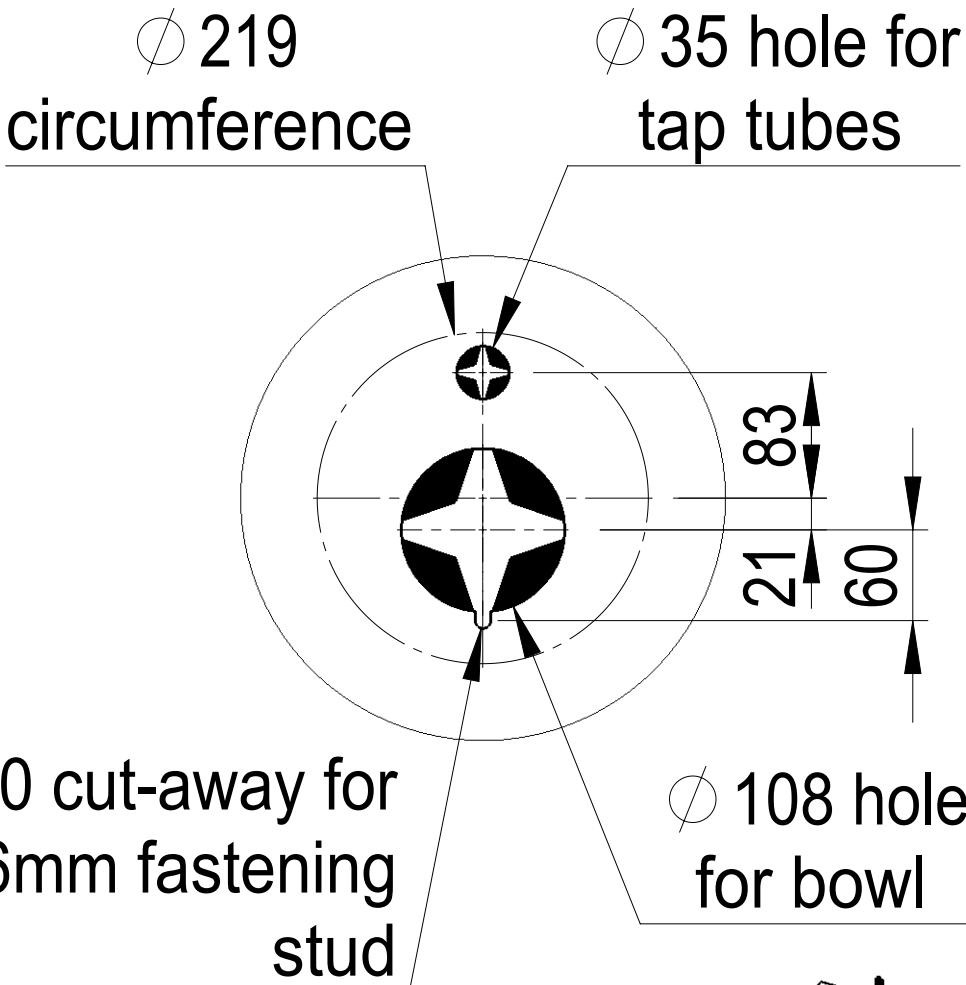
Position the Tap such that it dispenses into the sink bowl with ample clearance for a cup or a tea pot. Alternatively, the Tap could be mounted away from the sink using a Zip Font available as an accessory.



116 CL reach



DETAIL FONT
SCALE 1 : 5



Configuration : Default

SECTION A-A
SCALE 1 : 5

WMKA 00099; CS8328
Watermark Exp: 26-10-2017; CS Exp: 18-8-2014

| | | | | | | | |
|---|--|---|--|--|--|--|--|
| This drawing is CONFIDENTIAL and is supplied on the express condition that it shall not be LOANED, COPIED or DISCLOSED to any other third party or used for any purpose without the written consent of Zip Industries Pty Ltd. If this document is printed in hardcopy form, it is for INFORMATION ONLY and therefore not subject to updating controls. For the current revision ALWAYS refer to the NATIVE electronic form as stated in the top left-hand corner of this sheet. © copyright Zip Industries Pty Ltd, 16/05/2011 | | | | Zip Industries <i>Zip</i> | | | |
| Manufacturing Instructions | | Approved by : nickm on 11/11/2014 | | Description : | | | |
| Make or Buy : Buy | | Checked by : edgar on 18/04/2016 | | Assy - Kitchen Layout (HydroTap G4 Residential Chilled Sparkling Unit & G4 Tap Upgraded) | | | |
| Manufacturing Route : Manufacturing Process | | Updated by : edgar on 18/04/2016 3:08:14 PM | | Project : Hydrotap G4® | | | |
| Raw material : See Components | | Material : See Components | | Configuration : Default | | | |
| Remove all sharp edges. This drawing ONLY details information which cannot be ascertained from the 3D geometry of the part(s) attached. Model & dimensions are AFTER all finishing operations | | Finish : Finish | | Created by & on | | | |
| Comments : Larger Compressor & Carbonator | | Finish : Finish | | EdgarG on 4/05/2011 | | | |
| Volume (mm3) : 78600.0 | | Area (mm2) : 134043.1 | | Derived from : New | | | |
| Mass (g) : 86413.8 | | Density (g/mm3) : 1.1 | | Scale : 1:1 | | | |
| Potable? : No | | Recyclable? : No | | Sheet : 1 of 1 | | | |
| Colour : Colourless | | Status : Pending Pre-Production | | Created by & on | | | |
| Drawing Property | | Part Property | | EdgarG on 16/05/2011 | | | |
| Size | | Rev | | 01 | | | |
| A2 | | Part | | Property | | | |