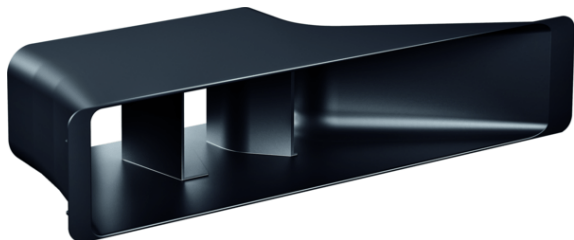


## installation accessory HZ9VRPD0



### Features

#### Technical Data

Dimensions of the packed product (HxWxD) (mm) : 110 x 440 x 240

Pallet dimensions : 100.0 x 80.0 x 120.0

Standard number of units per pallet : 51

Net weight (kg) : 0.740

Gross weight (kg) : 1.0

EAN code : 4242003878286



4 242003 878286

## installation accessory

### HZ9VRPD0

#### Features

- # Mandatory installation kit for fully and partly ducted recirculation configurations. Recommended for recirculation extraction against an external wall. Includes:
  - 4 high-performance cleanAir odor filters with optimized odor reduction performance for cooking applications with complex odor molecules (e.g. fish). Large scale filter surfaces with high odor reduction capabilities and a lifetime of 360 hours of cooking (nonregenerative). Filters are additionally optimized for low-noise with optimized psycho-acoustics.
  - A diffusor element that can be directly connected to the flat duct elements and that spreads the outflowing air in the plinth area for partly ducted recirculation configurations. The diffusor can also be directly connected to air outlet element with an adhesive tape for fully ducted recirculation configurations.##
  - Adhesive tape to ensure a direct connection between the diffusor and the air outlet element such as lamella grids or outlet grids coming from the kitchen furniture manufacturers.
  - A sealing gasquet that can be attached onto a male flat duct before inserting the element into the appliance to ensure air tightness (The air outlet on the backside of the appliance can directly be accessed with a male flat duct element (DN 150)). The elements enable highly flexible and customized ducted plannings – all further necessary flat ducting elements (DN 150) must be ordered additionally. A return-flow aperture of  $\geq 400\text{cm}^2$  is to be respected in the plinth area.

installation accessory  
HZ9VRPD0

Dimensioned drawings

