

***Shark* HYDROVAC™**

Cordless 3-in-1 Cleaner

WD210ANZ

OWNER'S GUIDE



IMPORTANT SAFETY INSTRUCTIONS

FOR HOUSEHOLD USE ONLY READ ALL INSTRUCTIONS BEFORE USING THIS 3-IN-1 CLEANER

WARNING

To reduce the risk of fire, electric shock, injury, or property damage:

1. To reduce the risk of shock and unintended operation, turn off power before servicing.
2. This 3-in-1 Cleaner consists of a motorised nozzle, main body, pole, and handle. These components contain electrical connections, electrical wiring, and moving parts that potentially present risk to the user.
3. Before each use, carefully inspect all parts for any damage. If a part is damaged, discontinue use.
4. Use only identical replacement parts.
5. Use only as described in this manual. **DO NOT** use the 3-in-1 Cleaner for any purpose other than those described in this manual.
6. **DO NOT** immerse or spray water on the body of the 3-in-1 Cleaner. To clean the surface, wipe with a dry cloth.
7. Keep the 3-in-1 Cleaner and the dock's cord out of reach of children. Do not allow the appliance to be used by children. Do not allow to be used as a toy. Close supervision is necessary when used near children.
8. **DO NOT** handle plug or 3-in-1 Cleaner with wet hands.
9. **DO NOT** use without the dirty water tank, Clean Solution Tank, filter, brushroll, and brushroll cover in place.
10. Only use Shark® branded filters and accessories.
11. **DO NOT** put any objects into nozzle openings. **DO NOT** use with any opening blocked; keep free of dust, lint, hair, and anything that may reduce airflow.
12. **DO NOT** use if nozzle airflow is restricted. If the air paths or the motorised floor nozzle become blocked, turn the 3-in-1 Cleaner off. Remove all obstructions before you turn on the unit again.
13. Keep nozzle and all 3-in-1 Cleaner openings away from hair, face, fingers, uncovered feet, or loose clothing.
14. **DO NOT** use if 3-in-1 Cleaner is not working as it should, or has been dropped, damaged, left outdoors, or dropped into water.
15. Use extra care when cleaning on stairs.
16. **DO NOT** leave the 3-in-1 Cleaner unattended while powered on.
17. When using on carpet or flooring, always keep the 3-in-1 Cleaner moving over the carpet surface or flooring to avoid damaging the carpet fibers or flooring.
18. **DO NOT** place 3-in-1 Cleaner on unstable surfaces such as chairs or tables.
19. **DO NOT** use to pick up:
 - a) Large objects
 - b) Hard or sharp objects (nails, screws, or coins)
 - c) Large quantities of dust (e.g., drywall dust).
 - d) Smoking or burning objects (hot coals, cigarette butts, or matches)
 - e) Flammable or combustible materials (lighter fluid, petroleum, or kerosene)
 - f) Toxic materials (chlorine bleach, ammonia, or drain cleaner)
20. **DO NOT** use in the following areas:
 - a) Poorly lit areas
 - b) Outdoor areas
 - c) Spaces that are enclosed and may contain explosive or toxic fumes or vapors (lighter fluid, petroleum, kerosene, paint, paint thinners, or flammable dust)
21. Turn off the 3-in-1 Cleaner before any adjustment, cleaning, maintenance or troubleshooting.
22. During cleaning or routine maintenance,

DO NOT cut anything other than hair, fibers, or string wrapped around the brushroll

23. Allow all filters to air dry completely before replacing in the 3-in-1 Cleaner to prevent liquid from being drawn into electric parts.
24. **DO NOT** modify or attempt to repair the 3-in-1 Cleaner or the battery yourself.
25. Use only Shark brand cleaning fluids intended for use with this appliance to prevent internal component damage.

BATTERY PACK

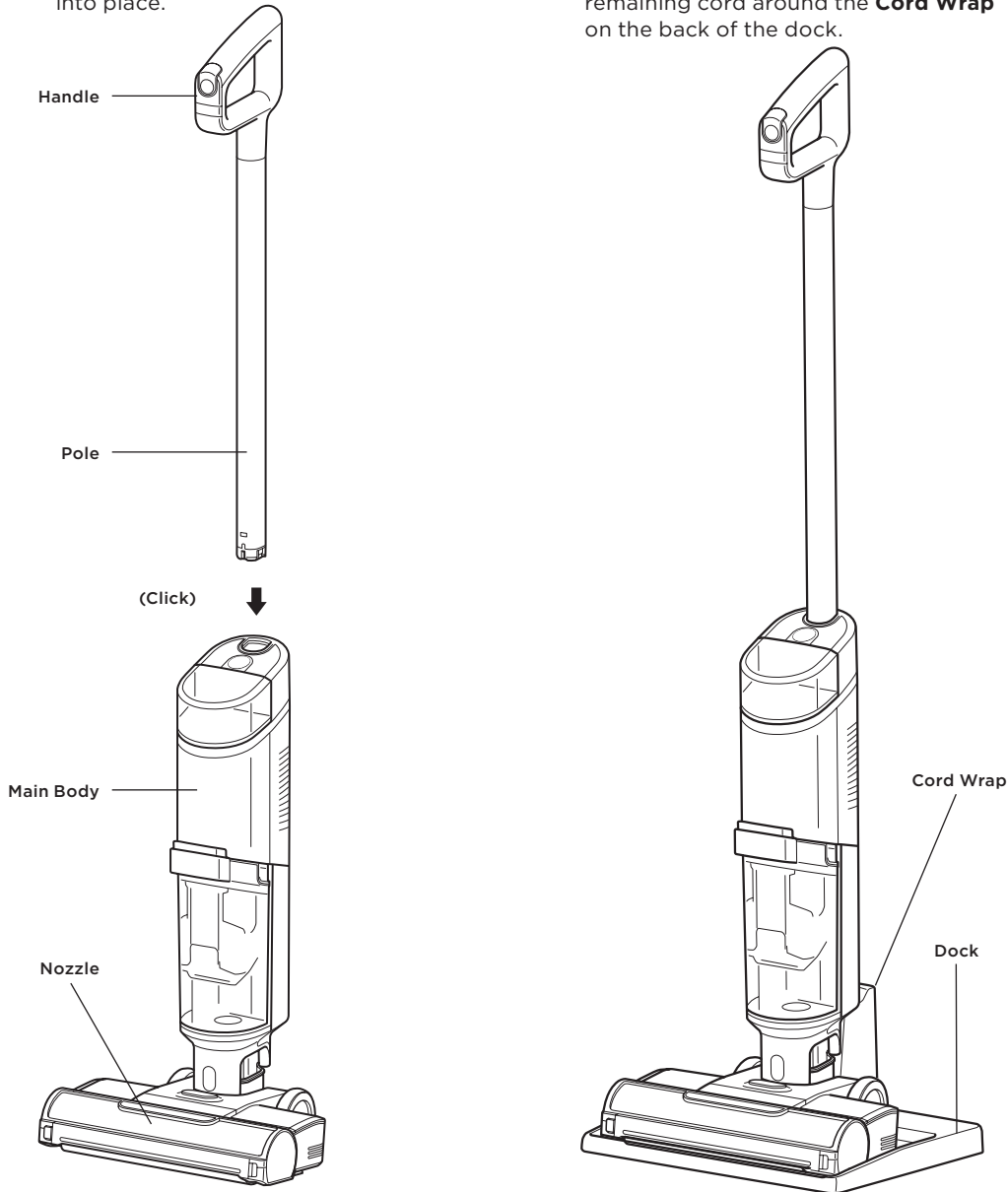
26. The battery is the power source for the 3-in-1 Cleaner. Carefully read and follow all charging instructions.
27. To prevent unintentional starting, ensure the 3-in-1 Cleaner is powered off before picking up or carrying the 3-in-1 Cleaner. **DO NOT** carry the appliance with your finger on the power switch.
28. Use only Shark charger XDCKWD200. Use of an incorrect charger may result in no charging, and/or unsafe conditions.
29. The battery pack is non-serviceable. Call consumer services with any questions and concerns.
30. Under abusive conditions, liquid may be ejected from the battery. Avoid contact with this liquid, as it may cause irritation or burns. If contact occurs, flush with water. If liquid contacts eyes, seek medical help.
31. Battery should not be stored at temperatures below 3° C or above 40° C to maintain long term battery life.
32. **DO NOT** charge battery at temperatures below 5° C or above 40° C.
33. Store the appliance indoors. **DO NOT** use or store it below 3° C. Ensure the appliance is at room temperature before operating.
34. **DO NOT** expose the battery to fire or temperatures above 130° C as it may cause explosion.

SAVE THESE INSTRUCTIONS

ASSEMBLY

1. Align the **Pole** with the opening in the **Main Body** and insert firmly until it clicks into place.

2. Place the **Dock** on the floor near a wall outlet and plug in the cord. Wind the remaining cord around the **Cord Wrap** on the back of the dock.



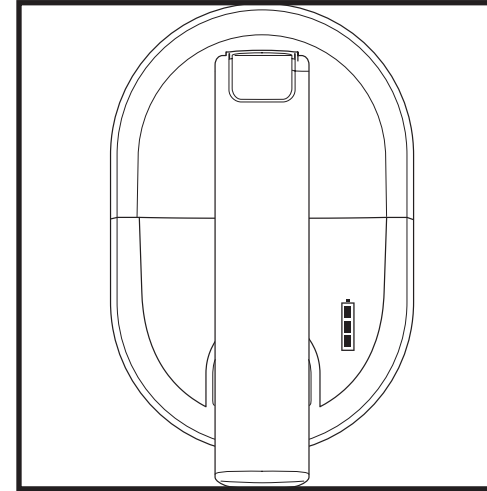
NOTE: When assembling your HydroVac, there may be a little water in or around the water tanks. This is because we test all our HydroVacs before you buy them to ensure the highest quality.

NOTE: To remove the handle, press the release button located on the back of the unit with a thin tool while pulling up on the handle.

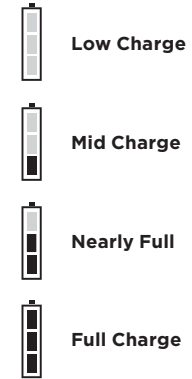
LI-ION BATTERY

Prior to first use, charge the battery completely. A full charge takes approximately 4 hours.

LED BATTERY POWER AND CHARGING INDICATOR

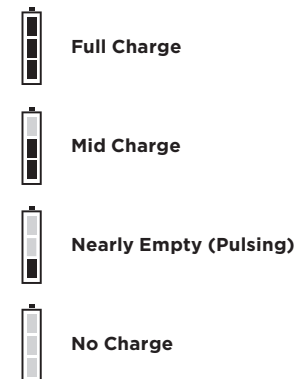


Charging



Note: Full Charge takes approximately 4 hours.

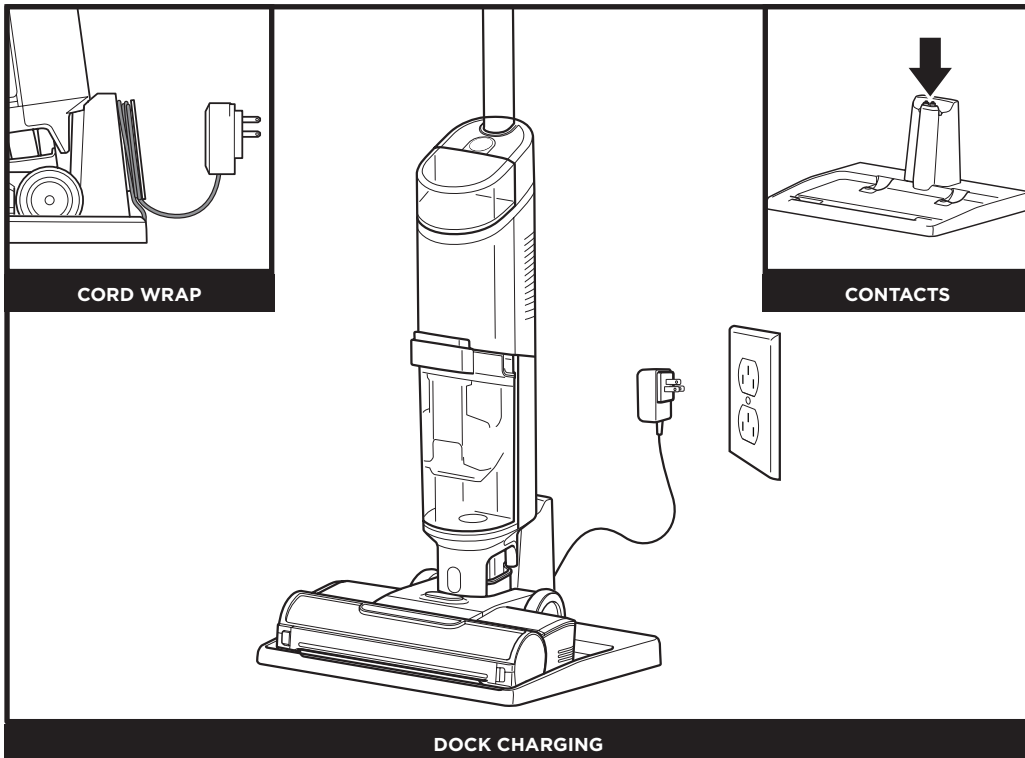
In Use



NOTE: The Shark® battery, like all lithium-ion batteries, will naturally decrease in capacity over time from the 100% capacity of a new battery.

USING YOUR 3-IN-1 CLEANER

CHARGING ON THE DOCK



Charge the unit by placing it on the dock. Make sure the contacts on the body are aligned with the contacts on the charging dock.

The **Battery Icon** on the main body will illuminate when charging begins.

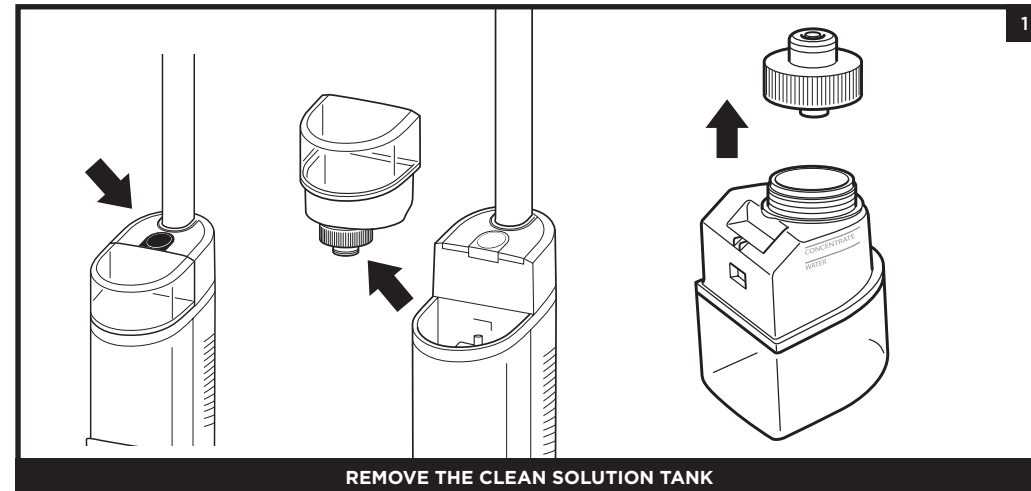
When charging is complete and you need to use the unit again, lift it off the dock.

NOTE: When docked properly, the charging lights on the Main Body will blink, indicating that charging has begun. When charging is complete, all three indicator lights will turn off.

NOTE: The main unit comes with a partial charge. For maximum runtime, charge fully before first use (approximately 4 hours). Leaving the unit charging will not damage battery life.

USING YOUR 3-IN-1 CLEANER

FILLING THE CLEAN SOLUTION TANK



Press the release button and lift off the **Clean Solution Tank**.



Unscrew the cap and add water to the tank, up to the WATER line. Next, add Shark HydroVac™ Multi-Surface Concentrate, filling to the HYDROVAC CONCENTRATE line. Replace the cap and reinsert the tank until it clicks into place. The top of the tank should be flush with the top of the body.

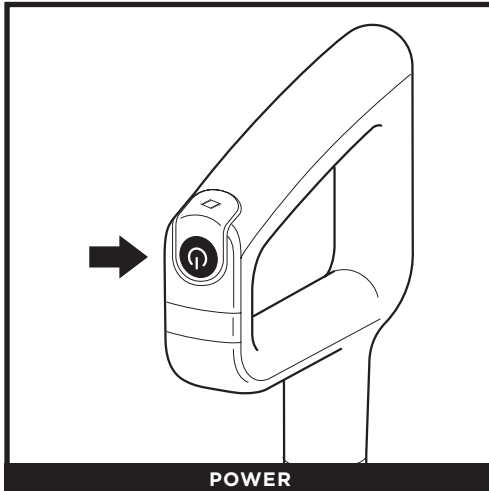
NOTE: Only use Shark HydroVac Multi-Surface Concentrate and water with this product.

NOTE: Be sure to not overfill the Clean Solution Tank with more HydroVac Multi Surface Concentrate than instructed, as this may cause streaking.

NOTE: Without sufficient water supply in the clean solution tank, HydroVac will not run.

USING YOUR 3-IN-1 CLEANER

CONTROLS

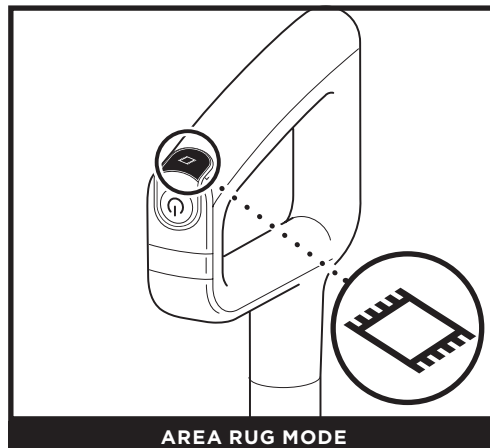


Press and release the **Power** button on the handle to turn on power. To turn off power, press the button again.

CLEANING MODES



Use Hard Floor mode for powerful cleaning on bare floors. To activate Hard Floor mode, turn on the unit and tilt the handle back.



To clean area rugs, press the Area Rug icon on top of the handle. The Area Rug light on the main body will illuminate. To turn off Area Rug mode (and to switch back to Hard Floor Mode), press the button again.

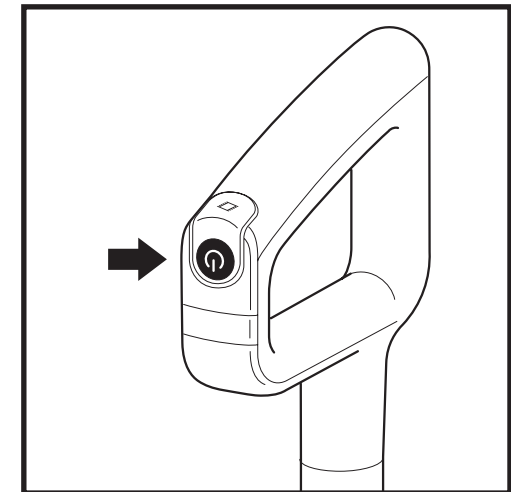
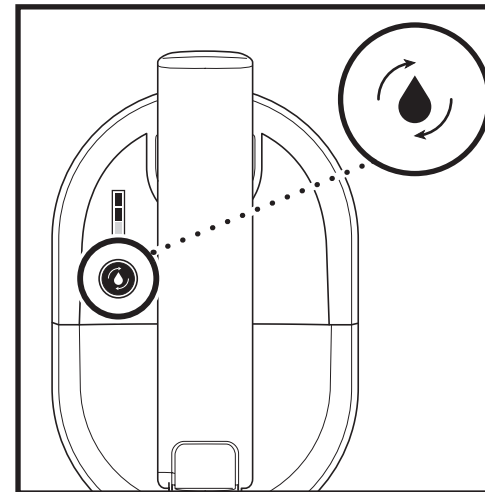
NOTE: To prevent leakage, DO NOT place the main body on the floor. The nozzle should always be kept flat on the floor.
NOTE: If you encounter a difficult stain, use Area Rug Mode for improved stain cleaning.
NOTE: If you encounter a stubborn odour on your floor or area rug, continue to clean in Area Rug mode until the odour is gone.
NOTE: If your floors are cloudy, streaky, or spotty after cleaning, it may be due to accumulated soap or grease residue. The floor may require several cleanings with the Hydrovac.

MAINTAINING YOUR 3-IN-1 CLEANER

SELF-CLEAN CYCLE

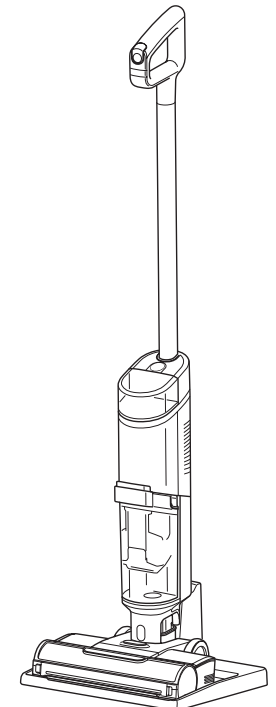
The self-clean cycle automatically cleans the system and the brushroll.

Recommended after every use



1. Place the unit on the charging dock.
2. Empty the **Dirty Water Tank** and make sure the clean solution tank is at least half full.
3. Press the **Power Button** to start the self-clean cycle. The icon will pulse for the full 2-minute duration of the cycle.
4. **DO NOT** remove the unit from the dock during the self-clean cycle. The icon will turn off when the cycle is complete.
5. Empty the dirty water tank.

See LED Glossary for more information on indicator lights during self-clean cycle.

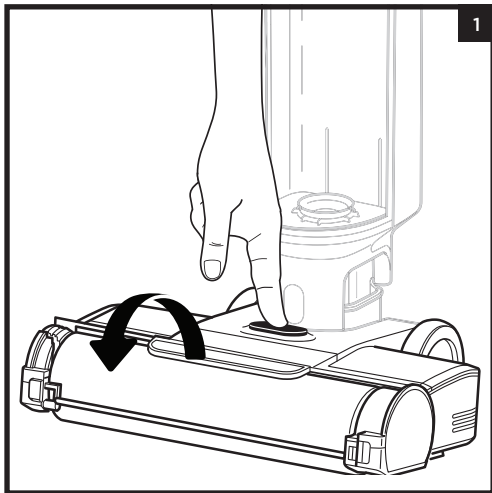


NOTE: Make sure the clean solution tank is at least half full and that the dirty water tank is empty before running the self-clean cycle.

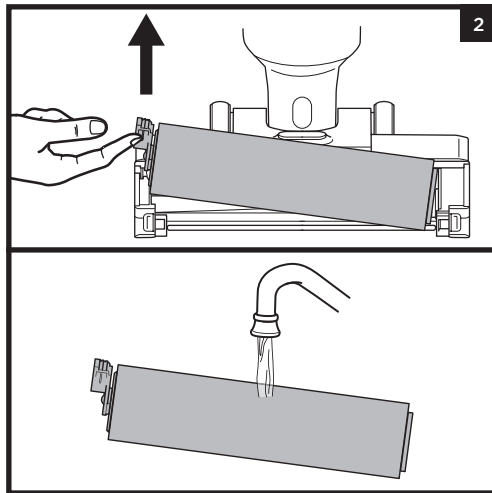
MAINTAINING YOUR 3-IN-1 CLEANER

MANUALLY CLEANING THE BRUSHROLL

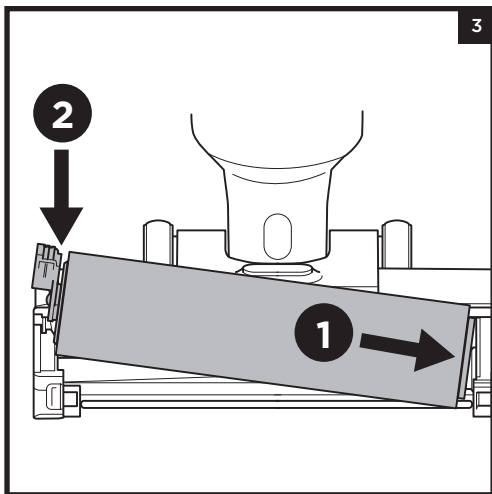
You can clean the brushroll by hand as an alternative to the self-clean cycle, and to remove debris or hair wrapped around the brushroll.



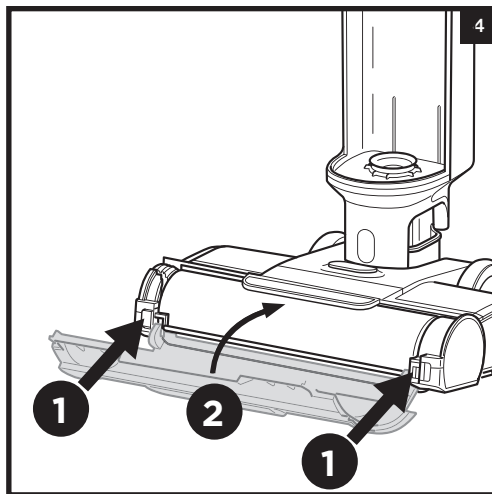
1. To access the brushroll, press the button on the top of the nozzle and lift off the brushroll cover.



2. Remove the brushroll by pulling up on the pull tab on the left side of the nozzle. Wipe away any debris stuck on the back wall. Wash thoroughly with warm water. Allow the brushroll to air-dry completely in a well-ventilated area for at least 24 hours.



3. Reinsert the brushroll by lining up the grooves on the end of the brushroll with the helix on the inner right side of the nozzle, then press down on the left side of the brushroll. When properly installed, the brushroll tab will be flush with the left side of the nozzle.

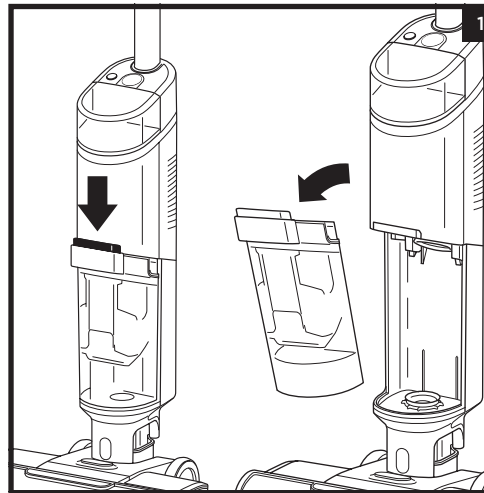


4. To reinstall the brushroll cover, insert the tabs on the cover into the slots on the nozzle. Press down on the cover until it clicks into place.

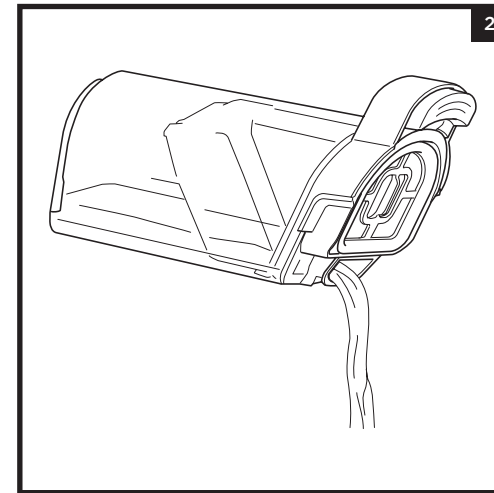
NOTE: Do not place brushroll in washing machine or dishwasher. Replace the brushroll after **6 months**.

MAINTAINING YOUR 3-IN-1 CLEANER

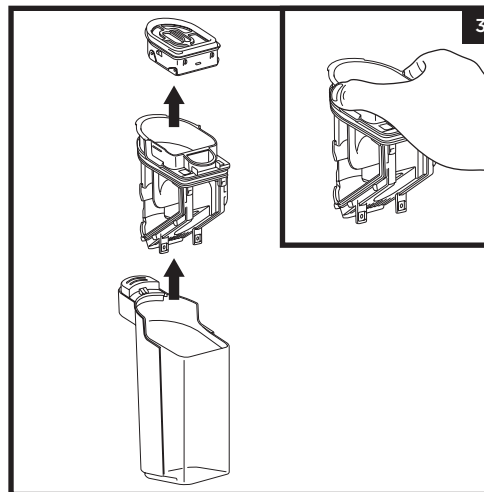
CLEANING THE DIRTY WATER TANK



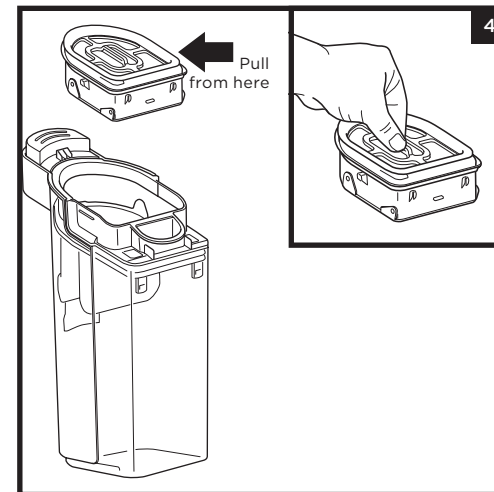
1. To remove the dirty water tank, press the release button and pull out the tank.



2. To dispose of liquid waste only, pour it out through the **Easy Pour spout** on the back of the dirty water tank.



3. To dispose of solid debris, lift out the **Solids Separator**. Grasp the recessed areas on the sides of the separator and lift it out. Empty the solid debris into the rubbish bin. If any liquid waste remains in the tank, pour it down a drain. To clean, rinse the separator and the tank with water.

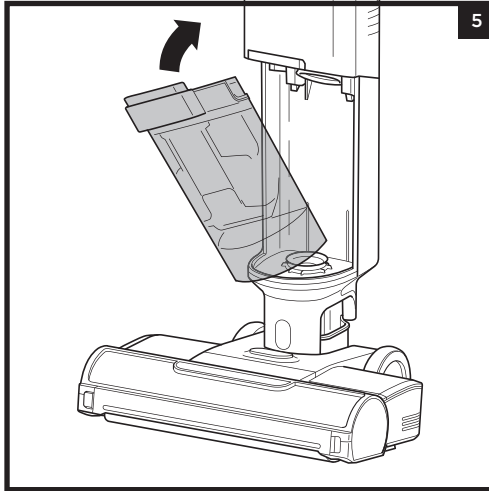


4. Clean the filter housing and the foam filter after every use. Pull out the foam filter and hand-wash with warm water and soap. Allow the foam filter to air-dry completely in a well-ventilated area for **24 hours** before reinstalling back into the unit.

NOTE: Replace the filter every **6 Months**.

NOTE: Do not place dirty water tank in washing machine or dishwasher.

MAINTAINING YOUR 3-IN-1 CLEANER

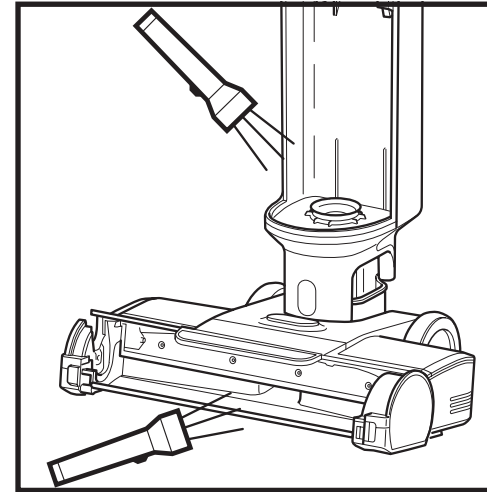


5. After cleaning the dirty water tank and the solids separator, allow them to air-dry in a well-ventilated area for at least 24 hours. To reinstall the tank, insert the bottom into the opening in the main body, then tilt the tank back until it clicks into place.

MAINTAINING YOUR 3-IN-1 CLEANER

CHECKING FOR BLOCKAGES

If you run over a hard or sharp object or notice a noise change while using your unit, check for blockages or objects caught in the brushroll, nozzle chamber, or inlet hose.



1. Turn off the power.
2. Remove the brushroll cover, brushroll, and dirty water tank.
3. Check the openings and remove all debris.
4. When finished, reinstall the brushroll and the cover.

ORDERING REFILLS AND PARTS

Replace the filter and brushroll every 6 months.
















Only use Shark HydroVac Concentrates, or water with the Shark HydroVac.

To order brushrolls, filters, Shark HydroVac Multi-Surface Concentrate, please visit AU sharkclean.com.au | NZ sharkclean.co.nz or scan the QR code below.



LED GLOSSARY

LED GLOSSARY

| SCENARIO | VISUAL | DETAILS |
|--|--|---|
| UNIT IS IN USE | | |
| Single battery icon is on . |  Solid. | Battery low. Note - you will not be able to run a self-clean cycle. |
| Self-clean icon is pulsing . |  Pulsing | Place unit on dock while self-clean icon is pulsing. Press the power button to run self-clean cycle. |
| Single battery icon is pulsing . |  Pulsing | Battery is close to running out. |
| Self-clean icon has turned off . |  Off | Insufficient battery life to run self-clean cycle after use. |
| UNIT IS PLACED ON THE DOCK | | |
| Battery icons are pulsing. |  Pulsing | Unit is charging. |
| Self-clean icon is on. |  On | There is sufficient battery life to run a self-clean cycle. Press the power button to run a self-clean cycle. |
| Self-clean icon is off. |  Off | There is not sufficient battery life to run self-clean cycle. Wait until self-clean icon turns on to run a self-clean cycle. |
| Power button is pressed to activate self-clean cycle. Battery icons and self-clean icon flash three times. |  Flash x3 | Unit is charging. There is not sufficient battery life to run a self-clean cycle. Wait until self-clean icon turns on to run a self-clean cycle. |
| Power button is pressed to activate self-clean cycle. Self-clean icon is pulsing. |  Pulsing | Self-clean cycle is running. Self-clean icon will turn off when cycle is complete. Battery icons will turn on and unit will begin charging. |
| SELF-CLEAN CYCLE IS IN PROCESS; SELF-CLEAN CYCLE PAUSES | | |
| Self-clean icon is flashing. Blue water droplet icon is flashing. |  Flashing | Clean solution tank is empty. Fill clean solution tank and press the power button to resume self-clean cycle. |
| Self-clean icon is flashing. Red water droplet icon is flashing. |  Flashing | Dirty water tank is full. Empty dirty water tank and press the power button to resume self-clean cycle. |
| UNIT IS IN USE; CLEANING FUNCTIONS TURN OFF | | |
| Blue water droplet icon is flashing. |  Flashing | Clean solution tank is empty. Fill clean solution tank, press the power button to resume cleaning. |
| Red water droplet icon is flashing. |  Flashing | Dirty water tank is full. Empty dirty water tank. Press the power button, resume cleaning. *If this is a false error, remove the solids separator and clean completely. Allow part to dry for 24 hours or dry manually. |
| Red water droplet icon is flashing. Red area rug icon is flashing. |  Flashing | Brushroll cover has been removed. Attach brushroll cover. Press the power button to resume cleaning. |
| Red water droplet icon is flashing. Red area rug icon is flashing. |  Flashing out of sync | Brushroll is jammed. Remove brushroll cover and brushroll. Remove any object that may be causing the brushroll to jam. Press the power button resume cleaning. |

TWO (2) YEAR LIMITED REPLACEMENT WARRANTY

The warranty commences on the date of purchase and expires at the end of the two-year period. In the unlikely event of a defect due to faulty materials or workmanship within the guarantee period we will replace the defective/faulty part with a new product, free of charge, or if the unit is deemed defective/faulty we replace the unit with an equivalent or upgraded model, at our discretion.

For warranty claims, you will need to submit a proof of purchase in the form of a valid receipt that displays date and place of purchase.

Your warranty is subject to the following conditions

- **DO NOT** operate the appliance with a damaged plug or cord, or if the unit has been dropped, damaged or dropped in water.
- To avoid the risk of electric shock, do not disassemble or attempt to repair the appliance on your own. If the supply cord is damaged, it must be replaced by a qualified electrician to avoid a hazard. Incorrect re-assembly or repair can cause a risk of electric shock or injury to persons when the appliance is used.
- The item has not been misused, abused, neglected, altered, modified or repaired by anyone.
- The item has been subjected to fair wear and tear.
- The item has not been used for trade, professional or hire purposes.
- The item has not sustained damage through foreign objects, substances or accident

Customer costs within warranty

The customer is responsible for any inwards freight charge to return a product for warranty if requested, and outward freight charge for warranty parts and or replacement unit.

Who is covered?

This warranty applies only to the original purchaser, who bought the product from an authorised retailer and may not be transferred. Proof of purchase is required.

What is not covered?

- Filters and brush rolls
- Accessories supplied with the item.
- Components that are subject to natural wear and tear caused by normal use in accordance with operating instructions.
- Unauthorised/improper maintenance/handling or overload is excluded from this warranty.
- Accidental damage
- Damage as a result of use not in accordance with the rating plate
- Removal of blockages. If a blockage does occur please refer to the trouble shooting guide within your Shark Operating manual
- Use of parts and accessories that are not genuine Shark components

NOTES

REGISTER YOUR PURCHASE



sharkclean.com.au/support-registration
sharkclean.co.nz/support-registration



RECORD THIS INFORMATION

Model Number: _____

Date Code: _____

Date of Purchase: _____
(Keep receipt)

Store of Purchase: _____

TIP: You can find the model and serial numbers on the QR code label on the bottom of the back of the 3-in-1 Cleaner.

TECHNICAL SPECIFICATIONS

Voltage: 21.6V

BATTERY REMOVAL AND DISPOSAL

This product uses a lithium-ion rechargeable and recyclable battery. When the battery no longer holds a charge, it should be removed from the unit and recycled. **DO NOT** incinerate or compost the battery.

When your lithium-ion battery needs to be replaced, dispose of it or recycle it in accordance with local ordinances or regulations. In some areas, it is illegal to place spent lithium-ion batteries in the rubbish bin or in a municipal solid waste stream. Return spent battery to an authorised recycling center or to retailer for recycling. Contact your local recycling center for information on where to drop off the spent battery.

Caution: Any changes or modifications to this unit not expressly approved by the party responsible for compliance could void the user's authority to operate the equipment.

All testing on carpet (e.g. per ASTM-F608) shall be conducted in Area Rug mode.



PLEASE READ CAREFULLY AND KEEP FOR FUTURE REFERENCE.

This Owner's Guide is designed to help you get a complete understanding of your new Shark HydroVac™ Cordless 3-in-1 Cleaner.

SharkNinja Operating LLC
ANZ: Erskine Park, NSW, 2759
<https://sharkclean.com.au/>
<https://sharkclean.co.nz/>

Illustrations may differ from actual product. We are constantly striving to improve our products, therefore the specifications contained herein are subject to change without notice.

This product may be covered by one or more U.S. patents. See sharkninja.com/patents for more information.

© 2024 SharkNinja Operating LLC. SHARK is a registered trademark of SharkNinja Operating LLC. SHARK HYDROVAC is a trademark of SharkNinja Operating LLC. RBRC is a trademark of Rechargeable Battery Recycling Corporation.

WD210ANZ_IB_MP_Mv6



@sharkcleaning