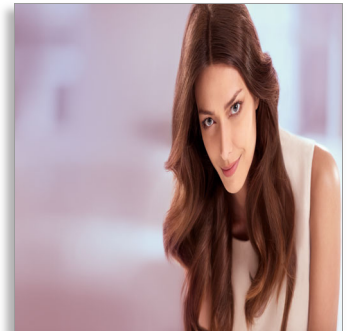




Philips DryCare
Hairdryer

2300W
DC Motor



BHD282/00



Stylish, powerful and light

Your all-in-one drying solution

Philips DryCare 2300W is everything you could want in a hairdryer. Perfectly balanced, it provides 2300W of drying power, is comfortably light to hold and handle, includes IONIC care for shine plus a stylish purple design.

Beautifully styled hair

- High performance 2300W drying
- Ceramic drying element for no over drying
- Cool Shot to set your style after drying
- 14mm concentrator for precision styling
- Volume diffuser for volume, curls and bounce

Less hair damage

- Ionic conditioning for shiny, frizz-free hair
- ThermoProtect temperature setting

Easy to use

- 3 heat and 2 speed settings for maximum styling control
- Lightweight, comfortable design
- 2m power cord

Stylish design

- Sleek, stylishly designed hairdryer

PHILIPS

Highlights

Powerful 2300W drying



Philips DryCare 2300W has the power you need. Its fast, powerful 2300W airflow ensures great styling results.

No over drying and smoothing

Philips DryCare has a ceramic element for to prevent overdrying and smooth hair. The element delivers infrared heat. This gentle warmth dries and smoothes hair from within, protecting it from overdrying while still drying the hair fast and effectively.

IONIC shine and condition



Philips DryCare has an IONIC shine enhancing button for smooth, frizz-free hair. Charged negative ions remove static, smooth cuticles and condition hair. The result is hair that is smooth, shiny and beautifully glossy.

Cool Shot



Philips DryCare has the all-important Cool Shot button. The Cool Shot provides a burst of cool air to set and finish your style.

Volume diffuser

Philips DryCare has a volume diffuser for adding volume and enhancing curls and bounce. For best results, hold the diffuser close to the crown and root area. Its fine textured pins will add volume, maximize thickness, bounce and help shape curls.

14mm concentrator

The narrow opening of the 14mm nozzle concentrates the flow of air to specific areas. Use for focused styling together with the dryer and a brush.

ThermoProtect setting



Philips DryCare has a ThermoProtect setting. This setting dries hair at the most effective yet caring temperature. Hair dries fast without overheating.

Accurate control



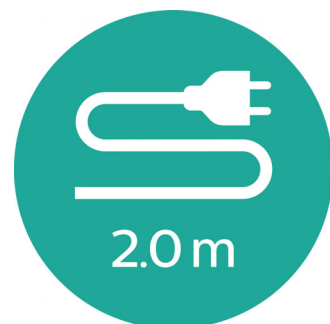
Philips DryCare has 3 heat and 2 speed settings for maximum styling control. Easy to set and style with, you can use to get exactly the power and temperature to suit your style.

Lightweight design



Philips DryCare weights only 407 grams making it comfortable to handle and hold. Its lightweight design makes styling easy without compromising on power.

2m cord



Philips DryCare has a 2m long power cord for flexibility and reach when styling.

Specifications

Technical specifications

- Frequency: 50-60 Hz
- Wattage: 2300 W
- Power: 2300 W
- Cord length: 2.0 m
- Motor: DC Motor
- Voltage: 220-240 V
- Color/finishing: Dark Mauve

Features

- Foldable handle: No
- Dual voltage: No

- Travel pouch: No
- Ion conditioning
- Diffuser
- Nozzle / Concentrator
- Number of attachments: 2
- Hanging loop
- Coolshot
- Ceramic

Service

- 2-year guarantee



Issue date 2016-07-01

Version: 1.1.1

EAN: 08 71010 37761 78

© 2016 Koninklijke Philips N.V.
All Rights reserved.

Specifications are subject to change without notice.
Trademarks are the property of Koninklijke Philips N.V.
or their respective owners.

www.philips.com