

Serie | 6

COA565GS0A
Built-in Microwave with steam function



- Included accessories**
1 x Plug-in grid
1 x glass pan
1 x Steam container

The built-in microwave with steam function: prepare your dishes by saving time, steaming or re-heating.

- **Steam function:** for gentle, healthy food preparation.
- **Microwave function:** time saving preparation, defrosting and re-heating of dishes.
- **AutoPilot 15:** every dish is a perfect success thanks to 15 pre-set automatic programmes.
- **White LCD display control:** easy-to-use thanks to direct access to additional functions, temperature recommendation and temperature indication.
- **Pop-out controls:** for an easy to clean front.
- **Stainless steel interior:** easy to clean interior thanks to smooth surfaces and no sharp edges.

Technical Data

Type of micro-wave oven :	MW only
Color / Material Front :	Stainless steel
Dimensions of the product (mm) :	455 x 594 x 545
Cavity dimensions (mm) :	236.0 x 432.0 x 350
Length electrical supply cord (cm) :	150
Net weight (kg) :	31.9
Gross weight (kg) :	36.0
EAN code :	4242005035441
Maximum micro-wave power (W) :	1000
Connection Rating (W) :	3100
Current (A) :	10
Voltage (V) :	220-240
Frequency (Hz) :	50
Plug type :	fixed connection



Serie | 6 Microwaves

COA565GS0A

Built-in Microwave with steam function

The built-in microwave with steam function: prepare your dishes by saving time, steaming or re-heating.

Oven type and heating methods

- Built-in Microwave with steam function with the heating functions: Pure microwave, Pure steaming, Full width grill, Half width grill
- Max. Power: 1000 W; 5 Microwave power settings: 90 W, 180 W, 360 W, 600 W, 1000 W
- Rapid heating-up
- Grill 2000 W
- Grill and microwave power levels 90 W, 180 W, 360 W, 600 W combinable
- All heating functions to be used separately or in combination
- Three different steam levels available

Design

- Rotary control knobs, Retractable control knobs, Touch control
- Stainless steel cavity
- Cavity volume: 36 l

Cleaning

- Cleaning program for water pipe
- Descaling programme

Convenience

- LCD-display control (white)
- Electronic clock/timer with end time programming, electronic timer
- User-friendly electronics: extremely easy and comfortable operation
- AutoPilot15
- 4 defrost and 11 cooking programmes
- LED lighting
- Large 0.8 litre water tank
- Location of the steam generator is outside of the cavity
- Automatic water tank detection
- Drop down door
- Cooling fan
- Bar handle

Accessories

- 1 x Plug-in grid, 1 x glass pan, 1 x Steam container

Safety and Environment

- Child lock function
- Automatic safety switch off function
- start button
- Door contact switch

2 year warranty

Technical Info

- Length of mains cable: 150 cm
- Total connected load electric: 3.1 KW
- Nominal voltage: 220 - 240 V

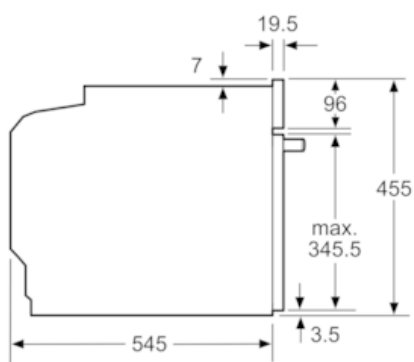
Dimensions

- Appliance dimensions (HxWxD): 455 mm x 594 mm x 545 mm
- Installation dimensions (HxWxD): 450 mm - 452 mm x 560 mm - 568 mm x 550 mm
- Please reference the built-in dimensions provided in the installation drawing

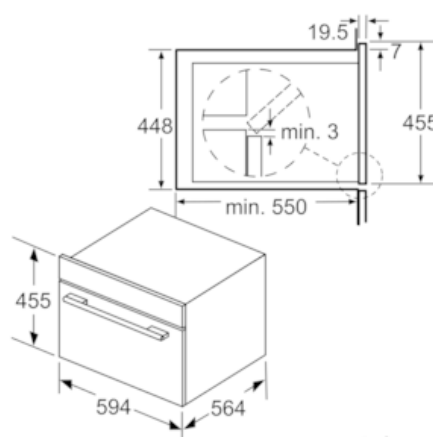
Serie | 6 Microwaves

COA565GS0A

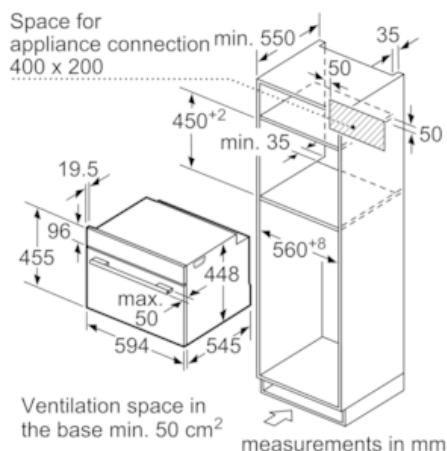
Built-in Microwave with steam function



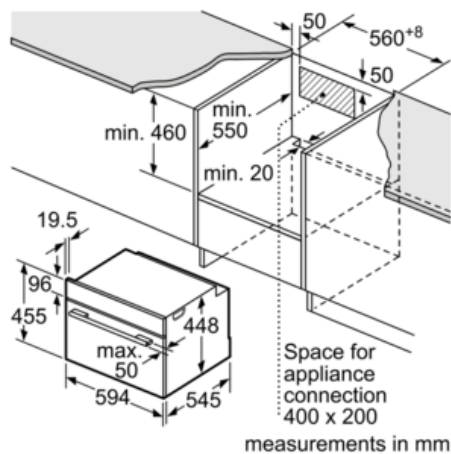
measurements in mm



measurements in mm



measurements in mm



measurements in mm