

AIRFLO®

INSTRUCTION MANUAL



Stick Vac

AFV616

IMPORTANT SAFEGUARDS

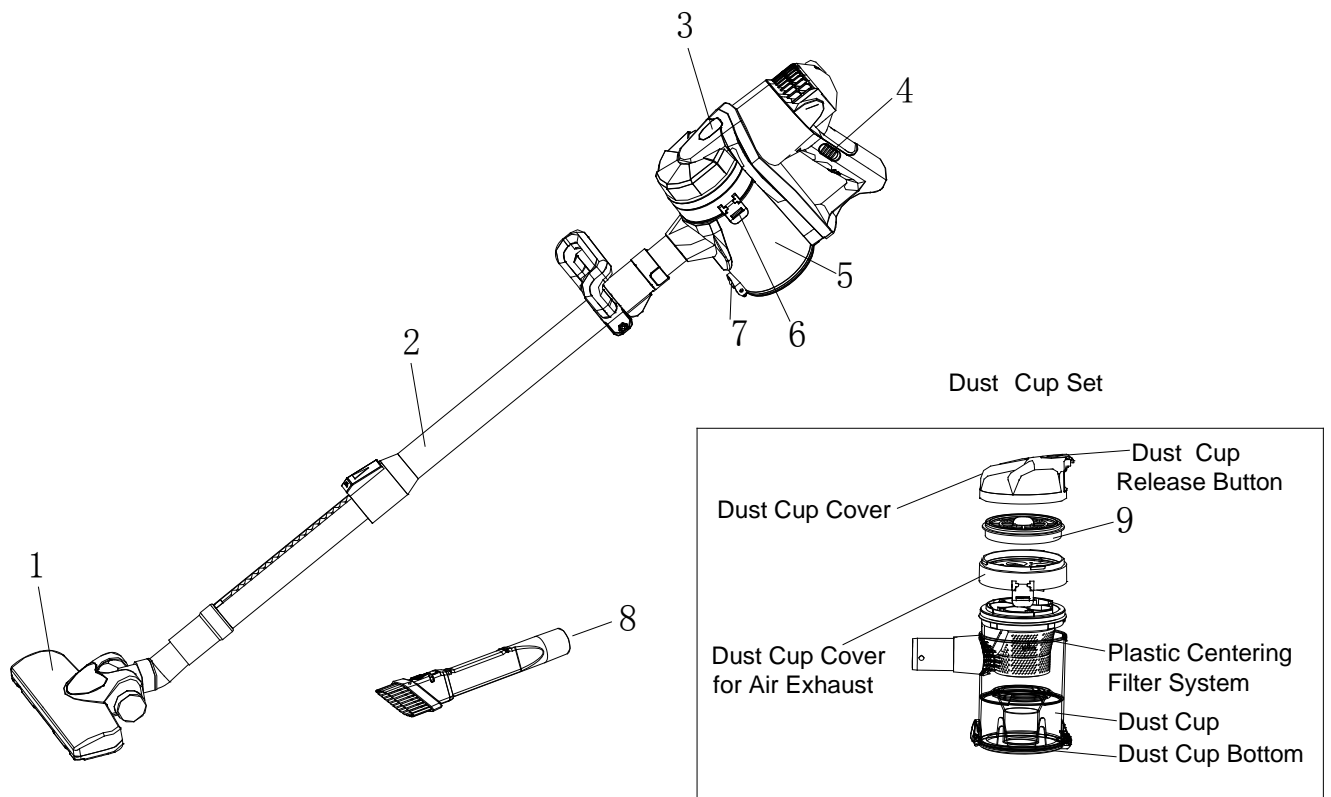
When using an electrical appliance, basic safety precautions should always be observed, including the following

READ ALL INSTRUCTIONS BEFORE USING YOUR VACUUM CLEANER.

WARNING: To reduce the risk of fire, electrical shock, or injury:

1. Do not leave appliance when plugged in. Unplug from outlet when not in use.
2. Do not use outdoors or on wet surfaces.
3. Do not allow to be used as a toy. Close attention is necessary when used by or near children.
4. Use only as described in this manual. Use only manufacturer's recommended attachments.
5. Do not use with damaged cord or plug. Do not use vacuum if it has been dropped, damaged, left outdoors, or dropped in water. Return it to an authorized service center.
6. Do not pull or carry by cord, use cord as a handle, or pull cord around sharp edges or corners.
7. Do not run appliance over cord. Keep cord away from heated surfaces.
8. Do not unplug by pulling on cord. To unplug, grasp the plug, not the cord.
9. Do not handle plug or appliance with wet hands.
10. Do not put any object into openings. Do not use with any opening blocked; keep free of dust, lint, hair and anything that may reduce air flow.
11. Keep hair, loose clothing, fingers, and all parts of body away from openings and moving parts.
12. Do not pick up anything that is burning or smoking, such as cigarettes, matches, or got ashes.
13. Turn off the control before unplugging.
14. Use extra care when cleaning on stairs.
15. Do not use to pick up flammable or combustible liquids such as gasoline or use in areas where they may be present.
16. Follow all label and marking instructions.
17. Keep end of hose, rods and other openings away from your face and body.
18. Do not use the vacuum cleaner without dust cup filter in place.
19. Always unplug this appliance before connecting or disconnecting vacuum hose.
20. Store the vacuum indoors. Put the vacuum away after use to prevent tripping accidents.
21. Using improper voltage may result in damage to the motor and possible injury to the user. Correct voltage is listed on the rating label.
22. Use only on dry, indoor surfaces.
23. Do not use for any purpose other than described in this user's guide.
24. If the supply cord is damaged, it must be replaced by the manufacturer, its service agent or similarly qualified persons in order to avoid a hazard.

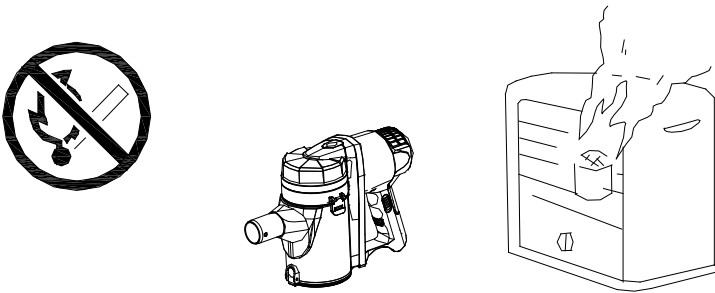
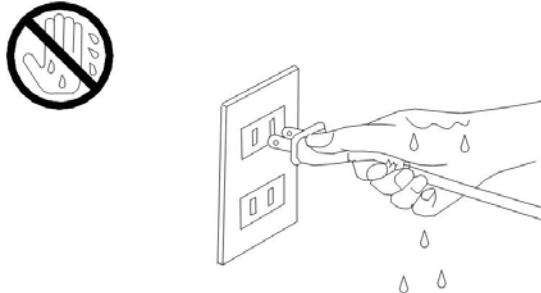
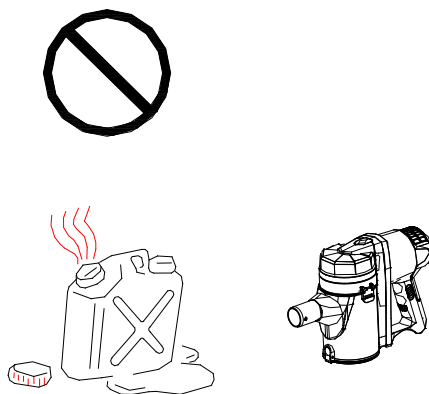
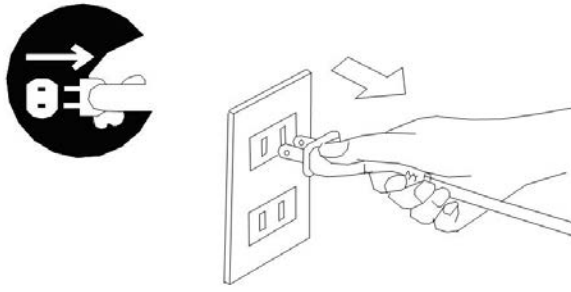
PARTS



- 1. Main Floor brush**
- 2. Telescopic rod**
- 3. Dust tank lock**
- 4. Power Switch**
- 5. Dust tank**
- 6. Upper release button for dust tank**
- 7. Bottom release button for dust tank**
- 8. Multi Crevice Brush**
- 9. HEPA filter**

PRECAUTIONARY MEASURES

If the opening that sucks in the air is blocked, you should switch off the vacuum cleaner at once. Clear the blockage before you attempt to restart the vacuum cleaner.

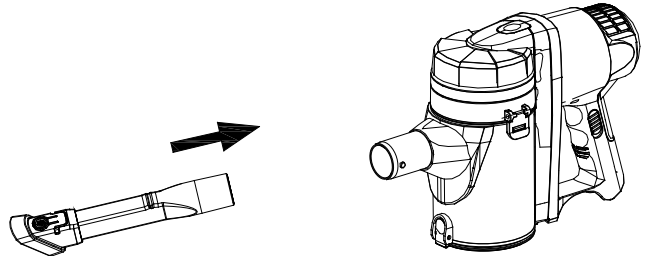
<p>1. Do not operate the vacuum cleaner too close to heaters or radiators. Do not pick up cigarette butts etc.</p>	 A diagram illustrating safety precautions. On the left, a circular prohibition sign contains a flame and a cigarette butt. In the center, a vacuum cleaner nozzle is shown positioned near a radiator. On the right, a vacuum cleaner unit is depicted with smoke or steam rising from its top.
<p>2. Before you insert the plug into the wall contact, make sure your hand is dry.</p>	 A diagram showing a hand with water droplets on it, using a cloth to dry a two-prong electrical plug before inserting it into a wall outlet. A circular prohibition sign with a hand and water droplets is shown to the left.
<p>3. Before you start using the vacuum cleaner, please remove large or sharp objects from the floor to prevent the filter being damaged. Do not use the vacuum to clean anything that is flammable.</p>	 A diagram showing a vacuum cleaner nozzle positioned near a large container of flammable liquid, indicated by a red 'X' and rising red smoke. A circular prohibition sign is shown above the container.
<p>4. When you want to pull the plug from the wall contact, pull the plug itself and not the electrical cable.</p>	 A diagram showing a hand pulling a two-prong electrical plug from a wall outlet. A circular prohibition sign with a hand pulling the cable is shown to the left.

ASSEMBLING YOUR VACUUM CLEANER

Always remove the plug from the power socket before fitting or removing accessories.

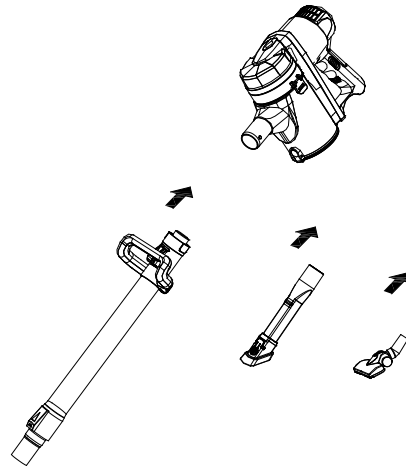
1.Fitting the vacuum cleaner

Before you use the vacuum, you must install the brush into the body first.



2. Extending the rod

Extending the rod will make it easier for you to reach and clean the floor. Either connect it to the floor brush or to the multi brush (2-in-1) for vacuuming furniture, shelves, etc.



3.Remove and install the dust cup

- (a) Remove dust cup from body: push the release button of dust cup then take out the dust cup from body. (fig. A)
- (b) Install dust cup on body: first, connect the underside of dust cup to the body. (pay attention to the fitting position and direction). Then push the dust cup all the way to the body (fig.B).

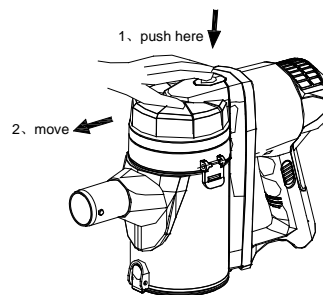


fig.A

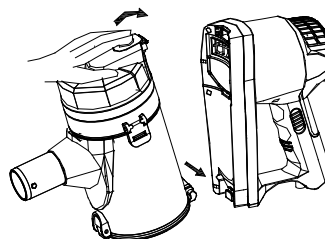


fig.B

CLEANING THE APPLIANCE

A. Cleaning the dust cup

1. Remove the dust cup from body.
2. Press the dust cup bottom release button to release the dirt inside (dust will fall down automatically, fig. A)
3. If the filter system is too dirty, press the dust cup cover release button, take out the filter assembly out of the dust cup, then clean them with a soft brush or wash them with water. Dry them completely before you use again. (fig. B).

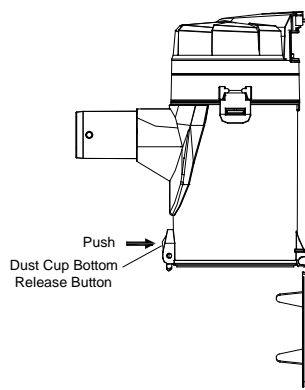


fig.A

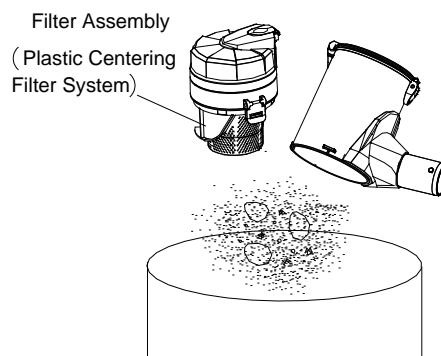


fig.B

B. Cleaning the HEPA filter / sponge

1. Remove the dust cup from body.
2. Rotate the dust cup cover counter-clockwise and take out the dust cup cover. Draw out the sponge and HEPA filter set. (fig. A)
3. Pull up the knob of the filter frame and pull out the sponge filter and HEPA filter from the case box. Clean the Sponge and HEPA filter with a soft brush or rinse it in lukewarm water. Dry them completely before use. (All the filters are washable. We recommend you to clean the filters when the suction power is becoming weak, fig. B)

Note: *Filters should be positioned back properly for the vacuum to work efficiently.*

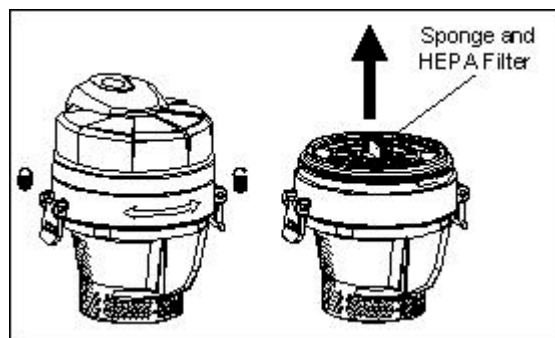


fig.A

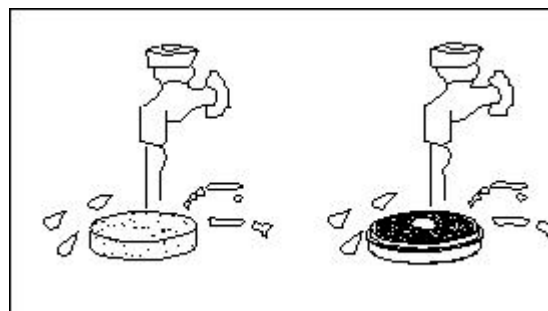


fig.B

TROUBLESHOOTING GUIDE

PROBLEM	POSSIBLE REASON	POSSIBLE SOLUTION
HAND VACUUM WILL NOT OPERATE	<ol style="list-style-type: none"> 1. No power in electrical outlet 2. Unit needs servicing 	<ol style="list-style-type: none"> 1. Check fuse or breaker. Replace fuse/reset breaker.
HAND VACUUM WILL NOT PICK-UP OR SUCTION POWER IS WEAK	<ol style="list-style-type: none"> 1. Dust cup is full. 2. Dust cup filter needs cleaning. 	<ol style="list-style-type: none"> 1. Empty dust cup 2. Remove dust cup filter and check for object(s) in air duct and remove.
DUST ESCAPING FROM HAND VACUUM	<ol style="list-style-type: none"> 1. Dust cup is full. 2. Dust cup filter is not installed correctly. 3. Puncture/hole in dust cup filter. 	<ol style="list-style-type: none"> 1. Empty dust cup . 2. Review dust cup filter instruction. 3. Replace dust cup filter.
HAND VACUUM BRUSHES WILL NOT PICK-UP	<ol style="list-style-type: none"> 1. Dust cup is full. 	<ol style="list-style-type: none"> 1. Empty and clean dust cup container.