



## Universal Clip On 4.3" Rear View Mirror Monitor & Camera Pack *with* Grid-lines



MCPK-43BG User Manual

Thank you for purchasing Parkmate's **MCPK-43BG** 4.3" Rear View Mirror Monitor & Camera Pack *with* Grid-lines. This state of the art Parkmate product is packed with features including a monitor embedded into the rear view mirror that automatically displays images from the rear-view camera upon selecting reverse gear.

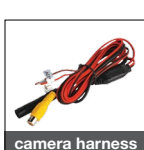
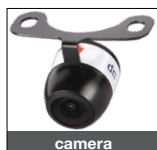
This product uses the most advanced technology and components to provide you with a long service life and integrates perfectly with the factory look of your vehicle to add a high level of safety and security to your driving experience.

**Please note:** Although this product will allow you to view driving blind spots, it does not remove the responsibility of driving the vehicle from the driver. The legal responsibility and safe driving practice remains with the driver at all times.

You have purchased this Parkmate product with the understanding that its use is as an aid only. We highly recommend that you have this product professionally installed to ensure that it will provide the functions it is set out to perform.

---

## MCPK-43BG Component List

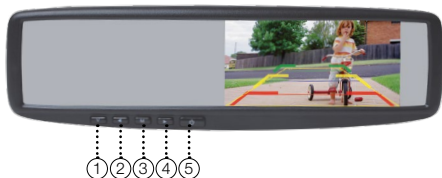


### Warning:

- To prevent electrical shock, DO NOT OPEN MONITOR CASE.
- Avoid exposing monitor to water, rain, moisture etc.
- Do not disassemble the monitor or camera. This voids the warranty. Disassembling the camera will compromise the waterproof seal.
- Do not remove the Directed warranty sticker as this voids warranty.

Parkmate's **MCPK-43BG** is a reverse camera and mirror monitor system for small to medium vehicles. The system utilises a clip on interior rear view mirror to display the camera view on an embedded 4.3" LCD monitor when the vehicle shifts into reverse gear. The monitor allows the driver to see blind spots behind the vehicle for increased convenience and safety. The camera has an advanced lens sensor which is able to provide excellent images under dark and light conditions. The camera has a 170° diagonal field of vision giving a superb viewing angle behind the vehicle.

## How to Operate your Mirror Monitor



- ① Button **V**: V1/V2 Switch
- ② Button **◀**: Adjustment -
- ③ Button **M**: Menu
- ④ Button **▶**: Adjustment +
- ⑤ Button **⏻**: Power ON/OFF

## How to Set your monitor:

When the mirror monitor is on, the on-screen menu commands may be selected by pressing the MENU button. The menu displays on screen and allows you to adjust Brightness, Contrast, Colour, Sharpness and Reset to Factory Settings:

## Rear View Mirror Monitor Features & Benefits:

- Clip on mirror universally attaches to all pre existing rear view mirrors
- Easy DIY installation
- Rear camera image automatically displays when reverse gear is selected
- Integrated screen means no messy wires or devices on your dashboard or windscreen
- Selectable dual camera input - V1 / V2

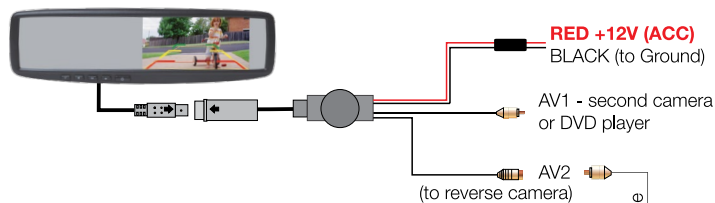
**IMPORTANT:** *The rear view Mirror/Monitor is not intended to be used for prolonged periods of time. Therefore the monitor stays OFF until the reverse gear is engaged.*

## Camera Features & Benefits:

- Superb night vision
- 170° Diagonal field of vision
- Convert to bumper mount using the provided bumper adaptor
- Switchable to front view / mirror image by cutting the thin WHITE wire on the camera lead
- Grid-line removal by cutting the thin GREEN wire on the camera lead

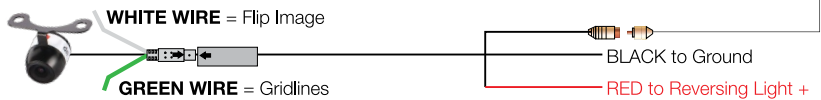


## Wiring Diagram:



**Front view option:** MCPK-43BG functions as a rear view camera standard and also supports front view. For front view, cut the thin WHITE wire near the camera lead. Power on and the image will be reversed.

**Grid-line option:** MCPK-43BG has parking grid-lines as a default. To remove grid-lines, cut the thin GREEN wire near the camera lead. Power on and the grid-lines will now be removed.



## Rear View Mirror Monitor Installation



Pull down

1. Expand the mirror monitor clamps and place over existing rear view mirror. Adjust the mirror to the best position.

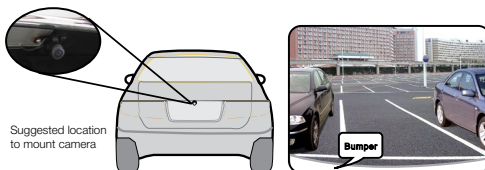


Clip over factory mirror

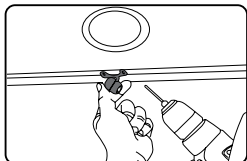
2. Run the cable along and behind the roof lining where possible and connect to camera harness as per wiring diagram.

## Camera Installation - Butterfly Mount

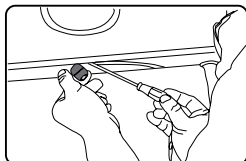
1. Select a flat and centred location near the number plate lamp at the rear of the vehicle to mount camera.



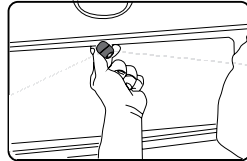
**IMPORTANT:** When selecting this location it is highly recommended that the image transmitted by the camera show the rear bumper and area behind the vehicle.



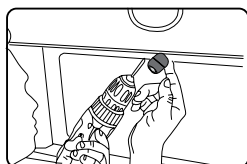
2. Attach tape to the bracket of the camera, and drill a small hole for the first screw.



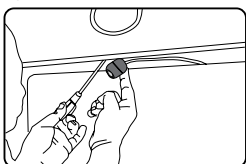
3. Use a screw driver to fix the first screw, but don't tighten it yet.



4. Insert camera wire through newly drilled hole and mount securely in place.



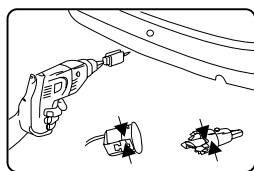
5. Mark the position suitable for the second screw and drill a small hole for it.



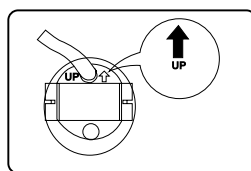
6. Fix the second screw and tighten both screws.

## Camera Installation - Flush Mount

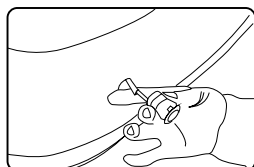
1. Unscrew the upper part of the camera anticlockwise, detach the upper part and bracket, and place the bumper adaptor instead.



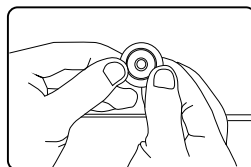
2. On the bumper, mark the middle position (both horizontally and vertically) where the camera is going, and drill a hole with the provided 16.5mm hole saw.



3. Ensure the "UP" arrow is positioned upwards. As pictured.



4. Feed the camera lead through the bumper hole before fixing the camera to the bumper.



5. To ensure tight and flat mounting, put the camera into the hole and using both thumbs, press evenly.

# Testing

## How to test:

- 1. Apply the parking brakes (safety precaution).
- 2. Turn Ignition to Accessory Position. (DO NOT START ENGINE)
- 3. Shift into reverse gear.
- 4. Image should appear on the monitor.

## Trouble Shooting:

Problem	Solution
No power to monitor while reversing.	Check power and reverse trigger connections.
"No Signal" appears while reversing.	1. Press AV1/AV2 button to change video inputs. 2. Check video input connections. 3. Check camera power connections.
Video image is not sharp.	Check camera lens for debris.

## Maintenance:

Always keep camera clear from dirt and mud. Clean camera with a soft moist cloth.

**Product Specification(s):**

<b>Monitor Technical Specifications</b>	
<b>Screen</b>	4.3" TFT Colour LCD
<b>Brightness</b>	350cd/m2
<b>Contrast Ratio</b>	300:1
<b>Resolution</b>	480 x 272
<b>Current Draw:</b>	Max 120mA
<b>Video Format</b>	NTSC/PAL
<b>Display Format</b>	16:9
<b>Nominal Voltage</b>	DC12V
<b>Working Temp.</b>	-20°C to 70°C

<b>Camera Technical Specifications</b>	
<b>Signal System</b>	NTSC
<b>Sync System</b>	Internal
<b>Horizontal Resolution</b>	550 TVL
<b>Minimum illumination</b>	0.2 Lux
<b>Diagonal Angle</b>	170°
<b>Waterproof Grade</b>	IP67
<b>Nominal Voltage</b>	DC12V
<b>Working Temp.</b>	-20° to 65°
<b>Mirror image switchable to flip view</b>	
<b>Grid-line switching</b>	

## Australian Residents - Warranty Terms & Conditions:

Our goods come with guarantees that cannot be excluded under the Australian Consumer Law. You are entitled to a replacement or refund for a major failure and for compensation for any other reasonably foreseeable loss or damage. You are also entitled to have the goods repaired or replaced if the goods fail to be of acceptable quality and the failure does not amount to a major failure.

This warranty is provided in addition to your rights under the Australian Consumer Law.

Directed Electronics warrants that this product is free from defects in material and workmanship for a period of 12 months from the date of purchase or for the period stated on the packaging. This warranty is only valid where you have used the product in accordance with any recommendations or instructions provided by Directed Electronics.

This warranty excludes defects resulting from alterations of the product, accident, misuse, abuse or neglect.

In order to claim the warranty, you must return the product to the retailer from which it was purchased or if that retailer is part of a National network, a store within that chain, along with satisfactory proof of purchase. The retailer will then return the goods to Directed Electronics. Directed Electronics will repair, replace or refurbish the product at its discretion. The retailer will contact you when the product is ready for collection. All costs involved in claiming this warranty, including the cost of the retailer sending the product to Directed Electronics, will be borne by you.

**Directed Electronics Address:** 44 Translink Drive, Keilor Park Victoria Australia 3042

**Ph:** +61 03 8331 4800

**Email:** [returns@directed.com.au](mailto:returns@directed.com.au)

---

To view the complete Parkmate range or for details on how to contact us, please visit our website at [www.parkmate.com.au](http://www.parkmate.com.au)