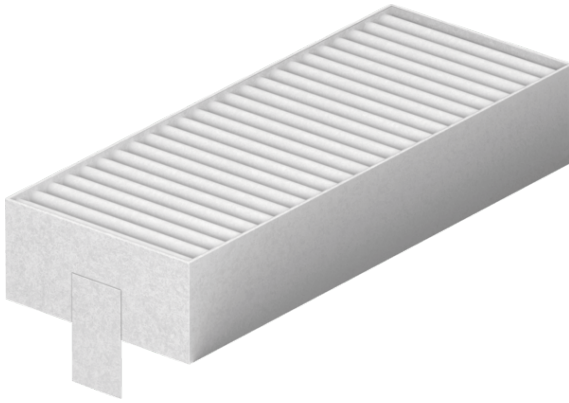


**installation accessory**  
**HEZ9VEDU0**



**Technical Data**

Dimensions of the packed product (HxWxD) (mm) :

95 x 215 x 180

Pallet dimensions :

90.0 x 80.0 x 120.0

Standard number of units per pallet :

168

Net weight (kg) :

0.117

Gross weight (kg) :

0.2

EAN code :

4242005225347



## **installation accessory**

### **HEZ9VEDU0**

---

- Mandatory accessory for ducted extraction configurations.  
Includes:
  - 4 high-performance, low-noise acoustic filters for significantly lower noise and strongly improved psycho-acoustics.
  - A sealing gasquet that can be attached onto a male flat duct before inserting the element into the appliance to ensure air tightness (The air outlet on the backside of the appliance can directly be accessed with a male flat duct element (DN 150))