

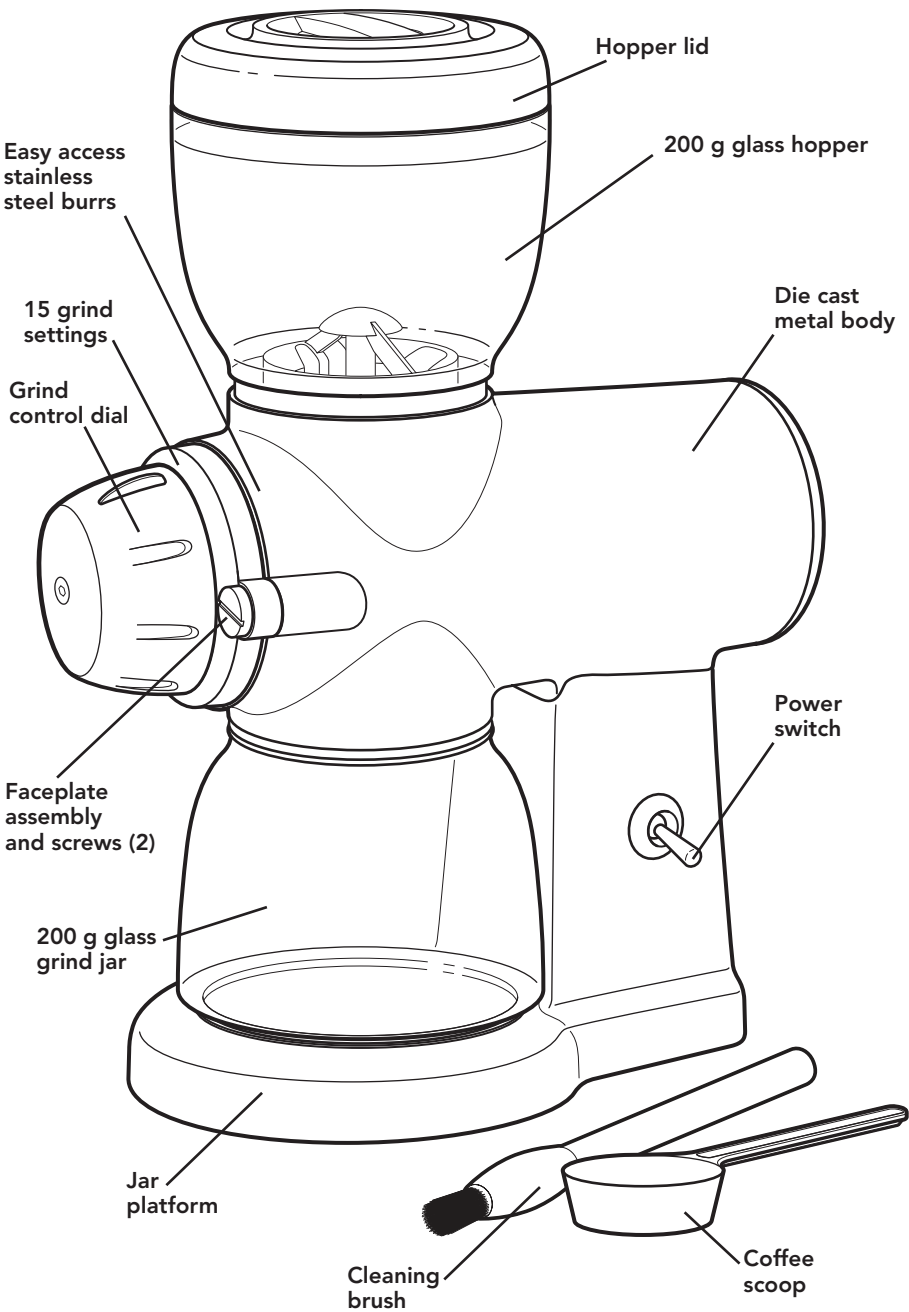
5KCG0702



KitchenAid

PARTS AND FEATURES

PARTS AND ACCESSORIES



NOTE: Store your Burr Grinder and all accessories in the provided storage box. Be sure to keep out of the reach of small children.

BURR GRINDER SAFETY

Your safety and the safety of others are very important.

We have provided many important safety messages in this manual and on your appliance. Always read and obey all safety messages.



This is the safety alert symbol.

This symbol alerts you to potential hazards that can kill or hurt you and others.

All safety messages will follow the safety alert symbol and either the word “DANGER” or “WARNING.” These words mean:

 **DANGER**

You can be killed or seriously injured if you don't immediately follow instructions.

 **WARNING**

You can be killed or seriously injured if you don't follow instructions.

All safety messages will tell you what the potential hazard is, tell you how to reduce the chance of injury, and tell you what can happen if the instructions are not followed.

IMPORTANT SAFEGUARDS

When using electrical appliances, basic safety precautions should always be followed, including the following:

1. Read all instructions.
2. To protect against risk of electric shock, do not put the Burr Grinder in water or other liquid.
3. Close supervision is necessary when any appliance is used by or near children.
4. Children shall not play with the appliance.
5. This appliance shall not be used by children.
6. Keep the appliance and its cord out of reach of children.
7. Unplug the Burr Grinder from the outlet when not in use, before putting on or taking off parts, and before cleaning.
8. Avoid contacting moving parts.

BURR GRINDER SAFETY

9. Do not operate any appliance with a damaged cord or plug, or after the appliance malfunctions or is dropped or damaged in any manner. Return the appliance to the nearest authorized service facility for examination, repair, or electrical or mechanical adjustment.
10. The use of attachments not recommended or sold by KitchenAid may cause fire, electric shock, or injury.
11. Do not use outdoors.
12. Do not let cord hang over edge of table or counter, or touch hot surfaces.
13. Check the bean hopper for the presence of foreign objects before using.
14. Appliances can be used by persons with reduced physical, sensory or mental capabilities or lack of experience and knowledge if they have been given supervision or instruction concerning the use of the appliance in a safe way and if they understand the hazards involved.
15. After grinding one full hopper of coffee beans (200g), please wait for one minute before attempting to grind a second full hopper of coffee beans (200g). After grinding two full hoppers of coffee beans, please wait until the unit cools down to room temperature if you need to grind more.

SAVE THESE INSTRUCTIONS

This product is designed for household use only.

BURR GRINDER SAFETY

ELECTRICAL REQUIREMENTS

WARNING



Electrical Shock Hazard

Plug into a grounded outlet.

Do not remove ground prong.

Do not use an adapter.

Do not use an extension cord.

Failure to follow these instructions can result in death, fire, or electrical shock.

Voltage: 220-240 Volts A.C. only

Frequency: 50-60 Hz

Wattage: 220-240 Watts

NOTE: This Burr Grinder has a grounded plug. To reduce the risk of electrical shock, the plug will fit in an outlet only one way. If the plug does not fit in the outlet, contact a qualified electrician. Do not modify the plug in any way.

A short power-supply cord is provided to reduce the risk resulting from becoming entangled in or tripping over a longer cord. Extension cords are available and may be used if care is exercised in their use.

If a longer extension cord is used:

The marked electrical rating of the extension cord should be at least as great as the electrical rating of the appliance.

- The extension cord should be a grounding-type cord.
- The cord should be arranged so it will not drape over the countertop or tabletop where it can be pulled on by children or tripped over.

USING THE BURR GRINDER

NOTE: The bean hopper holds a maximum of 200 g (7 oz) of beans.

HELPFUL TIP: Because partially ground coffee beans may remain between the burrs after the Burr Grinder is turned off, it may be easier to select a finer grind setting while the Burr Grinder is running.

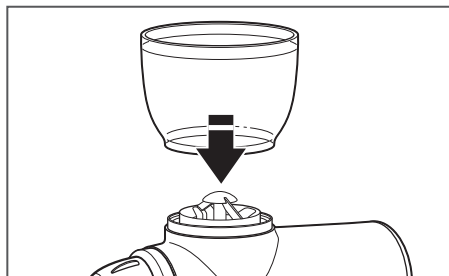
This Burr Grinder offers 15 different grind levels, available in half-step increments from 1 to 8. Select the grind by turning the grind control dial to the desired setting on the grind level ring, as shown in this chart. With continued use, you will be able to refine the setting to match your own tastes.

GRIND	COFFEE TYPE	AVERAGE GRIND SIZE	SETTING
FINE	ESPRESSO	325 microns	8
MEDIUM	SIPHON POUR OVER AUTOMATIC DRIP	750 microns	6
COARSE	FRENCH PRESS	1250 microns	1

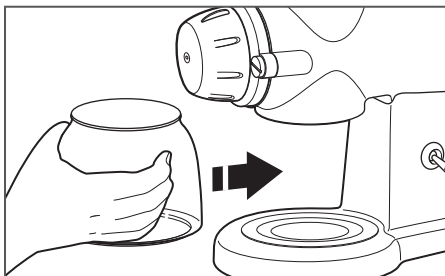
USING THE BURR GRINDER

ASSEMBLING AND RUNNING THE BURR GRINDER

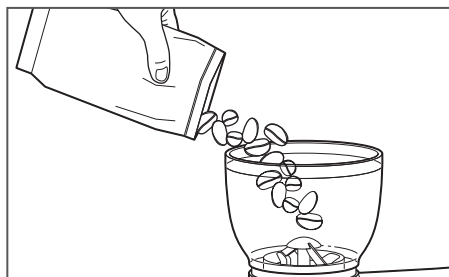
NOTE: Before using the Burr Grinder, wipe the motor housing and cord with a clean damp cloth. Wash the bean hopper and lid, and ground jar in hot soapy water, then rinse and dry; or, wash in the top rack of a dishwasher.



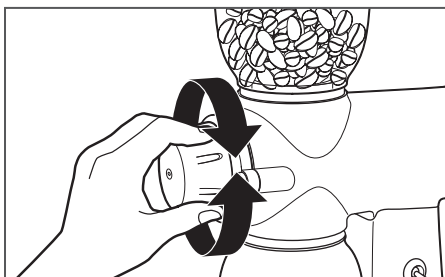
- 1** Make certain the Burr Grinder is unplugged. Attach the bean hopper to the top of the motor housing, turning clockwise until snug.



- 2** Slide the ground jar onto the jar platform, making certain it is centered in the middle.



- 3** Fill the bean hopper and then attach the lid.



- 4** Select your desired grind setting, using the "Grind setting chart".

USING THE BURR GRINDER

⚠ WARNING



Electrical Shock Hazard

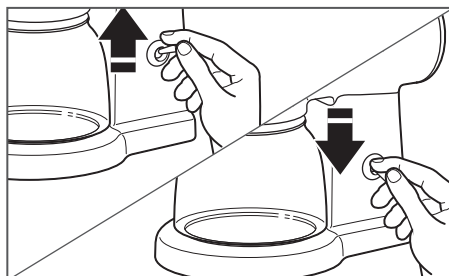
Plug into a grounded outlet.

Do not remove ground prong.

Do not use an adapter.

Do not use an extension cord.

Failure to follow these instructions can result in death, fire, or electrical shock.

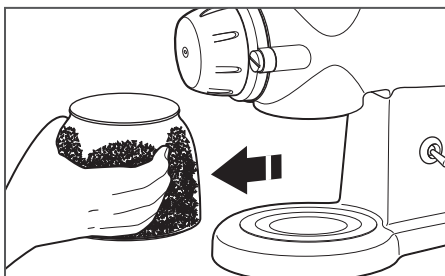


5

Plug the Burr Grinder into a grounded outlet.

Flip the POWER switch up to turn on, and begin grinding your coffee.

Flip the POWER switch down when you have ground the desired amount of coffee.



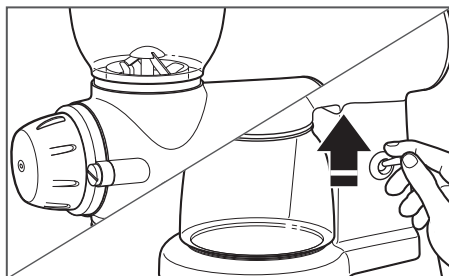
6

After grinding, remove the ground jar from the Burr Grinder, and scoop out the ground coffee.

USING THE BURR GRINDER

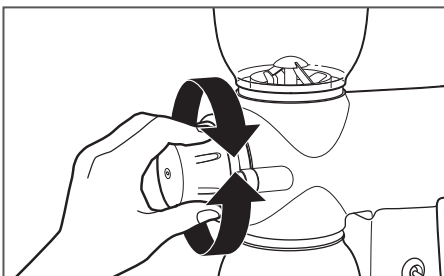
ADJUSTING THE BURRS FOR A FINER OR COARSER GRIND

If you're an espresso or French Press aficionado, you may wish to adjust the factory setting of the cutting burrs to provide optimum performance for your style of brewing.



1

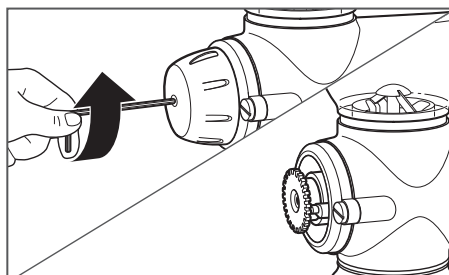
Make sure the bean hopper is empty; then, flip the POWER switch up to turn on and run for a few seconds to clear any debris.



2

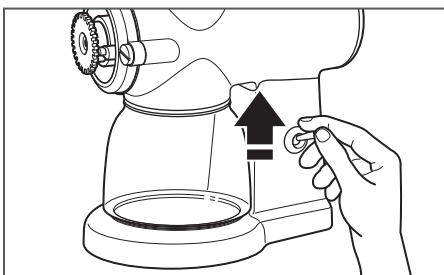
For maximum grind fineness: Turn the grind control dial to level 8.

For maximum grind coarseness: Turn the grind control dial to level 1.



3

Using a 4 mm allen wrench or a hex-head screwdriver, remove the screw from the front of the grind control dial by turning it counterclockwise. You will be able to see the grind control gear after the dial is removed.



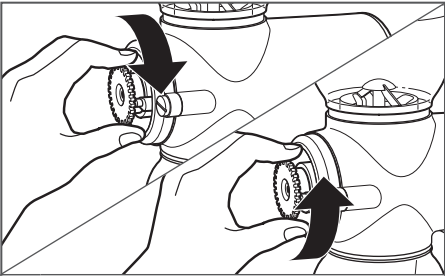
4

For maximum grind fineness: Flip the POWER switch up to turn on the Burr Grinder.

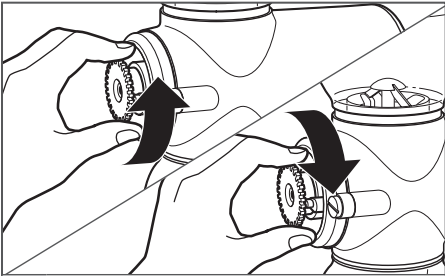
For maximum grind coarseness: You do not need to turn the Burr Grinder on while adjusting the burrs.

NOTE: If you cannot get the exact maximum coarseness of grind you prefer by adjusting the Burr Grinder while it is off, try adjusting with the Burr Grinder turned on.

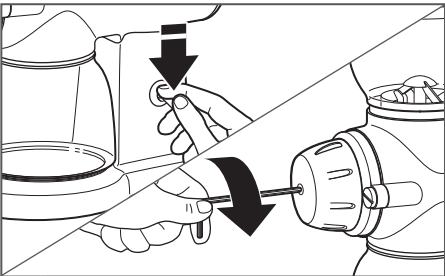
USING THE BURR GRINDER



5a **For maximum grind fineness:** Turn the grind control gear clockwise, one “click” at a time until you hear a distinct grating or rubbing sound that signifies the burrs are touching. Then, turn the grind control gear one “click” counterclockwise. The grating or rubbing sound will stop.



5b **For maximum grind coarseness:** Turn the grind control gear counterclockwise, one “click” at a time until the clicking sound diminishes and the gear offers little resistance to being turned.



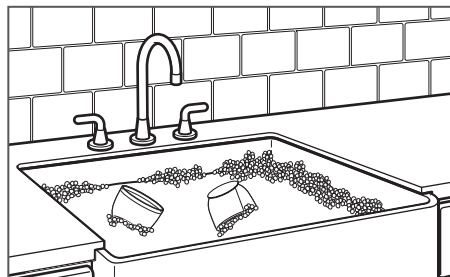
6 **Flip the POWER switch off.**
If you adjusted for maximum grind fineness: Reattach the grind control dial, making certain the dial indicator points to grind level 8.
If you adjusted for maximum grind coarseness: Reattach the grind control dial, making certain the dial indicator points to grind level 1.

IMPORTANT: If the Burr Grinder produces a grating or “rubbing” sound during use, the burrs have been improperly adjusted. Damage to the burrs will result. Readjust the burrs immediately.

CARE AND CLEANING

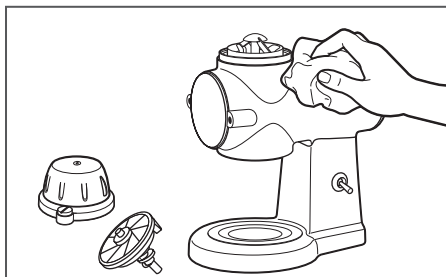
CLEANING THE BURR GRINDER AND BURRS

IMPORTANT: To avoid damage, never wash or immerse the Burr Grinder main body, cutting burrs, burr-shaft assembly, or face plate in water, or place in the dishwasher. The bean hopper and lid and grind jar are dishwasher safe. Top rack only.



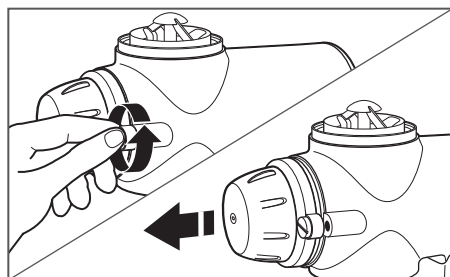
1

After using the Burr Grinder, remove the bean hopper and lid, and grind jar. Wash these pieces by hand with a soft cloth, in warm sudsy water; or, wash in the top rack of the dishwasher.



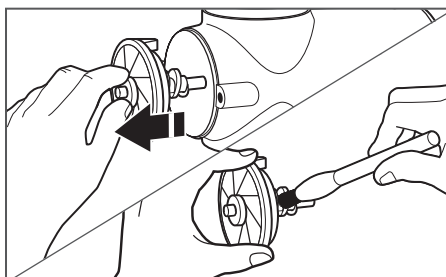
2

Clean the Burr Grinder main body and all its parts by hand only. Wash with a soft, damp cloth. Dry thoroughly with a soft dry cloth. Do not wash in the dishwasher. Do not immerse in water.



3

Remove the faceplate assembly by loosening the screws on either side. Screws can be loosened by hand.



4

Pull the burr-shaft assembly out to clean with the other parts. Using the burr-cleaning brush, clean the burr mounted on the burr-shaft assembly and the burr mounted in the motor housing.

IMPORTANT: If the Burr Grinder is used frequently, the burrs should be cleaned regularly for best performance. Cleaning enables the burrs to achieve the finest, most consistent grinds possible.

TROUBLESHOOTING

If your Burr Grinder should malfunction or fail to operate during use, please check the following:



⚠ WARNING

Electrical Shock Hazard

Plug into a grounded outlet.

Do not remove ground prong.

Do not use an adapter.

Do not use an extension cord.

Failure to follow these instructions can result in death, fire, or electrical shock.

- Is the Burr Grinder plugged in? Check to see if the Burr Grinder is plugged into a grounded outlet. If it is, unplug the Burr Grinder, then plug it into the same outlet again. If it still does not work, check the fuse or circuit breaker on the electrical circuit the Burr Grinder is connected to and make sure the circuit is closed. If it does not run after taking these steps, a foreign object may be jamming the cutting burrs. Refer to “Care and cleaning” section for detailed information on cleaning the cutting burrs.

- If the Burr Grinder runs when switched on, but coffee does not grind: The burrs require cleaning or are worn. Refer to “Care and cleaning” section for detailed information on cleaning the cutting burrs.
- If the Burr Grinder is operating normally, but stops abruptly: Immediately turn off the Burr Grinder. A coffee bean, may have jammed the cutting burrs. Refer to “Care and cleaning” section for detailed information on cleaning the cutting burrs.
- If the grind is too coarse, or the Burr Grinder isn’t producing an acceptable range of grinds: Refer to the “Adjusting the burrs for a finer or coarser grind” section for more information.

If the problem is not due to one of the above items, see your warranty.

Do not return the Burr Grinder to the retailer, as they do not provide service.

KitchenAid

© 2015. All rights reserved.
Specifications subject to change without notice.