

# POWERLIFTER™ USER GUIDE

1521 SERIES

\*Product images may vary

# IMPORTANT SAFETY INSTRUCTIONS

## READ ALL INSTRUCTIONS BEFORE USING YOUR VACUUM.

When using an electrical appliance, basic precautions should be observed, including the following:



## WARNING

**TO REDUCE THE RISK OF FIRE, ELECTRIC SHOCK, OR INJURY:**

- » This appliance can be used by children aged from 8 years and above and persons with reduced physical, sensory or mental capabilities or lack of experience and knowledge if they have been given supervision or instruction concerning use of the appliance in a safe way and understand the hazards involved. Cleaning and user maintenance shall not be made by children without supervision.
- » Children should be supervised to ensure that they do not play with the appliance.
- » If the supply cable is damaged, it must be replaced by the manufacturer, its service agent or similarly qualified persons in order to avoid a hazard.
- » Keep hair, loose clothing, fingers, and all parts of body away from openings and moving parts of the appliance and its accessories.
- » Do not leave appliance when plugged in.
- » Unplug from electrical socket when not in use and before cleaning, conducting maintaining, troubleshooting or servicing the appliance.
- » Do not allow to be used as a toy.
- » Use only as described in this user guide.
- » Use only manufacturer's recommended attachments.
- » Do not use with damaged cable or plug.
- » Do not immerse in water or liquid.
- » If appliance is not working as it should, has been dropped, damaged, left outdoors, or dropped into water; do not attempt to operate it and return it to a service center.
- » Do not pull or carry by cable, use cable as a handle, close door on cable, or pull cable around sharp edges or corners.
- » Do not run appliance over cable.
- » Keep cable away from heated surfaces.
- » Do not unplug by pulling on cable.
- » To unplug, grasp the plug, not the cable.
- » Do not handle plug or appliance with wet hands.
- » Do not put any object into openings.
- » Do not use with any opening blocked; keep free of dust, lint, hair, and anything that may reduce air flow.
- » Turn off all controls before unplugging.
- » Use extra care when cleaning on stairs.
- » Do not use to pick up flammable or combustible liquids, such as petroleum, or use in areas where they may be present.
- » Do not pick up toxic material (chlorine bleach, ammonia, drain cleaner, etc.)
- » Do not use appliance in an enclosed space filled with vapours given off by oil base paint, paint thinner, some mothproofing substances, flammable dust, or other explosive or toxic vapours.
- » Do not pick up hard or sharp objects such as glass, nails, screws, coins, etc.
- » Use only on dry, indoor surfaces.
- » Keep appliance on a level surface.
- » Do not pick up anything that is burning or smoking, such as cigarettes, matches, or hot ashes.
- » Do not use without dust bag and/or filters in place.
- » Do not use outdoors or on wet surfaces
- » If your appliance is fitted with a nonrewireable BS 1363 plug it must not be used unless a 13 amp (ASTA approved to BS 1362) fuse is fitted in the carrier contained in the plug. (Spare may be obtained from your BISSELL supplier). If for any reason the plug is cut off, it must be disposed of, as it is an electric shock hazard should it be inserted into a mains socket
- » Do not leave machine running in the same spot without handle fully upright.
- » This appliance is provided with double insulation. Use only identical replacement parts.
- » Unplug before connecting TurboEraser Pet Tool and Pet Hair Eraser Tool.

## SAVE THESE INSTRUCTIONS FOR FUTURE USE

**FOR OPERATION ON A 220-240 VOLT A.C. 50/60 HZ POWER SUPPLY ONLY.**

This model is for household use only.

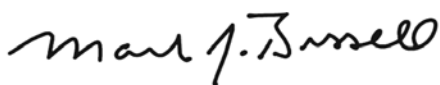
# Thanks for buying a BISSELL vacuum

We're glad you purchased a BISSELL vacuum. Everything we know about floor care went into the design and construction of this complete, high-tech home cleaning system.

Your BISSELL vacuum is well made, and we back it with a limited five-year warranty. We also stand behind it with a knowledgeable, dedicated Consumer Care department, so, should you ever have a problem, you'll receive fast, considerate assistance.

My great-grandfather invented the floor sweeper in 1876. Today, BISSELL is a global leader in the design, manufacture, and service of high quality homecare products like your BISSELL vacuum.

Thanks again, from all of us  
at BISSELL.



Mark J. Bissell  
Chairman & CEO

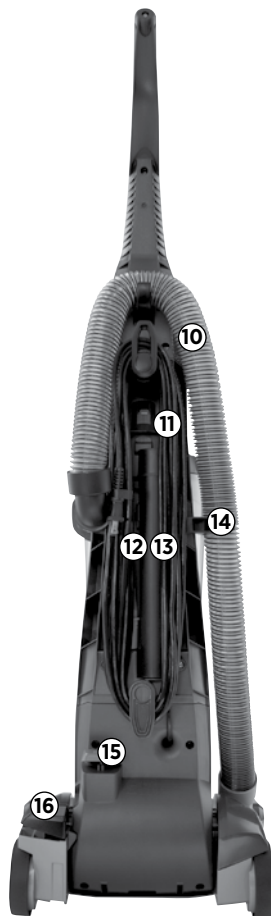
Safety Instructions.....	2
Product View.....	4
Assembly .....	5
Operations .....	6-7
Maintenance & Care .....	8-13
Troubleshooting .....	14
Replacement Parts .....	15
Guarantee.....	16
Service.....	16



# Product View



1. Handle
2. Pet TurboEraser™ Tool or TurboBrush™ Tool (select models)
3. Dirt Tank Release Button
4. Dirt Tank
5. Hose Wand Base (remove to use tools)
6. Pre-Motor Filter (located under dirt tank)
7. Post Motor Filter Door Access
8. Height Adjustment Knob
9. OnePass™ Brush Roll
10. Stretch Hose
11. Power Cord
12. Crevice Tool or Pet Crevice Tool (select models)
13. Extension Wand
14. Hose Clip
15. Power Switch
16. Detent Pedal
17. Pet Hair Eraser™ Tool (select models and does not store on vacuum)



## WARNING

Plastic film can be dangerous. To avoid danger of suffocation, keep away from babies and children.



## WARNING

Do not plug in your vacuum cleaner until you are familiar with all instructions and operating procedures.



## WARNING

To reduce the risk of electric shock, turn power switch off and disconnect from electrical outlet before performing maintenance or troubleshooting checks.

# Assembly

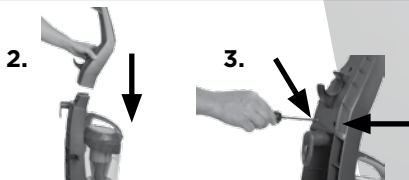
You will need a Phillips screwdriver for assembly.

## **WARNING**

Plastic film can be dangerous. To avoid danger of suffocation, keep away from babies and children.

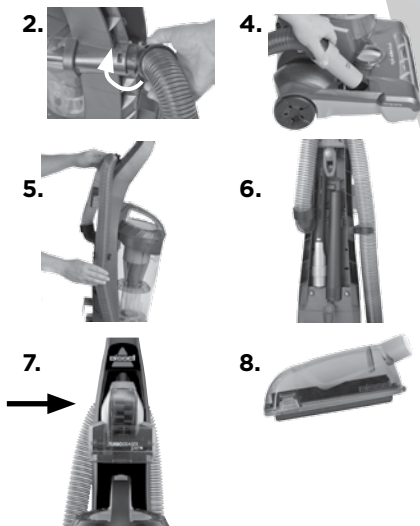
### **Attach handle**

1. Locate the handle and the two screws taped to the handle.
2. Slide the handle downward over the body of the vacuum.
3. Insert two screws and fasten using screwdriver.



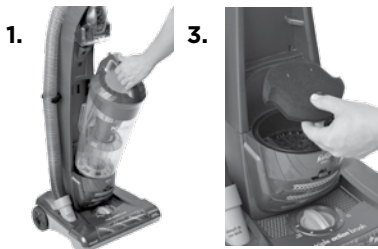
### **Attach hose and tools**

1. Remove hose from package
2. Insert the hose with elbow end facing downwards and align locking tab with slot.
3. Rotate clockwise until snapped into place
4. Take the opposite end and use the hose end to open the foot base door, insert into foot, and push into place.
5. Stretch hose and clip into the side and upper hose clips.
6. Install extension wand and crevice tool in the back of the unit as shown.
7. Remove Pet TurboEraser Tool from packaging. Install on front of vacuum by inserting end upward into the handle. There will be a click when fully installed.
8. The Pet Hair Eraser Tool does not store on-board (see Tools section for usage).
9. Take cord and wrap around the two cord wraps located on the back of the vacuum.



### **Filter assembly**

1. Remove the dirt tank by pushing release button on tank handle and lifting away.
2. Remove instruction tag and discard.
3. Remove foam filter from packaging and install into vacuum, yellow side down.
4. Replace dirt tank back onto vacuum. There will be a click when tank is locked into place.

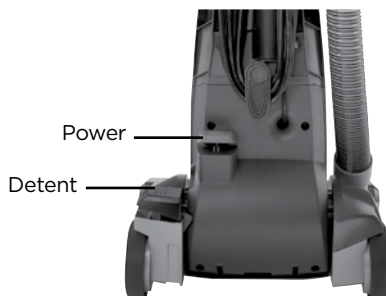


# Operations

Remove cord from unit by twisting cord wrap and plug into outlet.

To power on the vacuum, push the RED POWER SWITCH located near the bottom of the appliance on the back side of the vacuum. Push the pedal on ON (I) to vacuum, and OFF (O) when cleaning is complete.

For normal cleaning mode, push downward on detent pedal with foot and recline the vacuum. For low, hard to reach areas, push the detent pedal again and the vacuum will recline even lower from normal cleaning mode.



## Height Adjustments

Turn dial on powerfoot to adjust to one of 5 height adjustments.

**Lowest Setting:** For low pile carpet and bare floors.

**Medium Setting:** For medium pile carpet.

**Highest Setting:** For high pile and most shag carpet. Adjust to high setting if difficult to push.

**NOTE: For optimal carpet cleaning performance, adjust to the lowest practical setting. If your vacuum is difficult to push, or is pushing larger debris, adjust to the next higher setting.**



## NOTICE:

The floor brush will continue to rotate while you use your vacuum for above floor cleaning. To prevent carpet damage, do not lean on the vacuum or let the power foot tilt forward.

# Operations

## Tools

With the vacuum in upright position, remove the lower hose end from the foot of the vacuum and from both hose clips. Attach desired tool by firmly inserting the tool into the hose end.

### Pet TurboEraser™ Tool

Remove tool by pulling away and downwards from vacuum.

Use rotation brush action for small flat areas such as stairs and cushions. Press gently down and pull towards you in raking motion; too much pressure will cause brush to stop rotating. The brush easily stores on the handle.

**NOTE: The Pet TurboEraser Tool, Pet Crevice Tool, and Pet Hair Eraser Tool are not to be used on pets.**



### Pet Crevice Tool

Remove tool from back of vacuum, it is easier to remove the tool if the cord is removed first. Twist handle to the END side to use as a standard crevice tool to clean corners and tight spaces. Twist handle to the SIDE to open up suction across the rubber fingers to clean upholstery and other large surface areas.



### Extension Wand

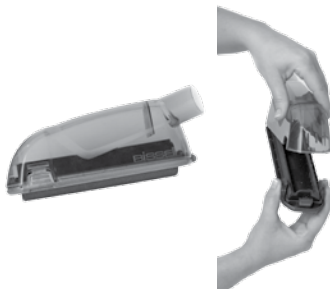
Attach with desired tool for longer reach.

### Pet Hair Eraser Tool

Tool does not store on-board. Connect the hose to use with vacuum or you can use without hose connection.

Grasp handle and move sweeper from side to side, using short strokes. When you hear click, reverse the motion.

Clean inside the dirt bin by pressing on the side tabs gently to open. You can use a damp cloth or towel to clean excess dirt and any excess hair.



### Hard Surface Soleplate Tool

For maximum pickup on hard surfaces, attach the hard surface soleplate tool to the existing soleplate. Push tabs to remove for maximum pickup on carpet.



# Operations

## Empty Dirt Tank

---

For best performance, empty when the dirt reaches the full line on the container.

1. Turn POWER OFF and unplug from outlet
2. Remove tank by pressing the release button on the tank handle.
3. Visually check the pre-motor filter located directly under the dirt tank. If there is debris, follow filter instructions in the maintenance section.
4. Grasp handle on back of the tank with one hand and the top handle with the other.
5. Over a trash container, twist the top handle counterclockwise until the latches release.
6. Pull the top handle piece straight from the dirt tank. Empty contents of dirt tank into trash container, and gently shake the top handle piece to remove build up.

**NOTE: If you notice excess build up around the top of the tank, before removing top piece, gently tap the tank to allow contents to settle.**

7. Place the top handle piece straight downward into the dirt tank. Align the latch arrows and gently twist clockwise. When fully assembled, the tank will click into place.

8. Replace the tank back onto the vacuum – the tank will click into place when fully installed.

3.



5.



7.





# Maintenance & Care

**PLEASE VISIT BISSELL.COM FOR QUICK AND EASY MAINTENANCE VIDEOS.**

To maintain best performance, check and clean your filters regularly. If you notice a decrease in performance check your filters by following these steps. It is recommended to check your filters as often as you check and clean your dryers lint trap.

## Pre-Motor Filter

1. The pre-motor filter is located directly under the dirt tank.
2. Remove dirt tank by pressing release button and remove from vacuum.
3. Grasp filter and remove from the vacuum.
4. While holding over trash, gently separate layers of filter (being careful not to rip filter layers) and shake out excess debris.
5. Filter can be rinsed in warm water.
6. Allow the filter to air dry completely before replacing.
7. If you notice the filter is damaged, reference the replacement parts section to order a new filter.

## Post-Motor Filter

8. The post-motor filter is located on the front of the vacuum near the height adjust knob.
9. Remove filter door by pressing latch downward. It is easiest to have the vacuum fully reclined to access the filter.
10. Remove the filter by grasping the handle on the front of the filter and pulling out from vacuum.
11. The filter can be washed in warm water with mild detergent.
12. Allow the filter to air dry completely before replacing.
13. If you notice the filter is damaged, reference the replacement parts section to order a new filter.
14. Replace filter in unit with handle facing you. Replace the door by hooking the bottom into the grooves and rotate towards unit snapping into place.

## WARNING

To reduce the risk of electric shock, turn power switch off and disconnect plug from electrical outlet before performing maintenance or troubleshooting checks.

## WARNING

Do not operate vacuum with damp or wet filters or without all filters in place.

3.



4.



9.



10.



14.



# Maintenance & Care

## Checking the rotating floor brush roll and drive belt

Check your vacuum's rotating floor brush roll and drive belt regularly for wear or damage.

1. Turn power OFF. Unplug vacuum cord from electrical outlet.
2. Place handle in low position, remove hose end from foot and turn the vacuum over so bottom side is facing up.
3. Using a long Phillips screwdriver remove the 7 screws and rotate unit back to front.

**NOTE: For ease of screw removal and replacement, use a magnetic Phillips screwdriver. You also may remove the height adjustment plate by gently prying each latch on the sides free from the foot and rotate out to remove.**

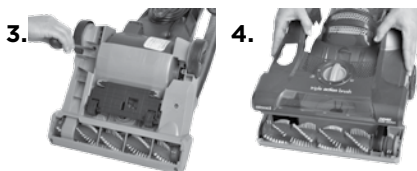
**If removed, replace the height adjustment plate by aligning the ends opposite of the wheel to the latches and push down**

4. Lift top over straight up and set aside
  5. Grasp rotating floor brush at both ends and lift up and away to remove.
  6. Clean strings, hair and other debris from rotating floor brush, motor pulley and drive belt areas.
- Check drive belt for wear, cuts or stressed areas.  
Check air passageway for obstructions.  
Remove debris from this area.

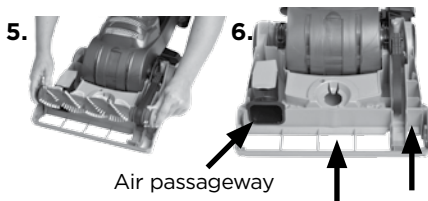
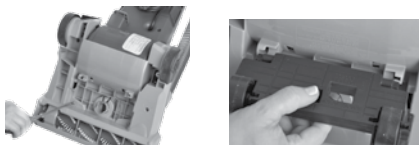
Replacement belts, if needed, can be ordered on [BISSELL.com](http://BISSELL.com).

## WARNING

To reduce the risk of electric shock, turn power switch off and disconnect plug from electrical outlet before performing maintenance or troubleshooting checks.



### REMOVING HEIGHT ADJUSTMENT PLATE



# Maintenance & Care

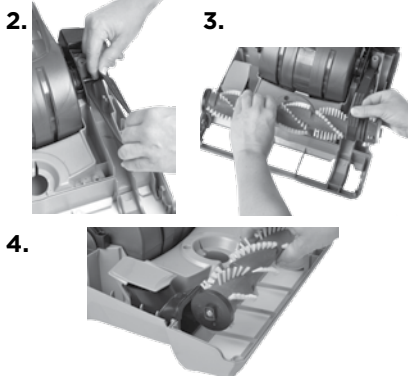
## Replacing the drive belt

1. Turn power OFF. Unplug vacuum cord from electrical outlet.
2. With rotating brush removed (steps 1-4 of checking rotating floor brush and drive belt), grasp old drive belt and remove from motor pulley. Discard old drive belt.
3. Place new drive belt over motor pulley and stretch other end over rotating floor brush in the space between the bristles.
4. Place ends of rotating floor brush down into slots.
5. Turn rotating floor brush by hand in the direction of the motor pulley. If properly installed, drive belt will center itself on rotating brush.
6. Reposition top cover and rotate on back side.

**NOTE: It is recommended to replace screws near height adjustment plate first.**

## **WARNING**

To reduce the risk of electric shock, turn power switch off and disconnect plug from electrical outlet before performing maintenance or troubleshooting checks.



# Maintenance & Care

## Cleaning the dirt tank and separator

1. Turn power OFF. Unplug vacuum cord from electrical outlet.
2. Empty the dirt tank by following the instructions in the previous Operations section.
3. With top handle piece removed you can wash the dirt tank in warm water with mild detergent. Allow tank to air dry completely before reassembling.
4. Clear any debris from the top piece. Grasp top handle and the round separator piece and twist counterclockwise to release. The separator can be washed in warm water with mild detergent. Make sure there is no dirt build up between the openings around the separator. Allow top handle piece to dry completely before reassembling.
5. Replace the separator back into the top handle piece by aligning the tabs and turning clockwise to lock into position.
6. Place the top handle piece straight downward into the dirt tank. Align the latch arrows and gently twist clockwise. When fully assembled, the tank will click into place.

## WARNING

To reduce the risk of electric shock, turn power switch off and disconnect plug from electrical outlet before performing maintenance or troubleshooting checks.

3.



4.



6.



# Maintenance & Care

## Clearing a clog

Low suction or poor pickup may be due to a clog in the vacuum. If you notice a change in the sound of the vacuum motor, check for clogs.

1. Turn power OFF. Unplug vacuum cord from electrical outlet.
2. Empty and clean dirt tank, ensuring there is no dirt around the separator
3. With dirt tank removed, check the suction inlet located on the body of the vacuum, remove any debris.
4. Grasp the upper hose end and twist elbow counterclockwise to remove. Remove the lower hose end by gently pulling out of vacuum base.
5. Unclog with long, narrow object such as broom stick.
6. If the clog persists, follow steps for checking rotating floor brush on page 10 and inspect the air passageway for obstructions.

## **WARNING**

To reduce the risk of electric shock, turn power switch off and disconnect plug from electrical outlet before performing maintenance or troubleshooting checks.

3.



4.



# Troubleshooting



## WARNING

To reduce the risk of electric shock, turn power switch off and disconnect plug from electrical outlet before performing maintenance or troubleshooting checks.

Problem	Possible causes	Remedies
<b>Vacuum cleaner won't turn on</b>	Power cord not plugged in	Check electrical plug
	Blown fuse/tripped breakers in home	Check/replace fuse or reset breaker
	Damaged cord	Refer to a BISSELL authorized service center for repair or replacement
<b>Vacuum cleaner won't pick up dirt</b>	Incorrect height adjustment	Adjust powerfoot to correct height setting
	Hose not attached to suction opening	Grasp quick reach handle and firmly push hose wand onto the suction opening
	Crack or hole in hose	Check hose and replace if needed
	Broken or worn drive belt	Replace drive belt, see page 11
	Rotating floor brush bristles worn	Replace brush
	Rotating floor brush jammed	Remove brush and clean debris from brush ends
	Clog in vacuum	Follow instructions on page 12 for clearing clogs
	Dirt container full	Empty dirt container
	Dirt container or upper tank not installed properly	Position correctly and lock in place
	Filters are dirty	Check and clean pre-motor and post-motor filters, see pages 8 & 9
<b>Tools won't pick up</b>	Crack or hole in hose	Check hose and replace if needed
	Clog in vacuum	Follow instructions on page 12 for clearing clogs
	Dirt container full	Empty dirt container
	Dirt container or upper tank not installed properly	Position correctly and lock in place
	Filters are dirty	Check and clean pre-motor and post-motor filters
<b>Visible dirt escaping from cleaner</b>	Dirt container full	Empty dirt container
	Filters missing or installed incorrectly	Check pre-motor and post-motor filters for correct installation

**Please do not return this product to the store.**










Other maintenance or service not included in the manual should be performed by an authorized service representative.

Thank you for selecting a BISSELL product.

**For any questions or concerns, BISSELL is happy to be of service. Contact us directly at 0344 888 6644.**

# Replacement Parts

These items are available for your BISSELL PowerLifter Vacuum.  
Call 1-800-237-7691 or visit [www.bissell.com](http://www.bissell.com)

PART #	PART NAME		PART #	PART NAME	
1604127	Pre-Motor Foam Filter		1604117	Pet Hair Eraser Tool	
1604130	Post Motor Filter		203-1093	Style 7 Belt	
1604112	8ft Hose		1604113	Pet Crevice Tool	
1604114	Extension Wand		1604116	Pet TurboEraser Tool	
1604938	Hard Surface Soleplate Tool				



# Consumer Guarantee

This Guarantee only applies outside of the USA and Canada. It is provided by BISSELL International Trading Company BV ("BISSELL").

This Guarantee is provided by BISSELL. It gives you specific rights. It is offered as an additional benefit to your rights under law. You also have other rights under law which may vary from country to country. You can find out about your legal rights and remedies by contacting your local consumer advice service. Nothing in this Guarantee will replace or lessen any of your legal rights or remedies. If you need additional instruction regarding this Guarantee or have questions regarding what it may cover, please contact BISSELL Consumer Care or contact your local distributor.

This Guarantee is given to the original purchaser of the product from new and is not transferable. You must be able to evidence the date of purchase in order to claim under this Guarantee.

## Limited Two-Year Guarantee

Subject to the \*EXCEPTIONS AND EXCLUSIONS identified below, BISSELL will for two years from the date of purchase by the original purchaser repair or replace (with new or remanufactured components or products), at BISSELL's option, free of charge, any defective or malfunctioning part or product.

BISSELL recommends that the original packaging and evidence of the date of purchase be kept for the duration of the Guarantee period in case the need arises within the period to claim on the Guarantee. Keeping the original packaging will assist with any necessary re-packaging and transportation but is not a condition of the Guarantee.

If for your product is replaced by BISSELL under this Guarantee, the new item will benefit from the remainder of the term of this Guarantee (calculated from the date of the original purchase). The period of this Guarantee shall not be extended whether or not your product is repaired or replaced.

### \*EXCEPTIONS AND EXCLUSIONS FROM THE TERMS OF THE GUARANTEE

This Guarantee applies to products used for personal domestic use and not commercial or hire purposes. Consumable components such as filters, belts and mop pads, which must be replaced or serviced by the user from time to time, are not covered by this Guarantee.

This Guarantee does not apply to any defect arising from fair wear and tear. Damage or malfunction caused by the user or any third party whether as a result of accident, negligence, abuse, neglect, or any other use not in accordance with the User Guide is not covered by this Guarantee.

An unauthorised repair (or attempted repair) will void this Guarantee whether or not damage has been caused by that repair/attempt.

Removing or tampering with the Product Rating Label on the product or rendering it illegible will void this Guarantee.

SAVE AS SET OUT BELOW BISSELL AND ITS DISTRIBUTORS ARE NOT LIABLE FOR ANY LOSS OR DAMAGE THAT IS NOT FORESEEABLE OR FOR INCIDENTAL OR CONSEQUENTIAL DAMAGES OF ANY NATURE ASSOCIATED WITH THE USE OF THIS PRODUCT INCLUDING WITHOUT LIMITATION LOSS OF PROFIT, LOSS OF BUSINESS, BUSINESS INTERRUPTION, LOSS OF OPPORTUNITY, DISTRESS, INCONVENIENCE OR DISAPPOINTMENT. SAVE AS SET OUT BELOW BISSELL'S LIABILITY WILL NOT EXCEED THE PURCHASE PRICE OF THE PRODUCT.

BISSELL DOES NOT EXCLUDE OR LIMIT IN ANY WAY ITS LIABILITY FOR (A) DEATH OR PERSONAL INJURY CAUSED BY OUR NEGLIGENCE OR THE NEGLIGENCE OF OUR EMPLOYEES, AGENTS OR SUBCONTRACTORS; (B) FRAUD OR FRAUDULENT MISREPRESENTATION; (C) OR FOR ANY OTHER MATTER WHICH CANNOT BE EXCLUDED OR LIMITED UNDER LAW.

## Consumer Care

**If your BISSELL product should require service or to claim under our Limited Two-Year Guarantee, please visit:**

**Website or E-mail:**

[www.UK.BISSELL.com](http://www.UK.BISSELL.com)

**For UK inquiries:**

Telephone: 0344 888 6644

Monday - Thursday 9am - 5pm

Friday 9am - 4pm

BISSELL Homecare (Overseas) Inc.

Ground Floor

226 Berwick Avenue

Slough, Berkshire, SL1 4QT

United Kingdom

**Visit the BISSELL website:  
[www.BISSELL.com](http://www.BISSELL.com)**

When contacting BISSELL, have model number of cleaner available.

Please record your Model Number: \_\_\_\_\_

Please record your Purchase Date: \_\_\_\_\_

**NOTE: Please keep your original sales receipt. It provides proof of the date of purchase in the event of a Guarantee claim. See Guarantee for details.**



©2014 BISSELL Homecare, Inc.  
Grand Rapids, Michigan  
All rights reserved. Printed in China  
Part Number 160-4936 Rev 11/14  
Visit our website at: [www.BISSELL.com](http://www.BISSELL.com)

