

User Manual for your

**BAH61&BAH91**  
**BAH60&BAH90**  
**BAH93CG&BAH93CGIS**  
**BAH94FG&BAH94FGIS**

# Cooker Hood

***NOTE:*** *This User Instruction Manual contains important information, including safety & installation points, which will enable you to get the most out of your appliance. Please keep it in a safe place so that it is easily available for future reference.*

# CONTENTS

**YOUR COOKER HOOD'S SPECIFICATIONS .....3**

**IMPORTANT SAFETY INFORMATION.....4-5**

**CARING FOR THE ENVIRONMENT.....6**

**USING YOUR COOKER HOOD .....7-10**

**MAINTAINING AND CLEANING YOUR COOKER HOOD .....11-14**

**INSTALLATION INSTRUCTIONS .....15-25**

**ELECTRICAL CONNECTION.....15**  
**INSTALLING THE COOKER HOOD.....16-18**  
**FITTING THE CHIMNEY.....19-21**  
**INSTALLATION NOTES – EXTRACTION / PURIFYING VERSION .....21**  
**NOTE ON INSTALLING THE VERSION WITH LOWER BRACKET....22-25**

***TROUBLESHOOTING .....26***

**CONDITIONS OF GUARANTEE.....27-28**

**HT MOD 04/10/06**

*Dear Customer,*

Congratulations on purchasing your new product from Think Appliances.

To register your parts and labour warranty (some conditions apply please refer to your warranty card for more details) please contact our Customer Care team on:

**1800 444 357**

Our Customer Care centre is there to ensure you get the most out of your appliance. For example, should you want to learn more about recommended cooking temperatures, the various cooking functions available, how to set and program your LED clock, and importantly taking care of your appliance when cleaning, please call us because we are here to help you.

It is important that you read through the following use and care manual thoroughly to familiarize yourself with the installation and operation requirements of your appliance to ensure optimum performance.

We also carry a complete range of spare parts for all Think products. For all your spare parts enquiries please contact our team at Pronto Parts on:

**1300 306 973**

Again, thank you for choosing an appliance brought to you by Think Appliances and we look forward to being of service to you.

Kind regards

*Management*

Think Appliances

## Specifications of your Cooker Hood

### ***Congratulations on purchasing a Cooker Hood!***

To fully enjoy using your appliance long into the future, please firstly familiarise yourself with its specifications, safety advice and operational instructions included in this manual. You will also need this manual to ensure that your Cooker Hood has been installed properly.

Your cooker hood can work either as an extraction fan or as an air recirculator. Whichever mode you choose, you will need to bear in mind that the extractor calls for ducting (not included) to be worked from the exhaust of your fan, while the recirculation function will require the replacement of carbon filters.

Please see the installation section of this manual for details.

Model	Width (mm)	control	light	Extraction Capacity	Carbon filter
BAH61	600	Electronic button	2*3W LED	500	S1
BAH91	900	Electronic button	2*3W LED	750	S1
BAH60	600	Push button	2*20W halogen	500	S1
BAH90	900	Push button	2*20W halogen	750	S1
BAH93CG	900	LCD electronic	2*3W LED	750	S1
BAH94FG	900	LCD electronic	2*3W LED	750	S1
BAH94FGIS	900	LCD electronic	2*3W LED	750	SQ1
BAH93CGIS	900	LCD electronic	4*3W LED	750	SQ2

**Important Safety Information: Please Read this before installing & using.**

- *Any installation work must be carried out by a qualified electrician or competent person.*
- *The hood must be installed in accordance with the installation instructions and all measurements followed.*
- *There shall be adequate ventilation of the room when the range hood is used at the same time as appliances burning gas or other fuels (not applicable to appliances that only discharge the air back into the room) Regulations concerning the discharge of air have to be fulfilled.*
- *If the cooker hood is installed for use above a gas appliance then the provision for ventilation must be in accordance with AS5601 AS4551 and any applicable Building Regulations.*
- The air must not be discharged into a flue that is used for exhausting fumes from appliances burning gas or other fuels (not applicable to appliances that only discharge the air back into the room).
- It is dangerous to alter the specifications or to modify this product in any way. Do not tamper with it or attempt to alter it in the attempt to customise it further.
- When installing the hood, ensure that the following recommended distances are being observed between the cooker top and the bottom of the cooker hood:



- ✓ Electric cookers:  
700 mm
- ✓ Gas cookers:  
700 mm
- ✓ Coal/ oil cookers:  
800 mm

**\* NOTE - DO NOT SET YOUR COOKER HOOD LESS THAN 700mm ABOVE YOUR COOKER!**

- CAUTION: Accessible parts may become hot when used with cooking appliances.
- When installed between adjoining wall cabinets, the cabinets must not overhang the hob.
- The edges of the cooker hood are sharp – be mindful of this as you handle your appliance, especially during installation and cleaning. **DO NOT CLEAN IN BEHIND THE GREASE FILTERS!**
- Refer to Cleaning section for the details concerning the method and frequency of cleaning. There is a fire risk if cleaning is not carried out in accordance with the instructions;
- If the room where the cooker hood is to be used contains a fuel burning appliance such as a central heating boiler then its flue must be of the sealed or balanced flue type.

**Important Safety Information: Please read this before installing & using.**

- If other types of flue or appliances are fitted, ensure that there is an adequate supply of air in the room.
- When the hood is being used in its extractor function, ensure that the ducting is fire retardant and that there are no bends sharper than 90 degrees as this will reduce the efficiency of the hood.
- Ensure the ducting for the extractor function has the same diameter as the outlet hole all the way through.
- *Keep young children from using, playing with or tampering with the cooker hood. Older children and infirm persons should be supervised if they are using the cooker hood.*
- *Your cooker hood is for domestic use only.*
- *Please dispose of the packing material carefully – children are especially vulnerable to it.*
- *Dirty oil is an even greater fire risk.*
- *and pans when cooking on a gas cooker.*
- *The manufacturer refuses to accept any responsibility for damages arising to the hood or its catching on fire from failure to observe fire safety advice in these instructions.*
- *Remember that when in extraction mode, your cooker hood is removing air from your room. Ensure that proper ventilation measures are being observed. Note that it removes odours from your room, not steam.*
- Warning - Always ensure that the cooker hood has been disconnected from the power supply before carrying out any work on the hood, including replacing light bulbs.
- If the supply cord is damaged it must be replaced by the manufacturer or service agent in order to avoid hazard.
- ☒ Do not connect the ducting system of this appliance to any existing



ventilation system which is being used for any other purpose.

- ☒ Do not install above a cooker with a high level grill.
- ☒ *Never leave frying pans unattended during use as overheated fats and oils might catch fire.*
- ☒ *Do not leave naked flames under the cooker hood.*

- ☒ Do not attempt to use the cooker hood if it is damaged in any way.  
*Never attempt to use it without the grease filters fitted or if the filters are excessively greasy!*

- ☒ *Never flambé cook under this cooker hood.*

### Environmental Note

~~There must be scrupulously abided by so as to avoid the risk of fire.~~


~~THE MANUFACTURER DECLINES ALL RESPONSIBILITY IN THE EVENT OF FAILURE TO OBSERVE THE INSTRUCTIONS GIVEN HERE FOR INSTALLATION, MAINTENANCE AND SUITABLE USE OF THE HOOD.~~



**Note:** Before discarding an old appliance, switch off and disconnect it from the power supply. Cut off and render any plug useless. Cut the cable off directly behind the appliance to prevent misuse. This should be undertaken by a competent person.

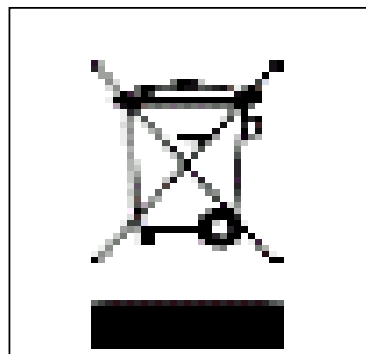
## **CONFORMITY TO W.E.E.E. DIRECTIVE**

This appliance is marked according to the European directive 2002/96/EC on Waste electrical and Electronic Equipment (WEEE). By ensuring this product is disposed of correctly, you will help prevent potential negative consequences for the environment and human health, which could otherwise be caused by inappropriate waste handling of this product.

The symbol  on the product, or on the documents accompanying the product, indicates that this appliance may not be treated as household waste. Instead it shall be handed over to the applicable collection point for the recycling of electrical and electronic equipment.

Disposal must be carried out in accordance with local environmental regulations for waste disposal.

For more detailed information about treatment, recovery and recycling of this product, please contact your local city office, your household waste disposal service or the shop where you purchased the product.



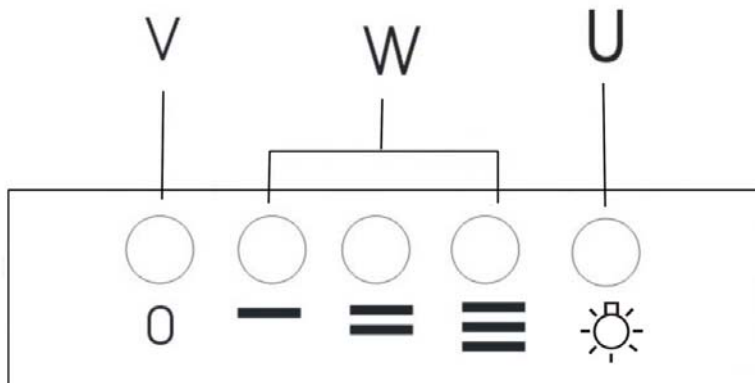
### **Using your Cooker Hood:**

To use your cooker hood(PUSH BUTTON)



- 1) Make sure it has been properly installed.
- 2) Find the CONTROL PANEL. It is located at the front of the canopy, to the right.
- 3) The CONTROL PANEL contains buttons as shown in the Figure below. These perform separate functions. You will need to understand what these buttons do before you attempt to use your cooker hood.

**\* Note: The hood should be switched on at least as soon as you start cooking.**



**KEY**

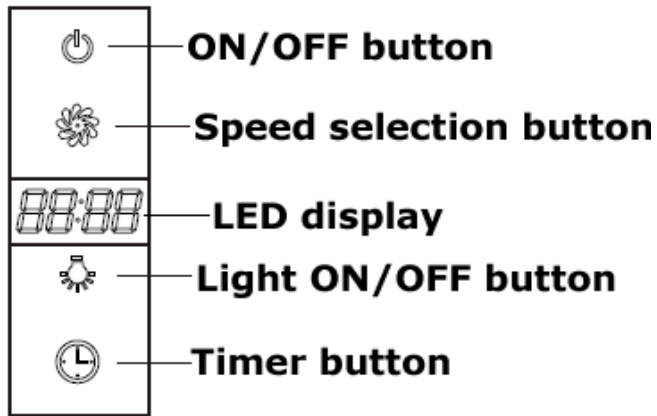
**'V' - Motor Off button**

**'W' - Motor operation:**

**- = low speed, = = mid speed, ≡ = high speed.**

**'U' – Light 'on/off' button-This button controls the light**

**To use your cooker hood (LCD ELECTRONIC CONTROL)**



Before operating the hood, make sure that it has been installed by a suitably qualified person, as per the information contained in installation instructions.

1) Find the control panel, which is located in the front middle of the canopy.

2) There are several buttons on the control panel, which perform separate functions.

#### **Setting the time of day**

1) After the appliance is connected to your mains supply, press the ON/OFF button to switch the hood on, the LED display backlight will switch on. If no other button is pushed within 30 seconds, then the backlight will go out.

2) Press and hold down the timer button for a few seconds, the hour section of the LED display will flash.

3) Press the speed selection button to increase the number shown on the LED display.

4) Press the light ON/OFF button to decrease the number shown on the LED display.

5) The clock on the cooker hood is 24 hour, so the largest hour number that can be set is 23.

6) Press the timer button again to confirm the hour time; the minute section of the LED display will then flash.

7) Use the same buttons as before to adjust the number shown on the LED display.

8) Press the timer button for a third time and this will confirm the time of day setting.

### **Setting the fan speed**

1) Press the ON/OFF button to switch the hood on; the LED display backlight will switch on. If no other button is pushed within 30 seconds, then the backlight will go out.

2) The motor has three speeds, low, medium and high.

3) Press the speed selection button once and the hood will run at low speed.

4) Press the speed selection button again and the hood will run at medium speed.

5) Press the speed selection button again and the hood will run at high speed.

6) If you press the speed selection button whilst the hood is running at high speed, then the hood will return to running at low speed.

7) To switch the fan off, press the ON/OFF button.

8) When you next switch on the cooker hood using the ON/OFF button, it will remember the operating speed that it was last used at.

### **The cut off timer**

1) Whilst the cooker hood is in use, if you press the timer button the number "12:00" will appear on the LED display.

2) This indicates that the hood will run for a further 12 minutes at the current fan speed.

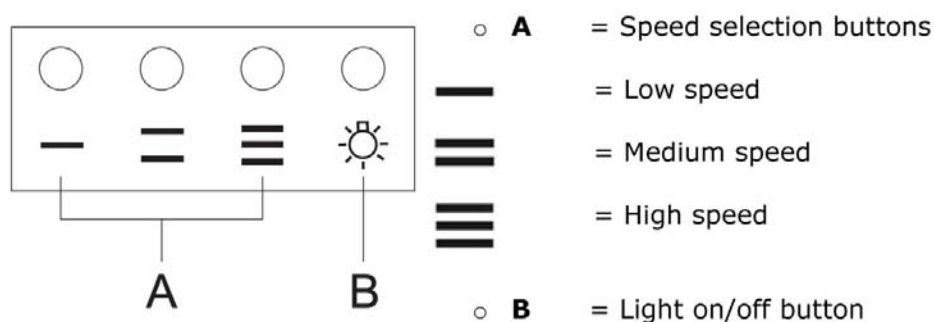
3) Once the 12 minute period has elapsed, the cooker hood will switch itself off.

4) It is useful to use this feature when you have finished cooking. You can press the timer button and the hood will run on to extract any remaining odours and then switch itself off without you needing to return to the kitchen.

### To use your cooker hood (Electronic button)

o You should use a good quality stainless steel cleaner and polish on ALL of the stainless steel areas of your cooker hood, before it is used for the first time.

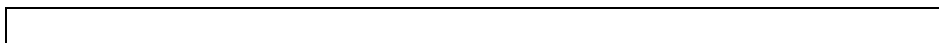
o This will help to leave a silicone water-resistant film to protect the stainless steel surfaces.



o Before operating the hood, make sure that it has been installed by a suitably qualified person, as per the information contained in installation instructions.

o Find the control panel, which is located in the middle of the main body of the cooker hood.

o There are several buttons on the control panel, which perform separate functions (see line drawing on previous page).



PLEASE NOTE THAT YOUR COOKER HOOD CAN BE USED EITHER IN RECIRCULATION MODE OR IN EXTRACTION MODE. TO USE THE HOOD IN RECIRCULATION MODE, YOU WILL NEED TO FIT THE CARBON FILTERS.

## Cleaning your Cooker Hood:

**IMPORTANT:** *Before cleaning, always ensure that you have switched your cooker hood OFF at the omni-polar switch, set at the wall from the cable:*

## Cleaning

- Clean the external parts with mild liquid detergents on a damp cloth.
- Never use abrasive powder, corrosive solvents or brushes.
- Never insert pointed objects into the motor's protective grid.
- Only clean the control panel and filter grill with a damp cloth and delicate detergents.
- Be sure to replace the carbon filters at the recommended intervals. Build up could cause a fire hazard.
- Never take out the grease filters and attempt to clean the space above where they are set.

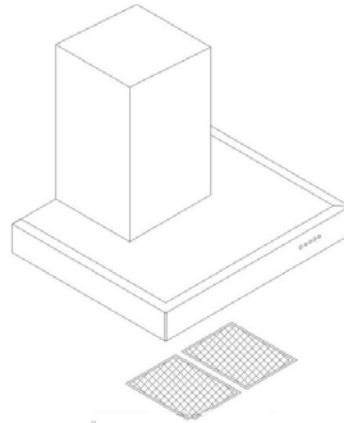
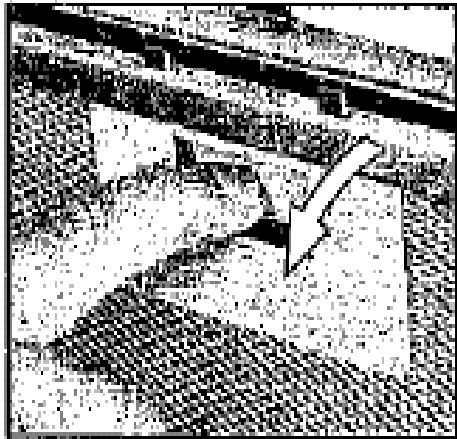
## Anti-Grease Grille

- Your cooker hood includes an anti-grease grille which helps absorb vapour-suspended grease particles to protect your kitchen & furniture from greasy residues.
- The metal grille may become inflammable if it becomes saturated with greasy residue.

- ✓ To prevent this fire hazard, the grille should be cleaned regularly (depending on use) every 10-15

days and at least once a month in hot water with normal washing-up detergent. **DO NOT USE A DISHWASHER TO ACHIEVE THIS.**

### Maintenance - Cleaning the Anti-grease Filters



First remove the grille by pulling down on it. Undo the side catches.

*You can now clean the anti-grease filter grilles.*

- ✓ Soak them for about one hour in hot water with a grease-loosening detergent then rinse off thoroughly with hot water.
- ✓ Repeat the process if needed. Refit the grease grille once it has dried.
- ✓ Refit the grease grilles when dry.
- ✓ **PLEASE NOTE: DISCOLOURATION OF THE GREASE FILTER CAN TAKE PLACE WHEN CLEANED IN A DISHWASHER, ETC. Do not worry about the slight**

**discolouration of the grille –its performance won't be affected.**

***Let the filter grilles dry thoroughly before refitting them.***

### **Maintenance – Changing the Light Bulb and Carbon Filter**

#### **a) Changing the light bulb**

##### **a) Changing the light bulb**

- 1) Before changing the light bulb, ensure that the appliance is not live (i.e., ensure that you have switched it off at the omni-polar switch on the wall switch plate.).**
- 2) Open the grease filter support grill (see previous page).**
- 4) Find the bulb in its position.**
- 4) Change the bulb using only olive-shaped spares.**
- 5) Replace the grease filter support grill.**

**\* PLEASE NOTE - Defective bulbs should be replaced immediately.**

- ✓ **Replace the metal anti-grease filters.**

**Installing / Changing the Carbon F**

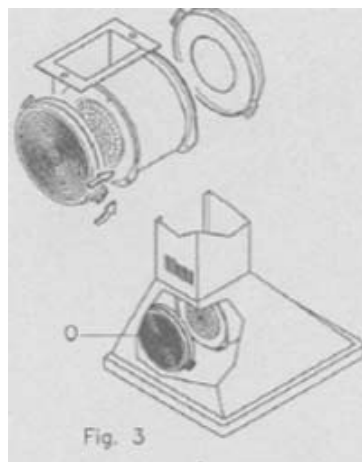
## **Installing / Changing the Carbon Filter.**

Your Cooker Hood uses a pair of CARBON FILTERS to purify the air for the air recirculation function.

You will find that the filters will attach to both sides of the fan motor (please see figures at bottom of page).

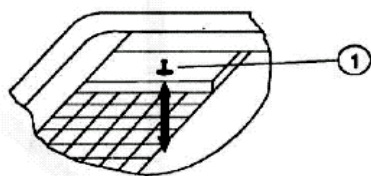
The active carbon filters must be replaced regularly, at least once every three months, to allow normal operation.

Before starting to fit the carbon filter, turn the omni-polar switch off at the wall.

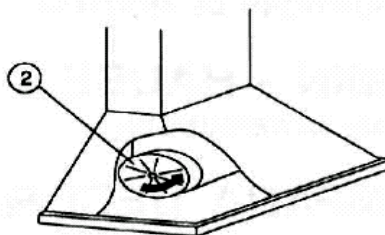


### **CHANGING THE CARBON FILTER**

- 1) Press the handle of the metal grease filter towards the rear part of the unit until it is released from the front housing, and remove it by pressing downwards (Fig. 2 - below).
- 2) Remove the old carbon filters by twisting them anticlockwise until they unlatch from the sides of the motor.
- 3) Place the new carbon filters (which have two fixing tongues), turning clockwise so that the tongues latch onto the motor's sides. (Fig. 3 - above).



**FIG. 2**



- 4) Reposition the anti-grease metallic filter grilles.



## INSTALLATION INSTRUCTIONS

Before installation and usage, read all the instructions and make sure that the voltage (V) and the frequency (Hz) indicated on the identification plate (found inside your Cooker Hood) and all the data inside the appliance are exactly the same as the voltage and frequency in your home.

**NOTE:** The manufacturer declines all responsibility in the event of failure to observe all the accident-prevention regulations in force which are necessary for normal use and regular operation of the electric system.



### ELECTRICAL CONNECTION

Your cooker hood is intended for fitted with power cord & plug for connection to power outlet.

- The power cable must be connected to the terminals marked L (live) and N (neutral) in the hood and fixed with a cable clamp.
- The cooker hood's power cable must be fitted upstream from the electrical connection using an omni-polar switch with a contact distance of at least 3mm.

**NOTE: WARNING – THIS APPLIANCE MUST BE EARTHED.** It should only be connected by a competent person using the 10A plug and a suitable switched 10A GPO.  
See the bottom picture on right – wire diagram.

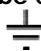
We recommend that the appliance is connected by a qualified electrician who will comply with local regulations. The wires in the mains lead are coloured in accordance with the following code:

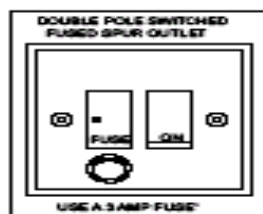
**Blue= Neutral, Brown = Live, Green/Yellow = Ground**

**If you can only find two wires in the cable (blue and brown), neither must be connected to the Earth terminal!**

- **As the colours of the wires in the appliance's mains lead may not correspond with the coloured markings identifying the terminals in your spur box, please proceed as follows:**

- 1) The BLUE WIRE must be connected to the terminal marked "N" (Neutral), or coloured Black
- 2) The BROWN WIRE must be connected to the terminal marked "L" (LIVE), or coloured Red
- 3) The Green/Yellow wire must be connected to the terminal marked "E" or

 (Earth)(Fig 7)



## INSTALLATION INSTRUCTIONS – Installing your Cooker Hood

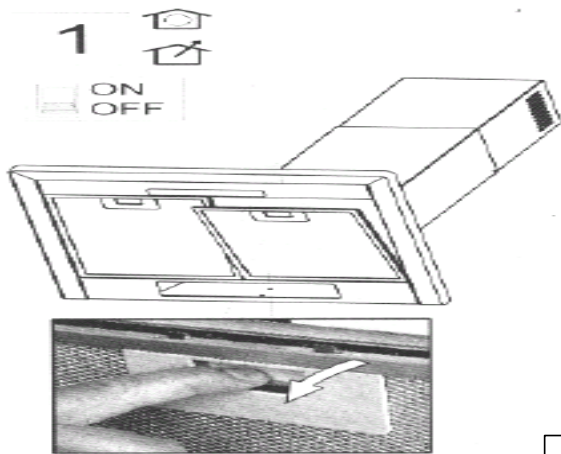


**PLEASE NOTE THAT YOU WILL HAVE TO DECIDE BEFORE INSTALLING YOUR COOKER HOOD THAT YOU CAN ADAPT IT AS AN EXTRACTION FAN. PLEASE SEE PAGE 18 NOW TO UNDERSTAND CRUCIAL DIFFERENCES IN THESE.**

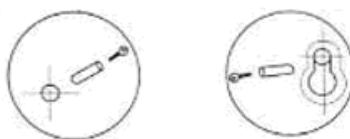
- ⊗ *The cooker hood must not be fitted above stoves with a radiant top plate.*
- ⊗ *We recommend that at least two people install this hood.*

**NOTE:** Your Cooker Hood should only be fitted on a wall. Do NOT position it any less than 700 mm (70 cm) above the hob.

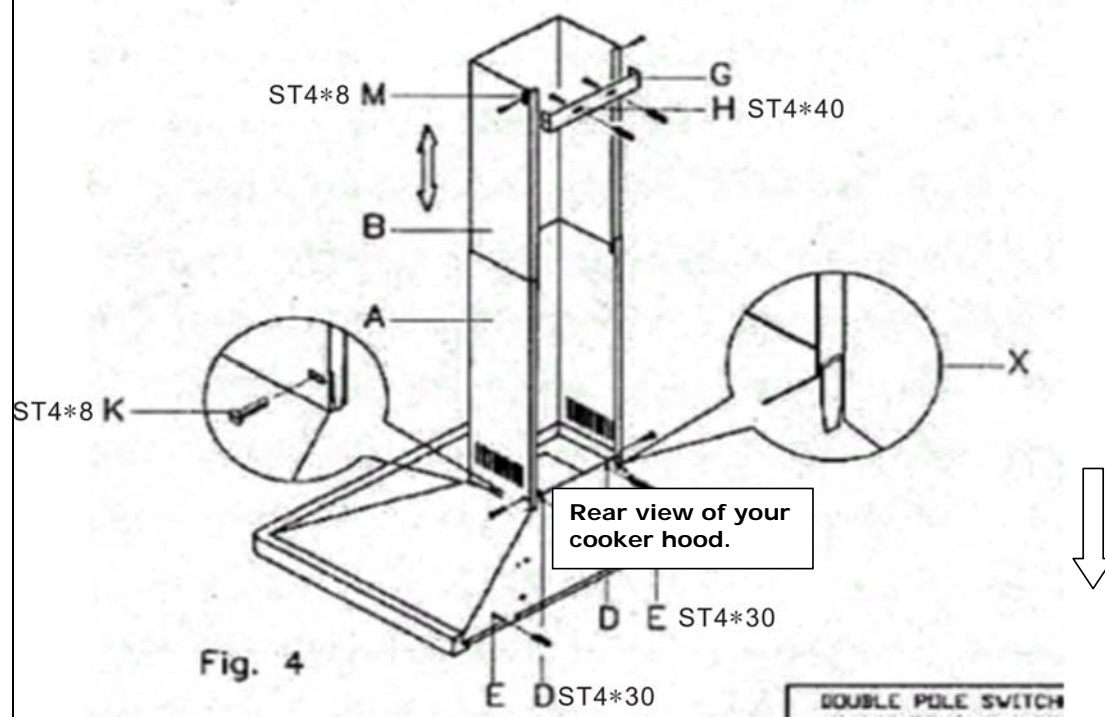
- 1) Remove the metal anti-grease filters  
(See figure at right).



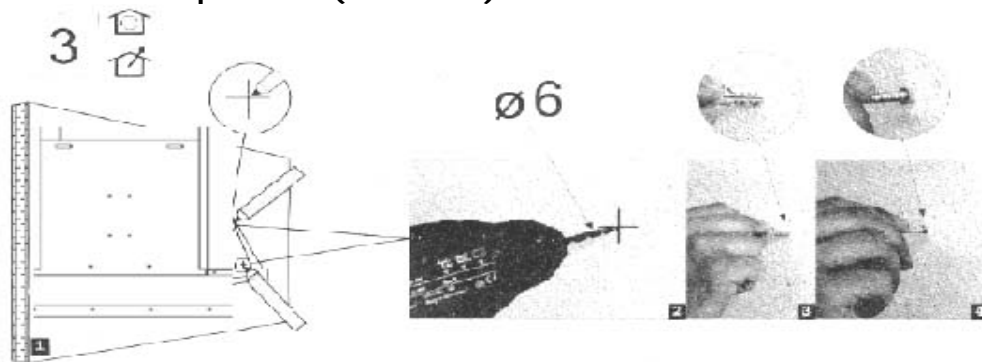
- 2) Position the hood against the wall and mark the position of the support holes that are to be drilled as shown in the figure below. These support holes can be found on Fig. 4 on next page marked as 'D' with the anchoring holes marked as 'E' (Fig. 4 on next page). If your hood comes with an attached jig, use that as a guide to make the marks for the screw holes.



## INSTALLATION INSTRUCTIONS – Attaching the Hood

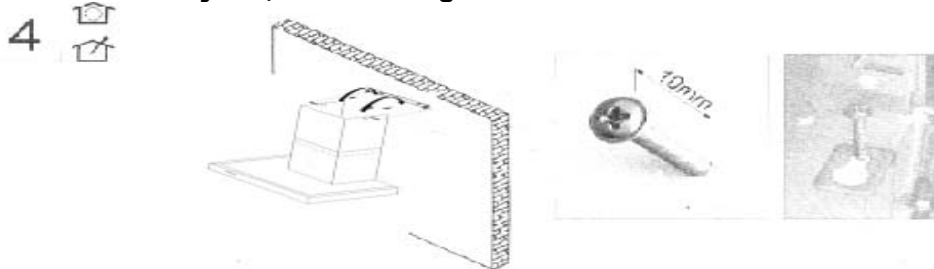


3) Using a drill bit with a 6 mm diameter, make holes in the wall where you have marked these positions (see below).



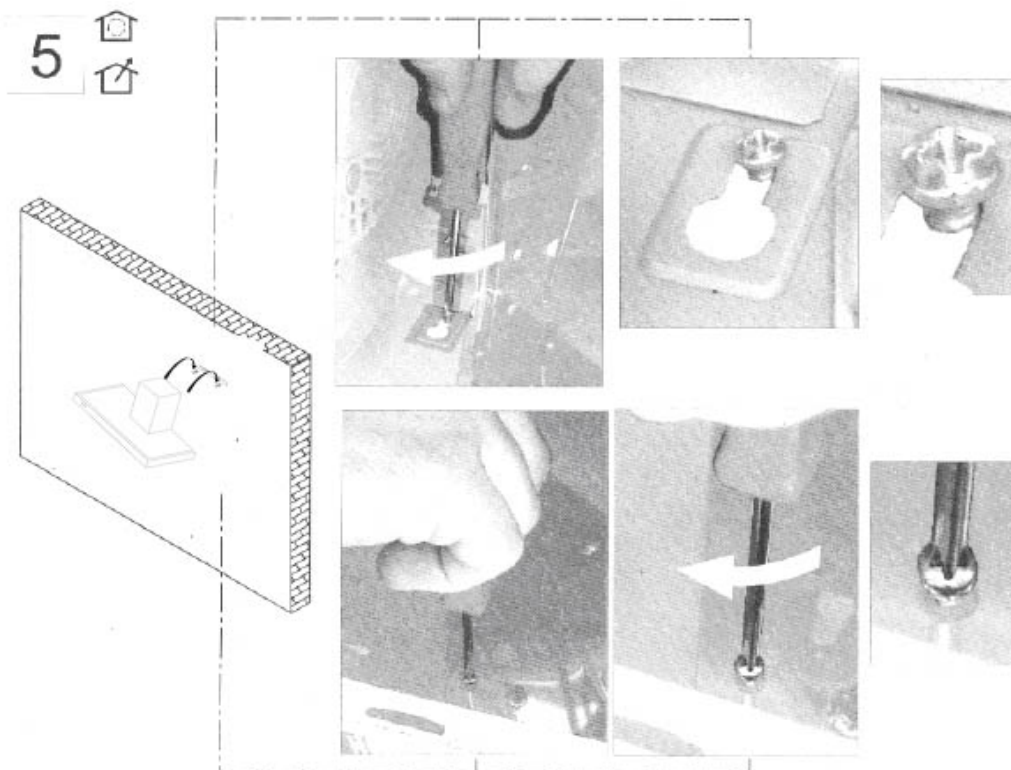
## INSTALLATION INSTRUCTIONS – Attaching the Hood

4) Insert the expansion fixings (rawlplugs) in the holes and then screw the support screws halfway in (see below figure, at



right).

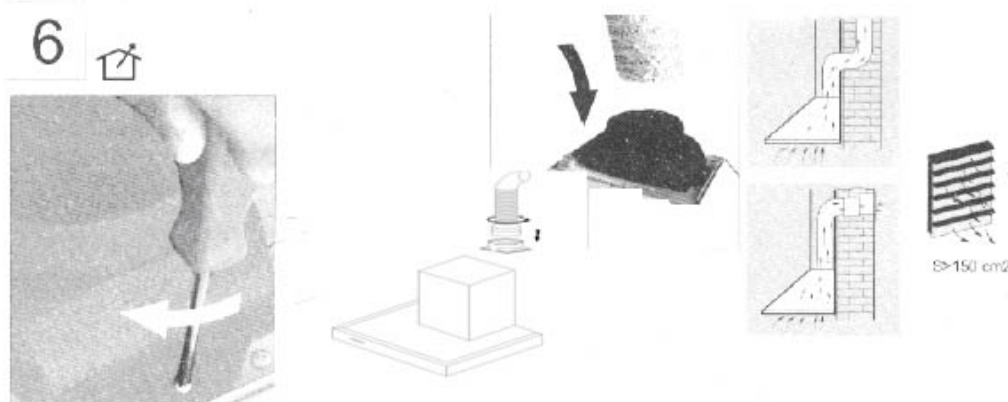
5) Hook the hood onto the screws (see above figure) and fasten it onto the wall, tightening the support and anchoring screws the rest of the way in (next page, at top.)



6) (EXTRACTION FUNCTION ONLY) Connect the coupling to the top of the cooker hood (see below). Then connect the discharge pipe to the coupling as shown below. Remember that your ducting will have to match the

## INSTALLATION INSTRUCTIONS – Fitting the Chimney

specifications shown in the notes on Extraction / Air Purifier (Recirculation) Modes on p.18.

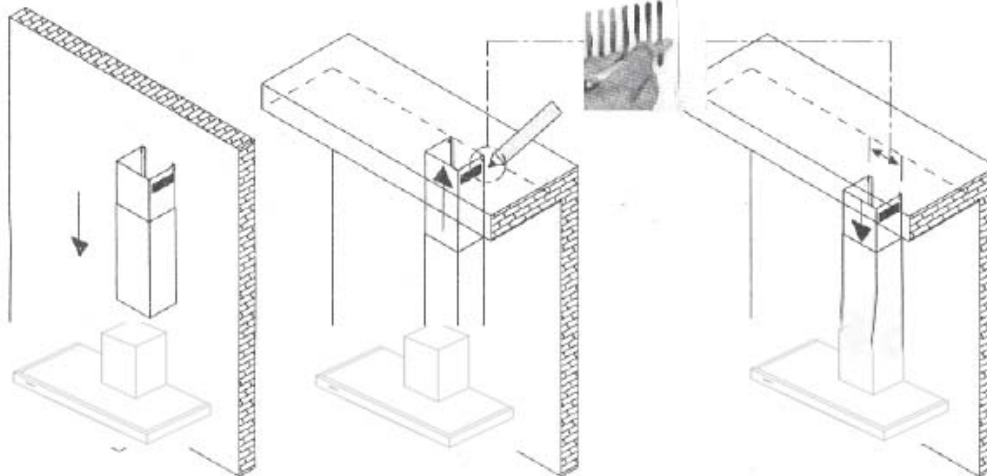


**FITTING THE PIPE –** Once your Cooker Hood has been installed, you can now fit the pipe.

- 
- Fig. 4
- DOUBLE POLE SWITCH

- ## INSTALLATION INSTRUCTIONS – Fitting the Chimney

- |   |   |
|---|---|
| 7 | <br> |
|---|---|

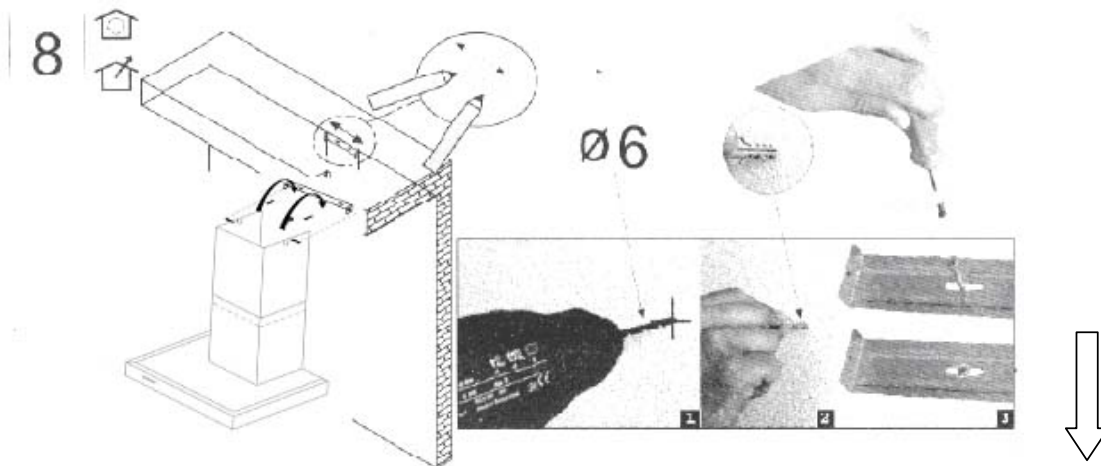


- 22

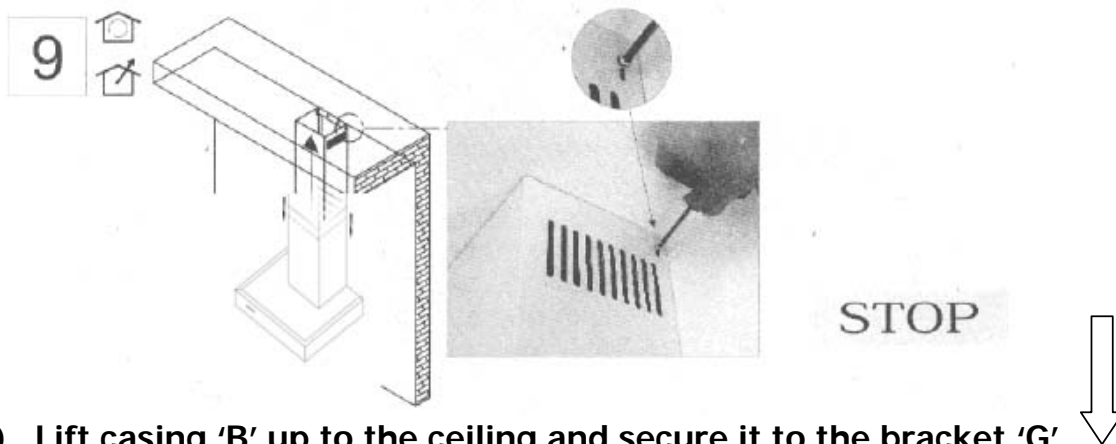


contact with the ceiling, and then mark the anchoring holes ('H').

- 7) Using a drill bit with a 6mm diameter, make two holes on the fixing marks you previously made (see below).



- 8) Insert the expansion fixings (rawlplugs) provided, put bracket 'G' (see Fig. 4 on previous page) in position and secure it with the screws provided.



- 9) Lift casing 'B' up to the ceiling and secure it to the bracket 'G', inserting the screws provided in the holes 'M' (Fig. 4 – previous page).

## Extraction / Air Purifier Modes of Operation

### EXTRACTION OPERATION – Installation Instructions



- Ensure that you have fitted the union ('N') to the upper part of the hood using the packaged two screws supplied inside the packing (Fig. 1 – on right). Using a 125 mm diameter pipe, connect the union (N) on the upper part of the hood (see Fig. 1) to the discharge outlet for cooking vapours with a cross-section of at least 150 cm<sup>2</sup>.
- **PLEASE NOTE:** If there is no discharge outlet and the hood is to be fitted to an outside wall of the building, make a hole in the wall that is large enough to fit a wind and rain-proof shutter with a cross section of at least 150 cm<sup>2</sup> and connect this to the outlet union of the unit by means of a pipe.

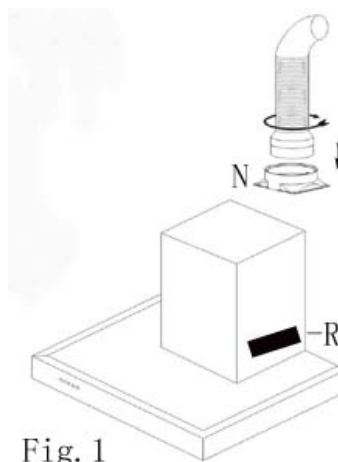


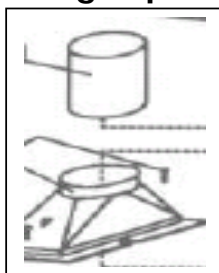
Fig. 1

AIR  
Inst

Please note: For the extraction function, you will need to connect a 125 mm diameter outlet chimney to the spigot 'N' in fig. 1 above. This pipe is not provided with your cooker hood. See figure on left.

The cooker hood can be converted to work as an air purifier in the event that there is no provision for an external air discharge duct.

In this case, air is recycled through the vent 'R' (Fig. 1 – above). When using the unit as an air purifier, you need to install two active carbon filters to absorb cooking vapours (please see page 11).



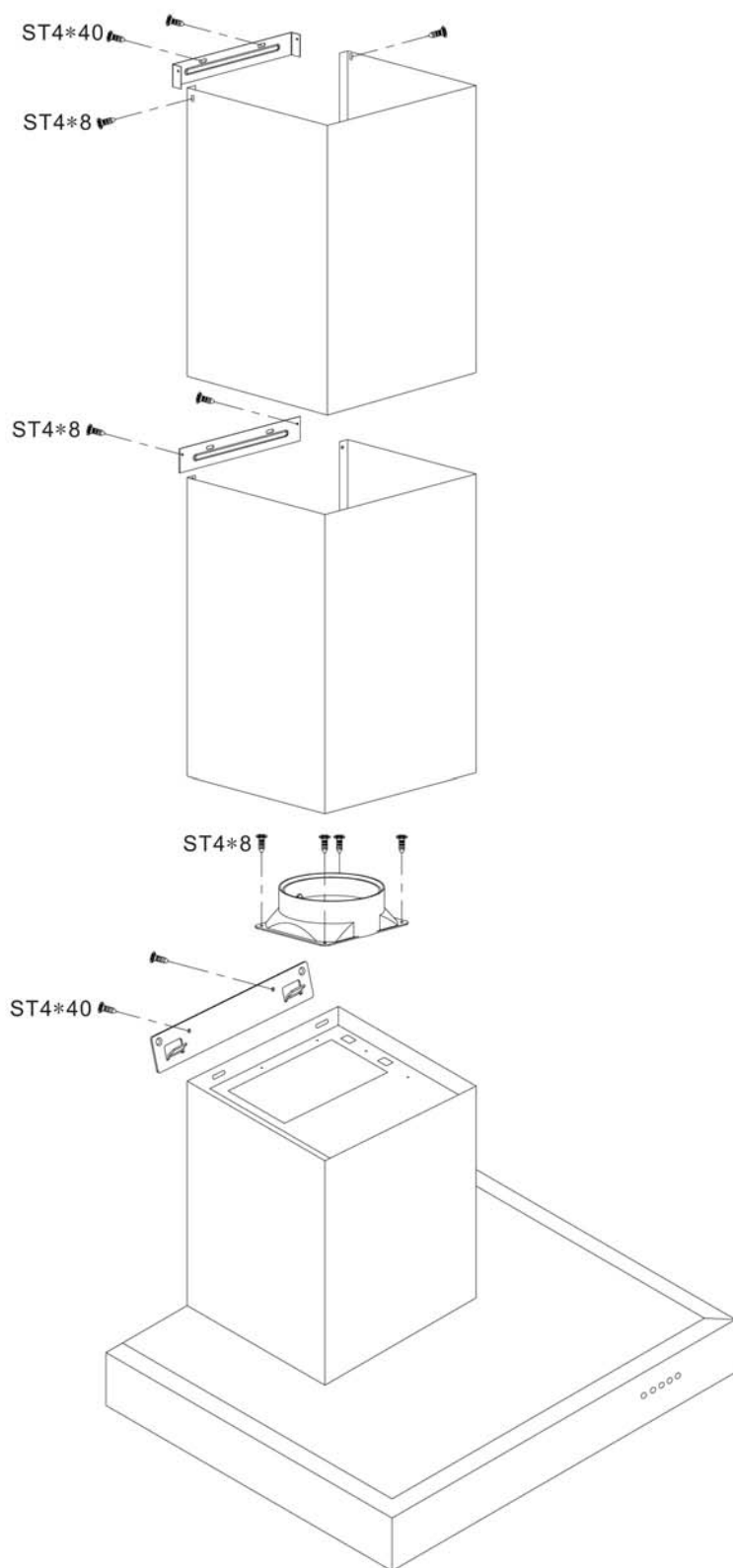
\* Note on what to do if your Cooker Hood is the version that comes with a BRACKET.

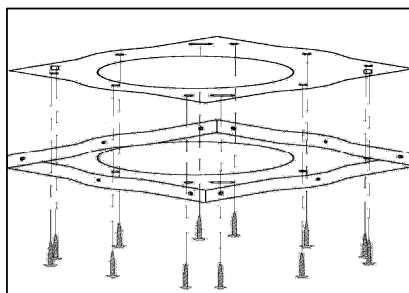
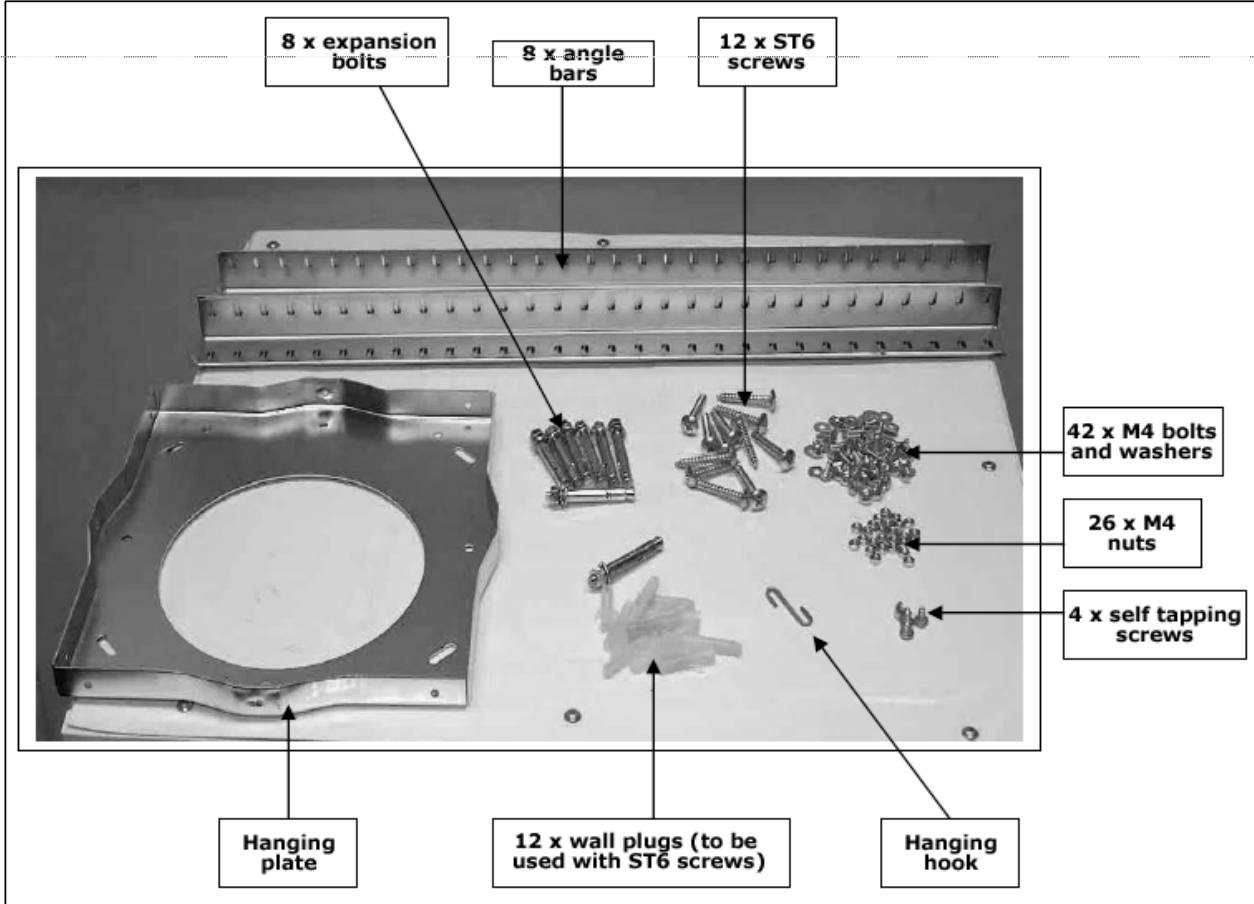
**Please note that your cooker hood may include a lower bracket. If this is the case, you will need to have it installed as such. This will mean a slight change in how the cooker hood is to be installed from the process shown on page 13.**

**In Fig. 6, below, you will see an exploded view of your cooker hood and (inset), the bracketed connecting area of the hood ('N').**

**Hook or attach the hood to the bracket using the screws supplied and carefully check that it has been done properly. A few hoods may be supplied with specific screws for vertical or horizontal adjustment.**

**Fig 6:**

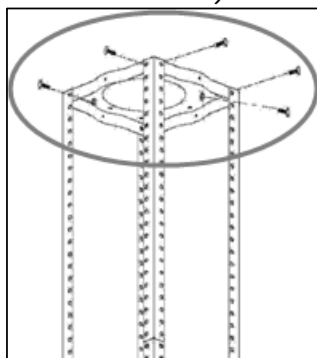




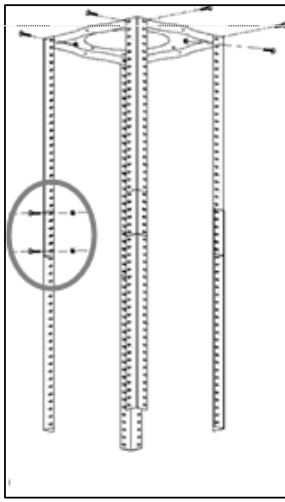
**1)** Position the hanging plate on the ceiling and then mark the position of the screw holes.

- The hanging plate should be securely fixed to the ceiling, using the 12 x ST6 (40 mm) screws.

- Depending on the surface of the ceiling that you are fixing the hanging plate to, you may need to use 8 x expansion bolts (for concrete).

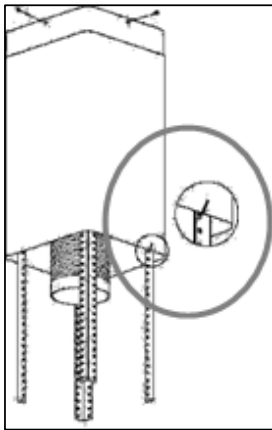


**2)** Fix the angle bars to the hanging plate, using the 8 x M4 nuts and bolts with metal washers.



**3)** Extend the angle bars to the required height and then fix them in position using the 16 x M4 nuts and bolts with metal washers.

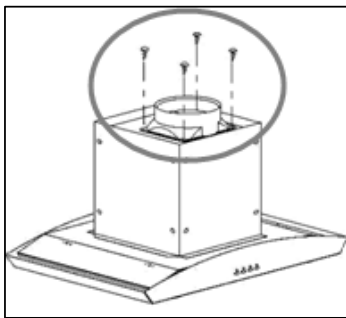
- **IMPORTANT:** The angle bars must have an overlap of **AT LEAST 100 mm**.



**4)** If your cooker hood is going to be used in extraction mode, then you should connect the ducting hose to the ceiling adaptor at this point.

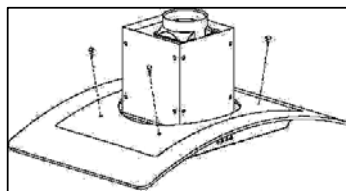
- Fix the upper chimney section to the hanging plate, using the 4 x self tapping screws.
- Slide the lower chimney section onto the angle bars and raise it until it sits just below the upper chimney section.
- Use the hanging hook to temporarily keep the

lower chimney section in this position, to make sure that it does not drop down whilst fixing the main body of the hood to the angle bars.

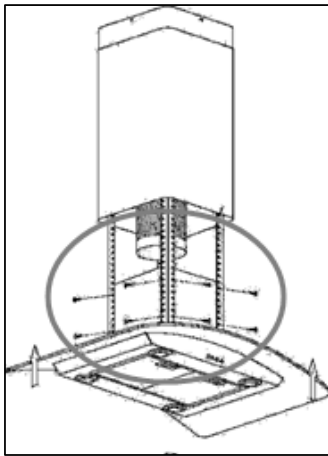


**5)** If you are going to be using the hood in extraction mode, you should fit the spigot for the duct hose onto the main body of the cooker hood, using the 4 x M4 bolts,

**6)** If the glass canopy assembled by the should be fixed to the of the cooker hood at

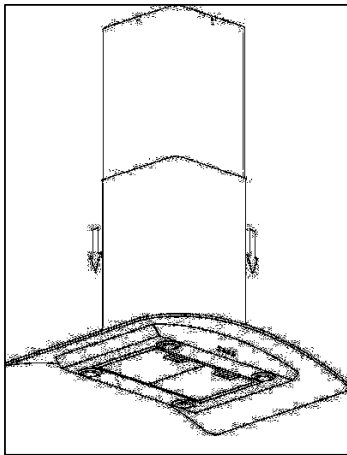


has not been pre-factory, then it top of the main body this stage.



**7)** Lift the main body of the cooker hood onto the angle bar and then fix it into position using the 16 x M4 bolts.

- **IMPORTANT:** This stage of the installation process **MUST** be completed by two people.
- **IMPORTANT:** The 16 x M4 bolts **MUST** be securely tightened.



**8)** If you are going to be using the hood in extraction mode, you should fix the ducting hose to the spigot.

- The electrical connection must correspond to the electrical requirement noted on the rating plate, which is placed inside the cooker hood. The appliance should now be connected to the electrical supply. See page 15 for detailed information on the electrical connection.
- Check that the appliance is operating correctly by selecting each speed and switching the light bulbs on and off.
- Remove the hanging hook and then slide the lower chimney section downwards, until it rests against the main body of the cooker hood.
- Use a stainless steel cleaner and polish on the stainless steel sections of the appliance.
- If you are using the appliance in recirculation mode, then you should now fit the carbon filter. See the "Fitting the carbon filter" section on pages 13 - 14.

## Troubleshooting

*If something has gone wrong with your Cooker Hood, checking against this chart might keep you from having to call for service.*

Symptom	Solution
<i>The cooker hood will not start!</i>	<ul style="list-style-type: none"><li>• Check that the hood is connected to the electricity supply.</li><li>• Check that the fan speed control is set properly.</li></ul>
<i>The cooker hood is not working effectively!</i>	<ul style="list-style-type: none"><li>• The fan speed is not set high enough.</li><li>• The grease filter is dirty.</li><li>• The kitchen is not ventilated well enough.</li><li>• If the hood is set for recirculation, check that the carbon filters have not expired.</li><li>• If the hood is set for extraction, check that the ducting and outlets are not blocked.</li></ul>
<i>The cooker hood has switched off during operation!</i>	<ul style="list-style-type: none"><li>• The safety cut-out device has been tripped.</li><li>• Turn off the hob and then wait for the device to reset.</li><li>• Note that if you have installed your cooker hood too low, this will happen. If it happens frequently, it will be damaged.</li></ul>