

Warranty and Installation Guide Full Motion TV Wall Mount

Thank you for purchasing this Crest TV Wall Mount.

Crest prides itself on supplying quality audio visual accessories to consumers and businesses throughout Australia. If you follow this guide carefully, we are confident this product will help maximise the enjoyment you obtain from your audio visual equipment for many years. Please keep this guide for future reference.

5 YEAR WARRANTY

Olbertz Holdings Pty Ltd ACN 010 003 933 trading as Crest Electronics (Crest Electronics) of 165 South Pine Road, Brendale, Queensland, 4500, Ph: 1800 812261, Email www.crest.com.au, warrants that if this Crest product purchased by you from Crest or a retail outlet is found by Crest to be defective in workmanship or materials within 5 years of the date of purchase, Crest Electronics will (at its election) either repair that product, replace the product, supply an equivalent product or pay the costs of repairing or replacing the product or acquiring an equivalent product.

This limited warranty will not extend to or cover any expenses associated with removing, demounting the original product or installing the repaired, replaced or equivalent product or all or any of its components, you must bear these expenses. It also does not cover damage or loss resulting from intentional or unintentional misuse of, tampering with, alterations to or incorrect installation of this product or use of this product for purposes other than that for which it is designed or in a manner inconsistent with the product's instructions. This limited warranty also does not apply to damage or loss resulting from fair wear and tear or events beyond Crest Electronics' control including but not limited to natural disasters.

In order to claim under this warranty, you must contact Crest Electronics and return to Crest Electronics (via our nominated reply paid address) the product and its components and proof of purchase (including the date and location of purchase) so that Crest can verify the defect and your purchase. Our goods come with guarantees that cannot be excluded under the Australian Consumer Law. You are entitled to a replacement or refund for a major failure and compensation for any other reasonably foreseeable loss or damage. You are also entitled to have the goods repaired or replaced if the goods fail to be of acceptable quality and the failure does not amount to a major failure. The benefits given by this warranty are in addition to other rights and remedies which you may have under a law in relation to the goods or services to which the warranty relates.

INSTALLATION INSTRUCTIONS

IMPORTANT

1. Installation of this TV mount will be easier if two people are involved.
2. Some images in this guide may vary slightly from the actual components supplied.
3. Ensure this Installation Guide is completely read and understood before attempting installation.
4. Mount **MUST NOT** be installed solely in plasterboard, fibre cement and similar surfaces.
5. Mount **MUST** be installed in sound supporting structures such as those made of timber, steel or masonry using appropriate fasteners.
6. The supporting structure must be capable of sustaining the combined weight of the TV mount and the display otherwise the structure must be reinforced.
7. The fasteners supplied in this hardware pack allow for fixing into timber and masonry only. If installing into a supporting structure made of steel, appropriate fasteners must be used and sourced from an appropriate supplier.
8. Use appropriate tools and safety equipment and ensure adequate ventilation during installation.
9. If uncertain about any aspect of installation, contact Crest or an installation professional.

TECHNICAL SUPPORT

If you have any questions regarding the warranty, installation or use of this product, please contact our Technical Support Centre on 1800 812 261.

CAFP7FM This model will suit most flat panel TV sizes from **15 to 47 inches (38 to 119cm)** as long as they weigh **25kg maximum** and possess mounting hole patterns of **75, 100, 200, 100 x 200, 200 x 300, 300, 300 x 400 or 400 square** (h x w)

TOOLS REQUIRED

Drywall (Timber Frame) Installation

- Stud finder
- Spirit level
- Pencil
- Drill
- Long neck phillips head screwdriver
- 6mm diameter high speed drill bit
- Adjustable spanner

In addition, for Masonry Installation

- Drill with hammer function
- 10mm masonry drill bit
- Hammer

HARDWARE KIT CONTENTS

Item	Description	Qty	Item	Description	Qty
A	Drywall Screw	3	I	M6 x 30 Screw	4
B	Concrete Anchor	3	J	M8 x 12 Screw	4
C	M6 x 16 Screw	8	K	M8 x 30 Screw	4
D	M6 Locknut	8	L	M6 x 18 Washer	4
E	M6 x 16 Washer	8	M	M8 Washer	4
F	M4 x 12 Screw	4	N	Spacer	8
G	M4 x 20 Screw	4	O	S8 Allen Key	1
H	M6 x 12 Screw	4			

STEP 1 – ATTACH WALL MOUNT COMPONENTS TO WALL

- A. Installing in Drywall (Timber frame)**
1. Locate centre of timber stud using stud finder.
 2. Mark three fixing holes over stud using wall plate as guide. Ensure plate is plumb.
 3. Predrill holes to a depth of 50mm using high speed drill bit. If installing in hardwood, larger diameter and deeper holes may need to be drilled.
 4. Attach wall plate using coach screws (A). Do not over tighten. See Figure 1.
- B. Installing in Masonry**
1. Mark three fixing holes using wall plate as guide. Ensure plate is plumb.
 2. Predrill holes to a depth of 65mm using masonry drill bit. Clean out holes.
 3. Fully insert masonry anchors (B). Tap in with hammer if required. See Figure 2.
 4. Attach wall plate by inserting coach screws (A) into each masonry anchor (B) and tighten. Do not over tighten. See Figure 2 .

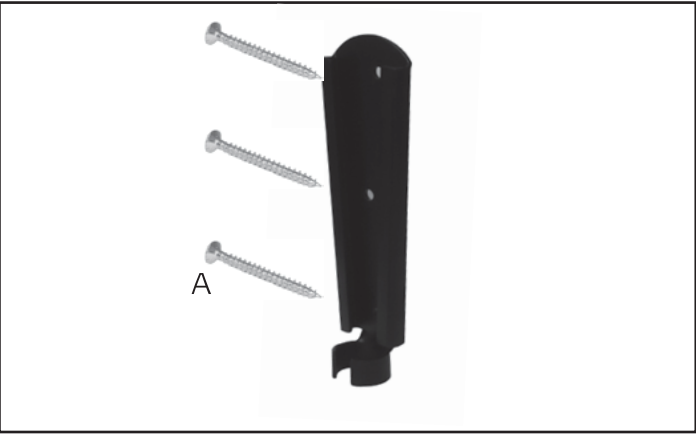


Figure 1 - Attach wall plate to wall

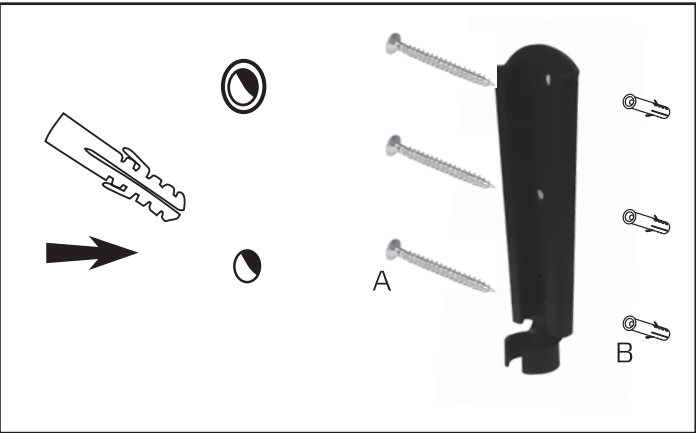


Figure 2- Insert masonry anchors and attach wall plate to wall

STEP 2 – ATTACH MOUNTING ARMS TO TV

This mount comes with a selection of different screw diameters and lengths to accommodate a wide variety of display models. Not all of the hardware in the kit will be used. If you cannot find the appropriate screw size in the kit provided, consult the manufacturer of your TV for more information.

1. Examine the mounting holes on the back of your display.
 - a) If the mounting holes are spaced 75 x 75mm, 100 x 100mm, 200 x 100mm or 200 x 200mm apart, skip this section and proceed with step 2.
 - b) If the mounting holes are spaced more than 200 x 200mm apart, check the chart and illustrations in Figure 3 to determine the correct orientation for attaching the adaptor plates to the mount.
 - c) Attach the adaptor plates as shown in the appropriate illustration to the mount using the M6 x 16 screws (C), M6 locknuts (D) and M6 x 16 washers (E) from the hardware kit. See figure 4.
2. Determine the correct length of screw to use by examining the back of your display.
 - a) If the back of your display is flat and the mounting holes are flush with the surface, you will use the shorter screws (F, H or J) from the hardware kit.
 - b) If the back of your display is curved, has a protrusion, or if the mounting holes are recessed, you will need to use the longer screws (G, I or K) and may also need to use the spacers (N).
3. Determine the correct diameter of screw to use by carefully trying one of each size (M4, M6 and M8) from the hardware kit. **Do not force any of the screws- if you feel resistance stop immediately and try a smaller diameter screw.**
4. Attach the mount arms to the back of your display using the screws identified in steps 2 and 3. See Figure 5.
 - a) If you are using the M4 or M6 screws, you may need to use the M6 x 18 washers (L). If you are using the M8 screws you may need to use the M8 washers (M). **Only use the washers if necessary.**
 - b) If the back of your display is curved, has a protrusion or if the mounting holes are recessed, you will need to use the longer screws (G, I or K) and may also need to use the spacers (N).

Note: If the holes of the mount do not line up with the holes on your display, check to make sure that your display is VESA compatible. This mount can only be used with displays that are VESA compatible between 75 x 75mm and 400 x 400mm. Consult the manufacturer of your display for more information.

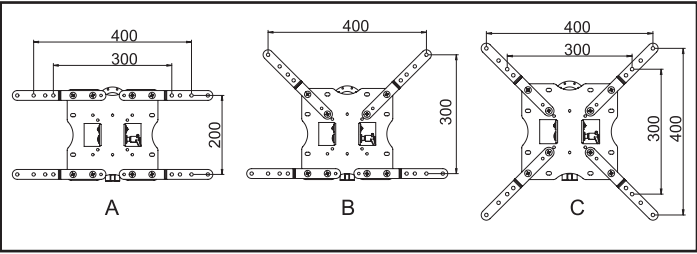


Figure 3

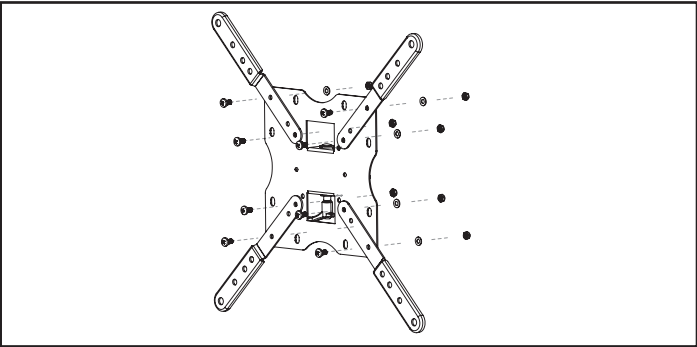


Figure 4

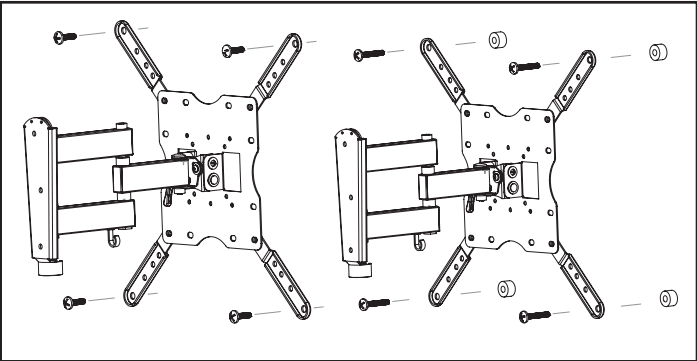


Figure 5

STEP 3 – FINAL ASSEMBLY

See Figure 6.

1. To complete the installation, carefully slide the mount with your display attached into the wall plate. See Figure 6. Do not release the display until the display plate is securely placed in the wall plate.
2. If you need to remove the display from the wall, carefully slide the mount upwards and out of the wall plate.
3. Cables can be routed through the hooks located on the mount and at the bottom of the wall plate to keep them organised and out of the way.

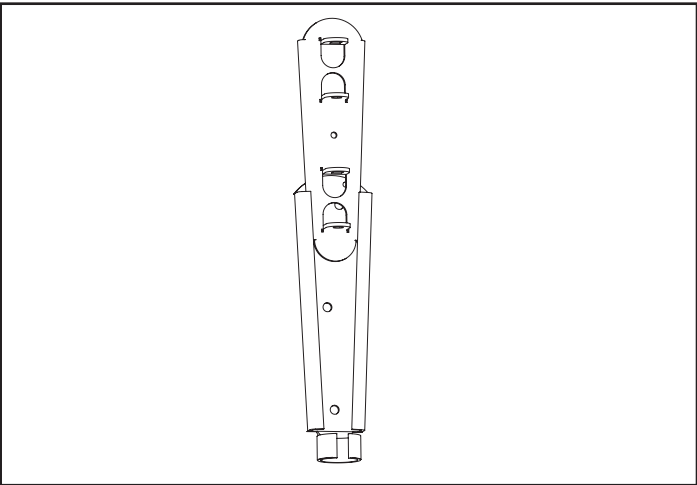
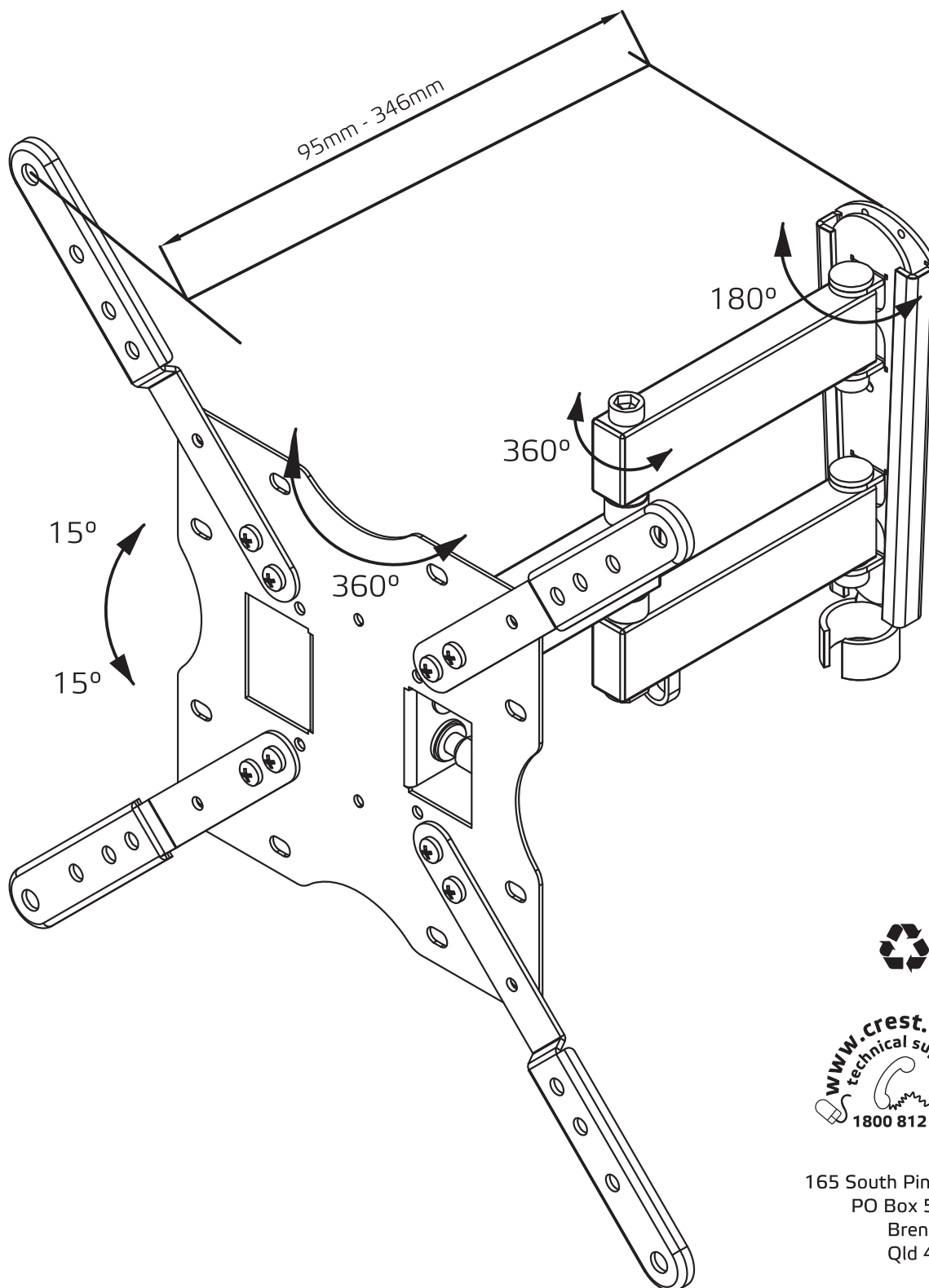


Figure 6



OPERATION AND ADJUSTMENT

1. To adjust the tilt angle, hold your display firmly with one hand and loosen the tilt adjustment knob. Move the display to the desired position and re-tighten the knob. **Do not release the display until the knob is fully tightened.**
2. Swive adjustments can be made by simply moving your display to the desired position. If the main swivel joint is too tight or too loose, it can be adjusted using the S8 Allen key (O) from the hardware kit.
3. Periodically clean your mount with a dry cloth. Inspect all screws and hardware at regular intervals to ensure that no connections have become loose over time. Re-tighten as needed.



165 South Pine Rd
PO Box 5658
Brendale
Qld 4500