

parkmate HD

5.0" MONITOR & CAMERA KIT



INSTALLATION / USER MANUAL



MODEL: RVK-50

www.parkmate.com.au

Thank you for purchasing Parkmate's RVK-50 Reversing System. We are certain that our product will give you trouble-free operation while providing you with a safety feature that enhances your driving experience. Our products, like most after-market safety enhanced devices, are designed to assist and aid the driver, not to replace the manual function of the person operating the vehicle.

Disclaimer: Parkmate's RVK-50 rear-view system is designed as a driver assistance device. Although this is a visual aid and will allow you to view what is behind the vehicle, it does not remove the responsibility of driving the vehicle from the driver. The legal responsibility and safe driving practise remains with the driver at all times. You have purchased this product with the understanding that its use is as an aid only. We highly recommend that you have this product professionally installed to ensure that it will provide the functions it is set out to perform.

RVK-50 Component List:

- 1 x Camera
- 1 x Monitor
- 1 x 6M Extension Cable
- 2 x Power Cable
- 1 x Window Mount
- 1 x Dash Mount



Important Notice:

1. Please read this manual carefully before using the product.
2. This unit is for vehicles with 12V DC only.
3. Route wiring harness away from heat sources and electrical components.
4. Wire connection points should be insulated
5. Please install this unit in a professional manner
6. Please perform tests after finishing the installation.
7. Specifications subject to change without prior notice.

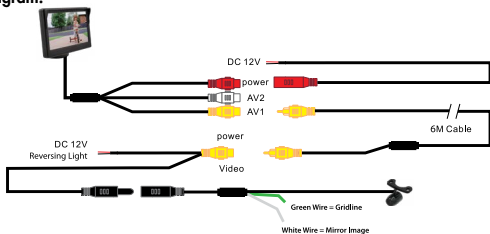
Specifications (Monitor):

- Display:** 5.0" (16:9 ratio diagonal length)
- Power:** ≤3W
- Power supply:** 9 – 16V DC
- Resolution:** 480(W)*R.G.B. *272(H)
- PAL/NTSC compatible
- 2 AV inputs (allows up to two cameras)
- 180° degree rotational swivel stand
- Auto activation upon reverse gear engagement
- Adjustable brightness

Specifications (Camera):

- Resolution:** 420 TV Lines
- Effective pixels:** PAL = 648 x 520
NTSC = 648 x 488
- Power supply:** 9 – 16V DC
- Operating Temperature:** -20°C – +70°C
- Horizontal Angle:** 170° degrees
- Water-proof rating:** IP67
- Minimum Illumination:** 0.5 Lux
- Normal to Mirror image switching
- Grid-line switching

Wiring Diagram:

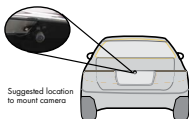


Front view option: RVK-50 functions as a rear view camera standard and also supports front view application. For front view application, you can cut the thin WHITE wire near the camera lead and restart power to see the image reversed.

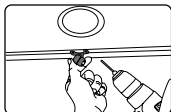
Grid-line option: RVK-50 comes with parking grid-lines. To remove the grid-line application, you can cut the thin GREEN wire near the camera lead and restart power to show the removal of grid-lines on your screen.

Installation - Butterfly Mount

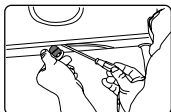
1. Select a flat and centred location near the number plate lamp at the rear of the vehicle to mount camera.



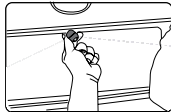
IMPORTANT: When selecting this location it is highly recommended that the image transmitted by the camera show the rear bumper and area behind the vehicle.



2. Attach tape to the bracket of the camera, and drill a small hole for the first screw.



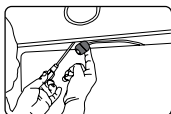
3. Use a screw driver to fix the first screw, but don't tighten it yet.



4. Insert camera wire through newly drilled hole and mount securely in place.

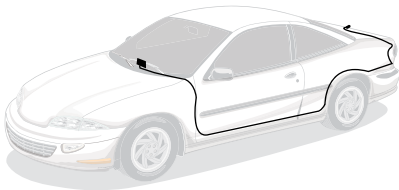


5. Mark the position suitable for the second screw and drill a small hole for it.



6. Fix the second screw and tighten both screws.

Installation Diagram:



Testing

How to test:

1. Apply the parking brakes.
2. Turn Ignition on. (DO NOT TURN ON VEHICLE)
3. Shift into reverse gear.
4. Image should appear on the monitor.

Trouble Shooting:

| Problem | Solution |
|-------------------------------------|---|
| "No Signal" appears while reversing | 1. Check video input connections 2. Check camera power connections |
| Video image is not sharp | Check camera lens for debris |

Maintenance:

Always keep camera clear from dirt and mud. Clean camera with a soft moist cloth.

To view the complete Parkmate range or for details on how to contact us, please visit our website at www.parkmate.com.au