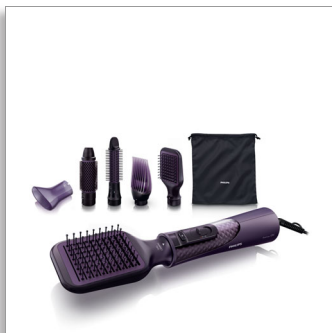




Philips ProCare
Airstyler

5 styling attachments

Even heat distribution
Ionic care
Travel pouch



HP8656/00

Dry & style natural looks with care

Hair dryer for maximum care

Dry & style at once - the new Philips ProCare airstyler allows you to create beautiful natural styles, whilst providing maximum care for your hair. The innovative Paddlebrush helps you create a naturally straight hair style without damage.

Beautifully styled hair

- 1000W for beautiful results
- 38mm thermo brush to smoothen your hair
- Retractable bristle brush for easy curling
- Narrow concentrator for focused airflow
- Volumizer for more volume at the roots
- Paddle straightening brush for naturally straight looks
- Three flexible heat and speed settings for more control

Less Hair Damage

- More Care with ion conditioning for shiny, frizz-free hair
- Ceramic coated brushes for more care
- Less overheating with Even Heat Distribution technology
- Best drying temperature with ThermoProtect temperature
- Cool air setting for gentle drying



asimpleswitch.com

PHILIPS

Highlights

Advanced EHD technology

Advanced Philips EHD technology means that the attachments are designed to distribute the heat evenly. This ensures heat is always distributed very evenly - even at high temperatures - and prevents damaging hot spots. This provides maximum protection to the hair from overheating and thus helps to keep your hair healthy and shiny.

Ionic Care

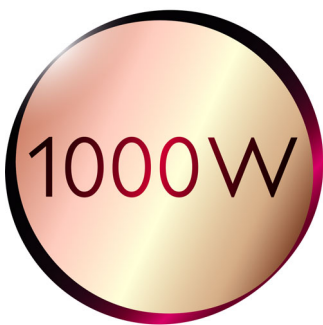


Ionic conditioning enables anti-static drying. Charged negative ions eliminate static hair, condition the hair and smooth down the hair cuticles to intensify the hair's shine and glossiness. The result is smooth and frizz-free hair that shines beautifully.

ThermoProtect temperature

The ThermoProtect temperature provides the optimal drying temperature and gives additional protection from overheating the hair. With the same powerful airflow, you will get the best results in a caring way.

1000W



This 1000W hairdryer creates the optimum level of airflow and gentle drying power, for beautiful results every day.

38mm thermo brush



The thermo brush has an extra wide diameter of 38mm. The width of the barrel makes it the perfect styling tool for creating smooth styles and waves.

Retractable bristle brush



This easy to use airstyler is both a styling brush and curler in one. The bristles retract into the brush at the touch of a button, so you can easily slide the styler out of your hair. What's left is a beautiful bouncy curl.

Narrow concentrator



The concentrator works by focusing the flow of air through the opening onto specific areas. This results in precise styling and is great for touch ups or to finish a style.

Volumizer



The unique and innovative volumizer let's you create volume just where you want it - at the roots.

Paddle straightening brush

With the innovative paddle straightening brush you can create beautiful naturally straight looking hair, without causing any damage to the hair.

Three flexible settings

The speed and heat required can be easily adjusted to create the perfect end result. Three flexible settings ensure precise and tailored styling.

Ceramic coated brushes

The brushes have a ceramic coating, to prevent overdrying. It helps spread the heat more evenly and avoids hot spots on the hair, which lead to overheating and overdrying of the hair.



asimpleswitch.com

Philips Green Logo

Philips Green Products can reduce costs, energy consumption and CO2 emissions. How? They offer a significant environmental improvement in one or more of the Philips Green Focal Areas – Energy efficiency, Packaging, Hazardous substances, Weight, Recycling and disposal and Lifetime reliability.

Specifications

Technical specifications

- Voltage: 220-240~ V
- Wattage: 1000 W

Attachments

- Nozzle: For a focused airflow
- Retractable bristle brush: For tangle free waves & curls
- Paddle straightening brush: For naturally straight looks
- Thermobrush: For smoothing and for waves
- Volumizer: For volume at the roots

Caring technologies

- Ceramic coating of brushes
- Ion technology
- Thermoprotect
- EHD technology

Ease of use

- Cable length: 2m
- Storage hook



Issue date 2014-12-05

Version: 6.0.1

EAN: 08 71010 36424 04

© 2014 Koninklijke Philips N.V.
All Rights reserved.

Specifications are subject to change without notice.
Trademarks are the property of Koninklijke Philips N.V.
or their respective owners.

www.philips.com