

HOMEDICS®

Radiance
Microdermabrasion
with Cooling



Instruction Manual and
Warranty Information

1 year limited warranty

MD-1000-AU

IMPORTANT SAFEGUARDS:

WHEN USING ELECTRICAL PRODUCTS, ESPECIALLY WHEN CHILDREN ARE PRESENT, BASIC SAFETY PRECAUTIONS SHOULD ALWAYS BE FOLLOWED, INCLUDING THE FOLLOWING:

- **ALWAYS** unplug the appliance from the electrical outlet immediately after using and before cleaning. To disconnect, turn all controls to the 'OFF' position, then remove plug from outlet.
- Unplug from the mains outlet when not in use and before putting on or taking off parts or attachments.
- This appliance is not intended for use by persons (including children) with reduced physical, sensory or mental capabilities, or lack of experience and knowledge, unless they have been given supervision or instruction concerning use of the appliance by a person responsible for their safety. Children shall not play with the appliance. Cleaning and user maintenance shall not be made by children.
- Children should be supervised to ensure that they do not play with the appliance.
- **DO NOT** reach for an appliance that has fallen in water or other liquids. Switch off at the mains and unplug it immediately. Keep dry – NEVER operate the appliance if it has been dropped into water or other liquids. Return it to the HoMedics Service Centre or similarly qualified person for examination and repair.
- **NEVER** insert pins or other metallic fasteners into the appliance.
- Use this appliance for the intended use as described in this booklet. DO NOT use attachments not recommended by HoMedics.
- **NEVER** operate the appliance if it has a damaged cord or plug, if it is not working properly, if it has been dropped or damaged, or dropped into water. Return it to the HoMedics Service Centre or similarly qualified person for examination and repair.
- Keep cord away from heated surfaces.
- Excessive use could lead to the product's excessive heating and shorter life. Should this occur, discontinue use and allow the unit to cool before operating.
- **NEVER** drop or insert any object into any opening.
- **DO NOT** operate where aerosol (spray) products are being used or where oxygen is being administered.
- **DO NOT** operate under a blanket or pillow. Excessive heating can occur and cause fire, electrocution or injury to persons.
- **DO NOT** carry this appliance by the cord or use cord as a handle.
- This appliance is for household and indoor use only.
- **DO NOT** attempt to repair the appliance. There are no user serviceable parts. For service, send to a HoMedics Service Centre. All servicing of this appliance must be performed by authorised HoMedics service personnel or similarly qualified person only.
- **NEVER** block the air openings of the appliance or place it on a soft surface, such as a bed or couch. Keep air openings free of lint, hair etc.
- **Do not** place or store appliance where it can fall or be pulled into a bath or sink. Do not place in or drop into water or other liquid.
- The battery must be removed from the appliance before it is scrapped. The appliance must be disconnected from the mains supply when removing the battery. The battery is to be disposed of safely. The consumer must use the appropriate tools to remove the screws from the product, then disengage the clip fittings on the outer casing to access the battery for removal, prior to the product being scrapped.
- This appliance must only be supplied at safety extra low voltage corresponding to the marking on the appliance.
- This appliance contains batteries that are non-replaceable.
- **WARNING:** For the purposes of recharging the battery, only use the detachable supply unit model SAW06C-050-1000AB provided with this appliance.

SAFETY CAUTIONS:

PLEASE READ THIS SECTION CAREFULLY BEFORE USING THE APPLIANCE.

- If you have any concerns regarding your health, consult a doctor before using this appliance.
- If you are susceptible to allergic reactions or if you have circulatory problems, consult a physician before using this product.
- Do not use on irritated, sunburned or chapped skin, or on any area with dermatological problems.
- Do not apply over skin eruptions, warts, moles or varicose veins.
- Use should be easy and painless. If you experience skin irritation, or hand discomfort when using this product, discontinue use. If a more extreme reaction occurs, consult your doctor
- Individuals with pacemakers and pregnant women should consult a doctor before using this appliance. Not recommended for use by Diabetics
- DO NOT use on an infant, invalid or on a sleeping or unconscious person. DO NOT use on sensitive skin or on a person with poor blood circulation.
- If you feel any discomfort whilst using this appliance, discontinue use and consult your doctor.
- If the product feels excessively hot, switch off and contact the HoMedics Service Centre.
- Use of this product should be pleasant and comfortable. Should pain or discomfort result, discontinue use and consult your GP.
- Ensure that your hands are dry when operating the controls or removing the plug.
- This is a non professional appliance and is not intended to treat any medical conditions of the skin. Do not use as a substitute for medical attention.
- This product should NEVER be used by any individual suffering from any ailments that would limit the user's capacity to operate the controls.

WARNING:

For the purposes of recharging the battery, only use the detachable supply unit model SAW06C-050-1000AB provided with this appliance.

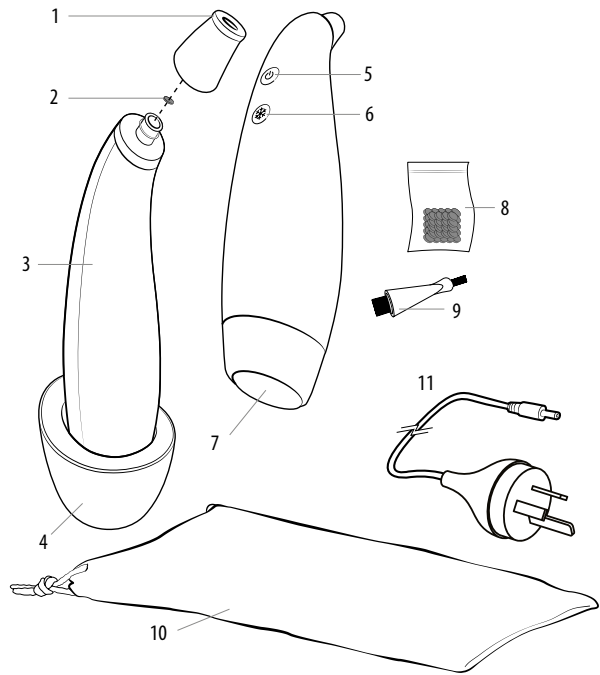
MICRODERMABRASION IS NOT RECOMMENDED IF YOU HAVE ANY OF THE FOLLOWING CONDITIONS:

- Lesions, warts, or recent herpes outbreak
- Sunburn or sun sores
- Active rosacea
- Auto-immune disorders
- Skin cancer
- Vascular lesions
- Any open wounds, sores, or cuts
- Taking oral blood thinners (anti-coagulants)

PRODUCT FEATURES:

HoMedics Microdermabrasion brings professional salon skincare into your own home. The diamond tip works with a gentle but powerful suction action to remove dead cells from the skin's surface, revealing and stimulating the fresh skin layer beneath. Perfect for restoring youthful radiance to the skin; improving skin tone and texture, smoothing the appearance of fine lines and wrinkles and reducing the appearance of age spots and sun damage. Use regularly to maintain young and fresh looking skin.

- 1. Diamond tip
- 2. Black wool filter
- 3. Handle
- 4. Charging base
- 5. Power button & level selector
- 6. Cooling button
- 7. Cooling surface
- 8. Replacement black wool filters
- 9. Cleaning Brush
- 10. Cloth travel bag
- 11. Power Adapter



UNIQUE FEATURES & SPECIFICATIONS:

HoMedics Microdermabrasion + Cooling Surface brings professional spa skincare into your own home. The diamond tip works with a gentle but powerful suction action to remove dead cells from the skin's surface, revealing and stimulating the fresh skin beneath. Perfect for restoring youthful radiance to the skin, improving skin tone and texture, smoothing the appearance of fine lines and wrinkles, and reducing the appearance of age spots and sun damage. Use regularly to maintain youthful-looking skin.

CLINICALLY TESTED FOR ALL SKIN TYPES

Spa-quality Microdermabrasion device

4 INTENSITY LEVELS

Adjust for maximum comfort and effectiveness

2 DIAMOND TIPS

Normal and sensitive tips

COOLING SURFACE

Soothes skin post-treatment

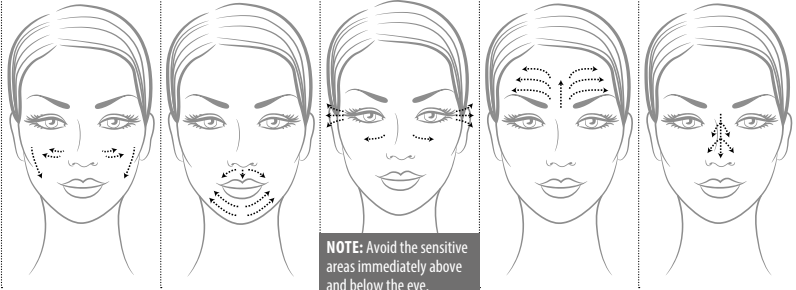
BLACK WOOL FILTERS

100 black wool filters

RECHARGEABLE

Charging base and charging cord

INSTRUCTIONS FOR USE:

AREA	Cheeks	Around Lips & Chin	Around Eyes	Forehead	Nose
MAX LEVEL	3	2	1	4	4
ROUTINE					

NOTE: Avoid the sensitive areas immediately above and below the eye.

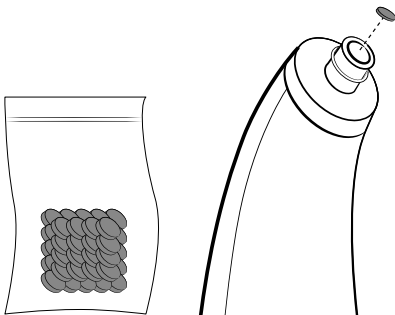
CHARGING THE BATTERY

When the level indicator LED flashes red, the product needs charging. Connect the charging base to the detachable supply unit model SAW06C-050-1000AB provided with this appliance using the USB charging cable. Place the handle in the charging base and press down firmly. The LED lights will flash to indicate that charging is taking place. When charging is complete all the lights will stay on.

It takes 4 hours for a full charge, which will provide 90-120 minutes use, dependent on power levels used.

FILTER FITTING AND REPLACEMENT

For correct operation it is very important that a new black wool filter is fitted before each use of the device. The filter collects dead skin cells and should be disposed of after use and then replaced. Using the device without a filter will allow debris and dead skin cells to enter the motor, shortening the life of the product and invalidating the warranty. (See below)



WHAT TO EXPECT

Regular microdermabrasion treatments can both restore and maintain a youthful appearance to the skin. We advise starting slowly with just one or two treatments a week, then building up to treatments every other day if desired.

During use you should feel a gentle suction effect as the tip moves across the skin and some people may also notice the slight coarseness of the diamond tip. Depending on your skin type, you may experience some reddening or increased sensitivity after treatment. This is perfectly normal and usually subsides within a few hours. You may wish to consider this and make your first treatment at the end of the day rather than just before going out. Adverse reactions are rare, but if skin becomes unduly inflamed or irritated, stop using the device immediately.

FACIAL TREATMENT ROUTINE

- Wash and dry your face
- Remove handle from the charging base and fit your choice of diamond tip with a new black wool filter.
- Press and hold the power button for 2 seconds to turn the unit on. Press again as required to increase the power level, as indicated by the LEDs. It is recommended to start on level 1 for the first treatment and to progress to a higher level if comfortable. See also MAX recommended levels in the above diagrams.
- Place the diamond tip flat against the skin until you feel suction then smooth motion, covering the same area no more than 2-3 times in one treatment. Do not press hard. In some areas it can help to hold the skin taut with the other hand (eg. around the eyes).
- The diagram above will help you establish an effective facial routine.

AFTER TREATMENT COOLING SURFACE

- Press and hold the cooling ❄️ button for 1 second. A blue LED will glow indicating the cooling surface is activated.
- Apply cooling surface to the treated area to soothe the skin post-treatment.
- DO NOT hold the cooling surface on the same area of skin for more than 10 seconds. The product is designed to be moved continuously across the surface of the skin.
- Press and hold the cooling ❄️ button for 1 second to turn the cooling surface off.

NOTE: the cooling surface is equipped with a 2.5 min auto-off feature.

NOTE: the cooling surface operates independently. It is normal for the unit to feel warm when using the cooling surface.

AFTER TREATMENT

- Press and hold the power button for 2-3 seconds to turn off device.
- Wash your face with cold water to remove any remaining dead skin cells and then apply your preferred moisturiser. **NOTE:** Avoid using AHA (acid based) moisturisers on the day of treatment.
- Depending on your skin type, you may experience some reddening or increased sensitivity after treatment. This is perfectly normal and usually subsides within a few hours.
- Avoid direct sun exposure after treatment, consider applying a stronger sunscreen as required.
- Always, dispose of the used black wool filter and replace with a new filter ready for next use.
- Remove dead skin cells and debris from the diamond tip using the brush provided. We also recommend the periodic use of an ultrasonic cleaner for deep cleaning the diamond tip, especially if it starts to feel smooth or less effective.

OTHER TREATMENTS

Other areas of the body can also be treated 2-3 times a week. For example, neck, chest, hands etc. When treating larger areas, replace the black wool filter part way through the treatment in order to maintain the level of suction. Aim to cover the same area no more than 2-3 times in one treatment.

FAQ:

HOW OFTEN SHOULD I USE THE PRODUCT?

It's best to start slowly – usually just once a week, then build up to 2 or 3 times a week if this is comfortable for your skin.

WILL IT HURT?

No. Treatment should not be painful. Depending on the sensitivity of your skin, you may feel slight discomfort from the diamond tip as it moves across the skin and there could be some short term redness or sensitivity after treatment, but this will soon subside. If treatment is uncomfortable, then you may need to use a lower power setting or switch to the sensitive diamond tip.

CAN I USE THE PRODUCT IN COMBINATION WITH ANTI-AGING CREAMS/SERUMS?

If your anti-aging cream or serum contains AHA (or acid) then it should not be used on the same day as the microdermabrasion treatment, but can be used on non-treatment days. Non-AHA (acid free) anti-aging products can be used at any time.

THE PRODUCT DOES NOT SWITCH ON

The power button has to be pressed continuously for 2-3 seconds to turn the product on. If you try this and it still doesn't work, then it may need recharging. See 'CHARGING THE BATTERY'

THE PRODUCT SEEMS TO BE LOSING POWER

This can happen if the black wool filter is not replaced after each treatment. Try fitting a new filter. Also check the tip to ensure that the plastic part of the tip has no cracks or damage. Check that the two rubber o-rings are in place on the nozzle end of the unit (where the tip fits over).

THE DIAMOND TIP NO LONGER SEEMS ROUGH

The diamond tip can accumulate skin cells over time which may start to make it feel smooth and reduce its effectiveness. If this happens we recommend cleaning the diamond tip in an Ultrasonic Cleaner. These are either available to purchase, or jewellery stores offer a cleaning service. If using the product regularly you may need to do this several times a year to maintain optimum effectiveness.

MAINTENANCE & STORAGE:

TO STORE

Place attachments into their proper compartments inside the storage case. Store case in a safe, dry place, out of childrens reach.

TO CLEAN

Always unplug before cleaning the unit. Never use liquids or abrasive cleaners to clean the housing of the unit or case. Wipe off case with damp cloth. Clean attachments periodically using detergent. Allow attachments to dry before inserting them into the hand unit.

[illegible]

1-YEAR LIMITED WARRANTY

HoMedics®

We or us means HoMedics Australia Pty Ltd ACN 31103 985 717 and our contact details are set out at the end of this warranty;

You means the purchaser or the original end-user of the Goods. You may be a domestic user or a professional user;

Supplier means the authorised distributor or retailer of the Goods that sold you the Goods in Australia and New Zealand; and

Goods means the product or equipment which was accompanied by this warranty and purchased in Australia and New Zealand.

For Australia:

Our Goods come with guarantees that cannot be excluded under the Australian Consumer Law. You are entitled, subject to the provisions of the Australian Consumer Law, to a replacement or refund for a major failure and for compensation for any other reasonably foreseeable loss or damage. You are also entitled, subject to the provisions of the Australian Consumer Law, to have the Goods repaired or replaced if the goods fail to be of acceptable quality and the failure does not amount to a major failure. This is not a complete statement of your legal rights as a consumer.

For New Zealand:

Our Goods come with guarantees that cannot be excluded under the Consumer Guarantees Act 1993. This guarantee applies in addition to the conditions and guarantees implied by that legislation.

The Warranty

HoMedics sells its products with the intent that they are free of defects in manufacture and workmanship under normal use and service. In the unlikely event that your HoMedics product proves to be faulty within 1 year from the date of purchase due to workmanship or materials only, we will replace it at our own expense, subject to the terms and conditions of this guarantee. The warranty period is limited to 3 months from the date of purchase for products used commercially/professionally.

Terms and Conditions:

In addition to the rights and remedies that you have under the Australian Consumer Law, Consumer Guarantees Act of New Zealand or any other applicable law and without excluding such rights and remedies warranty against defects:

1. The Goods are designed to withstand the rigours of normal household use and are manufactured to the highest standards using the highest quality components. Whilst unlikely, if, during the first 12 months (3 months commercial use) from their date of purchase from the Supplier (Warranty Period), the Goods prove defective by reason of improper workmanship or materials and none of your statutory rights or remedies apply, we will replace the Goods, subject to the terms and conditions of this warranty.
2. We do not have to replace the Goods under this Additional Warranty if the Goods have been damaged due to misuse or abuse, accident, the attachment

of any unauthorised accessory, alteration to the product, improper installation, unauthorised repairs or modifications, improper use of electrical/power supply, loss of power, malfunction or damage of an operating part from failure to provide manufacturer's recommended maintenance, transportation damage, theft, neglect, vandalism, environmental conditions or any other conditions whatsoever that are beyond the control of HoMedics.

3. This Warranty does not extend to the purchase of used, repaired or second-hand products or to products not imported or supplied by HoMedics Australia Pty Ltd, including but not limited to those sold on offshore internet auction sites.
4. This Warranty extends only to consumers and does not extend to Suppliers.
5. Even when we do not have to replace the Goods, we may decide to do so anyway. In some cases, we may decide to substitute the Goods with a similar alternative product of our choosing. All such decisions are at our absolute discretion.
6. All such replaced or substituted Goods continue to receive the benefit of this Additional Warranty for the time remaining on the original Warranty Period (or three months, whichever is the longest).
7. This Additional Warranty does not cover items damaged by normal wear and tear including but not limited to chips, scratches, abrasions, discolouration and other minor defects, where the damage has negligible effect on the operation or performance of the Goods.
8. This Additional Warranty is limited to replacement or substitution only. As far as the law permits, we will not be liable for any loss or damage caused to property or persons arising from any cause whatsoever and shall have no liability for any incidental, consequential, or special damages.
9. This warranty is only valid and enforceable in Australia and New Zealand.

Making a Claim:

In order to claim under this Warranty, you must return the Goods to the Supplier (place of purchase) for replacement. If this is not possible, please contact our Customer Service department by email: cservice@homedics.com.au or at the address below.

- All returned Goods must be accompanied by satisfactory proof of purchase which clearly indicates the name and address of the Supplier, the date and place of purchase and identifies product. It is best to provide an original, legible, and unmodified receipt or sales invoice.
- You must bear any expense for return of the Goods or otherwise associated with making your claim under this Additional Warranty.

DISTRIBUTED BY

AUSTRALIA: HoMedics Australia Pty Ltd, 14 Kingsley Close, Rowville, VIC 3178 | Phone: (03) 8756 6500

NEW ZEALAND: CDB Media Ltd, 4 Lovell Court, Albany, Auckland, New Zealand 0800 232 633