

Additional Information to User Manual

1. Temperature Range

Fridge Compartment	$0 < T \leq 9^{\circ}\text{C}$
Freezer Compartment	$-20 < T \leq -15^{\circ}\text{C}$

(Note: Above temperature range is average temperature for reference only.)

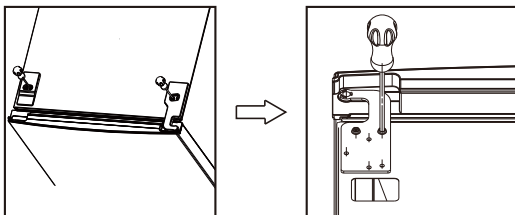
2. Changing the Reversible Door

Before reversing the door, please be prepared below tools and material: straight screwdriver, cross screwdriver, spanner and the components included in the poly bag:

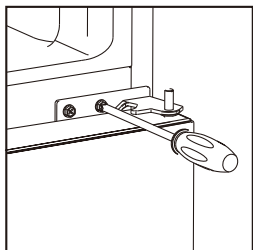
Left hinger x1 Left hinger cover x1 Left middle stopper x1 Left middle stopper metal block x1



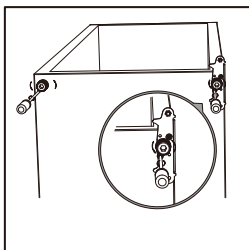
1. Close upper door, take out the screw from the top hinge covers by cross screwdriver.
Take off hinge cover, then unscrew top hinge and take off upper door.



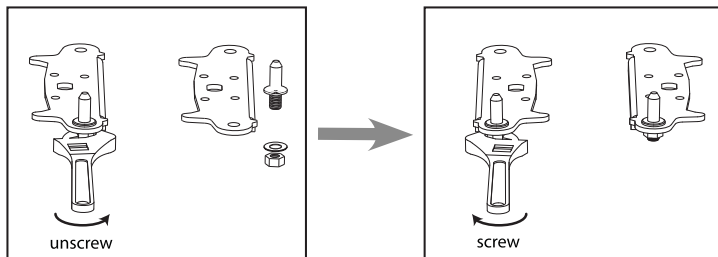
2. Unscrew from the middle hinge by cross screwdriver, then take off the lower door.



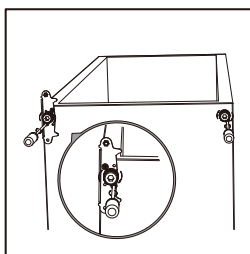
3. Laying down the refrigerator, take out the adjusting feet as below, then unscrew the lower hinge by cross screwdriver.



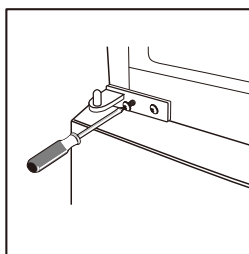
- 4 . Unscrew and remove the bottom hinge pin, turn the bracket over and replace it.



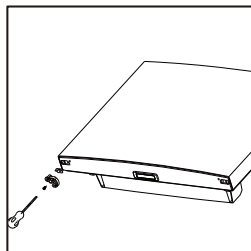
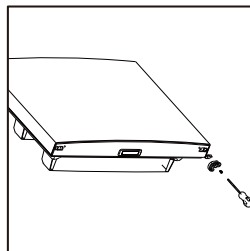
5. Refit the bracket fitting the bottom hinge pin. Replace both adjustable feet. Transfer the lower door to the property position.



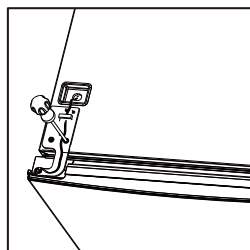
6. Make the middle hinge reverse the direction 180°C, then transfer it to the left property position. Make the middle hinge pin in the upper hole of the lower door, then tight the screws.



7. Unscrew right middle stopper with metal block from bottom of upper door. And then install left middle stopper and metal block in left side of bottom of upper door.



- 8 Install the upper door, fix the upper door hinge onto the cabinet .



9. Take left hinge cover from accessory bag and install it with top hinge. Then install hole cover at right side.

