

USER MANUAL

INALTO?

INALTO.HOUSE

341L Integrated Fridge/Freezer

MODEL CODE/S

IIF341



FOR ALL AUSTRALIAN HOMES

V2.0 | 0325

Welcome

Congratulations on purchasing your new Integrated Fridge!

The InAlto brand is proudly distributed within Australia by Residentia Group Pty Ltd and within New Zealand by Applico Ltd.

Residentia Group Pty Ltd
ACN. 600 546 656
165 Barkly Avenue
Burnley, Victoria 3121
Australia

—
Applico Ltd
635 Great South Road
Penrose, Auckland 1061
New Zealand

—
InAlto
www.inalto.house
f /inalto.house
@ /inalto.house

Please refer to the warranty card at the rear of this manual for information regarding your product's parts and labour warranty, or visit online at:

→ www.residentia.group
→ www.applico.co.nz
→ www.inalto.house

Both Residentia Group & Applico are customer obsessed and our Support Teams are there to ensure you get the most out of your appliance. Should you want to learn more about recommended usage, the various features of your appliance, and importantly taking care of the unit when cleaning, our Support Teams are here to help.

Telephone Contacts:

→ AU: 1300 11 4357
→ NZ: 0800 763 448

It is important that you read through the following use and care manual thoroughly to familiarise yourself with the installation and operation requirements of your appliance to ensure optimum performance.

Again, thank you for choosing an InAlto appliance and we look forward to being of service to you.

SCAN ME



Scan to Register your InAlto Appliance or go to:

→ AU: www.inalto.house/registration
→ NZ: www.inalto.house/nz/registration

By registering your product, you will receive advanced support, stay updated with the latest from InAlto and find out about new products and promotions.

Contents

<u>2</u>	<u>Welcome</u>
<u>4</u>	<u>Safety Instructions</u>
<u>5</u>	<u>Before First Use</u>
<u>6</u>	<u>Fridge Tips</u>
<u>7</u>	<u>Freezer</u>
<u>8</u>	<u>Crisper Drawer</u>
<u>9</u>	<u>Your Integrated Fridge</u>
<u>10</u>	<u>Using Your Fridge</u>
<u>12</u>	<u>Defrosting the Fridge</u>
<u>13</u>	<u>Defrosting the Freezer</u>
<u>14</u>	<u>Installation</u>
<u>35</u>	<u>Maintenance & Cleaning</u>
<u>36</u>	<u>Troubleshooting</u>
<u>38</u>	<u>Usage Tips</u>
<u>41</u>	<u>Technical Specifications</u>
<u>42</u>	<u>Your Receipt</u>
<u>43</u>	<u>Purchase Details</u>
<u>44</u>	<u>Warranty Information</u>

Customer Care

InAlto recommends the use of original spare parts. When contacting our customer service team on 1300 11 4357, please ensure that you have the following information at hand (which can be found on your appliances' rating plate).

- Model Number
- Serial Number

Safety Instructions

- Never store inflammable or explosive items and strong corrosive acids or alkalis in the appliance.
- This is a household appliance, which is produced in accordance with the national standard. It is intended for food storage only, not for storage of blood, medicine and biological products.
- To prevent risk of fire, keep the appliance away from petrol or any other inflammables.
- To prevent risk of electromagnetic interference or other accidents, do not place a microwave oven on top of the refrigerator or use any electric appliance inside the refrigerator.
- Do not allow children to play with or near the appliance.
- The internal surface of freezer compartment is very cold when the appliance is running. Do not touch the surface especially when hands are wet.
- Do not splash water onto the appliance. Keep it away from places of high humidity that may have adverse effect on the electric insulation performance.
- This appliance is designed to be used in ambient temperatures between 10 and 32°C. Use outside of this range may cause the appliance to fail.

Before First Use

You must allow the fridge to settle for at least twenty four hours prior to switching the power on.

It is recommended that you clean the interior of the appliance prior to first use, using a solution of bicarbonate of soda and warm water and then thoroughly drying the interior.

The fridge may have an odour to it at first use. This will disappear as the appliance cools.

Please note:

If you switch the appliance off, you should allow five minutes before switching it on again to prevent unnecessary damage to the compressor.

Never store inflammable or explosive items and strong corrosive acids or alkalis in the appliance.

This fridge cools your food by making the inside back of the cavity cold. It is normal for frost to build up on this surface; it then dissipates and drains through a small drain at the bottom, where it evaporates harmlessly.

Fridge Tips

- Never put liquids in the refrigerator uncovered.
- Never put hot foods in the refrigerator. Warm food should be allowed to cool to room temperature before being put into the refrigerator.
- Nothing should rest against the rear wall of the refrigerator, as this will cause frost and possible condensation problems which will be difficult to remove.
- Make sure food is clean and any extra water is wiped away before putting into the fridge.
- Wrap or cover food before putting into the fridge. This will help prevent the loss of moisture, keep food fresh and avoid unpleasant odours.
- Sort foods prior to storing. Any foods to be used soon should be stored at the front of the shelf to prevent deterioration caused by the door being open for prolonged periods.
- Do not overfill the fridge. There should be sufficient space between the foods to allow the cool air to circulate.
- Thawing frozen foods in the fridge compartment will help to keep the temperature low and save energy.
- Never store raw meats on shelves above cooked meats or other produce. This will help to prevent juices from raw meat contaminating other foodstuffs.

Freezer Tips

- The freezer compartments are designed to store only frozen food.
- Never put hot or warm foods in the freezer, allow them to cool fully before putting them into the freezer.
- Follow the instructions on the food packaging for storage of frozen food. If no information is provided, foods should not be stored for more than three months after the purchase date.
- Store food in small packages (ideally less than 1kg). This reduces the freezing time and improves the quality of the food after thawing.
- Wrap food before putting into the freezer. To stop the wrapping sticking together, ensure it is dry.
- Label the food before freezing with information including type of food and dates of storage and expiry.
- Once food is thawed, it must not be refrozen. Only defrost as much food as is required to prevent wastage.
- Bottled or canned drinks should not be stored in the freezer compartments as they could explode.
- The maximum amount of fresh food that can be frozen within a 24 hour period is 3.8 kg for this **Model**
- Do not attempt to freeze more than the maximum amount.
- To freeze fresh food more quickly, switch on the super freeze function a few hours prior to placing the food in the freezer.

Crisper Drawer

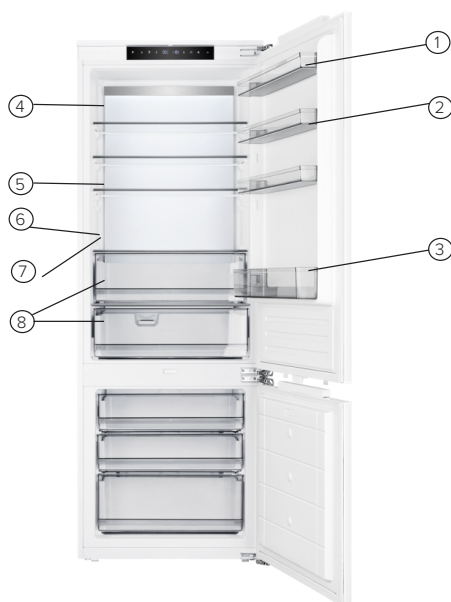
The crisper drawer within this appliance features a humidity level adjustment slider. Vegetables and similar produce that are subject to wilting (e.g. rocket, spinach leaves, herbs such as basil etc.) should be kept in the crisper drawer and the adjustment slider kept closed (fully to the left - high). By keeping the adjustment slider closed, water vapour is held in the drawer and subsequently greens are kept crisper and fresher for longer.

By contrast, fruits that are susceptible to rotting should be stored in the crisper drawer with the humidity adjustment slider fully open (to the right - low). This will allow gases, emitted by certain produce and that accelerate the rotting process, to exit the crisper drawer. The drawer is marked high and low with vegetable and fruit symbols to aid you.

Your Integrated Fridge

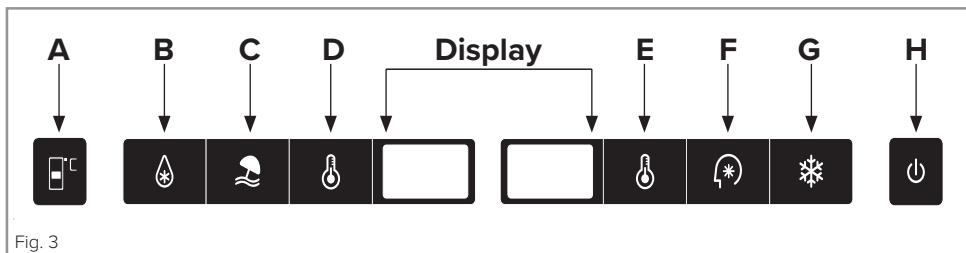
The fridge section is for short term food storage. Although low temperatures can be maintained, extended periods of food storage is not recommended. As the cold air circulates within the fridge, the temperature can vary between the different sections. As such, foods should be stored in different sections according to type. Section 7 is the coldest part of the fridge.

- | | |
|-----------------------------|---------------------------|
| 1. Butter, cheeses etc. | 5. Ready meals etc |
| 2. Food in jars and bottles | 6. Yogurts, preserves etc |
| 3. Drinks, e.g. milk | 7. Fresh meat and fish |
| 4. Cooked food | 8. Fruit and vegetables |



The fridge shelves can be moved according to the storage requirements within the fridge section. To move the shelf, lift up the rear section and then pull it outwards. To replace, slide the shelf back into the slot, and then lower the rear section.

Using Your Fridge



A. Adapt zone temperature adjustment sensor

This button is used to adjust the temperature within the adapt zone. Press this button once to alter the display to show the current temperature in the adapt zone, and then as many times as necessary until the desired level is selected. The settings range from -2°C and 3°C

B. Fast cooling function

Pressing this button will cause the fridge to operate at 2°C and automatically turns off after 2 and a half hours, during this time the button will be illuminated

C. Holiday function

Pressing this button activates the holiday function and the fridge temperature will operate at 17°C and the freezer at -18°C

Using Your Fridge (Continued)

D. Fridge temperature adjustment

This button is used to adjust the temperature within the fridge. Press this button once to activate adjustment, and then as many times as necessary until the desired level is selected

Display

This is where you can see the current temperature in the fridge (left) and freezer (right)

E. Freezer temperature adjustment

This button is used to adjust the temperature within the freezer. Press this button once to activate adjustment, and then as many times as necessary until the desired level is selected

F. Smart function

This button automatically sets the fridge temperature to 5°C and the freezer temperature to -18°C

G. Fast freezing function

Pressing this button automatically starts the freezer working at a temperature of -25°C. After 6 hours the function stops and the temperature will revert back to its previous setting

H. On/off button

Hold this button down for 3 seconds to switch the appliance on or off

Defrosting the Fridge

The fridge is self-defrosting. Any water created will run out of the fridge through the channel at the back of the fridge. The defrosted water is collected in the evaporating tray at the back of the appliance and dissipated by evaporation.

Defrosting the Freezer

The freezer has a no frost system which is designed to prevent the heavy build up of ice. Under normal use, there should be no need to regularly defrost the freezer system.

To help in times of service or cleaning, the appliance has a forced defrost mode which can be activated by touching and holding sensors A and C in Fig. 3 for approximately 3 seconds. The refrigerator temperature adjustment sensor (A) will flash to confirm that the forced defrost function is active. This function should automatically deactivate once the freezer temperature has reached between 10 and 12°C.

Please note: If you are regularly finding a heavy build up of ice, or pools of water, in the freezer section then it is likely that the door is not sealing properly. This could be due to a defective door seal or an incorrectly fitted, or overly heavy, door. For more information see the troubleshooting section on ice on pages 24-25.

Installation

Important Safety Information

- This appliance must not be installed near heat sources, such as ovens or cooktops, or in damp environments.
- Always seek assistance from another person when moving or installing the refrigerator to prevent injury.
- Be cautious of sharp edges and wear appropriate personal protective equipment (PPE) during installation.

Positioning and Levelling

- Ensure the refrigerator is level by adjusting the front height-adjustable feet.
- The rear cooling system must not touch the back wall —a larger gap will enhance cooling efficiency.

Ventilation Requirements

Proper ventilation is crucial for the efficient operation and longevity of your refrigerator. Failure to adhere to these guidelines may result in excessive power consumption, system failure and voiding the warranty.

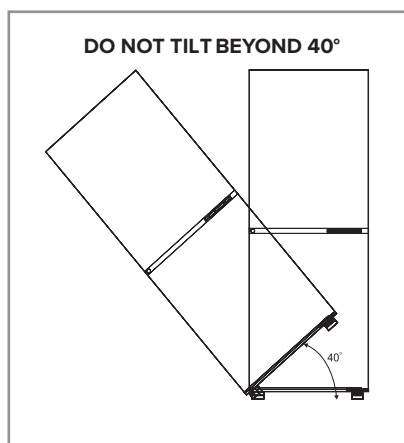
Installation Instructions (Continued)

Installation Requirements

- Ensure the cabinet housing allows for continuous airflow.
- The open channel at the rear of the cabinet should have a depth of 40–50mm to facilitate efficient cooling.
- Do not obstruct the top ventilation area of the cabinet; this ensures heat can escape effectively.

Important Notes

- The more air that can circulate in and out of the installation space, the better the appliance will operate.
- Blocking ventilation areas can cause overheating, reducing the efficiency and lifespan of the refrigerator.
- If the furniture structure does not provide sufficient airflow, additional ventilation measures (e.g., additional vents) should be installed.
- Never tilt the refrigerator beyond 40° when moving or installing the appliance.



Installation Instructions (Continued)

Minimum Ventilation Clearances

Air Intake:

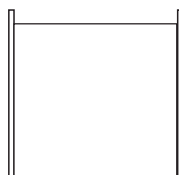
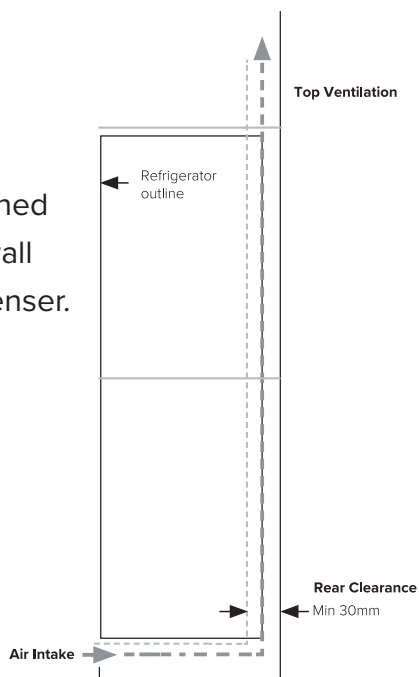
- An air intake should be provided somewhere in the cabinet run to allow free air in. In this example, a plinth vent is shown underneath the refrigerator .
- A cutout should be made in the plinth below the fridge/ freezer and this finished neatly using the air vent grille supplied.
- Alternatively, a thin section of the plinth can be removed to allow air into the unit (recommended 600mm × 10mm)

Rear Clearance:

- A minimum 30mm gap must be maintained between the refrigerator and the rear wall for proper air circulation over the condenser.
- Recommended rear vent opening: 500mm × 40mm.

Top Ventilation:

- The cabinet's top must allow airflow to vent into the room.
- Recommended minimum opening: 500mm × 40mm.
- If no free airflow is available into the room, a plinth vent or another form of ventilation must be installed.



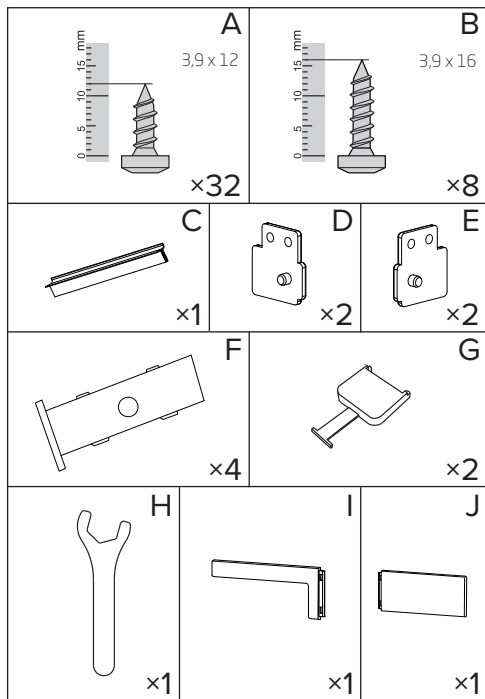
plan view of rear ventilation gap

Installation Instructions (Continued)

Installation Accessories

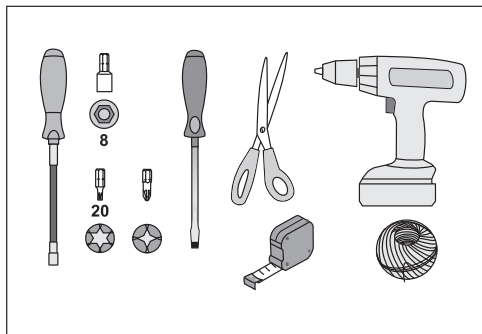
- A. 12mm Screws (×32)
- B. 16mm Screws (×8)
- C. Decorative Strip (×1)
- D. Hinge Spacer A (×2)
- E. Hinge Spacer B (×2)
- F. Hinge Cover (×4)
- G. Lowering Fixing Cover (×2)
- H. Spanner (×1)
- I. Reversed Hinge Cover (×1)*
- J. Reversed Hinge Cover (×1)*

* Optional: These items are only used only when reversing your door swing direction.



Tools Required

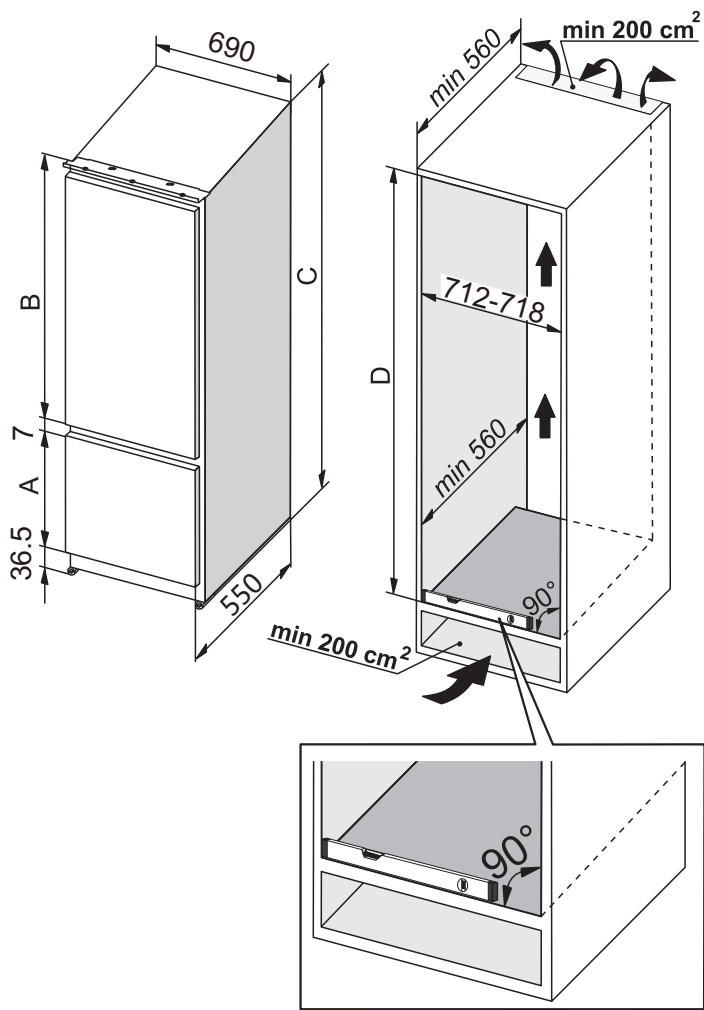
- Screwdriver
- Socket Wrench with 8mm Bit
- Torx Bits
- Scissors
- Measuring Tape
- Cordless Drill
- String



Installation Instructions (Continued)

Preparing the Cabinetry

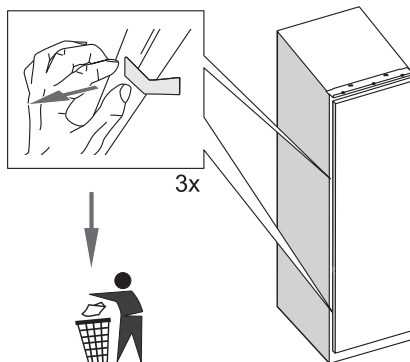
A (mm)	B (mm)	C (mm)	D (mm)
661	1232.5	1937	1939-1942



Installation Instructions (Continued)

Remove Protective Tape

- Identify the three strips of protective tape securing the refrigerator door.
- Carefully peel off each tape strip by hand.
- Dispose of the removed tape in a waste bin.

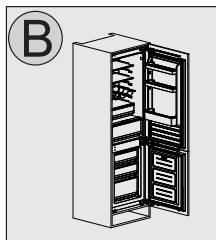
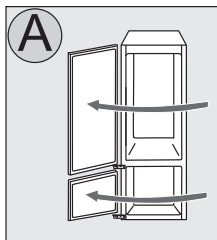


Please Note: The tape is used for transportation purposes and must be removed before completing the installation.

Door Swing Considerations

When deciding which way the fridge door should open, it's important to consider several factors for both practicality and functionality.

- Consider the layout of your kitchen, including traffic flow and where the fridge will be placed. Ensure that the door opens in a way that doesn't block other appliances or walking paths.
- Make sure the door opens in a way that provides easy access to the fridge's contents. Consider which side will be more convenient for everyday use.
- Ensure there is enough space for the door to fully open without hitting walls or other cabinets.



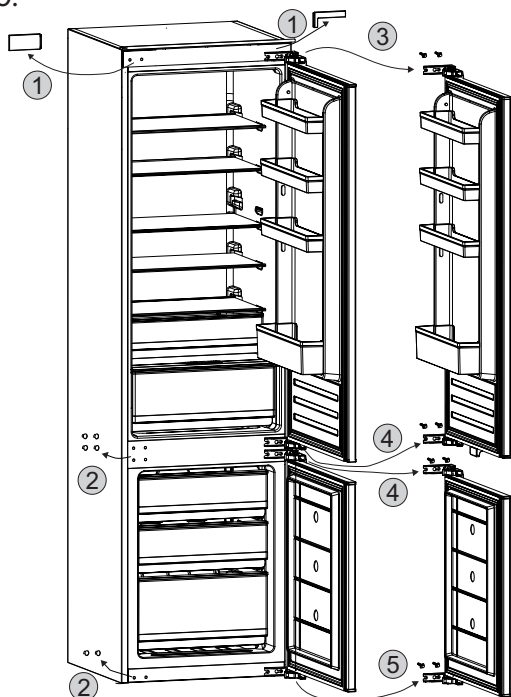
Installation Instructions (Continued)

Door Reversal Procedure

Please skip these steps and go to page 19 if not applicable.

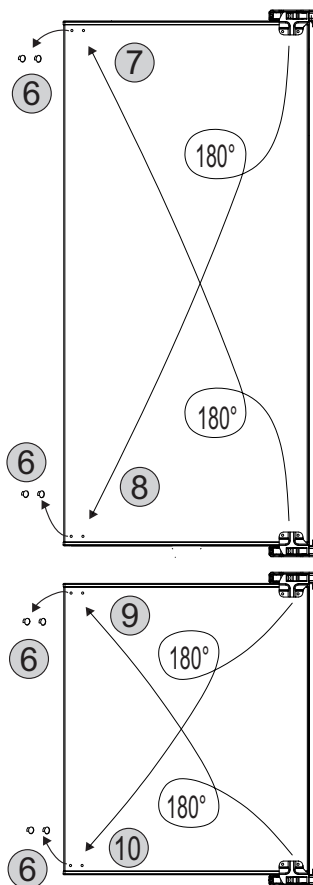
Caution: We recommend to have at least two people whilst performing this procedure.

1. Remove the Hinge Covers.
2. Carefully prise off the Cover Caps.
3. Support the doors at the bottom and remove the Top Upper Door Hinge saving the screws for Step 10.
4. Remove the Bottom Upper Door Hinge and the Top Lower Door Hinge saving the screws for Step 10.
5. Remove the Bottom Lower Upper Door Hinge saving the screws for Step 10.



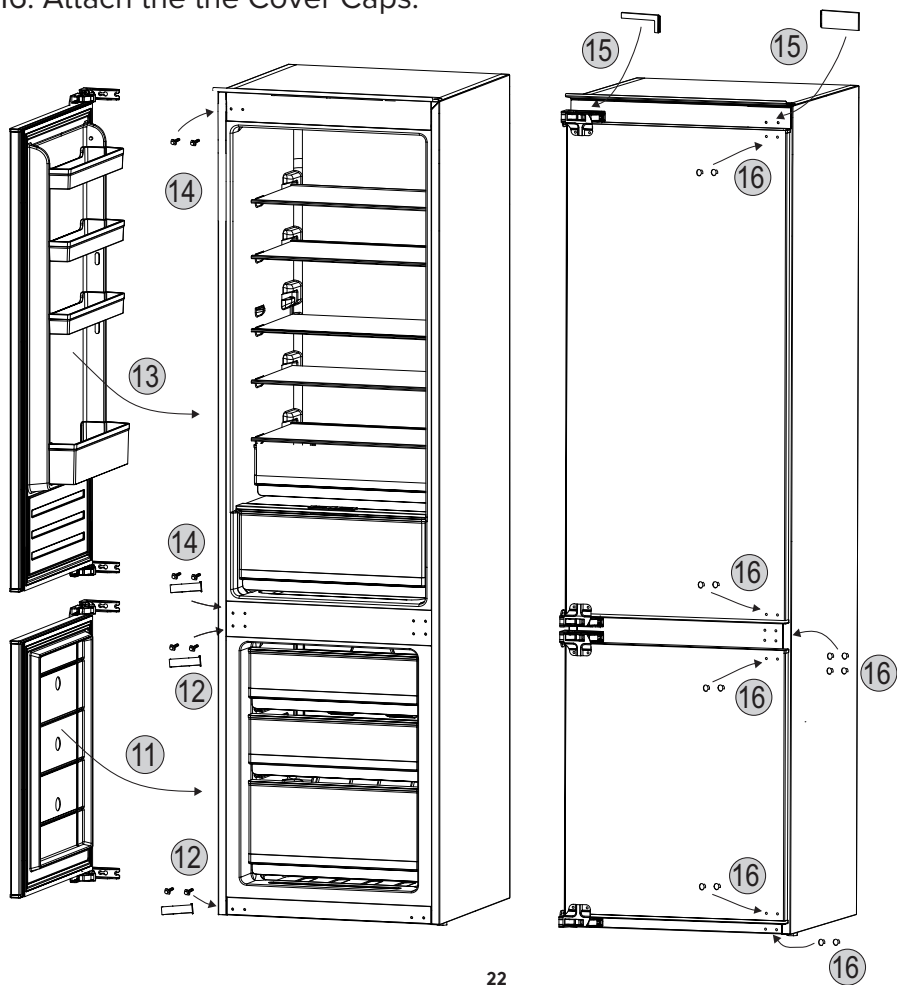
Installation Instructions (Continued)

6. Remove the Cover Caps.
7. Detach and remove the Bottom Upper Door Hinge, flip it and then reinstall it on the opposite side at the top.
8. Detach and remove the Top Upper Door Hinge, flip it and then reinstall it on the opposite side at the bottom.
9. Detach and remove the Bottom Lower Door Hinge, flip it and then reinstall it on the opposite side at the top.
10. Detach and remove the Top Lower Door Hinge, flip it and then reinstall it on the opposite side at the bottom.



Installation Instructions (Continued)

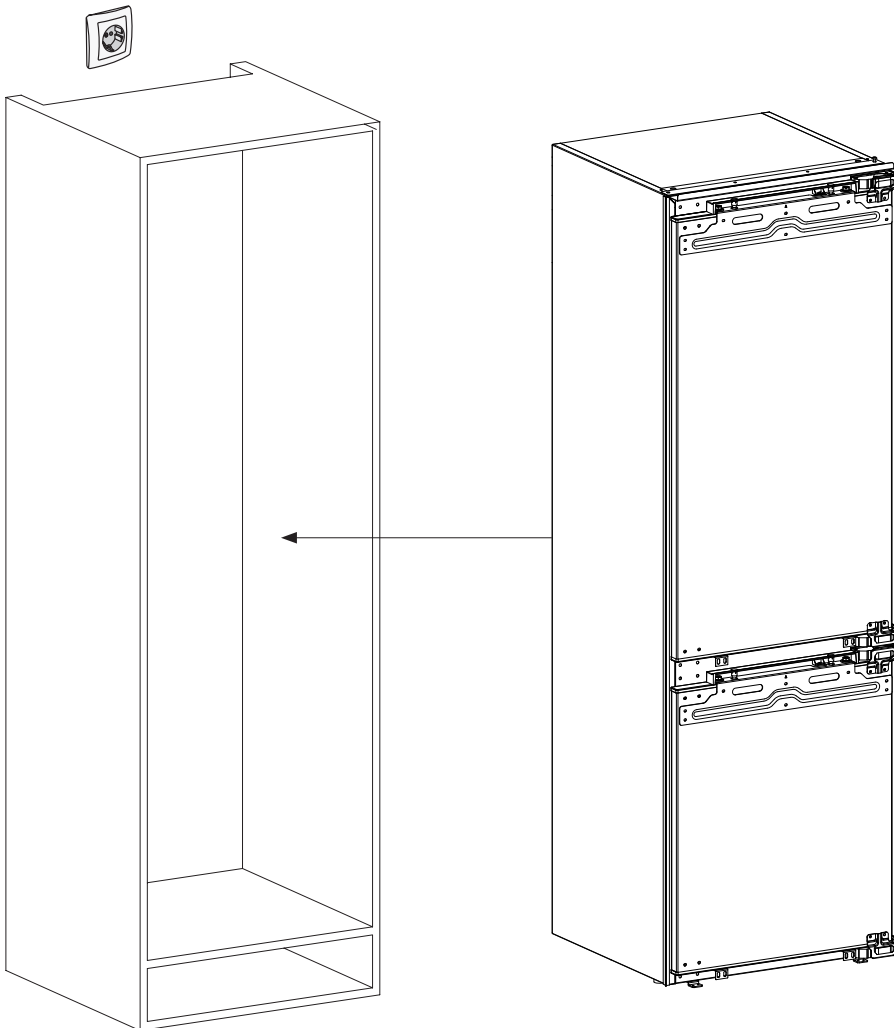
11. Move the Lower Door towards the refrigerator body.
12. Attach the Lower Door top and bottom hinges using the screws from steps 3–5.
13. Move the Upper Door towards the refrigerator body.
14. Attach the Upper Door top and bottom hinges using the screws from steps 3–5.
15. Attach the Reversed Hinge Covers.
16. Attach the the Cover Caps.



Installation Instructions (Continued)

Positioning the Unit

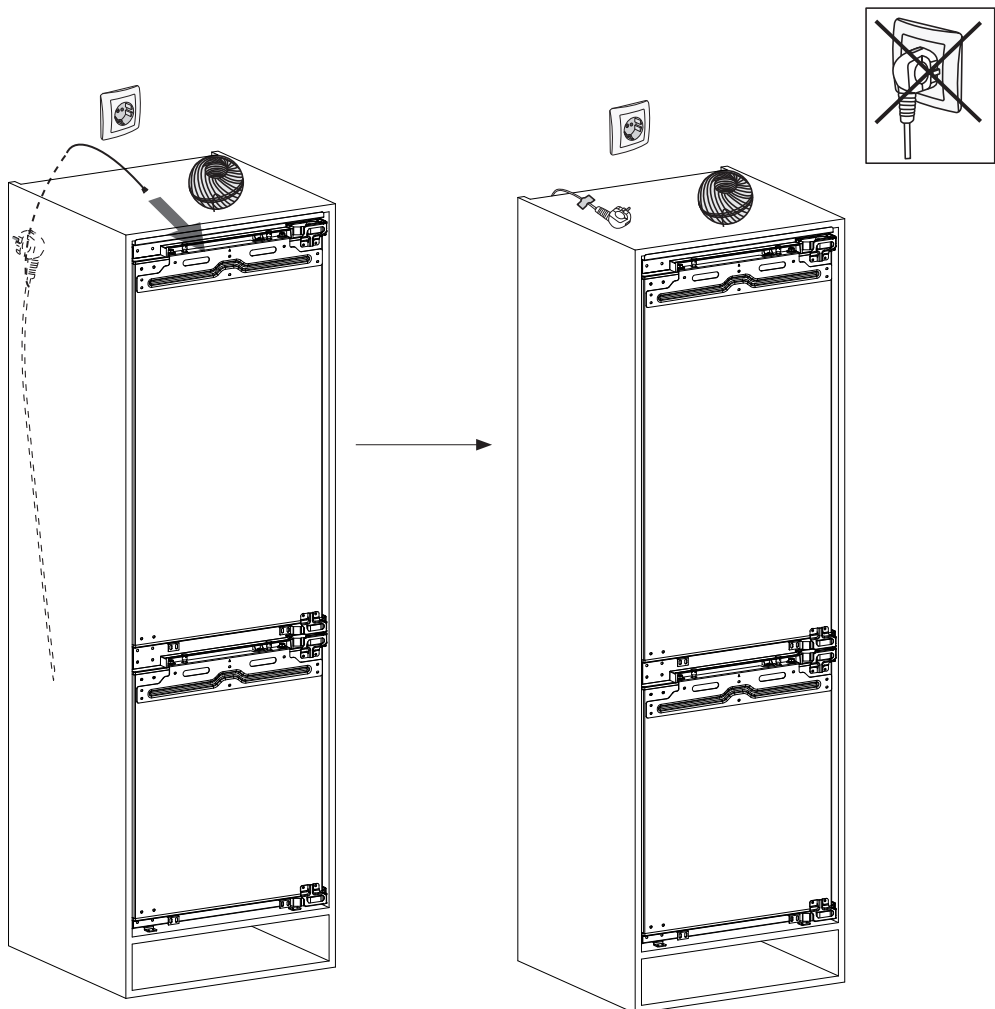
Carefully push the refrigerator into the cabinetry. Ensure the appliance is in the central position of the cavity. The ventilation system at the bottom of the appliance must not be blocked



Installation Instructions (Continued)

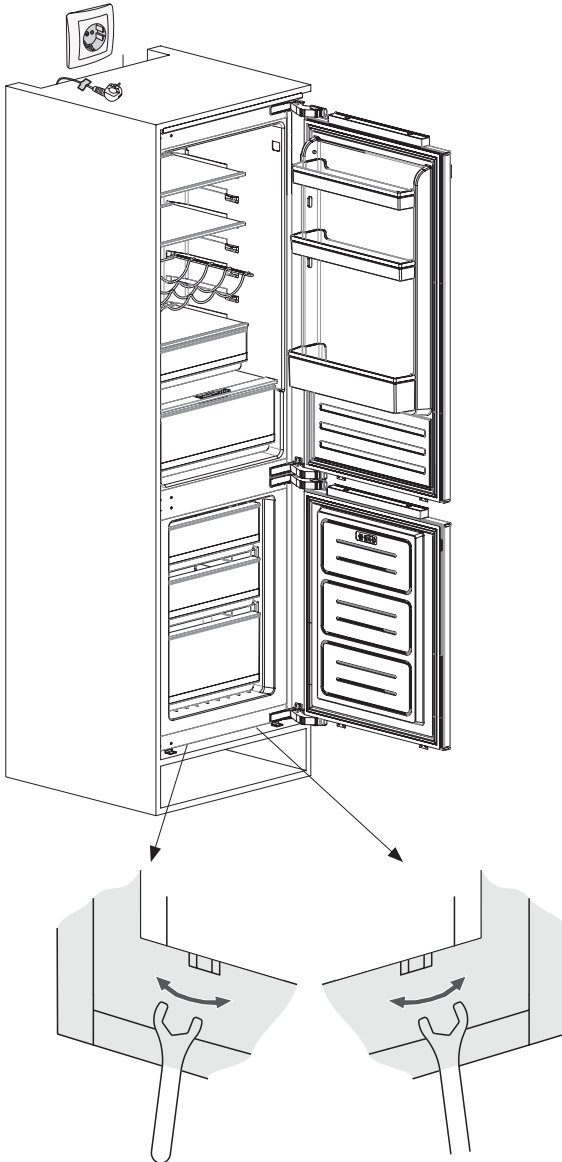
Feed the power cord through the top ventilation gap and use tape it to temporary keep it at the top of the cabinetry.

Caution: Do not plug in and power on the unit yet.



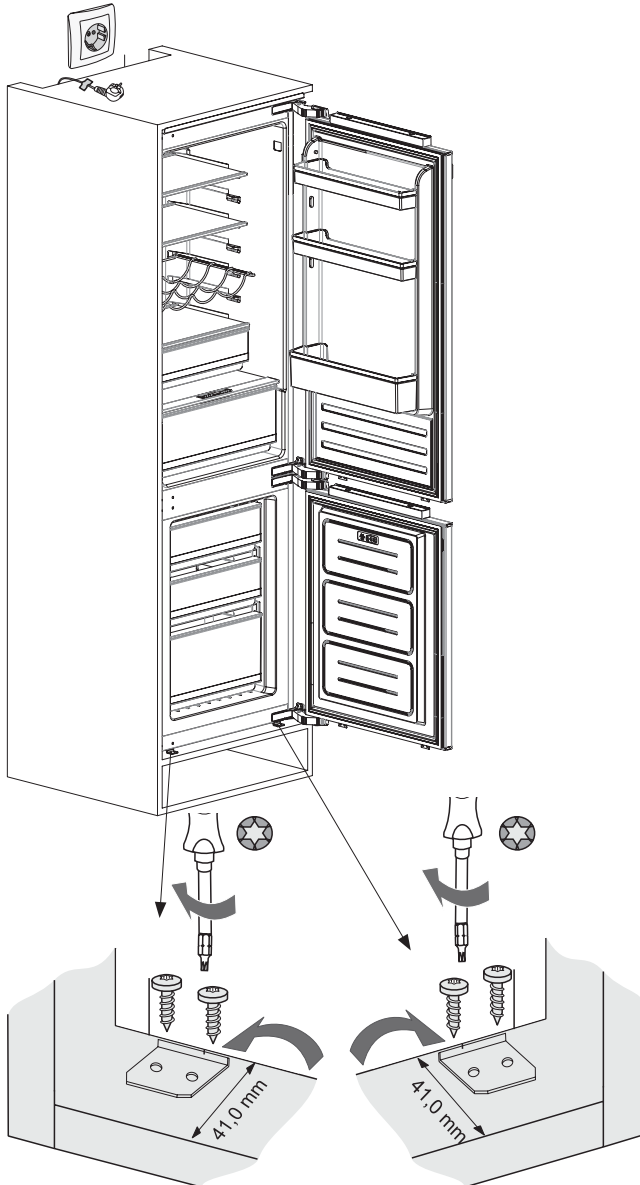
Installation Instructions (Continued)

To ensure the appliance is level, use the wrench to adjust the height adjustable feet at the front of the appliance.



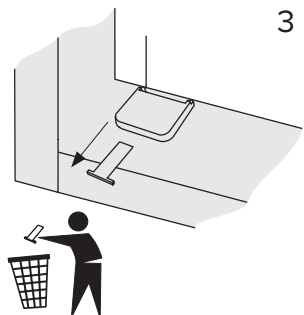
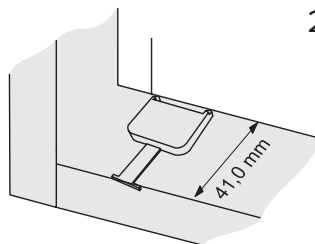
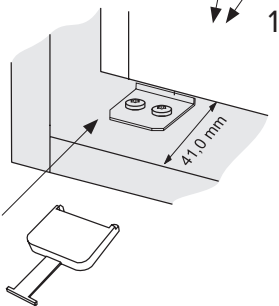
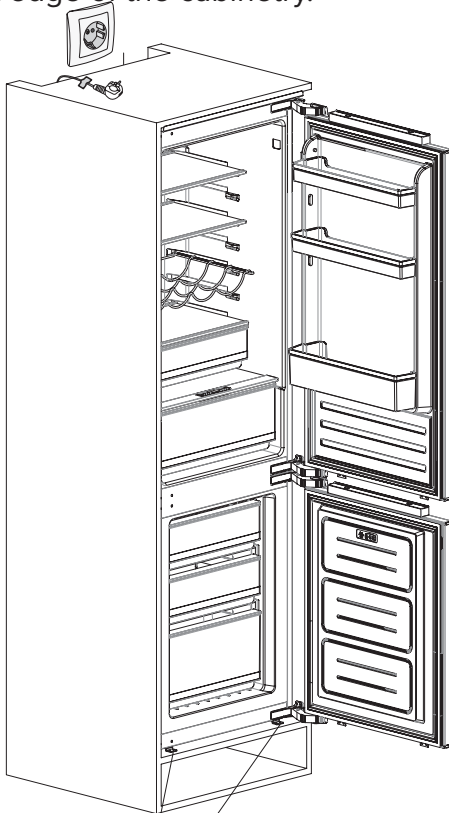
Installation Instructions (Continued)

Attach the Hinge Spacers ensuring the unit is 41.0mm away from the front edge of the cabinetry.



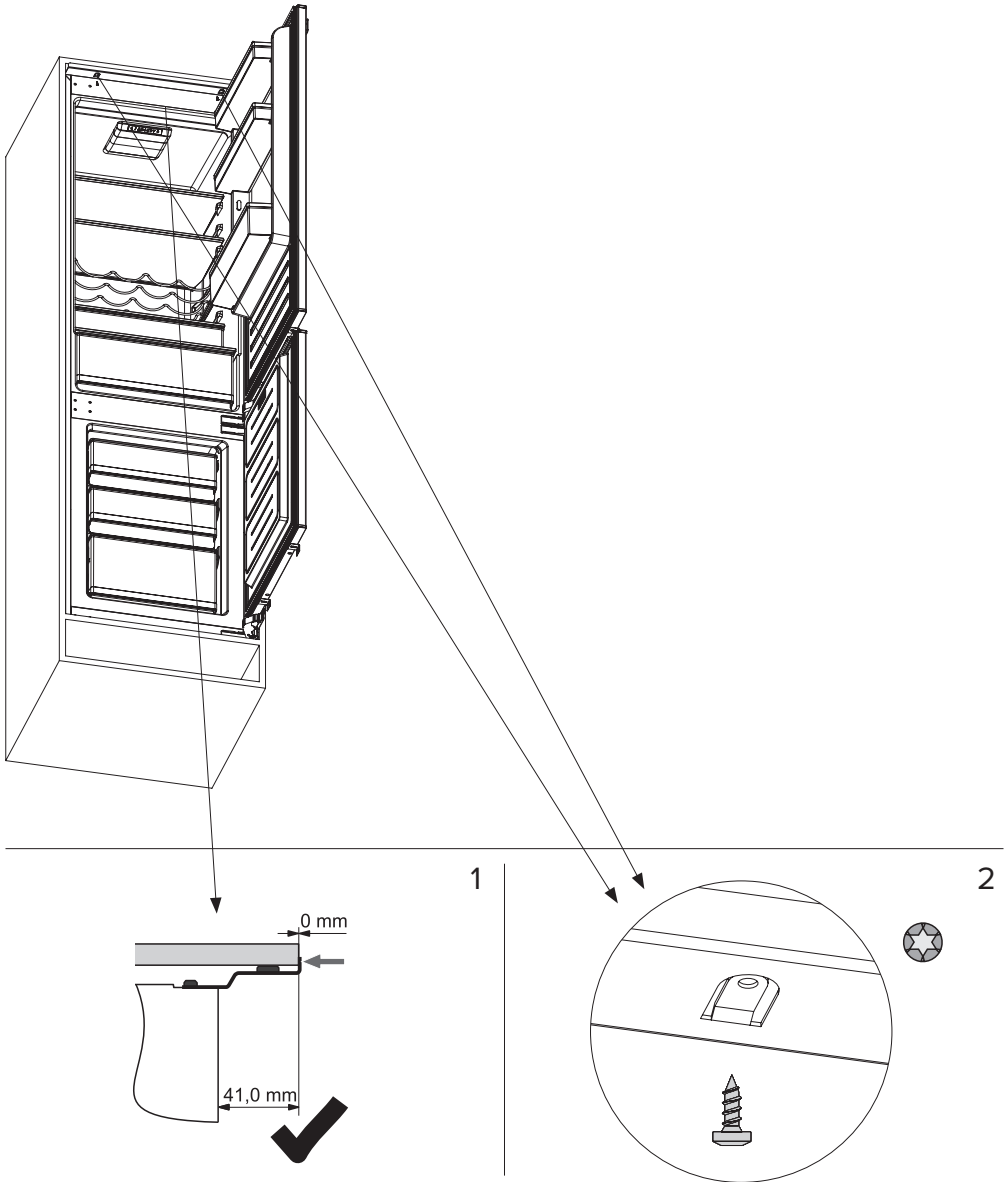
Installation Instructions (Continued)

Attach the Lowering Fixing Covers over the Hinge Spacers and dispose of the Gap Spacer after confirming the unit is 41.0mm away from the front edge of the cabinetry.



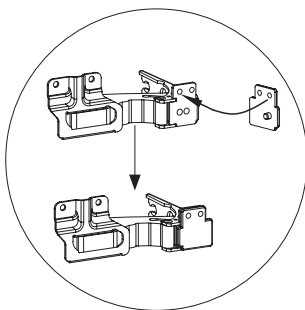
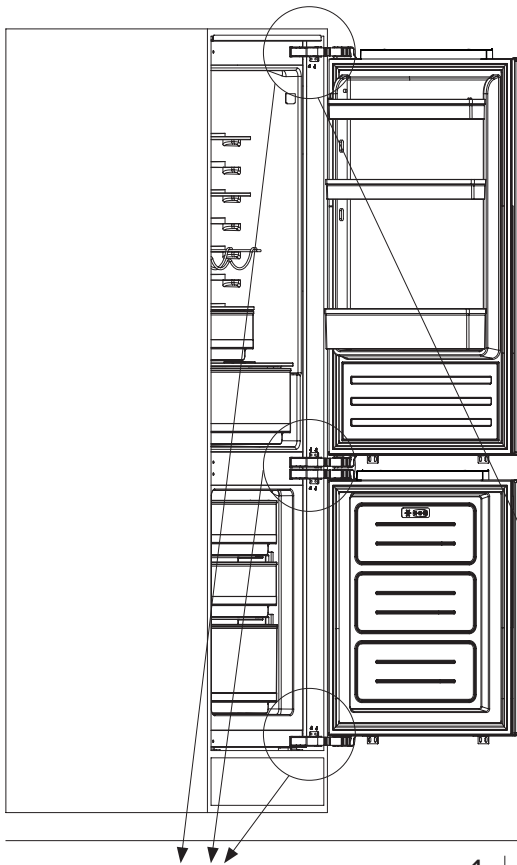
Installation Instructions (Continued)

Check that the top of the unit is also 41.0mm away from the front edge of the cabinetry. Secure the refrigerator to the cabinetry by using the supplied 12mm Screws.

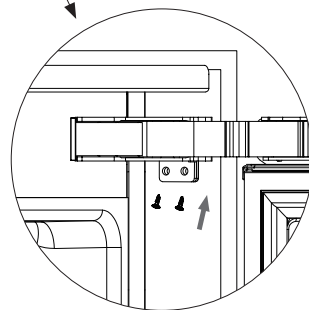


Installation Instructions (Continued)

Attach the Upper and Lower Hinge Plates A or B to the Upper and Lower Door Hinges (depending on the door swing direction) and attach them view the 16mm Screws.



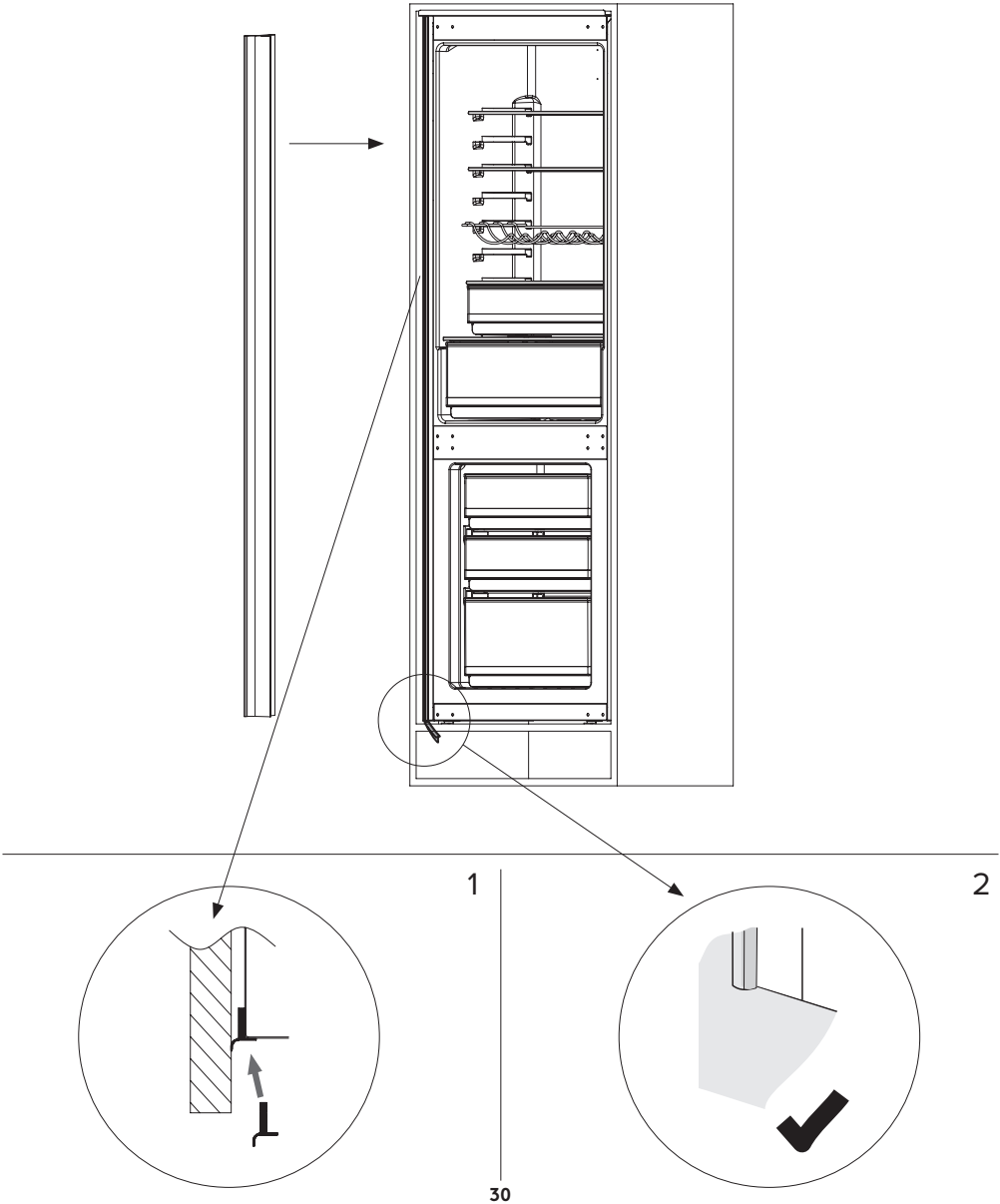
1



2

Installation Instructions (Continued)

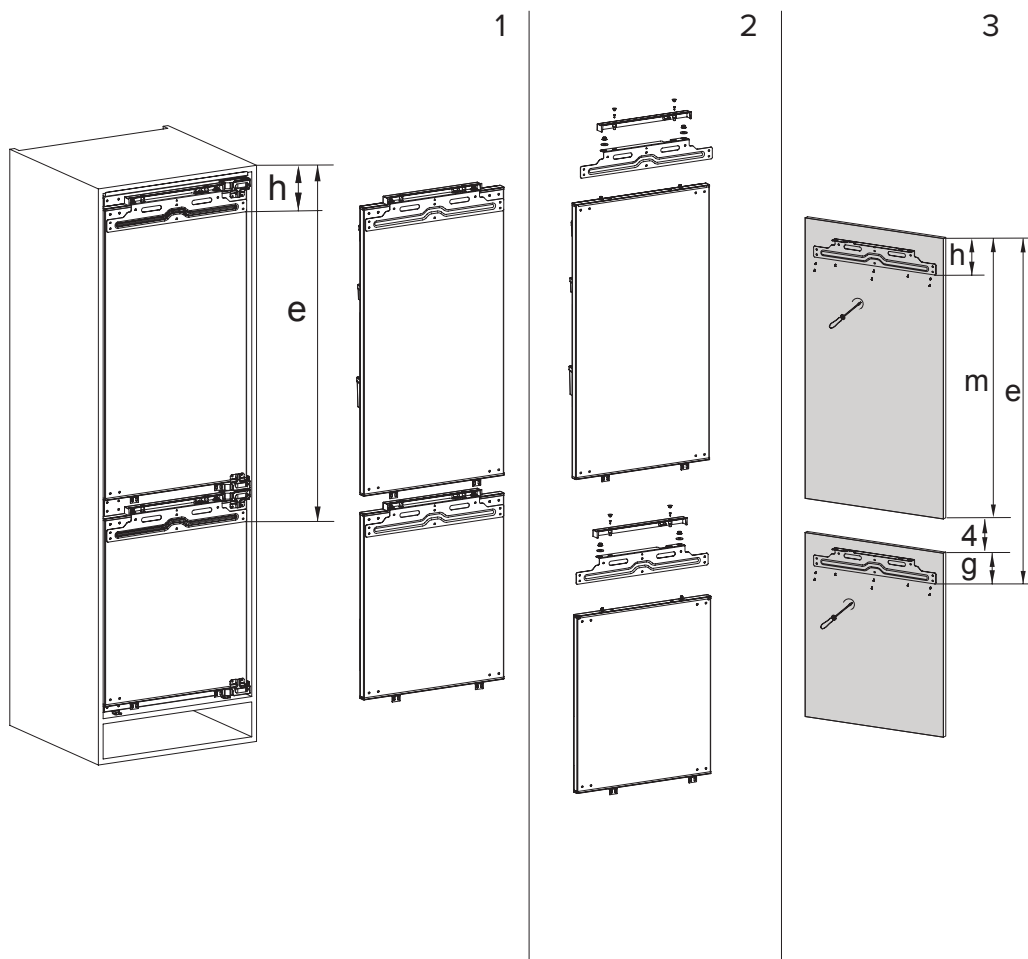
Attached the Decorative Strip using the tool provided and trim away any excess strip that is overhanging from the unit.



Installation Instructions (Continued)

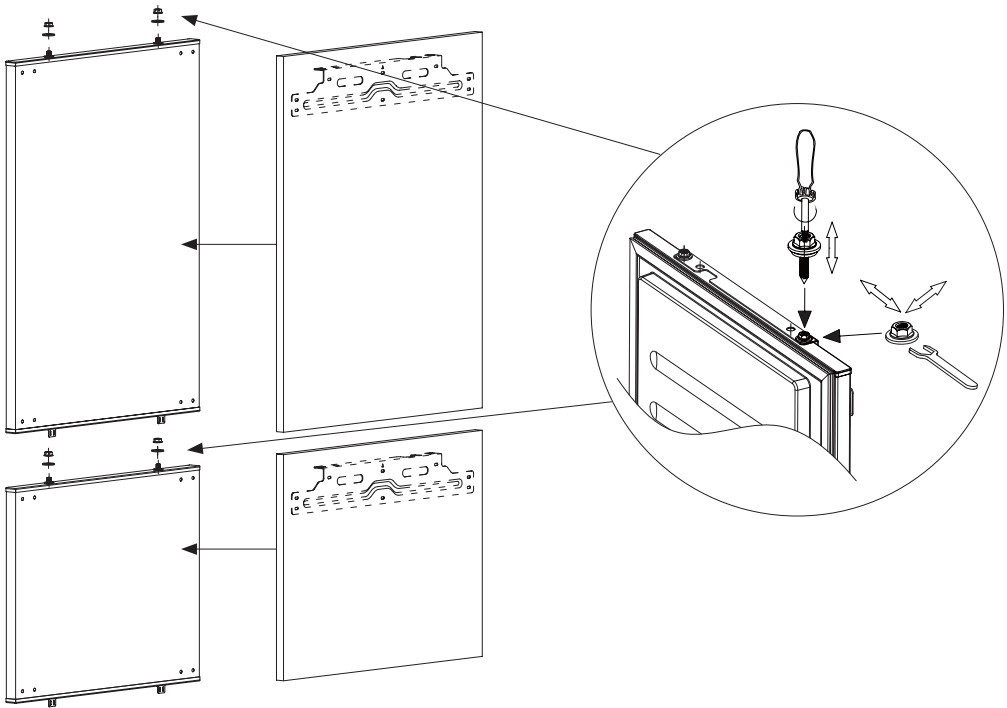
Attaching the Door Panel

Check that the doors can be opened and closed properly before tightening the screws on the top, hinge side and the bottom in the following steps. Measure the distance of **h** and **e** based on the position of the Door Brackets to the height of the cabinetry doors. Remove the Door Brackets from the unit and apply them to the cabinetry doors by fixing it with the screws provided.



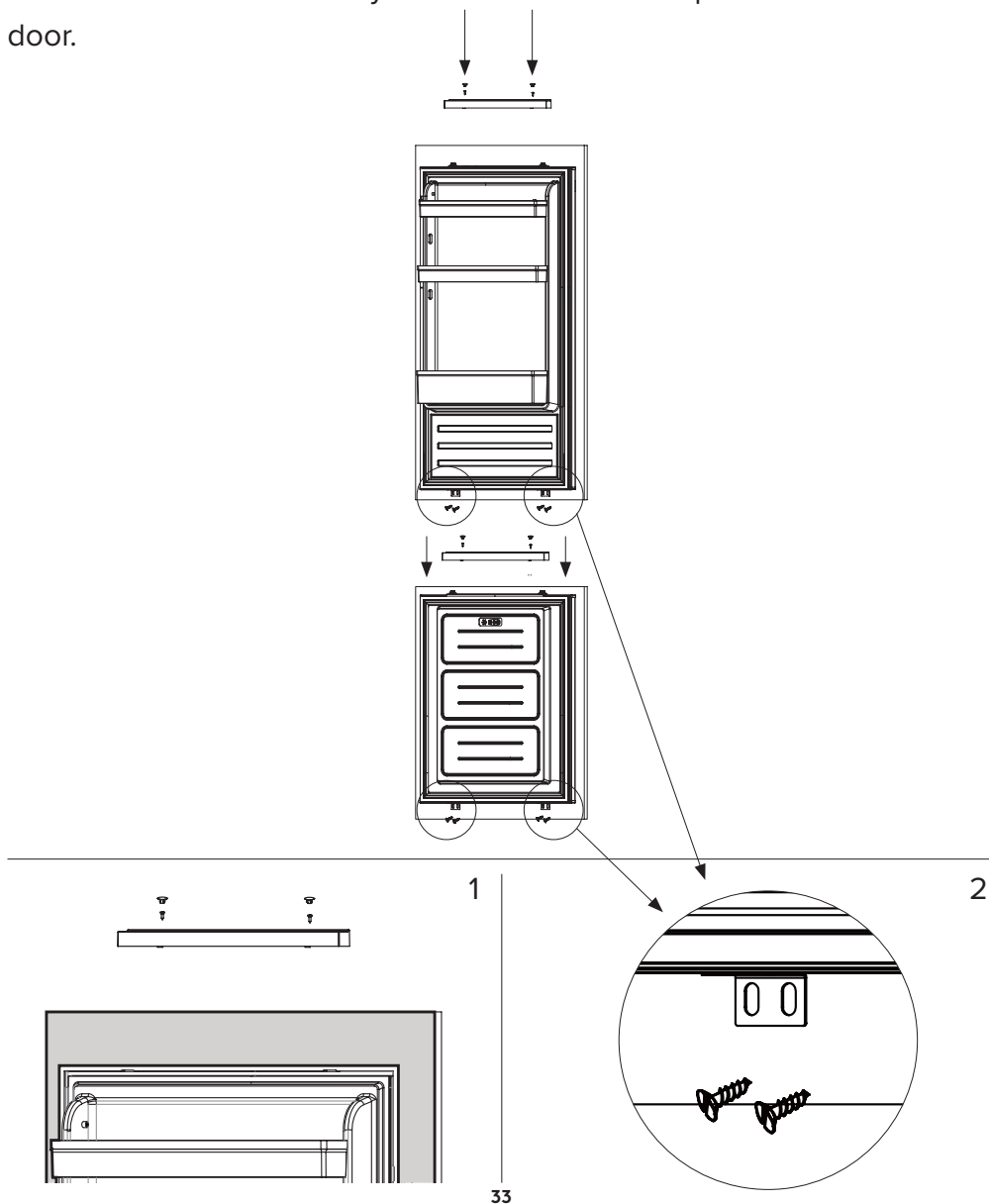
Installation Instructions (Continued)

Fix the cabinetry doors to the fridge and freezer doors using the Washer and Adjustment Bolts. Close the doors and check the alignment and make any necessary adjustments using a screwdriver and a spanner to move the cabinetry doors up and down, left and right.



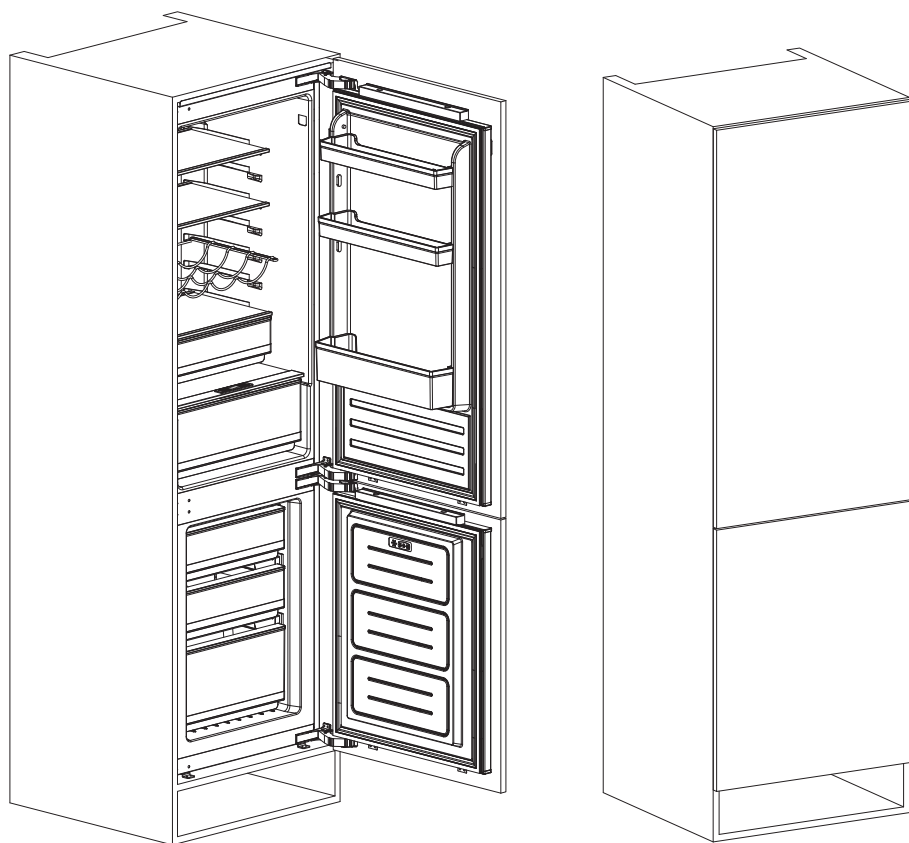
Installation Instructions (Continued)

With the fridge door open, apply the Top Decorative Cover over the Door Bracket. Then use the screws to fix the fixing brackets to the base of the door to the cabinetry. Perform the same steps for the freezer door.



Installation Instructions (Continued)

After installation, check all alignments to see if any needs adjusting and dispose of any unused components. Check that the whole door assemblies operates smoothly and that the door seal of the refrigerator and freezer is still creating a seal.



Important

After completing the installation, check that the appliance is secured within the unit and that the door(s) close and open properly. If there is no resistance from the door seals when opening the doors, then it is probable that the appliance and/or decor doors are not fitted properly.

Maintenance & Cleaning

Always disconnect the appliance from the power supply before any cleaning or maintenance.

The fridge and freezer sections should be cleaned using a solution of bicarbonate of soda and lukewarm water. Do not use abrasive products or detergents. After washing, rinse and dry thoroughly.

Clean the shelves and balconies separately by hand with a mild solution of washing up liquid and water. Do not put them in the dishwasher.

If the appliance is not to be used for prolonged periods of time, unplug and clean the appliance. The doors should be left slightly ajar to prevent the formation of mildew and unpleasant odours.

Troubleshooting

If you have any problems with your appliance, you should check the troubleshooting prior to calling ...Customer Care.

If the appliance is not working, check:

- That there is power to the appliance.
- The house fuses are intact and the fuse in the plug has not blown.
- The fridge has not been turned off
- The plug socket is functioning fine. To check this, plug another electrical appliance in to see if the socket is faulty.

If the appliance is working, but not very well, check:

- The appliance is not overloaded.
- The thermostat is set to an appropriate temperature.
- The doors are closing properly.
- The cooling system at the rear of the appliance is clean and free of dust, and not touching the rear wall.
- There is enough ventilation at the side and rear walls.

If the appliance is noisy, check:

- The appliance is level and stable.
- The side and rear walls are clear, and there is nothing resting on the appliance.
- Note: The cooling gas in the refrigerator may make a slight bubbling or gurgling noise, even when the compressor is not running.

If the appliance is beeping, check:

- That the doors are closed. An alarm will sound after 60 seconds of a door being open.

If there's water in the base of the refrigerator compartment, check:

- The drain hole at the back of the compartment is clear

Troubleshooting (Continued)

If ice has formed on the back wall of the fridge:

- It is normal for some ice droplets to form on the back wall of the fridge. This does not constitute a fault with the appliance.
- Ensure that no items inside the fridge are in contact with the back wall.
- Check that there is some resistance when opening the door of the appliance. If it opens at the slightest touch it may mean that the door seal needs to be replaced.
- Check the door seal for any kinks, debris or damage. If you notice any, and are unable to resolve the issue yourself, contact ... Customer Care so that the seal can be replaced.
- This can be due to the decor door(s) not being properly fitted. If you are at all unsure, ask your fitter to check the decor doors.

If excessive ice has formed in the freezer:

- Check that there is some resistance when opening the door of the appliance. If it opens at the slightest touch it may mean that the door seal needs to be replaced.
- Check the door seal for any kinks, debris or damage. If you notice any, and are unable to resolve the issue yourself, contact ... Customer Care so that the seal can be replaced.
- This can be due to the decor door(s) not being properly fitted. If you are at all unsure, ask your fitter to check the decor doors.

If one or more of the LED units within the appliance is not working:

- Contact ... Customer Care to arrange a service visit.

Some minor faults can be fixed by referring to the troubleshooting tips above. If not please contact our customer care team on **1300 11 4357** or visit our self help portal online **www.support.residentiagroup.com.au**.

Usage Tips

The information about the climate range of the appliance is provided on the rating plate. It indicates at which ambient temperature (that is room temperature in which the appliance is working) is optimal for the operation of the appliance.

Climate class		Allowable ambient temperature
SN	Extended Temperate	This refrigeration appliance is intended for use at an ambient temperature ranging between 10°C and 32°C
N	Temperate	This refrigeration appliance is intended for use at an ambient temperature ranging between 16°C and 32°C
ST	Sub Tropical	This refrigeration appliance is intended for use at an ambient temperature ranging between 16°C and 38°C
T	Tropical	This refrigeration appliance is intended for use at an ambient temperature ranging between 16°C and 43°C

Usage Tips (Continued)

Due to the natural circulation of the air in the appliance, there are different temperature zones in the refrigerator chamber. The coldest area is directly above the vegetable drawers. Use this area for all delicate and highly perishable food such as:

- Fish, meat, poultry
- Sausage products, ready meals
- Dishes or baked goods containing eggs or cream
- Fresh dough, cake mixtures
- Pre-packed vegetables and other fresh food with a label stating it should be stored at a temperature of approximately 4°C

The warmest area is in the top section of the door. Use this area for storing butter and cheese.

To achieve the most effective food preservation for the longest possible time and to avoid wasting any food, position the products as shown on page 10. In addition this figure illustrates the layout of drawers, baskets and shelves, which allows the most efficient use of energy.

Optimal temperature and storage conditions will extend product shelf life and optimise electricity consumption. Optimal storage temperature range should be stated on the food packaging.

THIS PAGE IS INTENTIONALLY LEFT BLANK

Technical Specifications

MODEL	IIF341
CAPACITY	341L
RATED VOLTAGE	220-240V~ 50Hz
REFRIGERANT	R600a, 60g
ENERGY RATING (MEPS)	3.5 Stars
NET/GROSS WEIGHT	84kg/90kg
PRODUCT SIZE (W x D x H mm)	690 x 550 x 1937mm

Attach your receipt
to this page



Purchase Details

For future reference, please record the following information in the form below.
The product details can be found on the rating plate, and purchase details which
can be found on your sales invoice.

STORE DETAILS

STORE NAME |

ADDRESS |

TELEPHONE |

PURCHASE DATE |

PRODUCT DETAILS

MODEL NO. |

SERIAL NO.* |

Warranty Information

AUSTRALIAN WARRANTY TERMS & CONDITIONS REFRIGERATION APPLIANCES

This document sets out the terms and conditions of the product warranties for Residentia Group Appliances. It is an important document. Please keep it with your proof of purchase documents in a safe place for future reference should you require service for your Appliance.

1. IN THIS WARRANTY

- (a) 'acceptable quality' as referred to in clause 10 of this warranty has the same meaning referred to in the ACL;
 - (b) 'ACL' means Trade Practices Amendment (Australian Consumer Law) Act (No.2) 2010;
 - (c) 'Appliance' means any Residentia Group product purchased by you accompanied by this document;
 - (d) 'ASR' means Residentia Group authorised service representative;
 - (e) 'Residentia Group' means Residentia Group Pty Ltd of 165 Barkly Avenue Burnley VIC, ACN 600 546 656 in respect of Appliances purchased in Australia;
 - (f) 'major failure' as referred to in clause 10 of this warranty has the same meaning referred to in the ACL and includes a situation when an Appliance cannot be repaired or it is uneconomic for Residentia Group, at its discretion, to repair an Appliance during the Warranty Period;
 - (g) 'Warranty Period' means:
 - (i) where the Appliance is used for personal, domestic or household use (i.e. normal single family use) as set out in the instruction manual, the Appliance is warranted against manufacturing defects for 24 months (or 36 months where a valid extended warranty registration has occurred), following the date of original purchase of the Appliance;
 - (h) 'you' means the purchaser of the Appliance not having purchased the Appliance for re-sale, and 'your' has a corresponding meaning.
- 2. This warranty only applies to Appliances purchased and used in Australia and is in addition to (and does not exclude, restrict, or modify in any way) any non-excludable statutory warranties in Australia.
 - 3. During the Warranty Period Residentia Group or its ASR will, at no extra charge if your Appliance is readily accessible for service, without special equipment and subject to these terms and conditions, repair or replace any parts which it considers to be defective. Residentia Group or its ASR may use remanufactured parts to repair your Appliance. You agree that any replaced Appliances or parts become the property of Residentia Group. This warranty does not apply to light globes, batteries, filters, seals or similar perishable parts.
 - 4. Parts and Appliances not supplied by Residentia Group are not covered by this warranty.
 - 5. You will bear the cost of transportation, travel and delivery of the Appliance to and from Residentia Group or its ASR. If you reside outside of the service area, you will bear the cost of:
 - (a) travel of an authorised representative;
 - (b) transportation and delivery of the Appliance to and from Residentia Group or its ASR, in all instances, unless the Appliance is transported by Residentia Group or its ASR, the Appliance is transported at the owner's cost and risk while in transit to and from Residentia Group or its ASR.
 - 6. Proof of purchase is required before you can make a claim under this warranty.
 - 7. You may not make a claim under this warranty unless the defect claimed is due to faulty or defective parts or workmanship. Residentia Group is not liable in the following situations (which are not exhaustive):

-
- (a) the Appliance is damaged by:
- (i) accident
 - (ii) misuse or abuse, including failure to properly maintain or service
 - (iii) normal wear and tear
 - (iv) power surges, electrical storm damage or incorrect power supply
 - (v) incomplete or improper installation
 - (vi) incorrect, improper or inappropriate operation
 - (vii) insect or vermin infestation
 - (viii) failure to comply with any additional instructions supplied with the Appliance;
- (b) the Appliance is modified without authority from Residentia Group in writing;
- (c) the Appliance's serial number or warranty seal has been removed or defaced;
- (d) the Appliance was serviced or repaired by anyone other than Residentia Group, an authorised repairer or ASR.
8. This warranty, the contract to which it relates and the relationship between you and Residentia Group are governed by the law applicable where the Appliance was purchased.
9. To the extent permitted by law, Residentia Group excludes all warranties and liabilities (other than as contained in this document) including liability for any loss or damage whether direct or indirect arising from your purchase, use or non use of the Appliance.
10. For Appliances and services provided by Residentia Group in Australia, the Appliances come with a guarantee by Residentia Group that cannot be excluded under the Australian Consumer Law. You are entitled to a replacement or refund for a major failure and for compensation for any other reasonably foreseeable loss or damage. You are also entitled to have the Appliance repaired or replaced

if the Appliance fails to be of acceptable quality and the failure does not amount to a major failure. The benefits to you given by this warranty are in addition to your other rights and remedies under a law in relation to the Appliances or services to which the warranty relates.

- 11. At all times during the Warranty Period, Residentia Group shall, at its discretion, determine whether repair, replacement or refund will apply if an Appliance has a valid warranty claim applicable to it.
- 12. Missing parts are not covered by warranty. Residentia Group reserves the right to assess each request for missing parts in a case by case basis. Any parts that are not reported missing in the first week after purchase will not provide free of charge.
- 13. To enquire about claiming under this warranty, please follow these steps:
 - (a) carefully check the operating instructions, user manual and the terms of this warranty;
 - (b) have the model and serial number of the Appliance available;
 - (c) have the proof of purchase (e.g. an invoice) available;
 - (d) telephone the numbers shown below.
- 14. You accept that if you make a warranty claim, Residentia Group and its ASR may exchange information in relation to you to enable Residentia Group to meet its obligations under this warranty.

IMPORTANT

Before calling for service, please ensure that the steps in point 13 have been followed.

Telephone contact

- **Service:** Please call 1300 11 HELP (4357)

The Australian Consumer Law requires the inclusion of the following statement with this warranty:

Our goods come with guarantees that cannot be excluded under the Australian Consumer Law. You are entitled to a replacement or refund for a major failure and for compensation for any other reasonably foreseeable loss or damage. You are also entitled to have the goods repaired or replaced if the goods fail to be of acceptable quality and the failure does not amount to a major failure.

THIS PAGE IS INTENTIONALLY LEFT BLANK

Warranty Information (Continued)

NEW ZEALAND WARRANTY TERMS & CONDITIONS REFRIGERATION APPLIANCES

To help care for your investment, be sure to register your appliance online. Registration will help you if you need to arrange service in the future, and serves as a record of your purchase – including critical information like model number and serial number – that you can refer to at any time.

Simply visit the below website, or ask your retailer for help: www.inalto.house/nz/registration

WARRANTY:

These products are covered by a warranty for a period of 24 months from the date of purchase, subject to the following conditions*. The warranty covers rectification free of charge of any fault arising from defective materials or components, or faulty workmanship or assembly.

* The conditions above mentioned are:

1. That the purchaser carefully follows all instructions packed with the product;
2. That the purchaser and/or installer carefully follows the installation instructions provided and complies with electrical wiring regulations, gas and/or plumbing codes;
3. That the purchaser carefully follows instructions provided in the owner's handbook relating to the proper use and care of the product and does not use the product for any purpose other than the domestic use for which it has been designed;
4. Commercial use of the product for professional or industrial purposes will void this warranty.;
5. That the product was purchased and installed in New Zealand;
6. That this warranty does not extend to:
 - a) optional glass lids for hobs apart from claims which relate to mechanical or physical damage thereof at the date of purchase;
 - b) 'consumable' parts such as light bulbs or filters;
 - c) damage to ceramic glass caused by liquid or solid spill-overs, lack of maintenance, or impact;
 - d) damage to surface coatings caused by cleaning or maintenance using products not recommended by the owner's handbook;
 - e) defects caused by normal wear and tear, accident, negligence, alteration, misuse or incorrect installations;
 - f) a product dismantled, repaired or serviced by any serviceman other than an authorised service agent;

- g) a product not in possession of the original purchaser;
 - h) damage caused by power outages or surges
 - i) damage caused by pests (eg. rats, cockroaches etc.)
7. That if the product is a freestanding microwave oven or small appliance it must be returned to the dealer/retailer for servicing. These products, unless stated otherwise, have a 12 month warranty from original date of purchase with 24 months on the microwave magnetron; Waste disposers have a 12 month warranty.
8. The provision of service under this warranty is limited by a 25km boundary from the retailer where the product was purchased except for microwaves. Such travelling outside of these limits will incur commercial cost to be paid by you, regulated by the number of kilometres travelled beyond the 25km limit (50km return trip). Microwaves are to be delivered to the nearest authorised service agent by the customer.

Please refer to your user manual for any further conditions that may apply to your specific model.

Nothing herein contained shall be construed in any way as excluding or limiting your rights under the Consumer Guarantees Acts 1993.

For Service please visit www.applico.co.nz/service or contact the dealer/retailer from whom you purchased the product from or call the 0800 number listed below. If you are unable to establish the date of purchase, or the fault is not covered by this warranty, or if the product is found to be in working order, you will be required to bear all service call charges.

Registration of this warranty constitutes acceptance of the terms and conditions of this warranty.

Should you require any assistance, please call Customer Services on 0800 763 448.

Distributed by Applico Ltd.
www.applico.co.nz
July 2019

After registering your appliance online, we recommend you fill out the below information for your reference and keep this warranty card in a safe place.

THIS WARRANTY IS VALID IN NEW ZEALAND ONLY.

DESIGNED IN MELBOURNE

INALTO?

FOR ALL AUSTRALIAN HOMES

WWW.INALTO.HOUSE



E2447