

F-HC3300C  
F-HC3300BR

F-H3300C  
F-H3300BR

F-HC1100C  
F-HC1100BR

F-GN1100C  
F-GN1100BR

SWT-FLTR-1,  
-2, -3, -4

SWT-3, -7

steaming  
hot water  
tap

filtered 98°C  
water on tap

  
**EMERSON**  
Appliance Solutions

**in sink erator**<sup>®</sup>  
solutions for sinks

Installation Manual  
English 2

Manual de instalación  
Español 8

Manuel d'installation  
Français 14

Installationshandbuch  
Deutsch 20

Installatiehandleiding  
Nederlands 26

Manual de Instalação  
Português 32

Руководство по установке  
Русский 38

Installationsvejledning  
Dansk 44

Manuale di installazione  
Italiano 50

Instrukcja instalacji  
Polski 56

설치 매뉴얼  
한국 62

安裝手冊  
中文 68

دليل التركيب  
اللغة العربية 74

## WHAT YOU SHOULD KNOW BEFORE YOU BEGIN

- ☐ For your satisfaction and safety, read all instructions, cautions and warnings before installing or using this steaming hot water tap.
- ☐ Make sure that all electrical wiring and connections conform to local codes.
- ☐ A standard, earth (grounded) electrical outlet is required under the sink for the tap's electrical power.
- ☐ The wall outlet powering your tap must have electrical power supplied to it continuously.
- ☐ This outlet must be fused and should not be controlled by the same wall switch that operates the food waste disposer. Fuse/circuit breaker required is 10 amp for 230 volt (10 amp for 220-240 volt UK) and 15 amp for 120 volt.
- ☐ To ensure proper operation, this unit is not intended to be flushed with chlorine. If you suspect elevated levels of chlorine in your water, it is recommended to use our water filtration system.
- ☐ In Australia, all plumbing and electrical work must be completed by a qualified tradesperson.
- ☐ To prevent damage or unit not operating properly, the water pressure must be between 172 kPa - 862 kPa (1.7 bar - 8.6 bar; 25 psi - 125 psi). Ambient (room) temperature between 10°C and 38°C. In Australia, an Australian water mark approved 350 kPa set pressure limiting valve and dual check valve must be used.
- ☐ Moving parts inside the tank causing a rattling noise is normal.
- ☐ If the supply cord is damaged, it must be replaced by the manufacturer, its service agent or similarly qualified persons in order to avoid a hazard.

## ADDITIONAL CONSIDERATIONS

In Australia and New Zealand, the installation must conform to AS3500.4.1 or AS/NZS 3500.4.2 (Clause 9.b).

**Important:** Always arrange the power cord so that it cannot come in contact with hot surfaces.

- ☐ Use this water heater only for its intended use as described in this manual.
- ☐ This appliance is not intended for use by persons (including children) with reduced physical, sensory or mental capabilities, or lack of experience and knowledge, unless they have been given supervision or instruction concerning use of appliance by a person responsible for their safety. Children should be supervised to ensure that they do not play with hot water tap. To reduce the risk of injury, close supervision is required when an appliance is used near children.
- ☐ Do not operate this product if it has been or appears to be damaged in any manner or after the product malfunctions, or is dropped. Return the complete product immediately to your retail dealer for inspection, and if necessary, adjustment or repair.

### ⚠ WARNING

**Electric Shock Hazard:** To reduce the risk of electric shock, do not immerse or expose the product, flexible cord or plug to rain, moisture or any liquid or when standing in or on damp or wet surfaces. If any electrical product falls into water, UNPLUG it immediately. DO NOT REACH INTO THE WATER. **Important:** Prior to reconnecting to the power supply, the product should be inspected by a qualified technician.

- ☐ Do not disconnect the product from the power supply by pulling on the cord.
- ☐ Do not use the product for other than its intended use as described in these instructions. The use of accessory attachments other than those recommended by the manufacturer may cause safety hazards.
- ☐ The recommended connection may be made to an existing cold water line with a branch terminating with a shutoff valve, a pressure relief and dual check non-return valve sited adjacent to the product.

### CAUTION

**Property Damage:** The flexible vent and outlet tubes must be correctly connected to the tap supplied by the manufacturer. They must not be obstructed or connected to a normal type tap or any other type. **Important:** Do not allow the unit to continuously boil.

- ☐ The filter is attached to cold water only.
- ☐ Systems certified for cyst reduction may be used on disinfected water that may contain filterable cysts.
- ☐ The filter is made in the USA.

## WHAT YOU NEED TO GET STARTED

### Equipment Required:

- ☐ Drill
- ☐ Compression fitting, T-fitting or saddle valve
- ☐ Adjustable spanner
- ☐ Phillips and flat blade screwdrivers
- ☐ Pencil
- ☐ Tape Measure
- ☐ Spirit level

### Equipment You May Need:

- ☐ Anchors for plasterboard
- ☐ Hole saw
- ☐ Basin nut wrench
- ☐ Hole punch

If you intend to use the sprayer hole in the sink for the hot water tap, you may need a 3.18mm plug or a 6.35mm cap (**not supplied**) for the sink spray hose line. **See Step 1B.** If you need to cut a mounting hole in the stainless steel sink, you may need a hole punch or a 35mm - 38mm hole saw made for cutting stainless steel.

### What if you don't have a sprayer hole or don't want to use it?

Many householders replace the soap dispenser in their sink with a steaming hot water tap. If drilling a hole into a stainless steel sink or worktop, you can cut a mounting hole for the tap with a hole saw for stainless steel, or you can use a hole punch.

**Hole size requirements:** – HC1100, HC3300 and H3300, a 35mm - 38mm hole is required.

– GN1100, hole requirement is 32mm - 38mm.

Consult a professional before drilling into a surface other than stainless steel.

## IN THIS PACKAGE



HC3300-1, -3  
H3300-1, -3,



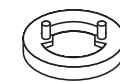
HC1100-1, -3



GN1100-1, -3



Semicircular Mounting Plate



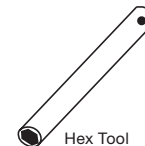
Brass Seat  
(HC3300, H3300)



Rubber O-Ring



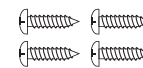
Hex Nut



Hex Tool



9.5mm White Tubes (2)



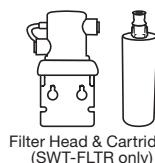
19mm Screws (4)



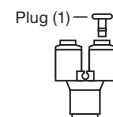
Back Flow Protection Valve  
(Australia/New Zealand only)



SWT-3  
SWT-FLTR-1, -3



Filter Head & Cartridge  
(SWT-FLTR only)



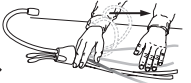
Y-Quick Connector



John Guest Fitting  
(Australia only)

## HOW TO USE THIS INSTRUCTION MANUAL

These instructions are separated into main sections, indicated by numbers, and subsections, indicated by capital letters. The manual is set-up this way to allow you to take a break at any point after completing a section or subsection without affecting the installation process.

<p><b>A</b></p> <p><b>2</b></p> 	<p><b>HC1100/GN1100</b></p> <ul style="list-style-type: none"> <li><input type="checkbox"/> Unpack hot water tap components.</li> <li><input type="checkbox"/> On a firm, flat surface, carefully straighten the copper tubing.</li> </ul>
<p><b>CAUTION</b></p> <p><b>3</b></p> <p><b>Property Damage:</b> Do not pinch or break copper tubing. Do not distort the last 25mm of tubing.</p>	<p><b>1</b></p>

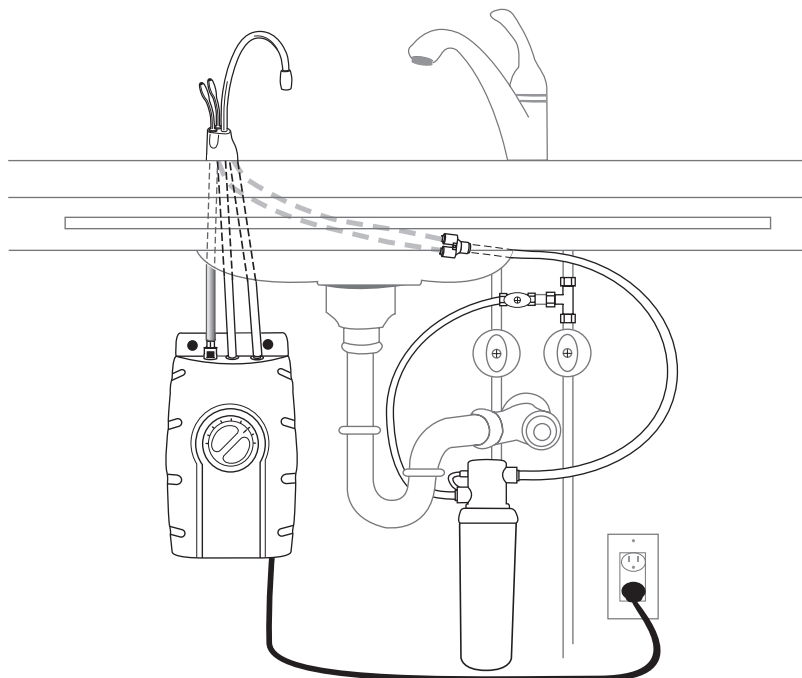
- 1** Provides a step-by-step narrative describing the installation step, with tick boxes that can be marked as you progress through the installation.
- 2** Contains simple illustrations that provide visual instruction to support the narrative.
- 3** CAUTIONS and WARNINGS that will require your attention during the step.

**⚠ WARNING** A potentially hazardous situation, which, if not avoided, could result in death or serious injury.

**⚠ CAUTION** Caution, used with the safety alert symbol, indicates a hazardous situation which, if not avoided, could result in minor or moderate injury.

**CAUTION** Caution, without the safety alert symbol, is used to address practices not related to personal injury.

## OVERVIEW OF A COMPLETED SET-UP



## START HERE PROPER INSTALLATION SHOULD TAKE ABOUT 2-4 HOURS

### PREPARATION

**1**

**A**

Required minimum from centre of hole to wall

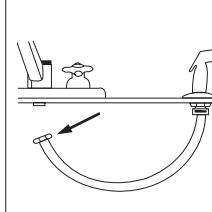
HC3300.....	64mm
H3300.....	64mm
HC1100.....	67mm
GN1100.....	83mm

Maximum counter thickness is 76mm.

The wall outlet for the tap must have power supplied to it continuously and must be fused. It should not be controlled by the same wall switch that operates the food waste disposer.

- ☐ Identify locations for the tap, tank and filter (if applicable).
- ☐ Check to make sure there is proper clearance (see chart at left) for tap handles to be fully opened.
- ☐ Check to make sure counter is not too thick (see chart at left).
- ☐ Make sure there is an earth (grounded) electrical outlet under the sink.

**B**

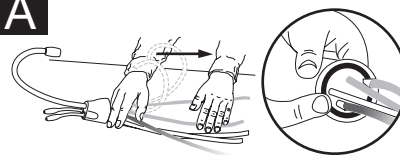


- ☐ Turn off water supply.
- ☐ If using the sink sprayer hose hole, remove nut that connects sprayer hose at bottom of tap.
- ☐ Using adjustable spanner, remove nut connecting sprayer washer flange in sprayer hole.
- ☐ Close hose opening with either a plug or a cap (**not supplied**).

If you have to drill through sink or worktop, you may need to rent or purchase the appropriate tools.

**2**

**A**



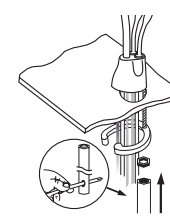
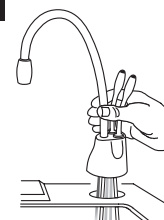
**HC1100/GN1100**

- ☐ Unpack hot water tap components.
- ☐ On a firm, flat surface, carefully straighten the copper tubing.
- ☐ Ensure that the black O-ring is properly seated in the base of the tap head (the groove on the underside of the tap).

**CAUTION**

**Property Damage:** Do not pinch or break copper tubing. Do not distort the last 25mm of tubing.

**B**



**HC1100/GN1100**

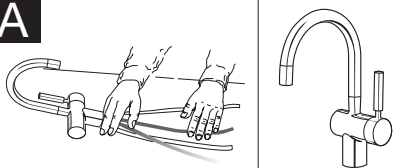
- ☐ Feed tubes down through the hole in the sink or countertop until the base is at rest.
- ☐ From under the sink, place the semi-circular mounting plate and hex nut onto the threaded stud. Ensure tap head is at desired angle.
- ☐ Insert screwdriver into hole on side of hex tool (creating a "T"), and use tool to tighten nut and secure tap.

An assistant may be needed to hold the tap in place while securing.

2

## INSTALLING THE TAP - HC3300/H3300

A



### CAUTION

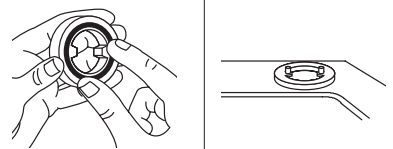
**Property Damage:** Do not pinch or break copper tubing. Do not distort the last 25mm of tubing.

#### HC3300/H3300

- ☐ Unpack hot water tap components.
- ☐ The recommended installation for this tap is the tap handle on the right.

The unique design allows the handle to be fully functional when placed to the right or left of the hot water tap. Determine preferred handle placement before installing.

B

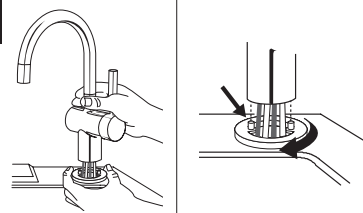


Wetting O-ring with water prior to inserting into brass seat helps hold ring in place during installation.

#### HC3300/H3300

- ☐ Insert rubber O-ring into groove on brass seat.
- ☐ Place brass seat, O-ring side down, over hole in sink or worktop.

C

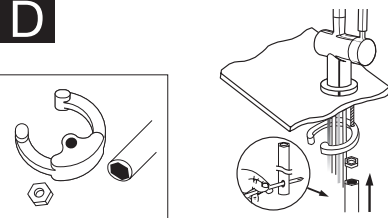


To ease feeding of tubes through hole, first insert blue tube with quick-connect attachment and then insert the remaining tubes.

#### HC3300/H3300

- ☐ Holding brass seat in place, feed tubes down through the hole in sink or worktop until base touches brass seat.
- ☐ Rotate brass seat until the two retaining studs fit into the holes on the tap base and base sits firmly on brass seat.

D



Semi-circular mounting plate should encircle all descending tubes and extend beyond sink hole when tight.

#### HC3300/H3300

- ☐ From under the sink, place the semicircular mounting plate onto the threaded stud.
- ☐ Place hex nut onto the threaded stud. Ensure tap handle is on preferred side and that tap head is at desired angle.
- ☐ Insert screwdriver into hole on side of hex tool (creating a "T"), and use tool to tighten nut and secure tap.

3

## MOUNTING THE TANK

A



Tank must be mounted level to ensure proper operation.

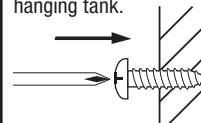
### WARNING

**Personal Injury/Property Damage:** Tank must be located within 400mm of tap and within 760mm or less of a standard earth (grounded) outlet. DO NOT extend plumbing or electrical lines.

- ☐ Select a spot under the sink to mount tank vertically within reach of both plumbing and electrical connections. The tank should be within 400mm or less of tap water lines and within 760mm or less of a standard earth (grounded) outlet.
- ☐ While holding tank in place on the spot selected for installation, use a pencil to mark locations for 2 hanging screws.

B

Leave 12mm for hanging tank.



Mount tank vertically in an area that allows clearance on the underside of the tank for drainage, if necessary. DO NOT over-tighten screws.

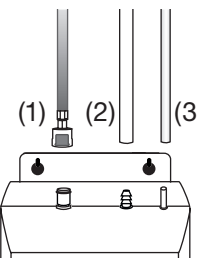
**Screws provided are for use in wood studs or cabinets only. Use wall anchors (not supplied) for installation into plasterboard.**

- ☐ Pre-drill 3mm pilot holes at marks.
- ☐ Turn screws into pre-drilled holes, leaving 6.4mm exposed.
- ☐ Hang the tank on the screws.
- ☐ Tighten the screws with only 1/2 turn clockwise.

4

## CONNECTING TAP TO TANK

A



- ☐ Without depressing the grey button, place the snap-connect fitting at the end of the **blue** tube onto the left plastic fitting on the tank, pushing until it clicks into place. (1)
- ☐ Slip the flexible **white** tube over barbed middle fitting and slide down approximately 12mm. (2)
- ☐ Slip the **small white** tube over the far right smooth fitting and slide down approximately 12mm. (3)
- ☐ Visually check for pinched or crimped tubes.

### CAUTION

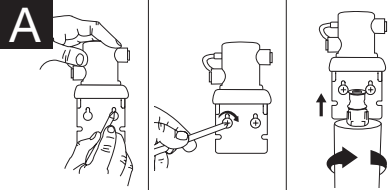
**Property Damage:** Pinched or blocked water lines may cause damage to the water tank. Check to make sure tubes are connected properly and are pushed in as mentioned.

Hose clamps are not needed for any of the connections.



5

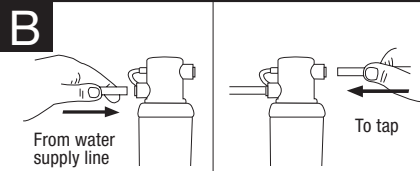
## INSTALLING FILTRATION



### WARNING

**Personal Injury:** Do not locate filter above an outlet or other electrical device. Install head and bracket so that connections require no stretching, kinking or pinching of tubing.

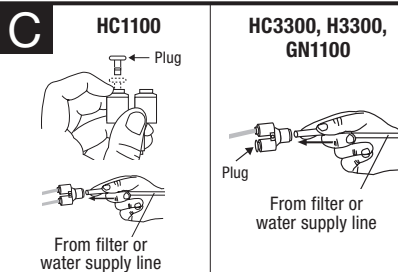
- ☐ Mark hole locations for filter head and bracket in a spot that allows for filter replacement.
- ☐ Drill 3mm starter holes and attach bracket to wall with wood screws, turning until snug.
- ☐ Remove red filter cap, insert filter cartridge into filter head and twist clockwise until "LOCK" arrow on the filter aligns with arrow on bracket.



### CAUTION

**Property Damage:** Tube runs need to form to the cabinet's contours to allow storage space with no sharp bends. Tubes need clean, perpendicular, burr-free cuts to ensure a true fit.

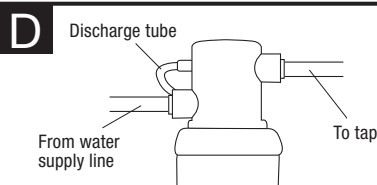
- ☐ Determine length of tubing required, then cut to length making sure the cut is perpendicular and burr-free.
- ☐ Insert a **white** 9.5mm tube into inlet side of filter head until it stops. **Press in again to ensure a secure fit.**
- ☐ Insert the other **white** tube into outlet side of filter head until it stops. **Press in again to ensure a secure fit.**



### CAUTION

**Property Damage:** Do not extend the copper lines farther than the 40cm provided.

- ☐ **HC1100 only:** Remove plug from "Y" quick connector by holding grey release ring and gently pulling plug out.
- ☐ Insert the copper tube(s) from the tap into the 9.5mm to 6.35mm quick-connector. **Press in again to ensure a secure fit.**
- ☐ Connect the **white** tube from the right outlet on the filter head into the quick-connector until it stops. **Press in again to ensure a secure fit.**

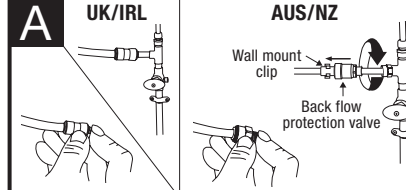


It is normal for approximately 60 ml of water to discharge when filter is removed.

- ☐ To redirect filter replacement water discharge, place 150mm clear tube over vent hole on the left side of filter head.

6

## FINAL WATER CONNECTION



### CAUTION

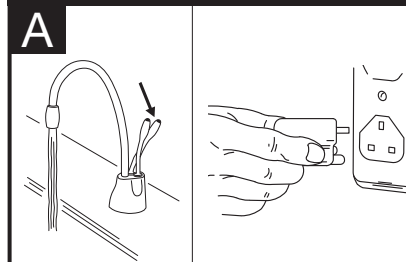
**Property Damage:** Join remaining tube to cold water supply only.

**AUS/NZ:** See instructions provided with valve kit  
At the other end of the white tube from the filter, press on the:

- ☐ **(UK/IRL)** 9.5mm to 15mm quick-connector and connect to a 15mm water supply.
- ☐ **(AUS/NZ)** 3/8" to 1/4" bspt John Guest fitting and connect to a female 1/4" bspt fitting water supply.
- ☐ **Press in again to ensure a secure fit.**

7

## FILL TANK & THEN CONNECT POWER

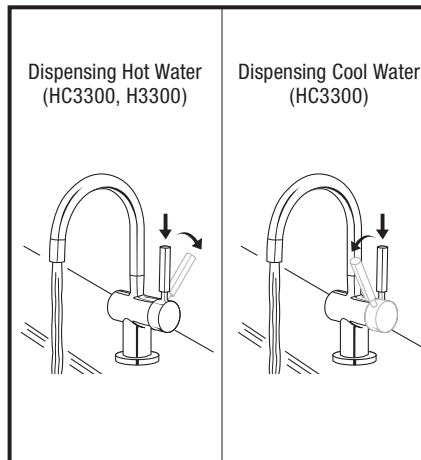


### WARNING

**Scalding Hazard:** The tap dispenses water up to 98°C, which can instantly cause scalds or burns. Use care when operating this appliance.

- ☐ Turn on the cold water supply.
- ☐ Depress the tap's **HOT** handle and hold it until water flows from the spout. Run the water for at least 3 minutes to flush lines (both the hot and cold handles on HC1100 independently).
- ☐ Check all connections to ensure they are tight and that there are no leaks.
- ☐ Plug in tank and ensure that green light on front of tank is illuminated.

**Note:** See box below for special instructions on operation of HC3300 and H3300 taps.



### WARNING

**Scalding Hazard:** The tap dispenses water up to 98°C, which can instantly cause scalds or burns. Use care when operating this appliance.

### Operating Instructions for HC3300 and H3300 taps

Featuring two-step hot side activation with automatic shut off and cool side two-step activation, which keeps the tap open when dispensing cool water.

- ☐ **HC3300:** To dispense instant hot water, first **press down** on the tap handle and then push the handle backward in the direction of the red indicator on the top of the handle. To dispense cool water, first **press down** on the tap handle and then pull the handle forward in the direction of the blue indicator on the handle.

Featuring two-step hot side activation with automatic shut off.

- ☐ **H3300:** To dispense instant hot water, first **press down** on the tap handle and then push the handle backward in the direction of the red indicator on the top of the handle.

**Water will be cold at first. Allow 12-15 minutes for water to reach target temperature. Gurgling or hissing is normal during the initial heating cycle.**

## CARE AND USE

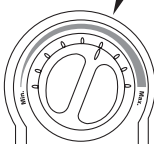
### ⚠ WARNING

**Electric Shock Hazard:** To prevent electrical shock, disconnect power before servicing unit. Use only a properly earthed (grounded) and polarized electric outlet.

### ADJUSTING THE THERMOSTAT

Factory temperature pre-set is 96°C. **To reset the thermostat to 96°C, turn the indicator one notch to the right of vertical.** After adjusting, depress the tap handle for 20 seconds for water to re-heat to the new setting.

approx. 96°C



- ☐ To adjust water temperature, turn thermostat dial on the front of the tank clockwise to increase temperature or turn anticlockwise to decrease temperature. Repeat if necessary. All changes should be minimal.

### ⚠ WARNING

**Scalding Hazard:** Do not allow water to boil. May result in severe burns.

### SEASONAL STORAGE/DRAINAGE

Anytime the steaming hot water tap is not used for extended periods of time, unplug and drain unit. If it is below freezing you will need to unplug the unit and drain it.

- ☐ Disconnect power from unit (unplug unit).
- ☐ Push hot water tap lever and allow water to flow until it is cool.
- ☐ Shut the cold water tap off at the valve.
- ☐ Disconnect tubes from the tank.
- ☐ Unhook tank from wall.
- ☐ Hold tank upside down and drain the water into the sink.
- ☐ Towel dry any water drippings from tank area.
- ☐ Reinstall tank to wall and reconnect tubes.
- ☐ Remove and discard filter cartridge, if applicable.
- ☐ To put back into working order, install new filter cartridge (if applicable) and turn on cold water supply at valve. Depress the hot water dispenser faucet lever and hold until water flows from the spout. Reconnect the electrical cord.

### CLEANING THE TAP AND TANK

- ☐ Only use mild cleaners to clean the tap and plastic components.
- ☐ Cleaners with acids, abrasives, alkaline, and organic solvents will result in deterioration of the plastic components and void the warranty.

### FILTER GUIDE AND REPLACEMENT

Replace filter cartridge when there is an obvious decrease in water flow to the tap or if there is an objectionable taste or odour to the water.

When the inlet and outlet ports have been closed and the filter's internal pressure has been relieved, water (about 60ml) will discharge from vent line.

If the new filter cartridge cannot be inserted, insert the old one and turn until it stops, remove it and then retry the new cartridge.

It is recommended that carbon filters be replaced every 6 months.

Filter replacement instructions:

- ☐ Replace with an InSinkErator® filter.
- ☐ Place pan or dish towel under the filter to catch water drainage during change.
- ☐ Slowly turn the cartridge anticlockwise completely until it stops (1/4 turn).
- ☐ Pull cartridge straight down and discard.
- ☐ Insert new cartridge into filter head.
- ☐ Top surface of cartridge will become flush with the bottom of the filter head when fully engaged.
- ☐ Turn the cartridge clockwise until it stops (1/4 turn).
- ☐ Align the in/out arrow on the head and bracket assembly to the in/out arrow on the cartridge.
- ☐ Open tap to expel trapped air.
- ☐ Run water for 3 minutes before usage.

### PROPERTY DAMAGE

- ☐ Regularly inspect the unit for any signs of leakage. If there are signs of water damage, immediately remove the unit from service.
- ☐ To avoid water damage from leakage, replace all cut, loose or split tubing.
- ☐ A drain pan, plumbed to an appropriate drain or outfitted with a leak detector, should be used in those applications where any leakage could cause property damage.

### ⚠ WARNING

**Electric Shock Hazard:** Using an ungrounded (no earth ground) or improperly connected appliance can result in serious injury or death from electrical shock.

**This appliance must be earthed (grounded).** This steaming hot water tap is equipped with a cord that has a grounding conductor and earth ground pin. The plug must be connected to an appropriate outlet that is properly installed and earthed (grounded) in accordance with all local codes and ordinances. Do not modify the plug provided with the appliance – if it will not fit the outlet, have a proper outlet installed by a qualified electrician. Check with a qualified electrician or tradesman if you are in doubt as to whether the steaming hot water tap is properly earthed (grounded).

### ⚠ CAUTION

**Personal Injury:** This tank is a non-pressurised tank. DO NOT modify this system. DO NOT close vent tube or connect other types of taps or valves to the tank. Use only the InSinkErator tap supplied. Use only parts provided. Contact an authorised InSinkErator Service agent for repairs or replacement components.

### ⚠ WARNING

**Fire Hazard:** To minimise possibility of fire, DO NOT store flammable items such as rags, paper or aerosol cans near the tank. DO NOT store or use petrol or other flammable vapours and liquids in the vicinity of this or any other appliance.

### CAUTION

**Property Damage:** To avoid water damage, replace any loose or split tubing. Periodically inspect the unit for any signs of leakage and immediately remove from service any unit suspected of leaking.

*A steaming hot water tap, like any water heater, has a limited life and will eventually fail. To avoid possible property damage and personal injury, this steaming hot water tap should be regularly examined for leakage and/or corrosion and replaced when necessary. A drain pan, plumbed to an appropriate drain or outfitted with a leak detector, should be used in those applications where any leakage could cause property damage. To check for corrosion, examine the appearance of the dispensed water in a clear glass once every three (3) months. If there is any discoloration or rusty appearance, unplug and drain unit as described in the Seasonal Storage/Drainage section on page 6 of this manual. If the water discoloration remains after draining and refilling unit, discontinue use and contact an authorized InSinkErator service agent.*

# WARRANTY INFORMATION

<b>Tap:</b>	<b>2-year warranty</b>
<b>SWT-FLTR (tank used with filter):</b>	<b>2-year warranty</b>
<b>SWT (tank used without filter):</b>	<b>1-year warranty</b>

This warranty is provided by InSinkErator, a division of Emerson Electric Co., ("InSinkErator" or "Manufacturer" or "we" or "our" or "us") to the original consumer owner of the InSinkErator product with which this warranty is provided (the "InSinkErator Product"), and any subsequent owner of the residence in which the Product was originally installed ("Customer" or "you" or "your").

InSinkErator warrants to Customer that your InSinkErator Product will be free from defects in materials and workmanship, subject to the exclusions described below, for the "Warranty Period", commencing on the later of: (a) the date your InSinkErator Product is originally installed, (b) the date of purchase, or (c) the date of manufacture as identified by your InSinkErator Product serial number. You will be required to show written documentation supporting (a) or (b). If you are unable to provide documentation supporting either (a) or (b), the Warranty Period commencement date will be determined by Manufacturer, in its sole and absolute discretion, based upon your InSinkErator Product serial number.

## What is Covered

This warranty covers defects in materials or workmanship, subject to the exclusions below, in InSinkErator Products used by a consumer Customer for residential use only, and includes all replacement parts and labor costs. YOUR SOLE AND EXCLUSIVE REMEDY UNDER THIS LIMITED WARRANTY SHALL BE LIMITED TO REPAIR OR REPLACEMENT OF THE INSINKERATOR PRODUCT.

## What is not Covered

This limited warranty does not extend to and expressly excludes:

- Losses or damages or the inability to operate your InSinkErator Product resulting from conditions beyond the Manufacturer's control including, without limitation, accident, alteration, misuse, abuse, neglect, negligence (other than Manufacturer's), failure to install, maintain, assemble, or mount the InSinkErator Product in accordance with Manufacturer's instructions or local electrical and plumbing codes.
- Wear and tear expected to occur during the normal course of use, including without limitation, cosmetic rust, scratches, dents or comparable and reasonably expected losses or damages.

In addition to the above exclusions, this warranty does not apply to InSinkErator Products installed in a commercial or industrial application.

## No Other Express Warranty Applies

This warranty is the sole and exclusive warranty provided to the Customer identified above. No other express warranty, written or verbal, applies. No employee, agent, dealer, or other person is authorized to alter this limited warranty or make any other warranty on behalf of Manufacturer. The terms of this warranty shall not be modified by the Manufacturer, the original owner, or their respective successors or assigns.

## What we will do to Correct Problems

If your InSinkErator Product does not operate in accordance with the documentation provided to you, or you have questions concerning your InSinkErator Product or how to determine when service is needed, please see attached Service Agency List.

The following information must be provided as part of your warranty claim: your name, address, phone number, your InSinkErator Product model and serial number, and if necessary, upon request, written confirmation of either: (a) the date shown on your installation receipt, or (b) the date shown on your purchase receipt.

Manufacturer or its authorized service representative will determine, in its sole and absolute discretion, if your InSinkErator Product is covered under this warranty. You will be given the contact information for your closest authorized InSinkErator Service Center. Please contact your InSinkErator Service Center directly to receive in home warranty repair or replacement service. Only an authorized InSinkErator service representative may provide warranty service. InSinkErator is not responsible for warranty claims arising from work performed on your InSinkErator Product by anyone other than an authorized InSinkErator service representative.

If a covered claim is made during the Warranty Period, Manufacturer will, through its authorized service representative, either repair or replace your InSinkErator Product. Cost of replacement parts or a new InSinkErator Product, and cost of labor for repair or installation of the replacement InSinkErator Product are provided at no cost to you. Repair or replacement shall be determined by Manufacturer or its authorized service representative in their sole discretion. All repair and replacement services will be provided to you at your home. If Manufacturer determines that your InSinkErator Product must be replaced rather than repaired, the warranty on the replacement InSinkErator Product will be limited to the unexpired term remaining in the original Warranty Period.

## Limitation of Liability

TO THE EXTENT PERMITTED BY LAW, IN NO EVENT SHALL MANUFACTURER OR ITS AUTHORIZED SERVICE REPRESENTATIVES BE LIABLE FOR ANY INCIDENTAL, SPECIAL, INDIRECT, OR CONSEQUENTIAL DAMAGES, INCLUDING ANY ECONOMIC LOSS, WHETHER RESULTING FROM NONPERFORMANCE, USE, MISUSE OR INABILITY TO USE THE INSINKERATOR PRODUCT OR THE MANUFACTURER'S OR ITS AUTHORIZED SERVICE REPRESENTATIVE'S NEGLIGENCE. MANUFACTURER SHALL NOT BE LIABLE FOR DAMAGES CAUSED BY DELAY IN PERFORMANCE AND IN NO EVENT, REGARDLESS OF THE FORM OF THE CLAIM OR CAUSE OF ACTION (WHETHER BASED IN CONTRACT, INFRINGEMENT, NEGLIGENCE, STRICT LIABILITY, OTHER SORT OR OTHERWISE), SHALL MANUFACTURER'S LIABILITY TO YOU EXCEED THE PRICE PAID BY THE ORIGINAL OWNER FOR THE INSINKERATOR PRODUCT.

The term "consequential damages" shall include, but not be limited to, loss of anticipated profits, business interruption, loss of use or revenue, cost of capital or loss or damage to property or equipment.



# TROUBLESHOOTING

PROBLEM	POSSIBLE CAUSE	WHAT TO DO
Water and steam spits forcefully from spout without turning on the tap.	<ul style="list-style-type: none"> <li>• Unit is boiling.</li> </ul> <i>May be normal during initial set-up.</i>	<ul style="list-style-type: none"> <li>• Depress tap lever to release some water from the tank.</li> <li>• Adjust water temperature using dial on tank front.</li> </ul> <i>Remember that at higher altitudes, water boils at lower temperatures.</i>
Water is not hot.	<ul style="list-style-type: none"> <li>• The unit may not be plugged in.</li> <li>• The electric outlet is inoperative.</li> </ul>	<ul style="list-style-type: none"> <li>• Make sure the unit is connected to a properly earthed (grounded) electric outlet.</li> <li>• Make sure the circuit breaker or fuses are functioning properly.</li> <li>• Check that the outlet is not switched off.</li> </ul>
LED green light on front of tank does not illuminate.	<ul style="list-style-type: none"> <li>• The unit may not be plugged in.</li> <li>• The electric outlet is inoperative.</li> </ul>	<ul style="list-style-type: none"> <li>• Make sure that the circuit breaker or fuses are functioning properly.</li> <li>• Check that the outlet is not switched off.</li> </ul>
Water is too hot or not hot enough.	<ul style="list-style-type: none"> <li>• Thermostat is not adjusted to your needs.</li> </ul>	<ul style="list-style-type: none"> <li>• Adjust the thermostat slowly, then depress or twist tap handle for 20 seconds to bring in fresh water to be heated at the new setting. Allow 5-7 minutes for water to reach new temperature.</li> </ul>
Water comes out of vent instead of spout	<ul style="list-style-type: none"> <li>• Outlet tube is blocked.</li> </ul>	<ul style="list-style-type: none"> <li>• Check that outlet tube is not kinked, twisted or pinched.</li> <li>• Unscrew spout end piece and clean out any debris.</li> </ul>
Water is dripping from the spout/vent intermittently.	<ul style="list-style-type: none"> <li>• The expansion chamber is not draining properly due to low water pressure.</li> <li>• The spout is blocked.</li> </ul>	<ul style="list-style-type: none"> <li>• Unplug the unit. If the dripping does not stop after a few minutes, check the supply valve to ensure it is fully open and there are no obstructions in the water line reducing the pressure below 172 kPa (1.7 bar; 25 psi). <i>i.e., a poorly mounted saddle valve, a clogged water filter, or a partially opened shut-off valve.</i></li> <li>• Unscrew spout end piece and clean out any debris.</li> </ul>
Water is dripping from the spout/vent constantly.	<ul style="list-style-type: none"> <li>• Debris in the water line may be in the tap valve seat causing a slow water leak.</li> </ul>	<ul style="list-style-type: none"> <li>• Unscrew spout end piece and clean out any debris.</li> <li>• Depress or twist lever 7-10 times to flush tap &amp; lines.</li> </ul>
Divided stream.	<ul style="list-style-type: none"> <li>• Debris in the end piece.</li> </ul>	<ul style="list-style-type: none"> <li>• Unscrew spout end piece and clean out any debris.</li> </ul>
Water discoloration/ rusty appearance.	<ul style="list-style-type: none"> <li>• Corrosion of unit.</li> </ul>	<ul style="list-style-type: none"> <li>• Unplug and drain as described in the Seasonal Storage/ Drainage Section on page 6 of this manual. If the water discoloration remains after draining and refilling unit, discontinue use and contact an authorised InSinkErator service agent.</li> </ul>

## FILTRATION ISSUES

Water taste or odour.	<ul style="list-style-type: none"> <li>• Filter water flow direction is wrong.</li> <li>• Filter needs to be flushed out.</li> <li>• Life of filter has expired.</li> </ul>	<ul style="list-style-type: none"> <li>• Review filter tube connection instructions.</li> <li>• Depress or twist the tap and run until the water is cold.</li> <li>• If there is no change, replace filter cartridge.</li> </ul>
New filter does not fit.	<ul style="list-style-type: none"> <li>• Head and bracket not fully rotated.</li> <li>• Filter O-ring breach.</li> </ul>	<ul style="list-style-type: none"> <li>• Take out the new filter, put in old filter.</li> <li>• Remove, inspect, reinstall filter cartridge.</li> </ul>
The filter leaks.	<ul style="list-style-type: none"> <li>• Head and bracket not fully rotated.</li> <li>• Filter O-ring breach.</li> </ul>	<ul style="list-style-type: none"> <li>• Test unit by reinstalling old filter and rotating to full stop. Check for leaks.</li> </ul>
No water flow or low water flow.	<ul style="list-style-type: none"> <li>• Life of filter has expired.</li> </ul>	<ul style="list-style-type: none"> <li>• Replace filter cartridge. <b>See page 6.</b></li> </ul>