

---

# **413L Top Mount Fridge**

## **MSBS548G**

## **MSBS548X**

---

V1.1 0426



# Welcome

**Residentia Group**

—

**Head Office**

165 Barkly Avenue  
Burnley, Victoria  
Australia 3121

—

**ACN**

600 546 656

—

**Online**

residentia.group  
www.mykin.house

—

**Postage**

PO Box 5177  
Burnley, Victoria  
Australia 3121

—

**Telephone**

1300 11 4357

Congratulations on purchasing your new Refrigerator. The Mykin brand is proudly distributed within Australia by Residentia Group Pty Ltd.

Please refer to the warranty card at the rear of this manual for information regarding your product's parts and labour warranty, or visit us online at: [www.residentia.group](http://www.residentia.group)

At Residentia Group, we are customer obsessed and our Support Team are there to ensure you get the most out of your appliance. Should you want to learn more about your new appliance, it's features or importantly taking care of the appliance, our Support Team are here to help.

You can use our online Support Centre at anytime by visiting:  
<http://support.residentiaigroup.com.au>

Or you can contact us via phone by dialing: 1300 11 HELP (4357).

It is important that you read through the following use and care manual thoroughly to familiarise yourself with the installation and operation requirements of your appliance to ensure optimum performance.

Again, thank you for choosing a Mykin appliance and we look forward to being of service to you.

Kind Regards,  
The Residentia Team

# Content

---

**PAGE 02**  
WELCOME

---

**PAGE 04**  
SAFETY WARNINGS

---

**PAGE 08**  
UNPACKING  
YOUR APPLIANCE

---

**PAGE 09**  
INSTALLATION  
INSTRUCTIONS

---

**PAGE 12**  
PRODUCT OVERVIEW

---

**PAGE 13**  
OPERATING  
INSTRUCTIONS

---

**PAGE 16**  
USAGE ADVICE

---

**PAGE 17**  
ENERGY SAVING TIPS

---

**PAGE 18**  
MAINTENANCE  
AND CLEANING

---

**PAGE 21**  
FAQS AND  
TROUBLESHOOTING

---

**PAGE 24**  
TECHNICAL  
SPECIFICATIONS

---

**PAGE 25**  
PURCHASE DETAILS

---

**PAGE 26**  
WARRANTY  
INFORMATION

# Safety Warnings

## IMPORTANT SAFETY INSTRUCTIONS READ CAREFULLY AND KEEP FOR FUTURE REFERENCE

Read this manual thoroughly before first use, even if you are familiar with this type of product. The safety precautions enclosed herein reduce the risk of fire, electric shock and injury when correctly adhered to. Make sure you understand all instructions and warnings.

Keep the manual in a safe place for future reference, along with the completed warranty card and purchase receipt. If you sell or transfer ownership of this product, pass on these instructions to the new owner.

Always follow basic safety precautions and accident prevention measures when using an electrical appliance, including the following:

**IMPORTANT:** Pay particular attention to messages that contain the words **DANGER, WARNING** or **CAUTION**. These words are used to alert you to a potential hazard that can seriously injure you and others. The instructions will tell you how to reduce the chance of injury and let you know what can happen if the instructions are not followed.



This symbol alerts you to take care as this appliance contains a flammable refrigerant (isobutane) and insulation blowing gas (cyclopentane). Do not expose it to high heat, sparks and open flames.

The refrigerant isobutane (R600a) is contained within the refrigerant circuit of the appliance, a gas with a high level of environmental compatibility, which is nevertheless flammable. During transportation and installation of the appliance, ensure that none of the components of the refrigerant circuit become damaged.

**WARNING: Do not damage the refrigerant circuit! Never use an appliance with a damaged refrigerant circuit!** If the refrigerant circuit becomes damaged, avoid proximity to open fires and all types of heat and ignition sources. Thoroughly ventilate the room in which the appliance is located.

**DANGER:** It is hazardous for anyone other than an authorised service person to service this appliance. In Queensland, the authorised service person MUST hold a Gas Work Authorisation for hydrocarbon refrigerants to carry out servicing or repairs which involve the removal of covers.

The room for installing the appliance must be at least 1m<sup>3</sup> per 8g of refrigerant. The amount and type of refrigerant in the appliance can be found in the Technical Specifications on page 24 and on the rating plate, found on the appliance.

**DANGER:** If there is a gas leak (or leakage of other flammable gases), immediately turn off the valve of the leaking gas and open doors and windows.

**DANGER:** Crucially, do not unplug the refrigerator (or any other electrical appliance) during a gas leak, as a spark could cause a fire or explosion.

**Explosive or flammable substances:** Do not store explosive substances such as aerosol cans with a flammable propellant in this appliance. Do not store or use petrol or any other flammable vapours and liquids in the vicinity of this or any other appliance. Do not use such substances for cleaning the appliance. The fumes can create a fire hazard or an explosion.

# Safety Warnings (Continued)

## Usage Conditions and Restrictions

- **Domestic use only:** This appliance is intended for indoor household use only. It is not intended for commercial, industrial or outdoor use. It is not intended for use in a recreational vehicle.
- **Purpose:** Do not use this appliance for anything other than its intended purpose. Other uses are not recommended and may cause fire, electric shock or personal injury.
- **Attachments:** The use of attachments is not recommended by the appliance manufacturer and distributor as they may be hazardous.
- **Improper use:** Damage due to improper use, or repairs made by unqualified personnel will void your warranty. We assume no liability for any eventual damages caused by misuse of the product or non-compliance with these instructions.
- **WARNING:** Do not use mechanical devices or other means to accelerate the defrosting process, other than those recommended by the manufacturer.
- **Usage restriction:** This appliance is not intended for use by persons (including children) with reduced physical, sensory or mental capabilities, or lack of experience and knowledge, unless they have been given supervision or instructions concerning use of the appliance by a person responsible for their safety.
- **Children:** Supervise young children to ensure they do not play with the appliance. Never allow children to operate, play with or crawl inside or on top of the appliance.
- **WARNING:** Do not use electrical appliances inside or on top the appliance, unless they are of the type recommended by the manufacturer.
- **Damage:** Do not use the appliance if the power cord, plug or the appliance itself is damaged. If the cord is damaged, contact the after sales support line and have the cord replaced by qualified personnel in order to avoid a hazard.
- **WARNING:** Do not damage the refrigerant circuit.
- **Do not modify:** Do not attempt to alter or modify this appliance in any way.
- **Repair:** Do not attempt to repair or replace any part of this appliance unless it is specifically recommended in this manual. All other servicing should be referred to a qualified technician. Contact the after sales support line for advice.
- **Objects:** Do not place heavy objects on the top of the refrigerator as objects may fall when the door is opened or closed, and accidental injuries might be caused.
- **Using:** The gaps between refrigerator doors and between doors and refrigerator body are small. Do not put your hand in these areas. Please be gentle when closing the refrigerator door to avoid falling articles. Do not pick up frozen items with wet hands in the freezing chamber when the refrigerator is running, especially metal containers in order to avoid frostbite.
- **WARNING:** Do not locate multiple portable socket-outlets or portable power supplies at the rear of the appliance
- **CAUTION:** Do not touch frozen food or freezer walls with wet hands as this may cause frostbite or skin injury.
- **No Medical/Biological Storage:** The refrigerator is strictly for household food storage. It must not be used to store blood, drugs, biological products, or similar sensitive items.
- Do not store beer, beverages, or other fluids in bottles or enclosed containers in the freezing chamber, as they may crack or explode when frozen.
- **Corrosive Items:** Do not store corrosive items inside the fridge.
- Opening the door for long periods increases the temperature inside the compartments.
- Raw meat and fish must be stored in suitable containers so they do not come into contact with, or drip onto, other food.
- Clean water tanks if they haven't been used for 48 hours. If connected to a water supply, flush the system if water hasn't been drawn for 5 days.
- Regularly clean surfaces that come into contact with food, and accessible drainage systems.
- If the fridge is left empty for long periods, you must switch it off, defrost, clean, dry, and leave the door open to prevent mould.
- 2-Star Compartments are only suitable for storing pre-frozen food, storing/making ice cream, and making ice cubes.

## Safety Warnings (Continued)

### Electrical Safety

- **Voltage:** Before connecting and turning on the appliance, ensure the electrical voltage and circuit frequency correspond to that indicated on the appliance rating label.
- **Earthing:** This appliance should be properly earthed for your safety. The power cord of this appliance is equipped with a three-prong plug for use in standard wall outlets to minimise the possibility of electrical shock. Do not modify the cord and/or plug provided with the appliance. Improper use of the earthed plug can result in the risk of electric shock.
- **Connection:** This appliance requires a standard 220-240 V AC 50Hz electrical outlet. Do not overload the electrical circuit.
- **Power socket:** Please use a dedicated power socket and do not share the power socket with any other electrical appliances. The power plug should be firmly connected to the socket or else fires might be caused.
- **Power cord:** Do not kink or damage the power cord; do not leave it exposed or dangling. Secure it at the back of the appliance so no one steps on or places anything on the cord or against it. Keep the cord out of reach of children. When moving the appliance, make sure not to damage the power cord. Do not pull the power chord when pulling out the plug, firmly grasp and pull it out from the socket directly.
- **WARNING:** When positioning the appliance, ensure the supply cord is not trapped or damaged.
- **Power Failure:** Please pull out the plug if there is a power failure. Do not connect the refrigerator back to the power supply for the next five minutes to prevent damages to the compressor due to successive starts.
- **Auxiliary Items:** Do not use an inverter, adaptor or extension cord with this appliance. If the cord is too short, have a qualified electrician install an outlet near the appliance. Use of an extension cord and an inverter can negatively affect the performance of the unit.
- **Protect from moisture:** To protect against the risk of electric shock, do not immerse the unit, cord or plug in water or spray it with any other liquid. Do not connect or disconnect the electric plug when your hands are wet. Turn the power switch off before removing the plug from the socket.
- **WARNING: Disconnect!** To reduce the risk of fire, electric shock or personal injury, always unplug the appliance from the socket when not in use, when moving and before cleaning or servicing. Never unplug the unit by pulling the power cord. Always grip the plug firmly and pull straight out from the power point.
- **Electrical work:** Any electrical work required for the installation of this appliance should be carried out by a qualified electrician.
- **Note:** Use of a surge protector is recommended in areas with unstable power supply.

**Never use this appliance with a damaged refrigerant circuit!** If the coolant circuit becomes damaged, avoid proximity to open fires and all types of heat sources. The room in which the appliance is located should be ventilated for a few minutes.

# Safety Warnings (Continued)

## Installation

**Heavy:** This appliance is heavy, take care when moving it.

To avoid back or other injury, consider a two person lift or mechanical aid when installing it. Failure to do so can result in back or other injury.

**Damage:** When unpacking, check the appliance carefully for damage. If it is damaged, do not install the appliance. Contact our after sales support centre on 1300 11 4357 for advice on examination or return of the damaged appliance.

**Protect from moisture:** Install the appliance in an indoor area protected from wind, rain, water spray or drips.

**Protect from heat:** Do not install the appliance next to an oven, grill or other source of high heat, or where it will be exposed to direct sunlight for prolonged periods of time.

**WARNING: Ventilation:** To ensure proper ventilation, keep any ventilation openings, in the appliance enclosure or in the built-in structure, clear of obstructions. Ensure adequate air circulation around the appliance to prevent overheating.

**Level:** Install the appliance level in order to ensure proper operation.

**WARNING: Tipping Hazard:** This appliance is heavy and may tip over. Use two or more people to move and install the appliance. To avoid tipping hazards due to instability, the appliance must be fixed in accordance with the instructions.

**WARNING: Ventilation:** Do not block ventilation openings. Insufficient airflow may cause overheating and not cooling.

**Freestanding Use:** The appliance is specifically noted as a freestanding unit and is not intended to be used as a built-in appliance.

**Accessory Installation:** The fridge must be completely disconnected from power before attempting to install any accessories.

## Cleaning and Maintenance

**Disconnect:** Unplug the appliance before cleaning or servicing. Failure to do so can result in electric shock, injury or death. Do not connect or disconnect the plug when your hands are wet.

**Flames:** Do not let open flames or ignition sources enter the appliance.

**Flammable/explosive substances:** Never clean this appliance with flammable fluids. Do not store or use volatile, flammable or explosive propellants or liquids in or close to this or any other appliance. The fumes can create a fire hazard or explosion.

**Solvents:** Do not use solvent based cleaning agents or abrasives on the interior as these may damage or discolour the surfaces of the appliances.

**WARNING!** Do not use mechanical devices or other means to accelerate the defrosting process. Never use a sharp or metal instrument to remove frost or clean the appliance. Use a plastic scraper, if necessary.

**Service:** Do not attempt to repair, modify or replace any part of the appliance unless specifically recommended in this manual. Refer all other servicing to a qualified technician, or contact the after sales support line for advice on examination or repair of the appliance.

## Responsible disposal

**Note:** At the end of its working life, do not throw this appliance out with your household rubbish. Electrical and electronic products contain substances that can have a detrimental effect on the environment and human health if disposed of inappropriately. Observe any local regulations regarding the disposal of electrical consumer goods and dispose of it appropriately for recycling and recovery of the refrigerant and blowing agent. Contact your municipal authorities for advice on recycling facilities in your area.

**WARNING!** This refrigeration appliance contains flammable refrigerants and insulation blowing gases, which must be removed before disposal. Contact your municipal authorities for any codes or regulations concerning the disposal of such materials.

**Note:** Before throwing away an old fridge or freezer, you must take off the doors and leave the shelves in place so children cannot easily climb inside and suffocate.

# Unpacking Your Appliance

## Getting Started

- **Packaging materials:** This appliance has been packaged to protect it against transportation damage. Remove all packaging materials, bottom cushions, foam pads and tapes from around and inside the appliance, tear off the protective film on the doors and refrigerator. Keep the original packaging carton and materials in a safe place. It will help prevent any damage if the product needs to be transported in the future, and you can use it to store the appliance when it is not in use. In the event the carton is to be disposed of, please recycle all packaging materials where possible.
- **Suffocation:** Plastic wrapping can be a suffocation hazard for babies and young children, so ensure all packaging materials are out of their reach and disposed of safely.
- **Power cord:** Unwind the power cord to its full length and inspect it for damage. Do not use the appliance if it or its cord have been damaged or are not working properly. In case of damage, contact our after sales support line for advice on examination, repair or return of the damaged product.
- **Read the manual:** Read this manual to familiarise yourself with the appliance. Pay particular attention to the safety instructions on the previous pages.
- **Clean:** To remove any dust from transit and storage, clean the interior and exterior surfaces of the appliance with lukewarm water and a soft cloth. Dry thoroughly.

**Important:** Do not use harsh or abrasive detergents or powders as these will damage the finish.

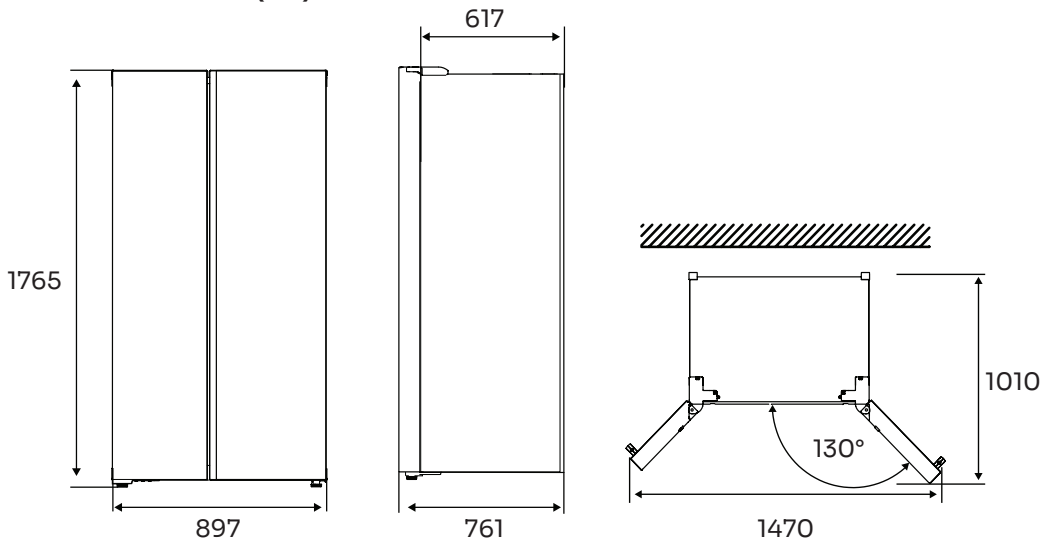
# Installation Instructions

- **Two person installation:** Use two or more people to move and install the appliance. Failure to do so can result in back or other injury.
- **Freestanding design:** This refrigerator is designed for freestanding installation only and must not be built into cabinetry. Installing this unit as a built-in appliance will restrict airflow, leading to reduced cooling performance and a shorter lifespan, and will void the manufacturer's warranty.
- **Floor surface:** This appliance must be properly positioned on a dry, sturdy, level surface that is strong enough to support it when it is fully loaded.
- **Clearances:** Ensure that air can circulate freely around the back of the cabinet, which is necessary to cool the compressor and condenser. Allow at least 10cm clear space at the back, 10cm at the sides of the unit and 30cm between the top and any surface above (i.e. a bench top). If you are installing your refrigerator next to a fixed wall, leave sufficient space on the hinge side to allow for the door to swing open.

**DO NOT** install/use the appliance in the following locations/situations:

- In moist areas or areas of high humidity.
- In a recreational vehicle, or for use with an inverter.
- In direct sunlight, near heat sources, next to an open flame, cooking or heating appliance, or near any other source of high heat.
- Direct sunlight may affect the acrylic coating and heat sources may increase the unit's power consumption. For best energy efficiency install the appliance in the coolest area of the room.
- In an area with extreme cold ambient temperatures.
- In an area with excessive moisture and high humidity. Make sure it is protected from elements such as wind, rain, water spray or drips.
- In an area where petrol or other explosive and/or flammable liquids or fumes are used or stored. The fumes can create a fire hazard or explosion.

## Product Dimensions (mm)



# Installation Instructions (Continued)

## Electrical connection

- **WARNING!** It must be possible to disconnect the appliance from the mains power supply; the plug must therefore be easily accessible after installation.
- Before plugging in your new fridge, let it stand upright for at least **2 hours**. This will allow the refrigerant gases to settle into the compressor and reduce the possibility of a malfunction in the cooling system.
- The appliance must be earthed. The plug of the power supply cord is equipped with a contact for this purpose. Do not under any circumstances cut or remove the third (earth) prong from the power cord.  
If the plug does not fit your outlet, consult a licensed electrician for advice to have the outlet changed.
- Plug the unit into a dedicated, properly earthed wall outlet. Ensure that your outlet voltage and circuit frequency correspond to the voltage stated on the rating label.
- Secure the fridge's supply cord behind the unit. Do not leave it exposed or dangling to prevent injury and accidental disconnection from the power supply.
- Adjust the temperature control as described below.
- When first starting up, and after a period out of use, allow the unit to cool down for at least **24 hours** before placing food in the fridge.

## Ambient Temperature

Depending on the climate class, this refrigerator is intended to be used at an ambient temperature range as specified in the following table.

The product may not operate properly at temperatures outside of the specific range. You can find the climate class on the product rating label.

Climate Class	Ambient Temperature
SN	+10 °C to +32 °C
N	+16 °C to +32 °C
ST	+16 °C to +38 °C
T	+16 °C to +43 °C

If you have any doubts regarding installation, please turn to the vendor, to our customer service or to the nearest Authorised Service Centre.

**IMPORTANT:** The cooling performance and power consumption of the refrigerator may be affected by the ambient temperature, the door-opening frequency, and the location of the refrigerator. We recommend adjusting the temperature settings as appropriate.

# Installation Instructions (Continued)

## Levelling the Fridge

Precautions before levelling the fridge:

- Ensure that the fridge is disconnected from the power source
- Make precautions to prevent any personal injury.

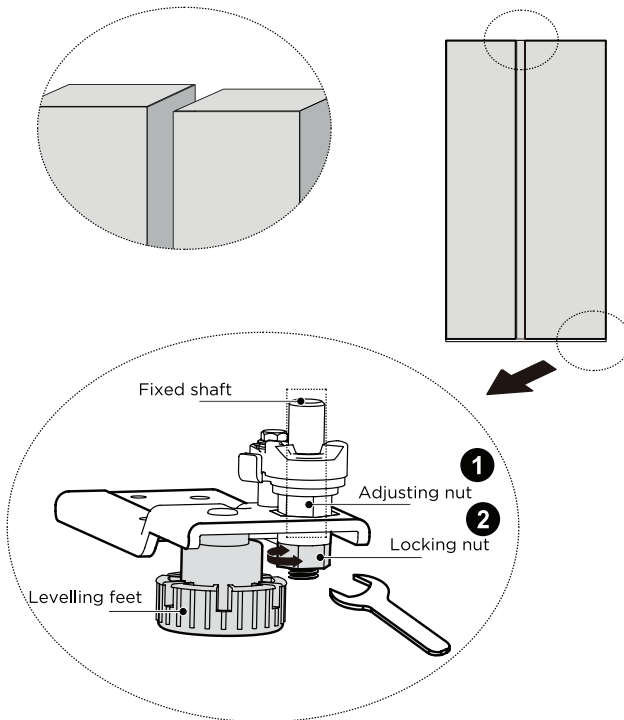
To avoid vibration, the appliance must be levelled.

- If required, adjust the levelling feet to compensate for any uneven floor.
- The front should be slightly higher than the rear to aid in door closing.
- Levelling feet can be turned easily by tipping the cabinet slightly.
- Turn the levelling feet counter clockwise (↶) to raise the unit, clockwise (↷) to lower it.

## Levelling the Doors

If the doors are not at the same height, the door can be adjusted with a spanner.

- Loosen locking nut (2) counterclockwise.
- Rotate the adjusting nut counterclockwise (1) to adjust the height of door.
- When the door is correctly aligned, tighten the locking nut (2) clockwise.

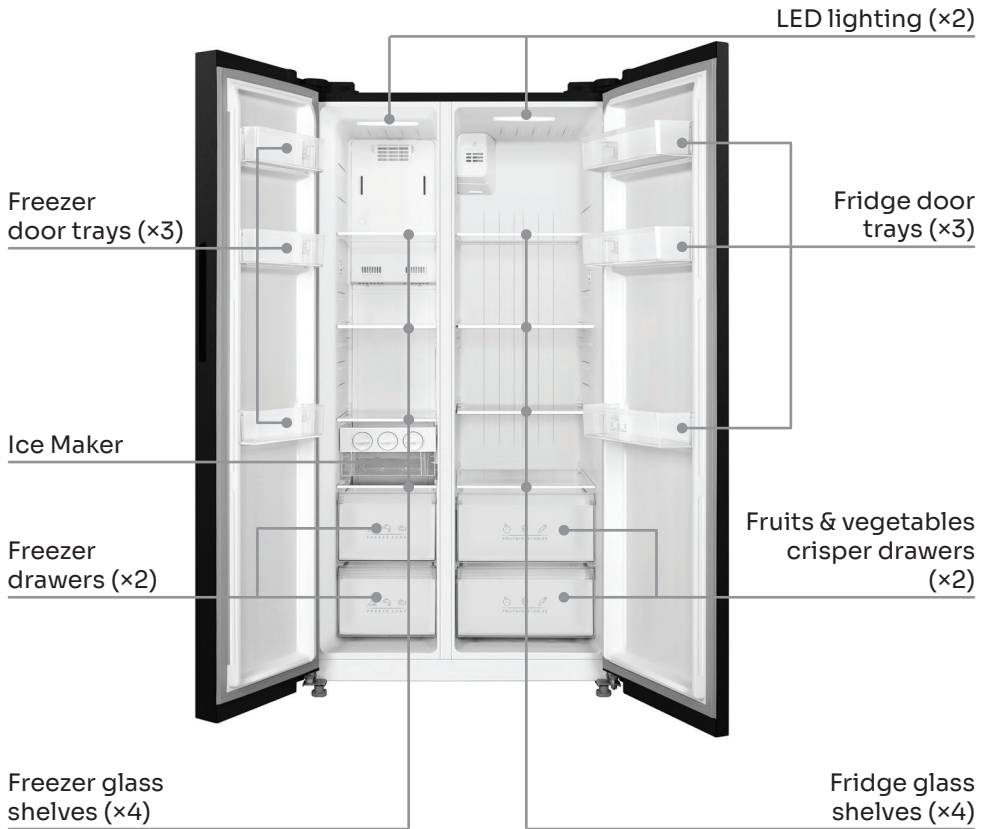


### Note:

The images and diagrams in this user manual are for explanatory purposes only. Your appliance may appear differently.

# Product Overview

## Your Side by Side Refrigerator



### Included Accessories not displayed:

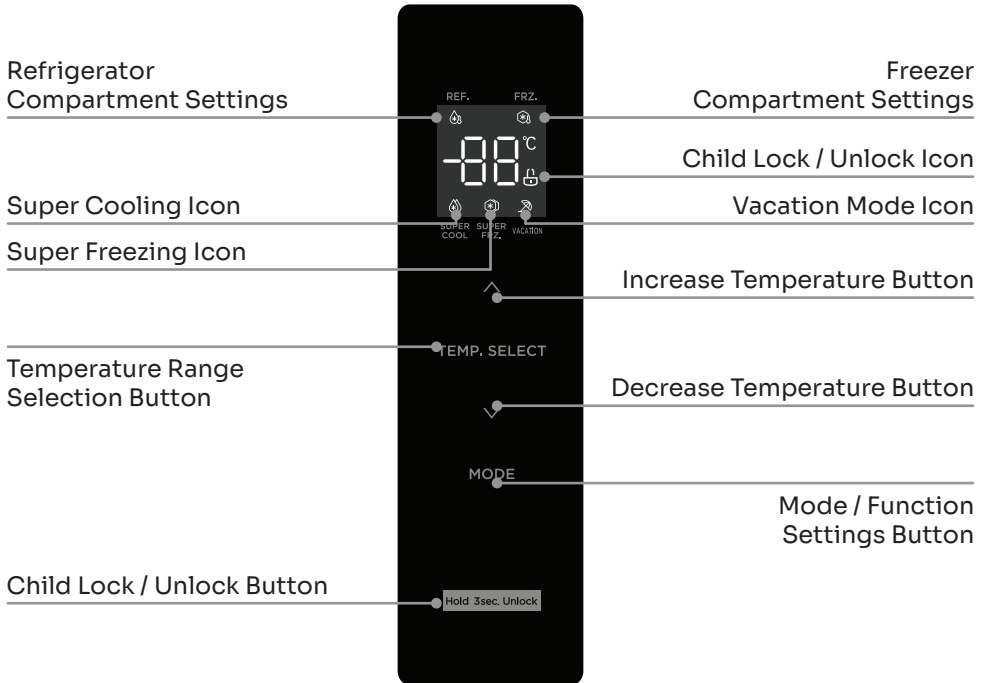
- Egg Trays (x2)

### Note:

The images and diagrams in this user manual are for explanatory purposes only. Your appliance may appear differently.

# Operating Instructions

## The Control Panel



**Attention:** Due to ongoing technical improvements and model variations, some manual illustrations may not perfectly match your appliance.

# Operating Instructions (Continued)

## Using the Control Panel

### Locking and Unlocking

To prevent accidental changes, the fridge control panel will automatically lock after 30 seconds of inactivity.

- **To unlock:** Press and hold the “Hold 3sec. Unlock” button for 3 seconds. The unlock icon (🔓) will appear on the display.
- **To lock:** When unlocked, press and hold the same button for 3 seconds until the locked icon is displayed (🔒).

**Note:** The functions below can only be adjusted when the panel is unlocked.

### Setting the Mode

Press the “MODE” button to cycle through the special functions in this order:  
Super Cooling › Super Freezing › Super Cooling / Super Freezing (both on) ›  
Vacation Mode › None.

- **Super Cooling:** Rapidly drops the fridge temperature to 2°C to quickly cool down drinks or fresh groceries. It turns off automatically after 6 hours, or you can cancel it manually by pressing the key. It will then return to your previous temperature setting.
- **Super Freezing:** Drops the freezer to -24°C. Turn this on before doing a big grocery shop so the freezer is ready to rapidly freeze fresh food, locking in nutrients. It turns off automatically after 24 hours, or you can cancel it manually.

**Tip:** This function is designed to freeze food as quickly as possible to lock in nutritional value. If you are freezing a large amount of food at once, it is highly recommended to turn this on before putting the food in.

- **Vacation (Holiday) Mode:** Perfect for when you’re away. The fridge section turns off completely to save energy, while the freezer stays running at -18°C.

## Adjusting the Temperature

1. Press “TEMP.SELECT” to choose either the fridge (🌡️) or the freezer compartment (❄️).
2. Use the Up (⤴) and Down (⤵) buttons to change the temperature by 1 degree at a time.
  - Fridge range: 2°C to 8°C (Recommended: 4°C)
  - Freezer range: -24°C to -16°C (Recommended: -18°C)

**Note:** During high ambient temperatures (such as hot summer days) it may be necessary to set the thermostat to the coolest setting. This may cause the compressor to run continuously in order to maintain a low temperature.

**Important:** Your new temperature setting will only take effect after the panel locks again. If you try to adjust past the maximum or minimum temperature, the fridge will beep to let you know it’s an invalid key press.

# Operating Instructions (Continued)

## Alarms and Features

- **Door Opening Prompt Tone:** By default, the fridge plays a chime when you open the door. To turn this on or off, press and hold both the Up ( ^ ) and Down ( v ) buttons for 3 seconds.
- **Door Alarm:** If the door is left open for more than 120 seconds, an alarm will sound to prevent your food from spoiling. Close the door, or tap any key on the display panel to silence the alarm.
- **Power Outages:** In the event of a power failure, the fridge will lock in its current working state and maintain those exact settings once power is restored.

## Using the Ice Maker

1. Gently pull out the ice tray and fill it with water exactly to the Water Level Line. Do not overfill!
2. Carefully replace the tray horizontally so it doesn't spill.
3. Once the ice is ready, turn the front knobs clockwise to the end and release.  
The cubes will drop into the ice box below.

## Tips:

- To make ice faster, set the freezer to its lowest temperature or use Super Freezing mode.
- If you overfill the tray, or if you turn the knob before the ice is fully solid, water will trickle down into the ice box and freeze all your stored ice cubes into one giant block.

# Usage Advice

## Important First-Use Warning:

Loading too much food into the fridge immediately after turning it on for the very first time can negatively affect how well it freezes.

## The Fridge Compartment

This compartment helps keep for food for short-term storage and is suitable for storing a variety of fruits, vegetables, beverages and other food items ideally between 3 to 5 days.

- **Managing Moisture:** Never put uncovered liquids in the fridge. Frost naturally concentrates on the coolest parts of the evaporator; uncovered liquids speed this up and mean you'll have to manually defrost the fridge more often.
- **Air Circulation:** Let warm foods cool to room temperature before putting them in. Ensure food and containers do not touch the back wall of the fridge, as they can freeze to it. Try to avoid opening the door too frequently.
- **Meats & Fresh Produce:** Store clean meat and fish wrapped tightly (in foil or packaging) and use within 1-2 days. Unpackaged fruit and veg should go in the designated crisper drawers.

## The Freezer Compartment

This low temperature helps keep food for long-term storage and is suitable for storing frozen food and making ice.

- **Freezing Fresh Food:** Keep fresh, unfrozen food away from already-frozen food to prevent the frozen items from partially thawing. When freezing large batches of meat or fish, divide them into smaller portions first so they freeze quickly and are easy to grab.
- **Storage:** Always follow the manufacturer's recommended storage times. If there is no info on the packaging, do not store it for more than three months.
- **Packaging:** Ensure store-bought frozen food hasn't been damaged and was stored at the right temperature. Use suitable individual packaging at home to prevent cross-contamination.
- **Defrosting:** To safely defrost, move food to the fridge. If using a microwave, only remove the exact portion you need and immediately seal the rest of the pack to prevent "freezer burn" and excess ice forming on the leftovers. Never refreeze thawed food.
- **Power Failures:** If the appliance breaks down or loses power for a long time, take out the frozen food, check if it is still edible, and move it to an esky or another freezer.

## Recommended Maximum Storage Times (at -18°C or colder)

**Note:** Storing food for too long or at the wrong temperature causes quality loss, spoilage, and food poisoning.

- 2 to 6 months: Stew, ice cream, sausages, bread.
- 4 to 8 months: Fish, prawns, lamb, meat.
- 6 to 12 months: Poultry, beef, fruit, vegetables.

**IMPORTANT:** Once the unit has started, continuous operation is recommended. Please try and avoid turning the unit off and on as this may affect the service life.

## Storage tips:

- Wait until hot food has cooled to room temperature before placing into the refrigerator.
- For food safety, we recommend sealing up any food before placing into the refrigerator.
- For quicker freezing and easy access, divide your meat and large items into smaller

## Energy Saving Tips

- Do not place the appliance near cookers, radiators or other heat sources. If the ambient temperature is high, the compressor will run more frequently and for longer, resulting in increased energy consumption.
- Ensure that there is sufficient ventilation at the base of the appliance, on the sides of the appliance and at the back of the appliance.
- Please also observe the clearances and product dimensions in the Installation section of this user manual.
- The arrangement of drawers, shelves and trays as shown in the product overview offers the most efficient use of energy and should be retained as far as possible.
- To obtain a larger storage space (e.g. for large refrigerated/frozen goods), the middle drawers and shelves can be removed. The top and bottom drawers and shelves should be removed last if necessary.
- An evenly filled refrigerator/freezer compartment contributes to optimal energy use.
- Allow warm food to cool before placing it in the refrigerator/freezer compartment. Food that has already cooled down increases energy efficiency.
- Allow frozen food to defrost in the refrigeration compartment. The coldness of the frozen food reduces the energy consumption in the refrigerator compartment and thus increases the energy efficiency.
- Open the door only as briefly as necessary to minimise cold loss. Opening the door briefly and closing it properly reduces energy consumption.
- Setting the temperature no colder than necessary contributes to optimal energy use.
- The door gaskets of your appliance must be perfectly intact so that the doors close properly and energy consumption is not increased unnecessarily.
- For the most efficient use of energy, please keep the all internal items such as trays, drawers, shelves and ice cube box on the position supplied by manufacturer.
- Storage of too many items during operation after the initial connection of your appliance to power may adversely affect the freezing effect of the refrigerator.
- Do not block the air outlet or the freezing effect of the refrigerator will also be adversely affected.

# Maintenance and Cleaning

## Important Cautions

**WARNING:** Before cleaning the appliance, make sure it is switched off and disconnected from the power supply. Failure to do so can result in electric shock or injury.

- **Power off:** Always unplug the fridge from the wall before doing any cleaning or maintenance. Grip the plug itself—never pull the cord.
- **Wait before restarting:** After unplugging, wait at least 5 minutes before turning the power back on to protect the compressor from damage.
- **Keep it running:** Once your fridge is set up, it's best to let it run continuously. Frequent interruptions to its operation can shorten the appliance's lifespan.
- **Electrical risk:** Never rinse the fridge directly with water or other liquids. This can cause short circuits and ruin the electrical insulation.
- **Dusting the back:** At least once a year, clear the dust off the back of the unit. This prevents fire hazards and stops the fridge from burning excess energy.

## Cleaning the Interior and Exterior

### WARNING

Never clean the unit with an abrasive, acid, oil or solvent based cleaning agent. Never use flammable fluids or sprays for cleaning as the fumes from these substances can create a fire hazard or Explosion.

- **The Inside:** Clean the interior regularly to stop bad smells. Use a soft cloth or sponge dampened with a mixture of 2 tablespoons of baking soda and 1 litre of warm water. Wipe it down, rinse with a clean damp cloth, and wipe dry. Leave the door open to let it air dry completely before turning the power back on.
- **Tight spots:** For hard-to-reach areas like narrow gaps or corners, use a soft rag, a small soft brush, or thin sticks (like cotton swabs) to clean out any grime and prevent bacteria from building up.
- **The Outside & Door Seals:** Wipe the exterior and the rubber door seals with a soft cloth dampened with mild soapy water or diluted detergent. Wipe completely dry. Check the seals regularly to ensure no crumbs or debris are trapped.

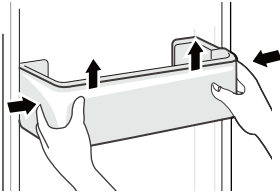
### WARNING: Do not use when cleaning

- **Inside the fridge:** Do not use soap, standard detergents, scrubbing powders, or spray cleaners inside the cabinet. These can leave behind odours that contaminate your food.
- **Anywhere on the fridge:** Never use hard brushes, steel wool, wire brushes, abrasive cleaners (like toothpaste), organic solvents (like alcohol, acetone, or banana oil), boiling water, or acidic/alkaline products. These will permanently scratch, deform, or melt the plastic and surface finishes.

## Maintenance and Cleaning (Continued)

### Cleaning the door trays

According to the direction arrow in the figure below, use both hands to squeeze the tray, and push it upward, then you can take it out.

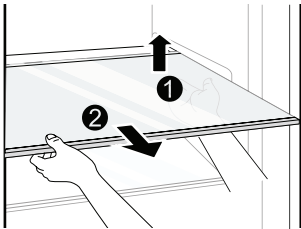


After washing the tray having been taken out, you can adjust its installing height in accordance with your requirement.

### Cleaning the glass shelves

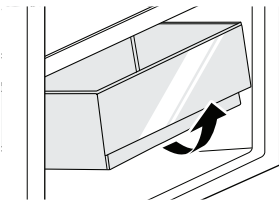
As the innermost part of the refrigerator liner where contacting the shelves has a backstop, you shall raise the shelves upward, then you can be able to take it out.

Adjust or clean the shelves according to your requirement.



### Cleaning the drawers

Empty the drawer first. Grab the handle, pull it out completely until it hits the stopper. Next, lift the front upwards and pull it entirely free.



## Maintenance and Cleaning (Continued)

### **Changing the LED Lights**

Any replacement or maintenance of the LED lamps must be made by the manufacturer, its service agents or a similar qualified technician. Please contact the after sales support line on 1300 11 HELP (4357) if your lights need replacing.

This product contains two light sources of energy efficiency glass (G).

### **Moving the appliance**

Before moving the refrigerator, take out all objects, fix the glass shelves and drawers with tape, tighten the levelling feet, close the doors and fix them with tape. During the move, do not lay the appliance upside down or horizontally. Avoid vibrations and do not incline the appliances no more than 45°.

# FAQs and Troubleshooting

## Fault Indication

The following warnings may appear on the control panel display indicating the corresponding faults of your appliance. Though the refrigerator may still be in operation with a fault, we highly recommend our after sales support line on 1300 11 HELP (4357) for maintenance to optimise the performance of your appliance.

Fault Code	Fault Description
E1	Refrigerator temperature sensor fault
E2	Freezer temperature sensor fault
E5	Freezing defrost sensor fault
E6	Communication error
E7	Ambient temperature fault

## Troubleshooting

Before contacting our after sales support line, please check the troubleshooting table below to see if you are able to solve the problem yourself.

Problem	Possible Cause	Possible Solution
The appliance does not operate.	The power supply is not turned on, or the plug is loose. Low voltage, power failure, or a tripped circuit.	Insert the power cord firmly into the power point. Check the power supply at your home/switchboard.
Light is not working	The appliance is not powered on. The light globe is broken.	Unplug and re-plug the power cord. If the light remains off, please contact after-sales support.
Fridge/freezer is over-cooling	The temperature control is set too low.	Adjust the settings to a higher temperature.
Compressor is working for a long time	High ambient room temperature (summer). Putting too much food in at once. Putting warm food in before it has cooled down. Opening the door too often. The frost layer inside is too thick.	Longer operation in hot weather is normal. Do not overload the fridge. Wait until food has cooled before storing. Reduce how often you open the doors. Defrost the appliance if the ice is thick.
Door does not close properly	Something is physically blocking the door. Too much food inside. The appliance is not level. The rubber door seal (gasket) is deformed.	Rearrange or remove excess food. Adjust the feet so the fridge sits completely level. Heat the rubber seal gently (with a hair dryer or warm water) to restore its shape, then let it cool.

## FAQs and Troubleshooting (Continued)

<b>Problem</b>	<b>Possible Cause</b>	<b>Possible Solution</b>
Outer wall is hot	Heat is deliberately dissipated to the outside through metal tubes inside the cabinet walls. High summer temperatures can also cause the outer wall temperature to rise.	This is normal. Ensure there is enough ventilation space around the appliance, or move it to a cooler location.
Cross or vertical beams are hot	There are metal tubes inside the beams that release heat to prevent condensation from forming.	This is normal.
Odours	Spoiled food. Strong-smelling food left uncovered. The interior compartment is dirty.	Clean out any spoiled food. Ensure strong-smelling food is wrapped airtight. Give the interior compartment a thorough clean.
The actual temperature differs from the set temperature	Putting warm food in causes a temporary temperature rise. It takes time to reach a new temperature setting. Temperatures naturally vary by about $\pm 3^{\circ}\text{C}$ depending on the location inside the compartment.	This is normal. Give the appliance some time to stabilize before testing the actual temperature again.
Condensation forms on the outside	Room humidity is high.	This is normal. Simply wipe off the condensation with a dry cloth.
Condensation forms inside the fridge and drawers	The fridge naturally maintains high humidity to keep vegetables fresh. High room humidity combined with frequent door opening. The door seal is not tight.	Wipe off with a dry cloth. Avoid keeping the doors open too long. Check the door seal and clean or adjust it if necessary.
Frost around the vents	The door is not closed properly. The door seal is not tight.	Make sure no food is blocking the door from closing. Check, clean, or adjust the door seal.
Hard to open the door	The difference in air pressure between the inside and outside of the compartment can sometimes create a vacuum, making the freezer door hard to pull open.	Wait a few moments after closing it, then try to open the door slowly.

# FAQs and Troubleshooting (Continued)

## Understanding Fridge Sounds

Certain sounds can be heard during normal use of the refrigerator. These do not affect its correct operation.

### Sounds you can easily prevent:

- **Rattling or vibrating:** Caused by the appliance not sitting level. Adjust the position using the front feet. If resting on tiles, place soft pads under the rear rollers.
- **Buzzing:** The fridge is touching adjacent furniture or cabinets. Move the refrigerator slightly away from the walls.
- **Creaking:** Drawers or shelves are not seated properly. Take them out and slot them back in securely.
- **Clinking:** Bottles are knocking together. Move the bottles apart.

### Normal operating sounds:

Sounds heard during normal use are mainly due to the operation of the compressor (switching on and off) and the cooling system (the thermal expansion and contraction of the radiator as the cooling agent flows through it).

### Power Failure

- Most power failures are corrected within a few hours and should not affect the temperature of your appliance if you minimise the number of times the door is opened. If the power is going to be off for a longer period of time, take proper steps to protect the contents.
- For long-term periods of turning your friends off. Unplug the appliance and clean it. Keep doors open to prevent any odours.

### Service, repair and spare parts

Do not attempt to alter or modify this appliance in any way, or to repair or replace any part unless it is specifically recommended in this manual. All other servicing should be referred to a qualified technician. Contact our after sales support on 1300 11 43 57 for advice.

Our after sales support centre stocks a selection of spare parts for the Mykin Refrigerator. To enquire about purchasing a part, call us on 1300 11 43 57 or email [support@residentialgroup.com.au](mailto:support@residentialgroup.com.au)

# Technical Specifications

<b>Model/s:</b>	MSBS548G, MSBS548X
<b>Product Dimensions:</b>	W: 897mm, D: 761mm, H: 1765mm
<b>Weight (Net):</b>	80kg
<b>Total Capacity:</b>	555L
<b>Fridge Capacity:</b>	349L
<b>Freezer Capacity:</b>	206L
<b>Refrigerant/Amount:</b>	R600a/74g
<b>Energy Rating:</b>	3.5 Stars MEPS
<b>Consumption:</b>	453 kWh per year
<b>Power Cord Length:</b>	1750mm

## Standards

This product complies with AS/NZS 60335.1 and AS/NZS 60335.2.24 electrical safety, and with EN 55014-1:2006+A1:2009 A2:2011 for electromagnetic compatibility.

# Purchase Details

For your records, please record details of your purchase below and staple your receipt on the opposite page.

Your serial number can be found on the rear of your refrigerator

---

## STORE DETAILS

---

STORE NAME | \_\_\_\_\_

ADDRESS | \_\_\_\_\_

TELEPHONE | \_\_\_\_\_

PURCHASE DATE | \_\_\_\_\_

---

## PRODUCT DETAILS

---

MODEL NO. | \_\_\_\_\_

SERIAL NO.\* | \_\_\_\_\_

# Attach your receipt to this page



# Warranty Information

## WARRANTY TERMS AND CONDITIONS REFRIGERATORS

This document sets out the terms and conditions of the product warranties for Residentia Group Appliances. It is an important document. Please keep it with your proof of purchase documents in a safe place for future reference should you require service for your Appliance.

### 1. IN THIS WARRANTY

- (a) 'acceptable quality' as referred to in clause 10 of this warranty has the same meaning referred to in the ACL;
- (b) 'ACL' means Trade Practices Amendment (Australian Consumer Law) Act (No.2) 2010;
- (c) 'Appliance' means any Residentia Group product purchased by you accompanied by this document;
- (d) 'ASR' means Residentia Group authorised service representative;
- (e) 'Residentia Group' means Residentia Group Pty Ltd of 165 Barkly Ave, Burnley VIC 3121, ACN 600 546 656 in respect of Appliances purchased in Australia;
- (f) 'major failure' as referred to in clause 10 of this warranty has the same meaning referred to in the ACL and includes a situation when an Appliance cannot be repaired or it is uneconomic for Residentia Group, at its discretion, to repair an Appliance during the Warranty Period;
- (g) 'Warranty Period' means:
  - (i) where the Appliance is used for personal, domestic or household use (i.e. normal single family use) as set out in the instruction manual, the Appliance is warranted against manufacturing defects for 24 months, following the date of original purchase of the Appliance;
- (h) 'you' means the purchaser of the Appliance not having purchased the Appliance for re-sale, and 'your' has a corresponding meaning.

2. This warranty only applies to Appliances purchased and used in Australia and is in addition to (and does not exclude, restrict, or modify in any way) any non-excludable statutory warranties in Australia.

3. During the Warranty Period Residentia Group or its ASR will, at no extra charge if your Appliance is readily accessible for service, without special equipment and subject to these terms and conditions, repair or replace any parts which it considers to be defective. Residentia Group or its ASR may use remanufactured parts to repair your Appliance. You agree that any replaced Appliances or parts become the property of Residentia Group. This warranty does not apply to light globes, batteries, filters, seals or similar perishable parts.
4. Parts and Appliances not supplied by Residentia Group are not covered by this warranty.
5. You will bear the cost of transportation, travel and delivery of the Appliance to and from Residentia Group or its ASR. If you reside outside of the service area, you will bear the cost of:
  - (a) travel of an authorised representative;
  - (b) transportation and delivery of the Appliance to and from Residentia Group or its ASR, in all instances, unless the Appliance is transported by Residentia Group or its ASR, the Appliance is transported at the owner's cost and risk while in transit to and from Residentia Group or its ASR.
6. Proof of purchase is required before you can make a claim under this warranty.

## Warranty Information (Continued)

7. You may not make a claim under this warranty unless the defect claimed is due to faulty or defective parts or workmanship. Residentia Group is not liable in the following situations (which are not exhaustive):
- (a) the Appliance is damaged by:
    - (i) accident
    - (ii) misuse or abuse, including failure to properly maintain or service
    - (iii) normal wear and tear
    - (iv) power surges, electrical storm damage or incorrect power supply
    - (v) incomplete or improper installation
    - (vi) incorrect, improper or inappropriate operation
    - (vii) insect or vermin infestation
    - (viii) failure to comply with any additional instructions supplied with the Appliance;
  - (b) the Appliance is modified without authority from Residentia Group in writing;
  - (c) the Appliance's serial number or warranty seal has been removed or defaced;
  - (d) the Appliance was serviced or repaired by anyone other than Residentia Group, an authorised repairer or ASR.
8. This warranty, the contract to which it relates and the relationship between you and Residentia Group are governed by the law applicable where the Appliance was purchased.
9. To the extent permitted by law, Residentia Group excludes all warranties and liabilities (other than as contained in this document) including liability for any loss or damage whether direct or indirect arising from your purchase, use or non use of the Appliance.<sup>10</sup> For Appliances and services provided by Residentia Group in Australia, the Appliances come with a guarantee by Residentia Group that cannot be excluded under the Australian Consumer Law. You are entitled to a replacement or refund for a major failure and for compensation for any other reasonably foreseeable loss or damage. You are also entitled to have the Appliance repaired or replaced if the Appliance fails to be of acceptable quality and the failure does not amount to a major failure. The benefits to you given by this warranty are in addition to your other rights and remedies under a law in relation to the Appliances or services to which the warranty relates.
11. At all times during the Warranty Period, Residentia Group shall, at its discretion, determine whether repair, replacement or refund will apply if an Appliance has a valid warranty claim applicable to it.
12. Missing parts are not covered by warranty. Residentia Group reserves the right to assess each request for missing parts in a case by case basis. Any parts that are not reported missing in the first week after purchase will not provide free of charge.
13. To enquire about claiming under this warranty, please follow these steps:
- (a) carefully check the operating instructions, user manual and the terms of this warranty;
  - (b) have the model and serial number of the Appliance available;
  - (c) have the proof of purchase (e.g. an invoice) available;
  - (d) telephone the numbers shown below.
14. You accept that if you make a warranty claim, Residentia Group and its ASR may exchange information in relation to you to enable Residentia Group to meet its obligations under this warranty.

### IMPORTANT

Before calling for service, please ensure that the steps in point 13 have been followed.

### CONTACT SERVICE

Service: 1300 11 HELP (4357)

<sup>10</sup>The Australian Consumer Law requires the inclusion of the following statement with this warranty:

Our goods come with guarantees that cannot be excluded under the Australian Consumer Law. You are entitled to a replacement or refund for a major failure and for compensation for any other reasonably foreseeable loss or damage. You are also entitled to have the goods repaired or replaced if the goods fail to be of acceptable quality and the failure does not amount to a major failure.



E2447

**myk1n**

**part of the family**