

BUGG®

STAND Assembly Instructions



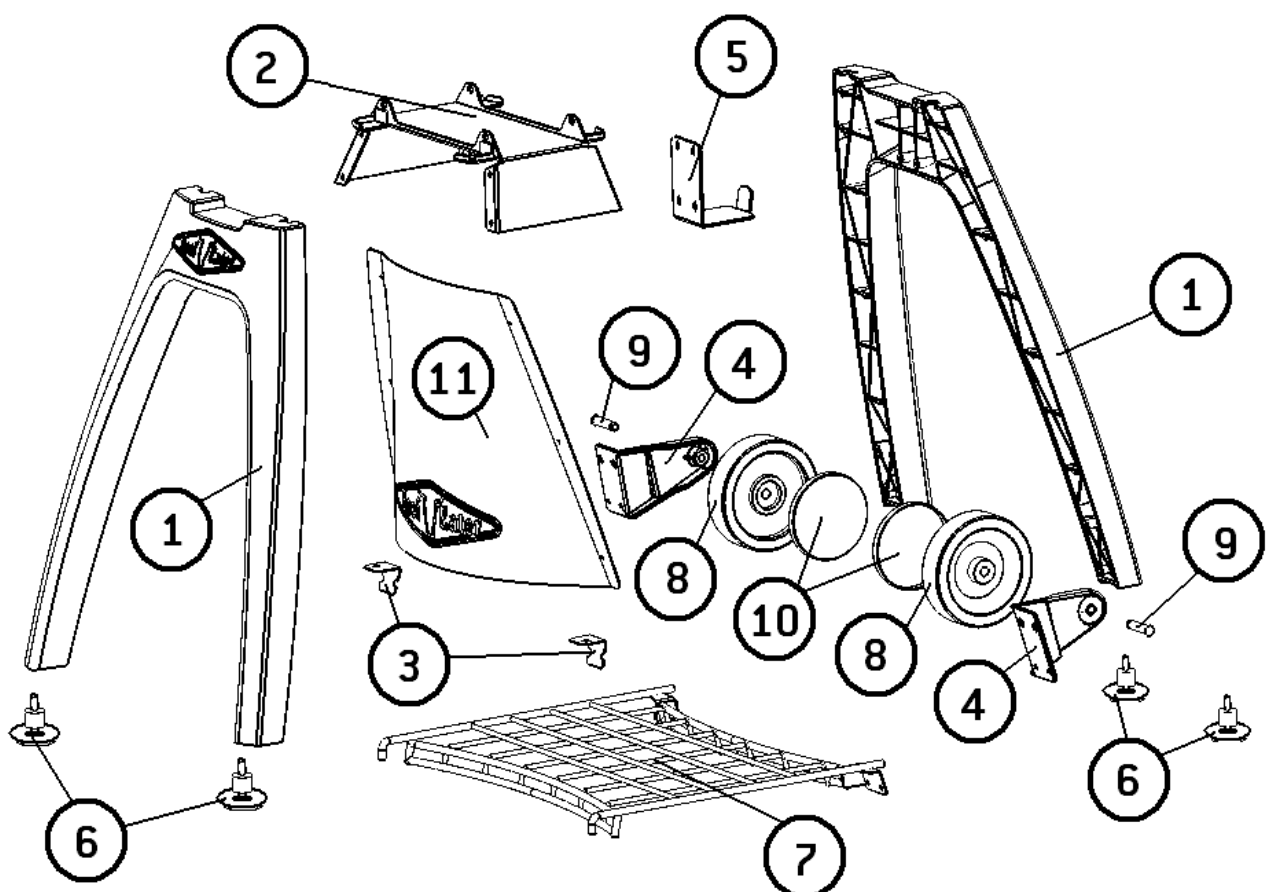
FOR OUTDOOR USE ONLY



Serious Barbecues

Content:

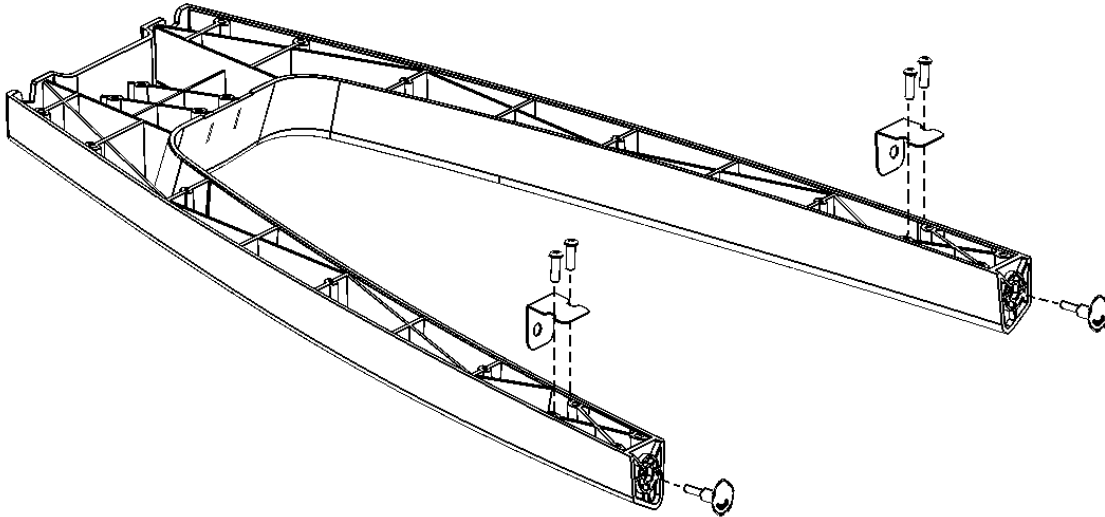
Index	Description	Quantity
1	Leg	2
2	Top Connecting Panel	1
3	Front Shelf Brackets	1R + 1L
4	Wheel Bracket	1R + 1L
5	Cylinder Hook	1
6	Silicone Feet	4
7	Wire Shelf	1
8	Wheel	2
9	Shaft	2
10	Hub Caps	2
11	Cylinder Shield	1
Fasteners		
A	Screw , 16mm (black)	20
A1	Screw , 25mm (stainless Steel)	4
B	Spring Washer	24
C	Screw, 8mm	6
D	Circlip	2
E	Plastic Washer	6
F	Alan Key	1



ASSEMBLY:

1. Assemble Front leg: [4 x A, 4 x B]

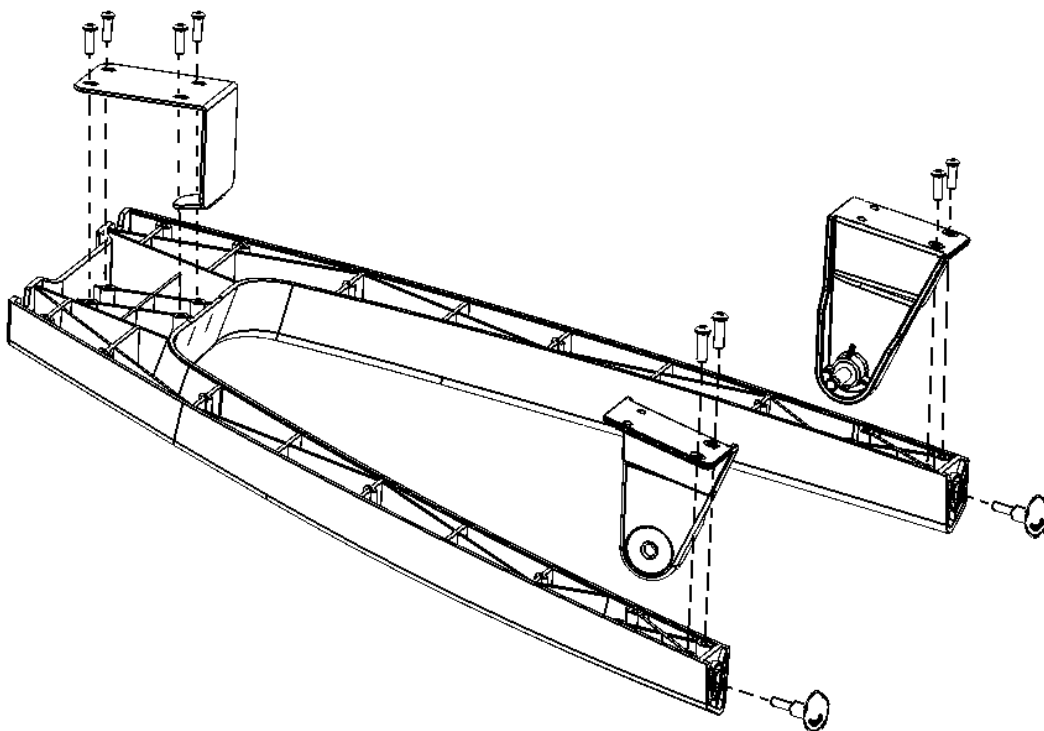
Place the Leg (1) on a padded flat, level surface and assemble the two Front Shelf Brackets (3).
Insert two Silicone Feet (6) to the bottom hole, and pull until rest against bottom of leg.



2. Assemble Back leg: [8 x A, 8 x B]

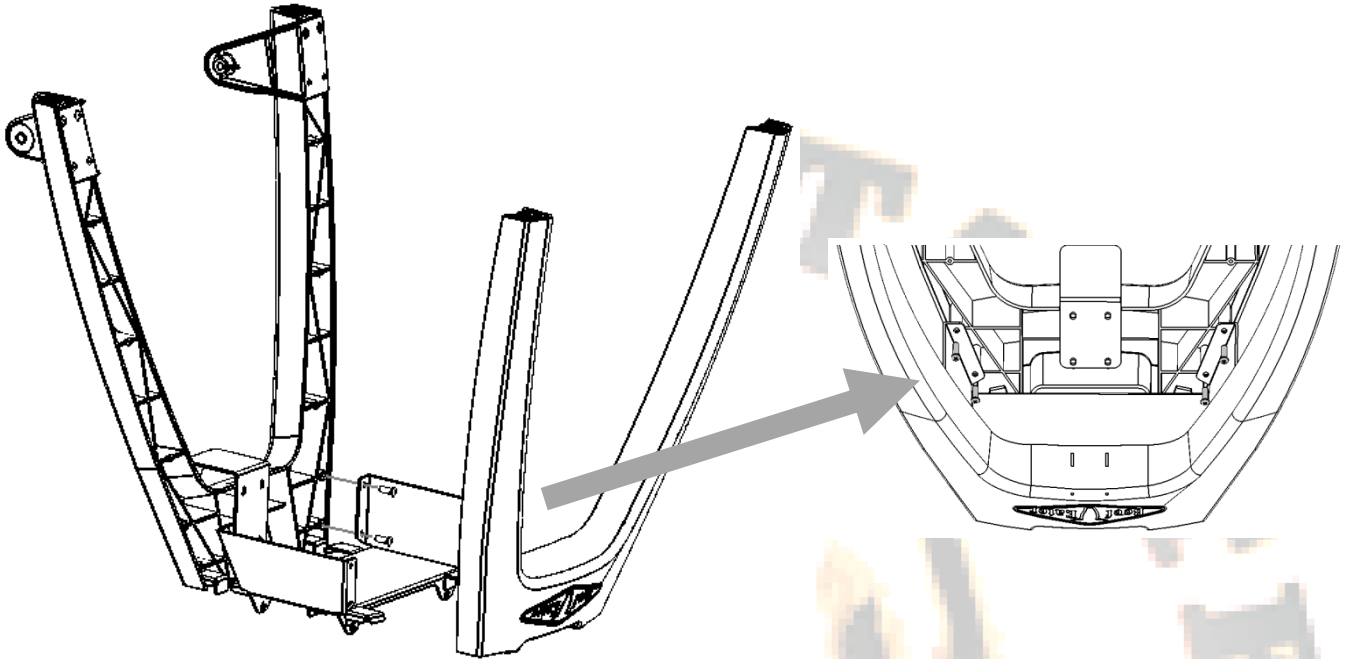
Place other Leg (1) on a padded flat, level surface and assemble the Wheel Brackets (4) and Cylinder Hook (5).
Insert two Silicone Feet (6) to the bottom hole, and pull until rest against bottom of leg.

Note: at this stage each Wheel Bracket is only attached by 2 lower screws!



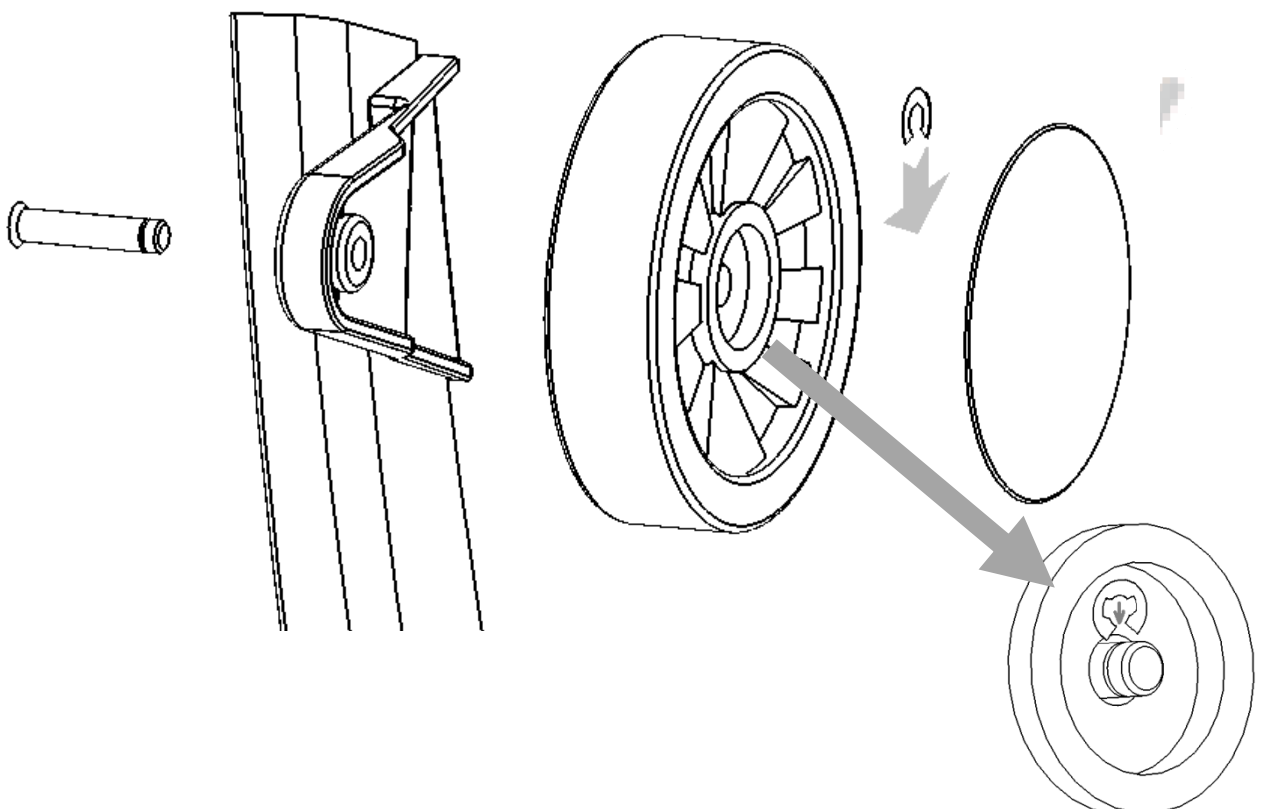
3. Assemble Stand:
[8 x A, 8 x B]

Attach the Top Connecting Panel [2] with four screws to the Front Leg and four more screws to the Back leg:



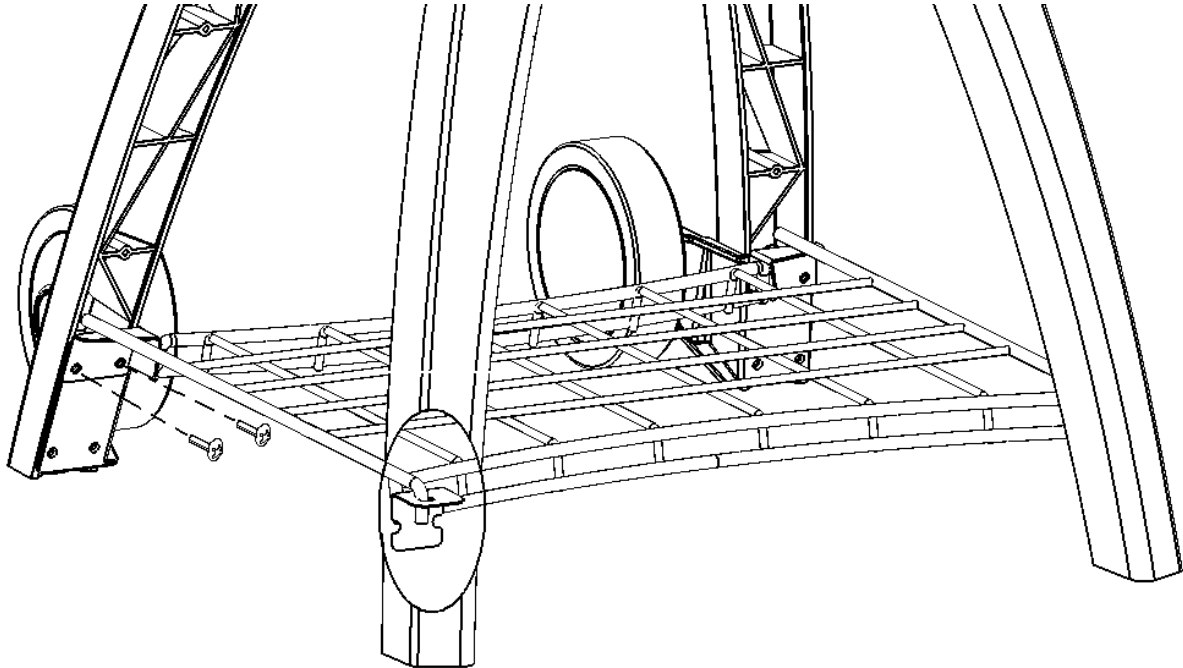
4. Assemble the wheels:
[2 x D]

Wheels [8] are placed on the inside of brackets. Insert the shaft [9] from the Wheel Bracket side inwards, and lock with a Circlip. The Circlip is to slide into the groove made in the shaft. Press the Hub-Cap [10] to place.



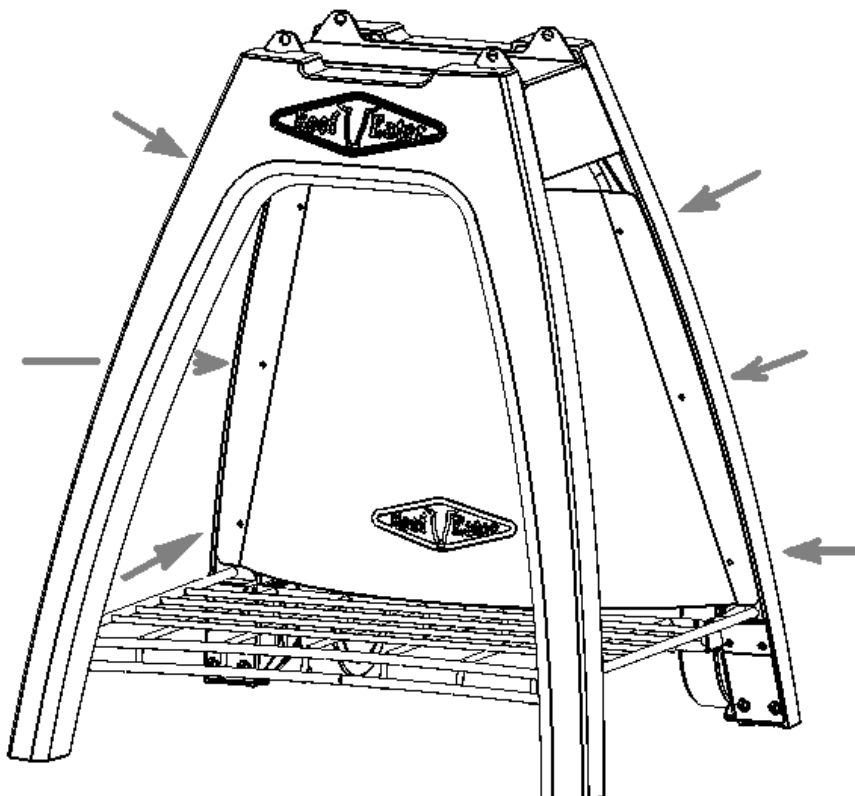
5. Fit the Wire Shelf
[4 x A1, 4 x B]

The Wire Shelf (7) has two plates, and two hooks. The hooks are facing forward, and will engage into the Front Shelf Brackets (3) assembled in step 1. The plates have two holes each through which screws go into Back Leg:



6. Place the Cylinder Shield
[6 x C, 6 x E]

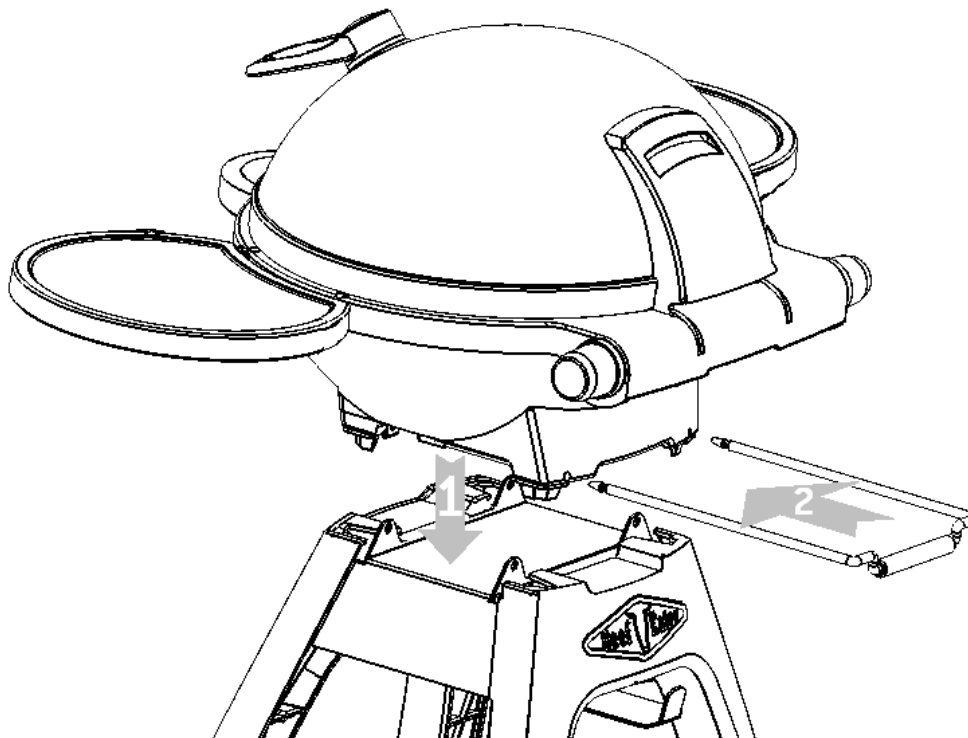
The Cylinder Shield (11) is attached to the rear leg by six screws and washers, three each side. Ensure the shield is curved towards the front:



7. Position the Barbecue into Stand, and lock:

With the stand standing on a stable, flat surface, remove the Locking U Bolt from the rear of the Barbecue, and place the Barbecue onto the stand, ensuring each leg is fully engaged into the corresponding recess in the stand.

Once the Barbecue is placed correctly over the stand, ensure the Grease-Tray is in its place under the Barbecue, and fully engage the Locking U Bolt back to its place.



Please refer to the Barbecue Instruction Book for further instructions on how to prepare and use your Barbecue.

Warranty:

Our goods come with guarantees that cannot be excluded under the Australian Consumer Law. You are entitled to a replacement or refund for a major failure and for compensation for any other reasonably foreseeable loss or damage. You are also entitled to have the goods repaired or replaced if the goods fail to be of acceptable quality and the failure does not amount to a major failure. Should any part fail due to defective workmanship or faulty materials within the specified period from the date of purchase, BeefEater or its distributor will repair or, (at distributors option), replace the defective part free of charge.

For the exact terms and conditions of the warranty for this product, please refer to page 11 of the Barbecue instructions book.

For your records:

Model Number: _____

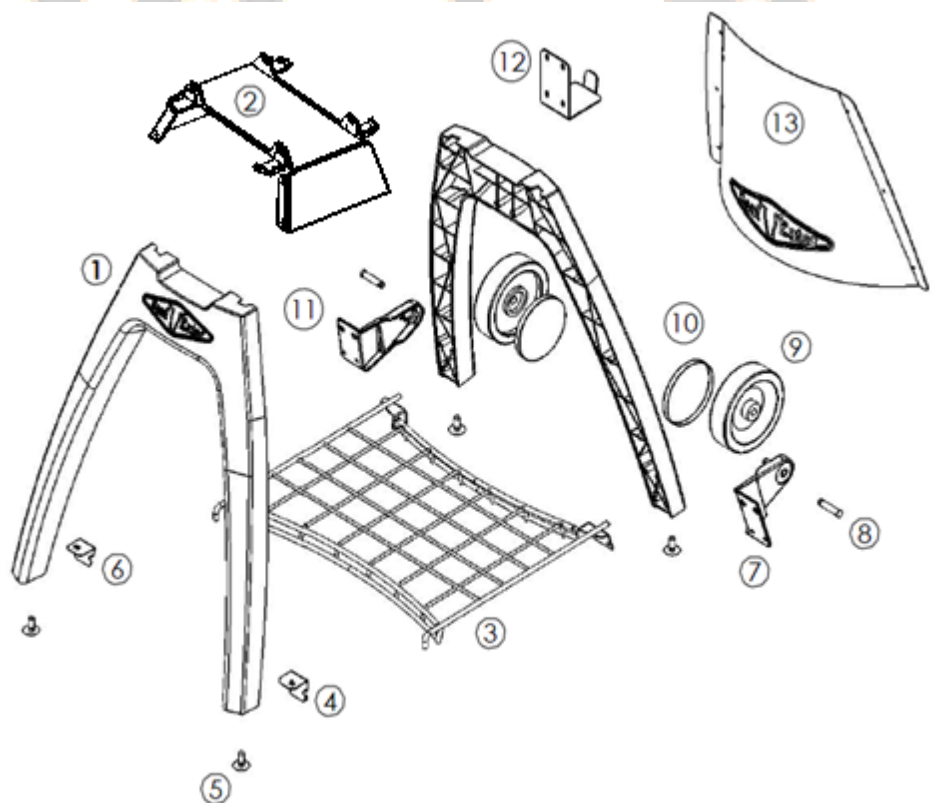
Date of Purchase: _____

Place where purchased: _____

Serial Number: _____

Spare Parts:

Index	Part No	Description
1	B06 0017	Leg
2	B04 0014	Connecting panel
3	B04 0017	Bottom shelf
4	B04 0016	Front shelf bracket RHS
5	B09 0021	Stand foot
6	B04 0015	Front shelf bracket LHS
7	B01 0018	Wheel bracket RHS (view from front))
8	B02 0018	Wheel axle
9	B09 0013	Wheel
10	B09 0014	Wheel cap*
11	B01 0017	Wheel bracket LHS (view from front)
12	B04 0018	Cylinder bracket
13	B06 0018	Cylinder shield
--	B05 0004	Instruction trolley
--	B09 0024	Bolt Pack trolley



Images in this manual are for illustrative purposes only. Due to constant improvement, BeefEater advises that changes to the design, material, specifications and product configuration may occur at any time without notice.



Woodland Home Products

3-5 Birmingham Av, Chester Hill, NSW,
Australia, 2162

Phone: 1800 356 660

Facsimile: 02 9724 8899

E-mail: mail@beefeaterbbq.com

Website: www.beefeaterbbq.com

USA Toll Free: 1866 550 2333