

duraprès

+ CURTIS STONE



BOIL IQ

1.8L Digital Glass Kettle

Boil • Brew • Infuse

DK550

THANK YOU!

We hope you enjoy your new
Duraprès Boil IQ



CONTENTS

- 4** IMPORTANT SAFEGUARDS
- 6** PARTS & ACCESSORIES
- 7** DISPLAY PANEL
- 8** HOW TO USE
- 12** CARE & CLEANING
- 13** TROUBLESHOOTING
- 14** WARRANTY
- 15** NOTES

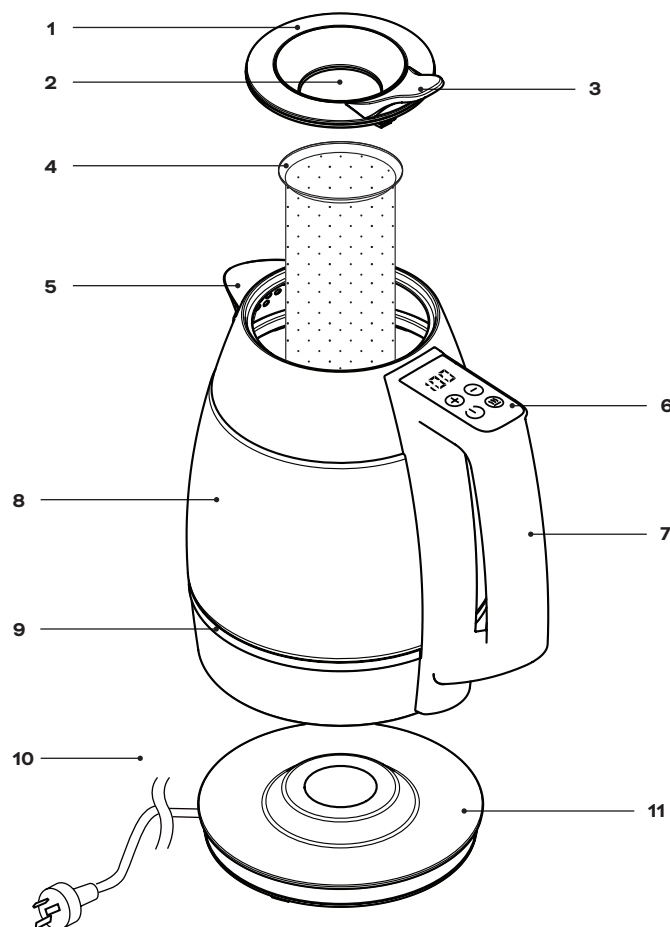
IMPORTANT SAFEGUARDS

Like any electrical appliance, the Duraprès Boil IQ must be handled with care at all times. To ensure your own safety, the following precautions should be followed:

1. Read and save all instructions.
2. When Kettle is in use the surfaces will become extremely hot. Always use the handle and do not touch any hot surfaces.
3. If your Kettle appears to be damaged or malfunctioning, do not use it.
4. Unplug the Power Plug from the power outlet when not in use and before cleaning.
5. Always wait for Kettle to cool down before cleaning.
6. Always place and use this product on a dry, stable and level surface.
7. Kettle is not intended for people (including children) who are physically impaired, have sensory or mental disabilities, or lack relevant experience and knowledge, unless someone responsible for their safety supervises or directs their use of the product.
8. Keep Kettle and its cables out of the reach of children.
9. For indoor use only. Not intended for outdoor use.
10. Never use any third-party accessories not approved by the manufacturer.
11. For domestic use only.
12. Never leave the Power Cord hanging over the edge of a kitchen table or worktop. Keep cord away from hot surfaces.
13. Never use Kettle if the Power Cord is damaged. If the Power Cord seems to be damaged discontinue use immediately. The cord must be replaced with a special cord available from the manufacturer or its service representative.
14. Never remove the Power Cord from the outlet with wet hands.
15. Never pull the plug out from the outlet by its cord.
16. Never submerge Kettle, Power Base or Power Cord in water or any other liquids.
17. Never place any part of Kettle on or near other heated surfaces (e.g. gas burners, electric cooktops, ovens etc).
18. Never move Kettle while it is switched on.
19. Kettle should be used only for heating water.
20. Never use your Kettle for anything other than its intended purpose.
21. To avoid injury or possible fire, never cover Kettle when in use.
22. Never connect this Kettle to an external timer or remote control system.
23. Never fill Kettle with water beyond the maximum fill level (clearly marked on Kettle). If Kettle is overfilled, boiling water may be ejected and cause harm.
24. Kettle must only be used with the base station provided. Do not use the base station with other products.
25. Never turn Kettle on when there is no water in it.
26. If Kettle is no longer in use, switch off Kettle and unplug Power Plug from the outlet and empty the water from the Kettle, then return Kettle to the Base.
27. Always close the Lid before turning on Kettle.
28. Avoid steam from Pouring Spout and Easy Fill Lid.
29. Never open Kettle Lid while the water is boiling.
30. Do not remove the Kettle from the base station during operation. Always ensure that the Start/Stop/Boil button has been pressed to stop heating before removing the Kettle from the Base.
31. Never place Kettle on any heat-sensitive surfaces.
32. Switch off and unplug Kettle after every use.
33. For additional protection, the use of a residual current device with a tripping current not exceeding 30mA in the electrical circuit supplying power to your appliance is recommended.

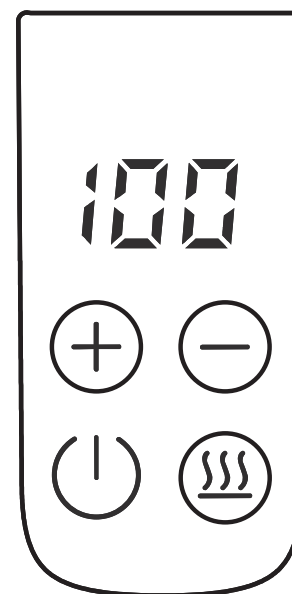
**SAVE THESE INSTRUCTIONS
FOR HOUSEHOLD USE ONLY**

PARTS & ACCESSORIES



- | | |
|-----------------|------------------|
| 1 LID | 7 HANDLE |
| 2 EASY FILL LID | 8 GLASS BODY |
| 3 LID HANDLE | 9 LED LIGHT RING |
| 4 TEA INFUSER | 10 POWER PLUG |
| 5 POURING SPOUT | 11 POWER BASE |
| 6 CONTROL PANEL | |

DISPLAY PANEL



START/STOP/BOIL

This is used to turn the Kettle on and off. If you press the Start/Stop/Boil button without selecting a temperature first, the Kettle will start heating until it reaches the default boiling temperature of 100°C. If you wish to turn the Kettle off mid-operation, simply touch the Start/Stop/Boil button.



TEMPERATURE DISPLAY

Displays the set temperature when using the Temperature Control buttons. The Temperature Display also shows the live temperature of the water while heating or when the Kettle is not running.



KEEP WARM

Keep Warm is used to hold set temperature, when reached, for 30 minutes. This function can be turned on before or during the water-heating process. The Keep Warm button will continuously flash when active. When Boil is selected, water temperature will drop and be held at 95°C.



TEMPERATURE CONTROL BUTTONS

The Temperature Controls are used to select the following temperatures: 70°C, 80°C, 85°C, 90°C and 100°C.

HOW TO USE

BEFORE FIRST USE



IMPORTANT:

For household use only. Only operate the kettle in an upright position, never tilted.

1. Clean appliance with a soft, damp cloth and then dry it thoroughly.
2. Place the Power Base on a dry, level, water and heat-resistant surface. Keep Kettle away from any flammable objects. Keep Kettle away from reach of children.
3. Insert the Power Plug into correctly installed outlet (lights on the Kettle will begin to flash).
4. To remove any dust or residue, fill the Kettle with clean drinking water to the 1.8L maximum level, then bring to the boil by pressing the Start/Stop/Boil button. After boiling has finished, switch off the Kettle and pour out the water (do not drink!). Repeat this process two more times to ensure that all dust or residue is removed.
5. Allow the Kettle to cool down first before re-filling again. Pouring cold water into the hot Kettle can cause material damage.
6. Refer to Care & Cleaning Guide in this booklet. Remove any stickers and packaging materials.



WARNING:

To avoid an electrical circuit overload, do not use another high-wattage appliance on the same circuit with your Kettle. The length of the cord used on this appliance was selected to reduce the hazards of becoming tangled in, or tripping over a longer cord. If a longer cord is necessary, an approved extension cord may be used. The electrical rating of the extension cord must be equal to or greater than the rating of the appliance. Care must be taken to arrange the extension cord so that it will not drape over the countertop or tabletop where it can be pulled on by children or accidentally tripped over.

UNDERSTANDING THE LED LIGHT RING

When the Kettle is in operation, the LED light at the bottom of the Kettle will illuminate blue. The LED light ring will turn red when it reaches 90°C, indicating that water is about to boil.

HOW TO OPERATE YOUR KETTLE

1. Place Kettle and Power Base on a dry, level, water and heat-resistant surface.
2. Remove Kettle from Power Base and fill by pouring water directly into the Easy Fill Lid. Lid can be removed if desired, but this is not required.
3. Return Kettle securely to Power Base and insert Power Plug into the power outlet.
4. Once plugged in, the Kettle will beep twice. Temperature Display will show current water temperature. All four buttons on the Control Panel will light up.
5. To select temperature, touch + / - buttons. Once selected, the temperature on the Temperature Display will blink for 10 sec. Touch Start/Stop/Boil button to start heating. Alternatively, you can press Start/Stop/Boil button to Boil water. Once temperature has been reached, the Kettle will automatically switch off.

To stop heating at any time, touch Start/Stop/Boil button.

After 3 minutes of no use, Kettle will automatically go into Standby mode. To wake Kettle, touch any button.



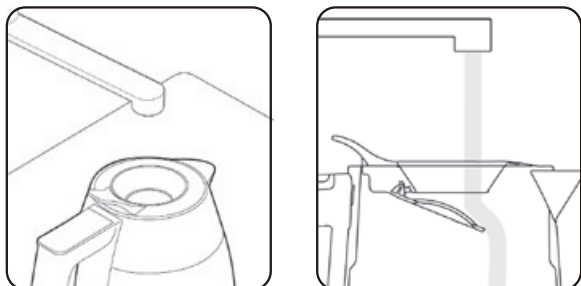
WARNING:

Take extra caution as surfaces on the kettle body can become hot when in use.

HOW TO USE

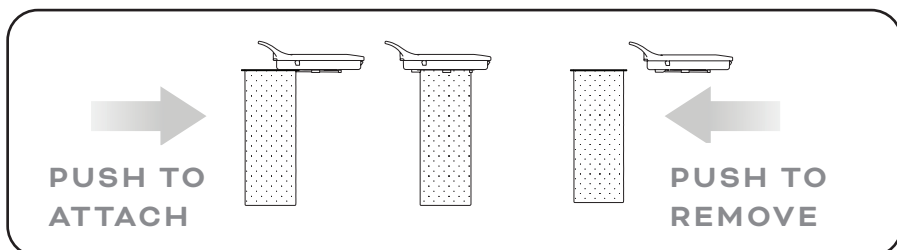
USING THE EASY FILL LID

To fill your kettle, simply pour water directly onto the Easy Fill Lid.



USING YOUR TEA INFUSER

1. Set your desired water temperature and press the Start/Stop/Boil Button. Then activate Keep Warm mode.
2. Place tea leaves into Tea Infuser.
3. When water has reached set temperature, remove the Easy Fill Lid. Then from the Lid Handle side, slide the Tea Infuser into the underside of the Easy Fill Lid. Press firmly until you hear a “click” and check that the Tea Infuser is locked into place. Insert the Tea Infuser into the Kettle and let tea steep to your desired time.
4. Once your tea is finished steeping, remove Tea Infuser from Easy Fill Lid (caution as Tea Infuser may be hot). To remove, simply slide the Tea Infuser outward towards the Lid Handle. Replace Easy Fill Lid securely onto Kettle.



TEA TEMPERATURE GUIDE

The correct water brewing temperature is essential in achieving the optimum flavour extraction of tea. The Tea Temperature Guide below shows the recommended brewing temperatures for different types of tea.


TEA	TEMPERATURE	STEEP TIME
Delicate Tea	70°C	1-3 minutes
Green Tea	80°C	1-3 minutes
White Tea	85°C	3-5 minutes
Oolong Tea	90°C	3-5 minutes
Black Tea, Herbal Teas	100°C	5-7 minutes



IMPORTANT:

This table is a recommended guideline only and results may vary depending on personal preference, brand and age of tea used.

HOW TO USE KEEP WARM FUNCTION

To turn on the Keep Warm function, simply touch the Keep Warm button . You can activate Keep Warm function before or after starting Kettle.

The Keep Warm button will flash continuously when activated. Water will be kept at the temperature you selected for 30 minutes, then Kettle will switch off automatically. Keep Warm function cannot be activated after the Kettle has turned off.

NOTE: IF KEEP WARM IS ACTIVATED WHEN SET TO BOIL (100°C), THE KETTLE ONCE BOILED WILL LOWER AND HOLD THE TEMPERATURE AT 90°C).

CARE & CLEANING

This appliance requires little maintenance. It contains no user serviceable parts. Do not try to repair it yourself. Contact the customer service team for any unusual issues you may experience.

1. Always unplug Kettle from outlet before cleaning.
2. Allow Kettle to cool down before cleaning.
3. Clean Kettle exterior with damp cloth. Do not use abrasive cleaners or scouring agents.
4. Do not immerse Kettle in water or other liquids or place it under running water. If water remains in the lower base of Kettle it could cause a short circuit when switched on.
5. Descale Kettle frequently. Refer to instructions below.
6. Kettle and Easy Fill Lid are not dishwasher safe. Hand-wash only.
7. Contact Customer Service for any issues or malfunctions that should occur.

DESCALING

We recommend descaling your kettle from time to time; this will ensure that your Kettle performance will always be at the highest level. The frequency of descaling will depend on the hardness (milligrams of calcium carbonate equivalent per liter) of your tap water and how often you use your Kettle.

We suggest the use of a Kettle descaler in order to dissolve the scale build-up. Follow the guidelines outlined by the descaler of choice. You can also descale your Kettle with white vinegar. To do this, fill your Kettle with enough white vinegar to cover the bottom of the Kettle by approx. 20mm. Boil the vinegar to dissolve the scale. This may need to be repeated several times with new cold vinegar to remove the build-up completely. When the Kettle is descaled, empty the Kettle and carefully rinse out several times with clean water. Be careful not to inhale the fumes during this process.

TROUBLESHOOTING

ISSUE	POSSIBLE CAUSE	SOLUTION
Kettle cannot be turned on.	Has Kettle overheated?	Wait until Kettle has cooled down, then fill it with water and try again.
	Is the Power Plug correctly inserted into the plug socket?	Correct the fit of the Power Cord.
	The outlet is defective.	Try another power outlet.
Kettle turns off before the water has boiled or reached set temperature.	Is the amount of water below MIN. marking?	Pour in more water.
Kettle does not turn off.	Is Kettle lid properly closed?	Correct fit of lid.
	Has Keep-Warm function been activated?	Turn off Kettle using ON/OFF button or remove it from Power Base.
Error Code: E1	Dry Boil	Allow Kettle to cool.
Error Code: E2	Open Circuit	Contact Customer Service Team. Please do not try to repair or disassemble Kettle.

WARRANTY

This warranty covers all defects in workmanship or materials in the mechanical and electrical parts, arising under normal usage and care, for this product for a period of 24 months from the date of purchase provided you are able to present a valid proof-of-purchase. A valid proof of purchase is a receipt specifying item, date purchased, and cost of item. Product is intended for household use only. Any commercial use voids the warranty.

This warranty covers the original retail purchase. During the applicable warranty period within normal household use, we will repair or replace, at our discretion, any mechanical or electrical part which proves defective, or replace unit with a comparable model.

THIS LIMITED WARRANTY COVERS UNITS PURCHASED AND USED WITHIN AUSTRALIA DOES NOT COVER:

- Damages from improper installation.
- Defects other than manufacturing defects.
- Damages from misuse, abuse, accident, alteration, lack of proper care and maintenance, or incorrect current or voltage.
- Damage from service by other than an authorised dealer or service center.
- Shipping and handling charges may apply.
- Proof of purchase is required to confirm the warranty.
- This warranty does not exclude, restrict or modify any state or federal legislation applicable to the supply of goods and services.

To register your warranty, please visit www.durapres.com/warranty

DURAPRÈS PRODUCTS CUSTOMER SERVICE INFORMATION

Should you have any concerns, issues or questions regarding your Duraprès product please visit www.durapres.com/contact

Food Fight Australia Pty. Ltd. • Made in China

NOTES

