

## TROUBLESHOOTING

PROBLEM	CAUSE	SOLUTION
Water leaking into bowl.	Leaking outlet valve caused by debris in bottom of cistern stopping valve properly closing after flush.	Turn off stop cock. Remove outlet valve and clear debris.
	Leaking outlet valve caused by incorrectly installed or faulty seal.	Replace seal.
	Leaking Inlet valve.	Clean inlet valve. Replace inlet valve.
	Stop-cock or mini-tap leaking.	Tighten or replace stop-cock or mini-tap.
Water leaking onto floor.	Flush Pipe or P-trap waste connector leaking.	Remove pan and re-install pipe and connector ensuring proper sealing of pipes to ceramic outlets.
Loose seats.	Hinge pin bolts are loose.	Remove seat and tighten hinge pin bolts. (Refer seat installation guide)
Toilet seat or cover slamming closed.	Soft close hinges are faulty or damaged.	Replace soft close hinges- available as a spare part.

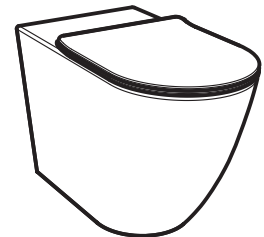
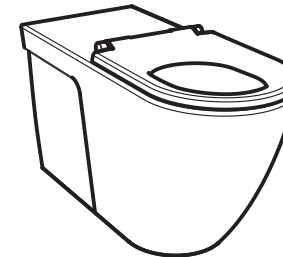
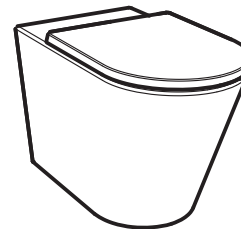
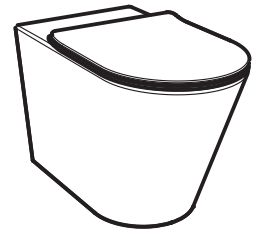
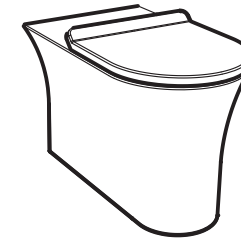
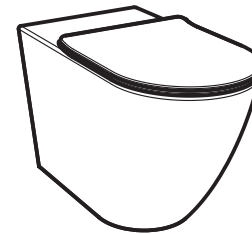
## WARRANTY

Refer to our website for full warranty terms and conditions:

[www.parisi.com.au/pages/warranty-information](http://www.parisi.com.au/pages/warranty-information)

## WALL FACED PAN INSTALLATION INSTRUCTIONS

PN610 ELLISSE  
 PN710 SLIM  
 PN740 L'HOTEL  
 PN770 LINFA  
 PN810 ELLISSE ACCESSIBLE  
 PN830 ELLISSE AMBULANT



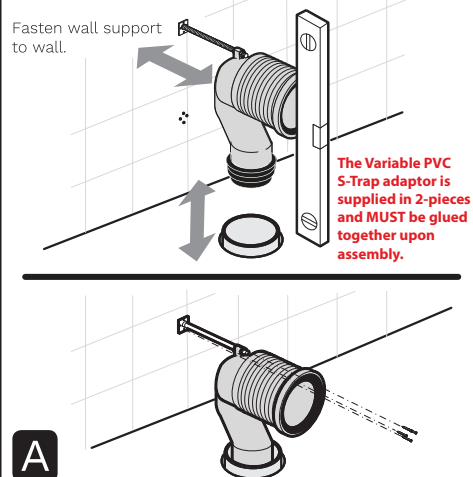
# INSTALLATION

INSTALLATION AND TESTING TO BE UNDERTAKEN IN ACCORDANCE WITH RELEVANT PLUMBING STANDARDS.  
PLEASE CHECK THAT ALL PARTS ARE INCLUDED AND COMPONENTS ARE NOT DAMAGED.  
DO NOT INSTALL ANY DAMAGED COMPONENTS. CONTACT POINT OF PURCHASE FOR REPLACEMENT.  
\* TOILETS HAVE REGULATORY APPROVAL TO BE INSTALLED USING SILICONE ADHESIVE/BEDDING.

If S-Trap is required, measure and trim Variable PVC S-Trap Adaptor with wall support to correct length. (Refer Tech Spec sheet for set-out range)

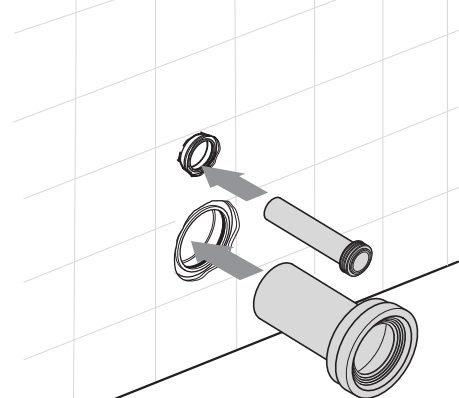
Install waste pipe seal.

Fasten wall support to wall.



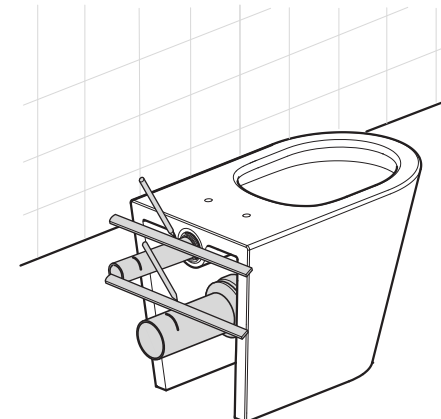
A

If P-Trap is required, insert both P-Trap Connector and Flush Pipe Connector into cistern outlet and waste pipe.



B

Using a ruler, mark the rear pan face on the two pipes.

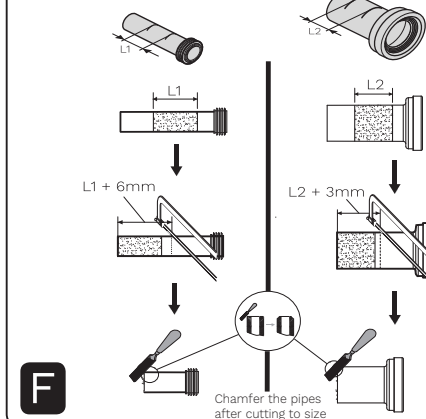


E

Remove P-Trap Connector and Flush Pipe Connector.

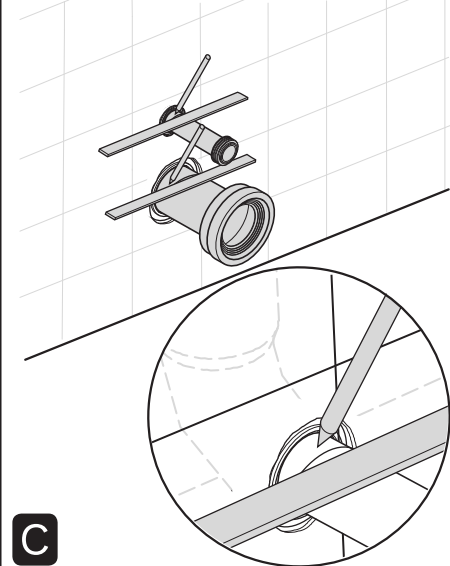
For the Flush Pipe, measure the distance between the 2 lines, and add 6mm. Then cut the total dimension from the end of the pipe.

For the P-Trap Connector, measure the distance between the 2 lines, and add 3mm. Then cut the total dimension from the end of the pipe.



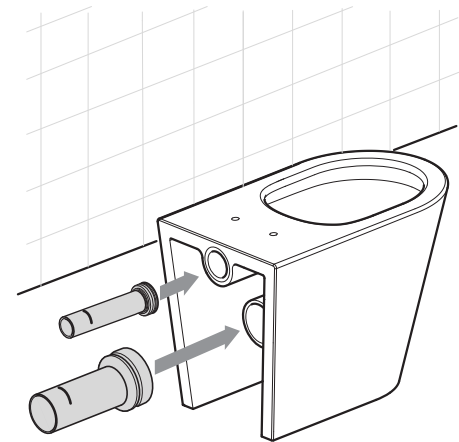
F

Using a ruler, mark the wall face on the two pipes



C

Remove Pan Connector and Flush Pipe Connector and install into rear of Pan.

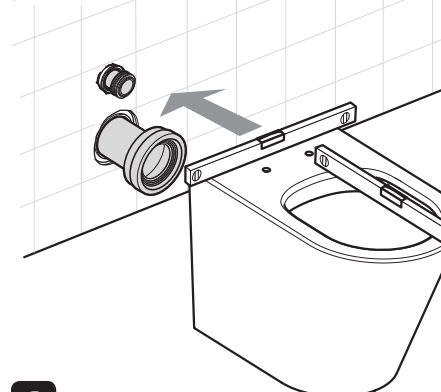


D

Re-attach P-Trap Connector and Flush Pipe cistern outlet and waste pipe.

Carefully push Pan against wall ensuring pipes engage with cistern outlet and waste pipe.

Attached to floor using a generous bead of silicone, ensuring pan is level. \*

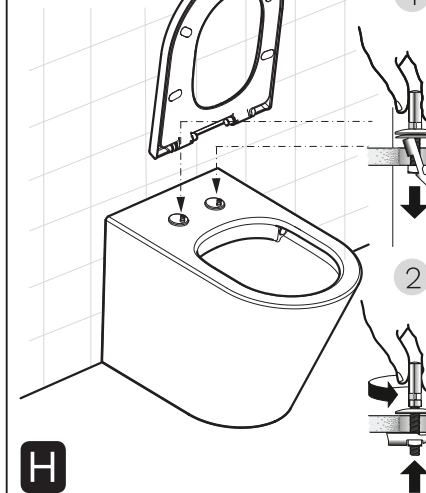


G

Install seat according to seat installation instructions.

Flush the toilet.

Check for leaks.



H