

Creative Service Department

Quick Start Guide design	
Product: IMM514,517	Revision 1 : May 5, 2011
Project: Quick Start Guide	2 :
Designer: Ahri Kwak	3 :
Scale: 1:1	4 :
Print-out: 100 %	5 :



- Please do not print comment layer
- 100% actual size
- 4-color CMYK printing

Designed by iLuv in New York

Speaker Dock for iPad / iPhone / iPod

PATENT PENDING

Quick Start Guide
ArtStation Pro / IMM514
ArtStation Pro Plus / IMM517

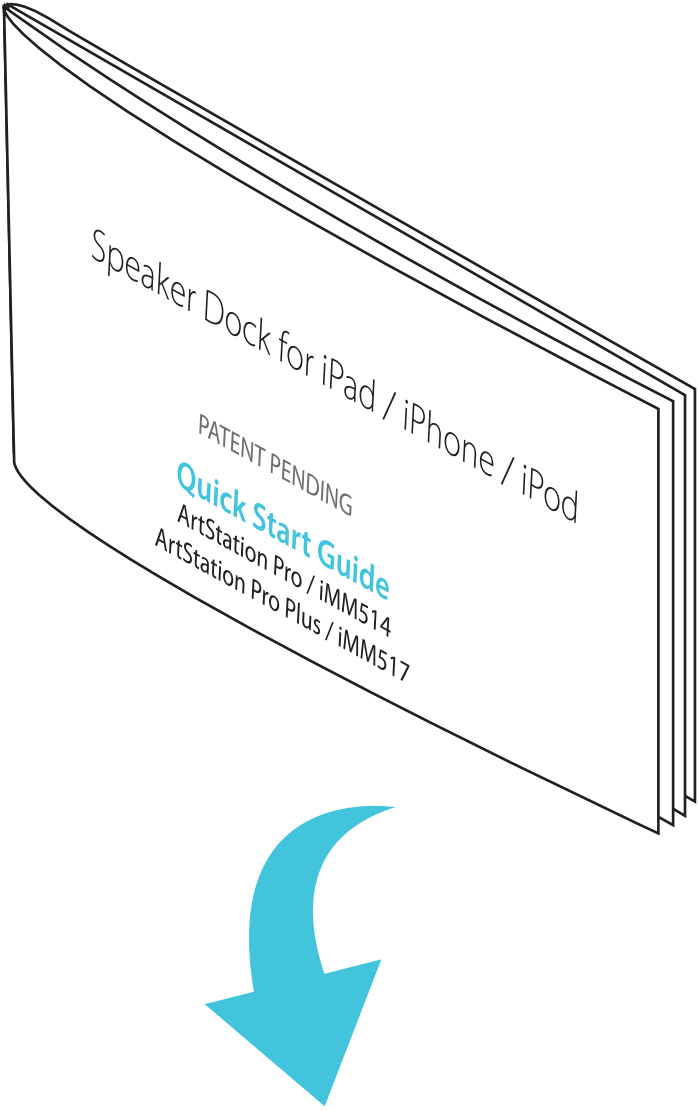
Welcome.

iLuv® Innovative Lifestyle
Unquestionable Value®

CONTENTS | Speaker Dock for iPad / iPhone / iPod | IMM514 / IMM517

- WHAT'S INCLUDED 3.4
- POWERING UP 5
- DOCKING AND PLAYING 6.7
- CONTROLS 8.9
- PAIRING 10.11.12
- CONNECTING OTHER DEVICES 13
- WARRANTY 14

2



WHAT'S INCLUDED

- IMM514 Main Unit
- Holder for iPhone / iPod
- Remote Control
- Holder for iPad *

NOTE : Rubber pads are for iPad 2 ONLY.
Remove to dock earlier iPad

- Sync Cable
- AC Adapter 100~240V
- Keyboard (For IMM517 Only)

POWERING UP

- AC 100-240V

- CHOOSE HOLDER for iPad or holder for iPhone / iPod and insert on docking arm.
(Holder for iPad shown)

5

6

CONTROLS

- Reverse
- Play / Pause
- Forward
- Volume
- Power

7

8

Remote Control

- Power
- Reverse
- Volume
- Magnet in Back
- Play / Pause
- Forward
- Volume +
- Magnetic Remote Control Storage

9

10

NOTE : Insert 2 "AAA" Batteries (Not Included)

- Go to Settings
- Switch ON | Push CONNECT button
- "Bluetooth Keyboard" would like to pair with your iPad.
Enter the PIN code "XXXX" on "Bluetooth Keyboard", followed by the return or enter key.
- "XXXX": iPad will prompt and provide PIN code. Type PIN code on keyboard and press return.
- IMPORTANT
When keyboard is turned off, connection with paired iPad must be re-established when powering back on. Switch to ON and press any key twice to reconnect.

11

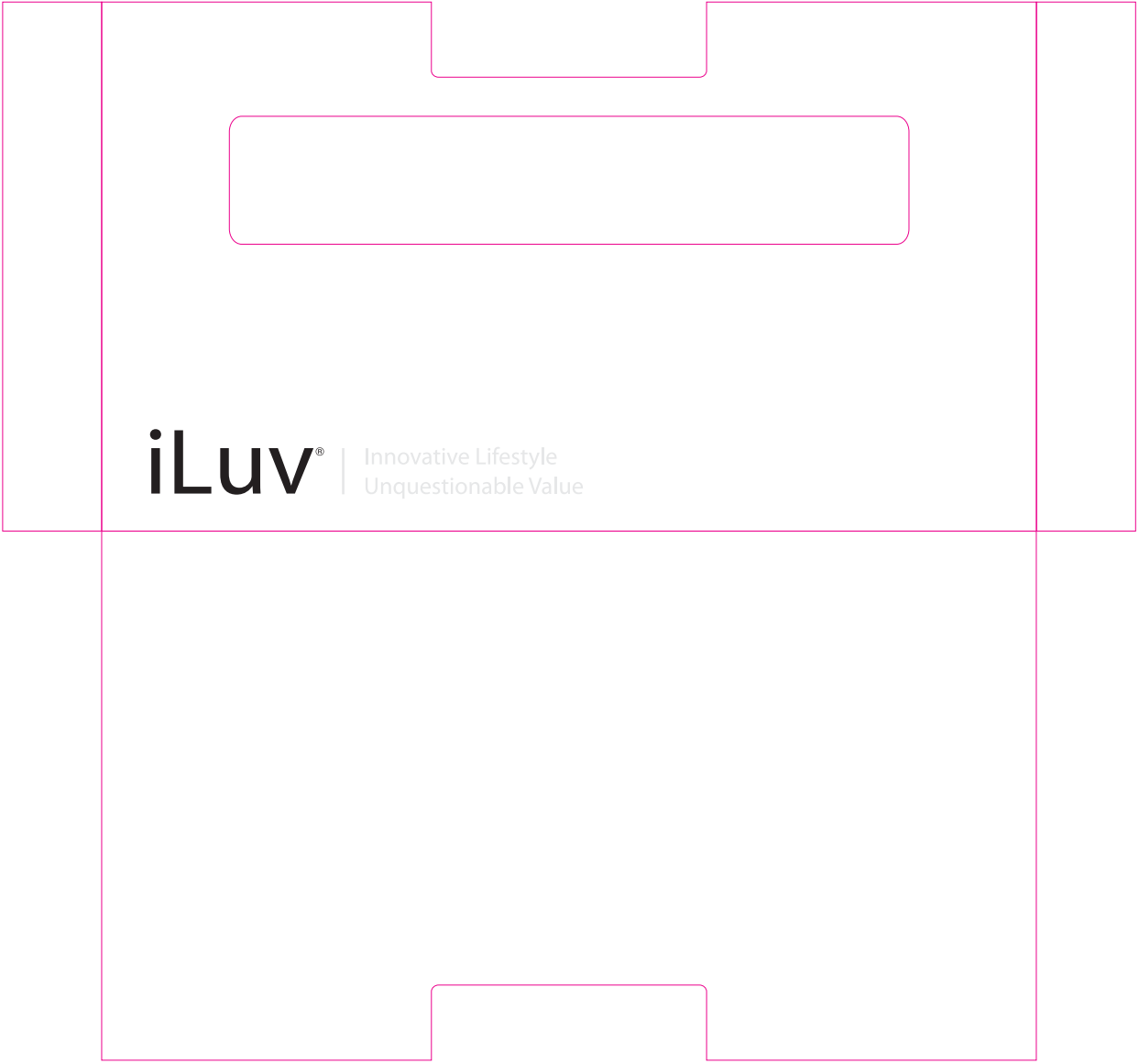
12

CONNECTING OTHER DEVICES

- MP3 Player or Smartphone
- Connect AUX IN Cable (Not Included)

13

14



Sleeve artwork
Paper weight 150g

QSG artwork (Staple binding)
Paper weight 100g