

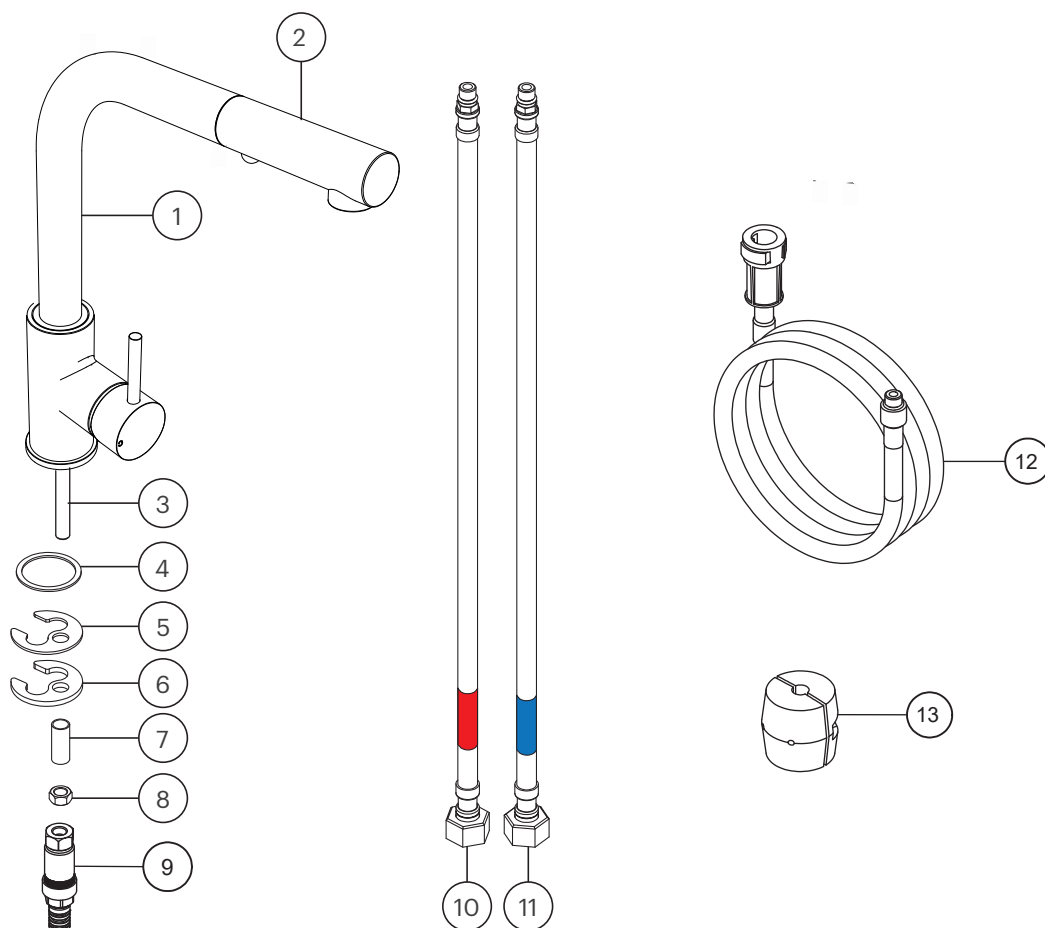
Tonic

by Rogerseller

Square Pull Out Sink Mixer

Installation
Instructions

Specification



Tonic by Rogerseller
Pull Out Sink Mixer Square
3606013901 — Chrome

i Other finishes available

Parts List

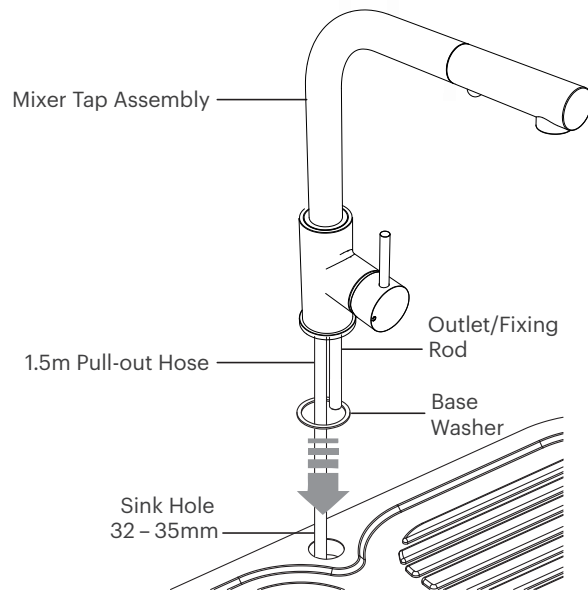
- | | |
|------------------------------|-----------------------------|
| 1. Mixer Tap Assembly | 10. Hot Ramflex Flexi Hose |
| 2. Pull-out Hand Piece | 11. Cold Ramflex Flexi Hose |
| 3. Outlet/Fixing Rod | 12. 1.5m Pull-out Hose |
| 4. Rubber Base Washer | 13. Counter Weight |
| 5. Rubber Horseshoe Washer | |
| 6. Metal Horseshoe Washer | |
| 7. Spacer | |
| 8. Nut | |
| 9. Dual Check Valve Assembly | |

Installation

Step 1

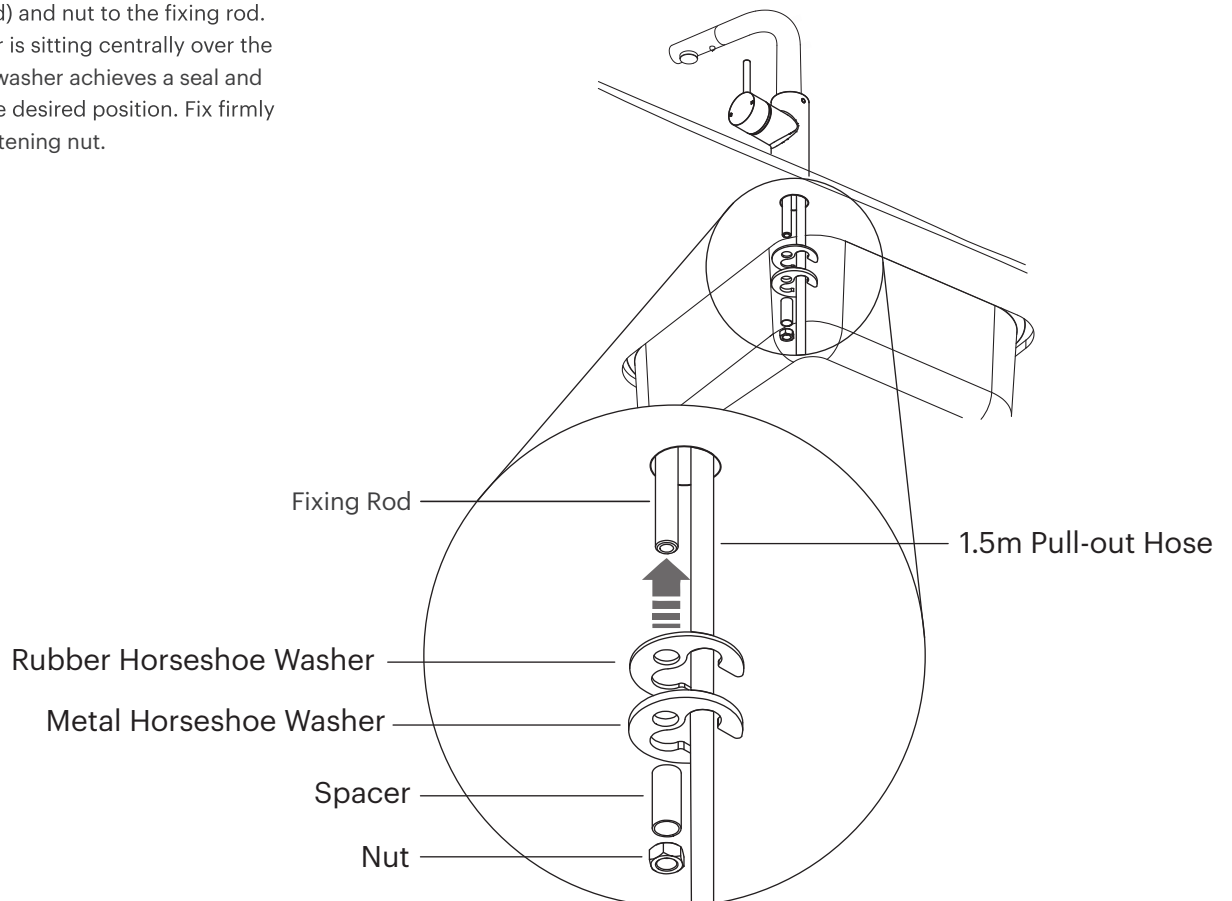
If not already done so, disassemble the fixing components so as you are left with the mixer tap assembly, pull out hose and the outlet/fixing rod. Feed the base washer over the 1.5m pull-out hose and fixing rod. Guide the 1.5m pull-out hose and mixer tap assembly into the sink hole.

Bench Hole Requirements:
Minimum Hole Size - Ø32mm
Maximum Hole Size - Ø35mm



Step 2

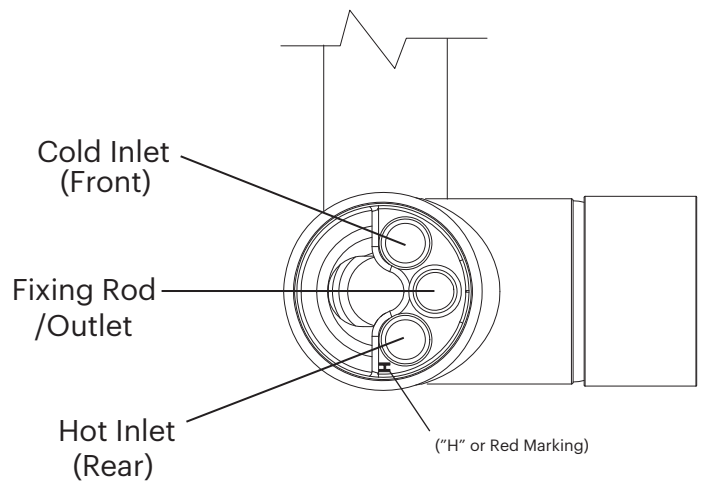
From the underside, apply the rubber horseshoe washer, metal horseshoe washer, spacer (if required) and nut to the fixing rod. Confirm the mixer is sitting centrally over the hole so the base washer achieves a seal and mixer is facing the desired position. Fix firmly into place by tightening nut.



Installation

Step 3

Connect the hot and cold flexible hoses to the appropriate inlets. (shown in the illustration)
Screw all in a clockwise direction by hand until they come to a stop.



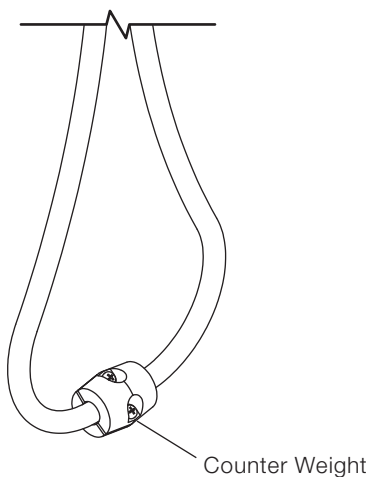
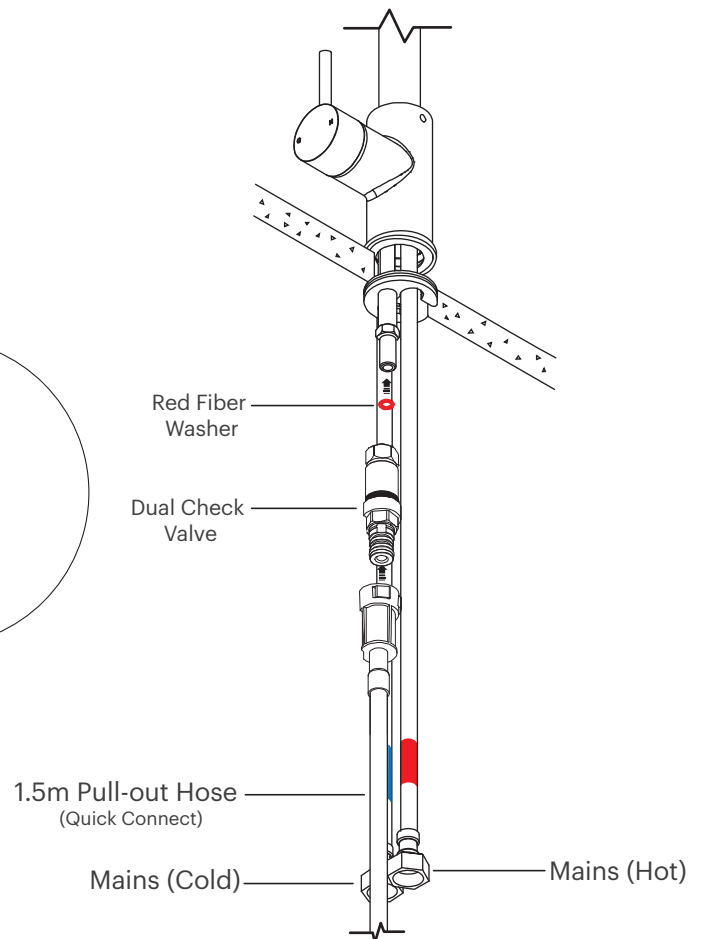
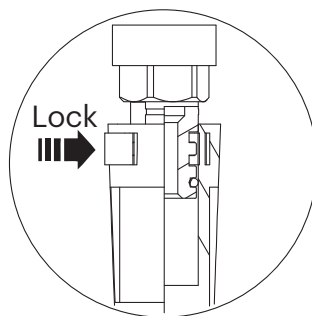
Step 4

Connect the dual check valve assembly to the fixing rod.

Connect inlet hoses to the mains supply then connect the 1.5m Pull-out hose to the dual check valve and lock in place by pushing the blue tap inward. Ensure inlet hoses don't impede movement of the 1.5m Pull-out hose.

Apply the hose counter weight to the lowest point in the hose loop.

Take hand piece and unscrew from pull out hose. Introduce mains water supply, open the handle in the mixed position and flush out any debris from installation. Re-install the hand piece to complete the installation.



Specifications

It is a requirement of state plumbing codes that licensed plumbers carry out all tapware installations. All installations must comply with the relevant requirements of AS/NZS3500 and local plumbing codes.

Pressure

Maximum Hydrostatic Pressure - 1000kpa

Recommended Maximum Hydrostatic Pressure - 500 kpa. (AS/NZS 3500)

Recommended Minimum Hydrostatic Pressure - 150 kpa.

Maximum Hydrostatic Pressure may be exceeded under test conditions only in accordance with AS/NZS 3500. Where hydrostatic pressure exceeds the maximum stated above, pressure limiting valves must be installed or warranty will be void.

Temperature

Maximum Water Temperature - 80°C

For optimum performance, Hot and Cold inlet water pressure should be equal.

Care and Maintenance

[1] Product should be inspected for surface damage prior to installation. [2] Cleaning and handling of all finishes must be performed carefully. [3] Clean products using a soft cloth with warm soapy water only. [4] Never use harsh detergents or abrasive cleaners as these will damage the product. [5] Water marks can be removed from Matt Finishes with an application of a carnauba wax based non-abrasive polish on a microfibre cloth. [6] Do not use undue pressure when cleaning and wipe in one direction only. [7] Contact with harsh chemicals such as hair dye, hair bleach etc will result in damage to the finish. [8] Tapware should never be installed using acetone silicones. [9] Avoid the use of wax based furniture creams as this can result in a build up of deposits which will detract from the appearance. [10] Damage to finishes arising from improper installation or post installation use or failure to observe the above care and cleaning instructions will void all warranty agreements.

Please note —

Dimensions are approximate. Information provided in these installation instructions is representative of the actual products available at the time of printing. Due to our policy of continuous product development, the designs and specifications depicted are subject to change without notice. Please confirm all particulars with your product expert prior to purchase. Each product is covered by a limited warranty. Full terms and conditions are available from your product expert.

rogerseller

f p @ in

rogerseller.com.au