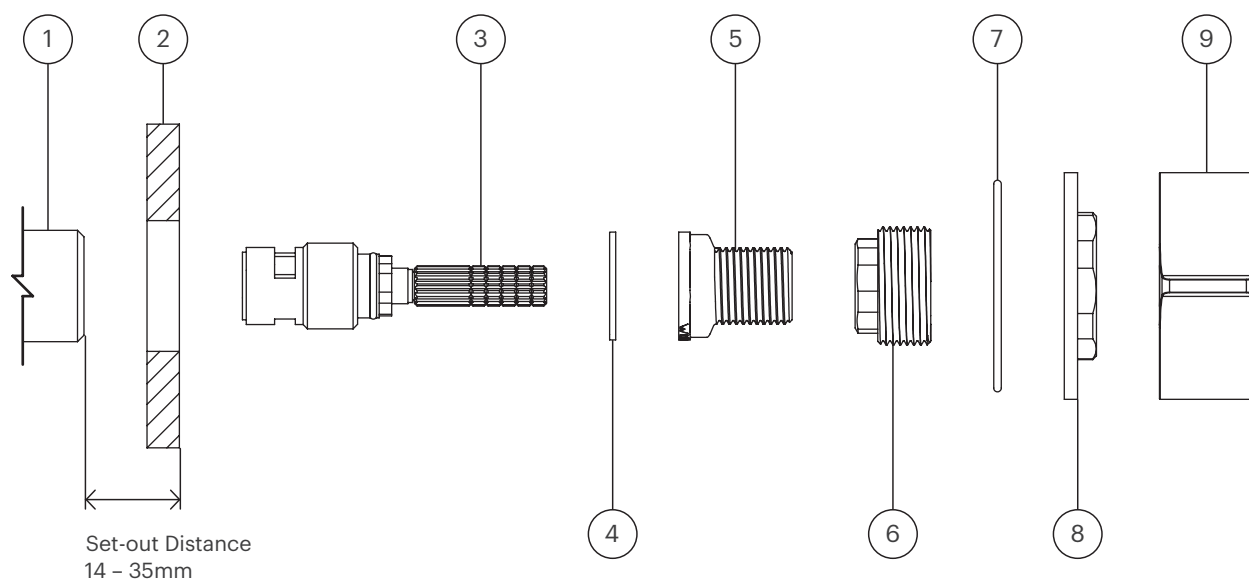


Eccentric by Rogerseller

Wall Top Assembly

Installation
Instructions

Specification



Note: For Retro-fit installations, make sure the set-out distance is within the range stated before commencing any work.

It is also critical that the breach is square to the finished wall.

Eccentric by Rogerseller Wall Top Assembly

3606013001 — Chrome

i Other finishes available

Parts List

1. Tap Body/Breach
2. Finished Wall
3. Spindle Assembly
4. Washer
5. Lock Nut
6. Adjustable Nut
7. O-ring
8. Wall Flange
9. Handle Assembly

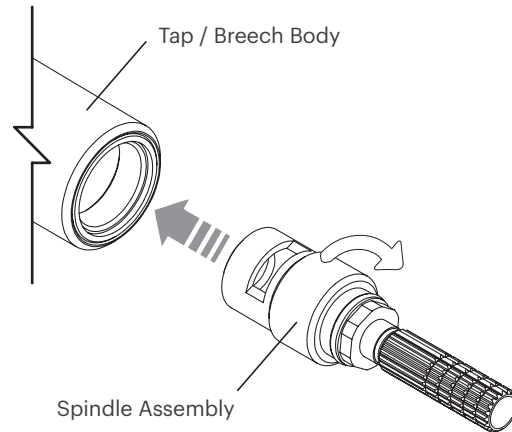
Rough-in

Step 1

If product is supplied assembled, separate parts as per Specification page.

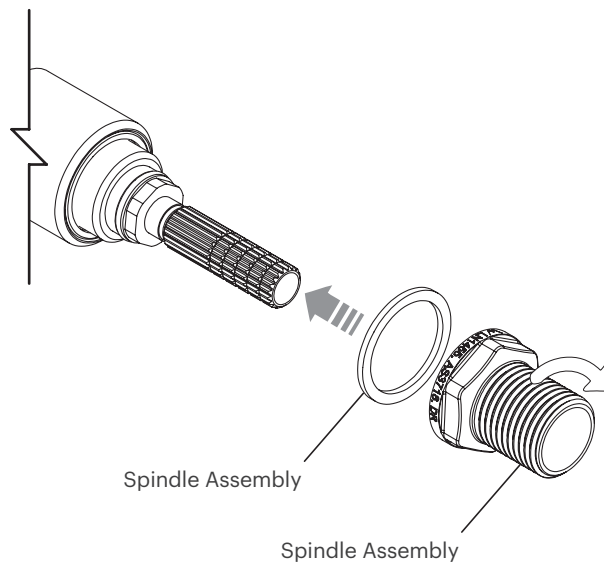
Step 2

Take the Hot and Cold Spindle Assemblies (7) and by hand, screw it into the appropriate tap body until it reaches the seat. Using a 15mm Spanner or Torque wrench just nip it up to approx. 8N/m.



Step 3

Place the Washer (6) then the Lock-nut (5) onto the Spindle Assembly (7) and tighten the Lock-nut using a 1" spanner. Tighten to approx. 25N/m.



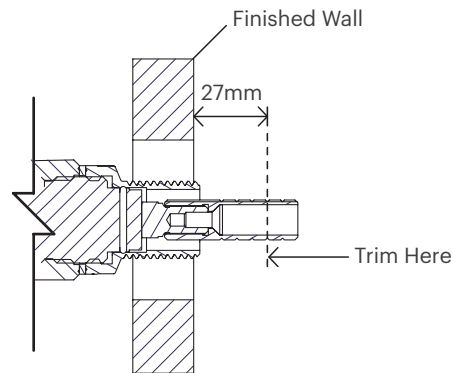
Installation

Step 1

From the front of the finished wall, accurately measure 27mm and trim the spline at this point.

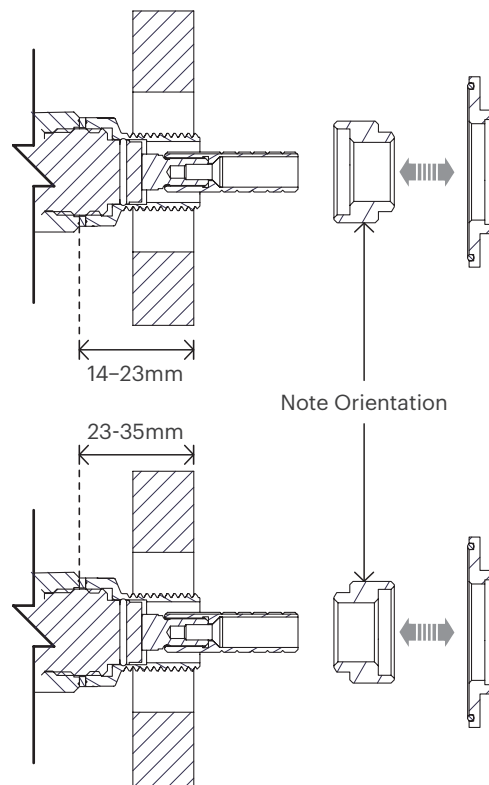
Note: Accuracy in this step is critical. If too much is trimmed off the spline the handle can rub on the wall plate.

Trimming of spline can also be left until pre handle fitment.



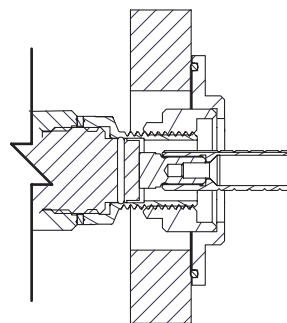
Step 2

The direction of the adaptor nut is dependent on the depth of breach. Use the illustration to the right as a guide.



Step 3

Once you have confirmed the orientation of the adaptor nut, screw it into the wall flange with o-ring until it bottoms out, then screw this onto the spindle assembly until the wall flange is firm against the finished wall as shown in the image to the right.



Installation

Step 4

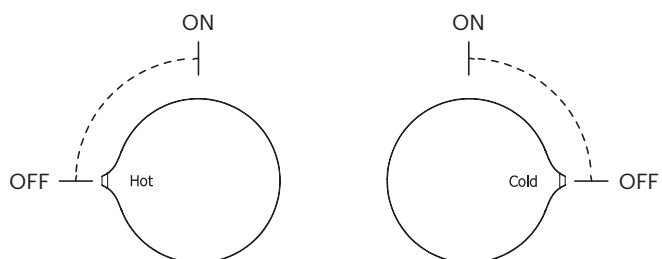
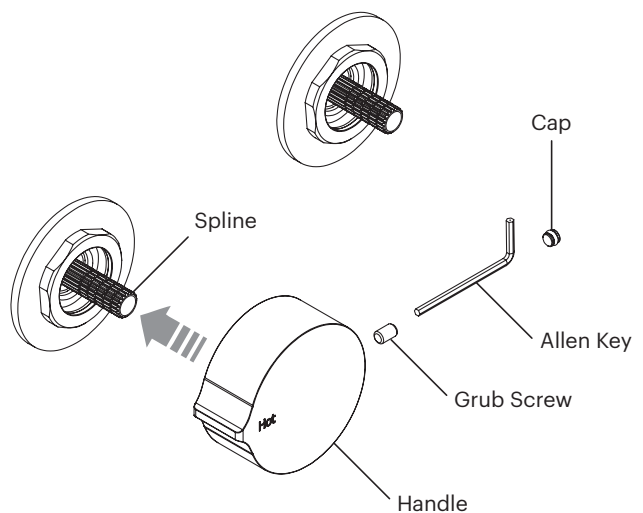
Take a handle assembly and if not already done so, separate the parts as per the image to the right.

Step 5

With the spindle in the off position, place the handle onto the appropriate spindle, engaging the spline until it comes to a stop. (there should be approx. 0.5 - 1.0mm gap between the handle and wall flange).

Step 6

Fix the handle in position using the grub screw and allen key supplied then insert the cap until it is just flush with the outer diameter of the handle.



Specifications

It is a requirement of state plumbing codes that licensed plumbers carry out all tapware installations. All installations must comply with the relevant requirements of AS/NZS3500 and local plumbing codes.

Pressure

Maximum Hydrostatic Pressure - 1000kpa

Recommended Maximum Hydrostatic Pressure - 500 kpa. (AS/NZS 3500)

Recommended Minimum Hydrostatic Pressure - 150 kpa.

Maximum Hydrostatic Pressure may be exceeded under test conditions only in accordance with AS/NZS 3500. Where hydrostatic pressure exceeds the maximum stated above, pressure limiting valves must be installed or warranty will be void.

Temperature

Maximum Water Temperature - 80°C

For optimum performance, Hot and Cold inlet water pressure should be equal.

Care and Maintenance

[1] Product should be inspected for surface damage prior to installation. [2] Cleaning and handling of all finishes must be performed carefully. [3] Clean products using a soft cloth with warm soapy water only. [4] Never use harsh detergents or abrasive cleaners as these will damage the product. [5] Water marks can be removed from Matt Finishes with an application of a carnauba wax based non-abrasive polish on a microfibre cloth. [6] Do not use undue pressure when cleaning and wipe in one direction only. [7] Contact with harsh chemicals such as hair dye, hair bleach etc will result in damage to the finish. [8] Tapware should never be installed using acetone silicones. [9] Avoid the use of wax based furniture creams as this can result in a build up of deposits which will detract from the appearance. [10] Damage to finishes arising from improper installation or post installation use or failure to observe the above care and cleaning instructions will void all warranty agreements.

Warranty

Rogerseller tapware, bathroom fittings and sanitaryware are covered by a five (5) year warranty from date of purchase. For full terms and conditions please refer to rogerseller.com.au

Dimensions are approximate. Information in this installation instruction is representative of the product available at the time of printing. Due to our policy of continuous product development, the design and specifications depicted are subject to change without notice. Please confirm all particulars with your client advisor prior to purchase.

rogerseller

RAM
TAPWARE

rogerseller.com.au