



## BAG VACUUM CLEANER INSTRUCTION MANUAL

220~240V  
50-60Hz

1800W

WHVC03SB



# CONTENTS

## SAFETY INFORMATION

Important Safety Instructions .....	1 - 2
-------------------------------------	-------

## SETUP AND USE

Parts and Features .....	3
Damage Prevention & Warnings .....	4
Preparing the Vacuum Cleaner .....	5
Assembling the Vacuum Cleaner .....	5
Operation .....	6

CLEANING AND CARE .....	7
-------------------------	---

TROUBLESHOOTING .....	8
-----------------------	---

WARRANTY .....	9 - 10
----------------	--------

Figures and illustrations in this User Manual are provided for reference only and may differ from actual product appearance.

Product design and specifications may be changed without notice.

# IMPORTANT SAFETY INSTRUCTIONS



## DANGER

**DANGER** – Immediate hazards which **WILL** result in severe personal injury or death.



## WARNING

**WARNING** – Hazards or unsafe practices which **COULD** result in severe personal injury or death.



## CAUTION

**CAUTION** – Hazards or unsafe practices which **COULD** result in minor personal injury.

## \*\*\*WARNING\*\*\*

**Read all instructions before using this appliance.**

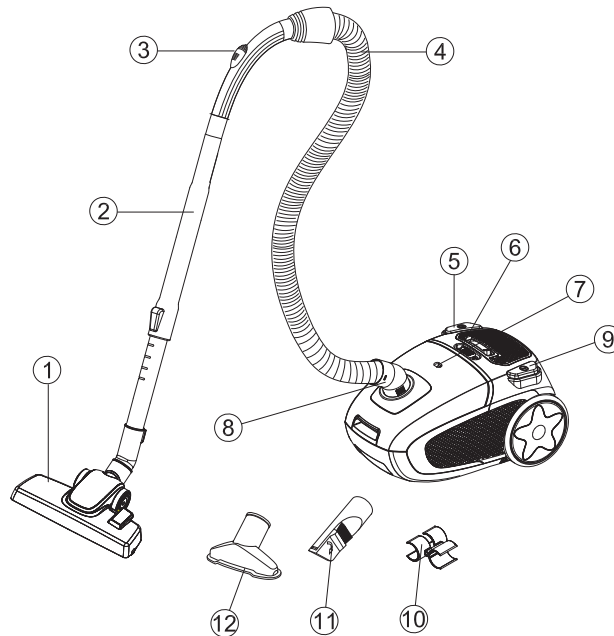
1. Do not leave vacuum cleaner unattended when plugged in. Unplug from outlet when not in use and before servicing.
2. Always turn the power off at the power outlet before you remove or insert the power plug. Remove by grasping the plug - do not pull on the cord.
3. To reduce the risk of electric shock, do not use outdoors or on wet surfaces.
4. Do not operate the vacuum cleaner if:
  - i) the cord or plug is split, melted or damaged.
  - ii) the vacuum cleaner has malfunctioned.
  - iii) the vacuum cleaner has been damaged in any manner.
  - iiii) the vacuum cleaner has been exposed to water or left outdoors.

If any of the above incidents occur, return your vacuum cleaner to the nearest authorized service center for examination, repair or adjustment.
5. Do not handle the A/C plug or vacuum cleaner with wet hands.
6. Do not place any objects into vents or openings in the vacuum cleaner. Do not use with vents or openings blocked. Keep free of dust, lint, hair and anything that may reduce the airflow to the vacuum cleaner.
7. Keep hair, loose clothing, fingers and all parts of body away from openings and moving parts.
8. Turn all controls off before unplugging.
9. Use extra care when cleaning on stairs.
10. This appliance is deemed for use indoors only.
11. Do not use to pick up flammable or combustible liquids, such as gasoline, chlorine, bleach or drain cleaner or use in areas where they may be present.
12. Do not under any circumstances immerse the power cord, mains plug or vacuum cleaner body in water or any other liquid.
13. Hold plug when rewinding onto cord reel. Do not allow plug to whip when rewinding.

## IMPORTANT SAFETY INSTRUCTIONS

14. This vacuum cleaner can be used by children aged from 12 years old and above and by persons with reduced physical, sensory or mental capabilities or lack of experience and knowledge if they have been given supervision or instruction by a person responsible for their safety, concerning use of the vacuum cleaner in a safe way and understand the hazards involved.
15. Children should be supervised to ensure that they do not play with the appliance.
16. Keep the vacuum cleaner out of reach of children less than 12 years old.
17. Do not pick up anything that is burning or smoking, such as cigarettes, matches, or hot ashes.
18. This appliance should not be used in a commercial or industrial environment.
19. Always use this appliance with a power outlet of the voltage (A / C only), marked on the rating label of the vacuum cleaner.
20. Do not use the vacuum cleaner for any purpose other than its intended use.
21. Do not use without dust bag and /or filters in place.
22. This appliance is not intended for use by persons (including children) with reduced physical, sensory or mental capabilities, or lack of experience and knowledge, unless they have been given supervision or instruction concerning use of the appliance by a person responsible for their safety.
23. Cleaning and user maintenance shall not be made by children without supervision.
24. Do not vacuum any flour, cement etc., in order to avoid overloading the appliance.
26. Always empty the dust bin and clean the filters after vacuuming carpets, fresheners, powders and fine dust. These products can clog the filters, reduce airflow and can ultimately cause damage to the vacuum cleaner. Failure to do so could cause permanent damage to the Vacuum cleaner.
27. Neither Westinghouse nor the retailer can accept any liability for damage to the product or personal injury resulting due to failure to observe the warnings and procedures included in this instruction manual.

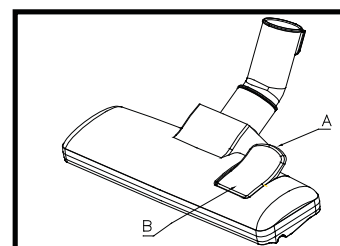
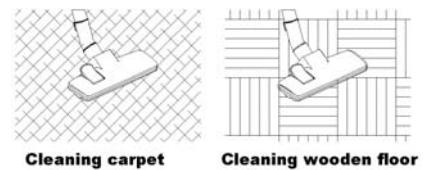
# PARTS AND FEATURES



- |    |                        |     |                        |
|----|------------------------|-----|------------------------|
| 1. | Floor nozzle           | 8.  | Suction hose connector |
| 2. | Extension tube         | 9.  | ON/OFF button          |
| 3. | Air slide              | 10. | Accessory holder       |
| 4. | Suction hose           | 11. | Crevice nozzle         |
| 5. | Cord rewinder button   | 12. | Upholstery nozzle      |
| 6. | Power adjustment slide |     |                        |
| 7. | Dust full indicator    |     |                        |

## NOTE: FLOOR NOZZLE

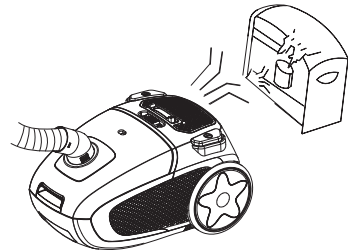
The floor nozzle has two settings. When cleaning hard surfaces (parquet flooring, flooring tiles, etc.), the nozzle brushes should be extended. When cleaning carpets and mats, the brushes should be retracted into the nozzle. Press the brush change button to switch between the two settings.



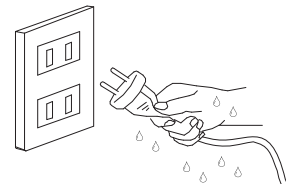
## DAMAGE PREVENTION & WARNINGS

**NOTE:** Switch off the vacuum cleaner immediately if the air intakes, the floor brushes or the telescope tube becomes blocked. Before starting the vacuum cleaner up again remove the substance causing the blockage.

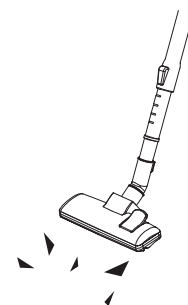
1. Never use the vacuum cleaner in the immediate vicinity of hot bodies and do not suck up hot objects such as cigarette ends or ashes.



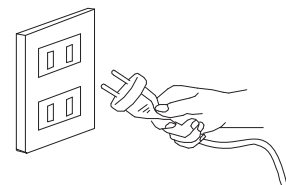
2. Ensure your hands are dry before handling the power cable, vacuum cleaner or plugging into a mains socket.



3. Remove large or sharp objects from the floor before using the vacuum cleaner to avoid any potential damage or blocking of the appliance.



4. When unplugging from the mains power supply, pull by the plug only. Do not pull on the power cord.

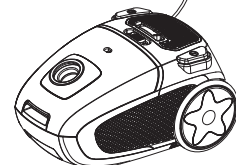
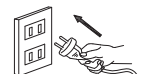
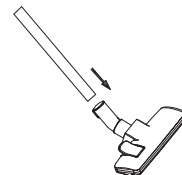
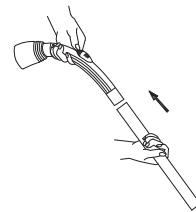
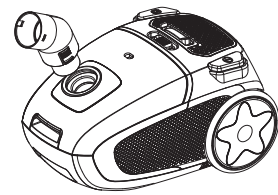


## PREPARING THE VACUUM CLEANER

1. Carefully unpack your vacuum cleaner.
2. Remove packaging around the vacuum cleaner, power cord and A/C plug. Do not remove warning labels.
3. Lay all components out on the floor ready for assembly.

## ASSEMBLING THE VACUUM CLEANER

1. Fit the hose to the vacuum cleaner by inserting the rotating hose connection into the vacuum cleaner until you hear a click. To remove the hose, press the buttons at the side of the hose connection and pull with an outward motion.
2. Assemble the extension tube and accessories:
  - i) Fit the telescopic tube onto the end of the hose.
  - ii) Fit the floor brush onto the telescope tube.
3. Extend a sufficient length of electric flexible power cable and plug into the mains socket. The yellow mark on the electric flex cable is the maximum length that must not be exceeded.
4. Your vacuum cleaner is now ready for use.



# OPERATION

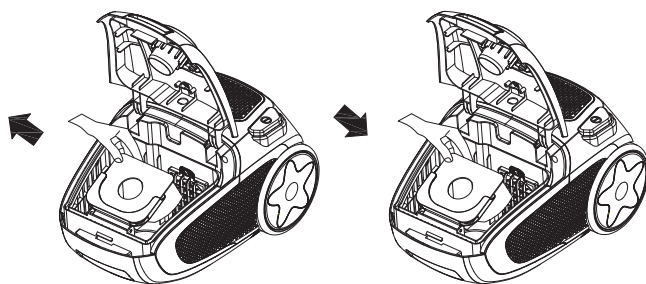
Please reference page 3 for part number references mentioned in the below instructions.

## Vacuum Cleaning

1. Before using the device first roll out a sufficient length of electric flex cable and plug into the mains socket. The yellow mark on the electric flex cable is the maximum length that must not be exceeded. To switch on the device press the ON/OFF button (9).
2. To rewind the power cable, press the cord rewriter button (5) with one hand and guide the cable with the other hand to ensure the cable does not whip causing damage.

## Emptying the dust bag

1. Switch off the vacuum cleaner and disconnect the plug from the mains. Always pull on the plug and not on the cable.
2. Remove the hose, open the bag cover by pushing the cover latch at the front of the vacuum cleaner body in an upwards motion.
3. Grasp the millboard at the top of the dust bag and carefully slide the bag out of the bag guides.
4. Hold the dust bag low over a dustbin and slide the locking strip off the base of the bag.
5. Shake out contents into dust bin and slide locking strip back onto the base bag.



6. Reinsert the dust bag into the vacuum cleaner bag guides and close the bag cover.

**NOTE:** If the vacuum's suction is reduced, this may be because the bag needs changing. Raise the floor nozzle off the floor, set the suction force regulation to MAX, switch on vacuum cleaner using the on/off button, and keep an eye on the bag change indicator. If it is red, the bag must be changed



## CLEANING & CARE

1. **⚠ WARNING:** Do not under any circumstances immerse the power cord, mains plug or vacuum cleaner body in water or any other liquid.
2. **⚠ WARNING:** Do not attempt to clean the unit whilst it is still plugged into the electrical power outlet. Always unplug the unit before cleaning.
3. Do not use harsh or abrasive cleaning agents. The outside surface may be wiped clean with a soft, damp cloth and dried thoroughly. If necessary, a mild dishwashing detergent may be applied to the cloth but not directly applied to the vacuum cleaner.

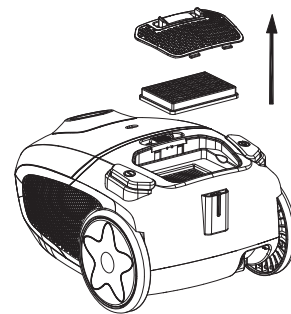
### Cleaning the motor filter

The motor filter can be found in the dust bag container. It protects the motor from dust and should be cleaned at least twice a year, when it is dirty, or if suction force is reduced.

1. Turn off and unplug the vacuum cleaner.
2. Remove the hose, open the bag cover by pushing the cover latch at the front of the vacuum cleaner body in an upwards motion.
3. Grasp the millboard at the top of the dust bag and carefully slide the bag out of the bag guides.
4. Remove the filter from the filter holder at the rear of the bag compartment.
5. Rinse the filter in warm water, and allow it to dry completely before reinserting into the vacuum cleaner. Do not use a hair dryer or similar to dry the filter.

### Cleaning the exhaust air filter

1. Turn off and unplug the vacuum cleaner.
2. Open the exhaust filter cover.
3. Rinse the filter under cold water and allow dry.
4. Reinsert the filter into the exhaust cavity.
5. Refit the exhaust filter cover.



# TROUBLESHOOTING

## BEFORE CALLING FOR SERVICE

If the appliance fails to operate:

1. Check to make sure the vacuum cleaner is plugged in correctly and securely. If it is not, remove the plug from the outlet, wait 10 seconds and plug it back in securely.
2. Check for a blown or tripped circuit breaker in your home. If these seem to be working correctly, test another appliance in the same outlet to ensure the outlet is working correctly.

**IF NONE OF THE ABOVE SOLVES THE PROBLEM, DO NOT TRY TO ADJUST OR REPAIR THE APPLIANCE YOURSELF.**

## CUSTOMER SERVICE

In the event you believe your device to be defective, please return it along with your sales receipt to the place of purchase for resolution.

For any enquiries, please call our service center on: Tel: 1300 883 109

## TROUBLESHOOTING

Troubleshoot your problem by using the chart below. If the unit still does not operate correctly, it may be defective.

TROUBLE	POSSIBLE CAUSE	POSSIBLE REMEDY
Vacuum cleaner does not turn on.	Vacuum cleaner is not plugged in.	Check that unit is plugged into a working power outlet and turned on.
Vacuum cleaner cutting out whilst in operation.	Vacuum cleaner overheating.	Clean filters as they may be blocked + check hoses for obstructions.
Vacuum cleaner is hot and no longer functions.	Vacuum cleaner has overheated.	Allow unit to cool for one hour and try again.
Vacuum cleaner is losing suction power.	Filters or hoses blocked.	Clean filters and check hoses for obstructions.

## LIMITED WARRANTY

1. Nothing in this Warranty affects the Consumer's rights under the Australian Consumer Law. The benefits to the Consumer under this Warranty are in addition to the rights and remedies of the buyer under any Consumer Guarantees. The Australian Consumer Law requires that we confirm that:  
  
Our goods come with guarantees that cannot be excluded under the Australian Consumer Law. You are entitled to a replacement or refund for a major failure and for compensation for any other reasonably foreseeable loss or damage. You are also entitled to have the goods repaired or replaced if the goods fail to be of acceptable quality and the failure does not amount to a major failure.
2. Subject to Clause 1, the Seller warrants that Westinghouse branded products will be free of manufacturing defects and will perform to the Seller's specifications subject to the following clauses.
3. The benefit of this Warranty extends only to the owner of the property in which the Products manufactured or supplied by the Seller are installed and used by the owner for the duration of the Warranty Period.
4. The Warranty commences on the date of the purchase of the product and continues for the benefit of the Owner for the Warranty Period. If within the Warranty Period a manufacturing defect is discovered in the Product, or the Product fails to perform to the Seller's specifications as a result of some defect in material or workmanship in the Product, then the Seller will at its own discretion:
  - a.) Repair or replace the Product at the cost of the Seller, including but not limited to labour and travel costs. Goods repaired or replaced under this Warranty will be warranted for the remaining period of the Warranty.
  - b.) Refund the purchase price paid by the consumer.
5. The Warranty does not apply to Product that :
  - a.) Has failed due to excessive wear and tear beyond what is considered to be reasonable.
  - b.) Has been misused or neglected.
  - c.) Has been damaged accidentally or by acts of God including fire and flooding.
  - d.) Has been used or operated contrary to operating or maintenance instructions.
  - e.) Has been damaged by the Consumer or a third party authorised to act for the consumer in transit from the Sellers store to the Consumer.
6. In order to make a claim under the Warranty, the Owner must, where possible return the goods to the Seller's store at the Owner's cost. Proof of purchase must be supplied in all cases.
7. The seller will examine any returned Products and if the Seller determines that there is an apparent defect through no fault of the Owner, the Seller will:
  - a.) Make note of the Owner's contact details including the Owner's telephone number which the owner can be contacted during business hours, postal address and e-mail address.

- b.) Make note of the defects reported by the Owner.
- c.) Take back the defective goods from the owner and determine within a reasonable time through dialogue with the Seller whether the goods are defective.
- d.) Advise the owner within a reasonable time frame whether it accepts or rejects the Product claim.
- e.) If the Seller accepts the return of the Product, the Seller must arrange to have
  - i) The Product repaired or,
  - ii) Replace the damaged or faulty Product or,
  - iii) Refund the purchase price.
- 8. The Seller will not accept any returned Product which has not been returned strictly in accordance with this Warranty.
- 9. For the purpose of this Warranty:
  - a.) Australian Consumer Law means the law as set out in Schedule 2 of the Competition and Consumer Act 2010 (Cth).
  - b.) Consumer means the Purchaser of goods from the seller.
  - c.) Consumer means a Consumer as that term is set out in section 3 of the Australian Consumer Law.
  - d.) Consumer Guarantees means the guarantees under the Australian Consumer Law.
  - e.) Implied terms means any guarantees, conditions, warranties or other terms implied by any Australian Commonwealth, State or Territory laws, (excluding the Australian Consumer Law) or the law of any other jurisdiction.
  - f.) Owner has the meaning set out in clause 3.
  - g.) Warranty means this warranty.
  - h.) Product means the Product/s bought by the Owner from the Seller that fall under this warranty.
  - i.) Warranty Period means:
 

i) In relation to Cast Iron Cookware:	3 Year Limited Warranty.
ii) In relation to Non-Stick Cookware:	3 Year Limited Warranty
iii) In relation to Cooking Utensils:	3 Year Limited Warranty
iv) In relation to Knives/Knife Block Sets:	3 Year Limited Warranty
v) In relation to Stainless Steel Cookware:	10 Year Limited Warranty
vi) In relation to Chopping boards:	1 Year Limited Warranty
vii) In relation to Small Appliances:	1 Year Limited Warranty



# Westinghouse

INNOVATION YOU CAN BE SURE OF

[www.westinghousesmallappliances.com.au](http://www.westinghousesmallappliances.com.au)

CUSTOMER SERVICE - AU: 1300 883 109

[info@westinghousesmallappliances.com.au](mailto:info@westinghousesmallappliances.com.au)

CUSTOMER SERVICE - NZ: 0508 776 546

[info@westinghousesmallappliances.co.nz](mailto:info@westinghousesmallappliances.co.nz)

IMPORTED AND DISTRIBUTED BY RVM AUSTRALIA PTY LTD.  
11 Tamara Drive, Cockburn Central, WA 6164  
MADE IN CHINA

© 2020 RVM AUSTRALIA PTY LTD. ALL RIGHTS RESERVED.

™, WESTINGHOUSE, and INNOVATION YOU CAN BE SURE OF  
are trademarks of Westinghouse Electric Corporation.

Used under license by RVM AUSTRALIA PTY LTD. ALL RIGHTS RESERVED.