

Instructions Manual

SHB450X – SHB600X – SHB900X

INDEX

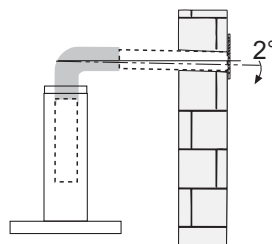
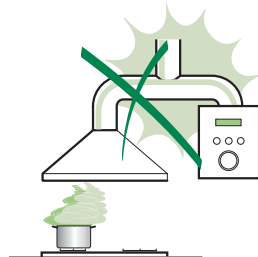
RECOMMENDATIONS AND SUGGESTIONS	3
CHARACTERISTICS	4
INSTALLATION.....	5
USE	8
MAINTENANCE	9

RECOMMENDATIONS AND SUGGESTIONS

⚠ The Instructions for Use apply to several versions of this appliance. Accordingly, you may find descriptions of individual features that do not apply to your specific appliance.

INSTALLATION

- The manufacturer will not be held liable for any damages resulting from incorrect or improper installation.
- The minimum safety distance between the cooker top and the extractor hood is 650 mm (some models can be installed at a lower height, please refer to the paragraphs on working dimensions and installation).
- Check that the mains voltage corresponds to that indicated on the rating plate fixed to the inside of the hood.
- For Class I appliances, check that the domestic power supply guarantees adequate earthing. Connect the extractor to the exhaust flue through a pipe of minimum diameter 120 mm. The route of the flue must be as short as possible.
- Do not connect the extractor hood to exhaust ducts carrying combustion fumes (boilers, fireplaces, etc.).
- If the extractor is used in conjunction with non-electrical appliances (e.g. gas burning appliances), a sufficient degree of aeration must be guaranteed in the room in order to prevent the backflow of exhaust gas. The kitchen must have an opening communicating directly with the open air in order to guarantee the entry of clean air. When the cooker hood is used in conjunction with appliances supplied with energy other than electric, the negative pressure in the room must not exceed 0,04 mbar to prevent fumes being drawn back into the room by the cooker hood.
- In the event of damage to the power cable, it must be replaced by the manufacturer or by the technical service department, in order to prevent any risks.
***WARNING:** Failure to install the screws or fixing device in accordance with these instructions may result in electrical hazards."

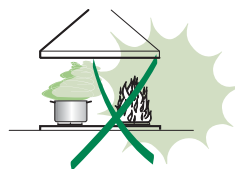



USE

- The extractor hood has been designed exclusively for domestic use to eliminate kitchen smells.
- Never use the hood for purposes other than for which it has been designed.
- Never leave high naked flames under the hood when it is in operation.
- Adjust the flame intensity to direct it onto the bottom of the pan only, making sure that it does not engulf the sides.
- Deep fat fryers must be continuously monitored during use: overheated oil can burst into flames.
- Do not flambé under the range hood: risk of fire
- This appliance is not intended for use by persons (including children) with reduced physical, sensory or mental capabilities, or lack of experience and knowledge, unless they have been given supervision or instruction concerning use of the appliance by a person responsible for their safety.
- Children should be supervised to ensure that they do not play with the appliance.
- ***WARNING:** Accessible parts may become hot when used with cooking appliances."

MAINTENANCE

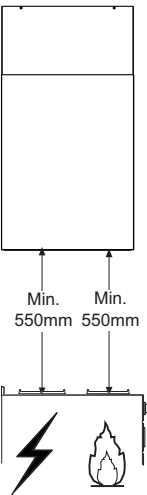
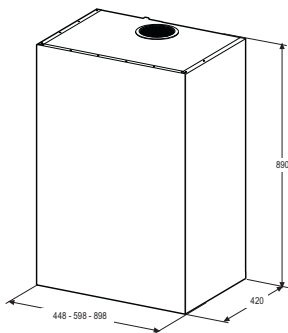
- Switch off or unplug the appliance from the mains supply before carrying out any maintenance work.
- Clean and/or replace the Filters after the specified time period (Fire hazard).
- Clean the hood using a damp cloth and a neutral liquid detergent.



The symbol  on the product or on its packaging indicates that this product may not be treated as household waste. Instead it shall be handed over to the applicable collection point for the recycling of electrical and electronic equipment. By ensuring this product is disposed of correctly, you will help prevent potential negative consequences for the environment and human health, which could otherwise be caused by inappropriate waste handling of this product. For more detailed information about recycling of this product, please contact your local city office, your household waste disposal service or the shop where you purchased the product.

CHARACTERISTICS

Dimensions

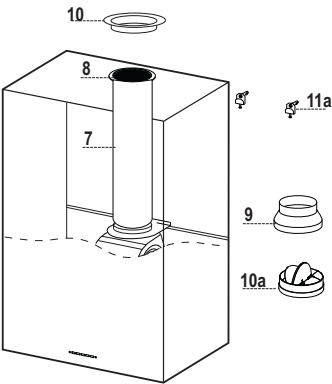


Components

Ref.	Q.ty	Product components
1	1	Hood Body complete with: Controls, Light, Suction Unit, Filters, Lower Duct
7	1	PVC Pipe (fitted)
8	1	Inclinable grid (fitted)
9	1	Reduction flange \varnothing 150-120 mm
10	1	Metal cover
10a	1	Dumper

Ref.	Q.ty	Assembly components
11a	2	SB 12/10 Plugs

Q.ty	Documents
1	Instruction Manual

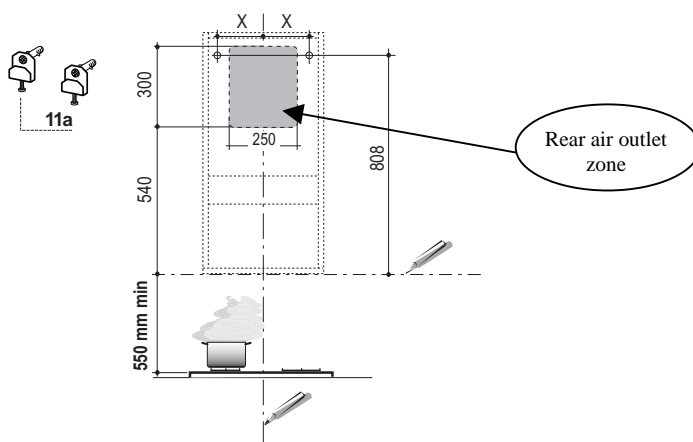


INSTALLATION

Boring the wall

If you want to use the hood in suction version with the air outlet at the back of the hood, make sure to follow the indications given below in the drawing for a correct boring operation of the air outlet opening.

Type Hood	45	60	90
X	180	240	390



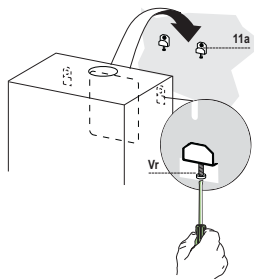
When installing the hood in recycling version it has to be taken into consideration that space remaining between the hood and the upper limit (ceiling or self) is at least 8-10 cm.

On the wall, trace:

- a vertical line up to the ceiling or top limit, at the centre of the area where you intend to fit the hood;
- a horizontal line at: 550 mm min. above the cooking hob;
- As shown, mark a reference point at 808 mm above the horizontal reference line, and at X mm (X= see table in figure) to the right of the vertical reference line.
- Repeat this operation on the opposite side, checking levelling.
- Drill the points marked using a $\varnothing 12$ mm bit
- Insert plugs with screws and brackets **11a** in the holes then tighten them.

Hood body assembly

- Adjust the two screws **Vr** of brackets **11a**, by just placing them in position.
- Hook the hood body to the two brackets **11a**.
- Pull the Comfort Panel to open it, remove the filters one by one, push them towards the rear part of the unit and pull downwards at the same time .
- From inside the hood body, tighten the screws **Vr** to level the body.



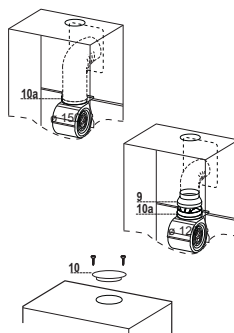
Connection

AIR OUTLET IN A DUCTING HOOD VERSION

When installing the hood in ducting version, basing on the installer's choice, a rigid or a flexible pipe with a \varnothing 150 or 120 mm is used in order to connect the hood to the air outlet piping. The pipe connection can be made on the upper part or on the rear side of the hood.

Before connecting the hood to the air outlet ducting remove the lateral air outlet grid **8** and the plastic tube **7**. The adapting flange **9** has to be removed only in case the connecting diameter is 150.

To install the dumper **10a** on the hood body outlet.

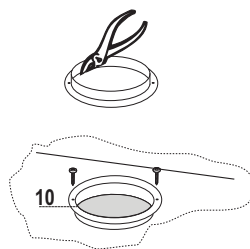


REAR AIR OUTLET

- When drilling the air outlet hole in the wall proceed in accordance with the scheme in the part concerning the wall drilling.
- Use a pair of tongs when breaking the rear air outlet hole in the wall.
- In case the connection is made by using a \varnothing 120 mm pipe insert the reduction flange **9** on the Dumper **10a**.
- Fix the pipe with an adequate quantity of pipe clamps. This material is not supplied together with the hood.
- Remove the charcoal filter if present.
- Fix the metal cover **10** to the upper air outlet hole of the hood by using the screws supplied.

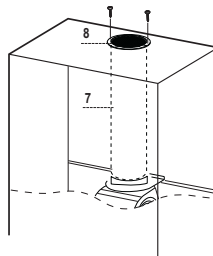
UPPER AIR OUTLET

- In case the connection is made by using a \varnothing 120 mm pipe insert the reduction flange **9** on the Dumper **10a**.
- Use a pair of tongs when removing the central part of the metal cover **10**. Fix the cover to the air outlet hole of the hood by using the screws supplied.
- Fix the pipe with an adequate quantity of pipe clamps. This material is not supplied together with the hood.
- Remove the charcoal filter if present.



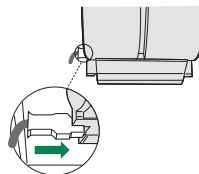
AIR OUTLET IN A RECYCLING HOOD VERSION

- In case the components requested for the recycling functioning have been removed earlier these have to be positioned again.
- Put the plastic tube onto the flange **7**.
- Place the air outlet grid **8** on the air outlet. Make sure that the position of the grid is correct.
- Make sure that charcoal filters have been placed inside the hood.

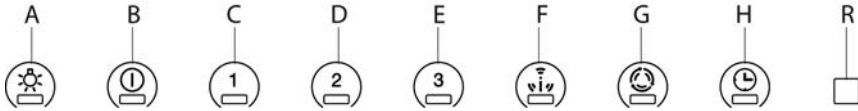


ELECTRICAL CONNECTION

- Connect the hood to the mains through a two-pole switch having a contact gap of at least 3 mm.
- Remove the grease filters (see paragraph Maintenance) being sure that the connector of the feeding cable is correctly inserted in the socket placed on the side of the fan.



USE



Control panel

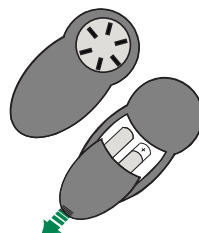
Button	Function	Led
A	Turns the lighting system on and off at maximum intensity.	On/Off
	Turns the lighting system on and off in Courtesy Light mode.	On/Off
B	Turns the Motor off.	The buttons turn light up one at a time in cycle.
	Press and hold for approximately 5 seconds to Lock / Unlock the Keyboard, for example in order to clean the surface.	
C	Turns the Motor on at Speed one.	On/Off
D	Turns the Motor on at Speed two.	On/Off
E	Turns the Motor on at Speed three.	On/Off
F	Activates/Deactivates intensive speed from any other speed, including motor off. This speed is set to operate for 10 minutes, after which the system returns to the speed that was set before. Suitable to deal with maximum levels of cooking fumes. Can also be deactivated by pressing button B .	Flashes once a second.
	Press and hold the button for approximately 5 seconds, with all the loads turned off (Motor and Lights), to turn the Activated Charcoal Filter alarm on/off.	Button B (Flashes twice)-Alarm Activated. Button B (Flashes once)-Alarm Deactivated.
G	24H function Turns the motor On/Off at speed one and allows recirculation for 10 minutes every hour. It cannot be activated if the Intensive or Delay functions are in use.	On/Off
	When the filters alarm is triggered, the alarm can be reset by pressing and holding this button for approximately 5 seconds. These indications are only visible when the motor is turned off.	B flashes three times. When the procedure terminates, the indication shown previously turns off: Button G flashes , indicating the need to wash the metal grease filters. The alarm is triggered after the Hood has been in operation for 100 working hours. Button G flashes , indicating the need to change the activated charcoal filters, and also to wash the metal grease filters. The alarm is triggered after the Hood has been in operation for 200 working hours.
H	Delay function Activates/Deactivates automatic switch-off with a 30' delay. Suitable to complete elimination of residual odours. Can be activated from any position. It cannot be activated if the Intensive or 24H functions are in use.	On/Off
	Press and hold the button for approximately 5 seconds, with all the loads turned off (Motor and Lights), to turn the Remote control on/off.	Button B (Flashes twice)-Remote control Activated. Button B (Flashes once)-Remote control Deactivated.
R	Remote control receiver.	

MAINTENANCE

REMOTE CONTROL (OPTIONAL)

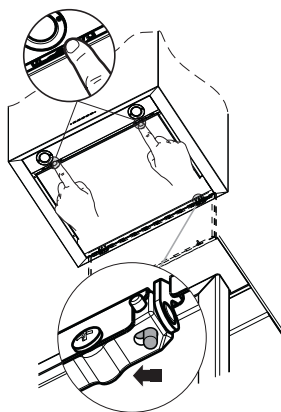
The appliance can be controlled using a remote control powered by a 1.5 V carbon-zinc alkaline batteries of the standard LR03-AAA type (not included).

- Do not place the remote control near to heat sources.
- Used batteries must be disposed of in the proper manner.



Cleaning the Comfort Panels

- Pull the Comfort Panel to open it.
- Disconnect the panel from the hood canopy by sliding the fixing pin lever.
- The comfort panel must never be washed in a dishwasher.
- Clean the outside by using a damp cloth and neutral liquid detergent.
- Clean the inside as well by using a damp cloth and neutral detergent; do not use wet cloths or sponges, or jets of water; do not use abrasive substances.
- When the above operation has been completed, hook the panel back to the hood canopy and close it by turning the knob in the opposite direction.

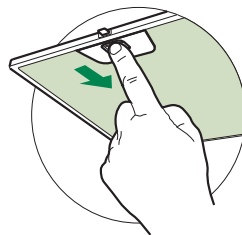


Metal grease filters

They can be washed in the dishwasher, and need to be cleaned whenever Button **G** flashes or at least once every 2 months use, or more frequently if use is particularly intensive.

Resetting the alarm signal

- Turn the Lights and the Suction motor off, then disable the 24h function, if enabled.
- Press button **G** and hold for approximately 5 seconds (See paragraph on Use).



Cleaning the filters

- Pull the comfort panels to open them.
- Remove the filters one by one pushing them towards the back side of the hood unit and simultaneously pulling downwards.
- Any kind of bending of the filters has to be avoided when washing them. Before fitting them again into the hood make sure that they are completely dry. (The colour of the filter surface may change throughout the time but this has no influence to the filter efficiency).
- When fitting the filters into the hood pay attention that they are mounted in correct position the handle facing outwards.
- Close the comfort panel.

Activated Charcoal Filter (Recirculation Version)

This cannot be washed or regenerated, and must be changed when **G** starts to flash, or at least once every 4 months. The Alarm signal, if it has been activated, only appears when the Suction motor is turned on.

Activating the alarm signal

- In Recirculation Version Hoods, the Filter Saturation Alarm must be activated on installation or at a later date.
- Turn the Lights and the Suction Motor off.
- Press **F** and hold for approximately 5 seconds:
 - **Button B** flashes twice -- A.C. Filter saturation alarm **ACTIVATED**
 - **Button B** flashes once -- A.C. Filter saturation alarm **DEACTIVATED**

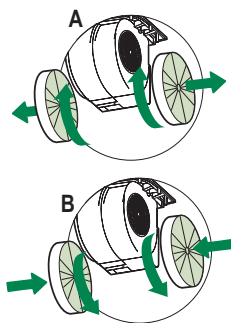
CHANGING THE ACTIVATED CHARCOAL FILTER

Resetting the alarm signal

- Turn the Lights and the Suction Motor off.
- Press button **G** and hold for approximately 5 seconds (See paragraph on Use).

Changing the Filter

- Open the comfort panels pulling them downwards.
- Remove grease filters.
- Remove the saturated activated charcoal filters, as indicated (A).
- Fit the new filters, as indicated (B).
- Replace the metal grease filters.
- Close the comfort panels.



Lighting

LIGHT REPLACEMENT

20 W halogen light.

- Remove the 2 screws fixing the Lighting support, and pull it out of from the Hood.
- Extract the lamp from the Support.
- Replace with another of the same type, making sure that the two pins are properly inserted in the lamp holder socket holes.
- Refit the Support, fixing it in place with the two screws removed as above.

