



SC07H40\*\*V SERIES  
SC15H40\*\*V SERIES  
SC15K41\*\*\*\* SERIES

# Vacuum Cleaner user manual

## 03 Safety information

## 06 Assembling

Name of each part / Where to use the brushes

## 08 Using the vacuum cleaner

Using the handle control / Using the body

## 09 Cleaning and maintaining

Cleaning the outlet filter / Cleaning the pipe /  
Cleaning the hose / Cleaning the dust filter /  
Cleaning the dust bin / Maintaining the mini  
turbo / Cleaning the power pet / Cleaning  
the 2-step brush / Cleaning the parquet  
master / Cleaning the anti tangle tool /  
Storing the vacuum cleaner

## 14 Notes and cautions

In use / About storing / Cleaning and maintenance

## 15 Troubleshooting

- \* Before operating this unit, please read the instructions carefully.
- \* For indoor use only.

**English**

imagine the possibilities

Thank you for purchasing a Samsung product.

**SAMSUNG**

# Safety information

## SAFETY INFORMATION

---



- Before operating the appliance, please read this manual thoroughly and retain it for your reference.



- Because these following operating instructions cover various models, the characteristics of your vacuum cleaner may differ slightly from those described in this manual.

### CAUTION/WARNING SYMBOLS USED

---



Indicates that a danger of death or serious injury exists.



Indicates that a risk of personal injury or material damage exists.

### OTHER SYMBOLS USED

---



Represents something you must follow.



This vacuum cleaner is designed for household use only.

Do not use this vacuum cleaner to clean building waste and debris, toner of laser printer.

Regularly keep the filters in clean conditions to prevent of collecting fine dust in them.

Dry carpet cleaners or fresheners, powders and fine dust such as flour should be only vacuumed in very small amounts.

Always clean the dust bin & filters after vacuuming them.

Do not use this vacuum cleaner with any of the filters or dust bin removed.

Do not use worn, deformed or damaged filters.

Always install the filters in the correct position as shown in this manual.

Failure to meet these requirements could cause damage to the internal parts and void your warranty. Never twist micro filter after washing. It can be a reason of deformation or damage filter.

If filter deformed or damaged please replace the filter (it can be a reason of penetration of dust and debris into motor).

Please insert filter properly without gap between filter and cover filter (it can be a reason of penetration of dust and debris into motor).

## IMPORTANT SAFEGUARDS

---

### GENERAL

- Read all instructions carefully. Before switching on, make sure that the voltage of your electricity supply is the same as that indicated on the rating plate on the bottom of the cleaner.

- **WARNING :** Do not use the vacuum cleaner when rug or floor is wet.
- Close supervision is necessary when any appliance is used by or near children. Do not allow the vacuum cleaner to be used as a toy. Do not allow the vacuum cleaner to run unattended at any time. Use the vacuum cleaner only for its intended use as described in these instructions.
- Do not use the vacuum cleaner without a dust bin.
- Empty the dust bin before it is full in order to maintain the best efficiency.
- Do not use the vacuum cleaner to pick up matches, live ashes or cigarette butts. Keep the vacuum cleaner away from stoves and other heat sources. Heat can deform and discolour the plastic parts of the unit.
- Avoid picking up hard, sharp objects with the vacuum cleaner as they may damage the cleaner parts.  
Do not stand on the hose assembly. Do not put weight on the hose.  
Do not block the suction or the exhaust port.
- Switch the vacuum cleaner off on the body of the machine before unplugging from the electrical outlet. Disconnect the plug from the electrical outlet before emptying the dust bin. To avoid damage, please remove the plug by grasping the plug itself, not by pulling on the cord.
- This appliance can be used by children aged from 8 years and above and persons with reduced physical, sensory or mental capabilities or lack of experience and knowledge if they have been given supervision or instruction concerning use of the appliance in a safe way and understand the hazards involved. Children shall not play with the appliance. Cleaning and user maintenance shall not be made by children without supervision.
- Children should be supervised to ensure that they do not play with the appliance.
- The plug must be removed from the socket outlet before cleaning or maintaining the appliance.
- The use of an extension cord is not recommended.
- If your vacuum cleaner is not operating correctly, switch off the power supply and consult an authorized service agent.
- If the supply cord is damaged, it must be replaced by the manufacturer or its service agent or a similarly qualified person in order to avoid a hazard.
- Don't carry the vacuum cleaner by holding the hose. Use the handle on the vacuum cleaner set.
- Unplug the cleaner when not in use. Turn off the power switch before unplugging.
- Do not use to suck up water.
- Do not immerse in water for cleaning.
- The hose should be checked regularly and must not be used if damaged.
- Please contact the manufacturer or service center for a replacement.

# Safety information



## WARNING

### Power related

- ▶ Please prevent any risk of electric shock or fire.
  - Do not damage the power cord.
  - Do not pull the power cord too hard or touch the power plug with wet hands.
  - Do not use a power source other than the national rated voltage and also do not use a multi outlet to supply power to number of devices at the same time.
  - Do not use a damaged power plug, power cord or a loose socket outlet.
  - Turn off the power before connecting or disconnecting the power plug to the socket outlet and make sure your fingers don't come in contact with the pin of the power plug.
  - Do not disassemble or modify the vacuum cleaner. When power cord is damaged, contact the manufacturer or service center to get it replaced by certified repairman.
  - Clean dust or any foreign matters on the pin and contact part of the power plug.
- ▶ If there's any gas leak or when using combustible sprays such as a dust remover, do not touch the socket outlet and open the windows to ventilate the room.
  - There is a risk of explosion or fire.



## WARNING

### In use and maintenance

- ▶ Do not use this product outdoors since it's designed for household use only.
  - There is a risk of malfunction or damage.
  - \* Outdoor cleaning : A stone, Cement
  - \* A billiard room : Powder of a chalk
  - \* An aseptic room of a hospital
- ▶ Do not use the vacuum cleaner to suck up liquids(such as water), blades, pins or embers.
  - There is a risk of malfunction or damage.
- ▶ Be sure children do not touch the vacuum cleaner when you use it.
  - The children can get burn if the body is overheated.
- ▶ Do not mount or make any physical impacts on the body.
  - It may result in injury or damage.
- ▶ Use the carrying handle for lifting or carrying the vacuum cleaner.
- ▶ Do not lift or carry the vacuum cleaner putting a brush in the groove for storage.
- ▶ Use a dry cloth or towel to clean the body and make sure to unplug the vacuum cleaner before cleaning. Do not spray water directly or use volatile materials(such as benzen, thinner or alcohol) or combustible sprays(such as a dust remover) for cleaning.
  - If water or other liquid gets into the product and cause malfunction, turn off the power button on the body, unplug the power plug and then consult a service center.



- ▶ Do not use alkaline or industrial detergents, air fresheners or (acetic) acids to clean the washable parts of the vacuum cleaner.(Refer to the following table.)
  - It may cause damage, deformation or discoloration of the plastic parts.

The washable parts		Dust bin of the body, Dust filter, Sponge filter,
Available detergent	Neutral detergent	Kitchen cleaner
Unavailable detergent	Alkaline detergent	Bleach, Mold cleaner, etc.
	Acid detergent	Paraffin oil, Emulsifier, etc.
	Industrial detergent	NV-I, PB-I, Opti, Alcohol, Acetone, Benzene, Thinner, etc.
	Air freshener	Air freshener(Spray)
	Oil	Animal or vegetable oil
	Etc.	Edible acetic acid, Vinegar, Glacial acetic acid, etc.

- ▶ Thermal protector :  
This vacuum cleaner has a special thermostat that protects the motor in case of its overheating. If the vacuum cleaner suddenly shuts off, turn off the switch and unplug the vacuum cleaner. Make sure that there is power in the socket. To avoid electric shock, please contact a qualified electrician. Check the vacuum cleaner for possible source of overheating such as a full dust bin, a blocked hose, pipe, or clogged filter. If these conditions are found, fix them and wait at least 30 minutes before attempting to use the vacuum cleaner. After the 30 minute period, plug the vacuum cleaner back in and turn on the switch. If the vacuum cleaner still does not run, contact a service engineer.

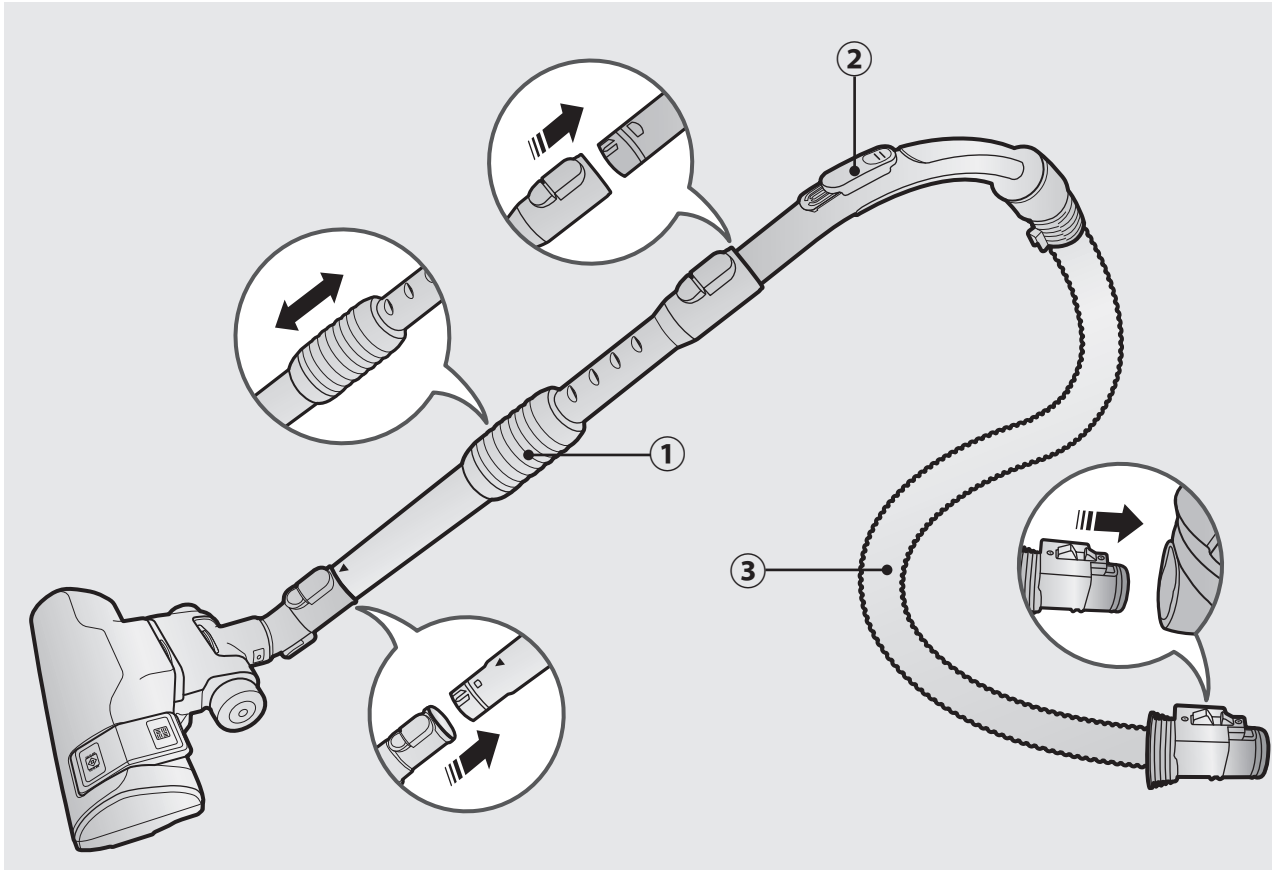


## CAUTION

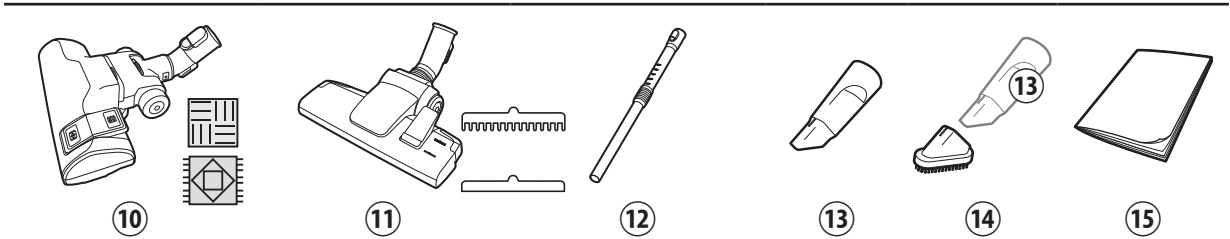
## In use

- ▶ Do not use the pipe for anything other than its intended purpose.
  - It may result in injury or damage.
- ▶ When you lift up the handle of dust bin while using the vacuum cleaner, safety device will be activated and there might be changes in operating noise.
  - Operating noise may change when you hold the handle of the dust bin while using the vacuum cleaner, but the circular tube on bottom of the dust bin prevents dust from spilling out.
- ▶ Unplug the vacuum cleaner if you do not use it for a long time.
  - It may cause electric shock or fire.
- ▶ Do not pull the power cord beyond the yellow mark and hold the power cord with one hand when rewinding it
  - If you try to pull it beyond the yellow mark, power cord can be damaged and if you don't hold the power cord while rewinding, it may lose control and cause injury or damage to people or objects around it.
- ▶ If any abnormal sounds, smells or smoke come from the vacuum cleaner, immediately unplug the power plug and contact a service center.
  - There is a risk of fire or electric shock.
- ▶ Do not use the vacuum cleaner in any places near heating appliances(such as stove), combustible spray or flammable materials.
  - It may cause fire or deformation of the product.

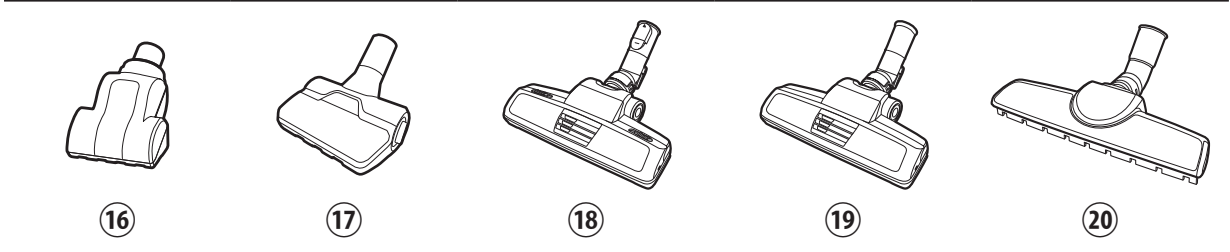
# Assembling







## Accessories

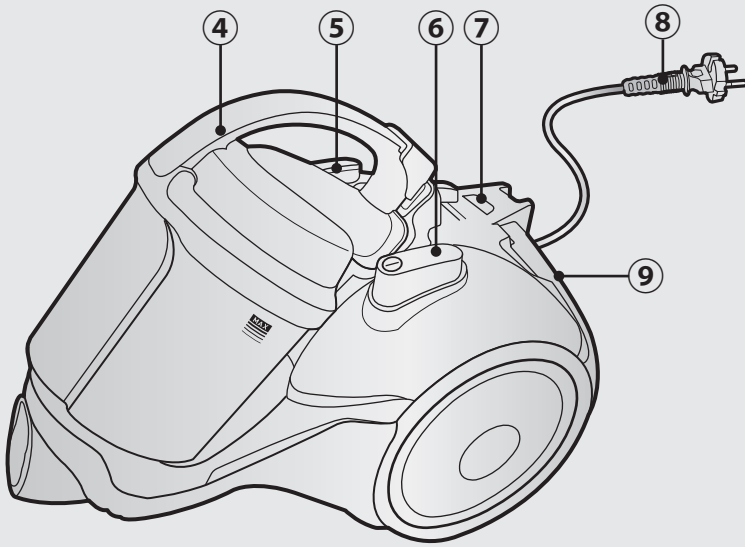


## Options



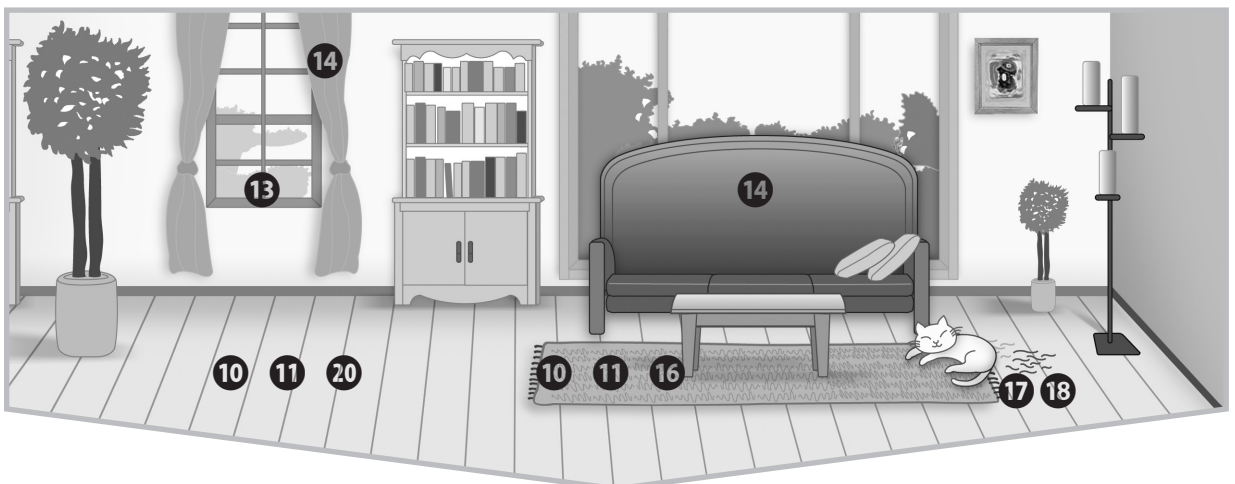
\*   Floor /   Carpet

## Name of each part



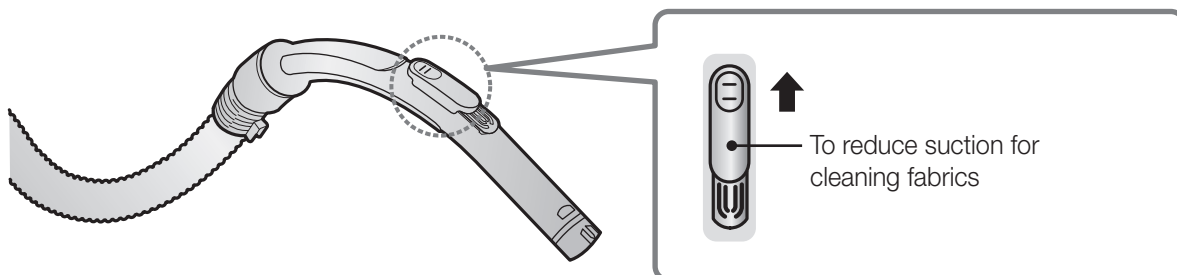
- ① Pipe (SC07H40\*\*V Series)
- ② Handle control
- ③ Hose
- ④ Dust bin
- ⑤ Cord rewind button
- ⑥ Power button
- ⑦ Filter light
- ⑧ Power cord
- ⑨ Outlet filter
- ⑩ 2-step brush (SC07H40\*\*V Series)
- ⑪ 2-step brush (SC15H40\*\*V Series / SC15K41\*\*\*\* Series)
- ⑫ Pipe (SC15H40\*\*V Series / SC15K41\*\*\*\* Series)
- ⑬ 2-in-1 accessory (Crevice tool)
- ⑭ 2-in-1 accessory (Dusting brush)
- ⑮ User manual
- ⑯ Mini turbo
- ⑰ Anti-Tangle tool
- ⑱ Power pet
- ⑲ Power pet
- ⑳ Parquet master

## Where to use the brushes

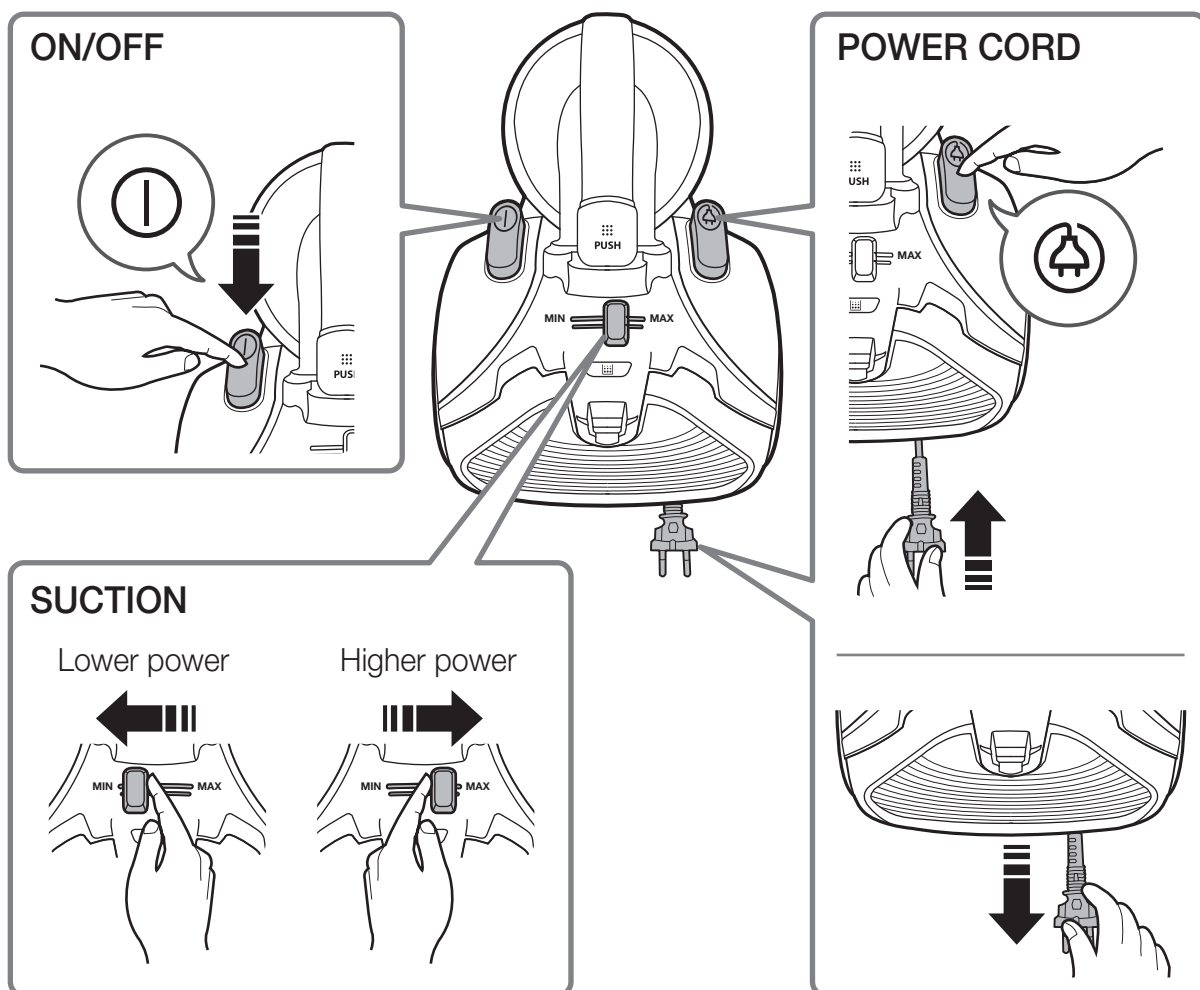


# Using the vacuum cleaner

## Using the handle control

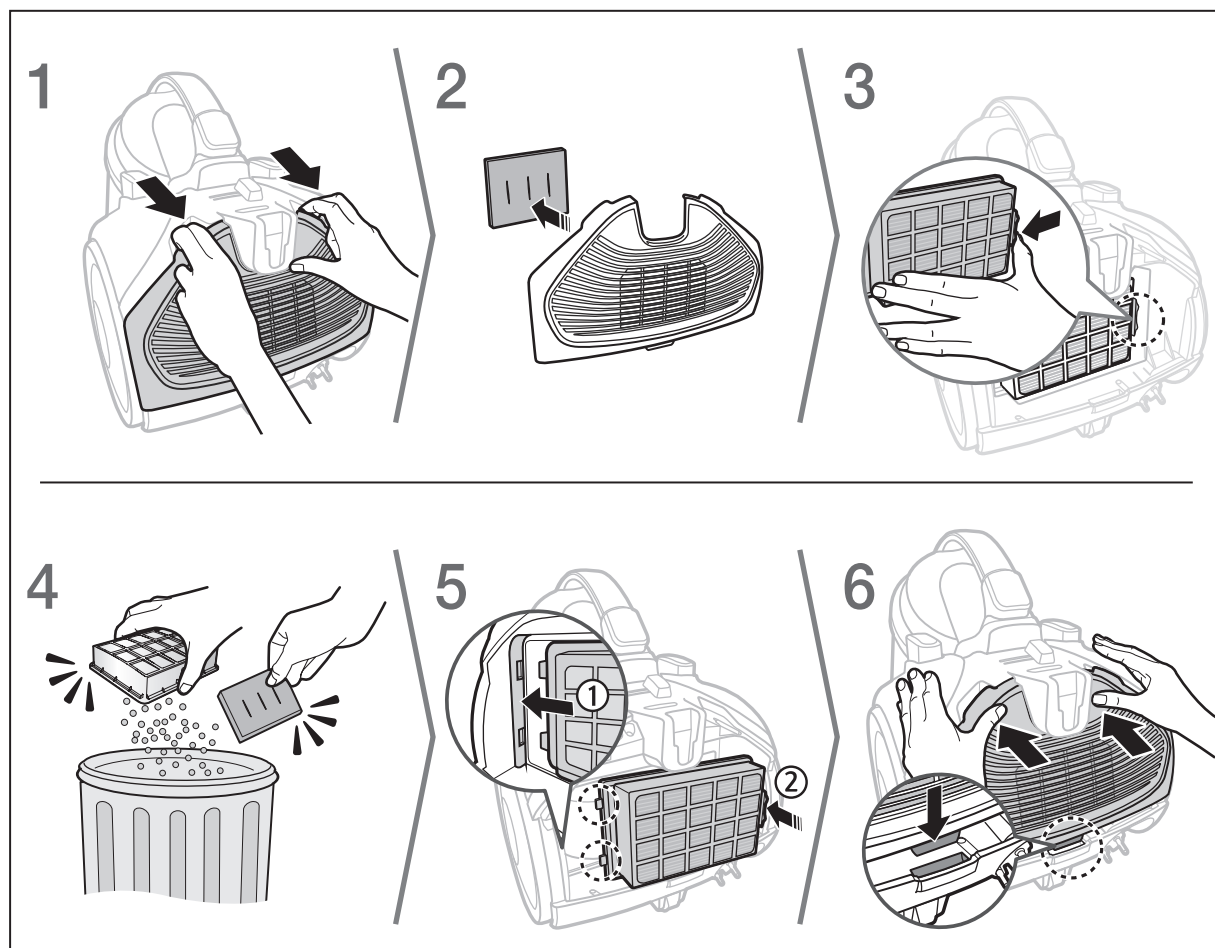


## Using the body

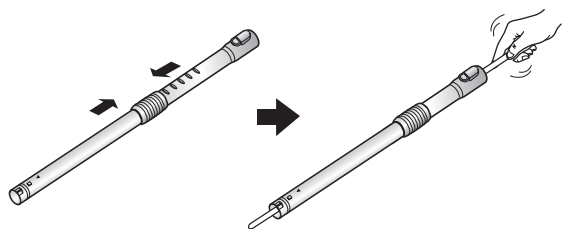


# Cleaning and maintaining

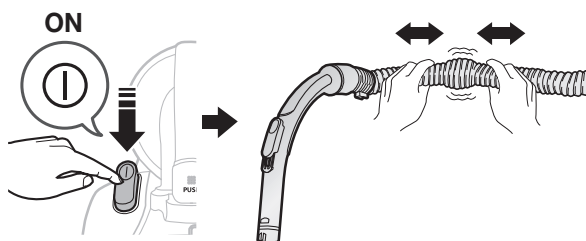
## Cleaning the outlet filter



## Cleaning the pipe

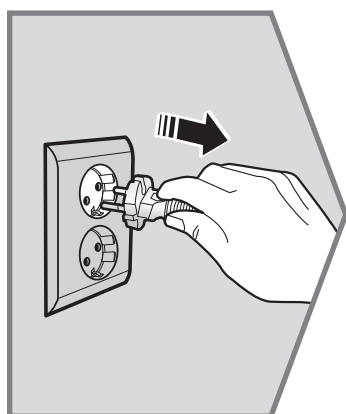
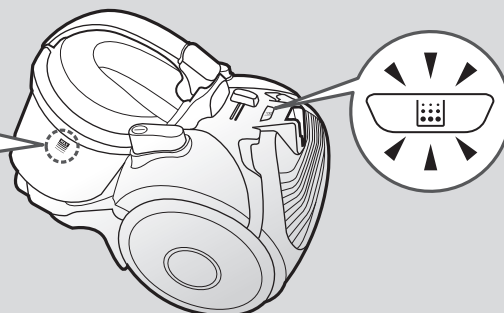
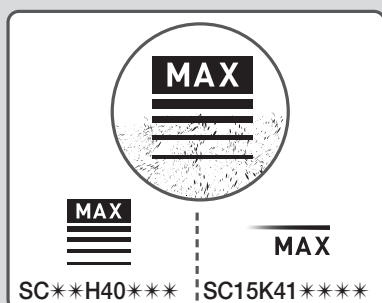


## Cleaning the hose



# Cleaning and maintaining

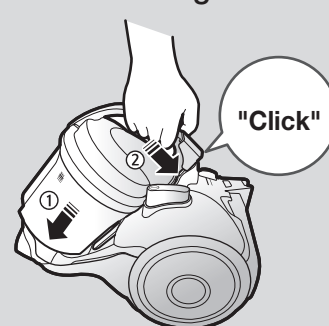
When to empty the dust bin



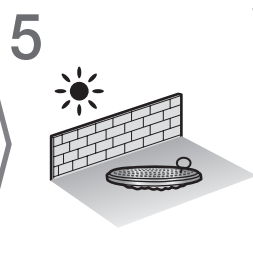
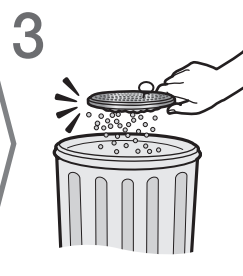
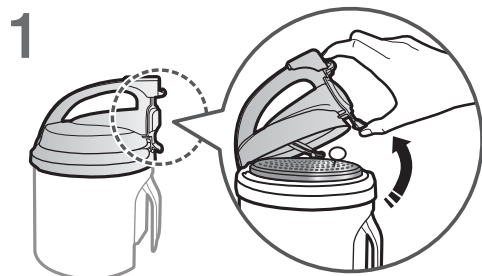
Disassembling



Reassembling

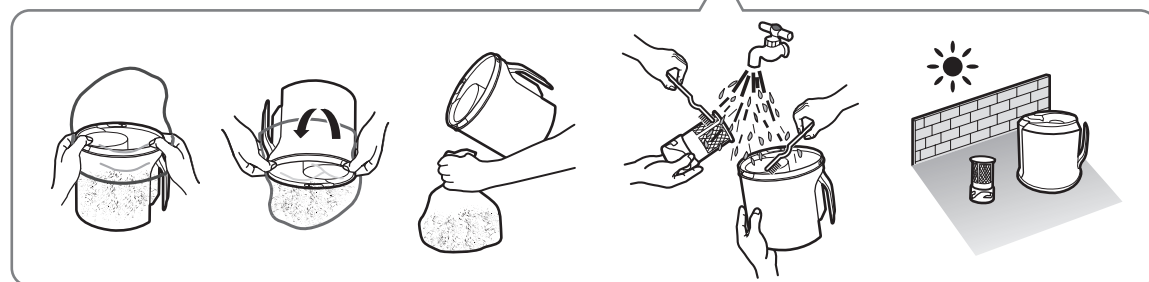
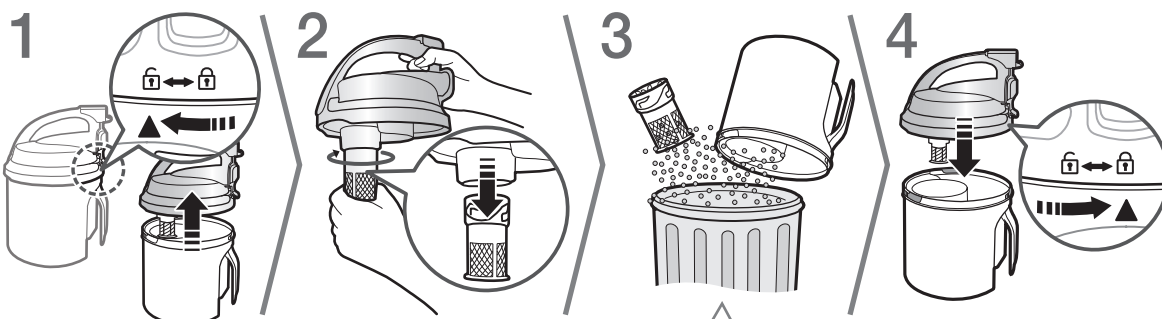


Cleaning the dust filter

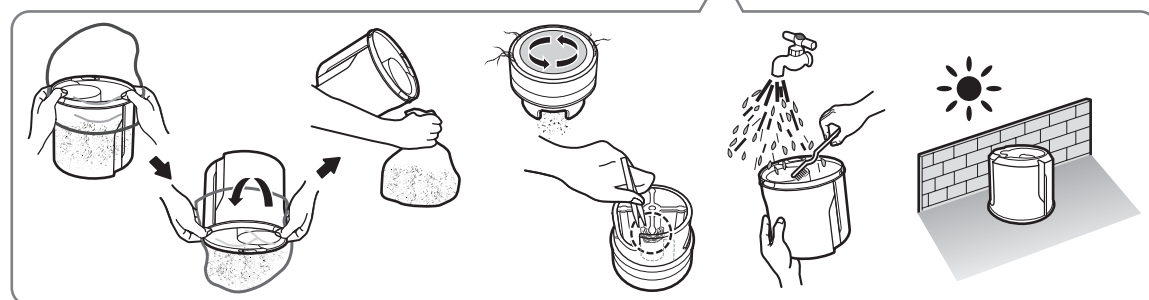
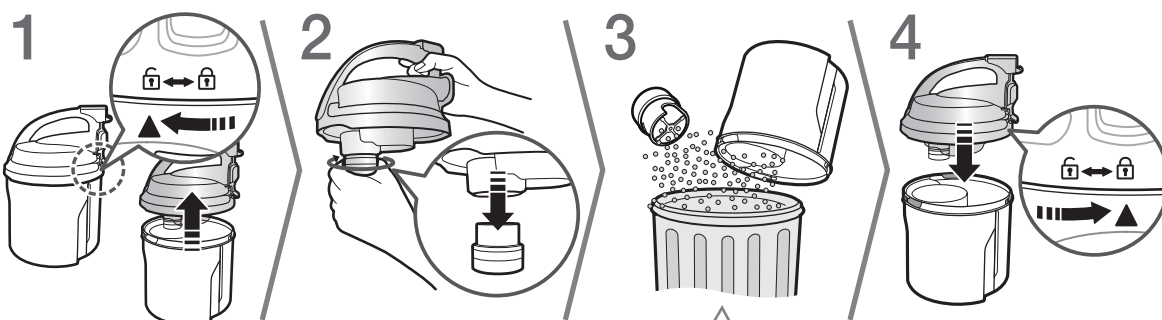


## Cleaning the dust bin

### SC\*\*H40\*\* SERIES



### SC15K41\*\*\*\* SERIES



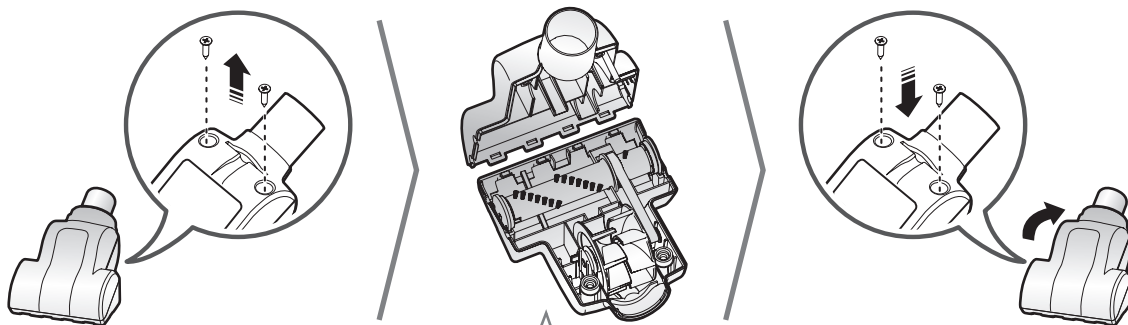
\* Anti-Tangle Turbine (Cyclone Force)

– Based on internal testing. Tested at the turbine fan using a mix of hair, pet hair on Floor.

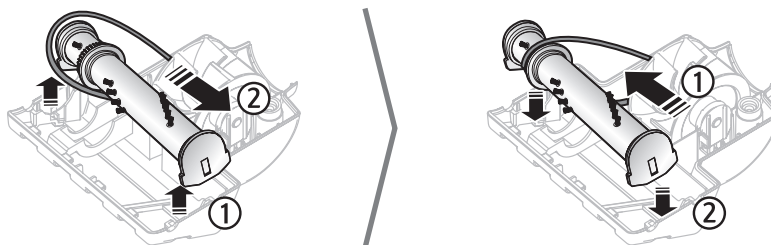


# Cleaning and maintaining

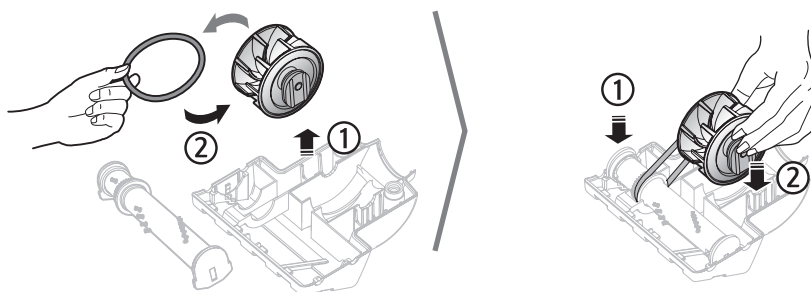
## Maintaining the mini turbo



### To replace the brush-roller

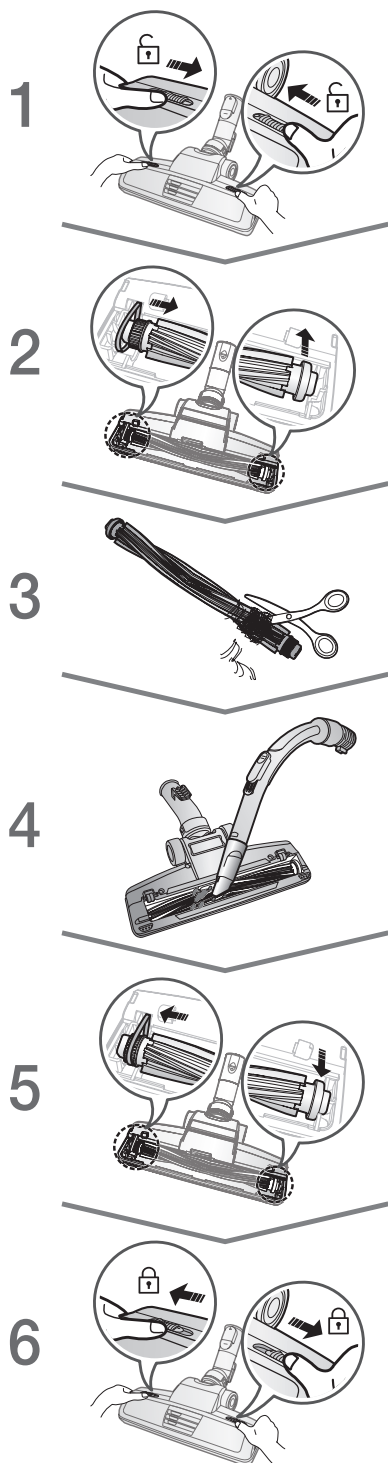


### To replace the belt

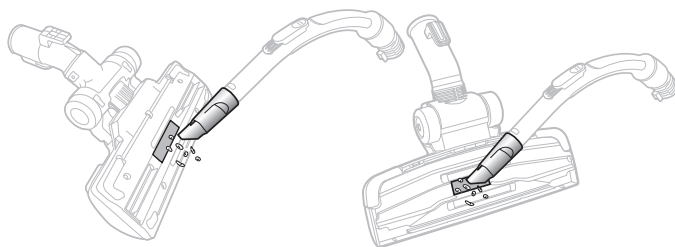




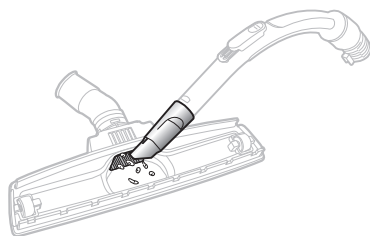
## Cleaning the power pet



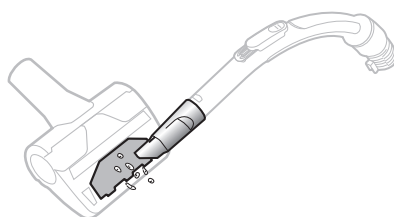
## Cleaning the 2-step brush



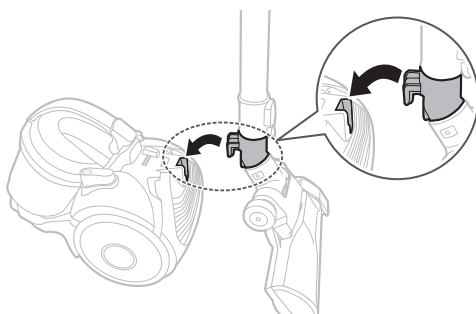
## Cleaning the parquet master



## Cleaning the anti tangle tool



## Storing the vacuum cleaner



# Notes and cautions

## In use

### Note

- ▶ Safety device will cut off the power when the vacuum cleaner was on for more than 30 minutes without any button input. In this case, press the [①] button on the body or unplug the power plug and then plug it again.
- ▶ When you use the dusting brush or crevice tool, you may feel vibration from the vacuum cleaner.
- ▶ Please do not press the button of dust bin handle when carrying the vacuum cleaner.
- ▶ The operating noise may change once the safety device is activated to prevent the dustbin from getting detached.
  - The circular tube on bottom of the dustbin prevents dust from spilling out.

### Caution

- ▶ When removing the power plug from the electrical outlet, grasp the plug, not the cord.

## About storing

### Note

- ▶ Hold the power cord and then press the [Ⓜ] button since you can get injured if the power cord may lose control while rewinding it.
- ▶ If the power cord is not rewinding well, press the [Ⓜ] button again after pulling the power cord about 2~3 m

### Caution

- ▶ Store the vacuum cleaner in the shade to prevent deformation or discoloration.

## Cleaning and maintenance

### Note

- ▶ To make the dust filter cleaner, add neutral detergent into lukewarm water and soak the filter for 30 minutes before washing it.
- ▶ Do not wash the outlet filter with water.
- ▶ To maintain the best performance of the outlet filter, replace them once a year.
- ▶ To prevent floors from scratches, inspect condition of the brush and replace it if it is worn down.
- ▶ Inspect the belt in the mini turbo to ensure that it is in good condition. If the belt is broken or cracked, replace it according to "To replace the belt" instructions.
- ▶ Replacement filters are available at your local Samsung distributors.

### Caution

- ▶ Suction may reduce noticeably due to wrong reassembling of the dust filter.
- ▶ Make sure the dust filter is completely dry before putting it back into the vacuum cleaner. Allow 12 hours for it to dry.
- ▶ Dry the dust filter in the shade, not under sunlight, to prevent transformation or discoloration.
- ▶ You may wash the dust bin with cold water.
- ▶ When suction is noticeably reduced continuously or vacuum cleaner abnormally overheats, please clean the outlet filter.
- ▶ Please contact a nearest service center if you cannot remove foreign matters from the hose.
- ▶ If tool is required for cleaning, please be careful not to hurt the mesh.

# Troubleshooting

PROBLEM	SOLUTION
<b>Motor does not start.</b>	<ul style="list-style-type: none"> <li>▶ Check cable, plug and socket.</li> <li>▶ Leave to cool.</li> </ul>
<b>Suction force is gradually decreasing.</b>	<ul style="list-style-type: none"> <li>▶ Check for blockage and remove.</li> </ul>
<b>Low or decreasing suction.</b>	<ul style="list-style-type: none"> <li>▶ Please check filter and, if required, clean as illustrated in the instructions. if filters are out of condition change them to new ones.</li> </ul>
<b>Cord does not rewind fully.</b>	<ul style="list-style-type: none"> <li>▶ Pull the cord out 2-3 m and push down the [⏻] button.</li> </ul>
<b>Vacuum cleaner does not pick up dirt.</b>	<ul style="list-style-type: none"> <li>▶ Check hose and replace if required.</li> </ul>
<b>Body overheating.</b>	<ul style="list-style-type: none"> <li>▶ Please check filters, if required clean as illustrated in the instruction.</li> </ul>
<b>Static electricity discharge.</b>	<ul style="list-style-type: none"> <li>▶ Please decrease power suction.</li> <li>▶ This can also occur when air in the room is very dry. Please ventilate the room to air humidity become a normal.</li> </ul>

# SAMSUNG

If you have any questions or comments relating to Samsung products, please contact the SAMSUNG customer care center.

Country	Customer Care Center	Web Site
U.K	0330 SAMSUNG (7267864)	<a href="http://www.samsung.com/uk/support">www.samsung.com/uk/support</a>
SOUTH AFRICA	0860 SAMSUNG (726 7864)	<a href="http://www.samsung.com/support">www.samsung.com/support</a>
AUSTRALIA	1300 362 603	<a href="http://www.samsung.com/au/support">www.samsung.com/au/support</a>
HONG KONG	3698 4698	<a href="http://www.samsung.com/hk/support">www.samsung.com/hk/support</a> (Chinese) <a href="http://www.samsung.com/hk_en/support">www.samsung.com/hk_en/support</a> (English)
MALAYSIA	1800-88-9999	<a href="http://www.samsung.com/my/support">www.samsung.com/my/support</a>
SINGAPORE	1800-SAMSUNG(726-7864)	<a href="http://www.samsung.com/sg/support">www.samsung.com/sg/support</a>

