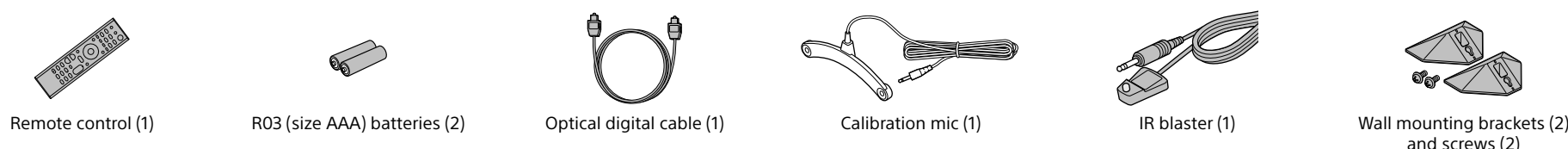




# Home Theatre System Startup Guide

HT-RT5

### Supplied accessories

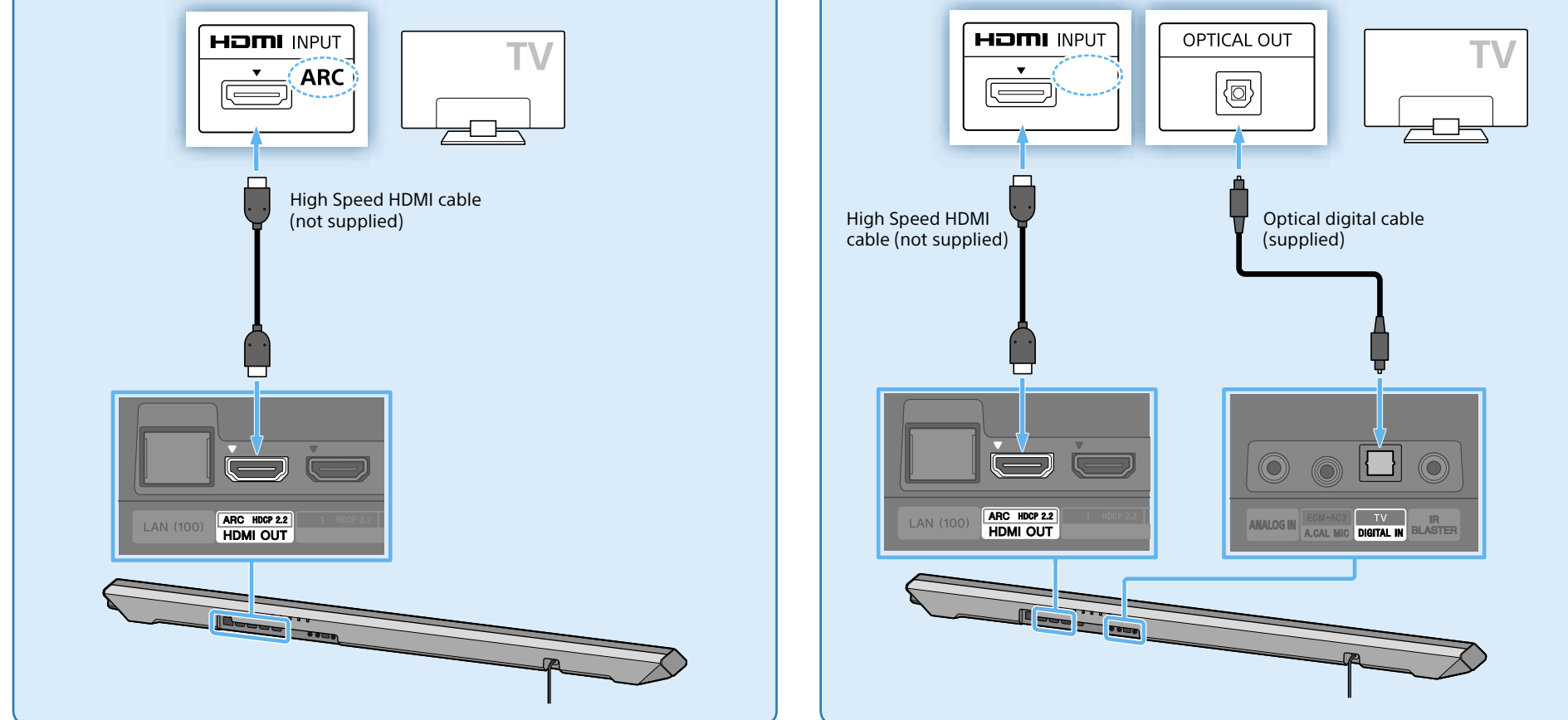


## 1 Connecting with a TV

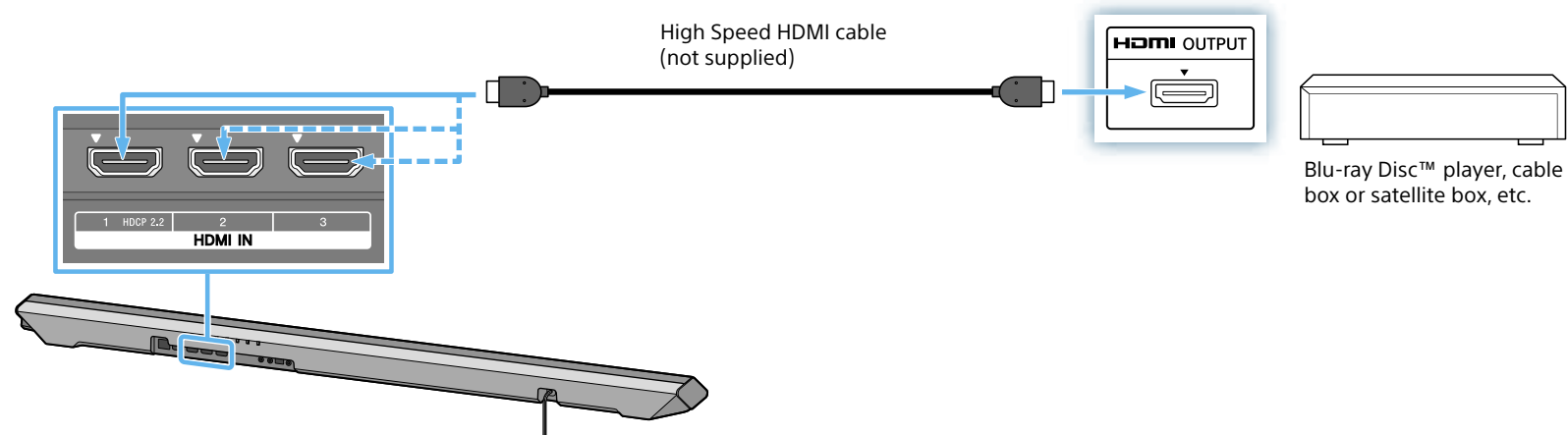
## Is the HDMI input jack on your TV labeled "ARC" ?

**YES**

**NO**



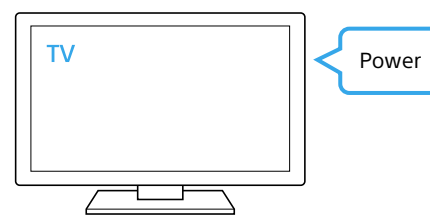
## 2 Connecting with other devices



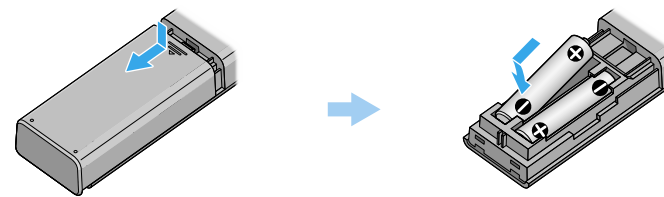
**Tip**

- If another device is connected to the TV, disconnect its High Speed HDMI cable (not supplied) from the TV's HDMI IN jack and reconnect it to the HDMI IN jack of the Bar Speaker.
- To enjoy copy right-protected 4K content, connect the HDCP 2.2-compatible HDMI jack. For details, refer to "Viewing Copyright-protected 4K Content" in the supplied operating instructions.

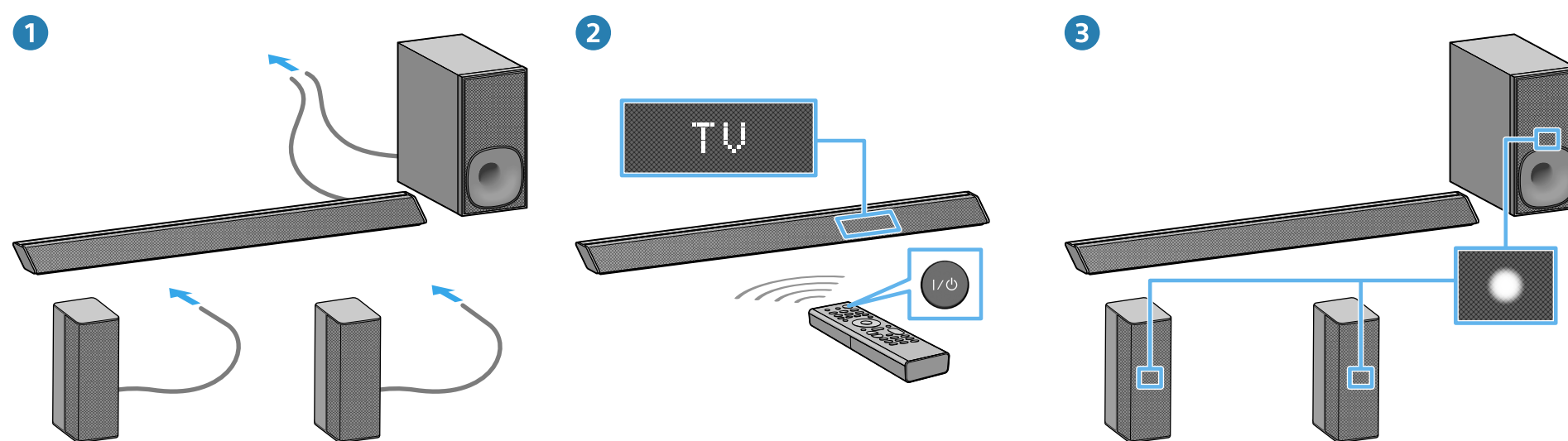
### 3 Turning on the TV



## 4 Setting up the remote control



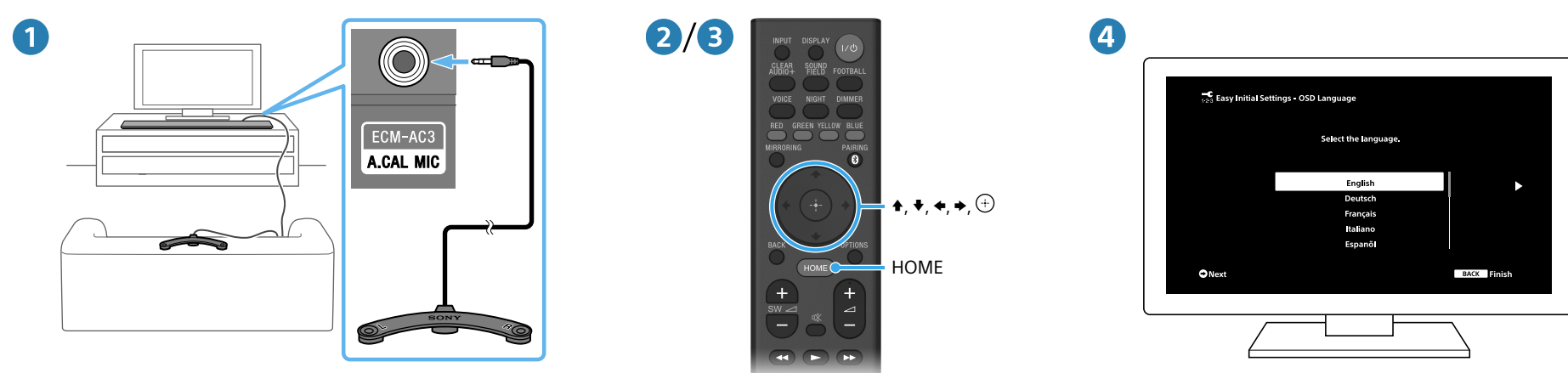
## 5 Turning on the system



- 1 Connect the AC power cords (mains leads) of the Bar Speaker, the subwoofer and the surround speakers (SUR L/SUR R).
- 2 Press I/⏻ (on/standby) of the remote control.  
The front panel display lights up.
- 3 Confirm that the on/standby indicator of the subwoofer and surround speakers (SUR L/SUR R) are lit in green.

When the on/standby indicator of the subwoofer and surround speakers (SUR L/SUR R) turns green, wireless connection of Bar Speaker, subwoofer and surround speakers (SUR L/SUR R) is completed. If the wireless connection is not completed, the on/standby indicator lights up in red. In this case, the wireless transmission is not activated. Refer to "Wireless sound (Subwoofer, Surround speakers)" of "Troubleshooting" in the supplied operating instructions.

## 6 Performing the Easy Setup



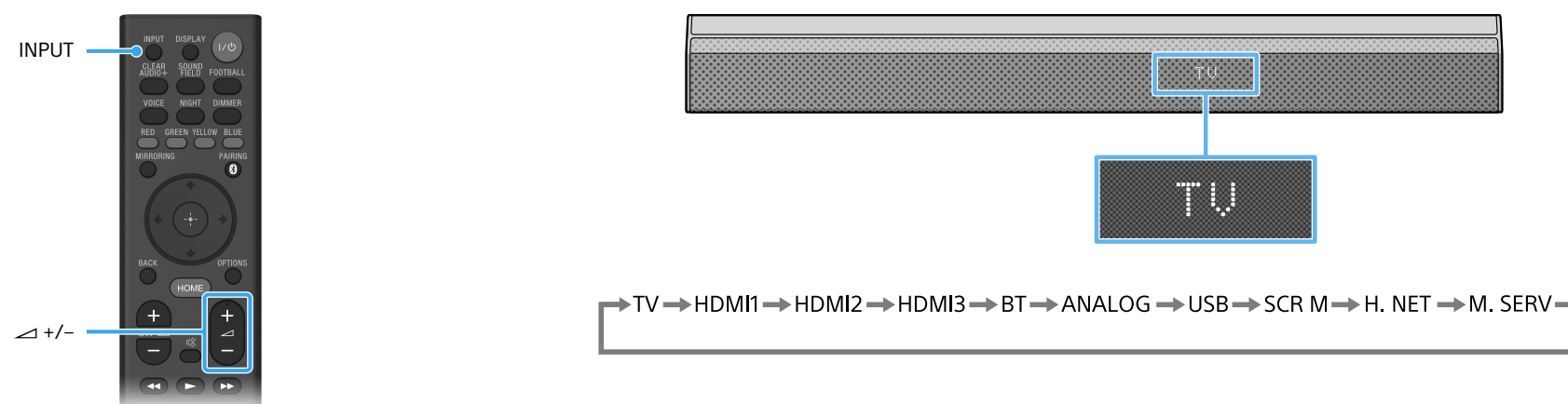
- 1 Connect the calibration mic to the A.CAL MIC (ECM-AC3) jack on the rear of the Bar Speaker.  
Follow the illustration and place the calibration mic where you would normally sit.
- 2 Press HOME on the remote control of this system.  
The [Easy Setup] screen appears.

### If the [Easy Setup] screen does not appear

Using the remote control of the TV, switch the input setting of the TV to that for the HDMI input jack the system is connected to.

- Press **⬅/➡/⬆/⬇** to select an item, and then press **⏏** to perform Easy Setup.
- Once [Easy Initial Settings are complete.] appears, select [Finish].  
The home menu appears.

## 7 Listening to the sound



Press INPUT repeatedly until the device you want appears in the front panel display. Then, press  $\triangle$  +/- repeatedly to adjust the volume.

### Listening to the audio of the TV

- 1** Select the desired program using the remote control of the TV.  
The screen switches to the television broadcast screen and the TV audio is output from the system.  
Adjust the volume pressing  +/- on the remote control of the system.

**Setup completed! Enjoy!**

Please see the supplied Operating Instructions regarding details about the network connection, NFC function, other functions.



## SongPal

**A dedicated App for this model is available on both Google Play™ and App Store.**  
Search for "SongPal" and download the free App to find out more about the convenient features.