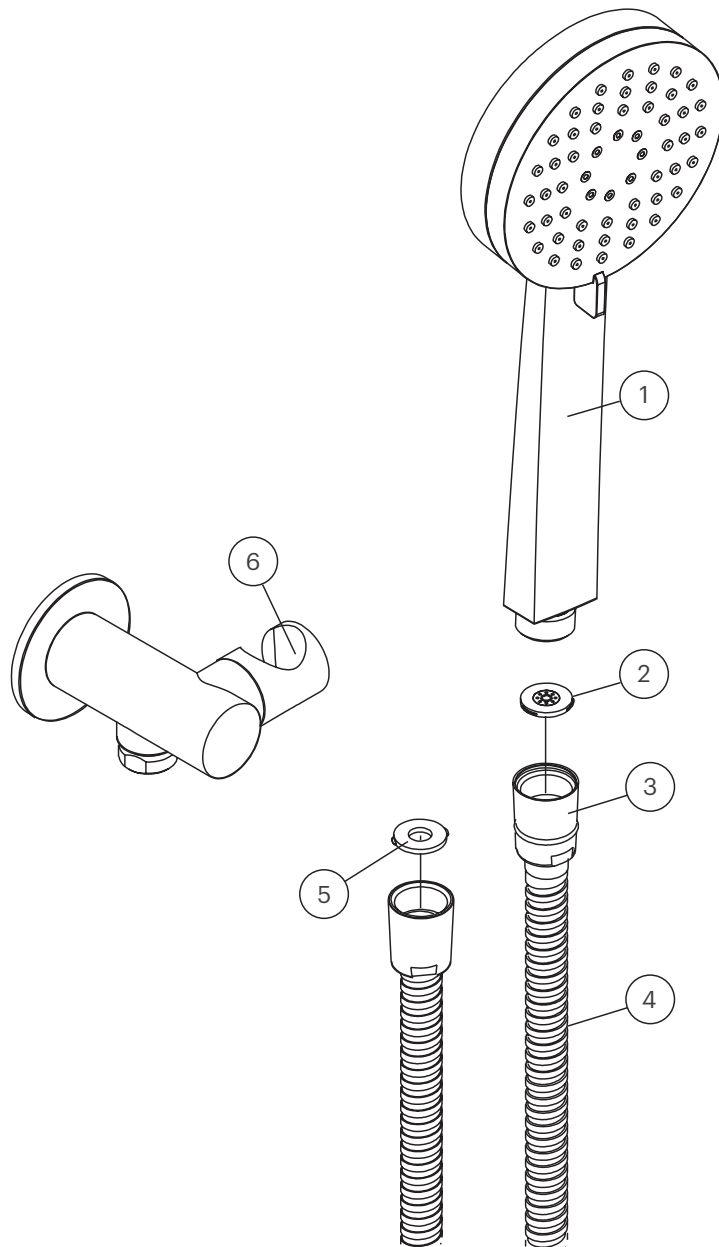


# Tonic by Rogerseller

Shower on  
Integrated Union

Installation  
Instructions

# Specification



## Tonic by Rogerseller Shower on Integrated Union

3506003201 — Chrome

❶ Other finishes available

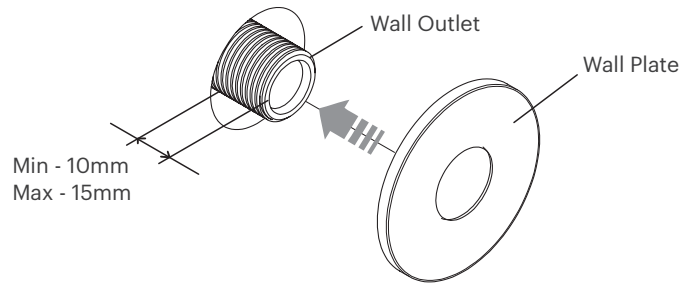
### Parts List

1. Hand Shower
2. Flow Controller
3. Conical Nut (with O-ring)
4. Shower Hose
5. Rubber Sealing Washer
6. Saddle

# Installation

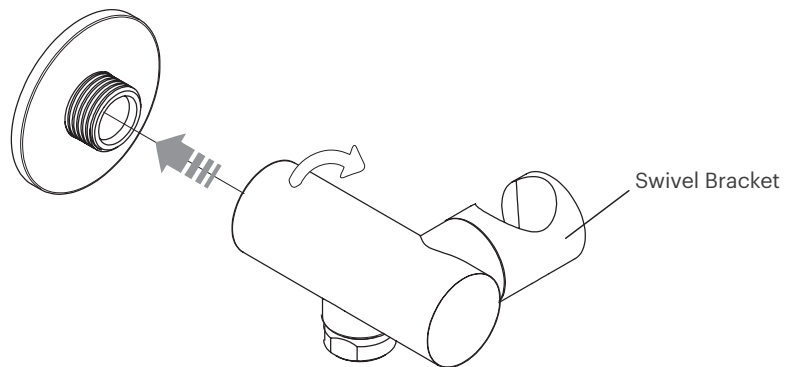
## Step 1

With approx. 10-15mm of wall outlet protruding the finished wall, place the wall plate over the wall outlet.



## Step 2

Apply a sufficient amount of thread tape or sealant to the wall outlet, then in a clockwise direction, fix the swivel bracket to the wall outlet until it reaches the wall plate and is in the correct orientation as illustrated.



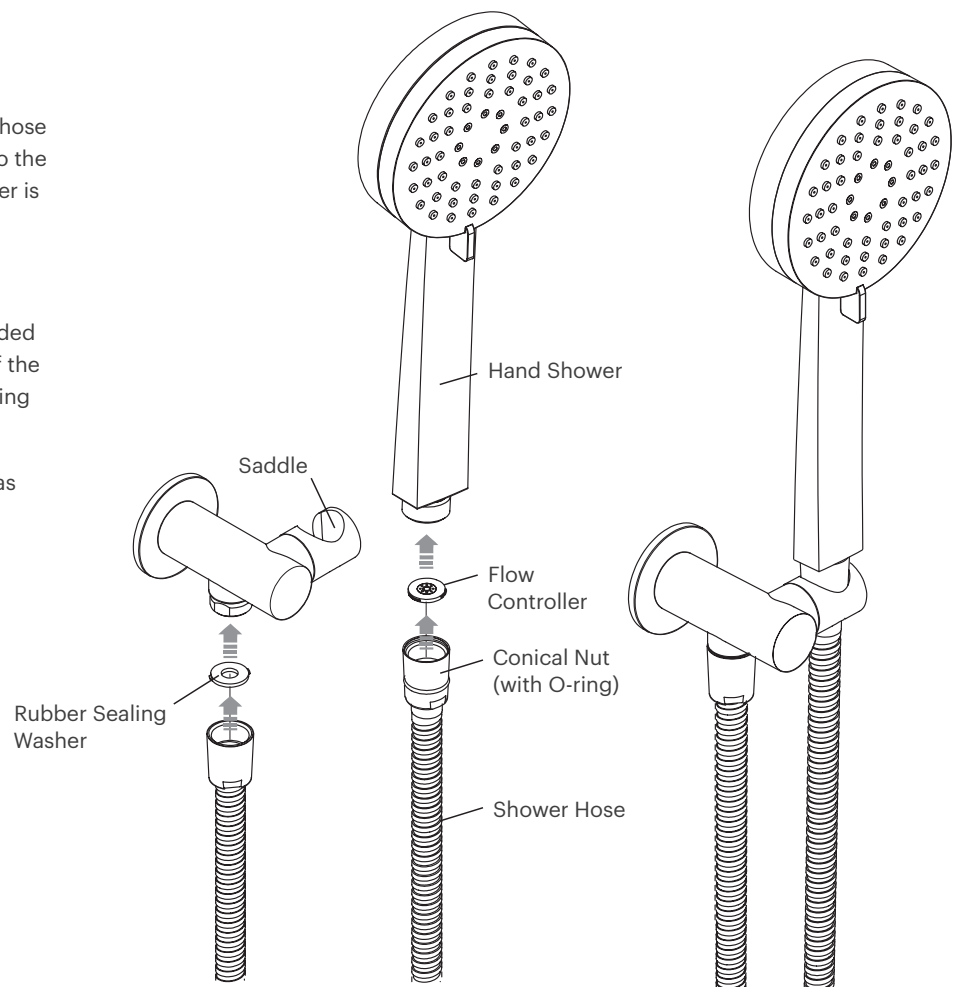
## Step 3

Take the Shower hose and connect the hose end with the conical nut and o-ring onto the hand shower ensuring the flow controller is positioned inside the conical nut.

Hook the hand shower into the saddle.

Connect the opposing end to the threaded connection located on the underside of the swivel bracket ensuring the rubber sealing washer is in position.

Check for water tightness and remedy as required.



## Specifications

It is a requirement of state plumbing codes that licensed plumbers carry out all tapware installations. All installations must comply with the relevant requirements of AS/NZS3500 and local plumbing codes.

Where showers incorporate flow controllers, instructions that care be exercised during installation to ensure that the male connecting threads do not damage the flow controllers.

A backflow prevention / dual check device must be installed to the bottom of the rail between the rail end and the hose if the hand shower can reach the shower floor when installed.

## Pressure

Maximum Hydrostatic Pressure - 1000kpa

Recommended Maximum Hydrostatic Pressure - 500 kpa. (AS/NZS 3500)

Recommended Minimum Hydrostatic Pressure - 150 kpa.

Maximum Hydrostatic Pressure may be exceeded under test conditions only in accordance with AS/NZS 3500. Where hydrostatic pressure exceeds the maximum stated above, pressure limiting valves must be installed or warranty will be void.

## Temperature

Maximum Water Temperature - 80°C

For optimum performance, Hot and Cold inlet water pressure should be equal.

## Care and Maintenance

[1] Product should be inspected for surface damage prior to installation. [2] Cleaning and handling of all finishes must be performed carefully. [3] Clean products using a soft cloth with warm soapy water only. [4] Never use harsh detergents or abrasive cleaners as these will damage the product. [5] Water marks can be removed from Matt Finishes with an application of a carnauba wax based non-abrasive polish on a microfibre cloth. [6] Do not use undue pressure when cleaning and wipe in one direction only. [7] Contact with harsh chemicals such as hair dye, hair bleach etc will result in damage to the finish. [8] Tapware should never be installed using acetone silicones. [9] Avoid the use of wax based furniture creams as this can result in a build up of deposits which will detract from the appearance. [10] Damage to finishes arising from improper installation or post installation use or failure to observe the above care and cleaning instructions will void all warranty agreements.

## Warranty

Rogerseller tapware, bathroom fittings and sanitaryware are covered by a five (5) year warranty from date of purchase. For full terms and conditions please refer to [rogerseller.com.au](http://rogerseller.com.au)

Dimensions are approximate. Information in this installation instruction is representative of the product available at the time of printing. Due to our policy of continuous product development, the design and specifications depicted are subject to change without notice. Please confirm all particulars with your client advisor prior to purchase.

**rogerseller**

[rogerseller.com.au](http://rogerseller.com.au)