

Brew Haus Kegerator

Model No. : CBH170



Safety First !

- ⚠ CO₂ gas can be dangerous! Make sure to always use CO₂ in a well-ventilated place.
- ⚠ Never exceed 40psi on your keg system.
- ⚠ Flush out Chemicals from your beer line completely before tapping keg.
- ⚠ Always thoroughly check for gas leaks once you have set up your system.

Specifications

- Easy-pull beer dispenser
- Easy setup and installation
- Overall Dimensions: 54.1cmW x 67.5cmD x 84.3cmH
(with casters)
- Weight: 38kgs
- Refrigerant: R600A, 32g
- Handy guardrail
- Convenient drip tray
- Dual-gauge CO₂ regulator
- Sturdy casters for extra mobility
- 220-240V~50Hz 0.85Amps



IMPORTANT : All persons operate this equipment must read this user manual carefully and familiarize with all operating procedures and safety precautions. Misuse this equipment may result in death, injury or property damage.

GENERAL SAFETY PRECAUTIONS

1. Please reserve this manual for future reference.
2. All warnings, cautions and instructions mentioned in this manual cannot cover all possible conditions and situations that may occur. Users must use common sense and pay extra cautions when use this equipment.
3. **NEVER** use this product for anything other than its intended use. **Never** modify this product. Failure to comply with the precautions, warnings and recommendations in this manual will nullify your warranty and may result in injury or even death.
4. **ALWAYS** ensure this kegerator is plugged into a grounded outlet with the proper power supply available.
5. **DO NOT** unplug the machine by pulling or tugging on the power cord. Firmly grasp the plug and remove from outlet.
6. **MAKE SURE** that the power outlet plug and power cords used are in good condition. Worn, frayed or damaged plugs, cords and outlets should be replaced or repaired by a certified electrician who is properly qualified to meet local safety and electrical codes. Power supply cords should be replaced by the manufacturer. **AVOID using extension cords or 3-prong adaptors.**
7. To reduce the risk of electrical shock or fire, **MAKE SURE** your unit is properly grounded. **NEVER TAMPER WITH, REMOVE OR CUT THE GROUNDING PIN!!** The wall outlet used with this kegerator **MUST** be properly grounded. If you do not have a grounded outlet, have one installed by a certified electrician who is properly qualified to meet local safety and electrical codes.
8. Make sure your machine is unplugged when conduct any maintenance or repair. A qualified service technician should always perform service or repair.
9. This product is not intended for commercial use.
10. **Do not cover the power cord. DO NOT** immerse cord in water or use in high traffic areas. **DO NOT** run cord over carpets or heating sources or elements. Never use damaged cords or plugs.
11. **INTENDED FOR UPRIGHT, FREESTANDING USE ONLY.** Do not install in cabinet or enclosed space.
12. **DO NOT operate with missing or broken parts.**
13. This product is intended for **INDOOR USE ONLY. DO NOT USE IN OUTDOORS.**
14. **Only qualified personnel should perform generator service.** Service or maintenance performed by unqualified personnel could result in injury.
15. **Do not operate this kegerator in explosive atmospheres, such as in the presence of flammable liquids, gases, or dust.**
16. **DO NOT** tamper or modify the controls.
17. **DO NOT** roll a loaded kegerator over carpets. Make sure your unit is empty before moving it.
18. **KEEP UPRIGHT** when transporting. **DO NOT ALLOW TO TILT PAST 45 DEGREE. DO NOT UPEND OR TURN UPSIDE DOWN.**

CHILD SAFETY PRECAUTIONS

19. **WARNING!** Children must be supervised around this machine. Make sure that children know that this kegerator is NOT A TOY. Close door during operation and leave closed at all time when children are present.
20. When dispose this machine, please remove the door but leave the shelves to reduce the risk of injury to children.



IMPORTANT : All persons operate this equipment must read this user manual carefully and familiarize with all operating procedures and safety precautions. Misuse this equipment may result in death, injury or property damage.

WARNINGS & DANGER NOTICES

WARNING: DO NOT use extension cords to avoid inherent dangers from faulty or inferior cords. In case of not avoidable, be sure the cord is a 3-wire cord with a 3-prong grounded plug. The cord should be rated for **AT LEAST** 1875 Watts and a No. 14 AWG minimum size.

DANGER! When dispose this machine, please remove the door but leave the shelves to reduce the risk of injury to children. **DO NOT LET CHILDREN TO BE TRAPPED.**

ALWAYS supervise children when using this machine and be sure they are not playing with the unit.

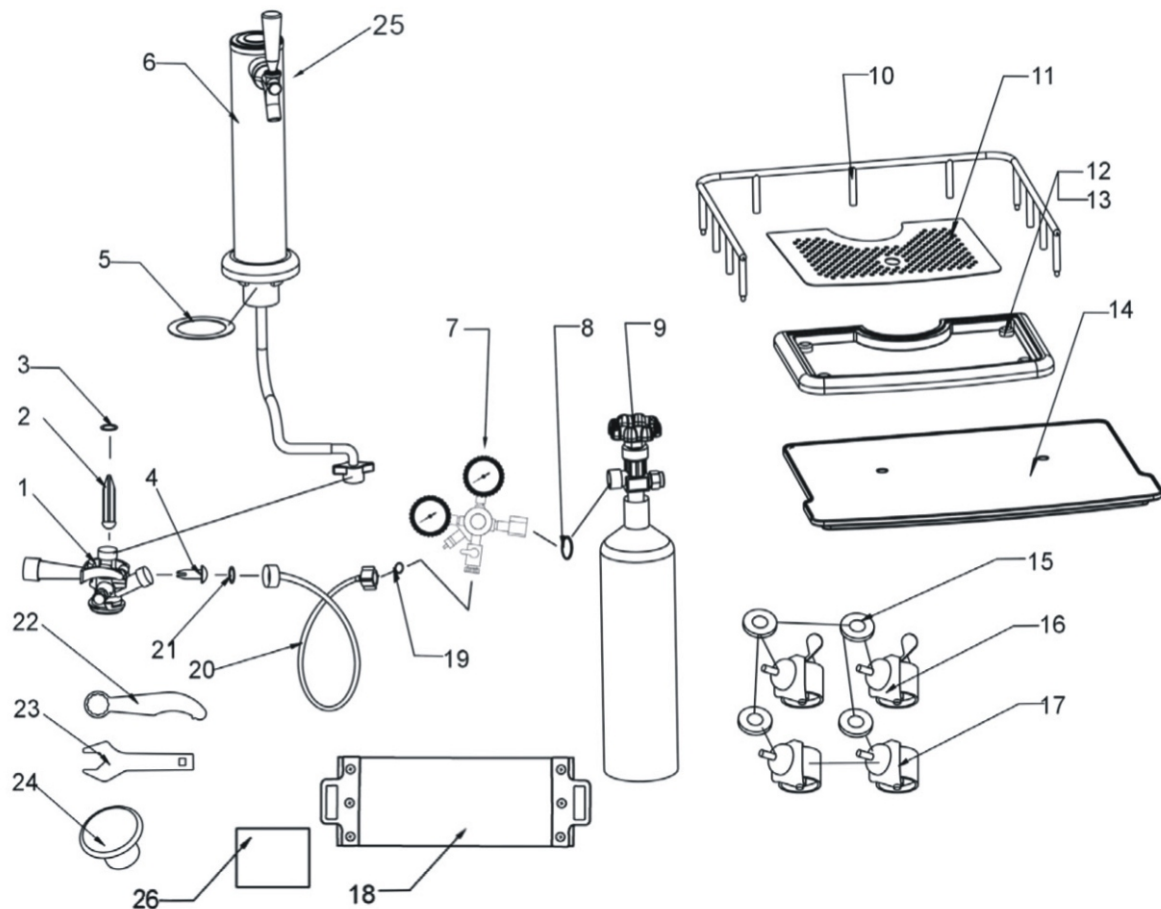
LOCATION RECOMMENDATIONS

1. **INDOOR USE ONLY, DO NOT ATTEMPT TO USE IN OUTDOOR.**
2. **INTENDED FOR UPRIGHT, FREESTANDING USE ONLY.** Do not install in cabinet or enclosed space.
3. Get the most out of your kegerator! To maximize efficiency and product life, use the nearest proper electrical outlet and ensure there is adequate ventilation and clearance around the unit. **Allow at least 5 inches clearances around the kegerator.**
4. Avoid locations where this unit will be in contact with heating elements or direct sunlight.

CO₂ SAFETY PRECAUTIONS, WARNINGS & DANGER NOTICES

1. **DANGER!** Carbon dioxide is a potentially dangerous gas. Canisters or cylinders are under pressure and proper handling is essential for safety. Familiarize yourself with canister installation and replacement before operating this unit. **HANDLE WITH CARE.** Never jostle, toss or teat cylinders roughly. If you experience headache or difficulty breathing, a leak may be occurring; open windows and doors to ventilate the area and leave immediately.
2. **INTENDED FOR UPRIGHT, FREESTANDING USE ONLY.** Do not install in cabinet or enclosed space.
3. Store CO₂ canisters away from heat or explosive gasses. Keep in a cool, dry space (21 degree) and chain containers upright to avoid tipping or knocking. Always wear gloves and safety glasses when around chemicals.
4. Review and follow instruction for changing CO₂ cylinders. **NEVER CONNECT A CO₂ CANISTER DIRECTLY TO THE UNIT** to avoid potential explosion that could result in grave injury or even death. **ALWAYS** in the regulator and safety valve in the CO₂ canister. **DO NOT REMOVE VALVES, DO NOT EXCEED 60PSI.**
5. **DO NOT ATTEMPT TO REFILL CO₂ CANISTERS!** Refills are available where most canisters are sold (see page 10 for more information)

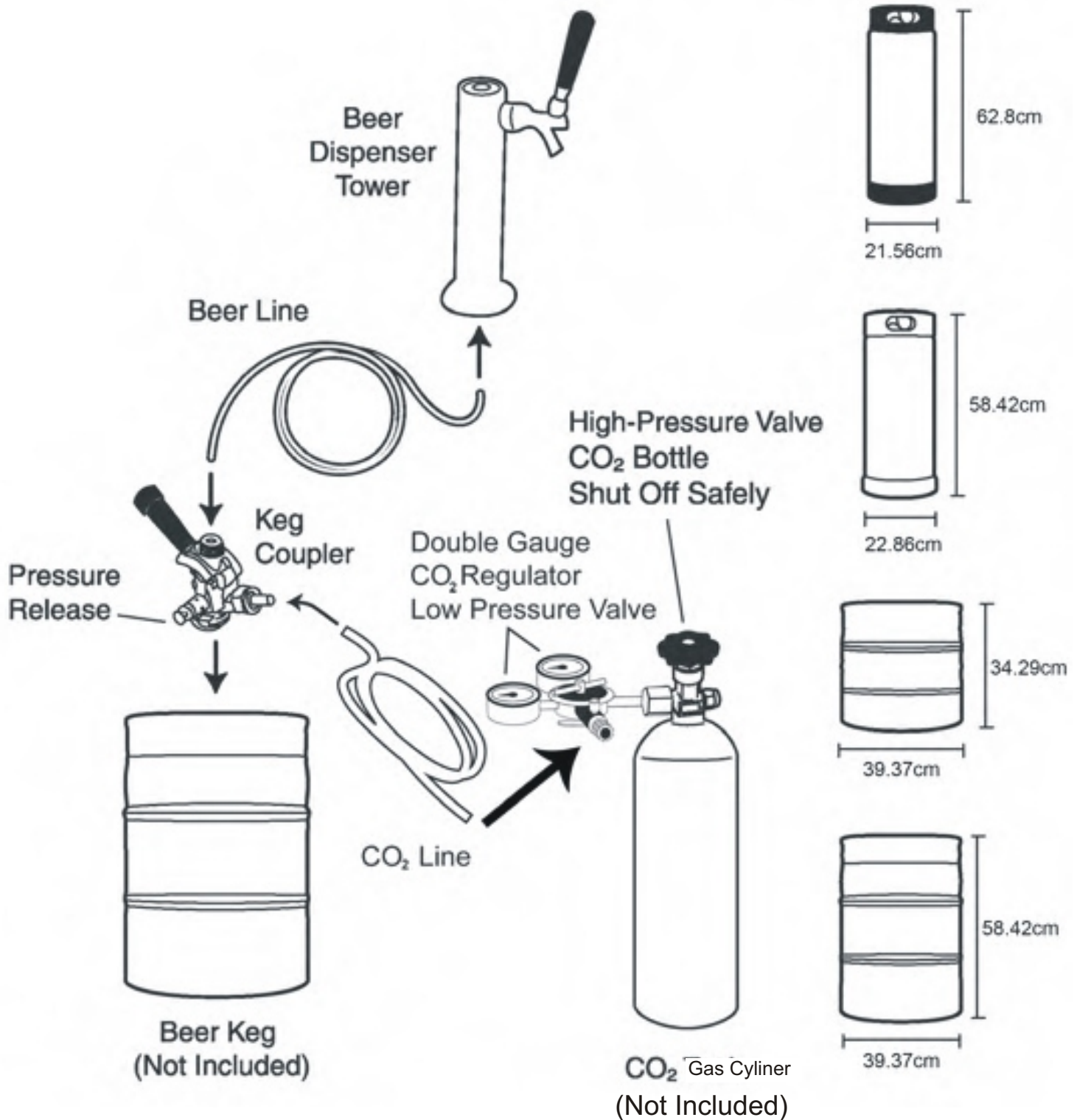
Brew Haus Parts List



Ref.	Description	Qty	Ref.	Description	Qty
#1	Keg Coupler (Fits D-Shankey Keg Valves)	1	#14	Keg Base Board	1
#2	Backflow stopper	1	#15	Metal Washer	4
#3	Rubber Washer	1	#16	Casters with locking mechanism	2
#4	CO ₂ Rubber Directional Washer	1	#17	Casters without locking mechanism	2
#5	Beer Tower Washer	1	#18	CO ₂ Tank Band	1
#6	Beer Tap/Hose Assembly	1	#19	Air Hose Wing Nut Washer	1
#7	CO ₂ Regulator	1	#20	Air Hose	1
#8	High Pressure Washer, White Nylon	1	#21	Air Hose Connector Washer	1
#9	CO ₂ Canister	Not Included	#22	Beer Tap Wrench	1
#10	Guard Rail	1	#23	Regulator Wrench	1
#11	Drip Tray Grate	1	#24	Beer Tower Hole Plug	1
#12	Drip Tray Pan	1	#25	Beer Tapper & Handle	1
#13	Rubber Foot	4	#26	Extra Washers & Parts	
#27	2 Batteries & User Manual are packed in a bag, do not through it away!				

Brew Haus Kegerator Diagram

Following diagram is a guide to help you to identify the different parts of the unit when removing them from the packaging.



Save this manual for future use

Unpacking the Brew Haus Kegerator

Note

1. Position the kegerator in an upright position and allow to sit for at least 8-10 hours before plugging into an outlet. This will allow any refrigerant that has moved to settle back to where it should be before operation.
2. The kegerator is shipped with a protective plastic lining on the door to protect it from possible scratches and accidental blemishes. We recommend you to leave it till assembly is completed.
3. The unit is shipped with shelves in place and ready for refrigerator use. To use as a refrigerator, simply remove the package parts and keg board, insert the beer tower plug, adjust the temperature settings, and after allowing ample time for refrigerant to settle after shipping, plug in the unit. To use as a kegerator, please follow the assembly steps...
4. The unit is shipped with several extra washers; please save those washers together with the manual for future use.

Kegerator Assembly

Parts Required



x 2pcs (WO/Locks
For assembly in the rear)



x 2pcs (W/Locks
For assembly in the front)

Assemble Casters

1. Lay down the unit on a dry and padded surface. Do not tilt the unit more than 30 degrees to avoid jostling the kegerator.
2. Remove the 2 front feet then attach the 2 casters with locks onto the corresponding holes on the bottom front of kegerator and the 2 casters without locks to be attached to the bottom rear of the kegerator as shown on the right hand side, then tighten them with a 3/8" wrench (not included).

Cautions: Casters should be installed with wrench to prevent breakage!

3. Once all casters are attached return the kegerator to an upright position and allow to remain for at last 8-10 hours.



Kegeerator Assembly

System Assembly

IMPORTANT! It is essential that you review and follow the installation and precautions on page 9 and 10 of the manual to avoid injury to yourself and others. These update pages outline the assembling and adjustment of the kegeerator system and pay particular attention common problems that may arise.

CO₂ IS AN ODORLESS, INVISIBLE GAS DELIVERED UNDER PRESSURE. ALWAYS HANDLE WITH CARE!

1. Locate the beer tower, faucet handle and line (see **Figure A**), then attach the faucet handle by screwing it into the faucet top(see **Figure A**).

2. Locate the beer line washer and insert it into the beer line coupler (See **Figure B**).

Cautions: This connection is one of the crucial connections in your system. Be careful to insert the washer so that it is laying flat and evenly, and when connecting, do not over tighten it. Failure of the washer at this junction can cause loss of pressure and over-foaming.



Figure A



Figure B

3. Locate the beer tower washer, and slide it onto the beer line, running the coupler end through the washer first (please refer to **Figure C**), then attach snugly onto the end of the beer tower (please refer to **Figure D**).



Figure C



Figure D

4. Thread the beer line through the hole on the top of the kegeerator, coupler end first (please refer to **Figure E**). Set the beer tower upright by lining up the grooves on the bottom of the tower with the grooves on the kegeerator holes's top. Fit end snugly into hole (please refer to **Figure F**).

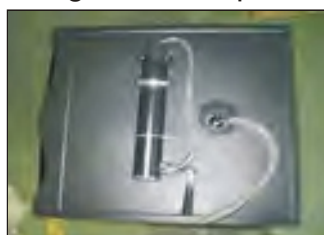


Figure F



Figure G

Note: The tower will be off-centered as shown in **Figure G**, but the next step will snap and lock it correctly into alignment.

5. Firmly grasp the tower and spigot (please refer to **Figure H**) and rotate the tower clockwise until it stops. Take care not to bend the spigot as you do this. When finished the spigot will face straight ahead (see **Figure I**).

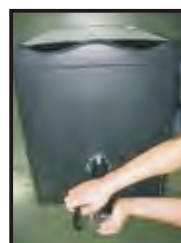


Figure H



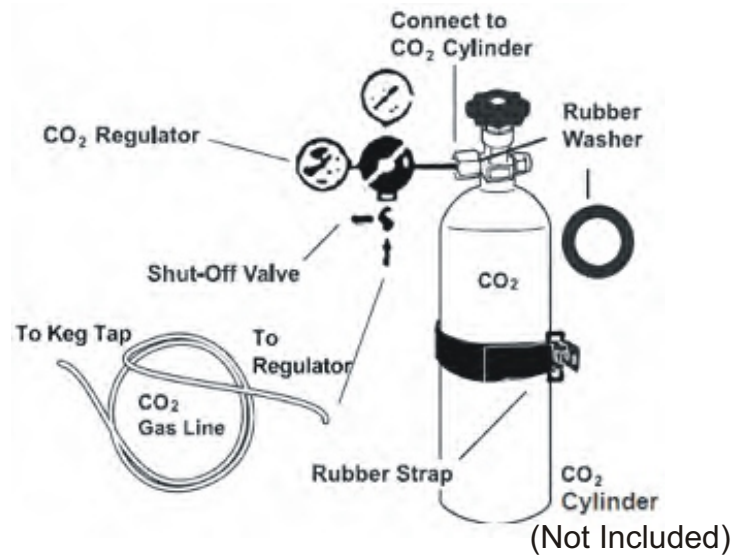
Figure I

Kegeerator Assembly

CO₂ Regulator Installation

Proper installation of your CO₂ regulator and a thorough understanding of CO₂ canisters is essential to the safe use of this product. Review and follow instruction for handling CO₂ cylinders and this section in particular to ensure your safety and the safety of others.

NEVER CONNECT A CO₂ CANISTER DIRECTLY TO THE UNIT! To avoid potential explosion that could result in grave injury or even death, ALWAYS CONNECT THE CANISTER TO REGULATOR.



DO NOT ATTEMPT TO REFILL CO₂ CANISTER YOURSELF!!

DANGER! Carbon dioxide is a potentially dangerous gas. Canisters or cylinders are under under pressure and proper handling is essential for safety. ALWAYS HANDLE WITH CARE!



SPECIAL PRECAUTION

Ensure the safety devices for your pressurized system are installed and remain installed. Once installed, **NEVER** remove the rubber washers in the regulator attachment nut to the canister or in the tap mechanism. **NEVER** bypass these safety features! **Failure to comply will void your warranty and could result in serious injury or death!**

To install the dual-gauge regulator onto the CO₂ canister:

1. Ensure the white vinyl washer is in place within the CO₂ regulator fitting. This should already be factory installed (see **Figure A**).
2. Next, loosen the pressure gauge on the regulator by turning the red knob all the way to the left. You may need to use the Allen wrench provided to loosen the knob (see **Figure B**).



Figure A



Figure B

Kegeerator Assembly

Co₂ Regulator Installation Continued...

3. The knob may turn by hand, but if needed, use a pair of grips or pliers (see **Figure D**) to get it started and then open by hand all the way to the left (see **Figure E**).



Figure D



Figure E

4. Next, attach the regulator to the CO₂ canister as shown in **Figure F**. Hand tighten the coupler, then use the wrench provided to secure the connection.

Note: When attaching the regulator to the canister, make sure the gauge remain upright as shown in **Figure F**. This will ensure the gauges will be easy to read when the canister is installed in the cabinet, and that the shut off valves are easily accessible.

Note: When facing the gauges securely installed, note that the topmost gauge indicates the PSI pressure flowing through the line to the keg and the left hand gauge indicates total tank pressure.



Figure F

5. Next, make sure that the CO₂ line washer is installed on the inside of the green coupler as shown in **Figure G**. If the washer is not present, remove one of the extra washers that are attached to the wrench and install as shown.
6. Attach the CO₂ line to the regulator as shown in **Figure H**. At this point perform the following checks:
 - a. Make sure the red lever on the regulator that leads to CO₂ line is in the OFF position as shown in **Figure H**. The lever should be perpendicular to the line.
 - b. Make sure that the round red pressure knob is opened all the way to the left and be sure that the CO₂ tank's valve is shut so that no gas is flowing.



Figure G



Figure H

Securing the CO₂ Cylinder Inside Cabinet

1. Locate the canister strap. Loop the strap onto the back fastener located on the cabinet interior and place CO₂ cylinder, with regulator and CO₂ line attached, onto the back shelf.
2. Stretch the strap around the cylinder and hook one end of the strap loop to the foremost fastener on the cabinet as shown in **Figure I**. The strap will fit very snugly.
3. Double check all connections are secure, that the green coupler on the CO₂ line is tightened and all valves are OFF.

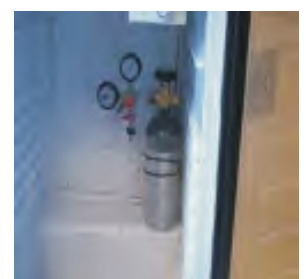


Figure I

Tapping the Keg

Install keg tap on single barrel type keg

This kegerator comes with a D type or American Sankey keg coupler suitable for tapping all 50 litre 'Euro Style' kegs as used by Carlton United Breweries.

This kegerator is capable of holding a CO₂ canister up to 2.7kgs, which should deliver in excess of 200 litres of beer.



Figure N

1. Be sure the keg coupler's black dispenser handle is closed (pushed up, see **Figure N**). Also, make sure the tower dispenser (on top of kegerator) handle is closed before proceeding with tap to keg connection.
2. Check the bottom of the coupler to ensure the black washer (pre-installed) are present and secure in place(**Figure O**). If the seals are not installed, check the extra washers and insert it to ensure a snug connection to the coupler/keg.
3. Insert the CO₂ line's black rubber "Top Hat" washer into the coupler's side-most connector for the CO₂ line (there are 2 of these included in your packaging along with the other extra washers... they are hat shaped and taper to a pointed end with a slit to better regulate gas flow... (see **Figure P & Q**). Insert tapered end first into coupler.



Figure O

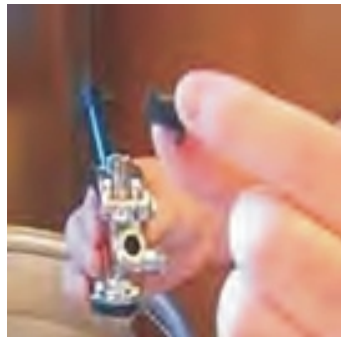


Figure P



Figure Q

4. The topmost connection on the coupler is for the beer line.
5. Fit the keg coupler into the top of the slots of keg neck (**Figure R**), being careful not to press down on the coupler handle. Press down on the coupler (not the handle) and perform a quarter turn clockwise to lock the coupler and keg together (**Figure S**). The keg is now tapped and you are ready to attach the CO₂ line and beer line to the keg coupler.



Figure R

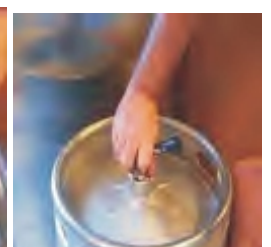


Figure S

SPECIAL PRECAUTION

Ensure the handle remains in the up position until all lines are hooked up and you are ready to dispense beer. Even though the CO₂ line is not yet hooked up there may still be a fair amount of pressure in the keg.

Kegerator Operation

1. To begin using your kegerator, you will need to attach the CO₂ line and the beer to the keg. After double-checked to ensure the silver end of the CO₂ line has a washer installed and that the hat-shaped washer of keg coupler's CO₂ connection is in place, attach the silver end of CO₂ line to the CO₂ connection on the keg coupler (**Figure T**). Hand tighten securely.



Figure T

2. Connect the beer line to the top of keg coupler, making sure the beer line coming down from the tower has a washer-gasket installed (**Figure U**). If the washer is not already installed, use the extra washer from the parts bag. Ensure the washer is lying flat within the connector before install the beer line. Hand tighten securely.



Figure U

3. With both lines connected firmly to the keg coupler, finalize the connection by pulling the black tap handle outwards (**Figure V**) then pushing down until it clicks securely (**Figure W**). There will be an audible click, signaling the CO₂ and beer connections have been opened and your keg is tapped.



Figure V

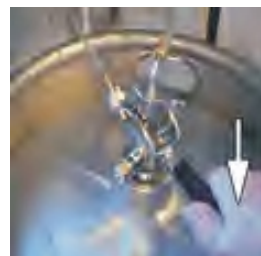


Figure W

4. Next, turn the red lever on the CO₂ regulator so that it is inline and parallel with the CO₂ line (**Figure X**). Open the CO₂ tank valve 1/4 to 1/2 turn to the left, then engage slowly the CO₂ by turning the red pressure gauge knob to the right until the regulator's PSI gauge reads between 8-15 PSI (**Figure Y**).



Figure X



Figure Y

NOTE: Too much pressure can cause foaming issues. Usually, it is better to start at a lower pressure and gradually increase to where you get a good pour with the most pressure.

5. Locate the white plastic raised bump “keg board” that removed from the bottom floor of the kegerator during unpacking. Replace the keg board in the bottom of the kegerator raised bump side down (**Figure Z**).

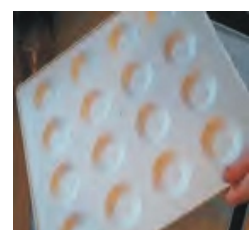


Figure Z

Kegerator Operation

6. Lift the keg atop the keg board carefully and slide all the way into the kegerator (**Figure AA**). **HANDLE CAREFULLY**. Do not jostle or bang keg! Make sure the kegerator door can be closed easily.

IMPORTANT!!

If you want to plug in your kegerator, be sure you are connecting safely to proper power supply: a 240V, 10 Amp grounded AC outlet. The cord should be rated for **AT LEAST 1875 Watts**.



Figure AA

7. Set the temperature to mid level and allow the keg to chill for 24-48 hours. Decrease temperature as desired, but **DO NOT** allow the keg freeze. Freezing the keg will result in flat beer once thawed.

NOTE: Beer pours best at cooler temperatures. It is best to get the beer as cold as possible without freezing. A refrigerator thermometer is highly recommended to monitor your kegerator temperature.

8. Before opening the tower spigot, slide the drip tray beneath the spigot to catch excess beer, then pull the tower handle towards to your body to open the tap and dispense beer. To pour a beer with a proper head of foam, **tilt the glass at a 45 degree angle until approximately 2/3 full**, then straighten the glass and finish pouring beer.

Beer dispenses best at lower pressures. You will need to find the happy balance between to much and too little in order to get a good pour without too much foam.

Note: If beer does not dispense, check previous sections on regulator hookup and tapping the keg. If your beer is running too slow, adjust the pressure on the regulator judiciously (**DO NOT EXCEED 15PSI**).

Condensation on the spigot or tap is normal. It may take as much 7-8 glasses of beer to reduce the amount of foam (**Figure AB**) dispensed after first tapping a keg.

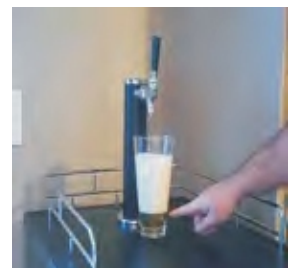


Figure AB

Storing your Kegerator

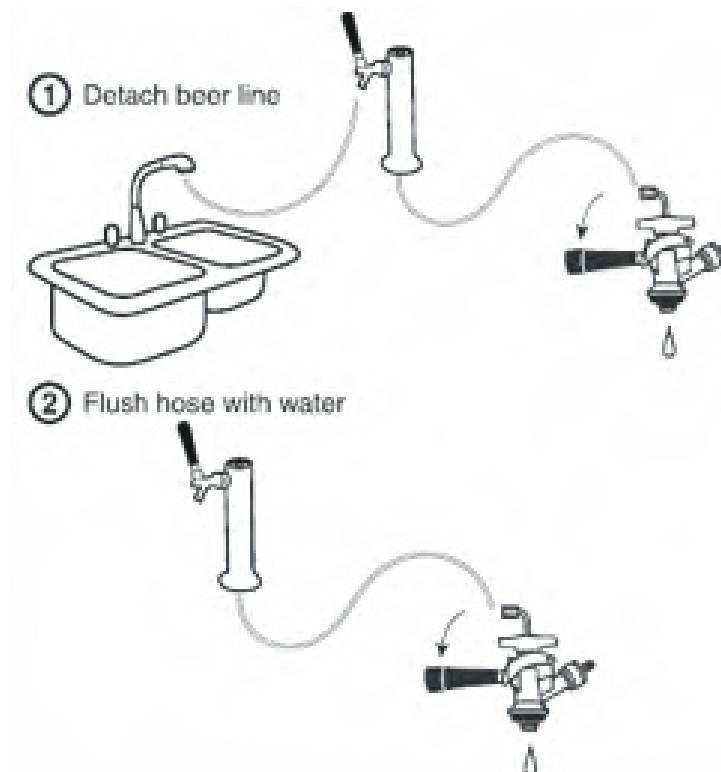
1. To prevent ice buildup on the inside of cabinet, set the temperature control to MID or LOW if you live in a cold area. This unit does not self-defrost. The temperature control is located inside the kegerator cabinet.
2. If you do not anticipate the use of your kegerator with a tapped keg for a period of two weeks or longer, rinse the beer line to prevent mold or bacterial buildup, which could cause illness.
3. Never use sharp objects in your kegerator. If you are storing your machine, be sure to prevent children from playing in or around the unit.

DANGER! Children can become trapped in an unsecured and unsupervised environment.

Maintenance & Storage

To clean the lines and tap, please follow bellow steps:

1. TURN OFF CO₂ .
2. Wipe the outside of kegerator, clean drip tray and around guardrail. Clean the inside of cabinet by wiping with a damp cloth. Clean gasket on door to help eliminate trapped, spilled beer which could produce mold and mildew.
3. Disconnect the beer hose from the tap coupler and twist dispenser faucet carefully off the top of kegerator.
4. Set the dispenser handle to the open or down position before flushing, then position the faucet over a sink and hold the beer line under running water for approximately 5 minutes, allowing the water to flush out the faucet head. This will also help eliminate trapped, spilled beer which could produce mold and mildew.
5. Reconnect beer line and dispenser faucet when done or leave disconnected if you plan to store for a long period.



Battery for Display Screen

This keg provides the function of temperature display, simply remove the display frame by hand (see **Figure AC**) to load the 2 button cell batteries (included) into position.

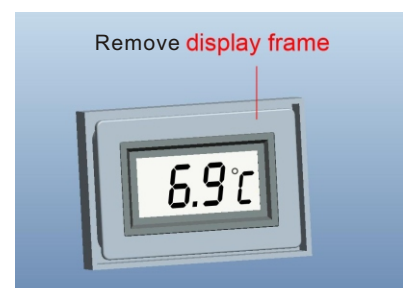


Figure AC

Brew Haus Kegerator Warranty Registration Form

Thank you for purchasing a Brew Haus Kegerator from Clever Home Products Pty Ltd. (CHP). CHP provides a 1 year IN HOME warranty on the Brew Haus Kegerator.

To register your Brew Haus Kegerator **NOW** for warranty, and to allow us to provide you with the best possible after-sales service, please fill out the following information and return this to, **Clever Home Products Pty Ltd, Level 5, 15-19 Claremont St, South Yarra, Victoria 3141.**

To make a warranty claim, please email or mail (to the address above) your details and a brief description of the fault to mattew@cleverhomeproducts.com.au

Customer's Name: _____

Address: _____

State: _____ Postcode: _____

Tel: (Home) _____ (Mobile) _____ Email: _____

Model Purchased: _____ Serial No.: _____

Date of Purchase: _____

Invoice/Receipt No.: _____

This warranty does not cover the following:

1. Any damages caused from improper use or not used in accordance with the instruction manual.
2. Damage caused by connecting your product to the wrong power source/supply.
3. Incorrect installation or modifications made during installation or use of the products.
4. Removing screws or otherwise opening the outer case will void the warranty.
5. Any damages resulting from poor handling or moving of the product, misuse, fire or water damage etc...
6. Failure to maintain the product as per the Instruction Manual.