



MUSICflow H7 / H5

SMART Hi-Fi AUDIO

Wireless Multi-room

Model : NP8740 (H7)
NP8540 (H5)



ENGLISH | OWNER'S MANUAL

Please read this manual carefully before
operating your speaker and retain it for future
reference.

Safety Information



CAUTION: TO REDUCE THE RISK OF ELECTRIC SHOCK DO NOT REMOVE COVER (OR BACK) NO USER-SERVICEABLE PARTS INSIDE REFER SERVICING TO QUALIFIED SERVICE PERSONNEL.



This lightning flash with arrowhead symbol within an equilateral triangle is intended to alert the user to the presence of uninsulated dangerous voltage within the product's enclosure that may be of sufficient magnitude to constitute a risk of electric shock to persons.



The exclamation point within an equilateral triangle is intended to alert the user to the presence of important operating and maintenance (servicing)

instructions in the literature accompanying the product.

WARNING: TO PREVENT FIRE OR ELECTRIC SHOCK HAZARD, DO NOT EXPOSE THIS PRODUCT TO RAIN OR MOISTURE.

WARNING: Do not install this equipment in a confined space such as a book case or similar unit.

NOTICE: For safety marking information including product identification and supply ratings, please refer to the main label on the bottom or rear of the apparatus.

CAUTION : Only use the AC adapter supplied with this device. Do not use a power supply from another device or another manufacturer. Using any other power cable or power supply may cause damage to the device and void your warranty.

CAUTION concerning the Power Cord

Most appliances recommend they be placed upon a dedicated circuit;

That is, a single outlet circuit which powers only that appliance and has no additional outlets or branch circuits. Check the specification page of this owner's manual to be certain. Do not overload wall outlets. Overloaded wall outlets, loose or damaged wall outlets, extension cords, frayed power cords, or damaged or cracked wire insulation are dangerous. Any of these conditions could result in electric

shock or fire. Periodically examine the cord of your appliance, and if its appearance indicates damage or deterioration, unplug it, discontinue use of the appliance, and have the cord replaced with an exact replacement part by an authorized service center. Protect the power cord from physical or mechanical abuse, such as being twisted, kinked, pinched, closed in a door, or walked upon. Pay particular attention to plugs, wall outlets, and the point where the cord exits the appliance. To disconnect power from the mains, pull out the mains cord plug. When installing the product, ensure that the plug is easily accessible.

CAUTION:

- The apparatus should not be exposed to water (dripping or splashing) and no objects filled with liquids, such as vases, should be placed on the apparatus.
- No naked flame sources, such as lighted candles, should be placed on the apparatus.
- To avoid fire or electric shock, do not open the unit. Contact to qualified personnel only.
- Do not leave the unit in a place near the heating appliances or subject to direct sunlight, moisture, or mechanical shock.
- To clean the unit, use a soft, dry cloth. If the surfaces are extremely dirty, use a soft cloth lightly moistened with a mild detergent solution. Do not use strong solvents such as alcohol, benzene, or thinner, as these might damage the surface of the unit.
- Do not use volatile liquids such as insecticide spray near the unit. Wiping with strong pressure may damage the surface. Do not leave rubber or plastic products in contact with the unit for a long period of time.
- Do not place the unit over the vehicle's air bag. When the air bag deploys, it may result in injury. Before using in the car, fix the unit.
- Do not leave the unit on an unstable place such as high shelves. It may fall down because of the vibration of the sound.

For Wireless product European Union Notice**CE 0197** 

LG Electronics hereby declares that this/these product(s) is/are in compliance with the essential requirements and other relevant provisions of Directive 1999/5/EC, 2004/108/EC, 2006/95/EC, 2009/125/EC and 2011/65/EU.

Please contact to the following address for obtaining a copy of the DoC (Declaration of Conformity).

Contact office for compliance of this product :

LG Electronics Inc.
EU Representative, Krijgsman 1,
1186 DM Amstelveen, The Netherlands

- Please note that this is NOT a Customer Service contact point. For Customer Service Information, see Warranty Card or contact the dealer that you purchased this product.

Indoor use only.

RF Radiation Exposure Statement

This equipment should be installed and operated with minimum distance 20 cm between the radiator and your body.

Disposal of your old appliance

1. When this crossed-out wheeled bin symbol is attached to a product it means the product is covered by the European Directive 2002/96/EC.
2. All electrical and electronic products should be disposed of separately from the municipal waste stream via designated collection facilities appointed by the government or the local authorities.
3. The correct disposal of your old appliance will help prevent potential negative consequences for the environment and human health.
4. For more detailed information about disposal of your old appliance, please contact your city office, waste disposal service or the shop where you purchased the product.

Table of Contents


1 Getting Started

- 2 Safety Information
- 6 Main Features
- 6 Accessories
- 6 Introduction
- 7 Understanding Connection
 - 7 – Basic Connection
 - 7 – Group playback using Music Flow Player app
- 8 Top Panel
- 9 Rear Panel

2 Connecting

- 10 Connecting the AC Adapter
- 10 Installing “Music Flow Player” App
 - 11 – Starting with Music Flow Player app
- 12 Connecting the speaker to your Home Network
 - 12 – Connecting the speaker to your network with a LAN cable
 - 14 – Connecting the speaker to your Network via the Wi-Fi Setup Method (Android)
 - 17 – Connecting the speaker to your Network via the Wi-Fi Setup Method (iOS)
- 21 Connecting the speakers to your Home Network (Additional)
 - 21 – Adding another speaker
- 24 – Connecting the speakers to your Network with a Music Flow R1

3 Operating

- 29 Basic Operations
 - 29 – Using  / I / F button
 - 29 – Using volume button
- 30 Enjoying the Music with Music Flow Player app
 - 30 – Overview of Home menu
 - 31 – Overview of the side menu
 - 31 – Playing a song
 - 33 – Overview of Playback
 - 34 – Group Playback
 - 36 – Seamless playback
- 38 Setting the Speaker with Music Flow Player app
 - 38 – Overview of setting menu
 - 39 – [General] Menu
 - 39 – [Speakers] Menu
 - 40 – [Alarms/Sleep Timer] Menu
 - 40 – [Music Library] Menu
 - 41 – [Account management] Menu
 - 41 – [Update] Menu
- 42 Using a Bluetooth Wireless Technology
 - 42 – About Bluetooth
 - 42 – Bluetooth profiles
 - 42 – Listening to Music of a Bluetooth Device
 - 43 – NFC for Easy Pairing (Android Only)
- 43 Listening to Music from Your External Device
- 44 Using Media Server for PC
 - 44 – Music Flow PC Software for windows
 - 45 – Nero MediaHome 4 Essentials for Mac OS
- 46 Standby mode
 - 46 – Standby mode
 - 46 – Network standby mode
- 46 Reset the Speaker
 - 46 – Resetting the speaker
 - 46 – Resetting the Music Flow R1

4 Troubleshooting

- 47 Troubleshooting
- 47 – General
- 48 – Network
- 49 – Application and PC Software

5 Appendix

- 50 File requirement
- 50 Trademarks and Licenses
- 51 Specifications
- 52 Handling the Speaker
- 52 Important Information Relating to
Network Services
- 53 TERMS OF USE

1

2

3

4

5

Some of the content in this manual may differ from Music Flow Player app depending on the application's version.

Main Features

Made for iPod/iPhone/iPad or Android device

Enjoys music from iPod/iPhone/iPad or Android device with simple connection.

Portable In

Listens to music from your portable device.

Music Flow Player application

Listens to music stored on your smart device.

You can control this speaker with your iPod touch/iPhone/iPad or Android device via Music Flow Player app. This speaker and your smart device must be connected to the same network. Visit "iTunes store" or "Google Play Store" or use the QR code shown below to search for "Music Flow Player" app. For detailed information, refer to page 10.



(Android OS)

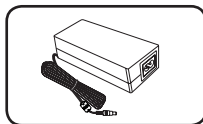


(Apple iOS)

- Depending on the application's version and the settings of smart device, Music Flow Player app may not be operated normally.
- Some smart devices may not be compatible with this speaker.

Accessories

Please check and identify the supplied accessories.



AC adapter (1)



Power cord (1)



Simple manual

! Note

The LAN cable and Portable cable are not included. So purchase the cables separately.

Introduction

Symbol used in this manual

! Note

Indicates special notes and operating features.

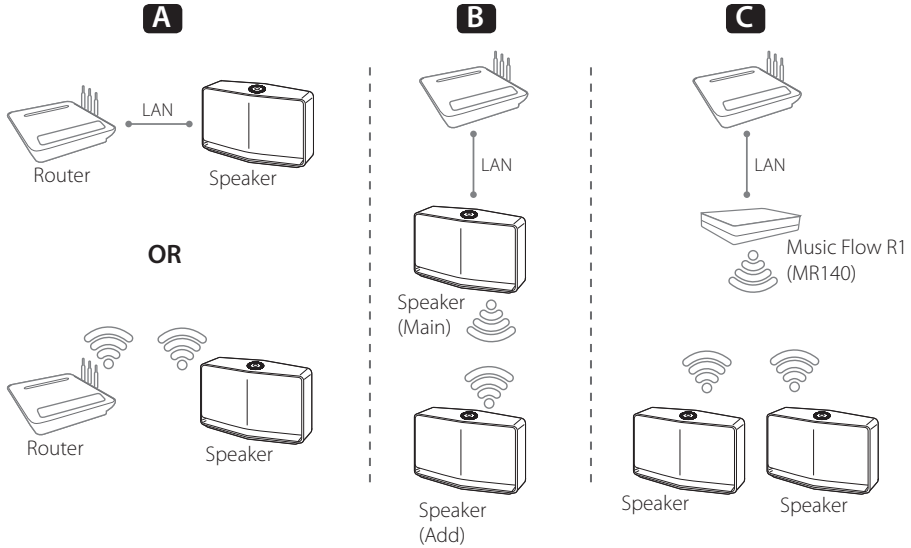
⚠ Caution

Indicates cautions for preventing possible damages from abuse.

Understanding Connection

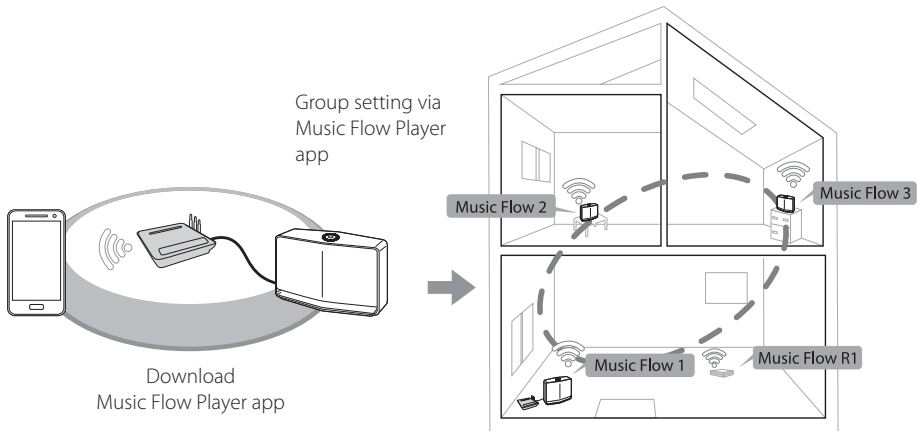
Basic Connection

- A** Wired or Wi-Fi connection to router.
- B** Wired and wireless connection.
- C** Wired or Wi-Fi connection using a Music Flow R1.
- B C** You can use multiple speakers in a multi-room configuration.

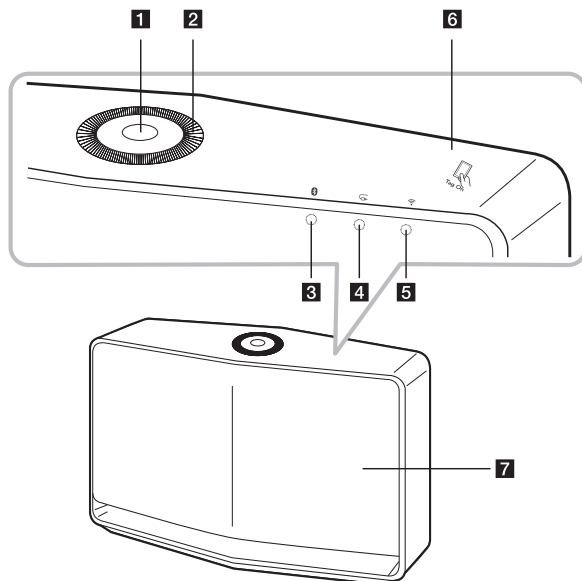


Group playback using Music Flow Player app

You can use multiple speakers in a multi-room configuration. (page 34)



Top Panel



1 / F button

- Power On / Changing the mode
- Switching to the standby mode (page 29)

2 Volume wheel

Turn the wheel clockwise to increase volume, or counterclockwise to decrease volume.

3 Bluetooth status LED (page 42)

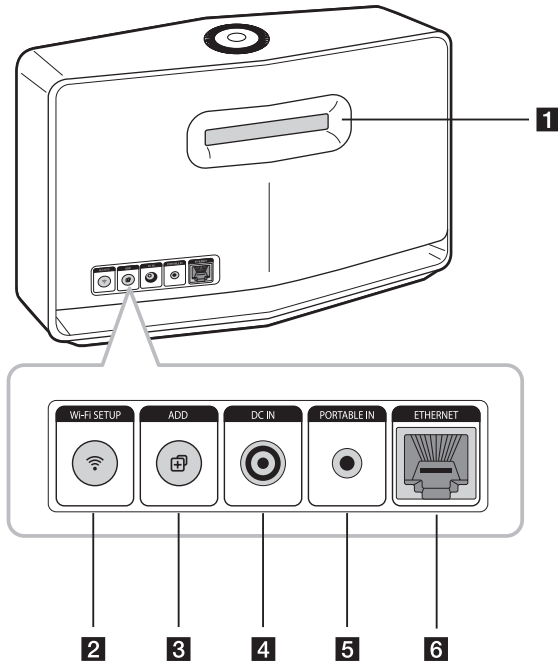
4 Portable In status LED (page 43)

5 Network status LED (page 12)

6 NFC Tag (page 43)

7 Speaker

Rear Panel



1 Speaker duct

A hole for plentiful bass sound on speaker cabinet.

2 Wi-Fi SETUP button

Connects your speaker to your network using Wi-Fi setup. (page 14)

3 ADD button

Adds the speaker to your network. (page 21)

4 DC IN (AC adapter input)

5 PORTABLE IN

Listens to music from your portable device.

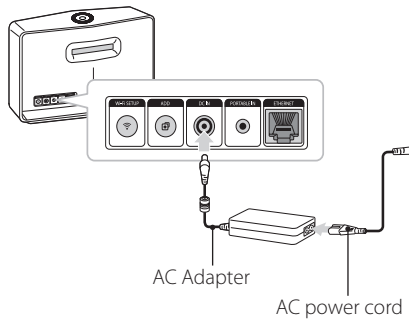
6 ETHERNET

Connects the speaker to your network using a LAN cable.

Connecting the AC Adapter

Connect the speaker to the power supply with the supplied AC adapter.

1. Connect the supplied AC power cord to the AC adapter.
2. Connect the AC adapter cable to DC IN adapter input.
3. Plug the AC power cord into an AC outlet.



Caution

Only use the AC adapter supplied with this device. Do not use a power supply from another device or manufacturer. Using any other power cable or power supply may cause damage to the device and void your warranty.

Installing "Music Flow Player" App

Through "iTunes store" or "Google Play Store"

1. Tap the "iTunes store" icon or "Google Play Store" icon.
2. Type in "Music Flow Player" in the search bar and tap "Search".
3. Select "Music Flow Player" in the search result list to download.



Note

- Music Flow Player app will be available in version of the software as follow;
Android O/S : Ver 2.3.3 (or later)
iOS O/S : Ver 5.1.1 (or later)
- Depending on the device, "Music Flow Player" app may not work.

Through QR code

Install "Music Flow Player" app through QR code.
Scan the QR code using the scanning application.



(Android OS)



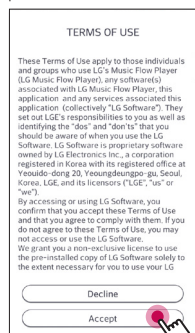
(Apple iOS)

! Note

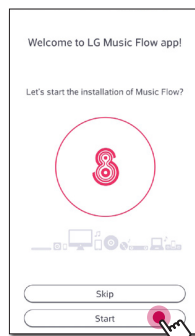
- Make sure that your smart device is connected to the internet.
- Make sure that your smart device has a scanning application. If you don't have, download it from "iTunes store" or "Google Play Store".

Starting with Music Flow Player app

1. When you launch Music Flow Player app for the first time, the terms of use appears on the screen. Check the contents of terms of use and select [Accept].



2. Select [Start] to install the speaker you've purchased.



Refer to "Connecting the speaker to your Home Network" on page 12.

! Note

If you want to return to the terms of use screen, initialize the Music Flow Player app on the smart device's setting menu.

Connecting the speaker to your Home Network

Using a wired network provides the best performance, because the attached devices connect directly to the network without radio frequency interference.

Please refer to the documentation for your network device for further instructions.

Preparation

- Make sure that wireless network environment using a router is installed at your home.
- Make sure that the speaker and the smart device are connected to the same router.

Requirements

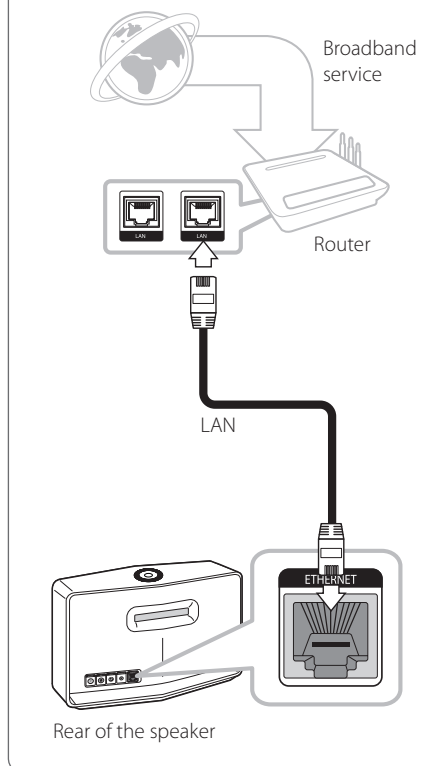
- Wireless router
- Smart device (Android or iOS)


! Note

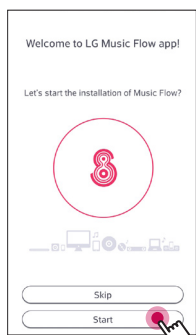
- Make sure that DHCP's server is activated on wireless router.
- If you cannot connect the speaker with your router, go to setting of the router and then make sure that "Allow wireless client to see each other and access my local network" box is unchecked.


Connecting the speaker to your network with a LAN cable

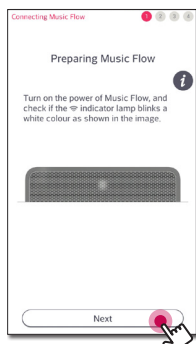
Connection overview



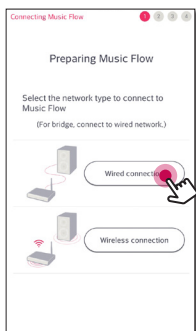
1. Plug the speaker into an electrical outlet. The  Network status LED starts to blink white.
2. On your smart device, launch Music Flow Player app. Select [Start] to install the speaker.




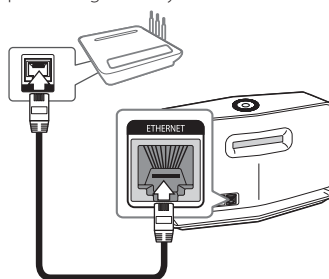
3. Check the  Network status LED on the speaker and select [Next] to go to the next screen.



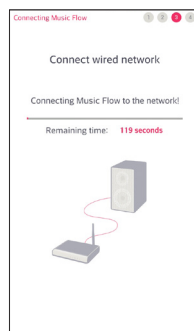
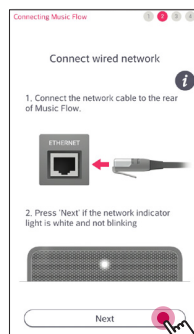
4. Select [Wired connection] on the screen.



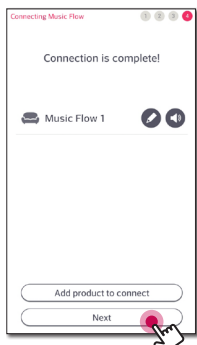
5. Connect one end of the LAN cable to the speaker's ETHERNET port and connect the other end to your wireless router. Wait a moment until  Network status LED stops blinking and stays white.



6. Then select [Next] on the screen.



7. Select [Next] to complete the connection.



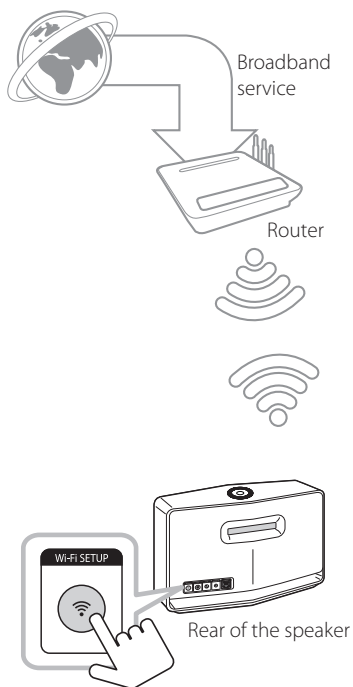
After connecting the speaker, you can see the list of connected music storage device and music curation screen. Follow the instructions on the screen.


! Note

- You cannot use the speaker without a router. When using the wired router, you can control the speaker with Music Flow PC Software. (page 44)
- The speaker and the smart device should be connected to the same router.


Connecting the speaker to your Network via the Wi-Fi Setup Method (Android)

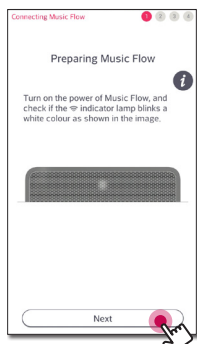
Connection overview



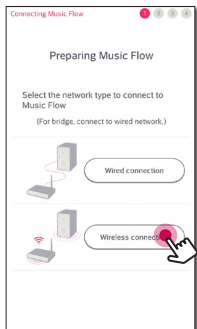
1. Plug the speaker into an electrical outlet. The  Network status LED starts to blink white.
2. On your smart device, launch Music Flow Player app. Select [Start] to install the speaker.



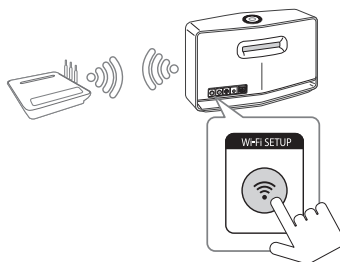
3. Check the  Network status LED on the speaker and select [Next] to go to the next screen.



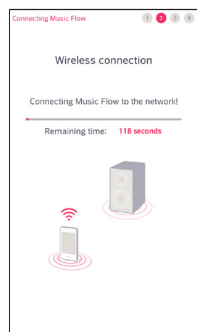
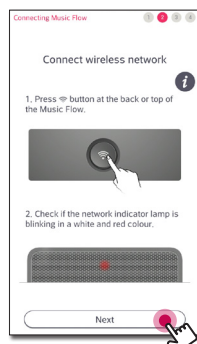
4. Select [Wireless connection] on the screen.



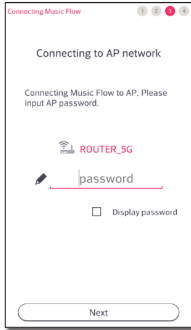
5. Press the **Wi-Fi SETUP** button on the rear of the speaker. Then  Network status LED blinks white and red alternately.



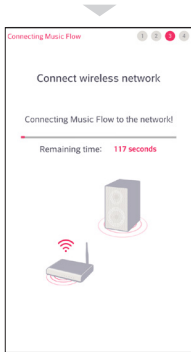
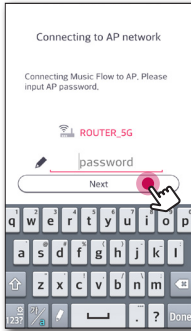
6. Then select [Next] on the screen.



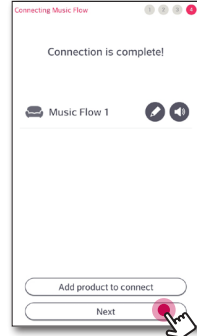
7. If you have a password for your network, the security screen appears on your smart device. Enter your password.



8. Then select [Next] on the screen.



9. Select [Next] to complete the connection.



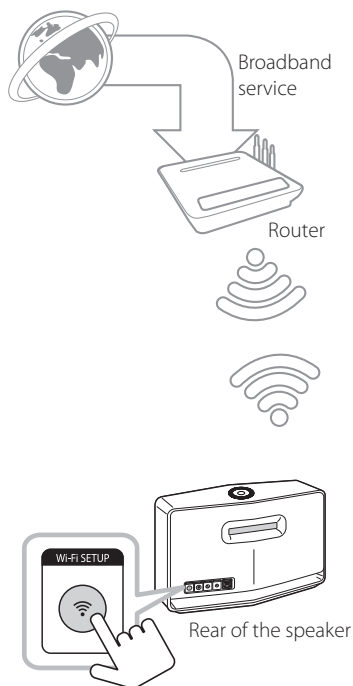
After connecting the speaker, you can see the list of connected music storage device and music curation screen. Follow the instructions on the screen.

Note

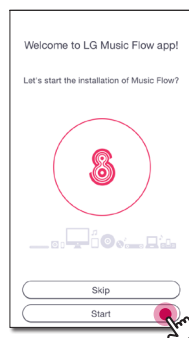
If the speaker fails to connect to your network or its network connection operates abnormally, place the speaker closer to your router and try again.

Connecting the speaker to your Network via the Wi-Fi Setup Method (iOS)

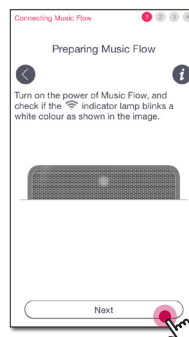
Connection overview



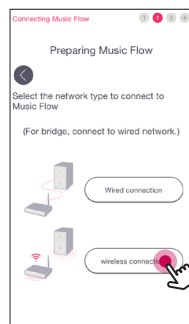
1. Plug the speaker into an electrical outlet. The Network status LED starts to blink white.
2. On your smart device, launch Music Flow Player app. Select [Start] to install the speaker.



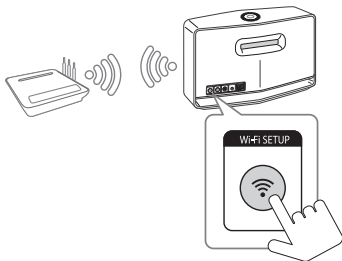
3. Check the Network status LED on the speaker and select [Next] to go to the next screen.



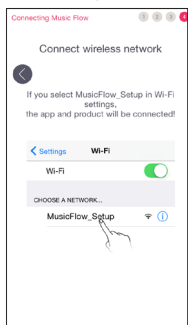
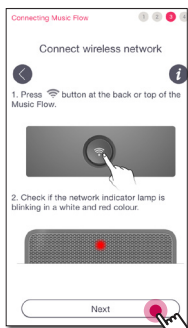
4. Select [Wireless connection] on the screen.



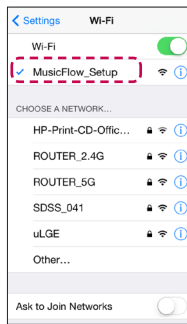
5. Press the **Wi-Fi SETUP** button on the rear of the speaker. Then  Network status LED blinks white and red alternately.



6. Then select [Next] on the screen.



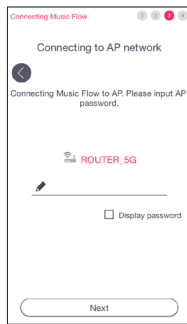
7. On your iOS device, go to iOS setting -> Wi-Fi setting and select "MusicFlow_Setup" to connect.



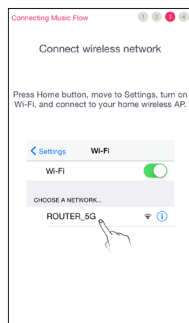
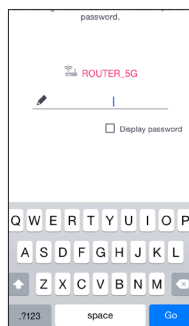
Note

- If "MusicFlow_Setup" is not on the list, scan for available Wi-Fi networks again.
- When your smart device is connected to "MusicFlow_Setup", you cannot use the internet.

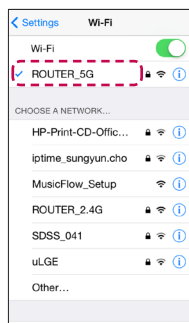
8. Once the network connection is completed, return to the Music Flow Player app.



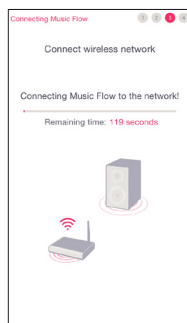
9. If you have a password for your network, the security screen appears on your smart device. Enter your password.



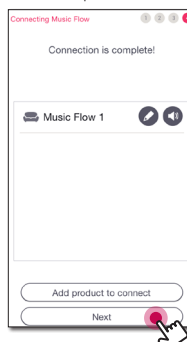
10. On your iOS device, go to iOS setting -> Wi-Fi setting and select wireless router to connect.



11. Once the network connection is completed, return to the Music Flow Player app.



12. Select [Next] to complete the connection.



After connecting the speaker, you can see the list of connected music storage device and music curation screen. Follow the instructions on the screen.

! Note

If the speaker fails to connect to your network or its network connection operates abnormally, place the speaker closer to your router and try again.

Notes on Network Connection

- Many network connection problems during set up can often be fixed by re-setting the router. After connecting the speaker to the home network, quickly power off and/or disconnect the power cable of the home network router or cable modem. Then power on and/or connect the power cable again.
- Our company is not responsible for any malfunction of the speaker and/or the internet connection feature due to communication errors/malfunctions associated with your broadband internet connection or other connected equipment.
- The wireless network operate at 2.4 GHz radio frequencies that are also used by other household devices such as cordless telephone, Bluetooth® devices, microwave oven, and can be affected by interference from them.
- Turn off all unused network equipment in your local home network. Some devices may generate network traffic.
- If the speaker fails to connect to your network or its network connection operates abnormally, place the speaker closer to your router and try again.
- Depending on your home network environment and the performance of wireless router, it may not work well to connect the speaker to your wireless router.
- You cannot connect the speaker to wireless router which has hidden SSID.
- The connection you've made may be disconnected if you select other application or change the setting of the connected speaker via "Music Flow Player" app. In such a case, please check the connection status.
- Even After connection of Music Flow Player app, music may be output from your smart device. In this case, select the connected speaker on the playback screen.
- Depending on the speed of your network, playback of online contents may not work well.
- Wireless signal interference may lead to disconnection of network or stopping playback.
- You need to turn the speaker's power off and on again if you restart the router.
- You need to perform a factory set and setup the network connection for speaker, if you install new router.

Connecting the speakers to your Home Network (Additional)

You can enjoy the music with multiple speakers and single smart device you have.

Requirements

- Wireless router
- Smart device (Android or iOS)
- Another speaker
- Music Flow R1 (MR140) (Optional)

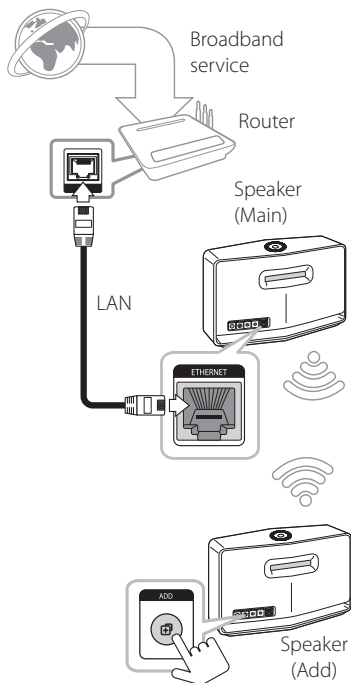


Note

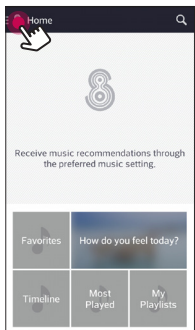
Signal interference may lead to stop playback.

Adding another speaker

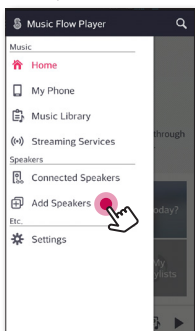
Connection overview



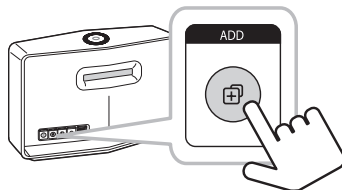
1. Connect the speaker (Main) to your network.
Refer to "Connecting the speaker to your home network" on page 12.
2. On your smart device, select the Music Flow Player app. Tap the [Home] menu.



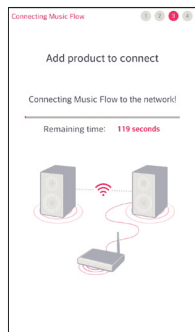
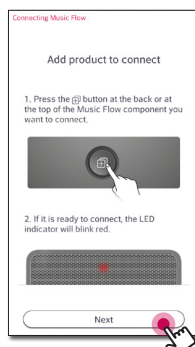
3. Select the [Add Speakers] on the side menu.



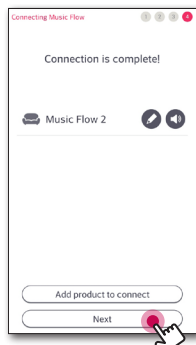
4. Press the **ADD** button on the rear of the speaker (Add). Then Network status LED blinks red.



5. Then select the [Next] on the screen.



6. Select [Next] to complete the connection.



Note

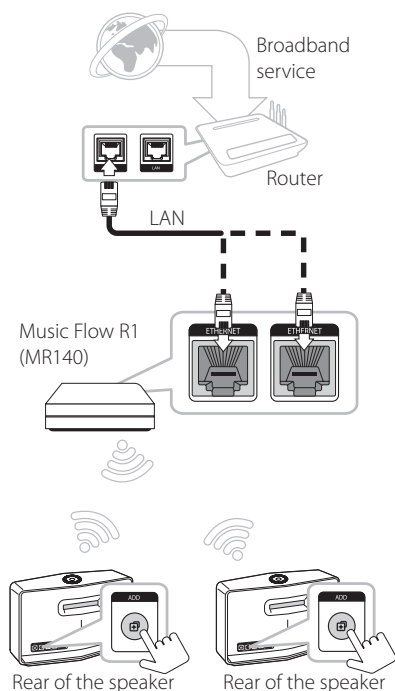
Speakers may be not connected if the distance between the speaker (Main) connected by LAN cable and the speaker (Add) to be connected is too far. In this case, you can use Music Flow R1 to extend the range of the signal.

Connecting the speakers to your Network with a Music Flow R1

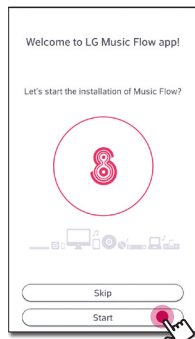
Connecting to Router

Using the Music Flow R1 makes you connect the speakers placed farther.

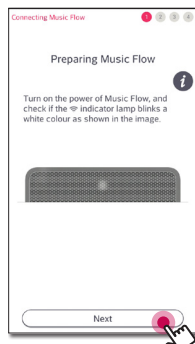
Connection overview



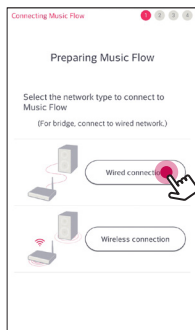
1. Attach the Music Flow R1's power cord to the power port on the rear of the Music Flow R1 and then plug the power cord into an electrical outlet.
2. The power LED on the front of Music Flow R1 turns on. On your smart device, launch Music Flow Player app. Select [Start] to install the speaker.




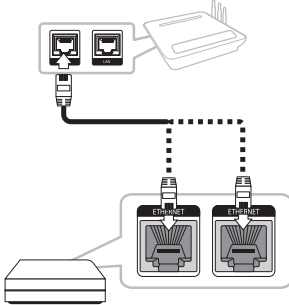
3. Check the Network status LED on the speaker and select [Next] to go to the next screen.



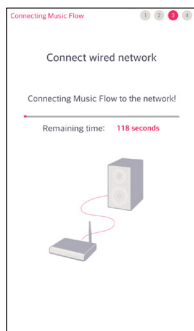
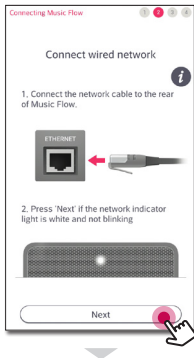
4. Select [Wired connection] on the screen.



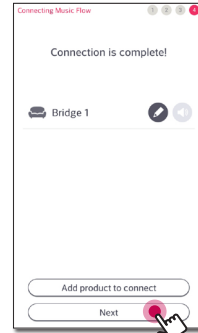
5. Connect one end of the LAN cable to the speaker's ETHERNET port, and connect the other end to your wireless router. Wait a moment until  Network status LED stops blinking and stays white.



6. Then select [Next] on the screen.



7. Select [Next] to complete the connection.



8. Connect the speaker to Music Flow R1. Refer to the "Adding another speaker" on page 21.

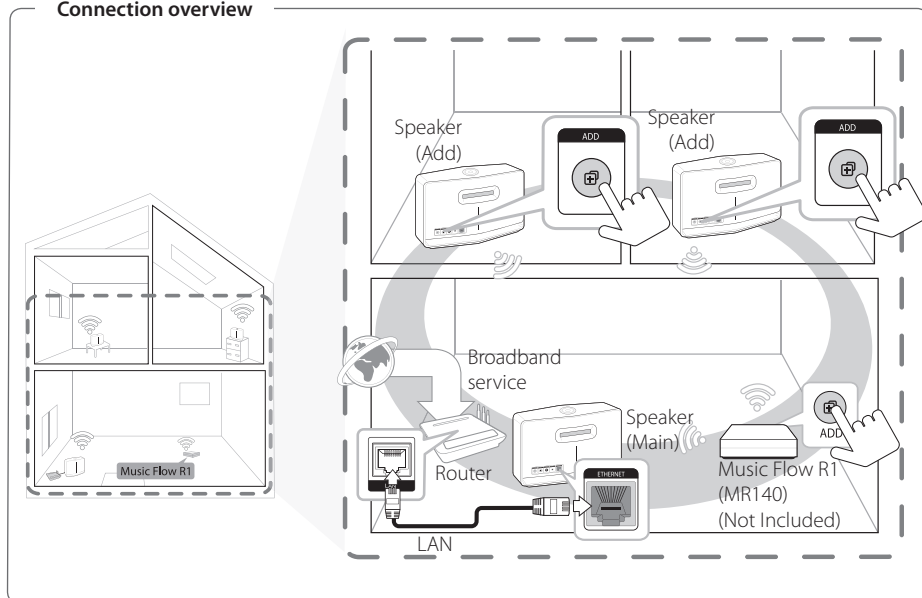
! Note

If the connection fails, run the application again and follow the instructions in the application guide on your smart device to connect to the speaker and the Music Flow R1.

Connecting to the Speaker

Using the Music Flow R1 makes you extend wireless network range between the speaker and another speaker.


Connection overview

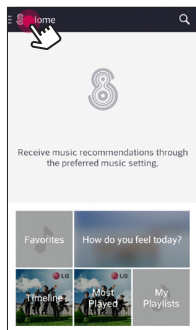


- You can use the Music Flow R1 as a wireless network range extender.
- The Music Flow R1 is not included and it can be purchased nearest LG Electronics store.

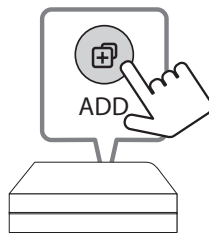
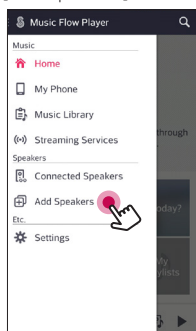
! Note

If speakers are connected wireless only, it is recommended that security mode of your access point is set to OPEN or AES.

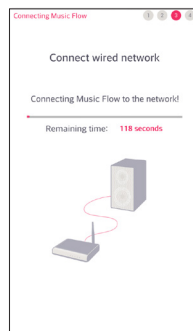
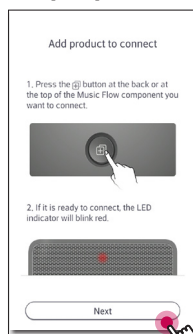
1. Connect the speaker (Main) to your home network. (page 12)
2. Attach the Music Flow R1's power cord to the power port on the rear of the Music Flow R1, and then plug the power cord into an electrical outlet.
3. The power LED on the front of Music Flow R1 turns on. On your smart device, launch Music Flow Player app. Tap the [Home] menu.
5. Press the **ADD** button on the rear of the Bridge (R1). Then  Network status LED blinks white and red alternately.



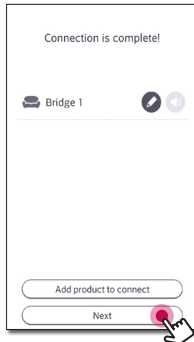
4. Select the [Add Speakers] on the side menu.



6. Then select the [Next] on the screen.



7. Select [Next] to complete the connection.

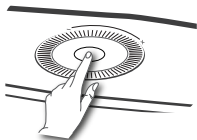


Notes on Music Flow R1

- You can use the Music Flow R1 as a wireless network range extender.
- The Music Flow R1 is not included and it can be purchased nearest LG Electronics store.
- If the connection fails, run the application again and follow the instructions in the application guide on your smart device to connect to the speaker and the Music Flow R1.

Basic Operations

Using / I / F button



Power On

Press the  / I / F button.


Standby mode

Press and hold the  / I / F button for 5 seconds.
(page 46)

Note

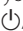
The speaker switches to the standby mode if there is no music playback or no button operation for 20 minutes.

Changing the mode

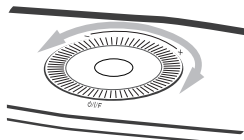
When turning on the speaker, you can change the mode. Please  / I / F button repeatedly, the mode is changed with status LED.

(Network -> Bluetooth -> Portable In)

Note

If you do not connect external device with portable cable, you cannot select the Portable In mode using  / I / F button.

Using volume button



Turn the wheel clockwise to increase volume, or counterclockwise to decrease volume.

Enjoying the Music with Music Flow Player app

With Music Flow Player app, you can play music in your smart device.

Note

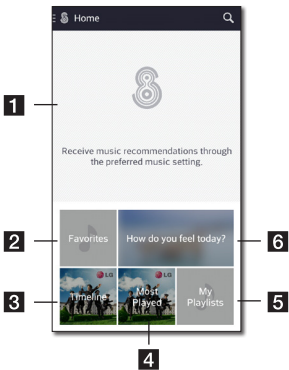
- For more detailed instruction about Music Flow Player app, switch on the [User Guide] in [Settings] > [General] on the side menu.
- Some of the content in this part may differ from Music Flow Player app depending on the application's version.

Preparation

1. Check the network connection with the speaker. (page 12)
2. To use the speaker, you must download and install the Music Flow Player app. (page 10)

Overview of Home menu

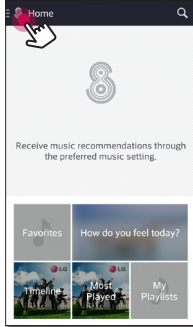
Launch Music Flow Player app on your smart device. The [Home] appears.



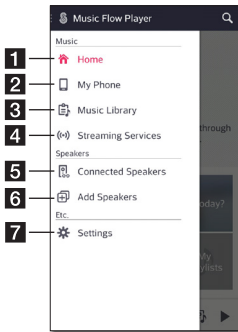
- 1 Recommendation** – Click the sentence area to see the recommendation.
- 2 Favorites**– Displays the favorites songs
- 3 Timeline** – Displays the songs played on this speaker.
- 4 Most Played** – Displays the songs most played on this speaker.
- 5 My Playlists** – Displays the playlists.
- 6 How do you feel today?** – Displays the music curation screen.

Overview of the side menu

1. Launch Music Flow Player app on your smart device. The [Home] appears.
2. Tap the [Home] menu.



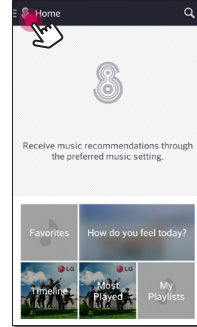
3. Side menu appears.



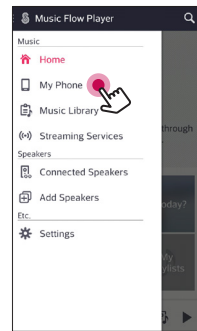
- 1 Home** – Displays the Home menu.
- 2 My Phone** – Displays the songs on this smart device.
- 3 Music Library** – Displays the songs on the connected devices (Media server).
- Streaming Services** – Displays the online services. You can enjoy the online radio and music.
- 5 Connected Speakers** – Displays the connected speaker.
- 6 Add Speakers** – Goes to the speaker installation screen.
- 7 Settings** – Displays the settings menu.

Playing a song

1. Launch Music Flow Player app on your smart device. The [Home] appears.
2. Tap the [Home] menu.



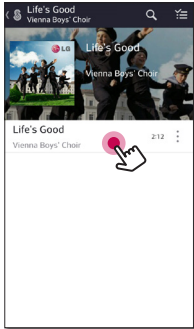
3. Side menu appears.
Select the [My Phone] on the side menu.



4. Select the desired album.

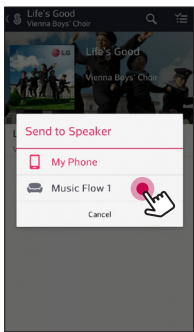


5. Select the desired song. Then selected song is displayed and played.



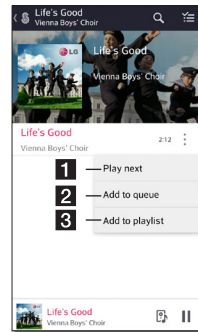
Note

If the speaker is not selected, the selecting speaker pop-up appears. Select a desired speaker.



Managing a playlist

On an album screen, tap the [:] of the desired song. The pull down menu appears.



- 1 Play next** – Selects music to play next.
- 2 Add to queue** – Adds to queue list.
- 3 Add to playlist** – Adds to a desired playlist.

Note

Depending on your wireless environment, playing a song with the speaker may not work smoothly.

Overview of Playback

You can confirm and adjust various information on the playback screen.



1 Displays the speaker that music plays through.

Displays current playing music.

- Repeats the desired contents. Every time you click it, the state changed in the (Repeat One) - (Repeat All) - (Repeat Off) order.

2

- Shuffles the music on the list. Music will be played in random order.

Adjusts playback.

3

- Adjusts the volume.
- Adjusts the sound effect.

Tap the , various option appears.

4

- Saves the music to the [Favorites]. You can find [Favorites] on [Home] tab
- Adds music to [My Playlist].
- Shares on the social network services.
- Searches for more music that is similar to the music being played.

5

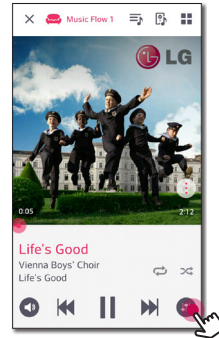
- Edits the current playlist.
- Selects a speaker to play.
- Displays music menu.

Selecting Sound effect

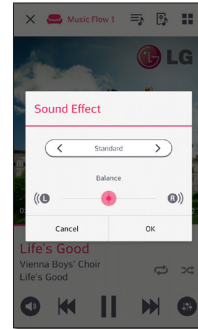
This speaker has a number of pre-set surround sound fields. You can select a desired sound mode by tapping .

The displayed items for the equalizer may be different depending on sound sources and effects.

- During playback, tap the as below.



- Tap the < or >.



You can select the various sound effects.

Sound Effect	Description
Standard	You can enjoy the sound without equalizer effect.
Bass	The Bass is Bass Blast. During playback, reinforce the treble, bass and surround sound effect.
Flat	Provides the neutral sound effect
Boost	Boosts the mid-range for sound reinforcement.
Treble / Bass	Reinforces the treble and bass.
User EQ	You can adjust the sound effect.



Note

When you play the songs with smart device's speaker, the sound equalizer is not supported.

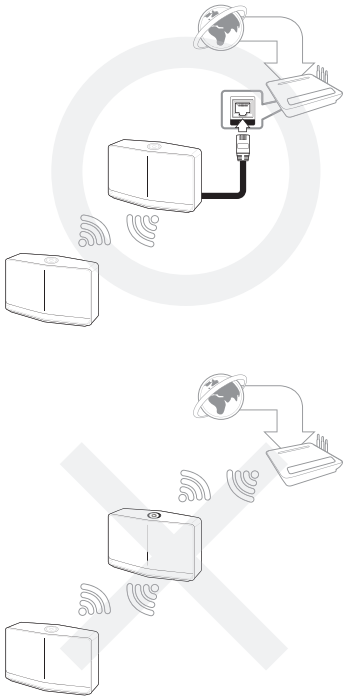
Group Playback

You can group multiple speakers linked to the Music Flow Player app and play the same music through all the connected speakers in the same group.

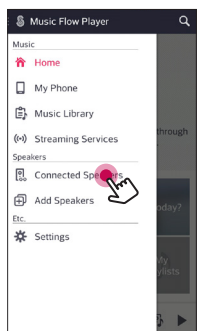


Note

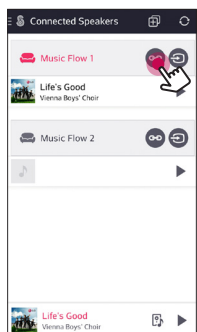
If you want to enjoy the group playback, at least one speaker should be connected by LAN cable. If the speakers are connected only wirelessly, disconnect all the wireless connections and reconnect them after connecting one wired.



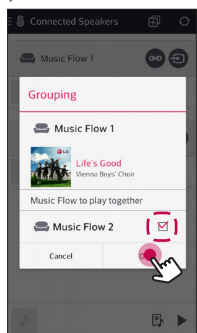
1. Select [Connected Speakers] on the side menu of Music Flow Player app.



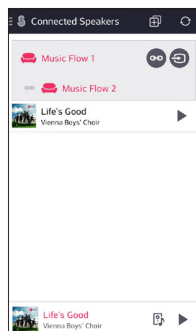
2. Connected speakers appear. Select the [] on the speaker desired song plays through.



3. Grouping option appears. Tap the checkbox to select the speaker you want to play with. Then select [OK].



4. The speakers is ready to group playback.



! Note

- If the speakers are not grouped, you can enjoy different music on each speaker.
- It is recommended to connect less than 5 devices for the smooth playback.
- The weak signal because of the long distance between speakers or wireless router and signal interference may cause abnormal playback.
- Depending on your wireless environment, the grouping may be broken.
- For smooth group playback, it is recommended to select the speaker connected by LAN cable as a master speaker. If you set the master speaker connected wirelessly, placed closer from the speaker connected wired.

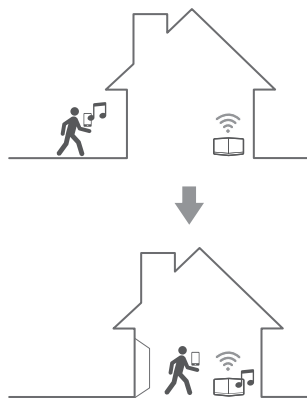
Seamless playback

You can easily change the playing speaker from your smart device or the speaker to the another speaker without pause.

! Note

- It is not supported when you go out of the house with your smart device.
- Wi-Fi function on smart device must be turned on.
- If the source is Portable In and Bluetooth, seamless play is not supported. (Media server and online streaming service are supported).
- In case of the online streaming service, the music you are listening to is played from the beginning.
- On seamless play, each speaker keeps its existing volume value. If no sound coming out from the speaker during playback, check the switched speaker's volume is set to 0.

Changing playing speaker from a smart device to a speaker

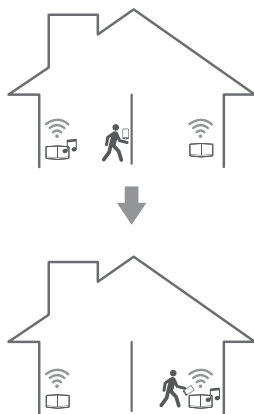


1. If the smart device playing music is carried from outside to a room where the connected speaker is in, the pop-up window on the smart device will appear to ask you which speaker you want to play music through.
2. Select the speaker on the pop-up list, the music you are listening to is played through without a pause.

! Note

- Pop-up window disappears automatically in below cases,
 - When you select the speaker on pop-up list.
 - 10 seconds later after pop-up window appears. (Android Only)
- The latest connection is placed at the top of the list on the pop-up window.

Changing the active speaker to a different speaker without a pause



You can change the playing speaker to the another speaker which is in the room you are in now using NFC tagging.

! Note

- Music Flow Player app should be displayed on the smart device's screen.
- In case of the grouped speakers, all the speakers in the group are played when one of the speakers in the group is NFC tagged.
- Only Android device is available.

Setting the Speaker with Music Flow Player app

With Music Flow Player app, you can set the connected speaker in your smart device.

Note

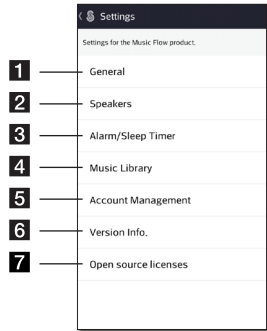
- For more detailed instruction about Music Flow Player app, switch on the [User Guide] in [Settings] > [General] on the side menu.
- Some of the content in this part may differ from Music Flow Player app depending on the application's version.

Preparation

1. Check the network connection with the speaker. (page 12)
2. To use the speaker, you must download and install the Music Flow Player app. (page 10)

Overview of setting menu

1. Launch Music Flow Player app on your smart device.
2. Select [Settings] on the side menu.



1 General – Sets for easier use of the speaker.

2 Speakers – Sets connected speaker.

3 Alarms/Sleep Timer – Wakes on and off the speaker at a designated time.

4 Music Library – Manages the music Library.

5 Account Management – Manages social networking service and streaming services.

6 Version Info. – Updates the speaker to the latest version.

7 Open source licenses – Displays Open source licenses.

[General] Menu

Sets for easier use of the speaker.

Lock Screen Setting (Android only)

This function allows you to display the Music Flow Player on the lock screen. (Lock screen setting is [ON] by default.)

User Guide

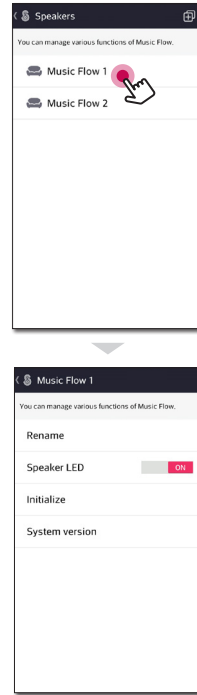
This function allows you to display or delete the guide on the menu.

Music Curation

Goes to the music curation.

[Speakers] Menu

You can adjust speakers connected to your network.



- 1 Rename** – Renames the speaker.
- 2 Speaker LED** – Turns on or off speaker's LED indicator. (LED Indicator is [ON] by default.)
- 3 Initialize** – Resets the speaker.
- 4 System version** – Displays the current system version.


[Alarms/Sleep Timer] Menu

Turns on and off the speaker at a designated time.

Alarms

Speaker will let you know when it is time.

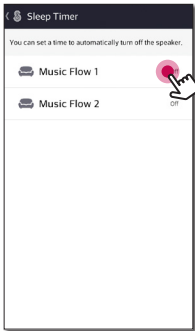
 Deletes selected alarm.

 Adds new alarm.

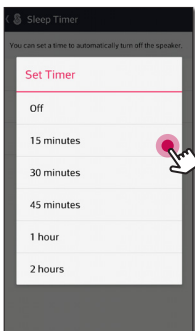
Sleep Timer

Sets a time to automatically turn off the speaker.

1. Select the speaker to set timer on [Sleep Timer] in the [Alarms/Sleep Timer] menu.



2. Set the desired timer on selected speaker.



[Music Library] Menu

Manages the music library index.

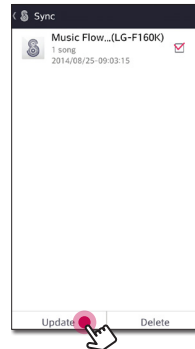
Sync Schedule

You can set the time to update the Music index automatically. Select the days and time to perform the update. (Sync Schedule is [OFF] by default.)

Sync

Manages the music library index.

1. Select the desired server and click the checkbox.



2. Tap the [Update] to update the desired server.

[Account management] Menu

Manages various social networking service and online streaming service.

! Note

In case of Music Flow Player app for iOS, social networking service is supported with iOS 6.0 or later.

[Update] Menu

Updates the speaker to the latest version.

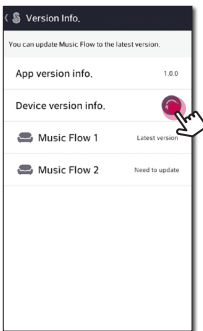
App version info.

Displays the current application's version.

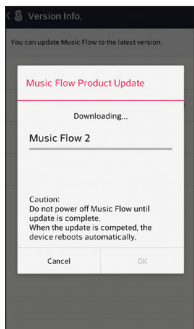
Device version info.

Updates the latest speaker's firmware version.

1. Find the speakers need to update and tap the [🔄].



2. Starts the software update.



Using a Bluetooth Wireless Technology

About Bluetooth

Bluetooth® is wireless communication technology for short range connection.

The sound may be interrupted when the connection interfered by the other electronic wave or you connect the bluetooth in the other rooms.

Connecting individual devices under **Bluetooth®** wireless technology does not incur any charges. A mobile phone with **Bluetooth®** wireless technology can be operated via the Cascade if the connection was made via **Bluetooth®** wireless technology.

Available Devices : Android device, iOS device

Bluetooth profiles

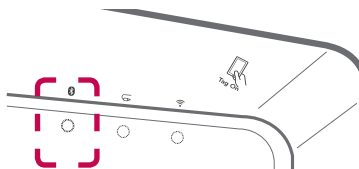
In order to use Bluetooth wireless technology, devices must be able to interpret certain profiles. This speaker is compatible with following profile.

A2DP (Advanced Audio Distribution Profile)

Listening to Music of a Bluetooth Device

Before you start the pairing procedure, make sure that the Bluetooth feature on your smart device is turned on. Refer to your Bluetooth device's user guide. Once a pairing operation is performed, it does not need to be performed again.

1. Plug the speaker into an electrical outlet. Press **⏻/I/F** button on the speaker to select bluetooth mode. Then **📶** Bluetooth status LED starts to blink with white.



2. Operate the Bluetooth device and perform the pairing operation. When searching for this speaker on your Bluetooth device, a list of the devices found may appear in the Bluetooth device display depending on the type of Bluetooth device. Your speaker appears as "Music Flow H5 (or H7) (XX:XX)".
3. Select the "Music Flow H5 (or H7) (XX:XX)".

! Note

XX:XX means the last four digits of BT address. For example, if your speaker has a BT address such as 9C:02:98:4A:F7:08, you will see "Music Flow H5 (or H7) (F7:08)" on your Bluetooth device.

4. When this speaker is successfully connected with your Bluetooth device, the **📶** Bluetooth status LED stops blinking.

! Note

- Depending on the type of the Bluetooth device, some devices have a different pairing way.
- Try pairing procedure if your device name is not in the device list.


5. Listen to music.

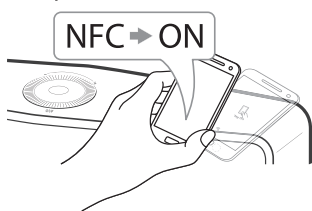
To play music in your Bluetooth device, refer to your Bluetooth device's user guide.

According to your Bluetooth device's volume level, the volume level of Bluetooth will be adjusted.

NFC for Easy Pairing (Android Only)

You can connect NFC-enabled android devices to the speaker with Bluetooth function.

1. Activate the NFC feature on your NFC-enabled android device.
2. Press **⏻/I/F** button to turn on the speaker.
3. Tag the back of your NFC-enabled smart device over the  mark on the speaker.



4. Select the desired track from your smart device's music list and the track you selected is played.

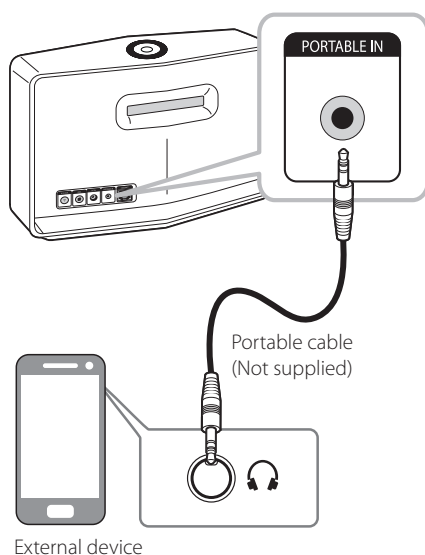
! Note


- NFC feature is not supported with iOS.
- The NFC feature is built into Android devices running Android O/S 4.1.2 or later.
- You must activate the NFC feature on your NFC-enabled smart device (Android).
- Depending on the NFC-enabled android device's manufacturers and brands, NFC feature may not work.
- If your NFC-enabled device's screen is locked, it cannot read the NFC.
- If your device's case is plated with chrome, NFC is unavailable. Depending on your case's material or thickness, NFC may not be read well.
- When you are enjoying the music with Music Flow Player app, seamless playback is activated instead of Bluetooth pairing.

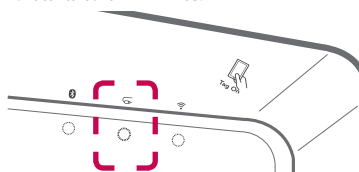
Listening to Music from Your External Device


The speaker can be used to listen to the music from many types of external device.

1. Connect the external device to the **PORTABLE IN** on the speaker.



2. Press **⏻/I/F** button repeatedly to select Portable In mode. Then  Portable In status LED starts to blink white.



3. When this speaker is successfully connected with your external device, the  Portable In status LED stops blinking.
4. Select the song to play on your smart device's music list.

Using Media Server for PC

Media server Software allows users to access audio files stored in media server and enjoy them on this speaker via home networking.

Before connecting to PC to play a file, Media server Software should be installed on your PC.



Note

Make sure that wireless network environment using a router is installed at your home.

- **Windows : Music Flow PC Software**
- **Mac OS : Nero MediaHome 4 Essentials**

Music Flow PC Software for windows

About Music Flow PC Software

Music Flow PC Software makes you enjoy the audio files stored on your media server (PC) via the speaker.

Downloading Music Flow PC Software

1. Start up your computer, visit <http://www.lg.com>. If necessary, select your region.
2. Click support tab.
3. Fill your model name on the cover of owner's manual in search bar.
4. Find and download the "Music Flow PC Software" file.

Installing Music Flow PC Software

1. Before installation, close all running programs including firewall and Anti-Virus programs.
2. Unzip and double-click "Setup.exe" to install Music Flow PC Software. The installation is prepared and the installation wizard appears.
3. Follow the directions of the installation wizard displayed on the screen.
4. Click the [Exit] button to complete the installation.



Note

- Music Flow PC Software is not supported with Mac OS. In case of Mac OS, you can use the Nero MediaHome.
- The Music Flow PC Software is a customized software edition only for sharing files and folders to this speaker.
- If you want a full explanation about Music Flow PC Software, click the question marked icon on home menu.

System requirements (Windows PC)

- CPU : Intel® 2.0 GHz or AMD Sempron™ 2000+ processors
- Memory : 1 GB of free RAM
- Graphics card : 64 MB video memory, minimum resolution of 1024 x 768 pixels, and 16 bit color settings
- Free Disk Space : 200 MB
- Windows® XP (Service Pack 2 or higher), Windows Vista®, Windows® 7, Windows® 8.0, Windows® 8.1
- Windows® Media Player® 11.0 or higher
- Network environment: 100 MB Ethernet, WLAN

Sharing music files

On your computer, you must share the folder contained music files to play them on this speaker.

This parts explains the procedure for selecting the shared folders on your computer.

1. Double-click the "Music Flow PC Software" icon.
2. Click [✖] icon in the upper-right-hand corner of the screen. The setting menu appears.
3. On the setting menu, click [📁] icon on the left to go to the sharing file menu.
4. On the sharing file menu, Click [📁] icon to open the [Browse Folder] window.
5. Select the folder containing the files you want to share. The selected folder is added to the list of shared folders.

Nero MediaHome 4 Essentials for Mac OS

About Nero MediaHome Essentials

Nero MediaHome 4 Essentials is a software for sharing video, audio and photo files stored on your computer to this speaker as a digital media server.

Downloading Nero MediaHome Essentials

1. Start up your computer, visit <http://www.lg.com>. If necessary, select your region.
2. Click support tab.
3. Fill your model name on the cover of owner's manual in search bar.
4. Find and download the "Nero MediaHome 4 Essentials" file.

! Note

The Nero MediaHome Essentials software (for Mac OS) can be also downloaded at

- <http://www.nero.com/download.php?id=nmhlgemac>

Installing Nero MediaHome Essentials

1. Before installation, close all running programs including firewall and Anti-Virus programs.
2. Unzip and double-click "Setup.exe" to install Nero MediaHome Essentials. The installation is prepared and the installation wizard appears.
3. Follow the directions of the installation wizard displayed on the screen.
4. Click the [Exit] button to complete the installation.

System requirements (Macintosh)

- Mac OS X 10.5 (Leopard) or 10.6 (Snow Leopard)
- Macintosh computer with an Intel x86 processor
- Hard drive space: 200 MB hard drive space for a typical installation of Nero MediaHome standalone
- Memory: 256 MB RAM

Sharing music files

On your computer, you must share the folder contained music files to play them on this speaker. This parts explains the procedure for selecting the shared folders on your computer.

1. Double-click the "Nero MediaHome 4 Essentials" icon.
2. Click [Network] icon on the left and define your network name in the [Network name] field. The Network name you enter will be recognized by your player.
3. Click [Shares] icon on the left.
4. Click [Local Folders] tab on the [Shares] screen.
5. Click [Add] icon to open the [Browse Folder] window.
6. Select the folder containing the files you want to share. The selected folder is added to the list of shared folders.
7. Click [Start Server] icon to start the server.

! Note


- The Nero MediaHome Essentials is a customized software edition only for sharing files and folders to this speaker
- If the shared folders or files are not displayed on the player, click the folder on the [Local Folders] tab and click [Rescan Folder] at the [More] button.
- Visit www.nero.com for more information and software tools.

Standby mode



The speaker switches to the standby mode if there is no music playback or no button operation.

Standby mode


Option 1.

If network is disconnected and there is no music playback and no button operation for 20 minutes, the speaker switches to the standby mode. Then  Network status LED turns red.

Option 2.

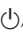
If you press and hold the  button for 5 seconds, the speaker switches to the standby mode. Then  Network status LED turns red.

Network standby mode

When network is connected but music is not played and buttons are not pressed for 20 minutes, the speaker switches to the network standby mode. Then white  Network status LED dimmed.



Note

On the Network Standby Mode, if you press  button, the latest music playlist will be played.

Reset the Speaker

If the speaker is not turned on or doesn't respond, reset the speaker.

Resetting the speaker

- Press and hold the **ADD** button until you hear the beep sound once. Then all wireless network ports are deactivated and the stored wireless network information is deleted.
- Press and hold the **ADD** button until you hear the beep sound twice. You can reset the speaker to its original factory settings.

Resetting the Music Flow R1

Press and hold the **ADD** button for 8 seconds to delete the stored network information.



Note

After resetting the Music Flow R1, you must unplug and plug in your speaker for a proper connection with the Music Flow R1.

Troubleshooting

General

Symptoms	Cause & Solution
The power does not turn on.	Is the power cord plugged into the outlet? <ul style="list-style-type: none"> Connect the power plug to the outlet.
A function does not work when the button is pressed.	Is there static electricity in the air? <ul style="list-style-type: none"> Disconnect the power plug and connect it again.
Sound is not produced.	Is the volume set to minimum? <ul style="list-style-type: none"> Adjust the volume.
The speaker doesn't work properly.	Is the speaker plugged in? <ul style="list-style-type: none"> Plug in the speaker. Does the speaker's front status LED indicator remain? <ul style="list-style-type: none"> Check whether the Wi-Fi router you're using has been certified for Wi-Fi. Unplug the speaker, plug it back in, and then reconnect it to the router. Reset the speaker. When using a Music Flow R1 <ul style="list-style-type: none"> Make sure that the smart device and the Music Flow R1 are connected to the same Wi-Fi network. Make sure that the Music Flow R1's indicator LED show that it is working correctly. If the problem persists, reset the Music Flow R1. Unplug, then plug in the Music Flow R1. Then, unplug and plug in the speaker. If you experience troubles with connecting the Music Flow R1 and speaker, try relocating the speaker so that the speaker is closer to the wireless router or Music Flow R1.

Network

Symptoms	Cause & Solution
Cannot connect the speaker to your home network.	The wireless communication may be interrupted from household devices that are using radio frequencies. Move the speaker away from them.
Media servers are not displayed on the device list.	<ul style="list-style-type: none">• The firewall or anti-virus software on your media server is running. Turn off the firewall or anti-virus software running on your media server.• Make sure that the speaker is connected to the local area network that your media server is connected.
I cannot group speakers.	<p>Is the speaker connected to the network via Wi-Fi?</p> <ul style="list-style-type: none">• If you want to enjoy the group playback, at least one speaker should be connected by LAN cable.• If the speakers are connected only wirelessly, disconnect the wireless connections and reconnect them after connecting wired speaker.
Music Flow Player (Speaker or Bridge) doesn't work properly.	<p>Is the Music Flow Player (Speaker or Bridge) plugged in?</p> <ul style="list-style-type: none">• Plug in the Music Flow Player (Speaker or Bridge). <p>Is the LAN cable connected to the wireless router and the Music Flow Player (Speaker or Bridge) properly?</p> <ul style="list-style-type: none">• Connect the LAN cable to the Ethernet port on the back of the Music FlowPlayer (Speaker or Bridge) and to your wireless router.• By using the Music Flow R1 (Bridge) for extending the signal without wired connection, at least one speaker must be connected with LAN cable. <p>When the Music Flow Player (Speaker or Bridge) is plugged in, do the Music Flow Player (Speaker or Bridge)'s LED show it's operating properly?</p> <ul style="list-style-type: none">• If you experience troubles with connecting the Music Flow Player (Speaker or Bridge), try relocating the speakers so that the speakers is closer to the wireless router or Music Flow Player (Speaker or Bridge). <p>If you restart the router?</p> <ul style="list-style-type: none">• You need to turn the speaker's power off and on again. <p>If you install new router.</p> <ul style="list-style-type: none">• You need to perform a factory set and setup the network connection for speaker.

Application and PC Software

Symptoms	Cause & Solution
Music Flow Player app doesn't work properly.	<p>Does an error occur when accessing the app?</p> <ul style="list-style-type: none"> • Make sure that your smart device is compatible with the app. • Make sure that the Music Flow Player app is the latest version. • Make sure that the speaker's front LED turns from red to white. • If used with a Music Flow R1 <ul style="list-style-type: none"> - Make sure that the Music Flow R1 and the smart device are connected to same router. - Make sure that the Music Flow R1's indicator LED shows that it is working correctly. - If you experience troubles with connecting the Music Flow R1 and speaker, try relocating the speaker so that the speaker is closer to the wireless router or Music Flow R1.
Music Flow PC Software doesn't work properly.	<p>Does the firewall on your PC or Mac set to enable?</p> <ul style="list-style-type: none"> • Disable all your firewalls and try to connect again. Refer to your firewall's instruction or website. <p>Is the LAN cable connected to the wireless router and your PC or Mac properly?</p> <ul style="list-style-type: none"> • Ensure that the speaker and your PC or Mac are correctly connected to the local area network and can access the internet. • The wireless communication may be interrupted from household devices that are using radio frequencies. Move the speaker and your PC or Mac away from them.

File requirement

Available File extensions : ".mp3", ".wma", ".flac", ".m4a", ".aac", ".ogg", ".wav"

Sampling frequency: within 32 to 48 kHz (mp3, wma), up to 192 kHz/24 bit (flac)

Bit rate: up to 320 kbps (mp3, wma)

- The file requirements are not always compatible. There may have some restrictions by file features and media server's ability.
- Some wav files are not supported on this speaker.
- Depending on the types of file or ways of recording, it may not play back.
- Some DRM-loaded files are not supported on this speaker.

Trademarks and Licenses



Bluetooth® wireless technology is a system which allows radio contact between electronic devices within a max. range of 10 meters.



Connecting individual devices under **Bluetooth®** wireless technology does not incur any charges. A mobile phone with **Bluetooth®** wireless technology can be operated via the Cascade if the connection was made via **Bluetooth®** wireless technology.

The **Bluetooth®** word mark and logos are owned by the **Bluetooth®** SIG, Inc. and any use of such marks by LG Electronics is under license.


Other trademarks and trade names are those of their respective owners.

About Status LED's Condition








Bluetooth

Condition	Color	
Waiting for Bluetooth pairing		Blinks
Bluetooth paired		

Portable In









Condition	Color	
Connected portable cable		

Network



Condition	Color	
Waiting for network connection		Blinks
Connected		
Connecting (Wi-Fi SETUP button is pressed)		Blinks
Connecting (ADD button is pressed)		Blinks
Standby mode		
Network standby mode		
Grouping set (First group was set)		



Note

- When you set the group at first,  Network status LED turns green.
- The additional groups are set, the  Network status LED color is changed in group order.
( >  >  >  > )
- If the grouped speakers switch to the network standby mode, the brightness of  Network status LED gets dark.

Specifications

General	
Power Supply	18 V  2.67 A (AC adapter)
Power consumption	NP8740 : 12 W NP8540 : 10 W
	Networked standby : 5.4 W
AC adapter	Model : DA-48A18 Manufacturer: Yang Ming Industrial Input: 100 - 240 V ~ 50/60 Hz Output: 18 V  2.67 A
Dimensions (W x H x D)	NP8740 : Approx. 370 mm x 232 mm x 110 mm without foot NP8540 : Approx. 340 mm x 207 mm x 88 mm without foot
Net Weight (Approx.)	NP8740 : 4.1 kg NP8540 : 3.25 kg
Operating temperature	5 °C to 35 °C
Operating humidity	5 % to 90 %

Inputs	
PORTABLE IN	400 mVrms (3.5 mm stereo jack)

Amplifier	
Stereo mode	NP8740 : 35 W + 35 W (4 Ω at 1 kHz)
	NP8540 : 20 W + 20 W (6 Ω at 1 kHz)
T.H.D	10 %

Speakers	
Type	Built-in
Impedance Rated	NP8740 : 4 Ω NP8540 : 6 Ω
Rated Input Power	NP8740 : 35 W NP8540 : 20 W
Max Input Power	NP8740 : 70 W NP8540 : 40 W

System	
ETHERNET (LAN) port	Ethernet jack x 1, 10 BASE-T/100 BASE-TX
Wireless LAN (internal antenna)	Integrated IEEE 802.11n (Draft 2.0) wireless networking access, compatible with 802.11a/b/g/n Wi-Fi networks.

- Design and specifications are subject to change without notice.

Handling the Speaker

When shipping the speaker

Please save the original shipping carton and packing materials. If you need to ship the speaker, for maximum protection, re-pack the speaker as it was originally packed at the factory.

Keeping the exterior surfaces clean

- Do not use volatile liquids such as insecticide spray near the speaker.
- Wiping with strong pressure may damage the surface.
- Do not leave rubber or plastic products in contact with the speaker for a long period of time.

Cleaning the speaker

To clean the player, use a soft, dry cloth. If the surfaces are extremely dirty, use a soft cloth lightly moistened with a mild detergent solution. Do not use strong solvents such as alcohol, benzine, or thinner, as these might damage the surface of the speaker.

Important Information Relating to Network Services

All information, data, documents, communications, downloads, files, text, images, photographs, graphics, videos, webcasts, publications, tools, resources, software, code, programs, applets, widgets, applications, products and other content ("Content") and all services and offerings ("Services") provided or made available by or through any third party (each a "Service Provider") is the sole responsibility of the Service Provider from whom it originated.

The availability of and access to Content and Services furnished by the Service Provider through the LGE Device are subject to change at any time, without prior notice, including, but not limited to the suspension, removal or cessation of all or any part of the Content or Services.

Should you have any inquiry or problem related to the Content or Services, you may refer to the Service Provider's website for the most up-to-date information. LGE is neither responsible nor liable for customer service related to the Content and Services. Any question or request for service relating to the Content or Services should be made directly to the respective Content and Service Providers.

Please note that LGE is not responsible for any Content or Services provided by the Service Provider or any changes to, removal of, or cessation of such Content or Services and does not warrant or guaranty the availability of or access to such Content or Services.

TERMS OF USE

These Terms of Use apply to those individuals and groups who use LG's Multiroom Speaker (LG Mutiroom Speaker), any software(s) associated with LG Multiroom Speaker, this application and any services associated this application (collectively "LG Software"). They set out LGE's responsibilities to you as well as identifying the "dos" and "don'ts" that you should be aware of when you use the LG Software. LG Software is proprietary software owned by LG Electronics Inc., a corporation registered in Korea with its registered office at Yeouido-dong 20, Yeoungdeungpo-gu, Seoul, Korea. LGE, and its licensors ("LGE", "us" or "we").

By accessing or using LG Software, you confirm that you accept these Terms of Use and that you agree to comply with them. If you do not agree to these Terms of Use, you may not access or use the LG Software. To the extent that any conflict arises between these Terms of Use and any other document referred to in these Terms of Use, these Terms of Use will take precedence, unless clearly stated otherwise in the relevant document.

We grant you a non-exclusive license to use the pre-installed copy of LG Software solely to the extent necessary for you to use your LG Multiroom Speaker personally and for no other purpose.

You acknowledge that all ownership rights in LG Software anywhere in the world belong exclusively to us and that no ownership rights in LG Software are transferred to you. You are only entitled to the limited use of LG Software as is granted in these license terms.

You may not copy, modify, decompile or reverse engineer our software in any way unless you are allowed to do so by law. We reserve the right to suspend, withdraw or discontinue all or part of the Services without notice if we consider that you are in breach of these Terms of Use.

You acknowledge that LG Software has not been developed to meet your individual requirements. We make no promises or guarantees that LG Software is free from bugs or errors or that it will always be available. We use commercially reasonable efforts to provide LG Software on a continuous, high quality basis but cannot guarantee that they will always be available, uninterrupted or error free. It is possible that we may have to interrupt or discontinue the LG Software or suspend or restrict your use of all

or any part of the Services where we consider it reasonably necessary for technical, operational, security, legal or regulatory reasons.

We do not accept any responsibility if for any reason the Services or any part of them are unavailable at any time or for any period.

Although you may use LG Software to download and access content or applications made available by third parties on your LG Software, we make no promises or guarantees that you will always be able to access such content or applications. So far as we are legally able to do so, we exclude any warranties, conditions or other terms which may be implied into these license terms by law.

So far as we are legally able to do so, we exclude any liability for any loss or damage incurred by you or any other person in connection with your use of LG Software. We are only responsible for loss or damage suffered that is a foreseeable result of our breach of these license terms or our negligence up to the amount specified below, but we are not responsible for any loss or damage that is not foreseeable. Loss or damage is foreseeable if it is an obvious consequence of our breach or if it was contemplated by you and us when you starting using LG Software.

For any loss or damage that is not excluded under these license terms, whether in contract, tort (including negligence) or otherwise, the total liability of us and our group of companies to you is limited to the amount that you paid for your LG Software service. To the extent permissible under the applicable laws, some jurisdictions do not allow the limitation or exclusion of liability for incidental or consequential damages, or have legislation that restricts the limitation or exclusion of liability, so the above limitation may not apply to you.

Nothing in these license terms shall limit or exclude our liability for death or personal injury relating from our negligence, fraud or fraudulent misrepresentation or any other liability that cannot be excluded or limited by law.

LG Software provides access to "apps" and link to other services owned and operated by third parties, such as content providers. Any third party apps, services and content that you access via the Services are made available to you by these third party providers and are outside the scope of these Terms of Use.

Your dealings with any third party providers are solely between you and the relevant provider and

may be subject to the provider's own terms and conditions and privacy policy. We encourage you to read these documents, although we are not responsible for their content. We do not accept any responsibility for apps, services or content provided by third party providers.

We may impose limits on the use of or access to certain third party content, application or services, in any case without notice or liability. We expressly disclaims any responsibility or liability for any change, interruption, disabling, removal of or suspension of any content, application or service made available through this LG Software. We are neither responsible nor liable for customer service related to the content, application and services. Any question or request for service relating to third party's content, application or services should be made directly to the respective content and service providers or application developers, as appropriate. These terms do not affect your statutory rights as a consumer.

Suitability of the Services for children and parental control tools

Modify this accordingly to suit if appropriate: The Services are not directed at children under the age of 13 and are not structured specifically to attract children under 13. Further, certain content that you may access through your use of the Services may contain material that you consider indecent, objectionable or which may not be suitable for children.

If you permit a child to use your LG Smart TV to access the Services, you are solely responsible for deciding whether or not the relevant Services are appropriate for access by that child.

[Your Smart TV offers a parental control tool (by way of a 4 digit PIN). If you have enabled the 4-digit PIN, your LG Smart TV will not be able to display restricted content unless you type in the PIN. You are responsible for setting up and maintaining the parental control tool and any other controls that are available, and we will not be responsible for any harm, loss or damage you suffer or any other user of your LG Smart TV suffers as a result of your failure to do so. Depending on the models of your LG Smart TV, these features may not be available.

Viruses and Security

Modify this accordingly to suit if appropriate: We use commercially reasonable efforts to ensure that the Services are secure and virus free, but those efforts cannot and do not guarantee that the

Services will be free from bugs, viruses, or other vulnerabilities.

Further, we do not accept responsibility for any loss or damage caused by a virus, distributed denial-of-service attack, or other technologically harmful material that may infect your LG Smart TV, data or other material belonging to you, during your use of the Services.

Modify as you think appropriate: Complaints

If you have any queries, concerns or complaints about the Services, please contact [include reference to non-personal LG email address].

Modify as you think appropriate: Miscellaneous

Unless expressly stated otherwise, these Terms of Use and the documents referred to in them contain the entire agreement between us and you relating to your use of the Services and supersede any previous agreements, arrangements, undertakings or proposals, written or oral, between us and you relating to your use of the Services.

We may assign, sub-contract or otherwise transfer any or all of our rights and obligations under these Terms of Use to any company, firm or person. We can only do this if it does not materially affect your rights under these Terms of Use. You may not assign, sub-contract or otherwise transfer your rights or obligations under these Terms to anyone else (except where you dispose of your LG Smart TV to a third party) unless you first agree this with us in writing.

If we decide not to exercise or enforce any right that we have against you at a particular time, then this does not prevent us from later deciding to exercise or enforce that right.

If any part of these Terms of Use is found to be illegal, invalid or otherwise unenforceable by a court or regulator, then, where required, that part shall be deleted and the remaining parts of the Terms of Use will continue to be enforceable.

These Terms of Use do not create or infer any rights that are enforceable by any person who is not party to them.

These Terms of Use are governed by the laws of the country where your LG Smart TV is sold and both you and LGE agree to submit to the exclusive jurisdiction of the courts of the country where your LG Smart TV is sold in connection with the same

This Agreement shall be governed by the laws of the Republic of Korea, excluding their conflicts of laws provisions.

If you have any questions or comments about these Terms of Use please contact www.lge.com.

These Terms of Use may be updated by LGE from time to time. If we make a material change to our Terms of Use, we will update you via your LG Software or other means.

Open source software notice

To obtain the source code under GPL, LGPL, MPL and other open source licenses, that is contained in this product, please visit <http://opensource.lge.com>.

In addition to the source code, all referred license terms, warranty disclaimers and copyright notices are available for download.

LG Electronics will also provide open source code to you on CD-ROM for a charge covering the cost of performing such distribution (such as the cost of media, shipping and handling) upon email request to opensource@lge.com. This offer is valid for three (3) years from the date on which you purchased the product.

Gracenote® End User License Agreement

This application or device contains software from Gracenote, Inc. of Emeryville, California ("Gracenote"). The software from Gracenote (the "Gracenote Software") enables this application to perform disc and/or file identification and obtain music-related information, including name, artist, track, and title information ("Gracenote Data") from online servers or embedded databases (collectively, "Gracenote Servers") and to perform other functions. You may use Gracenote Data only by means of the intended End-User functions of this application or device.

You agree that you will use Gracenote Data, the Gracenote Software, and Gracenote Servers for your own personal non-commercial use only. You agree not to assign, copy, transfer or transmit the Gracenote Software or any Gracenote Data to any third party. YOU AGREE NOT TO USE OR EXPLOIT GRACENOTE DATA, THE GRACENOTE SOFTWARE, OR GRACENOTE SERVERS, EXCEPT AS EXPRESSLY PERMITTED HEREIN.

You agree that your non-exclusive license to use the Gracenote Data, the Gracenote Software, and Gracenote Servers will terminate if you violate these restrictions. If your license terminates, you agree to cease any and all use of the Gracenote Data, the Gracenote Software, and Gracenote Servers. Gracenote reserves all rights in Gracenote Data, the Gracenote Software, and the Gracenote Servers, including all ownership rights. Under no circumstances will Gracenote become liable for any payment to you for any information that you provide. You agree that Gracenote, Inc. may enforce its rights under this Agreement against you directly in its own name.

The Gracenote service uses a unique identifier to track queries for statistical purposes. The purpose of a randomly assigned numeric identifier is to allow the Gracenote service to count queries without knowing anything about who you are. For more information, see the web page for the Gracenote Privacy Policy for the Gracenote service.

The Gracenote Software and each item of Gracenote Data are licensed to you "AS IS." Gracenote makes no representations or warranties, express or implied, regarding the accuracy of any Gracenote Data from in the Gracenote Servers. Gracenote reserves the right to delete data from the Gracenote Servers or to change data categories for any cause that Gracenote deems sufficient. No warranty is made that the Gracenote Software or

Gracernote Servers are error-free or that functioning of Gracernote Software or Gracernote Servers will be uninterrupted. Gracernote is not obligated to provide you with new enhanced or additional data types or categories that Gracernote may provide in the future and is free to discontinue its services at any time.

GRACENOTE DISCLAIMS ALL WARRANTIES EXPRESS OR IMPLIED, INCLUDING, BUT NOT LIMITED TO, IMPLIED WARRANTIES OF MERCHANTABILITY, FITNESS FOR A PARTICULAR PURPOSE, TITLE, AND NON-INFRINGEMENT. GRACENOTE DOES NOT WARRANT THE RESULTS THAT WILL BE OBTAINED BY YOUR USE OF THE GRACENOTE SOFTWARE OR ANY GRACENOTE SERVER. IN NO CASE WILL GRACENOTE BE LIABLE FOR ANY CONSEQUENTIAL OR INCIDENTAL DAMAGES OR FOR ANY LOST PROFITS OR LOST REVENUES.

copyright © 2000 to present Gracernote

