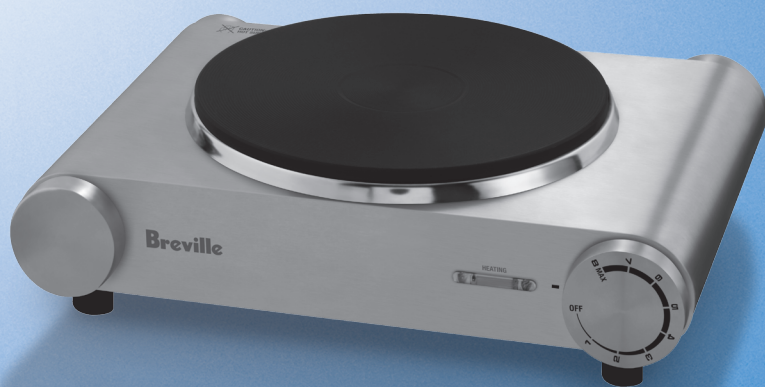


Breville



BHP150 • BHP250 Hot Plates

Contents

	Page
Breville Recommends Safety First	4
Know Your Breville Single/Double Hot Plate	6
Operating Your Breville Single/Double Hot Plate	7
Care, Cleaning and Storage	8

Congratulations

on the purchase of your new Breville Single/Double Hot Plate



Breville recommends safety first

We at Breville are very safety conscious. We design and manufacture consumer products with the safety of you, our valued customer foremost in mind. In addition we ask that you exercise a degree of care when using any electrical appliance and adhere to the following precautions.

IMPORTANT SAFEGUARDS FOR YOUR BREVILLE SINGLE/DOUBLE HOT PLATE

- Carefully read all instructions before operating the appliance and save for future reference.
- Remove and safely discard any packaging material and promotional labels before using the appliance for the first time.
- To eliminate a choking hazard for young children, remove and safely discard the protective cover fitted to the power plug of this appliance.
- The Hotplate operates at very high temperatures. Extreme caution should be exercised during operation. Do not touch hot surfaces.
- The temperature of accessible surfaces will be high when the appliance is operating and for some time of use.
- The appliance is not intended to be operated by means of an external timer or separate remote control system.
- Do not use under curtains or near flammable items. Keep clear of walls for good circulation and to prevent heat damage.
- Always use the appliance on a dry, level, heat resistant surface.
- Do not let the power cord hang over the edge of a table or counter, or touch hot surfaces or become knotted.
- Do not place this appliance on or near a hot gas or electric stove, or where it could touch a heated appliance.
- Do not place metallic objects such as knives, forks, spoons and lids on the hotplate surface as they can become very hot.
- Do not operate the appliance without a cooking pot or pan positioned on the hotplate heating surface.
- Always turn off at the power outlet and then remove plug before attempting to move the appliance or when not in use or when storing or cleaning.
- Keep the appliance clean. Follow the cleaning instructions provided in this book.

IMPORTANT SAFEGUARDS FOR ALL ELECTRICAL APPLIANCES

- Unwind the power cord fully before use.
- Do not let the cord hang over the edge of a bench or table, touch hot surfaces or become knotted.
- To protect against electric shock do not immerse cord, plug or any part of the appliance in water or any other liquid.
- The appliance is not intended for use by persons (including children) with reduced physical, sensory or mental capabilities, or lack of experience and knowledge, unless they have been given supervision or instruction concerning use of the appliance by a person responsible for their safety.
- Children should be supervised to ensure that they do not play with the appliance.
- This appliance is for household use only. Do not use this appliance for anything other than its intended use. Do not use in moving vehicles or boats. Do not use outdoors. Misuse may cause injury.
- It is recommended to regularly inspect the appliance. Do not use the appliance if power cord, power plug or appliance becomes damaged in any way. Return the entire appliance to the nearest authorised Breville Service Centre for examination and/or repair.
- Any maintenance other than cleaning should be performed at an authorised Breville Service Centre.
- The installation of a residual current device (safety switch) is recommended to provide additional safety protection when using electrical appliances. It is advisable that a safety switch with a rated residual operating current not exceeding 30mA be installed in the electrical circuit supplying the appliance.
- See your electrician for professional advice.



ALWAYS KEEP IN MIND THAT THE HOTPLATES, AFTER BEING SWITCHED OFF WILL CONTINUE TO RADIATE RESIDUAL HEAT.



DO NOT USE THESE HOTPLATES WITHIN REACH OF YOUNG CHILDREN.

Know Your Breville Hot Plate

BHP150 SINGLE HOT PLATE



- 8. Durable stainless steel surface – for easy cleaning
- 9. Variable temperature control with 8 heat settings
- 10. Heating indicator

- 11. 19 cm die cast hotplate
- 12. Non-slip feet
- 13. Cord Wrap (not shown)

BHP250 DOUBLE HOT PLATE



- 1. Durable stainless steel surface – for easy cleaning
- 2. Two variable temperature control with 8 heat settings
- 3. Heating indicator
- 4. 16 cm die cast hotplate

- 5. 19 cm die cast hotplate
- 6. Non-slip feet
- 7. Cord Wrap (not shown)

Operating Your Breville Hot Plate

Remove and safely discard any packaging material and promotional labels before using the appliance for the first time.

Wipe the hotplates with a soft damp cloth and dry thoroughly.

1. Place hotplate on a dry, level heat resistant surface.
2. Completely unwind power cord and insert power cord into a 230/240V power outlet. Switch on at the power point.
3. Place a saucepan or cooking pot, in which the food will be cooked, on the hotplate.
4. To switch the hotplate on, turn the temperature control dial from the OFF position to the desired temperature setting (from 1-8) using the temperature control dial. The temperature settings are adjustable and can be changed at any time during the cooking.

NOTE

The “heating” indicator light will illuminate when the hotplate is preheating and cooking. The heating light may cycle on and off during operation. This cycling is normal and indicates that the correct temperature is being maintained.

NOTE

When turned on for the first time, the Breville Hotplate may give off vapours for up to 15 minutes. This is due to the protective substances on the heating elements. There is no need for concern and the vapours will dissipate with use.

NOTE

To achieve optimum performance, ensure the diameter of the cooking pot or pan is no larger than the diameter of the hotplate.

5. To switch the hotplate off, turn the temperature control dial to the OFF position and turn the power off at the power outlet and unplug power cord.



DO NOT OPERATE THE APPLIANCE WITHOUT A COOKING POT OR PAN POSITIONED ON THE HOTPLATE HEATING SURFACE.



FULLY UNWIND POWER CORD BEFORE USE. DO NOT ALLOW POWER CORD TO COME IN CONTACT WITH HOT PLATE. DO NOT MOVE HOT PLATE UNTIL IT IS COMPLETELY COOLED DOWN.



ALWAYS KEEP IN MIND THAT THE HOTPLATES WILL CONTINUE TO RADIATE RESIDUAL HEAT AFTER BEING SWITCHED OFF.



NO MORE THAN 5 LITRES OF WATER CAN BE BOILED AT ANY TIME. FOR MORE EFFICIENT PERFORMANCE IT IS RECOMMENDED TO USE A LID WHEN BOILING WATER.

Care, Cleaning and Storage

Before cleaning, turn the temperature control dial to the OFF position, turn off at the power outlet and then unplug. Ensure hotplate has completely cooled down before cleaning.

Cleaning

To clean the hotplate surface, wipe with a damp soft cloth. A multi purpose spray cleaner may be used.

Do not use abrasives or harsh cleaning solutions to clean the hotplate surface.

To minimize staining or rusting marks on the hotplate surface, do not leave any food spillage and/or liquids on the hotplate surface for a long period of time.

If necessary, the exterior of the unit may be wiped with a slightly damp cloth using a mild detergent.

A stainless steel powder cleaner can be used on stubborn stains on the stainless steel surface only. Alternatively, a paste of bicarbonate of soda and water can be rubbed into the stained area and thoroughly washed off.

Do not use abrasives, harsh cleaning solutions or metal scourer pads as continued use will scratch the stainless steel surface and make subsequent cleaning more difficult.

Storage

Before storage, turn the temperature control dial to the OFF position, turn off at the power outlet and then unplug.

Ensure the appliance is completely cooled, clean and dry. Store the appliance upright on the bench or in a convenient cupboard.

Do not place anything on top of the appliance during storage.



DO NOT IMMERSE THE HOTPLATE OR POWER CORD AND PLUG IN WATER OR ANY OTHER LIQUID.

Notes

Notes

| 10

Notes

Breville

Breville Customer Service Centre

Australian Customers



Breville Customer Service Centre
PO Box 22
Botany NSW 2019
AUSTRALIA



Customer Service: 1300 139 798
Fax (02) 9384 9601
Email Customer Service:
askus@breville.com.au

New Zealand Customers



Breville Customer Service Centre
Private Bag 94411
Greenmount
Auckland, New Zealand



Customer Service: 0800 273 845
Fax 0800 288 513
Email Customer Service:
askus@breville.com.au

www.breville.com.au

Breville is a registered trademark of Breville Pty Ltd

ABN 98 000 092 928

© Copyright Breville Pty Ltd 2008

Due to continual improvements in design or otherwise,
the product you purchase may differ slightly from the one illustrated in this booklet.

Model BHP150/250 Issue 1/09



**PRINTED ON
RECYCLED PAPER**



**AUSTRALIAN
OWNED**