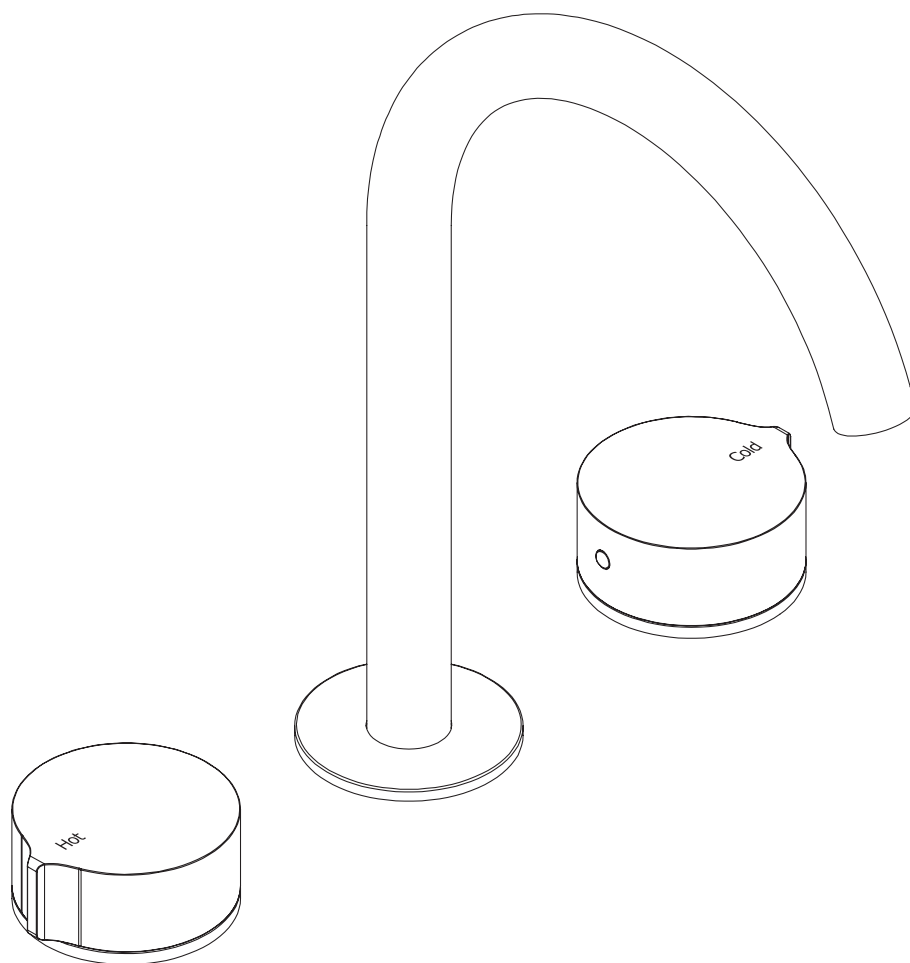


# Eccentric by Rogerseller

Basin Set

Installation  
Instructions

# Specification



## Eccentric by Rogerseller Basin Set

3606013101 — Chrome

❶ Other finishes available

## Recommended Tools



Shifting Spanner



Pipe Cutter



Ruler

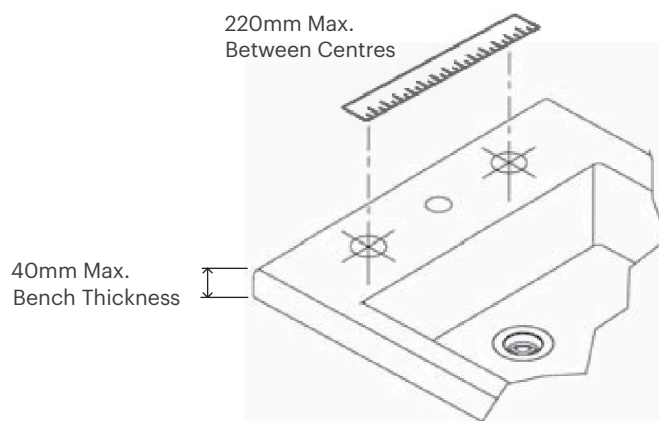
## Notes Before Installation

- Replace, clean and flush supply as necessary.
- Shut off mains water supply.
- Inspect supply lines for any signs of damage or foreign material.
- Check all reference dimensions to ensure tap set suitable for application.
- Check the product and it's packaging are un-damaged.
- If product is found to be defective or parts are missing please contact point of sale.

# Installation

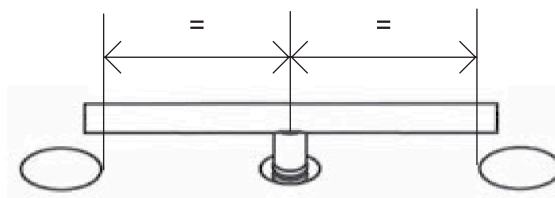
## Step 1

Measure centre distance of basin / bench and confirm maximum distance between tap holes is 220mm.



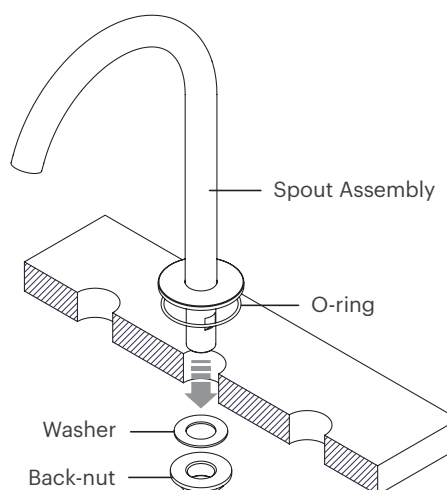
## Step 2

Trim the tee-piece using a pipe cutter to suit the centre distance of the basin tap holes. As a guide, place the tee-piece in the centre of the spout hole and mark on it the inner edge of the tap holes. Trim at this point and remove sharp edges..



## Step 3

Ensure the O-ring is located between the spout flange and basin to seal out any water. Place the spout assembly into appropriate basin hole and secure it in place using the supplied washer and back-nut.

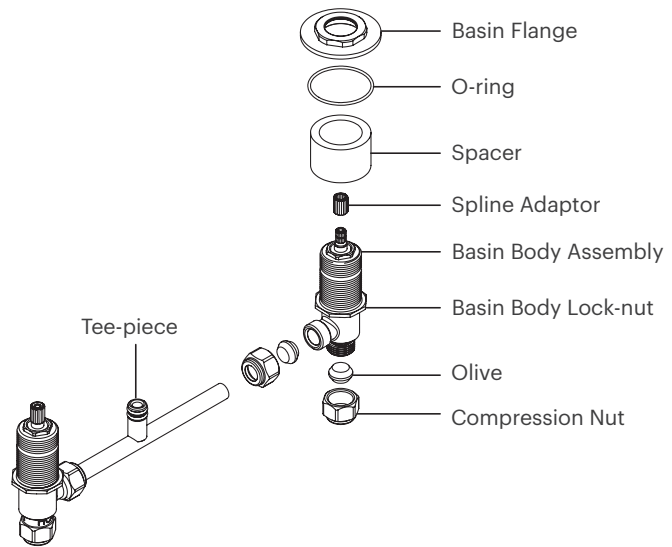


# Installation

## Step 4

Screw one basin body lock-nut onto each of the basin body assemblies all the way. Then place the compression nuts and olives onto the tee-piece, then fit the basin body assemblies to each end of the tee-piece. (Only hand tight at this stage of installation).

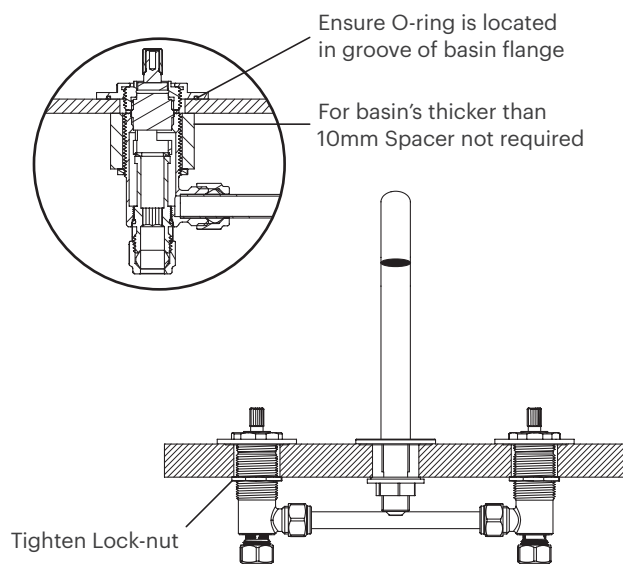
Note: Place the assembly upside down into the appointed holes to check/obtain correct centre distances.



## Step 5

From the underside, place the basin assembly into appropriate holes so as the tee-piece engages the spout. Screw the basin flange with O-ring onto the basin body assembly as far as it will go. Secure the basin assembly in place by tightening the basin body lock-nuts.

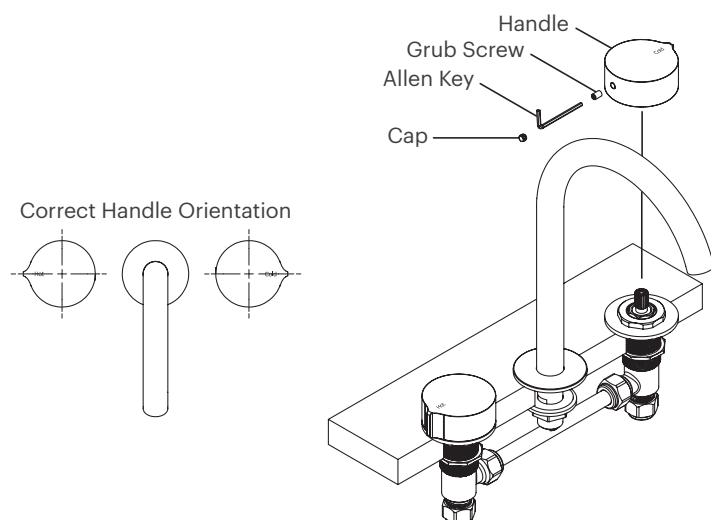
Note: Spacer requirement is dependant on bench thickness. Ensure O-ring located in each basin flange before securing in place.



## Step 6

With the ceramic valves in the off position, orientate each handle assembly as shown in the diagram.

Place handle on and engage the spline adaptor. Using the allen key supplied tighten the grub screw to fix the handle in place. Gently push the Cap into hole until flush with the outside.

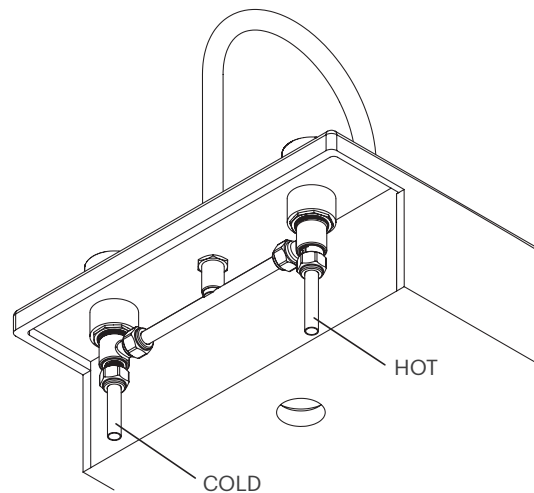


# Installation

## Step 7

Connect supply lines using your preferred method in accordance with AS/NZS3500, connect the mains water supply lines to the appropriate hot and cold basin body. (hot marked with red tape).

Introduce mains supply, check for leaks and remedy if required.



## Specifications

It is a requirement of state plumbing codes that licensed plumbers carry out all tapware installations. All installations must comply with the relevant requirements of AS/NZS3500 and local plumbing codes.

## Pressure

Maximum Hydrostatic Pressure - 1000kpa

Recommended Maximum Hydrostatic Pressure - 500 kpa. (AS/NZS 3500)

Recommended Minimum Hydrostatic Pressure - 150 kpa.

Maximum Hydrostatic Pressure may be exceeded under test conditions only in accordance with AS/NZS 3500. Where hydrostatic pressure exceeds the maximum stated above, pressure limiting valves must be installed or warranty will be void.

## Temperature

Maximum Water Temperature - 80°C

For optimum performance, Hot and Cold inlet water pressure should be equal.

## Sink Requirements

Tap Hole Size - Ø32 - 35mm

Spout Hole Size - Ø26 - 32mm

Maximum Bench Thickness - 40mm

## Care and Maintenance

[1] Product should be inspected for surface damage prior to installation. [2] Cleaning and handling of all finishes must be performed carefully. [3] Clean products using a soft cloth with warm soapy water only. [4] Never use harsh detergents or abrasive cleaners as these will damage the product. [5] Water marks can be removed from Matt Finishes with an application of a carnauba wax based non-abrasive polish on a microfibre cloth. [6] Do not use undue pressure when cleaning and wipe in one direction only. [7] Contact with harsh chemicals such as hair dye, hair bleach etc will result in damage to the finish. [8] Tapware should never be installed using acetone silicones. [9] Avoid the use of wax based furniture creams as this can result in a build up of deposits which will detract from the appearance. [10] Damage to finishes arising from improper installation or post installation use or failure to observe the above care and cleaning instructions will void all warranty agreements.

## Warranty

Rogerseller tapware, bathroom fittings and sanitaryware are covered by a five (5) year warranty from date of purchase. For full terms and conditions please refer to [rogerseller.com.au](http://rogerseller.com.au)

Dimensions are approximate. Information in this installation instruction is representative of the product available at the time of printing. Due to our policy of continuous product development, the design and specifications depicted are subject to change without notice. Please confirm all particulars with your client advisor prior to purchase.

**rogerseller**

**RAM**  
TAPWARE

[rogerseller.com.au](http://rogerseller.com.au)