

Emilia Electronic Dishwasher

EDW61SS



Value, Features and Reliability... a dishwasher for everyday needs

Finished in beautiful stainless steel, the Emilia EDW61SS is specified with features normally found only on much more expensive dishwashers.

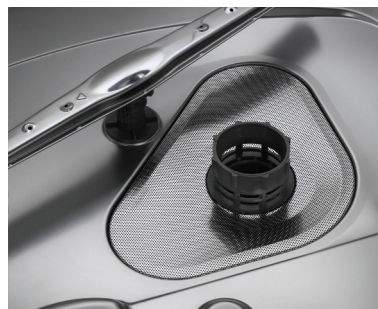
Peace of mind – for us this is a must.

Can you imagine what your kitchen would look like if the water inlet hose to your dishwasher ruptured?

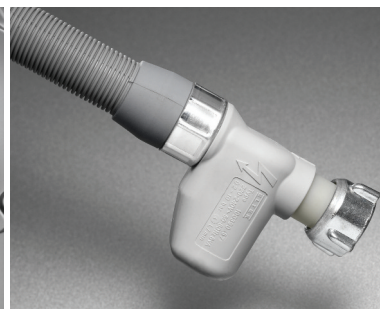
Especially if you weren't at home? On the EDW61SS we have installed an ANTIFLOOD valve on the water inlet.

If the hose ruptures the water is immediately shut off. Make this feature a must on your dishwasher choice.

 **EMILIA**



Micro filter



Antiflood safety valve



Electronic control

**Value, Features
and Reliability
a dishwasher for
everyday needs**

Energy and Water

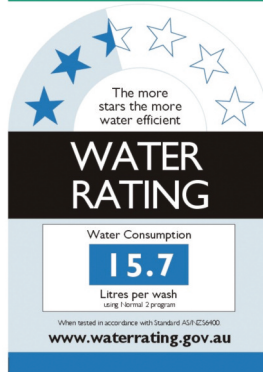
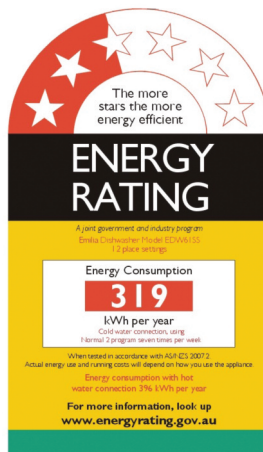
- 2.5 star energy rating
- 2.5 star water rating
- Energy consumption of 319 kWh per year, based on cold water connection using the Normal 2 program 7 days per week.
- Water consumption of 15.7 litres per wash using the normal program

Flexibility

A choice of 3 programs – Normal, Rapid and Soak using a combination of 4 wash temperatures – 40, 45, 50, 60 matched with a 12 place-setting capacity.

Adjustable upper rack that allows for different dish sizes

Under floor drying element that prevents damage to items that might fall during the wash cycle.



Features

- 60 cm Free Standing Dishwasher
- Electronic controls
- 12 Place settings
- AAA rated
- Stainless steel door
- Stainless steel interior
- 3 wash programs
- N° of temperatures - 40°, 45°, 50°, 65°
- Rinse Aid indicator
- Hot or cold water connection
- ANTIFLOOD solenoid safety valve
- Anti leak device
- Anti flood device
- Audible signal at the end of the cycle
- Concealed heating element
- Stainless steel microfilter
- Self cleaning microfilter
- Height adjustable upper basket
- Collapsible plate-racks
- Removable top
- Adjustable feet



The descriptions and images in this brochure apply to the specific products at the date of publication. Glem Gas has a policy of continuous product development and product specifications may change without notice. Please check with the retailer that this brochure correctly describes the products that are being offered for sale. Glem Gas should not be held responsible for any errors in this brochure caused by inaccuracy in printing or transcription.

Warranty

Glem products are covered by a two year warranty, on parts and labour and conditional to our Warranty policy.

Service

Glem Gas has an Australia wide service network available. Call 02 9721 2755 for assistance.

Glem Gas Australasia Pty Ltd

Unit 26, 10 Straits Avenue,
South Granville, NSW 2142

PO BOX 63 Blaxcell PO,
South Granville, NSW 2142

Telephone: (02) 9721 2755

Facsimile: (02) 9721 2766

info@glemgas.com.au

www.emiliaglem.com.au

Local charge 1 300 307 917