



220-240V

1680-2000W



WHEF02R

WHEF02

SPECIFICATIONS AND FEATURES

- Square electric frypan with small footprint
- Tempered glass lid
- Extra-deep, thick cast aluminium body
- Cast-in heating element
- Trigger release temperature control probe
- Cool-touch knobs and handles
- Non-stick coated pan with stone finish
- Dishwasher safe (excl. temperature probe)

30cm (W) x 30cm (D) x 8cm (H)



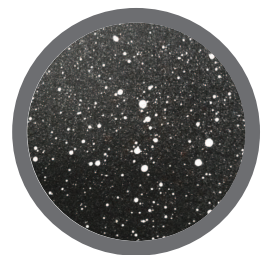
TRIGGER RELEASE
TEMPERATURE
CONTROL PROBE



CAST-IN
HEATING ELEMENT



WHEF02K



EXTRA DEEP NON-STICK
COATED PAN WITH
STONE FINISH