

Vacuum Cleaner

user manual

- * Before operating this unit, please read the instructions carefully.
- * For indoor use only.

English

imagine the possibilities

Thank you for purchasing a Samsung product.
To receive a more complete service,
please register your product at
www.samsung.com/register

SAMSUNG

safety information

SAFETY INFORMATION



- Before operating the appliance, please read this manual thoroughly and retain it for your reference.



- Because these following operating instructions cover various models, the characteristics of your vacuum cleaner may differ slightly from those described in this manual.

CAUTION/WARNING SYMBOLS USED

	Indicates that a danger of death or serious injury exists.
	Indicates that a risk of personal injury or material damage exists.

OTHER SYMBOLS USED

	Represents something you must NOT do.
	Represents something you must follow.
	Indicates that you must disconnect the power plug from the socket.

safety information

IMPORTANT SAFEGUARDS

1. Read all instructions carefully. Before switching on, make sure that the voltage of your electricity supply is the same as that indicated on the rating plate on the bottom of the cleaner.
2. **WARNING** : Do not use the vacuum cleaner when rug or floor is wet.
Do not use to suck up water.
3. Close supervision is necessary when any appliance is used by or near children. Do not allow the vacuum cleaner to be used as a toy. Do not allow the vacuum cleaner to run unattended at any time. Use the vacuum cleaner only for its intended use as described in these instructions.
4. Do not use the vacuum cleaner without a dust bin. Empty the dust bin before it is full in order to maintain the best efficiency.
5. Do not use the vacuum cleaner to pick up matches, live ashes or cigarette butts. Keep the vacuum cleaner away from stoves and other heat sources. Heat can deform and discolour the plastic parts of the unit.
6. Avoid picking up hard, sharp objects with the vacuum cleaner as they may damage the cleaner parts. Do not stand on the hose assembly. Do not put weight on the hose. Do not block the suction or the exhaust port.
7. Switch the vacuum cleaner off on the body of the machine before unplugging from the electrical outlet. Disconnect the plug from the electrical outlet before emptying the dust bin. To avoid damage, please remove the plug by grasping the plug itself, not by pulling on the cord.
8. This appliance is not intended for use by persons (including children) with reduced physical, sensory or mental capabilities, or lack of experience and knowledge, unless they have been given supervision or instruction concerning use of the appliance by a person responsible for their safety.
9. Children should be supervised to ensure that they do not play with the appliance.
10. The plug must be removed from the socket outlet before cleaning or maintaining the appliance.
11. The use of an extension cord is not recommended.
12. If your vacuum cleaner is not operating correctly, switch off the power supply and consult an authorized service agent.
13. If the supply cord is damaged, it must be replaced by the manufacturer or its service agent or a similarly qualified person in order to avoid a hazard.
14. Don't carry the vacuum cleaner by holding the hose.
Use the handle on the vacuum cleaner set.
15. Unplug the cleaner when not in use. Turn off the power switch before unplugging.

contents

ASSEMBLING THE CLEANER 05 Assembling the Cleaner

05

OPERATING THE CLEANER 06 Power cord 06 Power control

06

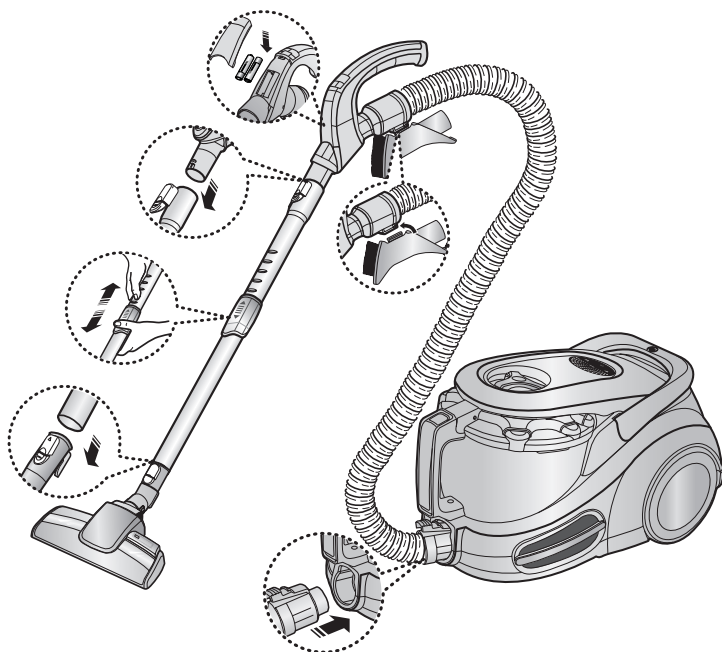
MAINTAIN TOOLS AND FILTER 08 Using accessory 09 Maintain floor tools 11 Emptying the dust bin 12 Cleaning the dust pack 14 Cleaning the motor protection filter 14 Cleaning the outlet filter 15 Change the battery

08

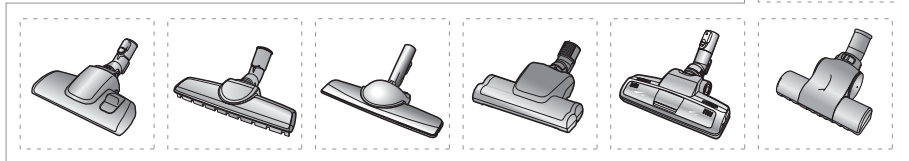
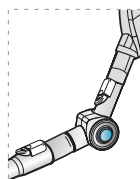
TROUBLESHOOTING

16

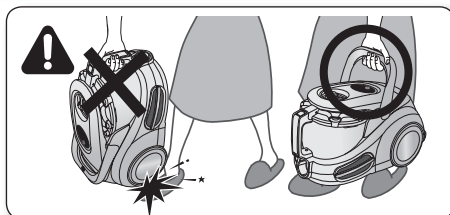
assembling the cleaner



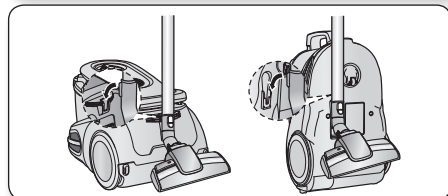
OPTION



- ★ • Please do not press the button of dust bin handle when carrying machine.

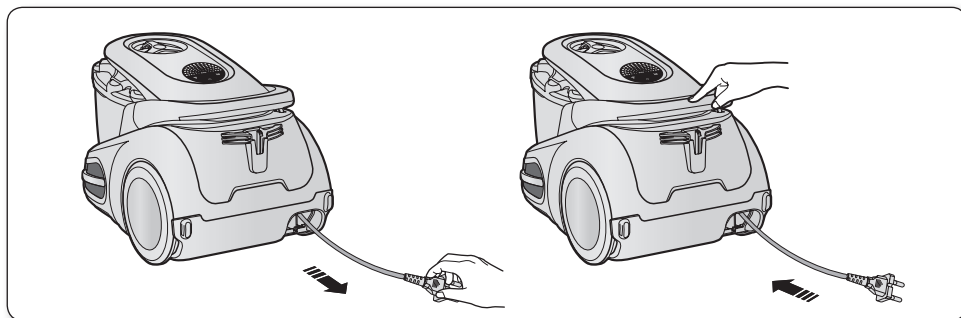


- ★ • For storage, park the floor nozzle.

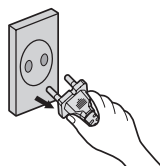


operating the cleaner

POWER CORD



- When removing the plug from the electrical outlet, grasp the plug, not the cord.



POWER CONTROL (INFRARED CONTROL)

- HOSE

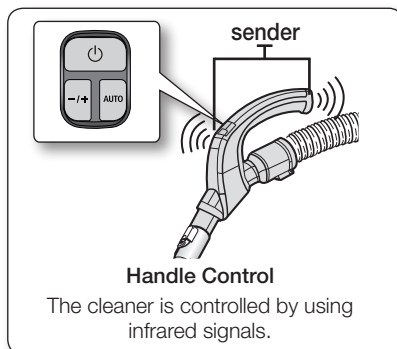
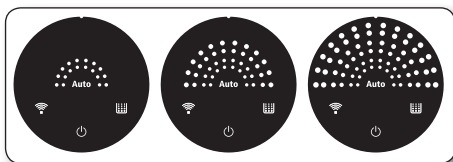
1. Vacuum cleaner ON/OFF()

Press the ON/OFF button to operate the vacuum cleaner. Press again to stop the vacuum cleaner.

2. Vacuum cleaner (-,+)

Press the MODE button repeatedly to select the correct mode.

(ON) MIN → MID → MAX



3. Using Auto mode

Press the Auto button to operate the vacuum cleaner automatically.



Don't cover the handle sender when you use a handle control button.

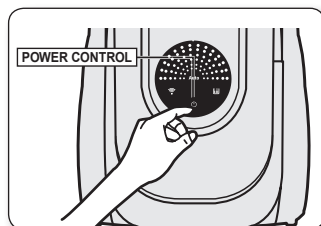
- BODY




Press the power control button repeatedly to select the correct mode.

(ON(MAX) → OFF)



If the remote control is not working, the cleaner can be operated using the control button on the body of the machine.



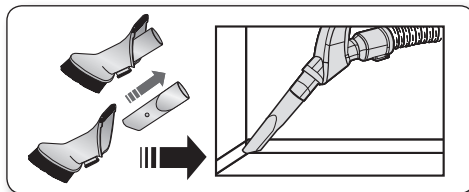
	The IR light indicates the part that receives the infra-red signal from the handle control.
	The filter light is illuminated when the dust pack requires checking or emptying. An audio signal will also sound.
	This indicates that the automatic suction mode is selected. The level of suction is indicated by the LED display.

maintain tools and filter

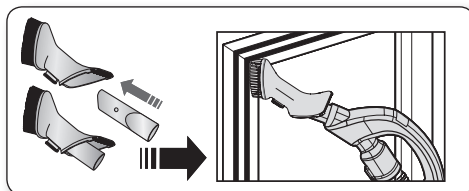
USING ACCESSORY

Accessory

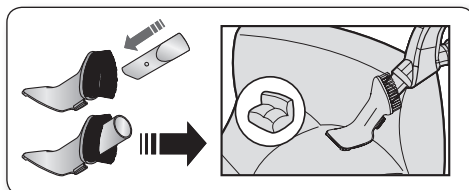
- Push the accessory on to the end of the hose handle.



- To use the dusting tool, push the accessory on to the end of the hose handle.

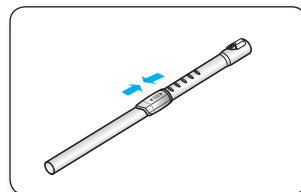


- To use the upholstery tool, push the accessory on to the end of the hose handle.

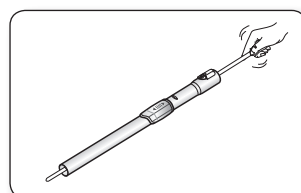


Pipe

- Adjust the length of the telescopic pipe by sliding the length control button located in the center of the telescopic pipe back and forth.



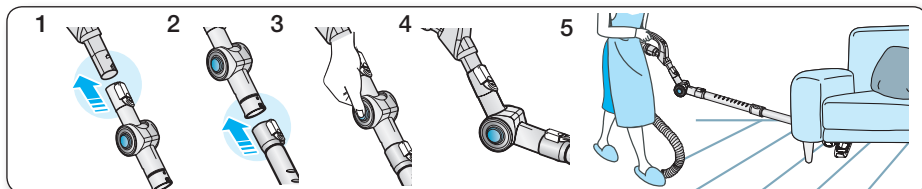
- To check for blockages, separate the telescopic pipe and adjust to shorten. This allows for easier removal of waste clogging the tube.



maintain tools and filter

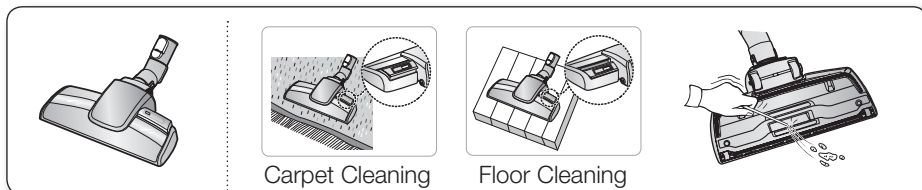
MAINTAIN FLOOR TOOLS

Elbow Extending Tube (Option)



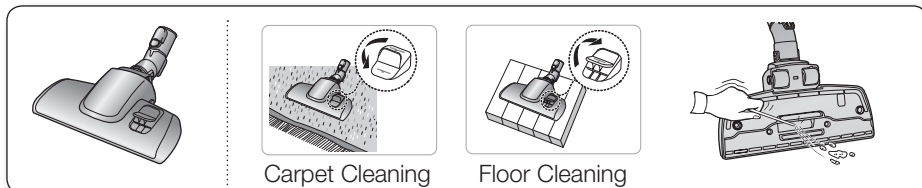
1. Connect the elbow extending tube to connecting part for hose knob and telescopic pipe.
2. Fit the telescopic pipe to the lower part of the elbow extending tube.
3. Press the PUSH button.
4. With the PUSH button pressed, the elbow extending tube is folded.
5. Using the elbow extending tube allows hard to reach areas (e.g. under furniture) to be cleaned without having to kneel down.

3 Way Brush (Option)



- Adjust the inlet lever according to the floor surface.
- Remove waste matter completely if the inlet is blocked.

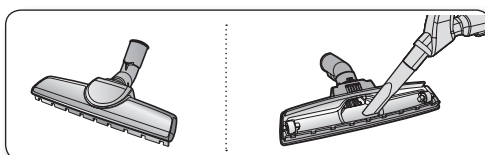
2-Step Brush (Option)



- Adjust the inlet lever according to the floor surface.
- Remove waste matter completely if the inlet is blocked.

Parquet Master Brush (Option)

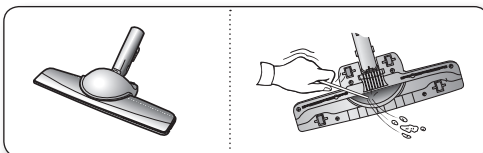
- Vacuum dust in wide area at once.
- Remove waste matter completely if the inlet is blocked.



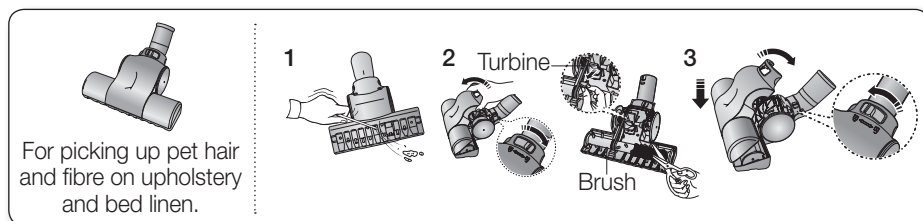
maintain tools and filter

Parquet Brush (Option)

- Vacuum dust in wide area at once.
- Remove waste matter completely if the inlet is blocked.



Blanket Brush(Optional)

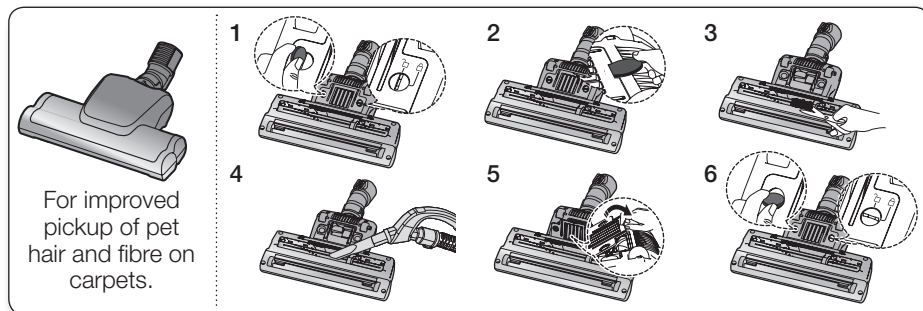


1. Remove waste matter completely when inlet is blocked.
2. Turn the lock button to (🔓), and remove.
3. To reassemble, align the cover to the front of the main body and close. After closing the cover, ensure that the lock button is turned to the (🔒) position.



Use for bedclothes only. Be cautious not to damage brush during unclogging.

Super turbine brush (Option)



Frequent vacuuming of hair or pet fur may cause a falling-off of the rotation due to matters tangled around the drum. In this case, clean the drum with care.

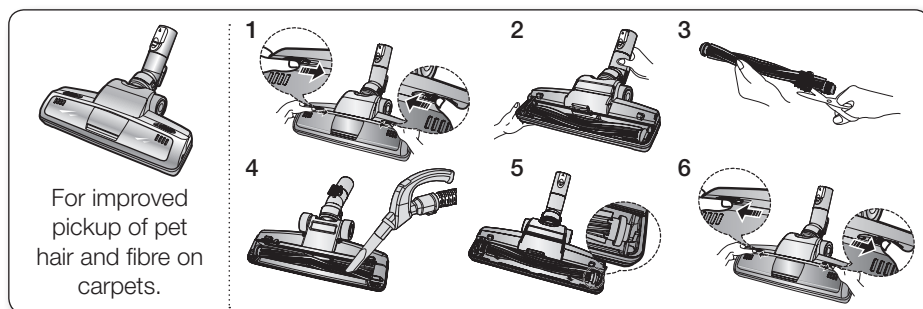
1. Turn the lock button to unlock position use the like coin (🔓).
2. Remove the guide air use the like coin.
3. Remove waste matter such as dust and hair tangled around the brushbar using scissors.
4. Remove dust inside the brush housing using a dry duster or crevice tool.
5. Assemble the guide air.
6. Turn the lock button to lock position use the like coin (🔒).



Please be careful not to damage the brush.

maintain tools and filter

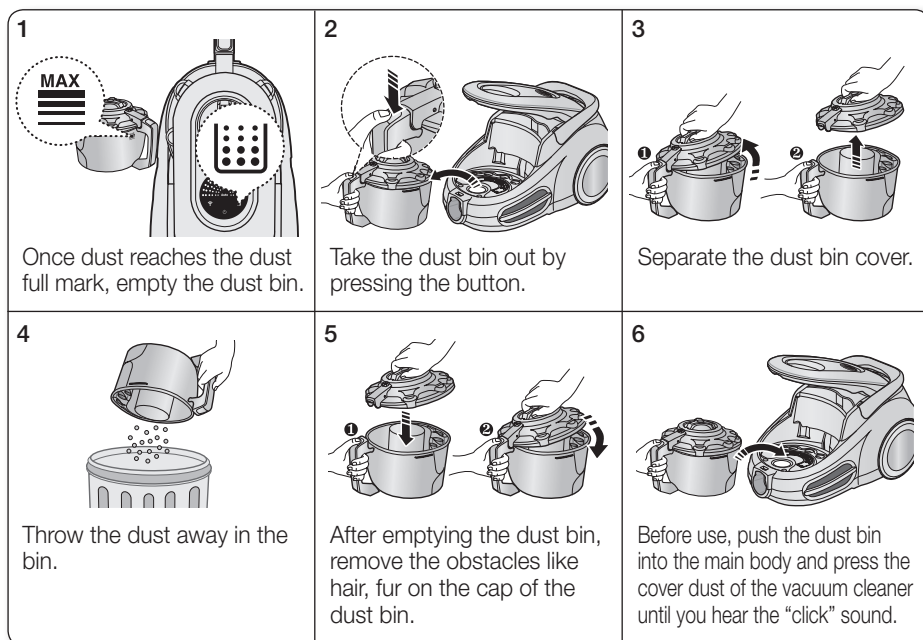
Power Pet Plus Brush (Option)



Frequent vacuuming of hair or pet fur may cause a falling-off of the rotation due to matters tangled around the drum. In this case, clean the drum with care.

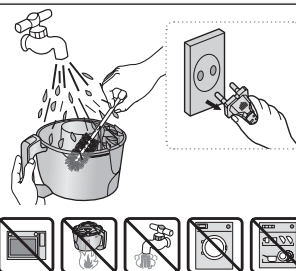
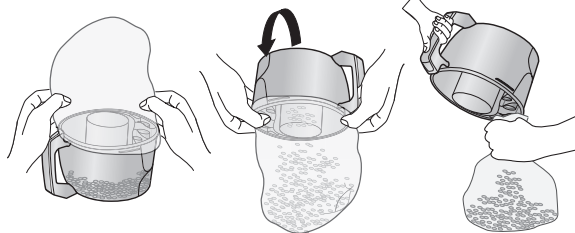
1. Push the Open button of the transparent screen cover to separate the cover.
2. Remove the brushbar from the transparent screen.
3. Remove waste matter such as dust and hair tangled around the brushbar using scissors.
4. Remove dust inside the brush housing using a **dry** duster or crevice tool.
5. Insert brushbar into rotating belt and assemble.
6. Click the transparent screen cover back into place to reassemble.

EMPTYING THE DUST BIN



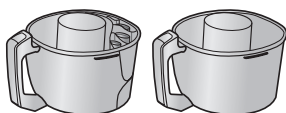
maintain tools and filter

- Empty into a plastic bag.
(recommended for asthma/allergy sufferers)



★ You may rinse the dust bin with cold water.

Option

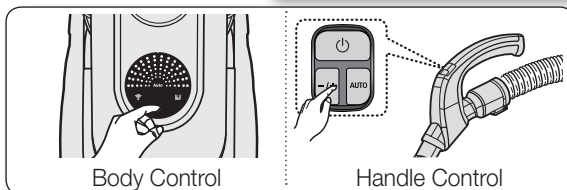
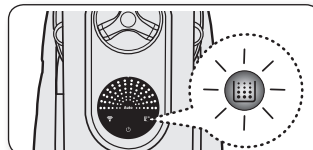


When emptying any vacuum cleaner it is difficult to avoid exposure to dust. To minimize this risk, Please ensure that you encase the dust pot in a large bag to empty it and close the bag as tightly as possible round the pot. Remove the pot and close the bag as tightly and quickly as possible and dispose of this immediately. it is advisable to wear disposable gloves and a face mask while emptying the cleaner. If at all possible, ask a non allergy sufferer to empty the dust pot when required.

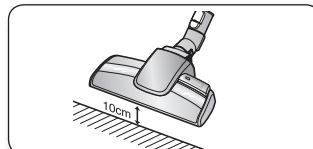
CLEANING THE DUST PACK

WHEN TO CLEAN THE DUST PACK

- The lamp will turn red when suction is reduced. If the light comes on, please clean the dust pack.
- Turn the vacuum power to 'MAX'.

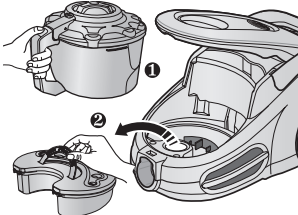
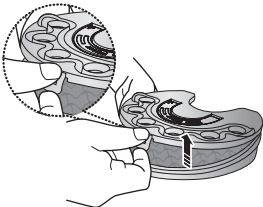
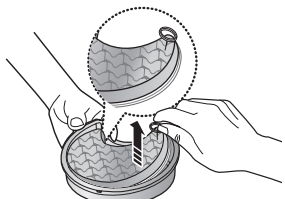
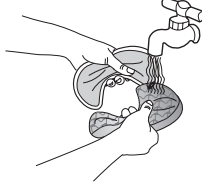
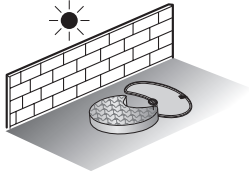
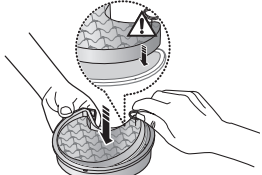
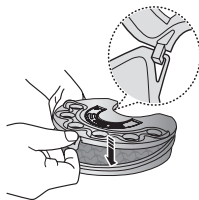
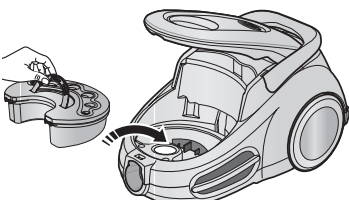




- If the filter check indicator turns red with the inlet floating 10cm above flat floor, clean the dust pack.



- ★ When suction is noticeably reduced continuously, please cleaning the dust pack.

CLEANING THE DUST PACK

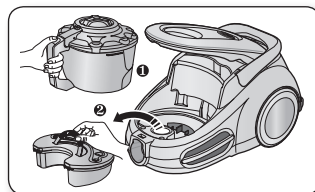
<p>1</p>  <p>Remove the dust bin and dust pack as shown.</p>	<p>2</p>  <p>Remove the fixed frame of the dust pack cover.</p>	<p>3</p>  <p>Remove the sponge and filter from the dust pack.</p>
<p>4</p>  <p>Wash the sponge and the filter of the dust pack with water.</p>	<p>5</p>  <p>Let the sponge and filter dry in the shade for more than 12 hours.</p>	<p>6</p>  <p>Put the sponge and filter into the dust pack.</p>
<p>7</p>  <p>Before reassembly, align the dust pack cover and dust pack correctly.</p>	<p>8</p>  <p>Put the assembled dust pack into the main body.</p> <div data-bbox="893 883 1046 1115"></div>	

-  Make sure the filter is completely dry before putting it back into the vacuum cleaner. Allow 12 hours for it to dry.

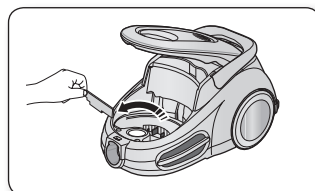
maintain tools and filter

CLEANING THE MOTOR PROTECTION FILTER

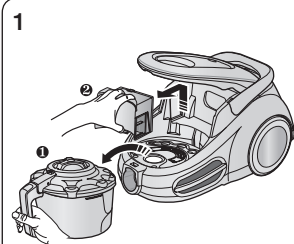
- Take out both the dust bin and the dust pack.



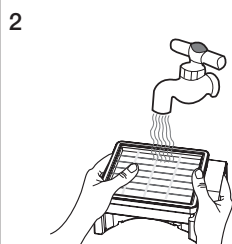
- Remove the motor protection filter from the main body. Shake and tap the dust from it and put back in machine.



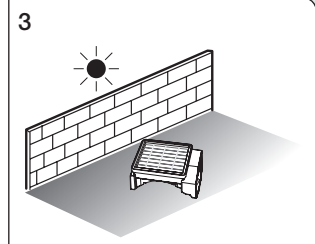
CLEANING THE OUTLET FILTER



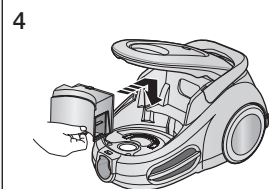
Remove the dust bin and HEPA Filter as shown.



Clean the HEPA Filter.



Let the HEPA Filter dry in the shade for more than 12 hours.



Put assemble HEPA Filter into the main body.



- ★ Make sure the filter is completely dry before putting it back into the vacuum cleaner. Allow 12 hours for it to dry.

CHANGE THE BATTERY

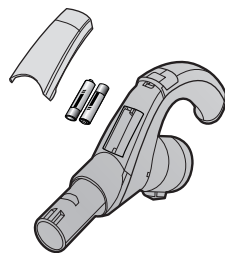


1. When the vacuum cleaner does not work, replace the batteries. If the problem persists, please contact our authorized dealer.
2. Use 2 batteries of size AAA.



CAUTION

1. Never disassemble or recharge the batteries.
2. Never heat up the batteries or throw them into fire.
3. Do not reverse (+), (-) poles.
4. Dispose of the batteries property.



BATTERY TYPE : AAA Size 

troubleshooting

PROBLEM	SOLUTION
Motor does not start	<ul style="list-style-type: none">• Check cable, plug and socket.• Leave to cool.
Suction force is gradually decreasing	<ul style="list-style-type: none">• Check for blockage and remove.
Cord does not rewind fully	<ul style="list-style-type: none">• Pull the cord out 2-3m and push down the cord rewind button.
Vacuum cleaner does not pick up dirt	<ul style="list-style-type: none">• Check hose and replace if required.
Low or decreasing suction	<ul style="list-style-type: none">• Please check filter and, if required, clean as illustrated in the instructions. If filters are out of condition change them to new ones.
Body overheating	<ul style="list-style-type: none">• Please check filters, If required clean as illustrated in the instruction.
Static electricity discharge	<ul style="list-style-type: none">• Please decrease power suction.

If you have any questions or comments relating to Samsung products, please contact the SAMSUNG customer care center.

COUNTRY	CUSTOMER CARE CENTER ☎	WEB SITE
AUSTRALIA	1300 362 603	www.samsung.com/au
HONG KONG	3698-4698	www.samsung.com/hk
MALAYSIA	1800-88-9999	www.samsung.com/my
SINGAPORE	1800-SAMSUNG (7267864)	www.samsung.com/sg